



## Land Improvement Contractors Of America · Illinois Chapter

*July-August 2016*

**David Haag**  
Past President

**Tom Beyers**  
President

**Lee Bunting**  
Vice President

**Grant Curtis**  
First Vice President

**Ryan Arch**  
Executive Secretary

**Bill Dean**  
Treasurer

*Area Directors*

Area 1

**Brian Brooks**

Area 2

**Steve Anderson**  
**Stuart Anderson**

Area 3

**Joe Streitmatter**  
**Mike Yordy**

Area 4

**David Kennedy**  
**John McCoy**

Area 6

**Jon Seevers**

Area 8

**Norm Kocher**  
**Brad Baker**

Associate Director

**Ryan Arch**  
Executive Director

## SUMMER DRAINAGE WORKSHOP AUGUST 2-4<sup>TH</sup>

(page 16-17)



## NATIONAL LICA CONVENTION KANSAS CITY, MO JULY 19-23<sup>RD</sup>

(page 20-21)

Also Featured Inside:

- ▶ Des Moines Water Works Case Delayed (page 6)
- ▶ IL's NLRS Drives Working Groups, ILICA Involvement (page 9)
- ▶ Extension Connection: A Procedure for Thinning & Extracting Elevation Data from LiDAR Maps (page 12-13)

Illinois LICA  
P.O. Box 474  
Brimfield, IL 61517

Upcoming Events:

Drainage Workshop  
**Richland Comm. College: Decatur**  
**August 2-4, 2016**

Board of Directors Meeting  
**ILICA Office: Brimfield**  
**September 10, 2016 - 2 PM**

### Brush Shredder

Skid Steer Loaders  
2 sizes available



Tractor Mounts  
2 sizes available • 100-160 hp



Self Propelled  
250 or 350 hp options



**Snow Blowers**  
Model ST7 for skid loaders  
Mountings available for Brown Bear tractor carriers



### Auger Backfillers



Model R31 for High flow skid and compact track loaders with 3000-5500 psi and 30-50 GPM

Model PTOAB36-10 for tractors with hydrostatic or creeper type transmission and 100-160 hp

Self-Propelled tractor carriers with 130-350 hp available and 10'-14' wide backfiller head options



## Brown Bear Corporation

Corning, Iowa 50841 • 641-322-4220

[www.brownbearcorp.com](http://www.brownbearcorp.com) • [sales@brownbearcorp.com](mailto:sales@brownbearcorp.com)

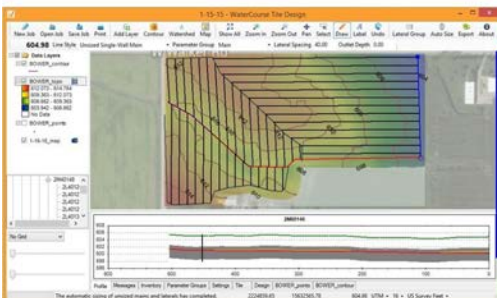


- Instant visual aids: Contour, Color, Aerial Map
- Quickly draw mains & laterals
- See a real time buried profile
- Click & drag to adjust
- Autosize tile
- Get a tile cost report
- Export to grade control

## SWMS SOIL & WATER MANAGEMENT SYSTEMS

Your Source For:

- Continued AGPS Support
- AMW Machine Control Products
- NovAtel GPS
- GPS controlled drain tile
- installation and land shaping
- Tile and connection location guidance
- & More!



Now partnered with JCG Midwest to offer local sales, parts and service!

Contact Mike or Nate: Phone: 989-587-3528 or 989-640-2347  
Email: [mike@cookswms.com](mailto:mike@cookswms.com) or [nate@cookswms.com](mailto:nate@cookswms.com)

## JCG MIDWEST

### DRAINAGE PRODUCTS

THE ONE-STOP-SHOP FOR ALL YOUR DRAINAGE NEEDS!

#### JCG MIDWEST TILE CARTS

3-PT - SINGLE - TANDEM  
HEAVIEST BUILT TILE CART ON THE MARKET  
HYDRAULIC CALIPER & DISC BRAKE  
ABILITY TO CUSTOMIZE



#### HYDRAMAXX TRENCHER PARTS

CHAIN CUTTERS, LINKS, SPROCKETS, WEAR PLATES,  
WHEEL BUCKETS, TEETH, DRIVE SPROCKETS,  
PLOW TIPS, WEAR SHANK, PINS,  
AND MUCH MORE!



#### MAVERICK TILE FINDER

650 FT OF COMPOSITE ROD  
EASY REWIND REEL  
WEATHER RESISTANT CASE  
ABILITY TO LOCATE UTILITIES



#### GPS SALES & SERVICE

REPLACEMENT PARTS INVENTORY  
NEW SOFTWARE & HARDWARE  
FULL-TIME TECHNICIAN ON STAFF



"WHAT YOU NEED, WHEN YOU NEED IT, EVERY ORDER, EVERY TIME!"

Moweaqua, IL | 217-768-3040 | [www.jcgmidwest.com](http://www.jcgmidwest.com)



# The ILICA News



**Editor/ Advertising Manager**  
Ryan Arch

**Past President**  
David Haag, Kempton

**President**  
Tom Beyers, Odin

**Vice President**  
Lee Bunting, Dwight

**1st Vice President**  
Grant Curtis, Sciota

**Executive Secretary**  
Ryan Arch, Galva

**Treasurer**  
Bill Dean, Mattoon

**Educational Advisor**  
Professor Richard Cooke  
University of Illinois

The ILICA News is the official publication of Illinois Land Improvement Contractors Association, Inc. at 118 E. Knoxville St., Brimfield, IL 61517. (309) 446-3700.

Subscription price is \$50.00 per year, issued bi-monthly: Jan.-Feb.; Mar.-Apr.; May-June; July-Aug. Sept.-Oct.; Nov.-Dec., and also includes one annual directory.

## FEATURES

- Des Moines Water Works Case Delayed ..... 6
- IL's NLRS Drives Working Groups, ILICA Involvement ..... 9
- Area 6 Outing, Summer Picnic & Member Meeting Are A Big Hit! .... 14-15
- 2016 ILICA Drainage Workshop Registration ..... 16-17
- 2016 National LICA Summer Meeting Details & Registration ..... 20-21

## COLUMNS

- Presidents Message ..... 4
- New Members ..... 5
- 2016 Board Member Schedule & Attendance ..... 5
- ILICA Ladies Page: Wine Tips & Tricks..... 8-9
- The Extension Connection ..... 12-13
- Advertisers Index ..... 19
- Board Meeting Notice ..... 19
- Calendar of Events ..... 19
- Contractor Classifieds ..... 22
- Safety Feature: Working in the Summer Heat..... 22

# Northland Trenching Equipment, LLC

*"We are the largest volume supplier for this type of equipment in the US"*



**Inter-Drain  
Plows & Trenchers**

**Trimble** TRIMBLE GPS SYSTEMS



The Inter-Drain plow, three types, double link, single cantilever, or single link, each in three sizes. Cat, Cummins or Volvo power. Offset available.



The Inter-Drain chain trencher. Four size choices, mechanical or hydraulic chain drive, vertical and offset available. Cummins, Volvo or Cat power.

**FULL SERVICE AND REBUILDS**

**HUGE PARTS INVENTORY**

**Corporate Office**  
12929 410th Avenue  
Waseca, MN 56093  
Phone: (507) 835-4214  
Fax: (507) 835-2032

**Eastern Division - Indiana**  
3578 North State Road 59  
Brazil, IN 47834  
Phone: (812) 835-2900  
Fax: (812) 835-2535

Email: [nte@hickorytech.net](mailto:nte@hickorytech.net)  
[www.northlandtrenching.com](http://www.northlandtrenching.com)





## PRESIDENT'S MESSAGE

Hello from southern Illinois, many of us are dodging showers and storms. Since our last newsletter we continue to meet with Illinois Corn Growers and Wetlands Initiative representatives about possible construction and demonstration projects. The latest on the Wetland project is that the soil profile in the location of the wet-

land is already wet subsurface. This will require a little different approach to construction than the last project. The ILICA show committee chair and his team are ready for the challenge and if this project can be completed we will get it done. Investigations and proposals for the Corn Growers have been prepared on three possible farms and have been presented for their consideration. At the May Regular meeting the board agreed to continue discussions with Illinois Farm Bureau's Lauren Lurkins about possible demonstration projects during 2017. Ryan and I have attended several NLRs benchmarking committee meetings. Everyone is seeking data about BMPs to reduce the Nutrient losses. The new ILICA Directory is now out, take a look and now would be a good time for me to Thank all of the Associates for supporting ILICA. Thank You to all the advertisers.

Bill Dean is planning a great Golf Outing June 24th and the Summer Picnic June 25th. Come join in some fun and the summer annual meeting at which we plan to vote on some by-laws changes. All of this information is available on the ILICA webpage.

National Summer Annual meeting agenda and venue have been announced. Kansas City area tours of interest, a full day of education sessions and the Board meeting.

The education committee and Ryan have been working on the August Drainage workshop. They have a proposed, three day agenda including tile drainage design & updates, edge of field BMPs, certification review & testing, and updates and developments in the technology available for use in construction. The Drainage workshop is scheduled for the first week of August.

Tom Beyers, President

### The LICA Creed



Land, the foundation of the Nation  
 The basis of all wealth  
 The heritage of the wise  
 The thrifty and prudent  
 The poor man's joy and comfort  
 The producer of food, fiber and fuel  
 The basis of factories  
 The foundation of banks

All that man builds is from the land. We often take it for granted or even abuse it; And yet many, unthinkingly and unknowingly pass the land by. What man does with the land will be the deciding factor of his survival.

**JIM HAWK TRUCK TRAILERS INC**  
**TRAILERS... PARTS... SERVICE... RENTALS...**  
 Largest Trailer Inventory in North America  
 12 Branch Locations Nationwide

Great Dane, XL SPECIALIZED TRAILERS, LOAD KING, SIDUMPER, EAST, Etnyre, DIERZEN TRAILERS, Pit Boss, CONSTRUCTION TRAILER SPECIALISTS, TRAIL KING Industries, FELLING TRAILERS, Travis, STOUGHTON, DOONAN SPECIALIZED TRAILERS, AUTOCAR

Visit Your Nearest Jim Hawk Truck Trailers in East Peoria, IL

**WWW.JHTT.COM 800.421.6559**

Proudly Celebrating **40** Years 1976-2016

For 40 years, Agri Drain has been your source for quality and reliable products for drainage water management, sub-irrigation, wetlands, ponds, lakes, erosion control, and land improvement.

**Agri Drain CORPORATION** 800-232-4742 | www.agridrain.com  
 Order online 24/7!



## NEW MEMBERS

# Welcome!

### Active Contractors

Steve Bumeter  
 Peoria Lawn Maintenance Team, LLC  
 522 Shady Oaks  
 Metamora, IL 61548  
 Ph: 309-712-2218  
 Email: steveb@mtco.com

Dave & Melinda Pellegrini  
 D & M Landscaping  
 100 W 7th Street  
 Spring Valley, IL 61362-1431  
 Ph: 815-664-2571

### Associate Members

Dakota Street Insurance, LLC  
 Shelly Samolinski  
 120 E. Dakota St., PO Box 202  
 Spring Valley, IL 61362  
 Ph: 815-663-9905  
 Email: info@dakotains.com

Dimond Bros. Insurance, LLC  
 Mark Trainor  
 118 N. Third St., PO Box 47  
 Fairbury, IL 61739  
 Ph: 815-692-2343  
 Email: mark.trainor@dimondbros.com

# Thank You!

## 2016 Board & Member Meeting Schedule

Unless changed by the Board during the year, the ILICA business meetings are scheduled as follows:

**September 10, 2016** - Regular Meeting of the Board: TBD

**November 5, 2016** - Regular Meeting of the Board: TBD

**January 13, 2017** - Winter Convention and Member Mtg.:  
 Meeting, Embassy Suites, East Peoria

Exact location, committee meeting time & other details will be published in the ILICA News and sent to members via mail and/or email.

## Schlatter's Inc.

### Intelligent Water Management™



- Wolfe Drainage Plows
- Trimble GPS Machine Control
- RTK Topo Mapping
- Water Management Design Software
- DLog Tile Mapping



[www.SchlattersInc.com](http://www.SchlattersInc.com)  
 (219) 567-9158 Francesville, IN

### 2016 Board Member Meeting Attendance

	A = absent		P = present			C = cancelled meeting	
Area / Director	Jan	Mar	May	Jun	Sep	Nov	
<b>Pres:</b> Tom Beyers	P	P	P	P			
<b>VP:</b> Lee Bunting	P	A	P	P			
<b>1st VP:</b> Grant Curtis	P	P	P	P			
Area 1 - Brian Brooks	P	P	P	P			
Area 2 - Steve Anderson	P	P	P	P			
Area 2 - Stuart Anderson	P	P	P	P			
Area 3 - Mike Yordy	P	A	A	A			
Area 3 - Joe Streitmatter	P	P	P	P			
Area 4 - David Kennedy	P	P	A	P			
Area 4 - John McCoy	P	A	P	P			
Area 5 - <b>Vacant</b>							
Area 6 - Jon Seevers	P	P	P	P			
Area 7 - <b>Vacant</b>							
Area 8 - Norm Kocher	P	A	P	P			
Associate Dir: Brad Baker	P	P	A	A			

# DES MOINES WATER WORKS CASE DELAYED

Many have been keeping a close eye on a lawsuit in Iowa that was filed in March of 2015 involving 10 drainage districts that are being sued by the Des Moines Water Works (DMWW) for nutrient runoff. This suit could have far reaching effects to farmers throughout the United States. Des Moines Water Works is pointing the finger at drainage tile and drainage ditches and accuses them of being "point sources which transport a high concentration of nitrates contained in groundwater." The trial was originally slated to begin on August 8, 2016 but was rescheduled last month by the U.S. District Court for the Northern District of Iowa in Sioux City. The court has now given both parties until June 21, 2017 to reach a settlement or the case will go to trial on June 26, 2017. Bill Stowe, DMWW CEO and General Manager since August of 2012, has been asked repeatedly what it would take for DMWW to drop their lawsuit against the districts. In response, Stowe stated "We believe permitting the drainage districts is the clearest line to reducing pollutants in the Des Moines and Raccoon rivers." However, Stowe has also admitted during deposition that because discharges from farm tiles are exempt from federal law, the drainage districts do not have the ability to require a permit

from farmers and others who discharge into the district. John Torbert, Executive Director of the Iowa Drainage District Association equated the lawsuit to "suing the



highway because cars travel the highway and cause pollution." This is a great analogy because the drainage districts not the ones putting the water in the ditches, they are simply a way for the water to move from the area.

The Iowa Drainage Districts sought a motion for summary judgement and in that motion stated "DMWW asks this court to ignore drainage districts' lack of ability to do anything DMWW requests, ignore congressional intent, overturn more than 40 years of consistent interpretation by the agencies responsible for administering the relevant statutes that Congress never overturned, and impose permitting requirements for drainage districts." The districts also pointed out that "Congress chose to place the burden to clean river water on drinking water utilities wishing to use river water, not those who convey nitrate to rivers." Iowa does have a Nutrient Reduction Strategy that has been in place for longer than the Illinois Nutrient Loss Reduction Strategy.

In addition to the far reaching effects that this lawsuit can potentially have, it also places a significant financial burden on the Iowa districts in the form of legal fees. Reportedly, the counties have raised \$100,000 to pay local attorneys and there are three other entities that are raising funds. One is a fund established by the Iowa Drainage District Association that had raised \$153,250 with approximately \$63,250 coming from the private sector. There are also funds established in Sac County and Des Moines for local donations. Joel Brinkmeyer, the CEO of the Agribusiness Association of Iowa stated "It's a very expensive lawsuit for agriculture, not just the dollars, but the time and resources that agriculture is spending to defend their position." The lawsuit is costly for DMWW as well. They reportedly spent \$550,000 and the case has not even gone to trial. The IADD will keep a close watch on this lawsuit since it will likely have far reaching effects.

## Precision Intakes Full Line of Surface Water Intakes

- 8" & 10" riser with patented 8" & 10" combination Tees.  
Also 6" square & round risers with patented reducing Tee.
- Constructed of heavy-weight, high-density polyethylene.
- Parts highly adjustable & interchangeable with others on the market.
- Orifice plate placed at tee level or at ground level.
- Exclusive locking device on each part.
- User Friendly-Priced effectively.
- Adaptor available to repair old metal or broken intakes.



Why inventory 2, when 1 serves both!



"Dealer Inquires Welcome"

**PRECISION INTAKES**

Norm & Coretha Rozendaal (800) 932-7611  
2064 Republic Ave West, Monroe IA 50170 (641) 259-2651  
www.precisionintakes.com Fax (641) 259-3218

Source: IADD (reprinted with permission)



# PROUDLY MADE IN THE USA



**BUCKEYE WHEEL TRENCHERS—AG /INDUSTRIAL**

**PRO STRINGER TILE TRAILERS**

**AG CAM CAMERA SYSTEMS**

**BUCKEYE/LINK SELF-CONTAINED PLOWS**

**LASER GRADE CONTROL SYSTEMS**

**DUAL WALL DRAG BOXES/RADIUS CUTTERS**

**LINK PLOW ATTACHMENTS & UTILITY PLOWS**

**GPS MACHINE CONTROL**

**BUCKEYE AUGER BACKFILLERS**

## MID AMERICA TRENCHERS LLC



Phone: 515-789-2005

375 State St—Dexter, IA 50070

Fax: 515-789-2040

SALES@BUCKEYETRENCHERS.COM

# WWW.BUCKEYETRENCHERS.COM

# ILICA Ladies Page

## 1. Learning About Fruit Flavors in Wine

To discover the fruit flavors in your wine, you've got to **know what the fruit tastes like. And unless you live in a place I've never heard of, you're just not going to have all the fresh fruits available that are often nuanced in wine. Solution? Jam. Seriously: Go to your supermarket and get some jams. Black-currant, plum, black cherry, strawberry and apricot are probably good ones to start with. I even found most of these at my local dollar store, so they only cost me a buck! And it really helps as you learn to taste the different flavors in wine. It'll be handy at breakfast, too.**

## 2. Economical Sipping

**I totally get it. You like wine, but even those \$8.00 bottles seem a bit much on the wallet sometimes. Well, this might be an obvious suggestion, but I've been amazed at the number of people who've never considered this before:**

Have you checked out the prices on the big ol' 1.5 liter bottles at your wine store? (They're called a "Magnum") Often, you can find great deals on these, **which are twice the amount of a regular bottle of wine and often go for \$10.00-\$12.00 or so. Some of my favorite red wines can be found at a better price in the Magnum bottles since more and more companies are producing this option. If you store it well, it can keep for several days and keep you and your guests sippin' in style!**

**Also, try the wine sales rack at the store—you can sometimes score some good deals and it will give you an opportunity to try a wine that you might not otherwise be able to afford. Or shop online if your state allows shipping.**

**Finally, if you are having a party and want some tasty wine but can't afford the cost, check out the box wine section of your store. Yep, you heard me. Just like the Magnum bottles, more and more companies are producing some tasty stuff in boxes. Now, don't just buy any box wine—some of them really are not so great. But lots of newer versions are coming out with some pretty good vino and you might be able to score something you enjoy in a 750 ml bottle for a fraction of the price. In fact, I received a recommendation for "Black Box" box wine from a very nice antiwinesnob reader just recently. I have not tried it yet, but I'll be sure to post a review when I do. If you try it, let me know what you think, okay? Just send it to [jesse@antiwinesnob.com](mailto:jesse@antiwinesnob.com)**

**If you do decide to buy boxed wine and are concerned about presentation, just empty the wine into some glass decanters or carafes for self-service. I bet your guests won't know the difference.**

CAVEAT: IN AN EFFORT TO BE AS NON-SNOBBY AND OPEN MINDED AS POSSIBLE ABOUT BARGAIN WINE, I'VE ACTUALLY TRIED SOME OF THE WINE FROM THOSE BIG JUGS WITH SCREW CAPS THAT ARE OFTEN LOCATED AT THE BOTTOM RACK OF YOUR LIQUOR STORE. THERE MAY BE AN EXCEPTION THAT I'M NOT AWARE OF, BUT, GENERALLY SPEAKING, UNLESS YOU WANT AN UNPLEASANT EXPERIENCE FOLLOWED BY A SOUR STOMACH, STAY AWAY FROM THESE!

## 3. Red or White Wine With Dinner?

So, you're having a dinner party and you don't know **what kind of wine to serve with your main course.**

**Well the truth is, nowadays, you can serve whatever type of wine you like with whatever your course may be. The old adage of Red Wine with Red Meats, White Wine with White Meats is a bit passé in today's society. Still, clichés exist for a reason, and the reason (in very basic terms), is this:**

**Red Wine: Because of the richer tannins and rolling flavors found in red wine, the flavor and feel of le vin rouge tends to be more overpowering. When eaten with other rich flavors such as a creamy cheddar cheese or a juicy steak, the**

**tannins in the wine actually bind to the proteins in your food, thereby leaving your tongue less susceptible to the astringent, drying**

**sensation that red wine often provides. Additionally, the rich flavors complement nicely with the strong, rich tastes found in your steak or cheese and the two work in harmony together.**

**White Wine: White wine tends to be crisper, lighter, higher in acidity but much lower in tannins (if any). Because of this, white wine tends to go nicely with milder dishes such as poached seafood or**

**raw oysters. The crisp, light flavors do not overpower the subtle flavors of the food and provide a pleasant, refreshing accompaniment with them.**

**So which to choose? Really, any you like. While the above paragraphs demonstrate the reason behind the adage, there is no reason why you can't try a rich, red wine with raw oysters or a crisp Chardonnay with you veal pamesan. In fact, I enjoy matching apparent opposites such as this. The flavors and contrasts are fun to experiment with.**

Plus, if you're like me, sometimes you just prefer a red over a white (or vice versa), no matter what you're eating.

**Bottom line? Red or White is really up to you and it is an acceptable practice in our modern age to drink whichever with whatever foods. In my experience, the folks that speak condescendingly about "You're supposed to drink red wine with that..." usually don't know much about wine in the first place and are just spouting out what they've heard from everyone else.**

**So enjoy. And hey, at the bargain wine prices found in my reviews, you can try one of each!**

## 4. Removing Wine Stains

Employ these tactics at your own risk.

So, you've had a few friends over and you're all sitting around the coffee table, having a good time. **Someone gets up for another hit of your fabulous fondue and accidentally kicks the bottle of red wine that you put on the floor. Before you know it, it looks as though a homicide has been committed on your white rug and you're dashing with ninja-like reflexes for the nearest towel.**

## Wine Tips & Tricks





## ILICA Ladies Page cont.

### What to do?

#### Windex.

I'm serious. This stuff is amazing. After dabbing up the wine as quickly as possible, spray Windex all over the stain and dab again with a clean towel (don't use anything where the colors in the towel might rub off). Do all of this as quickly as possible and repeat. Chances are, you can minimize the stain or even make it disappear.

Vola! Red stain is banished. Plus, you might have impressed your friends a little.

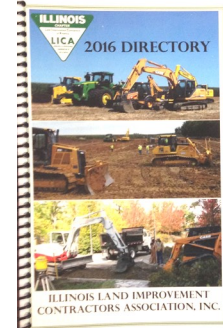
Two other home remedies I've heard of are Oxiclean or salt and water. I've not tried either of these, but I have used Oxiclean for other stains and have been pleased with its performance. If you experiment with the salt-and-water remedy, make sure you use room temperature water as hot water can set the proteins in the stain and make it very difficult to remove. Let me know how it turns out, too. (jesse@antiwinesnob.com)

5. More Clever Clues to Come  
Keep checking with antiwinesnob!

Source: <http://antiwinesnob.com/wine-reviews/>

**Didn't receive a Directory?  
Listing incorrect?  
We want to hear about it!**

The 2016 ILICA Directory just went out last month. Now is a great time to sit down with the publication to review your listing for accuracy and check out our Associate listings. If you find an error in your listing or did not receive your Directory yet, be sure to give us a call in the office so we can update our records or get you another copy mailed out.



## ILLINOIS'S NUTRIENT LOSS REDUCTION STRATEGY (NLRS) DRIVES WORKING GROUPS, ILICA INVOLVEMENT

Finalized in July 2015, Illinois's Nutrient Loss Reduction Strategy is now in the process of implementation. With interim nutrient reduction goals of 15% nitrogen and 25% phosphorus by 2025, the NLRS sets the bar for an eventual goal of 45% reduction of N and P loading for the state over time. Such an undertaking will require unique collaboration, cooperation, and implementation of nutrient reduction practices and management activities from all contributing areas of the state- urban, agricultural, and industrial.

Agriculture is labeled as the primary contributor of non-point source nitrate losses in the state, while industry ties agriculture for the top contributor title as it pertains to phosphorus. Thus, agriculture is receiving a lion's share of the education and implementation efforts that accompany the NLRS. With well over half a dozen various working groups, formed either within or out of the NLRS, there are numerous agencies, organizations, companies, and interest groups investing manpower, time, funds and other resources to help IL meet its goals; much of these groups' focus lies in farmer outreach, best management practice implementation, on-the-ground funding of projects, the provision of technical assistance, and the showcasing of these efforts.

ILICA realizes we play a critical role during these chang-

ing times, and we are doing our part to help IL reach our nutrient loss reduction goals in many ways. ILICA sits on many of these NLRS working groups including the AWQPF, Alphabet Soup, NRCS State Tech Committee and NRCS NLRS sub-committee to name a few. We are involved with many partners and projects that directly impact NLRS goals such as IL Corn, The Wetlands Initiative, Farm Bureau and others. And we are on the front lines working with producers on a daily basis to address a variety of resource concerns and goals; many of these focused on or designed around water quality.

While the NLRS is new to everyone and while some uncertainty exists surrounding how IL will achieve its nutrient reduction goals with no new NLRS funding nor State budget (at time of print), ILICA is poised to be a significant leader in this effort. We have the experience to guide new practice design and installation; we have the opportunity to diversify and expand our Association's expertise to other forms of management and practice implementation; and we have the responsibility of directly educating our customers on new practices and products that will collectively help us all in Illinois improve water quality and meet our goals.



**ILLINOIS**  
NUTRIENT LOSS  
REDUCTION STRATEGY

Improving our water resources with  
collaboration and innovation

# ATTENTION

## ILICA Associate Members

With all the potential building projects on ILICA's horizon, it only seems fair to keep our very generous associate members in the know.

The most immediate opportunities will be the Wetland Project in Bureau Co. the 4th week in August and even though a specific site has not been selected, the Illinois Corn Growers field lab project will most likely be in the Champaign/Urbana area. The committee is hoping to get things determined in time for late summer as well.

With multiple opportunities for equipment and/or material donations on these projects, the ILICA Leadership wants to assure our associate membership that they DO NOT expect everyone to donate at every opportunity.

If you are interested in participating in one or both of these building projects or would like more detail about the construction itself, please contact Ryan at the ILICA office at (309) 446-3700 or via email at Ryan@ilica.net.



## Quality Products...Unequaled Service

Over 50 years of manufacturing and supplying corrugated metal pipe and related highway drainage products.

Havana, IL Office (309) 543-2271

Monmouth, IL Office (309) 734-4113

Corporate Office (800) 735-7312

Email: [sales@metalculverts.com](mailto:sales@metalculverts.com)

[www.metalculverts.com](http://www.metalculverts.com)



### LEADING & EDUCATING

Prinsco has been an industry leader for over 35 years. We've also created online tools to help educate our customers and communities about the benefits of responsible water management practices! Go to our YouTube.com/PrinscoInc to watch and share our "Agricultural Water Management 101" video and find other valuable resources.



SINGLE-WALL



DUAL-WALL



FITTINGS



CONTROLLED DRAINAGE



OTHER PRODUCTS

### WATER MANAGEMENT

### SOLUTIONS SINCE 1975

11 manufacturing facilities in the U.S. & Canada

800.992.1725 prinsco.com





# **BOWER'S GREAT LAKES INTER-DRAIN, INC.**



**[WWW.GREATLAKESINTERDRAIN.COM](http://WWW.GREATLAKESINTERDRAIN.COM)**

**YOUR INTER-DRAIN DEALER FOR NEW  
AND USED EQUIPMENT & PARTS**

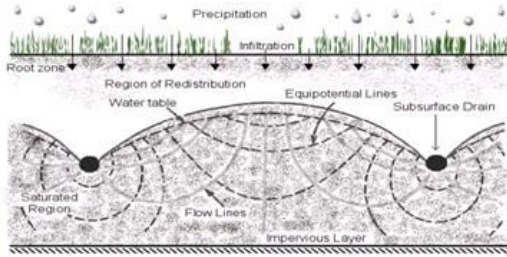
**PHONE: 419-547-2379**

**TOLL FREE: 844-473-2379**

**[SALES@BOWERSGLID.COM](mailto:SALES@BOWERSGLID.COM)**



***EXCELLENCE BY EXPERIENCE***



# The Extension Connection

Source: University of Illinois Extension

## A Procedure for Thinning and Extracting Elevation Data from LiDAR Maps

In the previous issue of the LICA newsletter a comparison of contour maps derived from LiDAR data and from field surveys was presented. Subsequently, contractors have expressed interest in obtaining elevation data from contour maps. Such a procedure is presented in his article. The procedure may also be accessed online at [http://www.wq.illinois.edu/dg/Extraction/LiDAR\\_Extraction\\_Procedure.htm](http://www.wq.illinois.edu/dg/Extraction/LiDAR_Extraction_Procedure.htm)

The online version includes videos of each step of the procedure.

The procedure is designed for QGIS (<http://qgis.org/en/site/>), a public-domain GIS that is free, easy to use, and available for Windows, Mac, and Android computers. It also has the ability to convert maps between coordinate reference systems on the fly. Thus a map created in latitude/longitude coordinates can readily be displayed in State Plane coordinates. Other GIS programs can be used, if one is more familiar with those.

**Create Boundary File.** Use the polygon tool in Google Earth to create an outline of the field, and save it as a .kml file. The Google Earth default is to save it as a .kmz file, but this type of file cannot be opened in the GIS program. Field outlines obtained from other sources can also be used.

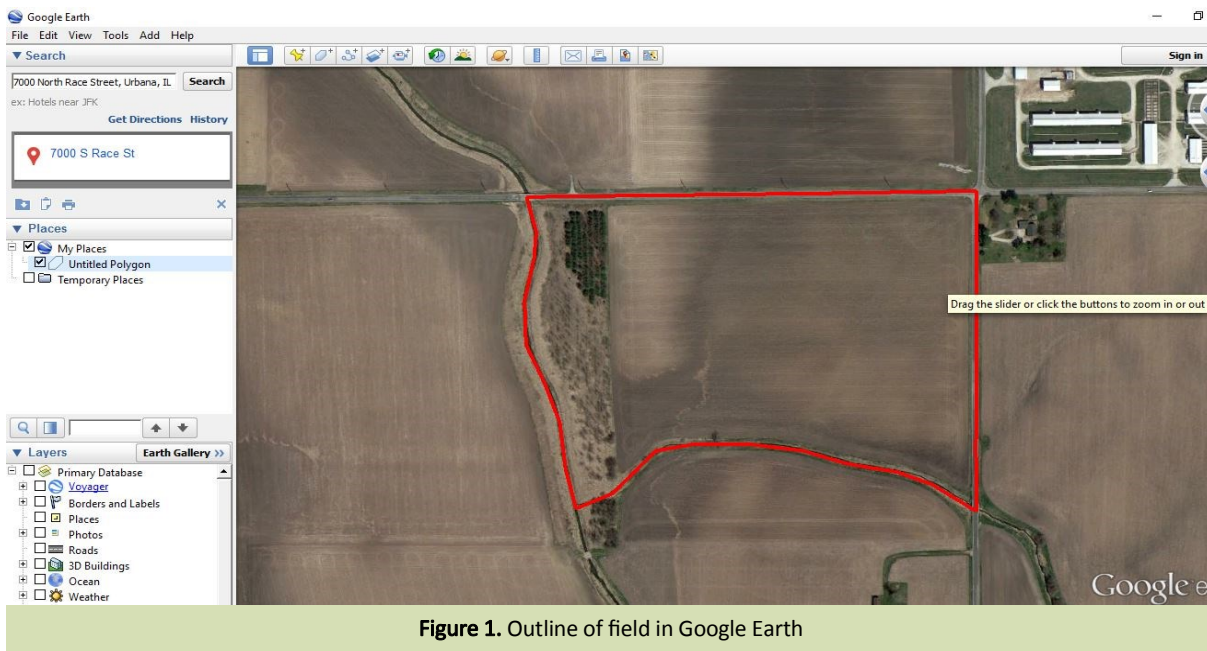


Figure 1. Outline of field in Google Earth

**Load and Convert Boundary File.** Open QGIS and load the .kml file. (*Layer ->Add Layer ->Add Vector Layer*) Save it as a shape file in Illinois State Plane East or Illinois State Plane West coordinate reference system (CRS), depending on the county in which the field is located (Figure 2). If this is the first time that a particular CRS is being specified on your computer, it will not be listed in the dropdown box. In this instance it can be selected by clicking on the globe icon to the right of the dropdown box (Figure 3) and typing the name of the CRS. Set the project CRS to that of the shape file.



# A Procedure for Thinning and Extracting Elevation Data from LiDAR Maps *(cont.)*



Figure 2. Illinois State Plane Zones

**Load County LiDAR File.** Load the county LiDAR file. (*Layer ->Add Layer ->Add Raster Layer*) It is important that the field boundary be loaded before loading the county LiDAR file. County files are quite large and if they are loaded first, the entire file is loaded, and that takes quite a bit of time. If the field boundary is loaded first, and the screen zoomed to the field level, only the portion of the county file that will show up on the screen is loaded, saving time. County LiDAR files can be downloaded from the Illinois Geospatial Data Clearinghouse.

(<https://clearinghouse.isgs.illinois.edu/data/elevation/illinois-height-modernization-ilhmp-lidar-data>) The required files are in the Digital Terrain Model (DTM) subdirectory in the Derivatives folder. Thus, only the **Derivates** folder needs to be downloaded and expanded

**Extract a Section of the County LiDAR File.** Save the county LiDAR data to a file that is limited to the extent of the screen. This step produces a LiDAR file that is much easier to manipulate than the county file. The data is at the same resolution as the county file.

**Clip LiDAR file to Field Boundary.** Clip the file produced in Step 4 to the boundary of the field. (*Raster->Extraction ->Clipper*) The resolution can be changed at this stage.

**Convert to xyz Format.** Convert the LiDAR file to xyz format. (*Raster ->Conversion ->Translate*). A rectangular region is produced, with the elevation of points outside boundary being set to an extremely high negative number. In the next step, these external points are removed.

**Clean and Label xyz File.** Unload the xyz file from QGIS. Open it in Excel, convert text to columns, sort the rows and remove external points. This step produces xyz points for the field, similar to those produced from a field survey.

**Load xyz file to QGIS.** The xyz file can be reloaded into QGIS and processed in a similar manner to regular survey. . (*Layer ->Add Layer ->Add Delimited Text Layer*)

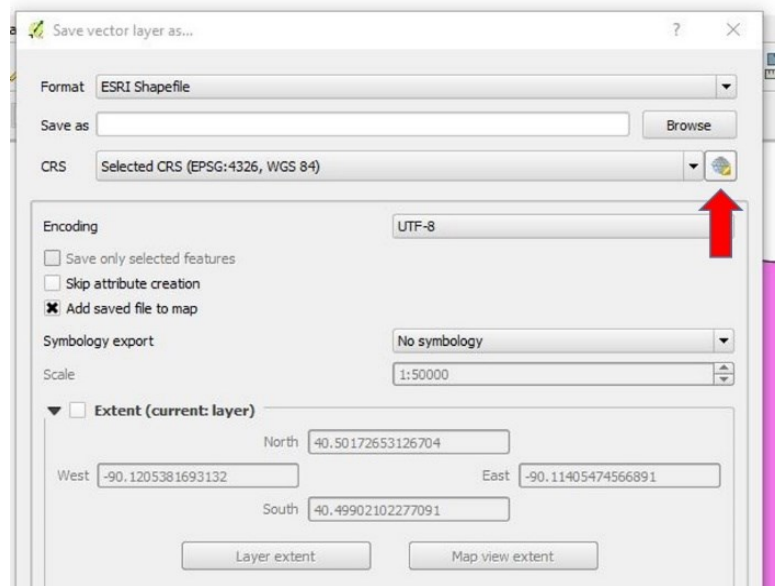


Figure 3. Icon for specifying a coordinate reference system (CRS) not already in drop down box

*I would like to thank Mark Baker from Springfield Plastics for working through the procedure and suggesting improvements. His suggestions have been incorporated into this version of the procedure.*

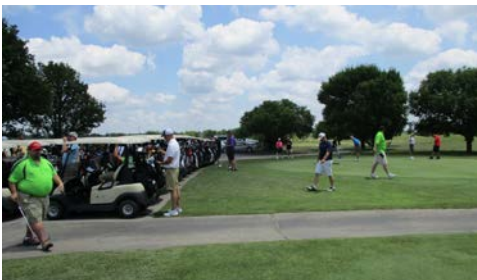
# AREA 6 GOLF OUTING, ILICA SUMMER PICNIC & MEMBER MEETING ARE A BIG HIT!

The 5th Annual Area 6 Golf Outing was a huge success with Mother Nature's cooperation this year! Sponsoring the outing this year was Jim Hawk Truck Trailers, Inc.; Altorfer, Inc.; Port Industries, Inc.; Springfield Plastics, Inc. and Birkey's along with over 30 different hole sponsors. Fifty seven golfers enjoyed Meadowview Golf Course's beautiful links and delicious lunch and dinner menu, sponsored by H & S Company, Inc. & Hickenbottom, Inc., respectively. While the weather was "steamy" at times, it was perfect compared to the last couple of years' outings in Mattoon.



lunch and dinner menu, sponsored by H & S Company, Inc. & Hickenbottom, Inc., respectively.

Our sincere thanks to everyone who supported the outing including sponsors, donors, volunteers, and golfers.



This fundraiser helps ILICA keep growing in membership and activities, and it's a great time to boot! There were only positive comments about the condition of the course, food &



beverages, and the camaraderie on-hand during the event. A few comments were a little less positive regarding the results of individual

play...but everyone still enjoyed the day!

Award winners for the day included: Longest Drive - Tyson Harris; Closest to the Pin - Steve Karolewicz; Longest Putt - Pat McCabe; Lowest Scoring Team - Grant Curtis, Mark Baker, Kyle Kucurek, Mark Shortz; Most Honest Team - Corky Hopper, Cy Hopper, Bob McCallister, Stan Uphoff.

The following Saturday morning, Birkey's had several pieces of Case equipment including skid loaders, backhoes, dozers, and a

mini excavator set up behind Bill Dean's shop for display and a hands on Backhoe Rodeo. Everyone had a blast competing against each other

by operating the various pieces of equipment through timed obstacle courses. Jon Seevers took home the Rodeo Champ title, while John McCoy was close behind in second place and Brian Brooks in third. Bower's Great Lakes Inter-Drain, Inc. sponsored a delicious breakfast before the event grilled by

Bill Dean and Mid America Trenchers, LLC sponsored a grilled lunch before the member meeting.

Our heartfelt thanks go out to the Deans for their hard work and dedication to preparing and hosting this 2 day event. Thank you again to all our Area 6 golf outing sponsors at all levels and Birkey's for their generosity in providing the



equipment and manpower for the hands-on Backhoe Rodeo on Saturday morning. ILICA events would not be as success as they



are without the hard work and generosity of all those involved. So if you have a chance to thank any of these fine folks, please let them know that YOU appreciate their efforts as well!



Thanks, too, to everyone who attended or supported these events in every way!



**JIM HAWK TRUCK TRAILERS inc**





# AREA 6 GOLF OUTING, ILICA SUMMER PICNIC & MEMBER MEETING ARE A BIG HIT! (CONT.)



## ENVISION

INSURANCE GROUP

Owned and Operated by  
**Miller Dredge Insurance**

### Four Area Locations to Serve You

7150 N. University St.  
Peoria, IL 61614  
(309) 683-1100

456 E. Main St.  
Galesburg, IL 61401  
(309) 343-1168

300 E. War Memorial Dr.  
Peoria, IL 61614  
(309) 685-6606

150 S. Main St.  
Morton, IL 61550  
(309) 263-2400

- Business & Personal Insurance
- Life & Health Benefits
- Bonding



LEE MILONE  
OWNER / MANAGER

Phone (618) 395-8046  
Fax (618) 393-4702

1-800-247-7972

4678 Weinmann Dr., Suite A  
Olney, IL 62450

"WE TAKE PRIDE IN OUR WORK AND SERVICE WHAT WE SELL"



**"Service is Our Business"**

See us for your farm, commercial and industrial needs.

We carry a full line of Shell Rotella and Pro Performance products.

Roger Bragg  
217-259-1996

**Office:**  
**217-728-7195**

Rick Bennett  
217-246-5162



UNIVERSITY OF ILLINOIS  
EXTENSION

# 2016 DRAINAGE WORKSHOP AGENDA



## AUGUST 2<sup>ND</sup>, 3<sup>RD</sup>, 4<sup>TH</sup>

NLRS & End-of-Pipe Practices Overview ▪ Drainage Design Considerations ▪ Bioreactor & DWM Design ▪ Dual Purpose Sub-Irrigation/Drainage Systems ▪ Construction Do's & Don'ts Design Tools (Google Earth, QGIS) ▪ ILICA Certification ▪ IL Drainage Guide

### Tuesday

8:30 am Registration & continental breakfast  
 9 – 10:00 am Nutrient Loss Reduction Strategy (NLRS)  
 10:00 – 11 am Bioreactors  
 11 am – Noon Saturated buffers  
 Noon Lunch onsite  
 1 – 2:30 pm Wetlands  
 2:30 pm Break  
 3:00 – 4:00 pm Construction “do’s and don’ts”

### Wednesday

8 am Full Breakfast onsite  
 8:30 am – Noon Surveying basics, calculating slopes, sizing (Break included) the main, layout laterals, control zones and drain spacing for dual purpose systems, etc.  
 Noon Lunch onsite  
 12:45 - 2 pm Initial considerations using field data as source material: soils, outlets, suitability for drainage water management

### Wednesday cont.

2 pm Break  
 2:15 – 3:15 pm Update on recent U of I research projects: field mapping w/drones  
 3:15 – 5 pm Installation of GIS & LiDAR data

### Thursday

8 am Full breakfast onsite  
 8:30 – 9:30 am Google Earth overview  
 9:30 - 10:45 am QGIS, LiDAR extraction  
 10:45 am Break  
 11:00 - Noon Sizing bioreactors, Drainage Guide update /overview  
 Noon Lunch onsite  
 1 – 5 pm ILICA certification review & testing (Break included)

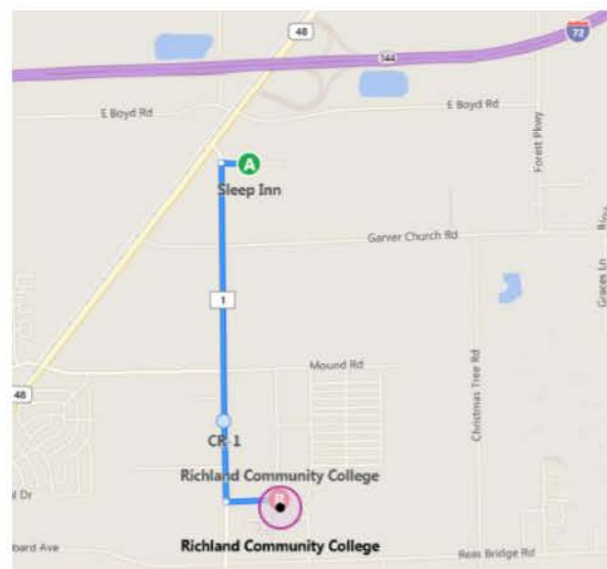
This tentative agenda outlines the content of ILICA’s Summer Drainage Workshop. The goal of the first day is to provide an update/overview of the IL Nutrient Loss Reduction Strategy (NLRS) and to highlight the end-of-pipe practices used to address its goals, including basic practice design considerations and on-going research. This first day will conclude with construction do’s and don’ts.

Day two will include a full day of drainage design: surveying, soils, outlets, tile sizing, suitability for drainage water management, dual purpose drainage design, and other site considerations. The day will conclude with some U of I research project updates and data download preparations for day three.

The first half of the third day will include an overview of different design tools such as Google Earth, QGIS, and the IL Drainage Guide, as well as bioreactor sizing.

**ILICA certification is set for Thursday at 1 pm** for those contractors interested in becoming an ILICA certified contractor, for those needing retesting, or for those looking to add more classifications to their current certification.

The registration form and contact information for the Sleep Inn is on the following page. Mention Illinois LICA to get our rate of \$82.99 + tax. **Make your overnight room reservations before July 17th.** The hotel is close and very convenient for getting to class at Richland.







# ILICA DRAINAGE WORKSHOP REGISTRATION



## August 2-4, 2016 - Richland Community College

Shilling Center - One College Park, Decatur

Aug. 2nd: NLRS & End-of-Pipe Practices Overview ▪ Construction Do's & Don'ts

Aug. 3rd: Drainage Design Considerations ▪ DWM, Dual Purpose Sub-Irrigation/Drainage Systems Design

Aug. 4th: Design Tools Overview (Google Earth, QGIS) ▪ IL Drainage Guide & Bioreactor Sizing ▪ ILICA Certification

Pre-Registration Workshop Fees - ILICA Members		
	1st Attendee	Additional
Full Registration for all Sessions:	\$150	\$125
Session Pricing		
Day 1: NLRS & Practice Overview	\$ 60	\$ 50
Day 2: Drainage Design	\$ 60	\$ 50
Day 3: Design Tools	\$ 60	\$ 50
After July 26, 2016 or On-Site Registration		
	1st Attendee	Additional
Full Registration for all Sessions:	\$200	\$180
Session Pricing		
Day 1: NLRS & Practice Overview	\$ 80	\$ 65
Day 2: Drainage Design	\$ 80	\$ 65
Day 3: Design Tools	\$ 80	\$ 65
Optional Certification Review & Testing on Aug. 4th (2 year certification period)		
	\$100—Initial Certification Per Applicant	
	\$50—Bi-Annual Renewal Per Applicant	

Pre-Registration Workshop Fees - Non-ILICA Members		
	1st Attendee	Additional
Full Registration for all Sessions:	\$225	\$200
Session Pricing		
Day 1: NLRS & Practice Overview	\$ 90	\$ 75
Day 2: Drainage Design	\$ 90	\$ 75
Day 3: Design Tools	\$ 90	\$ 75
After July 26, 2016 or On-Site Registration		
	1st Attendee	Additional
Full Registration for all Sessions:	\$300	\$260
Session Pricing		
Day 1: NLRS & Practice Overview	\$100	\$ 85
Day 2: Drainage Design	\$100	\$ 85
Day 3: Design Tools	\$100	\$ 85
Optional Certification Review & Testing on Aug. 4th (2 year certification period)		
	\$500—Initial Certification Per Applicant	
	\$200—Bi-Annual Renewal Per Applicant	

Yes, I will attend the following ILICA Summer Drainage Workshop Session(s)

- NLRS & End-of-pipe Practices Overview (day 1)
- Drainage Design & Tile Installation (day 2)
- Design Tools & Bioreactor Sizing (day 3)
- Optional ILICA Certification (day 3 at 1 pm)

Name: \_\_\_\_\_ Phone: \_\_\_\_\_

Address: \_\_\_\_\_ City, State, Zip \_\_\_\_\_

Company Name: \_\_\_\_\_ Email: \_\_\_\_\_  
*For confirmation documents*

Additional Attendees \_\_\_\_\_, \_\_\_\_\_, \_\_\_\_\_,  
\_\_\_\_\_, \_\_\_\_\_, \_\_\_\_\_

Pre-Registration fees must be received in our office by deadlines stated above.

Mail to: ILICA - P.O. Box 474 - Brimfield, IL 61517 or Fax: (309) 446-3744 Total Enclosed: \$ \_\_\_\_\_

Sleep Inn ~ Phone: 217-872-7700 3920 E. Hospitality Lane- Decatur, IL	Please contact the hotel and mention <b>Illinois LICA</b> as your group <b>no later than July 17th</b> to receive the group rate of \$82.99 + tax.
--	--

Central Park was  
once a swamp that  
everyone hated.



**FRATCO**

MODERN DRAINAGE.

[fratco.com/history](http://fratco.com/history)

Before its drainage in 1858, The United State's premier urban park was considered a menace. After installing a 20 mile tile-drainage system, the 858-acre park came to life as the most beautiful part of New York and a respite, for many, from hectic city life.



## CALENDAR OF EVENTS

### Illinois

Summer Drainage Workshop  
 August 2 - 4<sup>th</sup>, 2016  
 Richland Community College  
 Shilling Center-Salon I & II  
 One College Park, Decatur, IL 62521

Board of Directors Meeting  
 Saturday, September 10, 2016  
 ILICA Office  
 118 E. Knoxville St., Brimfield, IL 61517  
**Committee meetings - 10 am - 1 pm**  
**Board Meeting - 2 pm**

### National

LICA Summer Convention  
 InterContinental Kansas City at the Plaza  
 401 Ward Parkway, Kansas City, MO  
 July 19 - 23, 2016  
**Hotel Block available Now!**

## ADVERTISERS INDEX

<b>Advanced Drainage Systems, Inc.</b> .....	<b>19</b>
<b>Agri Drain Corp</b> .....	<b>4</b>
<b>BM Truck Equipment, Inc.</b> .....	<b>15</b>
<b>Bower's Great Lakes Inter-Drain, Inc.</b> .....	<b>11</b>
<b>BRON</b> .....	<b>23</b>
<b>Brown Bear Corp</b> .....	<b>2</b>
<b>E-K Petroleum, LLC</b> .....	<b>15</b>
<b>Envision Insurance Group, LLC</b> .....	<b>15</b>
<b>Fratco, Inc.</b> .....	<b>18</b>
<b>JCG Midwest Drainage Products</b> .....	<b>2</b>
<b>Jim Hawk Truck Trailers, Inc.</b> .....	<b>4</b>
<b>Martin Equipment of Illinois, Inc</b> .....	<b>24</b>
<b>Metal Culverts, Inc</b> .....	<b>10</b>
<b>Mid America Trenchers, LLC</b> .....	<b>7</b>
<b>Midwest Plastic Products</b> .....	<b>23</b>
<b>Mike Cooks' Soil &amp; Water Mgmt. Systems</b> . . . .	<b>2</b>
<b>Northland Trenching Equipment, LLC</b> .....	<b>3</b>
<b>Precision Intakes Ltd</b> .....	<b>6</b>
<b>Prins Insurance, Inc./ United Fire Group</b> . . . . .	<b>24</b>
<b>Prinsco, Inc</b> .....	<b>10</b>
<b>Roland Machinery Co.</b> .....	<b>24</b>
<b>Schlatter's, Inc.</b> .....	<b>5</b>
<b>Springfield Plastics, Inc.</b> .....	<b>24</b>
<b>Vermeer Midwest, Inc</b> .....	<b>22</b>



## Improving Illinois farmland for 50 years

In 1966, Advanced Drainage Systems was the first company to manufacture plastic agriculture pipe in the United States. Today ADS is proud to continue its support of the agriculture industry.

At ADS we have an unmatched production selection for the ag market:

- 3"-24" (75-600 mm) singlewall pipe & fittings
- 4"-60" (100-1500 mm) dual wall pipe & fittings
- Water Control Structure

**For more on ADS products please contact:**

<b>Michael Maierhofer, Northern Illinois</b>	<b>815-510-1512</b>
<b>David Randolph, Central Illinois</b>	<b>217-855-7286</b>
<b>Ryan Carter, Southern Illinois</b>	<b>618-614-8556</b>

[www.ads-pipe.com](http://www.ads-pipe.com)



### By-Laws Amended at Member Meeting

By unanimous vote at the summer member meeting in Mattoon on June 25, 2016, the ILICA by-laws were amended as proposed and printed in the last newsletter. The amended by-laws essentially recognize the utilization of electronic media such as email, conference calls, and skype for conducting ILICA business and meetings.

# 2016 Summer Meeting Tentative Agenda



## Celebrating LICA



### Tuesday, July 19

- 8:00 am - 5:30 pm Big Brutus Tour  
6:00 pm Executive Committee

### Wednesday, July 20

- 7:30 am - 5:00 pm Water, Water Everywhere Tour

### Thursday, July 21

- 8:00 am - 8:45 am LICA Benefits  
9:00 am - 9:45 am A Flood of Rules, Regulations, & Legislation  
10:00 am - 10:45 am Drones for Contractors  
11:00 am - 11:45 am Why OSHA Is Up In the Air Over Your Forklift  
1:00 pm - 1:45 pm Watch the "Fine Print" When Buying Insurance  
1:30 pm - 4:30 pm Culinary Scavenger Hunt & Adventure Tour  
2:00 pm - 3:30 pm Protecting Your Assets  
7:00 pm - 10:00 pm Sports Theme Associates' Night

### Friday, July 22

- 7:00 am - 7:30 am Devotions  
7:00 am - 7:30 am Committee Chairs  
7:30 am Opening Breakfast  
**Committee Meetings**  
8:45 am - 9:45 am Education/Tech  
Legislative  
Water Table Mgmt..  
Executive Directors  
10:00 am - 11:00 am By- Laws  
Conservation, Exc.  
Ladies & Devotions  
Executive Directors (cont.)  
11:15 am - 12:15 pm Convention  
Long-Term/Past Pres.  
On-Site Waste  
Safety/Insurance  
12:30 pm Lunch  
2:00 pm - 3:00 pm Membership  
Policy  
Associates  
3:15 pm - 4:15 pm Region Meetings  
4:30 pm - 5:30 pm Budget  
7:15 pm Royals Game  
(Game Starts at 7:15 pm)

### Saturday, July 23

- 7:00 am - 7:30 am Devotions  
8:00 am Breakfast  
9:15 am - 10:30 am Board Meeting  
11:30 am Lunch  
1:00 pm - 7:30 pm LICA Anniversary Celebration  
at Foley Equipment

Check out [http:// www.licanational.com/](http://www.licanational.com/) for more session and tour details



# 2016 SUMMER MEETING REGISTRATION

## Kansas City, Missouri • July 18 - 23



Company \_\_\_\_\_  
 City \_\_\_\_\_ State \_\_\_\_\_  
 Phone \_\_\_\_\_  
 Email \_\_\_\_\_

### Early Bird Registration Postmarked by July 1, 2016

**Members, Spouses, Associates** **\$250**  
 Number Attending \_\_\_\_\_ Total \$ \_\_\_\_\_  
**Youth: 13 Years & under (Under 3 Free)** **\$235**  
 Number Attending \_\_\_\_\_ Total \$ \_\_\_\_\_

#### Names of Attendees (for Badges)

Name \_\_\_\_\_  
 Name \_\_\_\_\_  
 Name \_\_\_\_\_  
 Name \_\_\_\_\_

### Registration Postmarked after July 1, 2016

**Members, Spouses, Associates** **\$275**  
 Number Attending \_\_\_\_\_ Total \$ \_\_\_\_\_  
**Youth: 13 Years & under (Under 3 Free)** **\$255**  
 Number Attending \_\_\_\_\_ Total \$ \_\_\_\_\_

*Registration Includes: Associates Night, Friday breakfast & lunch, Saturday breakfast, lunch, & LICA Anniversary Celebration at Foley Equipment.*

### Optional Tours

**Tues. July 19**  
 Big Brutus No. Attending \_\_\_\_\_  
 Cost \$65 per person Total \$ \_\_\_\_\_

**Weds. July 20**  
 Water Tour No. Attending \_\_\_\_\_  
 Cost \$50 per person Total \$ \_\_\_\_\_

**Thurs. July 21**  
 Culinary Scavenger Hunt No. Attending \_\_\_\_\_  
 Cost \$50 per person Total \$ \_\_\_\_\_

**Fri. July 22**  
 Royals Game No. Attending \_\_\_\_\_  
 Cost \$34 per person Total \$ \_\_\_\_\_

### LICA Cook Off Challenge Sign-up

**Sat. July 23 (at Foley Equip.)**  
 Cost \$ 35 per person No. Participating \_\_\_\_\_  
 Total \$ \_\_\_\_\_

**Convention total \$ \_\_\_\_\_**  
*(tours plus convention registration)*

**Hotel Information:**  
**Intercontinental Kansas City at the Plaza**  
**401 Ward Parkway | Kansas City, MO 64112**

**\$135 (plus tax) per night.**  
**Reserve By: June 27, 2016.**  
**call 866-856-9717**  
**(LICA Summer Meeting)**

Return this form with payment to:  
**LICA Summer Meeting**  
**3080 Ogden Ave. Suite 300, Lisle, IL 60532**

Enclosed is my check for \$ \_\_\_\_\_  
*or charge my credit card*  
 Credit Card MC Visa

Cardholder \_\_\_\_\_  
 Card # \_\_\_\_\_  
 Exp. \_\_\_\_\_ 3 Digit Code \_\_\_\_\_  
 Billing zipcode \_\_\_\_\_

**Registration Policy:** Only individuals registered and wearing badges may attend Summer Meeting events. No registration will be processed without payment. Registration fee deadlines will be strictly enforced.  
**Refund Policy:** For cancellations received prior to July 8, 2016 a \$30.00 charge will be deducted from the original amount paid. No registration payment will be refunded after July 8, 2016 unless there has been an emergency.



# WORKING IN THE SUMMER HEAT

Heat-related illnesses can be deadly. Thousands become sick every year and many die due to preventable heat-related illnesses. With summer temperatures rising, now is the best time to prepare for working outdoors in

excessive heat by following a few simple steps

## HEAT-RELATED ILLNESS: KNOW THE SIGNS

It's important to know the signs of heat-related illness—acting quickly can prevent more serious medical conditions and may even save lives.

Heat Stroke is the most serious heat-related illness and requires immediate medical attention. Symptoms include: confusion, fainting, seizures, very high body temperature and hot, dry skin or profuse sweating. CALL 911 if a coworker shows signs of heat stroke.

Heat Exhaustion is also a serious illness. Symptoms include: headache, nausea, dizziness, weakness, thirst and heavy sweating. Heat fatigue, and heat rash are less serious, but they are still signs of too much heat exposure.

If you or a coworker has symptoms of heat-related illness, tell your supervisor right away. If you can, move the person to a shaded area loosen his/ her clothing, give him/ her water (a little at a time), and cool him/ her down with ice packs or cool water.

## TO PREVENT HEAT ILLNESS:

WATER.REST.SHADE.

Drink water every 15 minutes, even if you are not thirsty.

Rest in the shade to cool down.

Wear a hat and light-colored clothing

Learn the signs of heat illness and what to do in an emergency.

Keep an eye on fellow workers.

Acclimate – "easy does it" on your first days of work; be sure to get used to the heat and allow yourself to build up a tolerance. Not being used to the heat is a big problem. Many of the people who died from heat stress were either new to working in the heat or returning from a break. If a worker has not worked in hot weather for a week or more, their body needs time to adjust.



This is OSHA's fourth year implementing its Heat-Illness Prevention Campaign. More resources are available on OSHA's website in English and Spanish and even an app to download to your phone to calculate the heat index and provide recommendations based on your risk level. Check out [www.osha.gov/heat](http://www.osha.gov/heat) for training and other educational resources.

If you have questions, call OSHA. It's confidential. Call 1-800-321-OSHA (6742) or visit [www.osha.gov](http://www.osha.gov) to learn more about your rights and staying healthy in the workplace.

## CONTRACTOR CLASSIFIEDS

### FOR SALE

**Speicher 7060 Tile Machine:**  
Hydrolic traction drive, new hydrolic wench, 6ft digging depth, original laser equipment  
Call: (309) 335-3043

### FOR SALE

**4' Laser Plane Digital Laser Mast:**  
Model# EM2E-12.  
**Laser Plane Spectra Physics Digital Control Box:** Model# CB2ETD.  
**Spectra Precision Laser Receiver:**  
Model# R2S-S  
**\$2700.00 Will deliver 50+ miles or buyer pays shipping**  
Call or text (815) 791-2289



1807 179th St North  
East Moline, IL 61244  
(309) 751-9540

120 East Martin Dr  
Goodfield, IL 61742  
(309) 965-3300

[VERMEERMIDWEST.COM](http://VERMEERMIDWEST.COM)



**BRON**  
POWER TO PERFORM

[www.rwfbron.com](http://www.rwfbron.com)

# 550 SELF-PROPELLED DRAINAGE PLOW

**AUTO STEER READY**

**LOW GROUND PRESSURE**

**CAT OR CUMMINS ENGINE**



- Standard Oscillating Track Frames
- Positive Drive On-board Reel
- Enhanced Operators Visibility
- FOPS/ROPS Certified
- Tri-Core Cooling System

**1.800.263.1060 519.421.0036 [www.rwfbron.com](http://www.rwfbron.com)**

BRON is a registered trade mark of RWF Industries a division of Roberts Welding & Fabricating Ltd.



## WE GO TO GREAT LENGTHS

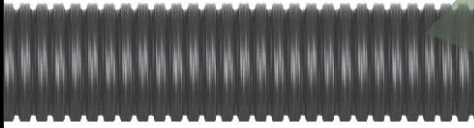
Farmers and contractors count on us for millions of feet of high quality drain tile.

- 3"- 48"
- Single & Dual Wall
- Fittings for All Sizes
- **FREE DELIVERY** within 300 miles

**920-674-3332 | [www.draintile.com](http://www.draintile.com) | Jefferson, Wisconsin | Plainfield, Iowa**



**QUALITY IN.  
QUALITY OUT.**



*We Provide*

- ▶ Consistent material every time
- ▶ Friendly, knowledgeable staff
- ▶ Relationships to last for generations
- ▶ Peace of mind



**Springfield Plastics, inc.**  
800-252-3361 • www.spipipe.com

Manufacturing 100% Virgin Resin Farm Drainage Pipe and Peace Of Mind

**MARTIN**  
E q u i p m e n t



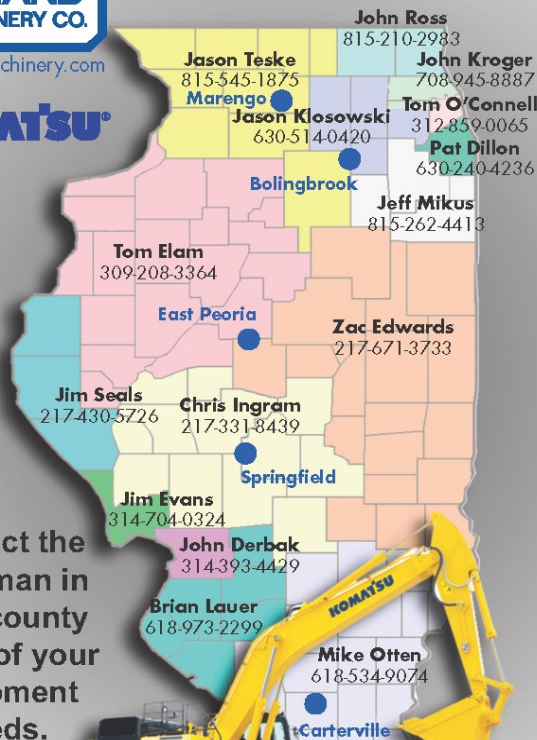
400 W Martin Dr    2384 J David Jones Pkwy    #6 Terminal Road  
Goodfield, IL    Springfield, IL 62707    Peru, IL 61354  
(309)925-2502    (217)528-4347    (815)224-4711

887 US Route 45  
Tolono, IL 61880  
(217)485-6755

3720 85<sup>th</sup> Ave W  
Rock Island, IL 61201  
(309) 787-6108

**ROLAND  
MACHINERY CO.**  
rolandmachinery.com

**KOMATSU**



Contact the  
salesman in  
your county  
for all of your  
equipment  
needs.



**Unearth  
your potential.**

Protect your tomorrow.

We want to help you unearth your potential by ensuring you have the coverages, service and pricing you need.

Find an independent UFG agent on [ufgins.com](http://ufgins.com), or contact Prins Insurance, Inc. at 800-831-8545.

