

ILICA



NEWS

Land Improvement Contractors Of America · Illinois Chapter

November - December 2017

Tom Beyers
Past President

Lee Bunting
President

Grant Curtis
Vice President

Steve Anderson
First Vice President

Ryan Arch
Executive Secretary

Bill Dean
Treasurer

Area Directors

Area 1

Brian Brooks

Area 2

Stuart Anderson

Area 3

Wes Litwiller
Joe Streitmatter

Area 4

David Kennedy
John McCoy

Area 5

Earl Mast

Area 6

Scott Day
Jon SeEVERS

Area 8

Tom Beyers
Norm Kocher

Brad Baker
Associate Director

Ryan Arch
Executive Director

Upcoming Events:

Board of Directors Meeting

Hampton Inn: Springfield
November 4, 2017 - 2 PM

ILICA Conv./Members' Meeting

Embassy Suites: East Peoria
January 11-13, 2018

HIGH PROFILE BIOREACTORS *(page 16-17)*



2018 ILICA CONVENTION JANUARY 11-13, 2018

(page 14-15)



Also Featured Inside:

- ▶ **Treasury Withdraws Proposed Regulations Aimed at Minimizing Valuation** *(page 6)*
- ▶ **2018 Convention Additions** *(page 11)*
- ▶ **Extension Connection: Online Tools for Watershed-scale Drainage Design** *(page 12-13)*

Illinois LICA
P.O. Box 474
Brimfield, IL 61517

Brush Shredder

Skid Steer Loaders
2 sizes available



Tractor Mounts
2 sizes available • 100-160 hp



Self Propelled
250 or 350 hp options



Snow Blowers
Model ST7 for skid loaders
Mountings available for Brown Bear tractor carriers



Auger Backfillers



Model R31 for High flow skid and compact track loaders with 3000-5500 psi and 30-50 GPM

Model PTOAB36-10 for tractors with hydrostatic or creeper type transmission and 100-160 hp

Self-Propelled tractor carriers with 130-350 hp available and 10'-14' wide backfiller head options



Brown Bear Corporation

Corning, Iowa 50841 • 641-322-4220

www.brownbearcorp.com • sales@brownbearcorp.com



NEW OWNERSHIP OF AGPS IN 2017

COOK'S //AGPS LLC

Your Source For:

- AGPS Products & Support
- Continued support for AMW Machine Control Products
- NovAtel GPS
- GPS controlled drain tile installation and land shaping
- Tile and connection location guidance
- & More!

//AGPS Programs Available:

- AGPS Pipe, 3 different versions
 - Topo & Guide 2D
 - Ditch
- Dirt including Terracing & Waterways
 - AMW TileDesign

Working with NovAtel technologies, we have the ability to control equipment requiring 2 GPS positions with 1 rover, saving you the cost of buying a second rover system.

WE ARE EXCITED TO INTRODUCE XMC MACHINE CONTROL
XMC Machine Control is a partnership of Mike Cook's Soil and Water Management Systems, Inc. and other machine control dealers that brings you over 100 years of machine control expertise. Our experience coupled with ownership of the AGPS brand will set new standards in machine control. We will provide box products and custom solutions to fit your needs and bring you a complete system. Our expertise allows us to custom build solutions for niche markets, listen to our customers, and create specific targeted solutions. No more general use systems which are not specifically built to fit your job.

Contact Mike or Nate: Phone: 989-587-3528 or 989-640-2347
Email: mike@cookswms.com or nate@cookswms.com

JCG MIDWEST

DRAINAGE PRODUCTS

Exciting things are continuing to happen at JCG Midwest!

We have acquired Arnett Pipe & Supply and now carry a large inventory of aluminum & aluminized corrugated metal pipe.



We have an on-staff fabricator to customize:

- *pond structures
- *drop-notch structures
- *anti-seep plates
- *trash racks & much more!

"We also have an in-house professional engineer for all of your custom design needs!"

AGPS SALES & SERVICE
PROFESSIONAL ON STAFF

PRODUCTS & SERVICES:

- *PLASTIC DRAINAGE MATERIALS
- *GPS SALES & SERVICE
- *METAL PIPE & PRODUCTS
- *DRAINAGE DESIGN SERVICES
- *TOPOGRAPHIC MAPS & DATA
- *CROP HEALTH IMAGING
- *BECK'S SEED SALES

THE ONE-STOP-SHOP FOR ALL YOUR DRAINAGE NEEDS!

Moweaqua, IL | 217-768-3040 | www.jcgmidwest.com

The ILICA News



Editor / Advertising Manager
Ryan Arch

Past President
Tom Beyers, Odin

President
Lee Bunting, Dwight

Vice President
Grant Curtis, Sciota

1st Vice President
Steve Anderson, Marseilles

Executive Secretary
Ryan Arch, Galva

Treasurer
Bill Dean, Mattoon

Educational Advisor
Professor Richard Cooke
University of Illinois

The *ILICA News* is the official publication of Illinois Land Improvement Contractors Association, Inc. at 118 E. Knoxville St., Brimfield, IL 61517. (309) 446-3700.

Subscription price is \$50.00 per year, issued bi-monthly: Jan.-Feb.; Mar.-Apr.; May-June; July-Aug.; Sept.-Oct.; Nov.-Dec., and also includes one annual directory.

FEATURES

Treasury Withdraws Proposed Regulations Aimed at Minimizing Valuation. . . 6

2018 Convention Additions. 11

2018 ILICA Convention: January 11-13, 2018 14-15

High Profile Bioreactors. 16-17

Tech Talk: How to Tighten Track Life. 22

COLUMNS

President's Message 4

New Members 5

2017 Board Member Schedule & Attendance 5

ILICA Ladies Page: 13 Christmas Party Themes You've Never Thought . . 8-9

Extension Connection 12-13

Featured Benefit: Mack Trucks's Ground Breaker. 18

Advertisers Index 19

Board Meeting Notice 19

Calendar of Events 19

Safety Feature: Mounting & Dismounting Equipment 21

Northland Trenching Equipment, LLC

"We are the largest volume supplier for this type of equipment in the US"



Inter-Drain
Plows & Trenchers

 TRIMBLE GPS SYSTEMS



The Inter-Drain plow, three types, double link, single cantilever, or single link, each in three sizes. Cat, Cummins or Volvo power. Offset available.



The Inter-Drain chain trencher. Four size choices, mechanical or hydraulic chain drive, vertical and offset available. Cummins, Volvo or Cat power.

 FULL SERVICE AND REBUILDS

 HUGE PARTS INVENTORY

Corporate Office
12929 410th Avenue
Waseca, MN 56093
Phone: (507) 835-4214
Fax: (507) 835-2032

Eastern Division - Indiana
3578 North State Road 59
Brazil, IN 47834
Phone: (812) 835-2900
Fax: (812) 835-2535

Email: nte@hickorytech.net
www.northlandtrenching.com



PRESIDENT'S MESSAGE



Since my last report, ILICA has built two bioreactors: one at the Farm Progress Show (FPS) & the other in partnership with Illinois Farm Bureau in Henry County. First of all, I want to thank Ruth Book and all the NRCS staff for the bioreactor plan development, for staffing both sites, and for allowing us to move things around after we start digging and uncover hidden obstacles. We had three days of beautiful weather and lots of interest in the tiling demonstration and end-of-pipe bioreactor during the Farm Progress Show. We were northwest of Geneseo in Henry Co. for the partnership project with Ill. Farm Bureau and had a great public and media turnout showcasing ILICA in action, building another end-of-pipe, nutrient reduction practice. I want to thank the Show Committee and Co-Chairs, Bill Doubet and Jon SeEVERS, for the successful completion of these two projects. To the Associate Members, your continued support of materials and equipment to these shows are greatly appreciated. To the great ILICA members bringing your crews to 3 days at the FPS and 2 days in Henry Co., THANK YOU!!!

THINK SAFETY, ACT SAFELY is the theme of our Illinois LICA Convention and Members' Meeting on January 11 – 13, 2018 at the Embassy Suites Hotel and Convention Center in East Peoria. Registration forms will be out soon. Marie is working on some outing details for the ladies; so register, pack your bags, and bring your significant other to East Peoria.

Be SAFE,
Lee Bunting

The LICA Creed



Land, the foundation of the Nation; the basis of all wealth; the heritage of the wise; the thrifty and prudent; the poor man's joy and comfort; the producer of food, fiber and fuel; the basis of factories; the foundation of banks; all that man builds is from the land. We often take it for granted or even abuse it; And yet many, unthinkingly and unknowingly pass the land by. What man does with the land will be the deciding factor of his survival.



Inter-Drain

"Excellence by Experience"



Bower's Great Lakes Inter-Drain, Inc.

Your Dealer for Inter-Drain Plows, Trenchers and Parts

1912 W McPherson Hwy, Clyde, OH 43410

419-547-2379

sales@bowersglid.com

www.greatlakesinterdrain.com

NEW MEMBERS

Active Contractors

Jim Sullivan

PO Box 352
Hamilton, IL 62341
Ph: 217-847-2102
Email: jasullivan@frontiernet.net

William Mager

4262 S. State Rd. 59
Rockville, IN 47872
Ph: 765-230-6149

Merl Mennenga

Mennenga Construction, Inc.

310 Abbey Rd.
Urbana, IL 61802
Ph: 217-337-6301
Email: merlmennenga@comcast.net

Nokomis Excavating & Trucking, Inc.

667 E. Bertolino Ave.
Nokomis, IL 62075
Ph: 217-563-7267
Email: nokomisexcavating@msn.com

Joe Lemkemann

Bayshore, Inc.

1419 W. Riverview Dr.
E. Peoria, IL 61611
Ph: 309-208-5328
Email: joelemkemann@gmail.com
Website: bayshoresepticervices.com

Associate Members

Mast & Shupe, Inc.

Earl Mast

1200 N. 425th Ave.
Payson, IL 62360
Ph: 217-242-8709

Thornton Precision AG

Bryce Thornton

9 Stacey Lane
Mattoon, IL 61938
Ph: 217-259-1575
Email: thornton.guidance@gmail.com

Xylem, Ltd.

Chuck Dornfeld

18715 Route 84 N
Cordova, IL 61242
Ph: 309-654-2261
Email: Chuck@XylemLtd.com
Website: www.XylemLtd.com

BOARD & MEMBER MEETING SCHEDULE

Unless changed by the Board during the year, the ILICA business meetings are scheduled as follows:

Nov. 4, 2017 - Regular Meeting of the Board:
Hampton Inn, Springfield

Jan. 13, 2018 - Board/Members' Meeting (Winter Conv.):
Embassy Suites, East Peoria

Exact location, committee meeting times & other details will be published in the ILICA News and sent to members via mail and/or email.

2017 BOARD MEMBER MTG. ATTENDANCE

A = absent P = present C = cancelled meeting							
Area / Director	Jan	Mar	May	July	Sep	Nov	
Pres: Lee Bunting	P	P	P	P	P		
VP: Grant Curtis	A	P	A	P	A		
1st VP: Steve Anderson	P	A	P	P	P		
Area 1 - Brian Brooks	P	P	A	A	P		
Area 2 - Stuart Anderson	P	P	P	A	A		
Area 3 - Wes Litwiller	P	P	A	P	P		
Area 3 - Joe Streitmatter	P	A	A	P	A		
Area 4 - David Kennedy	P	P	P	A	A		
Area 4 - John McCoy	P	A	A	A	A		
Area 5 - Earl Mast	P	P	P	P	P		
Area 6 - Jon Seevers	P	A	P	P	P		
Area 6 - Scott Day	P	P	A	A	A		
Area 7 - Vacant							
Area 8 - Norm Kocher	A	A	A	A	A		
Area 8 - Tom Beyers	P	P	P	P	P		
Associate Dir: Brad Baker	A	P	A	P	P		

TREASURY WITHDRAWS PROPOSED REGULATIONS AIMED AT MINIMIZING VALUATION



Proposed section 2704 regulations were withdrawn in regulatory review ordered by President Trump

October 5, 2017

In August of 2016, the US Department of Treasury issued a set of complex proposed regulations designed to expand the Internal Revenue Services's (IRS) ability to challenge valuation discounts claimed for estate, gift and generation-skipping tax purposes. The proposed code section 2704 regulations, which were viewed by the estate planning community largely as ambiguous and beyond the scope of the statute, elicited over 28,000 (overwhelming negative) comments filed with the Treasury.

On April 21, while the Treasury was pondering this avalanche of commentary, President Trump issued Executive Order 13789, an instruction to reduce tax regulatory burdens. In response, the Treasury issued an interim report on June 22 identifying eight offending regulations. The proposed regulations

under section 2704 dealing with restrictions on liquidation (affecting valuation discounts) were among those identified.

In a report issued by Treasury Secretary Steven T. Mnuchin dated October 2, 2017, and titled "Identifying and Reducing Tax Regulatory Burdens," the Treasury announced its plan to officially withdraw "entirely" the proposed 2704 regulations. The report does not mince words. In siding with the views of many commentators, the report describes the proposed regulations as "web of dense rules and definitions" and their approach to artificial valuation discounts as "unworkable." The report goes on to state:

Treasury and the IRS currently agree with commenters that taxpayers, their advisors, the IRS, and the courts would not, as a practical matter, be able to determine the value of an entity interest based on the fanciful assumption of a world where no legal authority exists. Given that uncertainty, it is unclear whether the valuation rules of the proposed regulations would have even succeeded in curtailing artificial valuation discounts.

For now at least, the nightmare of having to interpret and apply these proposed regulations has passed.

Source: <https://www.mwe.com/en/thought-leadership/publications/2017/10/treasury-regulations-valuation-discounts>

CONSERVATION CROPPING
2018
SEMINARS

Managing your inputs for healthy soils...

Save The Dates!

Kankakee – Tuesday, January 23, 2018
Olney – Wednesday, January 24, 2018
Peoria – Thursday, January 25, 2018

Visit www.ccswcd.com for updates & details
as plans come together.

LEADING & EDUCATING

Prinsco has been an industry leader for over 35 years. We've also created online tools to help educate our customers and communities about the benefits of responsible water management practices! Go to our YouTube.com/PrinscoInc to watch and share our "Agricultural Water Management 101" video and find other valuable resources.

SINGLE-WALL **DUAL-WALL** **FITTINGS** **CONTROLLED DRAINAGE** **OTHER PRODUCTS**

WATER MANAGEMENT
SOLUTIONS SINCE 1975

11 manufacturing facilities in the U.S. & Canada

PRINSCO 800.992.1725 prinsco.com

PROUDLY MADE IN THE USA



BUCKEYE WHEEL TRENCHERS—AG/INDUSTRIAL

PRO STRINGER TILE TRIALERS

AG CAM CAMERA SYSTEMS

BUCKEYE/LINK SELF CONTAINED PLOWS

LASER GRADE CONTROL SYSTEMS

DUAL WALL DRAG BOXES/RADIUS CUTTERS

LINK PLOW ATTACHMENTS & UTILITY PLOWS

GPS MACHINE CONTROL

BUCKEYE AUGER BACKFILLERS

MID AMERICA TRENCHERS LLC



Phone: 515-789-2005

375 State St—Dexter, IA 50070

Fax: 515-789-2040

SALES@BUCKEYETRENCHERS.COM

WWW.BUCKEYETRENCHERS.COM

ILICA Ladies Page

13 Christmas Party Themes You've Never Thought Of

You already know the drill during the holiday party circuit: ugly Christmas sweater parties and Secret Santa gift exchanges. But have you ever thought to channel your holiday cheer into more creative outlets (e.g. finessing your pet into a tiny sweater or foisting holiday spirit onto your sad apartment by crafting dozens of decorative baubles with friends)? Allow us to enlighten you with 13 "how have we never thought of this" party options to try this winter.

1. A Sweetsgiving Party

The holidays are best celebrated with all the joy and wonder of Buddy the Elf, which is why it's strongly encouraged to gather with your closest friends to indulge in all the sweet delights you'll shun come New Year's (boooo). Think lots of sprinkles, mini-marshmallows, chocolate syrup, candy, and icing (give or take a plateful of spaghetti). Make it a baking party or have a "bring a sweet treat" get-together with sweet boozy drinks while you're exchanging holiday gifts.



2. Holiday Movie Marathon

Because TBH you will be searching for holiday movies on Netflix anyways, why not have a holiday film fest? Just keep it to less than five films to avoid merry movie fatigue. And if watching hours of movies isn't exciting enough for you or your couch buddies, add some action with a drinking game. Take a shot whenever someone says "Christmas spirit" or whenever anyone in Santa garb is on screen.



3. Après Ski Party

Even if you're not living your dream winter life on the slopes of some powdery mountain, nothing's stopping you from making like you are this holiday! Gussy up your home with traditional ski lodge accoutrements (furry rugs, basically anything wood-finished, a fireplace if you may) and have your guests roll up in their best Fair Isle sweaters and down vests for a night of hot chocolate, pints of beer, and s'mores by the fire-side. Cozy!



4. Craftstravaganzaa

At the beginning of the holiday season, gather your friends together to channel your inner domestic goddesses with a party that revolves around—you guessed it—crafting. *Oprah voice* "Bring on the felt poinsettias!" Learn how to construct wreaths together, bedazzle some ornaments, cut and print homemade holiday cards, or even set up an elaborate gifting table (paper, ribbons, and labels galore) to wrap together—all while snacking and sipping on holiday treats and cocktails.

5. Yule Ball

Holiday parties involving mistletoe usually involve a good deal of awkward lingering and shame, but that's probably because no one was under the impression they were at a themed ball (because they weren't). Until now. Recreate your own epic Yule Ball with some upbeat holiday-themed music (dance-y numbers encouraged), a dress code, a considerable amount of spiked punch and hors d'oeuvres at the ready, and some strategically placed mistletoe branches.

6. Reverse Christmas In July

Christmas in July is a time-honored mid-summer party favorite. In the summer's hottest month, people pretend it's Christmas—complete with a tree, gift exchange, and hearty meal. Well, turn the tables on this tradition with a beach-themed romp in the depths of winter. Beach balls, mojitos, everyone's favorite *Christmas with the Beach Boys* album, and ample sunscreen are a must.



7. Chrismukkah Party

Seth Cohen was on to something when he merged together two of the most present-filled holidays into Chrismukkah. Throw an all-denominations holiday celebration and decorate with trinkets from every creed—a Christmas tree for, well, Christmas, dreidels for Hanukkah, and a kinar candle holder for Kwanzaa, to name a few—and spend the evening learning about one another's holidays (and probably watching *The O.C.*).

ILICA Ladies Page (cont.)

8. Cherry Cocktail Potluck

Instantly upgrade a holiday potluck by asking friends to bring their favorite cocktail mix instead of food. Candy cane martinis, eggnog, spiked co-coa...just be ready for a very rowdy rounds of carols towards the end of the night. (Oh, and you should probably actually have some food there, as well.)



part of the fun. Have your friends come over with one of last Christmas' cast-offs—a leopard-print Snuggie, an automatic-twirling spaghetti fork, or a hot-pink clip-on tie. Make sure everyone's gifts are wrapped and then play a version of "White Elephant," where people can pick from the pile or steal someone else's new acquisition. Always remember: One person's trash is another's treasure!

9. Pet Holiday Party

Because cats and dogs like nothing more than to be dressed up (as you can clearly see from how happy this cat looks), why not throw a party for them and their adorable outfits? Imagine: a gathering with multiple puppies dressed in Santa hats. If that's not Christmas joy, we don't know what is. Bonus points if you can construct a makeshift photo area complete with an instant camera so that you and your friends can take holiday-themed, squee-worthy photos with your fluffy pets. Just think of all the photo opportunities for next year's holiday card.



13. 12 Days Of Appetizers

Christmas cookies are great, but that doesn't mean that we aren't as excited about savory holiday snacks (cheese plates and charcuterie, anyone?). Instead of hosting a cookie swap, have friends

bring their favorite seasonal appetizers for an app-only potluck—no main dishes invited! And yes, have one person bring cookies for "dessert."

Source: <http://www.marieclaire.com/culture/g1053/christmas-party-themes/>

10. Gingerbread House Decorating Competition

Why not take a charming childhood tradition and turn it into a competition? Have all of the supplies for traditional gingerbread house building ready, but also choose a judge and a few different categories (such as "Most Creative," "Best Construction," "Best Candy Curating," etc.). If you want to make things more interesting, choose a theme for the competitors (the more random, the better), set a timer, and ready, set, GO!

11. Christmas Carol Karaoke Night

You may not be a fan of unsolicited carolers banging on your door at night, but that doesn't mean you shouldn't enjoy an opportunity to bust out Mariah Carey's "All I Want for Christmas Is You." Either hit up a karaoke bar with private singing rooms or invest in a home karaoke set, and rock out to the holiday's best jams. Like the movie marathon, a complete Christmas playlist may take all night, so consider sticking to a theme, like pop reinterpretations of the classics (Biebs, there's always room for you).

12. Christmas Cast-Off Gift Exchange

Re-gifting—the act of handing off one of your previously received (and unwanted) gifts to someone else—may be considered tacky in some circles, but when everyone's doing it, it's all

Schlatter's Inc.

Intelligent Water Management™



Drainage Plows
GPS Machine Control
Design Software
Custom Fabrication

16179 W 500 S
Francesville, IN 47946
(219) 567-9158
www.SchlattersInc.com





ENVISION

INSURANCE GROUP

Owned and Operated by
Miller Dredge Insurance

Four Area Locations to Serve You

7150 N. University St.
Peoria, IL 61614
(309) 683-1100

456 E. Main St.
Galesburg, IL 61401
(309) 343-1168

300 E. War Memorial Dr.
Peoria, IL 61614
(309) 685-6606

150 S. Main St.
Morton, IL 61550
(309) 263-2400

- Business & Personal Insurance
- Life & Health Benefits • Bonding



Quality Products...Unequaled Service

Over 50 years of manufacturing and supplying corrugated metal pipe and related highway drainage products.

Havana, IL Office (309) 543-2271

Monmouth, IL Office (309) 734-4113

Corporate Office (800) 735-7312

Email: sales@metalculverts.com

www.metalculverts.com



REMINDER: FREE CONTRACTOR CLASSIFIED LISTINGS AVAILABLE

Contact the ILICA Office to learn more 309.446.3700



THINK SAFETY FIRST



1807 179th St North
East Moline, IL 61244
(309) 751-9540

120 East Martin Dr
Goodfield, IL 61742
(309) 965-3300

VERMEERMIDWEST.COM

CONVENTION ADDITIONS

2018



The 2018 ILICA Annual Convention and Members' Meeting promises to be just as productive, educational, and fun as years past, especially with the addition of some new items for 2018!

At the request of members who were blown away by his recent performance at the 2017 LICA Winter Convention in Las Vegas earlier this year, the convention committee secured mindreader Christopher Carter for evening entertainment after this year's awards banquet on Friday. Billed as a psychic entertainer, Christopher Carter has been thrilling audiences nationwide for more than two decades. Christopher has earned feature appearances on The Martin Short Show, and the Donny and Marie Show. One of the most popular performers on college campuses, Christopher has been awarded the highest honor in the Campus Activities industry: Entertainer of the Year in 2005. As a corporate entertainer, Christopher has created custom presentations for some of the nation's top corporate groups, including Sprint PCS, Harley-Davidson, Bristol Myers Squibb, Phillips Electric, Wells Fargo, The Million Dollar Round Table, and many more. We are extremely excited to welcome Christopher, and his "must-see" performance to our convention this year. So much so, ILICA is encouraging members to invite family, friends, and employees to the event. For these extra guests, simply indicate on the convention registration form for a single day attendance for Friday's dinner to receive a banquet dinner AND entertainment for the evening, or check the box for "Friday Entertainment ONLY" under the "Employees" section.

As a new education option, made possible by a grant received through partnership with the United Fire Group and Prins Insurance state LICA insurance program, ILICA will be



CPR

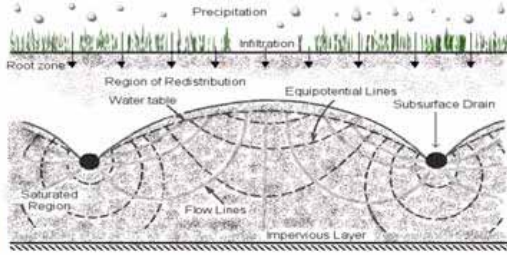
offering two, free CPR and AED certification courses for members and employees during convention. Thursday morning's CPR course will be held for the ladies only, while the open CPR course on Friday afternoon will be open to all other members, associates, and employees at no additional charge! Simply indicate on the convention registration if you plan on attending, as this is a hands-on training requiring a certain number of mannequins. Please note the special "Employees" section of the registration to sign up employees that will only be attending this course during convention.

And for those that don't want the fun of convention to end or for those that prefer to wrap up the event with a relaxing beverage, the post convention tour to J.K. Williams Distilling in East Peoria should meet your needs...however you look at it. While an optional activity after convention is nothing new, J.K. Williams Distillery has only been around in its present state since 2012. "[...T]he descendants of bootleg whiskey-making master J.K. Williams, []feel a certain responsibility to bring craft whiskey-and bourbon-making back to the Peoria area. [Their] great-great-grandpa was a family man with an extraordinary work ethic and an undeniable talent for making some of the best whiskey of his time." Using the Williams's family recipe from decades ago, Jon, Kristin, Jesse and Kassi Williams (two couples bearing the same combined initials as those of J.K. Williams) are "[...] in the midst of raising families in Central Illinois while creating [their] own craft whiskey legacy [...] taking J.K.'s vision into the future while retaining the heritage of incredible small-batch whiskey that is tied to the Williams name [...]" J.K. Williams tours and tastings occur every hour on the hour on Saturdays from 12-5p.



Hopefully, the 2018 ILICA Annual Convention and Members' Meeting will be able to provide some new opportunities and activities for contractors, associates, and employees at no additional charge. The convention committee would again encourage members to invite other members, family, and employees to share in these great events. And don't forget that new 2017 members receive FREE convention registration for all 2.5 days!





The Extension Connection

ONLINE TOOLS FOR WATERSHED-SCALE DRAINAGE DESIGN

Source: Dr. Richard Cooke, University of Illinois at Urbana-Champaign

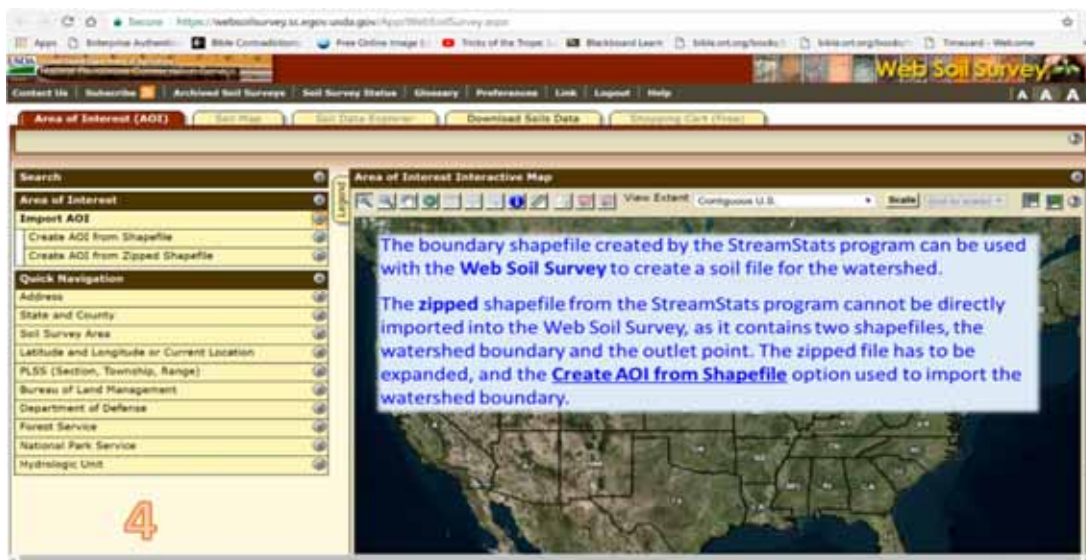
Although drainage design is typically done at the field level, there is benefit to identifying the watershed in which the field belongs. For example, such knowledge can to size a main, not solely based on the requirements of a current field or project, but also taking into account the requirements of other fields in the watershed that make need drainage at a later date. The contractor can produce a map with existing drainage systems, contour lines, and soil polygons, that can be used to present stakeholders in a watershed with a holistic plan for installing drainage systems in the most economical manner. There are several online tools that make it easy to produce such a map. The focus of an article in the June 2016 issue was the creation of contour lines from LiDAR data available online. In this issue, the focus is on **StreamStats** (streamstats.usgs.gov/ss/), a USGS web-based routine that can be used to create the watershed upstream of an outlet location in a water course, and the **Web Soil Survey** (websoilsurvey.sc.egov.usda.gov/App/WebSoilSurvey.aspx), a USDA web-based routine that can be used to create a soil map for the watershed. The use of these routines is presented in a series of six figures.

1 Step 1: Use the map or the search tool to identify an area of interest. At zoom level 8 or greater, State/Region selection will be enabled. Latitude/longitude coordinates can be entered here. Base layer can be changed. Watersheds can be delineated at zoom level 15 or higher.

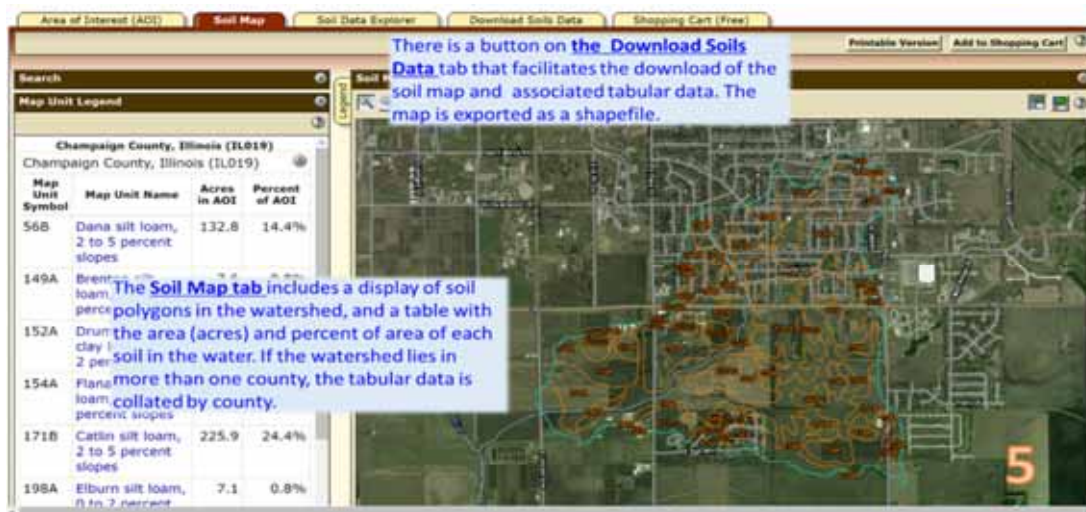
2 Step 2: Click the "Delineate" button to activate the delineation tool. To delineate a watershed, click the box above, then click the required outlet point on a stream.

3 Step 3: Your delineation is complete. You can now click "Get", "Get Shapefile", or "Download Data" to download your results, or choose a state or regional study specific Section ID (available). Click "Get" when you are ready. Contractors are most familiar with shapefiles. They can be imported into most design software. The watershed, that is, all the area contributing water to the specified outlet, is shown on the map. A compressed (zip) file with the watershed boundary and the outlet point can be downloaded for use with a GIS or design program.

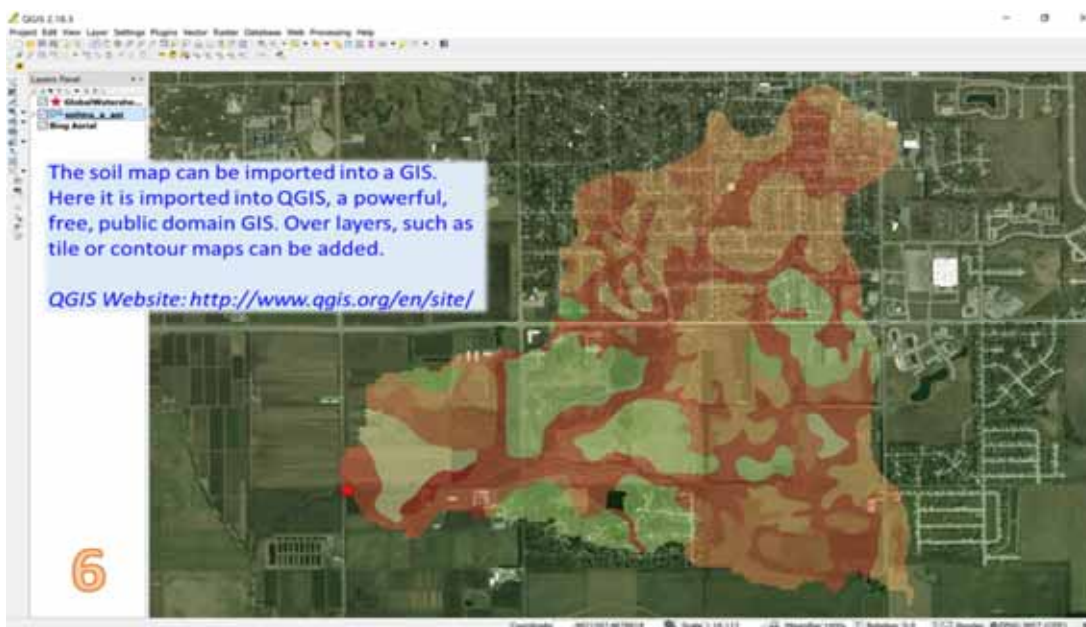
ONLINE TOOLS FOR WATERSHED-SCALE DRAINAGE DESIGN (CONT.)



4



5



6



Registration Form

Illinois LICA Convention & Members' Meeting



Embassy Suites Hotel & Conference Center - East Peoria, IL
January 11 - 13, 2018

THINK SAFETY ACT SAFELY

Pre-Registration Fee: <u>Must be received in our office by January 2, 2018</u>		Cost of registration after January 2, 2018	
Full Participation (3 days)	One Day Participation	Full Participation (3 days)	One Day Participation
Individual \$205	Individual \$100	Individual \$250	Individual \$120
Couple \$315	Couple \$155	Couple \$360	Couple \$185
Child (5 - 12) \$90	Child (5 - 12) \$55	Child (5 - 12) \$115	Child (5 - 12) \$70
<i>(Under 4 free)</i>	<i>(Under 4 free)</i>	<i>(Under 4 free)</i>	<i>(Under 4 free)</i>

Indicate which day(s), meals, and special events you plan to attend

Thursday: <input type="checkbox"/> All Meals or <input type="checkbox"/> Breakfast <input type="checkbox"/> Lunch <input type="checkbox"/> Dinner <input type="checkbox"/> Ladies CPR	Friday: <input type="checkbox"/> All Meals or <input type="checkbox"/> Breakfast <input type="checkbox"/> Lunch <input type="checkbox"/> Dinner <input type="checkbox"/> Open CPR	Saturday: <input type="checkbox"/> Lunch NOTE: Breakfast on your own in hotel atrium
----------------------------------------------------------------------------------------------------------------------------------------------------------------------------------------------------------	------------------------------------------------------------------------------------------------------------------------------------------------------------------------------------------------------	-------------------------------------------------------------------------------------------------------

Attendee Name: _____ Spouse's Name: _____

Address: _____ City: _____ State: _____

Company Name: _____

Additional Name(s): _____

Price of registration includes all meals & activities listed, unless otherwise noted.



Total Enclosed: \$ _____ * Payable to: ILICA
 PO Box 474
 Brimfield, IL 61517
 Fax: 309.446.3744

*Septic Training fees not included. Please complete additional Septic Registration Form.



Make your hotel reservations today! Call 1-800-Embassy or visit Hilton Embassy Suites East Peoria
 website: www.embassysuiteseastpeoria.com and mention the **IL Land Improvement Block** or enter code **ILI**.
 Please make your reservations before **December 20, 2017** to ensure your guaranteed room rate of \$124 plus tax.

Special Dietary Needs	<u>EMPLOYEES</u> <u>Friday Open CPR Only</u> YES <input type="checkbox"/> How Many? _____ <u>Friday Entertainment Only</u> YES <input type="checkbox"/> How Many? _____ FREE employee activities!	<u>LADIES</u> <u>Thursday CPR</u> Indicate Above <u>Friday Outing</u> YES (check all that apply) <input type="checkbox"/> Facial _____ Manicure _____ Hairstyle _____ Pedicure _____	<u>POST TOUR</u> <u>JK Williams Distillery</u> Tours on own, every hour on the hour Saturday: 12 - 5 pm 526 High Point Lane East Peoria, Illinois
------------------------------	--------------------------------------------------------------------------------------------------------------------------------------------------------------------------------------------------------------------------------	---------------------------------------------------------------------------------------------------------------------------------------------------------------------------------------------------------------	-------------------------------------------------------------------------------------------------------------------------------------------------------------------------

2018 ILICA Convention Schedule

Embassy Suites Hotel
100 Conference Center Drive, East Peoria, Illinois

January 10th - 13th

Wednesday, January 10th

- 3 - 4 pm Convention Committee/Hotel Staff Meeting
- 5 - 6 pm **Registration Open & Cash Bar**
- 5 - 7 pm Exhibitor Setup

Thursday, January 11th

- 8 am - 4 pm Registration
- 8 am Breakfast in Exhibit Hall/Exhibits Open (Through 7:30 pm)
- 8 am - 12 pm Education: Septic Training (3 CEUs) - *Doug Ebelherr, Chase Environmental*
- 9 - 10 am Education: JULIE Training/Updates - *Roger Watwood*
- 9 am - 12 pm Ladies Activity: Adult/Child CPR & AED - *Grey & Associates*
- 10:30 - 11:30 am Education: When Do I Need a Section 404 Permit - *Donna Jones, ACOE*
- 12 pm Lunch (New Members Announced)
- 12:30 pm Partner Reports - ACOE, National LICA
- 1 pm Ladies Activity: In-house craft & activities
- 2 pm Exhibitor Group Photo
- 2 - 3 pm Education: Distracted Driving - *UFG*
- 3 pm Break
- 3:30 - 4:30 pm Education: Trench Safety - *Bruce Mosier, Prins Insurance*
- 4:30 - 5 pm Education: ADMC Update - *Steve Baker*
- 4:15 pm Nomination Committee
- 4:30 pm Awards Committee
- 5 pm Hospitality Hour in Exhibit Hall
- 5:45 pm Convention Chair Welcome
- 6 pm Kick Off Dinner
- 7 pm Silent Auction Closes
- 7:15 pm LIVE Auction
- 9 pm - 1 am Associate Hospitality Rooms Open

Friday, January 12th

- 7:30 am Devotions
- 8 - 11 am Registration
- 8 am Breakfast in Exhibit Hall/Exhibits Open (Through 12:30 pm)
- 9 - 10 am Education: *Dustin Courson, CPA, Courson & Associates*
- 10:30 - 11:30 am Education: Drainage Law - *Jim Ayers, Shonkwiler & Ayers*
- 11 am - 4:30 pm Ladies Day Outing: Lunch, Cosmetology
- 12 pm Lunch
- 12:30 pm Partner Reports - NRCS, IADD
- 1:30 - 3 pm Exhibitor Tear Down
- 1:30 - 4:30 pm Education: Adult/Child CPR & AED Cert. - *Grey & Associates*
- 2:30 pm Break
- 5 pm Hospitality Hour in HIJ
- 6 pm Awards Banquet Intro
- 6:15 pm Dinner Served
- 7 pm Awards Ceremony
- 8 pm Entertainment: *Chris Carter, Mindreader*
- 9 pm - 1 am Associates Hospitality Rooms Open

Saturday, January 13th

- 7:30 am Devotions
- 8:15 - 8:45 am Breakfast (on own in Atrium)
- 9 am Final Board of Directors Meeting
- 9 am Associates Committee Meeting
- 9 am Ladies Activity: In-house craft & demo
- 9:15 am Members' Meeting & Election of Officers
- 10:45 am Break
- 12:30 pm Lunch & Convention Committee Meeting
- 1:30 pm On Your Own Optional Tour: JK Williams Distillery (tours every hour)

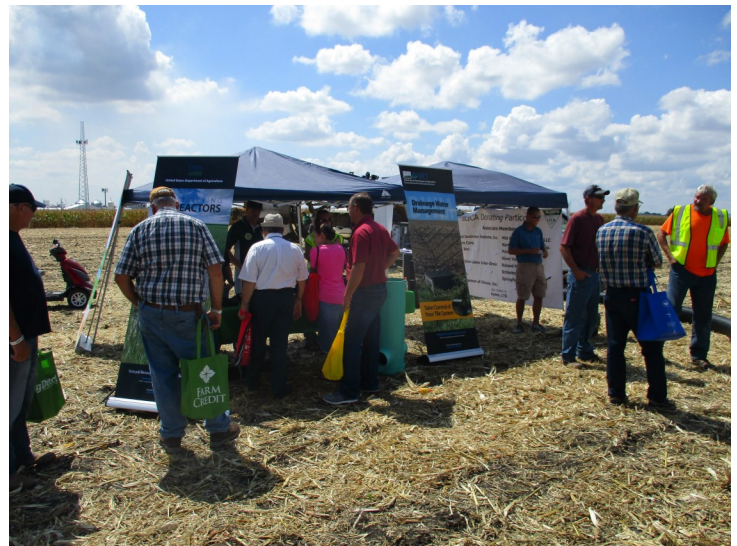
HIGH PROFILE BIOREACTORS

Any idea what's better than one high profile field demonstration by ILICA on a new conservation practice? Well, two high profile field demonstrations within a month, of course! Mixing two progressive farmers' dedication to water quality with the resources of valuable partners, volunteer members, and perfect weather, proved to be the precise combination required to educate crowds of farmers, contractors, and the general public about denitrifying woodchip bioreactors.

Slated for over 100,000 attendees during the last three days of August, the 2017 Farm Progress Show (FPS) in Decatur, IL was comprised of over 600 vendors, encompassing 90 acres. Illinois LICA was once again a visible presence at this event with a static booth display within the Partners for Conservation tent in Progress City and with a sizable in-field demonstration at the north end of the FPS. While the booth display educated dozens of attendees about ILICA and the various conservation practices within or near Progress City that ILICA was involved with over the years, the in-field demonstration drew hundreds of goers interested in witnessing drainage tile installation and in learning about denitrifying woodchip bioreactors. Groups of attendees chased half a dozen tile plows installing laterals around the 30 acre field and crowded around an approximately 30'x40' woodchip bioreactor located within the center of the field on a submain of the drainage system. At the bioreactor, a number of local NRCS and SWCD staff were on-hand to answer questions about the what, why, and how of bioreactors. Even a number of volunteer ILICA contractors were witnessed answering questions about tile drainage and the new conservation practice as they actively worked on-site.

Almost exactly a month later, the new partnership developed by Illinois Farm Bureau with ILICA, NRCS, and the University of Illinois succeeded in getting its first bioreactor in the ground near Geneseo, IL. Drawing a more local attendance of approximately 60, this event showcased a 6'x32' bioreactor offset from a waterway at the edge of a field on Todd Ver-Heecke's farm just west of town. Once again, partners were on-hand to educate attendees, including numerous media outlets and personnel, on what bioreactors are, what they look like, how they function, and why they are important here in Illinois. Though a smaller venue compared to the Farm Progress Show, this high profile event and partnership promises to reach a similar sized audience, based on the scale and variety of media coverage (before and after) and on this particular partnership's projected lifespan of 5 years. Furthermore, this site will be monitored by U of I to gather additional research data on the effectiveness of bioreactors overtime.

Partnerships and projects like these are critical to showcase the conservation and agriculture industries' involvement and commitment to nutrient loss reduction goals and to water quality improvement, particularly here in Illinois. Not only are



Farm Progress Show pictures (top to bottom): Attendees learned from NRCS & ILICA about bioreactors, while viewing the exposed practice (notice one style of distribution manifold design). Crowds followed tile plows around the site as lateral lines were installed. The NRCS, SWCD, and Agri Drain were on-hand with display models and design sets to answer questions.

HIGH PROFILE BIOREACTORS

(CONT.)



these types of projects and events highly educational for agriculture producers and the general public, but they also provide ILICA contractors hands-on experience and education on new conservation practices; more than likely the same conservation practices that a customer may ask about in the very near future.

The recent success of these two, high profile denitrifying woodchip bioreactor projects could not have occurred without our valuable ILICA partners, associates, and contractors. We sincerely thank the NRCS for all the technical assistance, Illinois Farm Bureau for investing in a long term partnership focused on getting conservation on (or into) the ground, the University of IL for providing continued research on these new conservation practices, producers David Brix and Todd VerHeecke for taking initiative to enhance the local water quality leaving their farms and for agreeing to public demonstrations, all our volunteer ILICA contractors that donated their time and expertise, and the following associate members for their donations:



- Advanced Drainage Systems, Inc.
- Agri Drain Corporation
- Altorfer, Inc.
- Birkey's
- Bower's Great Lakes Inter-Drain, Inc.
- BRON
- Fratco, Inc.
- Martin Equipment of Illinois
- Mid-America Trenchers, LLC
- Northland Trenching Equipment, LLC
- Thornton Precision AG
- Prinsco, Inc.
- River Valley Pipe, LLC
- Roland Machinery Co.
- Schlatter's, Inc.
- Springfield Plastics, Inc.
- Xylem, Ltd.

IFB Partnership Project pictures (top to bottom): Over 60 people attended the three hour demonstration, including local media, farmers, and general public Attendees viewed the filling of the bioreactor with woodchips near the end of the event. The completed denitrifying woodchip bioreactor at the edge of the field, offset from waterway. Xylem, Ltd. supplied the many cubic yards of woodchips with certain characteristics needed for these projects. (For additional coverage on these events, and other ILICA demonstrations, visit www.ilica.net and check out our photos, videos, and other shared media.

FEATURED NATIONAL LICA BENEFIT: MACK TRUCKS'S GROUND BREAKER



As anticipated Jerry Biuso, National CEO, has worked with Mack Trucks to obtain a member benefit for contractors' vehicle fleets. Mack Trucks's new "Ground Breaker" program offers 36 months of Extended Purchase Coverage and Premium Preventative Maintenance on eligible Pinnacle & Granite models that are financed with Mack Financial Services, at no additional charge to LICA members! With over 400 Mack service locations around the nation, this new benefit promises to give LICA contractors the peace of mind they deserve, while also reducing their total cost of ownership.

For more information about this benefit or any of our LICA benefits, please call the ILICA office at 309.446.3700.

Mack Pinnacle™ (Day Cab & Sleeper)	Mack Granite® (GU7 & 8)
36 month / 300,000 miles (483,000 km)	36 month / 250,000 miles (402,500 km)
Engine Plan 2 Protection Plan	Engine Plan 2 Protection Plan
ExhaustAfterTreatmentSystem (EATS) Protection Plan	ExhaustAfterTreatmentSystem (EATS) Protection Plan
mDRIVE/mDRIVE HD Transmission & Clutch Protection Plans (including Severe Duty)	mDRIVE/mDRIVE HD Transmission & Clutch Protection Plans (including Severe Duty)
Engine Towing	Engine Towing
Premium Maintenance Plan 2	Premium Maintenance Plan 2
GuardDog Connect, Mack OneCall & Assist	GuardDog Connect, Mack OneCall & Assist

Program Period

Eligible vehicles must be purchased and warranty registered by October 31, 2017, and all funding with Mack Financial Services must be completed by December 31, 2017.

Program Details

Financing from Mack Financial Services:

- No down payment for qualified buyers.*
- Delayed first monthly payment for up to 90 Days for qualified buyers.*
- Maximum Contract Term of 60 months.*
- *Subject to MFS approval.

NOTE: Final approved transaction terms including down payment are subject to standard MFS credit underwriting guidelines and advance policy. MFS reserves the right to amend or cancel the program at any time without notice. Approvals will state the program terms and any other conditions deemed appropriate by MFS. Except as explicitly described above, program rates may not be combined with any other program or offer. No additional rate discounts are available. This offer is available to U.S. residents only.

Improving Illinois farmland for 50 years

In 1966, Advanced Drainage Systems was the first company to manufacture plastic agriculture pipe in the United States. Today ADS is proud to continue its support of the agriculture industry.

At ADS we have an unmatched production selection for the ag market:

- 3"-24" (75-600 mm) singlewall pipe & fittings
- 4"-60" (100-1500 mm) dual wall pipe & fittings
- Water Control Structures

For more on ADS products please contact:
David Randolph, Northern/Central Illinois 217-855-7286
Ryan Carter, Southern Illinois 618-614-8556

www.ads-pipe.com

© 2017 Advanced Drainage Systems, Inc. 05/17 MH

"SOCIALIZED"

Follow ILICA on Social Media

TWITTER

Search handle @IllinoisLICA to view recent event tweets and industry retweets

FACEBOOK

Use Illinois LICA's Page to view Association photos, videos, and events

Don't forget to SHARE & LIKE us!

CALENDAR OF EVENTS

Illinois

Board of Directors Meeting Saturday, November 4, 2017

Hampton Inn
3185 S Dirksen Pkwy, Springfield, IL 62703
Committee Meetings: 10 am - 1 pm
Board Meeting: 2 pm

2018 ILICA Convention & Members' Mtg. January 11-13, 2018

Embassy Suites
100 Conference Center Dr., East Peoria, IL 61611

National

2018 LICA Winter Convention February 20-24, 2018

Hyatt Place + Hyatt House
560 King Street, Charleston, SC 29403
Room Rate: \$159/night (plus taxes & fees)
Make reservations by January 5th; Call: 800-993-4751
Group name: Land Improvement Contractors

ADVERTISERS INDEX

Advanced Drainage Systems, Inc.	18
Agri Drain Corp	23
BM Truck Equipment, Inc.	19
Bower's Great Lakes Inter-Drain, Inc.	4
BRON	23
Brown Bear Corp	2
E-K Petroleum, LLC	19
Envision Insurance Group, LLC.	10
Fratco, Inc.	20
JCG Midwest Drainage Products.	2
Jim Hawk Truck Trailers, Inc	23
Martin Equipment of Illinois, Inc	24
Metal Culverts, Inc	10
Mid America Trenchers, LLC	7
Mike Cooks' Soil & Water Mgmt. Systems	2
Northland Trenching Equipment, LLC	3
Precision Intakes, Ltd	23
Prins Insurance, Inc./United Fire Group.	24
Prinsco, Inc	6
Roland Machinery Co.	24
Schlatter's, Inc.	9
Springfield Plastics, Inc.	24
Vermeer Midwest, Inc	10



LEE MILONE
OWNER / MANAGER

Phone (618) 395-8046
Fax (618) 393-4702

1-800-247-7972

4678 Weinmann Dr., Suite A
Olney, IL 62450

"WE TAKE PRIDE IN OUR WORK AND SERVICE WHAT WE SELL"



"Service is Our Business"

See us for your farm, commercial and industrial needs.

We carry a full line of Shell Rotella and Pro Performance products.

Roger Bragg	Office:	Rick Bennett
217-259-1996	217-728-7195	217-246-5162



Mark
Your
Calendar

» UPCOMING EVENTS

FRATCO

A century of drainage innovation

MODERN DRAINAGE.

Old-school grit.



FRATCO XD

We pioneered virgin pipe production over 50 years ago. Today, we still offer the most durable 100% virgin pipe on the planet.

FLEXCORR **F**

The durability of dual wall meets the simple installation of flexible pipe. Lay Smooth-Corr pipe easier than ever before.

SAFETY FEATURE: MOUNTING & DISMOUNTING EQUIPMENT

To lessen your risk of injury, follow these simple mounting and dismounting instructions for trucks and other construction equipment and machinery.

Because jumping down off large equipment is a common practice for construction workers, it's no surprise that lower back, knee, ankle and neck injuries occur more frequently. Regardless of the type of equipment you work with, mounting and dismounting safely should always be top of mind.

What You Can Do

To lessen your risk of injuries, follow these simple mounting and dismounting instructions for trucks and other tall equipment or machinery.

- When using a new piece of machinery, become familiar with proper mounting and dismounting procedures.
- When a person jumps from a height of more than one foot, the force that goes through the body is about 14 times the person's body weight. In other words, a 165-pound man who jumps out of construction equipment or any other high surface is exerting 2,310 pounds of force on his body. This can cause injury to bones, tendons and cartilage. And if you're doing this multiple times every workday, the damage to the body can be extensive.
- When dismounting and mounting, maintain three-point contact. This means having contact with the construction equipment by either one foot and two hands or one hand and two feet. The smaller the triangle you form with your body, the more stable you are.
- Always face the vehicle, both when mounting and dismounting.
- Look at the surface below before stepping and make sure it is even to prevent ankle and knee injuries.
- Never mount or dismount moving equipment.
- Do not mount or dismount with anything, including tools, in your hands. Not only does it throw the body off-balance, it also reduces your chance of recovering your balance if you do slip. Use a drop rope to raise and lower supplies, tools and equipment instead.
- Handholds and footholds are on the equipment for a reason—use them.
- Wear appropriate clothing. Loose or torn clothing can get caught on equipment when you are jumping down instead of climbing down. In slippery conditions, wear proper footwear to prevent slipping hazards.

- Proper vehicle maintenance also contributes to the safe mounting and dismounting of equipment. Make sure running boards, treads, steps, footholds and platforms are kept clear. Hazards like ice, snow and grease could cause slips, trips and falls.



Discussion Date: _____

Employee Participants

TECH TALK: HOW TO TIGHTEN TRACK LIFE



Deadlines can adversely affect decision making. A deadline can lead to shortcuts that result in improper machine setup and poor choices in operating techniques. In short, in attempting to meet a job

closing date, you sacrifice long-term profitability in exchange for saving a little time today. That isn't a cost effective way to manage tracked machines. With some advance thought and a little preparation, you can improve undercarriage wear life by matching the correct undercarriage to the job site, which in turn lowers owning and operating costs. And as a result, your tracked machines operate more efficiently.

Tim Nenne, undercarriage market professional for Caterpillar, helps customers extend undercarriage life. One suggestion tops his list:

"The biggest single step a customer can take to improve undercarriage life is to maintain track tension at the correct specification, whether it's a track-type tractor, track loader, or hydraulic excavator," he said. An improperly adjusted undercarriage shortens the life of components.

The same machine setup will not necessarily work across different applications. You need to prepare the machine for the underfoot conditions, temperature, terrain and type of work.

"It's worth the time to properly set up the machine for the application because it will give you the lowest owning and operating cost," Nenne says. A crawler dozer can benefit from a different machine balance when it is dozing than if it's ripping, or the underfoot conditions may require a different type of shoe.

Operator habits are equally important in controlling undercarriage wear, Nenne says. His top tip for operation: "When running a track-type machine, your operating costs will go down if you reduce the number of unproductive miles." He suggests undercarriage wear also be measured in the number of miles traveled and not just in operating hours. Newer machines monitor travel distance in both forward and reverse. The second most important operating tip for tracked machines is to avoid high speeds to reduce wear on internal and external undercarriage components. For hydraulic excavators, Nenne's No. 1 recommendation is to design the worksite so the operator is digging over the front idlers, if at all possible, to minimize structural stress.

Most crawler dozers come from the factory with sealed and lubricated track, commonly called SALT. Today, a smaller number of customers are doing pin and bushing turns on small to medium dozers because of increased labor costs. This holds true unless the machine is operating in an abrasive application. Manufacturers now have been able to lengthen bushing and sprocket life to the point where turns are less of a necessity in

order to obtain the most life out of a link-roller system. Nenne recommends wet bushing turns on dozers. During a turn, the bushing is rotated 180 degrees and the pin is flipped end-for-end. This provides a new wear surface and resets the track pitch, which then allows the customer to get the most life out of the link-roller system.

SALT has been installed for quite some time on large machines to get maximum life from the more expensive link-roller system. There is still good value in performing a bushing turn in large machines in order to maximize the life of the link-roller system. Internal wear is not a significant factor on these machines, so turns are for external wear. Where ambient temperatures are high, dry track is used with no urethane seals or lubricant, but typically there are special high-temperature lubricants in the roller system.

A hydraulic excavator undercarriage may get additional value by doing a pin and bushing turn. In some cases, excavator shoes, rollers and idlers can be reused for a second link assembly. All this will save money, but only with proper undercarriage management.

Most manufacturers now produce small and medium excavators with greased track for improved internal wear and quieter operation. But you still must manage greased track because internal wear exceeds external wear in many applications. The grease does not remain in place for an extended period of time like oil does in SALT. To calculate internal wear on greased track, determine the pitch length across four joints, measuring from the left side of the first pin to the left side of the fourth pin. Match that measurement against the manufacturer specifications to gauge the amount of wear. When it's 100 percent worn, you can perform a pin and bushing turn to reset the wear back to zero if you judge the turn to be economically feasible. Dry turns may be appropriate for excavator track because they don't move as much as dozers.

Nenne, with more than 20 years of undercarriage experience in research, testing and field work, advises to compare costs beforehand. "In order to get the best economical life from a link-roller system, you should weigh the cost of turning the pins and bushings against running to destruction."

Some larger hydraulic excavators use a SALT seal that keeps grease in place for a longer period of time. That allows the large machines to run longer without internal wear and prolongs the service point and reduces overall undercarriage costs.

The goal is to get the most life from an undercarriage. To do that, Nenne has two words: "Manage it." Make sure the machine is set up properly for the application and the operator is practicing the correct techniques.

Source: Reprinted with permission of the Association of Equipment Management Professionals from their Equipment Manager magazine; article author: Tim Nenne

BRON
POWER TO PERFORM

www.rwfbron.com

- Standard Oscillating Track Frames
- Positive Drive On-Board Reel
- Enhanced Operators Visibility
- FOPS/ROPS Certified
- Tri-Core Cooling System
- Standard DL850 Drainage Plow Increases Strength and Durability
- Stronger Structure Powered by Heavy Duty Cylinders

BRON 550

SELF-PROPELLED DRAINAGE PLOW

AUTO STEER READY | LOW GROUND PRESSURE
CAT OR CUMMINS ENGINE



1.800.263.1060 | 519.421.0036 | www.rwfbron.com

BRON is a registered trademark of RWF Industries, a division of Roberts Welding & Fabricating Ltd.

Agri Drain has teamed up with ESE to provide:

- Conservation planning and water management system design.
- Drainage and sub-irrigation system design.
- Saturated buffer and bioreactor plans.

USDA financial assistance available to qualified landowners.

Call ESE for a **FREE** site review!

USDA-NRCS Certified Technical Service Providers

All plans meet NRCS standards.



Agri Drain
CORPORATION

800-232-4742 | www.agridrain.com

ESE
Ecosystem Services Exchange
Valuing Conservation

888.826.5112 | www.ecoexch.com

Precision Intakes

Full Line of Surface Water Intakes

- 8" & 10" riser with patented 8" & 10" combination Tees. Also 6" square & round risers with patented reducing Tee.
- Constructed of heavy-weight, high-density polyethylene.
- Parts highly adjustable & interchangeable with others on the market.
- Orifice plate placed at tee level or at ground level.
- Exclusive locking device on each part.
- User Friendly-Priced effectively.
- Adaptor available to repair old metal or broken intakes.



Why inventory 2, when 1 serves both!

PATENTED REDUCING TEE



"Dealer Inquires Welcome"

~~PRECISION INTAKES~~

Norm & Coretha Rozendaal
2064 Republic Ave West, Monroe IA 50170
www.precisionintakes.com

(800) 932-7611
(641) 259-2651
Fax (641) 259-3218

**100% VIRGIN RESIN
100% QUALITY
100% OF THE TIME**

- CONSISTENT MATERIAL
- NO BLOWOUTS
- HIGH FLEXIBILITY
- NO SOFT SPOTS

100% Virgin Resin



7300 W. State Route 104, Auburn, IL
800-252-3361 • www.spipipe.com



Goodfield, IL	309-965-2502
Springfield, IL	217-528-4347
Tolono, IL	217-485-6755
Rock Island, IL	309-787-6108
Peru, IL	815-224-4711
Cedar Rapids, IA	319-365-0515
Dubuque, IA	563-588-1950
Ashland, MO	573-657-2154
Palmyra, MO	573-769-2274

www.meoi.com



Contact the salesman in your county for all of your equipment needs.



Unearth your potential.

Protect your tomorrow.

We want to help you unearth your potential by ensuring you have the coverages, service and pricing you need.

Find an independent UFG agent on ufgins.com, or contact Prins Insurance, Inc. at 800-831-8545.

