



## Land Improvement Contractors Of America · Illinois Chapter

*July - August 2011*

Steve Anderson  
*Chairman of the Board*

David Kennedy  
*President*

David Haag  
*Vice President*

Vacant  
*First Vice President*

Janet Burtle-Doubet  
*Secretary*

Bill Dean  
*Treasurer*

### ***Directors***

Brian Brooks  
Dave Hurst

Steve Anderson  
Stuart Anderson

Carol Kiley  
Mike Yordy

Eric Layden  
John McCoy

Brent Breedlove  
Joe Streitmatter

Bill Dean  
Jon SeEVERS

John Barttelbort  
Doug Nicholson

Tom Beyers  
Norm Kocher

Janet Burtle-Doubet  
*Executive Director*

### **Upcoming Events:**

**Drainage Workshop**  
Decatur, IL - August 2 - 4, 2011

**Farm Progress Show**  
Decatur, IL  
August 30 - September 1, 2011

## 3<sup>RD</sup> ANNUAL AREA 3 GOLF OUTING SEPTEMBER 8, 2011 *(pages 6 - 7)*



### **Also Featured Inside**

**Lightning Safety Awareness** *(page 10)*

**Summer Drainage Workshop Registration** *(page 13)*

**Prevailing Wage Act Update** *(page 14)*

Return To: Illinois LICA  
P.O. Box 474  
Brimfield, IL 61517

## ANOTHER ILLINOIS RECIPIENT OF THE LICA SCHOLARSHIP AWARD



Rebekah Seevers, daughter of Jon and Veronica Seevers from Cisco, Illinois, is one of the recipients of this year's \$1000 LICA Scholarship Awards. Rebekah has attended several national LICA conferences and has also helped with ILICA Conservation Expos and conventions in whatever way she's needed. Rebekah, shown above at the winter meeting in Las Vegas this past March, along with her boyfriend Dylan Bargman and her very proud mom .

Rebekah graduated from Monticello High School. She is in the Honors Program at Quincy University

majoring in Math, minoring in Spanish. She is working to receive her teaching certificate to be a High School Math teacher and work in low income schools. She will also be playing volleyball at Quincy University.

While at Monticello High School she was captain of the volleyball and track teams, was involved in basketball, Future Educators of America, Spanish Club, Student Council, Class Officer, Lifesavers (senior leader), Reality Illinois, Marching Band, Peer Mentoring, Tutoring and Relay for Life. She was elected into National Honor Society, Spanish Honor Society, Illinois State Scholar, Senior of the Month, Junior Class Homecoming Attendant and Homecoming Queen. She attended Illini Girls State and is a member of the Cisco United Methodist Church.

**Congratulations Rebekah! You've earned it!**

### Time for New Equipment? Choose Roland

**Reliable Equipment**

- Manufactured to withstand any environment

**Responsive Service**

- Roland provides service on the job site or in their state-of-the-art facilities

**KOMATSU**

Call the Roland Location nearest you today!

<b>Bolingbrook</b> 630-739-7474	<b>Carterville</b> 618-985-3399	<b>Marengo</b> 815-923-4966
<b>Palmyra</b> 573-769-2056	<b>Springfield</b> 217-789-7711	<a href="http://www.rolandmachinery.com">www.rolandmachinery.com</a>

## TAKEUCHI

Parts, Sales & Service  
Open Monday-Saturday

(800) 334-8942

[www.centralilag.com](http://www.centralilag.com)



# The ILICA News



Editor / Advertising Manager  
**Janet Burtle-Doubet**

Chairman of the Board  
**Steve Anderson, Marseilles**

President  
**David Kennedy, Colfax**

Vice President  
**David Haag, Kempton**

1st Vice President  
**Vacant**

Secretary  
**Janet Doubet, Williamsfield**

Treasurer  
**Bill Dean, Mattoon**

Educational Advisor  
**Professor Richard Cooke  
University of Illinois**

The *ILICA News* is the official publication of Illinois Land Improvement Contractors Association, Inc. at 118 E. Knoxville St., Brimfield, IL 61517. (309) 446-3700.

Subscription price is \$25.00 per year, issued bi-monthly: Jan.-Feb.; Mar.-Apr.; May-June; July-Aug. Sept.-Oct.; Nov.-Dec., and includes one annual directory.

## FEATURES

- Another Illinois Recipient of LICA Scholarship Award . . . . .2
- 3rd Annual Area 3 Golf Outing Registration . . . . .6
- 3rd Annual Area 3 Golf Outing Information . . . . .7
- Iowa LICA Field Day Near Melbourne, IA. . . . .9
- Lightning Safety Awareness . . . . .10
- 2011 Picnic and Summer Members Meeting . . . . .11
- August Drainage Workshop Agenda . . . . .12
- August Drainage Workshop Registration . . . . .13
- Contractors Encourage Funding USDA Watershed Projects . . . . . 14
- ADMC Drainage Water Management Training . . . . . 15
- Late Again! This Better Be Good! . . . . . 22

## COLUMNS

- Board Meeting Notice . . . . .3
- Contractor Classifieds . . . . .3
- Presidents Message . . . . .4
- New Members . . . . .5
- ILICA Ladies Page . . . . .8
- Legislative Update: Prevailing Wage Update . . . . .14
- 2011 Committee Members. . . . .16
- Member Application . . . . .17
- ILICA Benefits . . . . .18
- Advertisers Index . . . . .19
- Calendar of Events . . . . .19
- University of IL - Lawn Care For The Summer . . . . .20
- Safety Feature: No Extra Riders On Equipment . . . . .21

### The LICA Creed



Land, the foundation of the Nation  
 The basis of all wealth  
 The heritage of the wise  
 The thrifty and prudent  
 The poor man's joy and comfort  
 The producer of food, fiber and fuel  
 The basis of factories  
 The foundation of banks

All that man builds is from the land. We often take it for granted or even abuse it; And yet many, unthinkingly and unknowingly pass the land by. What man does with the land will be the deciding factor of his survival.



### Meeting Notice

**Regular Board Meeting**

**September 10, 2011 - 2:00 pm**

**Marriott Hotel & Convention Center**

**Normal, IL**

*(see page 19 for map and directions)*

**Committee Meetings - 10 am - 1 pm**



## PRESIDENT'S MESSAGE



Hello from Colfax,

As I write this the summer heat and drier weather has shown up as it normally does this time of year.

The picnic and membership meeting in June was well attended and we were fortunate to have Steve Miller and family in attendance as well. It was a nice break after a very busy spring.

We are working on finding a conservation show site and since the year is passing quickly, it looks like it next year is a better possibility. We still have events to keep us busy in the form of educational workshops, one coming up in Decatur at Richland College in August as well as a little playtime for us hackers at our annual Area 3 golf outing in September. We will also be representing ILICA in the Partners for Conservation

tent at the Farm Progress Show in Decatur in late August.

Our membership continues to grow with active membership 160 strong at this time. Our membership committee continues to do an excellent job of preaching the virtues of the organization to potential members every chance they get. Membership meetings will resume in November and I hope everyone will support the committee as they have in the past.

Before we know it, the crops will begin coming out and our fall season will be in full swing, and somewhere in those long days, we will begin to turn our attention to the 2012 state convention in Bloomington. This year's convention saw the highest attendance in many years and I hope to see even more new faces next year, making 2012 even better.

David Kennedy, President

## CONTRACTOR CLASSIFIEDS FOR SALE



- ♦ 2005 Talbert AC-20 Pintle Hitch Tag Trailer; Black, 22' Flatbed, 5' Beaver Tail, Less than 3,500 miles, Like New: \$ 13,000
- ♦ 1995 Mack CH-350 Mack, Engine Brake, 10C Trans., 3.70 Eaton Rears, 200" WB, Tall 22.5 Tires, A/C, Alum. Fronts, Steel Rears, 2 Line Wet Kit, Alum. Half Fenders, New Clutch, Well Maintained with Records: \$12,000

Call Joe Streitmatter at  
309-696-9861 (cell) or 309-695-2800 (office)

## STADEL ELECTRONICS LASERS

Authorized Service and Sales for Laserplane-Trimble  
Also servicing most other models

**SOLVING YOUR LASER PROBLEMS FOR OVER 30 YEARS**

Call anytime 815-777-0193  
Tom Stadel  
5928 W. Stagecoach Trail  
Galena, IL 61036

### Agri Drain CORPORATION

Your Partners in Water Management

We offer America's most complete selection of water management products for wetlands, ponds, lakes, controlled drainage, and subsurface irrigation. Along with tools, survey and safety equipment, and many hard to find items.

PO Box 458 - 1462 340th Street - Adair, IA 50002  
Fax: 1-800-282-3353 - Email: info@agridrain.com  
www.agridrain.com

**For a FREE catalog or to place an order, call 1-800-232-4742.**



## NEW MEMBERS

### Active Contractors

Theodore J. Shambaugh, V  
 Shambaugh Drainage Corp.  
 203 Valley Road, Monticello, IL 61856  
 Ph: 217-433-9921

# Thank You!

*You may notice a slight difference in the listing of new members above. New member contact information will now be published in this section as they are introduced to the organization. If you already know our newest member, please give him a big ILICA welcome the next time you see him to let him know how glad we are he decided to join!*

## 2011 ILICA DIRECTORY

You should already have the new ILICA directory but if not, please contact Janet as soon as possible to find out why!

This year's publication has more information listed for our contractors as well as a newly revised associate's section which includes web addresses and emails where available.

There is also a center color insert section with photo's from the 2010 Summer National LICA meetings in Peoria and other special events. And as always, the directory includes contact listings for the Illinois NRCS, the Illinois Farm Service Agency and legislative listings by district.



# Heiser Insurance & Financial Services

At Continental Western Group, business insurance is what we do; period. Our single focus is to provide our customers with the business insurance coverage they need today and in the future. Continental Western Group is the Illinois **LICA endorsed carrier** for property and casualty insurance. Contact Tim Neuhauser at Heiser Insurance at 1-800-727-9775 or Continental Western Group directly at 1-800-235-2942 for more information.



*Period!*

**Continental Western Group**

[www.cwgins.com](http://www.cwgins.com)

A BERKLEY COMPANY <sup>SM</sup>



### Illinois Land Improvement Contractors Association - 3rd Annual Area 3 Golf Outing Thursday, September 8, 2011

Coyote Creek Golf Club - 8201 W. Lancaster Road, Bartonville, IL 61607

Shotgun Start 1:00 pm

**Golf & Dinner.....\$ 90.00**

(Includes Green Fees, Golf Cart, Hamburger lunch, Driving range, 2 Beverage tickets, Buffet Dinner & Prizes)

**Golf Only..... \$ 70.00**

**• Dinner Only..... \$ 45.00**

**Registration Form**

**Please RSVP By August 26**

Enclosed is the check PAYABLE TO ILICA

In the amount of \$ \_\_\_\_\_ for the following;

Golf & Dinner  
@ \$90

Golf Only  
@ \$70

Dinner Only  
@ \$45

- 1. \_\_\_\_\_
- 2. \_\_\_\_\_
- 3. \_\_\_\_\_
- 4. \_\_\_\_\_

My preferred foursome is: \_\_\_\_\_  I do not have a preference

Name: \_\_\_\_\_ Phone: \_\_\_\_\_

**Green & Tee Sponsors**

Company Name (To be listed on sign) \_\_\_\_\_

Contact Person: \_\_\_\_\_ Phone: \_\_\_\_\_ Email: \_\_\_\_\_

Yes, we would like to Sponsor  Green or Tee \$150

Please provide our sign (\$35 per sign)

We will provide our own sign (16" x 24")

Use sign from last year's golf outing

**Meal & Outing Sponsors**

I would like to be a lunch sponsor \$ 250.00 \*

I would like to be a Dinner Sponsor \$ 350.00 \*

I would like to be an Outing Sponsor \$ 500.00 \*\*

Enclosed is the check PAYABLE TO ILICA, in the amount of \$ \_\_\_\_\_ for the above sponsorship.

Mail check and this form to: **Illinois LICA - P.O. Box 474 - Brimfield, IL 61517**

\* Lunch and Dinner sponsors will have signage in place at registration table and dining area and receive recognition in the annual ILICA Directory.

\*\* Outing sponsors will have signage (including company logo) in place at registration table, in dining area and at cart pick up location and will receive recognition in the annual ILICA Directory and at the annual Convention and Member meeting.

Outing sponsor logos will be used on all outing promotional material and on the ILICA website.





## 3<sup>RD</sup> ANNUAL AREA 3 GOLF OUTING SET FOR SEPTEMBER 8, 2011

As you know by now, ILICA's third Area 3 golf outing fund raiser is set for **September 8th** so we're counting on YOU to make this year's event as much fun and as successful as the past two! Sponsorship is available for meals, greens and tees or sign up as an outing sponsor and get your company logo on all of the promotion material. **You are welcome to bring your own green and Tee sign or they can be printed by our office** and everyone who participated last year already has a sign at the ILICA office, ready to notify all of our golfers of your support. Of course, there will be the normal newsletter and website coverage of this important event and, **event and meal sponsors will receive additional recognition in the next directory** and at the 2012 Convention and members meeting.

We're also looking for foursomes, which is really ends up making this event so much fun. **Contact your favorite customers, co-workers, friends or relatives and encourage them to be in your group.** You talk them into coming and we'll make sure everyone has a great time. There will be two beverage carts on the course again this year, prizes for the usual putts and drives and the infamous "betting hole" for those confident golfers in the bunch. The added benefit of registering your own foursome is that you'll be sure to spend the afternoon with exactly who you know you'll have the most fun with!

Don't forget, anyone who wants to support ILICA can sponsor a tee or green and add to the overall success of this fun event. There are several contractors and even non-members who have already signed up. The registration and sponsorship form is on the preceding page and is also available on our website, [www.ilica.net](http://www.ilica.net). Our committee members and board of directors will encourage all of our contractors to sign up for this wonderful day and we know that our associate members will support this event with the same enthusiasm we always see from this outstanding group.

**There is plenty of time to get involved.** Don't miss out on this outstanding opportunity to **have fun** working for ILICA! It's not often we can make an offer like that, so take advantage of it while you can! Call Janet at the ILICA office if you have any questions or would like more information and get signed up today !!



- ◆ Sign up for tee or green sponsor signs
- ◆ Get a foursome together with your favorite contractors

- ◆ Join ILICA for this fun outing disguised as a fund raising event
- ◆ 50/50 & Raffle prize drawings following dinner

**Sponsored By:**  
**Peoria Convention  
& Visitors Bureau**  
  
**Peoria, IL**  
  
**309 - 242 - 2222**

Golfing & Sponsorship is **NOT** restricted to Area 3 ILICA Members but is available for **ANYONE** who would like to support ILICA's 2nd annual **FUN Day Fund Raiser!**  
**Contact Janet for more Info!**

WATER MANAGEMENT  
SOLUTIONS





**PRINSCO**  
ENGINEERED WITH INTEGRITY™

For over 30 years, Prinsco has been developing more than just plastic pipe. We've been developing a reputation that's founded on one simple thing: **INTEGRITY**. It's how we design our products, it's how we treat our customers, it's how we do business.

Look for our **GOLD STRIPE** of quality to ensure your pipe has been engineered with integrity.

800.992.1725 | [WWW.PRINSCO.COM](http://WWW.PRINSCO.COM)

CORPORATE HEADQUARTERS: 1717 16th Street NE | 3rd Floor | Willmar, MN 56201  
LOCATIONS: Fairfax, MN | Prinsburg, MN | Rose Creek, MN | Chatsworth, IL | Fort Dodge, IA | Jesup, IA | Bethany, MO | Fresno, CA

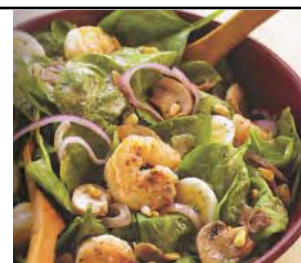


# ILICA LADIES' PAGE

## COMPARE!

### THE PERFECT PANTRY

*In the real world, not everything can be made from scratch, and having the best packaged building blocks is essential for top-notch healthy cooking. Use these classic kitchen swaps to cut calories and boost flavor.*



*Instead of Applebee's Grilled Shrimp 'N Spinach Salad which equals 1040 calories, 11 g saturated fat and 2,380 mg sodium Cook This:*

#### Spinach Salad with Warm Bacon Dressing

##### You'll Need:

- 6 strips bacon, cut into small pieces
- 1/2 red onion, sliced
- 1 cup sliced mushrooms
- 8 oz shrimp, peeled and deveined

##### Salt & black pepper to taste

- 2 Tbsp pine nuts
- 1 Tbsp Dijon mustard
- 3 Tbsp red wine vinegar
- Olive oil (optional)
- 1 bag (6 oz) baby spinach
- 2 hard-boiled eggs, sliced

##### How to Make It:

Heat a large skillet or sauté pan over medium heat. Cook the bacon until crispy, 5 - 7 minutes. Use a slotted spoon to transfer to a paper towel on a plate and reserve.

Add the onion and mushrooms to the hot pan and cook until the onions begin to brown, about 3 minutes. Season the shrimp with salt and pepper and add to the hot pan along with the pine nuts. Cook until the shrimp are pink and firm, no more than 4 minutes (shrimp cook more quickly than nearly any other protein). Stir the mustard and vinegar into the pan; season with salt & pepper. If the pan looks dry, add a splash of olive oil.

Divide the spinach and eggs among 4 plates and top with the hot shrimp mixture and some of the liquid in the pan. Sprinkle with the bacon.

If the idea of a warm bacon vinaigrette doesn't appeal to you, you can replace the bacon with a tablespoon of olive oil to begin with (for sautéing the vegetables, shrimp and pine nuts) and another two on the back end, when you stir in the mustard and vinegar. You'll save about 75 calories per plate, plus you'll boost the meal with a solid dose of healthy mono-unsaturated fat.

This recipe equals 220 calories, 11 g fat (3 g saturated), and 560 mg sodium, plus shrimp is one of nature's greatest sources of selenium, a micromineral that helps reduce joint inflammation and fight off cancer-causing free radicals.

### Nutrition Nuggets

Frozen produce often has higher nutrient density than fresh. But a study in the *Journal of the Science of Food and Agriculture* found that for some vegetables canning degraded as much as 95% of the vitamin C and damaged every B vitamin in the food.

Cut 96 calories from your daily diet and you'll be 10 pounds lighter one year from today.

45% of people eat fewer than five home-cooked meals per week. 17% don't even eat 3.

In an 11-year Japanese study, those who drank the most green tea were less likely to die of any cause throughout the course of the study.

Your blood sugar rises 39 percent less if you toast your white bread.

Compared to iceberg, romaine lettuce has more of just about every nutrient, including 8.5 times more vitamin C.

#### Mayonnaise:

##### Eat This

Kraft Mayo with Olive Oil (1 Tbsp) =  
45 calories  
4 g fat (0 g saturated)  
95 mg sodium

##### Not That!

Hellmann's Real Mayonnaise (1 Tbsp) =  
90 calories  
10 g fat (1.5 g saturated)  
90 mg sodium

#### Barbecue Sauce:

##### Eat This

Stubb's Bar-B-Q Sauce (2 Tbsp) =  
30 calories  
0 g fat  
4 g sugars  
220 mg sodium

##### Not That!

KC Masterpiece Original (2 Tbsp) =  
60 calories  
0 g fat  
12 g sugars  
240 mg sodium

#### Tomato Sauce:

##### Eat This

Classico Tomato & Basil (1/2 Cup) =  
50 calories  
1 g fat  
380 mg sodium

##### Not That!

Newman's Own Organic Tomato & Basil Bombolina (1/2 Cup) =  
90 calories  
4.5 g fat (0.5 g saturated)  
620 mg sodium

#### Yogurt:

##### Eat This

Fage Total 2% Greek Style (6 oz) =  
90 calories  
0 g fat  
7 g sugars

##### Not That!

Yoplait Original 99% Fat Free Strawberry (6 oz) =  
170 calories  
1.5 g fat (1g saturated)  
27 g sugars

#### Peanut Butter:

##### Eat This

Smucker's Natural Peanut Butter, Creamy (2 Tbsp) =  
200 calories  
16 g fat (2.5 saturated)\*  
105 mg sodium

##### Not That!

Jif Reduced Fat (2 Tbsp) =  
190 calories  
12 g fat (2.5 g saturated)  
210 mg sodium

\* Oddly enough, choose the peanut butter with the most fat. Natural varieties like Smucker's are made from nothing but peanuts and salt. That means you're trading hydrogenated oils and corn syrup for more healthy fat.





# IOWA LICA FIELD DAY NEAR MELBOURNE, IA - JULY 27 - 28, 2011

Iowa's Midwest Construction Expo and Field Day will be held on Wednesday and Thursday, July 27

& 28, 2011. The site is located 1/2 mile east of Melbourne, Iowa at 1741 290th Street.

This year, Iowa LICA will be constructing terraces, waterways, a sediment control structure, and installing drainage tile. The focus of the Expo and Field Day is to show contractors the proper checkout methods of conservation projects. Other projects under consideration are septic installation and the construction of a "rain garden". The rain garden will collect the storm water runoff from the Iowa LICA building on site.

There will also be equipment set up for demo operation on the farm site so consider making the short drive to visit our LICA neighbors to the West. Additional information will be available soon on the Iowa LICA website and in the next issue of the National LICA newsletter.



Continental Western Group®

## LICA RECOMMENDED INSURANCE PROGRAM



HOW DOES YOUR POLICY STACK UP?



- POLICIES DESIGNED SPECIFICALLY FOR DIRT MOVERS

- A SAFETY GROUP PROGRAM, OVER \$1,000,000 PAID BACK TO LICA CONTRACTORS IN THE FORM OF A DIVIDEND



FOR MORE INFORMATION, CONTACT PRINS INSURANCE BY CALLING 1-800-831-8545 OR EMAILING BRUCE MOSIER AT BMOSIER@PRINSINS.COM

# LIGHTNING SAFETY AWARENESS: WHEN THUNDER ROARS, GO INDOORS!

*A program of the Energy Education Council*



(SPRINGFIELD, Ill.)—With record numbers of tornados and severe storms thus far in 2011, deaths and injuries from lightning strikes have also been on the rise. Safe Electricity urges everyone: when thunder roars, go indoors, and to learn from the experience of others.

Officer Jefferson “Jeff” Taylor was injured by a lightning strike on May 23<sup>rd</sup> of this year while helping in the aftermath of the EF5 tornado that hit Joplin Missouri. He along with 12 other employees of the City of Riverside Missouri volunteered to assist in the clean-up efforts in the storm stricken city. Officer Taylor underwent successful skin graft surgery, but succumbed to other complications of the strike and died June 3<sup>rd</sup> with his family by his side.

Earlier this month, 77 U.S. Air Force cadets were sent to Mississippi hospitals after lightning struck a utility pole near their tents at the Camp Shelby Joint Forces Training Center near Hattiesburg. Two of the 77 who were closest to the strike were transported by ambulance and the others by bus to medical facilities. Fortunately, no one was seriously injured in the strike.

Summer is the peak season for lightning strikes, and Safe Electricity joins the National Weather Service in urging everyone to observe Lightning Awareness Week June 19-25. The goal is to increase awareness about the tragic loss of life and debilitating injuries that result from being struck by lightning and how to stay safe from lightning.



The National Weather Service says lightning fatalities average 58 per year, with permanent injuries to hundreds of others. More than 300 people were injured by lightning in 2008 alone. With an estimated 25 million lightning flashes annually in the US, a great potential exists for casualties. Protect yourself and your family from lightning with a safe storm strategy:

- Be aware of weather forecasts and watch for developing thunderstorms, which occur in greater frequency in spring and summer. As the air is heated by the sun, energy is created with air movement, and lightning typically comes from towering storm clouds. But as the Utah teens found out, that is not always the case.
- Lightning can strike many miles ahead of a storm front. If you hear thunder, seek shelter immediately, because that indicates lightning is within 10 miles of you. If you are outside, go inside a building. If you are at a park, do not seek shelter at an open pavilion. A building is safest.

- Lightning will typically seek something tall, such as a tree, building, or flagpole, but can also strike at lower objects. That was the case at Kenosha, Wisconsin in March of 2011, when 7 deer were grazing in an open field and were killed by a lightning strike. There have been reports of livestock huddling under a tree during a storm and being fatally injured when lightning hit the tree. Do not seek shelter under trees, and if you detect a tingling sensation, crouch to a low position with your head between your knees to reduce your height.
- If you are inside a building, the National Weather Service advises you to stay off corded telephones, or away from any electrical device that could carry an electrical surge if lightning were carried into your home through wiring. Turn off or unplug such appliances, stay away from television sets, and do not depend on surge protectors to absorb a lightning strike. Conductors can also include the plumbing in your house.
- Since water is an excellent conductor of electricity, lightning is particularly dangerous for anyone in a swimming pool or engaged in water recreation. Swimmers, boaters, fishermen, and others on lakes and rivers should seek shelter if storms are threatening and lightning is seen or thunder is heard. Authorities warn against outdoor activity until 30 minutes after the last clap of thunder is heard.

If a person is struck by lightning, call 911 and care for the victim immediately. You are **not** in danger of being electrocuted by the victim. More information on lightning safety can be found at [www.SafeElectricity.org](http://www.SafeElectricity.org) as well as at [www.lightningsafety.noaa.gov](http://www.lightningsafety.noaa.gov).





# 2011 PICNIC & SUMMER MEMBERS MEETING



This year's picnic and member meeting was hosted once again by the Seevers family. Veronica and Jon welcomed the ILICA group on another beautiful day in Cisco Illinois. Stan manned the rolling grill and provided attendees with a delicious selection of brats, butterfly pork chops and chicken breasts grilled to perfection. Veronica went all out to provide delicious side dishes and, to everyone's delight, home made ice cream and ice cream sandwiches, which were such a hit at last year's picnic. *(see page 23 for additional photos)*

Picnic sponsorship was provided by ADS /Hancor and C D Getz Corp. although Corey had to miss the day due to illness. Thankfully, Kevin Phipps was able to attend in his stead and our sincere "Thanks" goes out to them and ADS/Hancor for their generous support of ILICA events.

The private train ride into Monticello was a delight and the volunteers at the Monticello Railway Museum really went over and beyond their duties, welcoming the group with hot coffee, juice and Danish during the trip. Guests were allowed to walk between cars while traveling and the club car was even air conditioned! Bill Dean and David Kennedy got a real treat and were allowed to ride into town in the recently restored steam engine, noting the level of activity required to operate it.

The group was also welcomed by those operating the remote control airplanes just a short distance from the railway museum. They were kind enough to stop and talk to our group, explaining the schedule of competitive events around Illinois and the time and skill involved in operating these high tech model planes.

Everyone retired to the Seevers home for the delicious lunch, scheduled meetings and golf cart agility competition in the back yard. And like many family gatherings, after some time to visit with each other, the food came back out of the refrigerator and those remaining enjoyed supper and the Seevers hospitality before heading home. Thanks to all the Seevers for their hospitality and for another great picnic.

*(above)* Jon sets Stan up with the mandatory blindfold before starting out on the agility course while Miriam ready's herself for a wild ride!

## Success Begins with the right Ground Work.



First Mid-Illinois Bank & Trust offers the right financial tools to get your land development started. Whether you're looking to farm your ground or create a smart business plan for it, First Mid can help. We offer Ag Services, Business Lending, Insurance, and more!

**Let us help with your success... call us today.**

- Ag Services Department 1-888-518-7878
- Business Development Department 1-877-561-7107

**You can also visit us online to learn more. [www.firstmid.com](http://www.firstmid.com)**

With 38 locations across Illinois, there's a First Mid near you!



Member FDIC · Equal Opportunity Lender



# DRAINAGE WORKSHOP AGENDA

AUGUST 2<sup>ND</sup> & 3<sup>RD</sup> - SURVEY & DESIGN

AUGUST 4<sup>TH</sup> - AGPS & RTK MACHINE CONTROL & MAPPING SYSTEM REVIEW



The agenda printed here is still somewhat tentative, therefore sessions may be presented in a different order and the times listed may change slightly as the dates approach. Richard Cooke, University of Illinois Extension, will facilitate all survey and design sessions. However, due to the additional scheduling of the ADCM Drainage Water Management (DWM) Certification workshop in July, the Advanced drainage session has been changed as to not duplicate the ADCM content. Instead of the DWM session by Richard Cooke, the Advanced day will contain 1/2 day presentations by both AGPS and Trimble on their Machine Control and Mapping System software. Mike and Nate Cook will facilitate the AGPS session and Joey and Ron Schlatter will facilitate the Trimble RTK session. This software continues to evolve, so even if you attended last year's presentations on these two programs, you will still gain new insight by participating in this year's workshop.

Please note that laptops will be VERY helpful for the all days of the workshop, but especially during the in-depth drainage guide session. Sessions on each day may include a field segment, so plan to dress accordingly (hat, sunscreen, raingear, etc.). All sessions qualify for CEU's for the ILICA certification program.

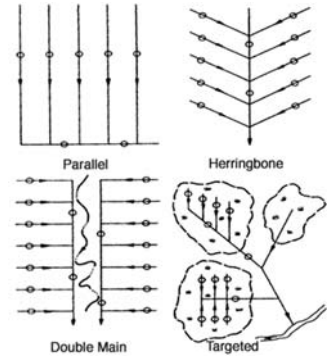
As mentioned above, the advanced drainage session will concentrate on machine control and mapping although Richard will present some information on the DWM structures and bioreactors installed during the 2006 Conservation Expo at Progress City during his survey and design sessions. Research data has been collected from the bioreactors since that time and will also be touched on during his class.

If you have questions about this workshop, please call the ILICA office and keep checking our website, [www.ilica.net](http://www.ilica.net) for more detail as the date gets closer.

August 2nd: 9 am - 5 pm (lunch & breaks included)

August 3rd: 8:30 am - 3 pm (breakfast, lunch & breaks included)

- Understanding Latitude/Longitude
- Introduction to GPS
- Laser Guided Land Leveling
- Field Session - Laser surveying
- Excel Lat/Long Converter
- Field Data Analysis
- Drainage Design
- Drainage Coefficients
- Soil Properties
- In-Depth Illinois Drainage Guide Session
- Resource Mgmt. Mapping Service
- Optional ILICA Certification review & testing (3 pm Thurs)



August 4th - 8:30 am - 4 pm breakfast, lunch & breaks included)

- Machine Control & Mapping System Review

## Great Lakes Inter Drain

2951 East State Street • Fremont, OH 43420

Your U.S. Distributor for:

**Inter-Drain Trenchers and Plows**

New and Used Equipment

**Advanced Geo-Positioning Solutions (GPS)**

for Survey and Total Machine Control

**AFT Add on Trenchers • Laser Systems**

**Weichmann Chain, Cutters etc.**

*"We have the field experience you can depend on after the sale."*



For more information call:



(800) 767-1904 or (419) 332-1904

Fax: (419) 332-2344

Visit us on the web at: [www.greatlakesinter-drain.com](http://www.greatlakesinter-drain.com)

or email: [sales@greatlakesinter-drain.com](mailto:sales@greatlakesinter-drain.com)

# DRAINAGE WORKSHOP REGISTRATION



UNIVERSITY OF ILLINOIS  
EXTENSION

**Richland Community College - Shilling Center - Salon II**  
**One College Park, Decatur, IL**



**Aug. 2 - 3: Drainage Survey & Design**

**Aug. 4: AGPS & RTK Machine Control & Mapping System Software**

<b>Pre-Registration Workshop Fees - ILICA Members</b>		
	<i>1st Attendee</i>	<i>Additional</i>
Full Registration for all Sessions:	<b>\$175</b>	<b>\$150</b>
Session Pricing		
Survey & Design Registration	\$110	\$100
Machine Control & Mapping	\$ 65	\$ 50

<b>Pre-Registration Workshop Fees - Non-ILICA Members</b>		
	<i>1st Attendee</i>	<i>Additional</i>
Full Registration for all Sessions:	<b>\$230</b>	<b>\$210</b>
Session Pricing		
Survey & Design Registration	\$155	\$145
Machine Control & Mapping	\$ 75	\$ 65

<b>After July 17, 2011 or On-Site Registration</b>		
	<i>1st Attendee</i>	<i>Additional</i>
Registration for all Sessions:	<b>\$200</b>	<b>\$180</b>
Session Pricing		
Survey & Design Registration	\$150	\$125
Machine Control & Mapping	\$ 80	\$ 70
Optional Certification Review & Testing on Aug. 3rd at 3 pm (2 year certification period)		
	\$100—Initial Certification Per Applicant	
	\$50—Bi-Annual Renewal Per Applicant	

<b>After July 17, 2011 or On-Site Registration</b>		
	<i>1st Attendee</i>	<i>Additional</i>
Registration for all Sessions:	<b>\$265</b>	<b>\$240</b>
Session Pricing		
Survey & Design Registration	\$200	\$180
Machine Control & Mapping	\$100	\$ 90
Optional Certification Review & Testing on Aug. 3rd at 3 pm (2 year certification period)		
	\$500—Initial Certification Per Applicant	
	\$200—Bi-Annual Renewal Per Applicant	

**Yes, I will attend the following August Workshop and/or Certification Review and Testing program.**

- |   |  |
|---|--|
| <input type="checkbox"/> <b>Survey &amp; Design Drainage</b> (2 days) | <input type="checkbox"/> <b>ILICA Certification</b> (see schedule above) |
| <input type="checkbox"/> <b>Advanced Drainage</b> (1 day)             |  |

Name: \_\_\_\_\_ Area #: \_\_\_\_\_

Address: \_\_\_\_\_ City, State \_\_\_\_\_

Company Name: \_\_\_\_\_ Phone # \_\_\_\_\_

Additional Attendees \_\_\_\_\_, \_\_\_\_\_, \_\_\_\_\_

**Pre-Registration fees must be received in our office by deadlines stated above.**

**Mail to: ILICA - P.O. Box 474 - Brimfield, IL 61517 or Fax: (309) 446-3744      Total Enclosed: \$\_\_\_\_\_**

Although there is no formal room block for the workshop, the following is a partial list of local hotels with their standard rates:

Sleep Inn - 217-872-7700 3920 E. Hospitality Lane Decatur, IL - \$84.99	Fairfield Inn - 217-875-3337 1417 Hickory Point Dr. Forsyth, IL - \$109.99	Comfort Inn - 217-875-1166 134 Barnett Forsyth, IL - \$79.00	Hampton Inn - 217-877-5577 1429 Hickory Point Dr. Forsyth, IL - \$129.00
---	--	--	--



## LEGISLATIVE UPDATE: PREVAILING WAGE ACT



The ILICA legislative committee continues to work with the Association of Illinois Soil and Water Conservation Districts (AISWCD) on developing the language and background documentation to support an amendment to the Illinois Department of Labor (IDOL) Prevailing Wage Act (PWA). This amendment would ask for an exemption on ag related conservation work done with state cost share dollars. An exemption for all agricultural projects as well as a dollar limit exemption have been discussed.

Rich Nichols, Executive Director of the AISWCD found out in June that the Lt. Governor's office is contemplating pushing for an amendment to the PWA that would exempt the cost share program. It wasn't possible to get something formulated before the fall session so it will be January before any changes can be introduced. Rich suggests using the time we have until then to put an argument together and get an amendment drafted.

Rich is asking for our help in documenting the impact this act is having or could have on the industry. Any evidence our contractors can provide to help the AISWCD make a case against the PWA would be very helpful and very much appreciated. **Please contact Janet at the ILICA office if you can provide any documentation on jobs that were lost or contracts that were cancelled because of the inflated costs associated with compliance to this act.**

Tom Beyers also notified the ILICA office that the Association and the Districts are beginning to see the impact of the Act, which are not good. Some members of the ILICA legislative committee plan to attend the state SWCD Convention on Monday, July 25th where an Illinois Dept. of Labor (IDOL) representative will present an informational session on the topic at 3:45 pm. For now all contractors are all subject to the act and all of its requirements.

## CONTRACTORS ENCOURAGE FUNDING USDA WATERSHED PROJECTS

*John Peterson, LICA Director of  
Government Relations*

The Land Improvement Contractors of America (LICA) is urging its members and voters throughout the nation to be vocal in telling Congress to make funding the critically needed federally-assisted U.S. Department of Agriculture small watershed projects a national priority.

"We have observed disastrous flooding once again on the Mississippi River, and are now seeing it along the Red River of the North," said Dirk Riniker, LICA Chairman of the Board and owner of Ebert Construction Company of Wamego, KS. "And while we all realize the need to get federal spending under control, it's time we got serious about spending on those things that are needed here at home and spend less overseas. The USDA Watershed Program is one of those rare federal programs that have provided more in benefits than it costs. It makes no sense to suggest cutting things that actually work." Ebert Construction has built over 150 upstream watershed dams over the years, and Riniker has seen the flood damage reduction they provide. Where watershed projects have been installed as planned far less federal disaster assistance is needed during floods.

The USDA-Small Watershed Program has been designated as a national historic landmark in agricultural engineering by the American Society of Agricultural and Biological Engineers (ASABE). The program established the principle

of combining conservation practices in a watershed with flood control dams on tributary streams. In order to implement the program, innovations in engineering, hydraulics, hydrology, and soil mechanics were developed by USDA's Natural Resource Conservation Service (NRCS) and Agricultural Research Service (ARS) engineers and scientists.

The program was created by the Flood Control Acts of 1936 and 1944 and expanded nationwide by the Watershed Protection and Flood Prevention Act of 1954. The projects are planned and implemented by local units of government, such as conservation districts, with financial and technical assistance from the NRCS.

Since 1948, over 11,000 flood control dams and associated conservation practices in more than 2,000 watershed projects encompassing 160 million acres in 47 states have been constructed as a part of the USDA Small Watershed Program. These projects have improved the quality of life and the environment in rural communities by protecting people's lives and property, conserving soil and water resources, reducing flooding, providing economic development, recreation, and water supplies, enhancing water quality, and improving wetlands and wildlife habitat. LICA contractors have built many of these projects.





# ADMC DRAINAGE WATER MANAGEMENT SYSTEMS TRAINING & TSP CERTIFICATION

For those who did not get signed up for the DWM Systems training and TSP Certification training in Minnesota this month, there is already talk of scheduling a second training in Illinois this winter. The ADMC is looking for input on a good time to schedule this so please let Janet or Jeanne Hanson (507) 451-0073, know what would work for you. Originally, August was discussed for a second training session, but there just wasn't enough time to get instructors secured.

The agenda for the July session is listed here and additional details can be found on our website, [www.illica.net](http://www.illica.net) or at the ADMC website, [www.admcoalition.com](http://www.admcoalition.com). This outstanding training is supported by the NRCS with cost share funding available for both planning and installation of DWM systems. And remember, ILICA/ADMC members will receive a 50% discount on registration fees for the class.



## Drainage Water Management Systems Training

- ◆ Intro to Drainage Water Management (DWM)
- ◆ Soils for Drainage and DWM
- ◆ Economic Considerations
- ◆ DWM Design
- ◆ Management of System

## Technical Service Provider (TSP) Certification

### Orientation and Standards

- ◆ Intro to USDA/NRCS TechReg Website
- ◆ Registration and Certification Process
- ◆ TSP Roles and Responsibilities
- ◆ Technical Reference and tools
- ◆ Electronic Field Office Technical Guide (FOTG)
- ◆ National Planning Procedures Handbook



Since 1923 supplying quality drainage products with service second to no one...

## Why Fratco Pipe and Fittings?

**Quality and Service.** We are 100% committed to offering the best HDPE corrugated pipe and fittings to the market, with a friendly and knowledgeable staff that is dedicated to providing unparalleled flexibility and delivery, ensuring prompt and accurate order filling from our fully stocked yards.



## Experience the Fratco Difference....



ST. ANNE OFFICE  
460 SOUTH ELM ST.  
ST. ANNE, IL  
60964  
(815) 427-8144



[www.fratco.com](http://www.fratco.com)  
or Toll Free  
(800) 854-7120  
(800) 475-8144



FRANCESVILLE OFFICE  
4331 SOUTH 1450 WEST  
FRANCESVILLE, IN  
47946  
(219) 567-9133

Members of:



## 2011 Committees

### Associate

Corey Getz - ADS / Hancor, Chair  
 Mark Baker - Springfield Plastics  
 Mike Bierbaum - CPI Supply  
 Dave Mosier - ADS / Hancor  
 Chad Nicholson - Fratco, Inc.  
 John Pogge - Prinsco, Inc.

### Auditing

Bill Dean, Chair  
 Steve Anderson  
 Ron Masching

### Awards

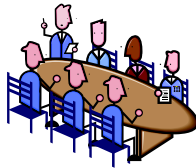
Bill & Bev Dean, Chair  
 Brent & Tracy Breedlove  
 Bill & Janet Doubet

### Budget

David Haag, Chair  
 Dan Day  
 Bill Dean

### By-Laws

Stuart Anderson, Chair  
 Bill Doubet  
 Dave Hurst  
 Stan SeEVERS  
 Joe Streitmatter



### Certification

Dave Hurst, Chair  
 Wayne Litwiller  
 Ron Masching  
 Prof. Kent Mitchell, U of I  
 Stan SeEVERS

### Certification Board

Dave Hurst, Chair  
 Forrest Davis  
 Dave Kennedy  
 Wayne Litwiller  
 Ron Masching

### Convention

Kristin Kutemeier, Chair  
 Brent & Tracy Breedlove  
 Bill & Bev Dean  
 Greg & Jennifer Furkin  
 David & Lori Kennedy  
 Mike & Holly Yordy

### Devotions

Jean Davis, Chair  
 Steve Anderson  
 Norm & Coretha Rozendaal

### Education

Brent Breedlove, Chair  
 Prof. Richard Cooke—U of I

### Education (cont.)

J.D. Laster  
 Eric Layden  
 Mike Yordy

### Executive Committee

David Kennedy, Chair  
 Steve Anderson  
 Bill Dean  
 Janet Burtle-Doubet  
 David Haag

### Golf Outing

Wayne Litwiller, Chair  
 Jerry Biuso  
 Forrest Davis

### Headquarters

Dan Day, Chair  
 Steve Anderson  
 Mark Baker  
 David Haag  
 Ron Masching

### Industrial & Business Relations

Bill Doubet, Chair  
 Charlie Adams  
 Dan Day  
 Bill Dean  
 Wayne Litwiller

### Insurance

Vacant, Chair  
 Charlie Adams  
 Dan Day  
 Stan SeEVERS

### Ladies

Lori Kennedy, Chair  
 Judy Beyers  
 Bev Dean  
 Cathy Masching  
 Jackie Streitmatter

### Legislative

Steve Anderson, Chair  
 Lee Bunting  
 Bill Doubet  
 Dave Hurst  
 Carol Kiley  
 Norm Kocher  
 Joe Streitmatter  
 Mike Yordy

### Long Term Planning

Steve Anderson, Chair  
 Stuart Anderson  
 Dan Day



### Long Term Planning (cont.)

Bill Doubet  
 Ron Masching

### Membership

Wayne Litwiller, Co-Chair  
 Norm Kocher, Co-Chair  
 Steve Anderson  
 Mark Baker  
 Tom Beyers  
 Brent Breedlove  
 Brian Brooks  
 Forrest Davis  
 Dan Day  
 Scott Day  
 Bill Dean  
 Bill Doubet  
 Eugene Glueck  
 Ron Masching  
 Larry Rhodenbaugh

### Nomination

Stan SeEVERS, Chair  
 Dan Day  
 Joe Streitmatter

### On-Site Waste

Wayne Litwiller, Chair  
 John McCoy  
 Larry Rhodenbaugh  
 Jon SeEVERS  
 Jason Winings

### Picnic

Steve Anderson

### Publicity

Bill Doubet, Chair  
 Mark Baker  
 Wayne Litwiller

### Safety

Doug Nicholson, Chair  
 Brent Breedlove  
 Dave Hurst  
 Dave Kennedy  
 Carol Kiley  
 John McCoy  
 Jason Winings

### Show & Other Income

Dave Kennedy, Co-Chair  
 Jon SeEVERS, Co-Chair  
 Brent Breedlove  
 Brian Brooks  
 Joe Krupps  
 Wayne Litwiller  
 John McCoy  
 Joe Streitmatter





## MEMBERSHIP APPLICATION

### Illinois Land Improvement Contractors Association, Inc.

118 E. Knoxville · PO Box 474 · Brimfield, IL 61517  
 (309) 446-3700 · Fax: (309) 446-3744 · Email: janet@illica.net

\_\_\_\_\_ hereby makes application for Active Membership in the **ILLINOIS LAND IMPROVEMENT CONTRACTORS ASSOCIATION, INC.**, (ILICA) and enclose \$\_\_\_\_\_ as my annual membership dues for the year \_\_\_\_\_. One dollar (\$1.00), which is included in the \$295 dues, is for a one (1) year subscription to the “ILICA News”, a bi-monthly newsletter.

Send completed application with payment (make check payable to ILICA) to the corporate address above or give to any ILICA member to forward.

Name: \_\_\_\_\_ DOB:(*required for active members only*)\_\_\_\_\_

Firm Name: \_\_\_\_\_

Spouse: \_\_\_\_\_ County: \_\_\_\_\_

Address: \_\_\_\_\_

City: \_\_\_\_\_ State: \_\_\_\_\_ Zip: \_\_\_\_\_

Email : \_\_\_\_\_ Sponsor: \_\_\_\_\_

Phone: \_\_\_\_\_ Cell Phone: \_\_\_\_\_ Fax: \_\_\_\_\_

#### Check All Services Provided

- |                                 |   |
|---------------------------------|---|
| CUI - Cable/Utility Inst.       | OSW—On Site Waste Treatment   |
| DB - Directional Boring         | PD - Ponds / Dams   |
| DI - Drainage/Irrigation        | RBD - Road Boring/Drainage  |
| DWM - Drainage Water Mgmt       | R - Reclamation   |
| EC - Erosion Control            | SA - Dealer/Service Co./Government Agency/<br>Consultant/Insurance Agency |
| EMC - Earthmoving/Land Clearing | SP - Site Prep  |
| EXG - Excavating/Grading        | SWU - Sewer/Water/Underground Utilities                                   |
| GR - Gravel/ Rock Production    | TH - Trucking / Hauling   |
| LL - Land Leveling              | TW - Terraces / Waterways   |
| LS - Landscaping                | WM - Water Management   |
| ODW - Open Ditch Leveling       | Other: _____  |

**Active Contractor Membership - \$295** (*One hundred seventy dollars (\$170) for Illinois Membership plus One hundred twenty five dollars (\$125) for National Membership*)

(Active members are individuals engaged in the business of entering into contracts for performing work that will result in soil, land, natural resource conservation or rehabilitation, water conservation, control and prevention of soil erosion, depletion and misuse of natural resources and soil and water pollution and contamination.)

**Associate Membership - \$295** (Associate members are those businesses that manufacture or sell equipment, materials or services used by active members)

**Affiliate Membership - \$85** (Affiliate members are individuals employed by an active member in the business that makes the active member eligible for membership)



## ILLINOIS LICA BENEFITS



### Education

Illinois LICA provides many educational opportunities throughout the year with sessions at our annual convention, at Area member meetings and at workshops each year. Almost every Area is hosting meetings this year.

Illinois LICA state convention, which includes exhibits by our associate members, is scheduled each January in various locations around the state. First year contractor members will receive 1 free full participation registration to the convention, which includes all meals during the 3 day event. Several educational sessions are scheduled during the convention along with many social and networking opportunities.



Workshops are offered multiple times per year. In 2011 there were three scheduled; A 4 day safety workshop in February, the University of Illinois Erosion Control workshop in March and a drainage and drainage water management workshop set for August. OSHA 10 Hour certification will be offered every other year and Certified Flagger training is available as often as demand warrants.



### Continental Western Group/LICA Insurance Program

Continental Western Group has designed a comprehensive LICA Insurance program, blending Property, Inland Marine, Crime, General Liability & Business Auto coverage into a simple and convenient policy. It offers standard coverage for many items specific to the Land Improvement industry, providing outstanding coverage at a very competitive rate, even before the Safety Group Dividend potential return. Although the dividend is not guaranteed, the return rate has been between 3.5% and 12% most years.



### ILICA News & Annual Directory

The ILICA News is a bi-monthly publication distributed to all Illinois LICA members that contains 24 pages of information relative to the land improvement industry as well as notice of activities and upcoming events. The annual directory of members is published each spring and distributed to all ILICA members and many IEPA, NRCS and SWCD offices throughout Illinois.



### Legislative Representation

ILICA has an active Legislative Committee that monitors legislation that impacts small business in Illinois. They participate in the Agricultural Legislative Roundtable caucus and many other events then disseminate that information to ILICA members. They are currently working on a system to streamline this process for more effective communication.

ILICA not only maintains its own relationship with legislative contacts, Illinois along with other state chapters have a combined voice in Washington DC through national LICA. Each year, representation from ILICA travels to Washington DC along with several other chapters, to lobby their congressmen and women regarding legislation that affects land improvement contractors.



### National Benefits

A LICA membership entitles contractors to many benefits that can give their company a competitive edge. Listed below are just a few:

- National LICA Contractor Magazine
- LICA Contractor Safety Management Plan
- National Equipment Register
- Beyond Perks Program
- Petrocon Commodities Discount Program
- National LICA Winter Convention and Summer Meeting
- National Scholarship Program
- Land & Water Magazine
- LICA Sponsored Limited Medical Program

## CALENDAR OF EVENTS

### Illinois

#### Drainage Workshops

**Survey & Design - Richland College - Decatur, IL**

August 2 - 3, 2011

**Machine Control and Mapping System Software**

August 4, 2011

#### Case Triple Threat Backhoe Rodeo

**Birkey's - Bloomington, IL**

ILICA Membership Committee lunch stand

August 13, 2011

#### Illinois Farm Progress Show

**Partners In Conservation Tent**

**Progress City USA - Decatur, IL**

August 30 - September 1, 2011

#### 3rd Annual Area 3 Golf Outing

**Coyote Creek Golf Course - Bartonville, IL**

September 8, 2011 - 1 pm Shotgun Start

### National

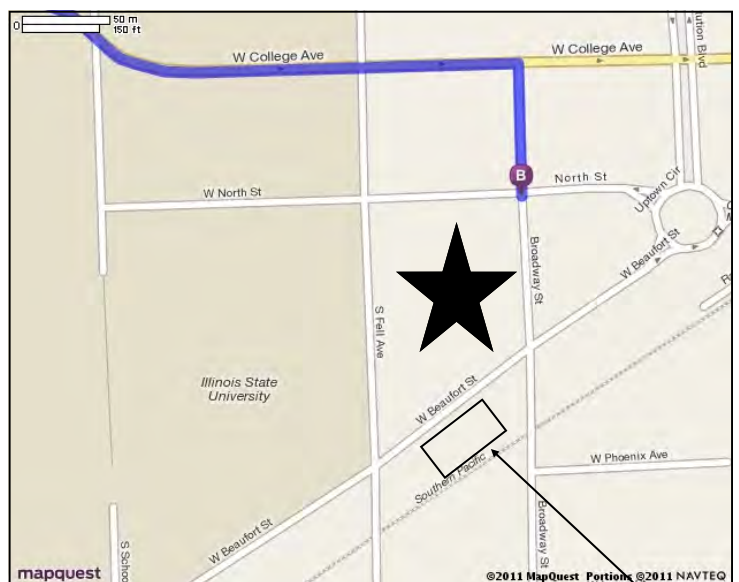
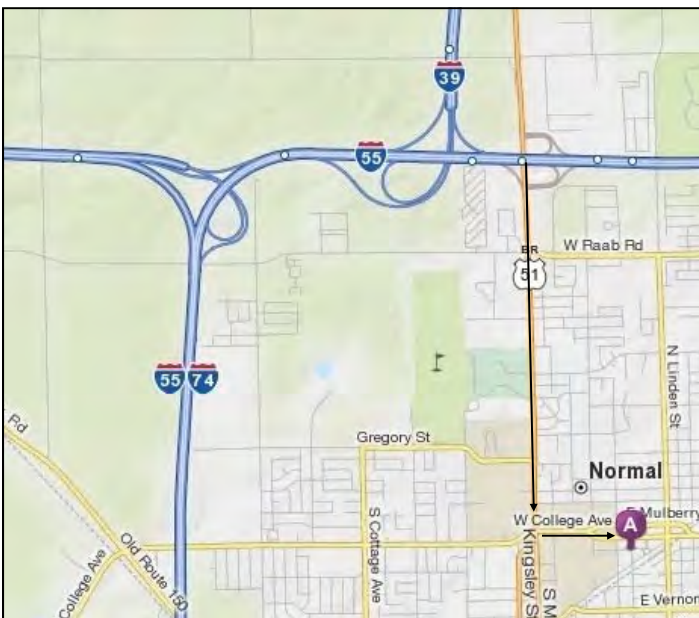
**ADMC Certified Drainage Water Management Training**

**Kahler Grand Hotel - Rochester, Minnesota**

July 14 - 15, 2011

## ADVERTISERS INDEX

Agri Drain Corp .....	4
Central Illinois Ag .....	2
Continental Western Group/Heiser Ins. ....	5
First Mid-Illinois Bank & Trust. ....	11
Fratco, Inc. ....	15
Great Lakes InterDrain. ....	12
Martin Equipment of Illinois .....	24
Midwest Auger Aerator. ....	24
Precision Intakes LLC .....	24
Prins Insurance Inc. ....	9
Prinsco .....	7
Roland Machinery Co .....	2
RWF Bron .....	23
Springfield Plastics Inc. ....	24
Stadel Electronics .....	4



From I-55: Take the US-51-BR exit, Exit 165 toward Bloomington-Normal. Turn left onto US-51-BR/N Main St and follow for approximately 2 miles. Turn left onto W. College Ave and follow for 1/2 mile. Turn right onto Broadway St. and the Marriott is at 201 Broadway, on the right, noted by the "star". There is a parking ramp with a walkway over Beaufort St., shown here.





UNIVERSITY OF ILLINOIS  
EXTENSION

## LAWN CARE FOR THE SUMMER

Source: Richard Hentschel, Extension Specialist, Green Industry Programming, [hentsche@illinois.edu](mailto:hentsche@illinois.edu)



How we manage the lawn during the summer greatly influences how well the lawn will look in the fall and even the following spring, said a University of Illinois Extension horticulture specialist.

"Lawns in northern Illinois are most likely a Kentucky bluegrass blend," said Richard Hentschel. "While those warm-season grasses thrive in the heat of the summer, our bluegrasses will generally go dormant if left alone, but will return again after the heat of the summer turns to the cooler weather of fall."

Bluegrass lawns can be kept growing if you are committed to watering the lawn all summer, he noted. If you expect to water all summer, then a light summer application of lawn food will be needed to supply the lawn with the needed nutrients so that the lawn will continue to grow as you hope it will.

"When you do water, water deeply to encourage deeper roots, and that may mean watering in the morning and in the evening on the day you are allowed to, to put enough water on to soak in 4 to 6 inches. If the summer temperatures exceed the mid-80s for several days, the lawn will temporarily shut down and wait for cooler temperatures before resuming growth and no amount of water will change that."



In order for the lawn to remain competitive against weeds all summer long, Hentschel recommends mowing the lawn higher rather than shorter. Taller lawns will shade the soil, keeping weed seeds from germinating and becoming a problem by fall.

Other benefits of a taller lawn mean a deeper, longer root system that is more likely to recover from stress or a disease outbreak. Deeper roots also mean that the grass plant is better able to obtain nutrients and the needed moisture from the soil between watering.

Other benefits of a taller lawn mean a deeper, longer root system that is more likely to recover from stress or a disease outbreak. Deeper roots also mean that the grass plant is better able to obtain nutrients and the needed moisture from the soil between watering.



"To keep your lawn looking its best, be sure you keep the mower blade sharp," said Hentschel. "Sharpen the blade once a month during the mowing season. If you start with a sharp blade, it does not take that much time to keep it sharp all summer."

If you allow the lawn to go dormant, then you will not need a summer application of an organic lawn food. Any organic products used will still be available later when growth resumes. Gardeners will need to apply enough water if inadequate rain is received to keep the crown of the grass plant alive and bring the lawn back in the fall when the weather moderates.

The lawn should receive between  $\frac{1}{4}$  and  $\frac{1}{2}$  inch of moisture per month. This is not enough to bring the lawn out of dormancy but is enough to keep the crowns alive. When lawns go dormant, the weeds keep growing and you should expect to see a few come fall, he said.

"Summer is a time to take an inventory of the lawn and decide what may need to be done as the lawn comes out of dormancy," he said. "There may be thin spots that need overseeding and low spots that need topdressing so those areas do not stand water, becoming disease prone."

The lawn may benefit from late-summer core aeration, especially if you have soils that are compacted. Cores should be about 3 to 4 inches apart, he said.



"The cores themselves can be allowed to dry and filter back into the lawn to act as topdressing by either raking them in or breaking them up with the lawn mower the next time you mow," he said. "Core aeration and then topdressing with good organic matter will benefit the grass plant long term, allowing it to perform at its best."







# LATE AGAIN! THIS BETTER BE GOOD!

When it comes to receiving payment for services, this Gary Larson cartoon effectively illustrates issues faced by land improvement contractors. Obviously, there are circumstances where delayed payments are justified. However, in an economy that often sees a declining

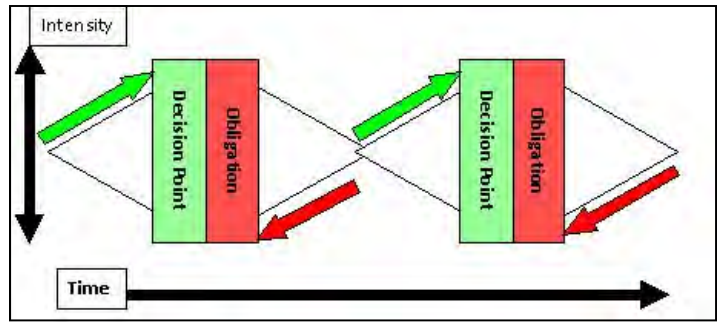
volume of demand paired with delays and even avoidance of payment – efficient cash flow management becomes a critical strategy in business health.

Many excavators know the rock-and-a-hard-place feeling of not wanting to alienate customers with payment demands, but feeling their own pressures in meeting payroll, equipment payments, loan obligations etc. Eventually, something has to give - the debt is written off, liens are filed and/or the debtor is sometimes referred to a high back end cost collection service where chunks from 33-50% are stripped from monies collected.



It is not just getting paid for the job that's on the line, significant costs are associated with the length of time in getting paid. The U.S. Department of Commerce chart below shows the depreciation of money from time of service to time of collection. Monies collected at 90 days retain 83% of their value; however, monies collected at one year lose 55% of their value!

The impact of an uncollected debt as a ripple effect far beyond what most businesses realize. Assuming a target profit margin of 10%, \$10,000 in unpaid debt actually equals a \$200,000 impact on the business. Let's examine why this is the case. Just to break even on that \$10,000 debt, and excavator

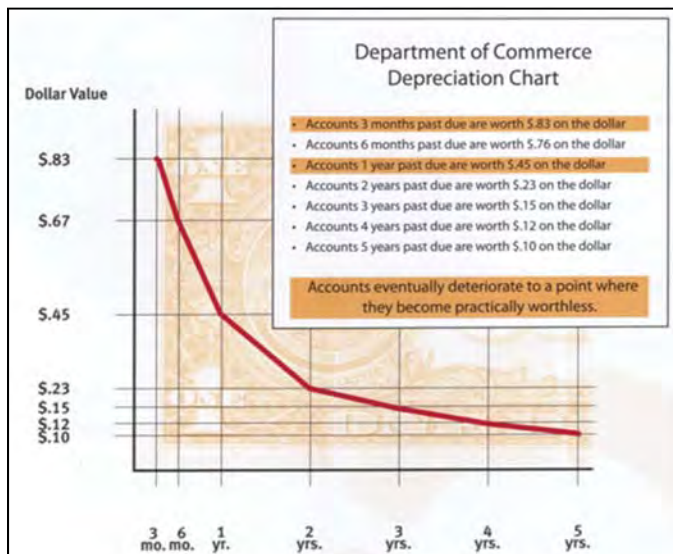


would have to make another \$100,000 just to make up for the \$10,000 loss. As most excavators are not in the business just to break even, they would have to make another \$100,000 just to get back to their target of a 10% profit.

Clearly then, the more effective a business is in securing payment near the time of service, the greater the value of their money and the better positioned it is to leverage capital.

Lastly, in understanding the impact of time on payment is the role of basic debtor psychology: When a customer makes a purchase decision, the sense of obligation to pay for that purchase is highest. But as time passes, the pairing of decision and obligation begins to decline; and the highest sense of obligation is transferred to the next purchase decision. The farther the first creditor is from payment, the greater the probability he will find it difficult to get paid and will experience high internal costs trying to collect coupled with the ticking time bomb of depreciation of money value.

Source: Doug Rasmussen, TekCollect. (Email: douglas.rasmussen@tekcollect.com)



## CASE TRIPLE THREAT RODEO COMPETITION ANNOUNCED



Birkey's will be hosting an event on **Aug. 13, 2011** at their Bloomington, IL facility! The Illinois LICA membership committee has agreed to provide the cookout lunch for the Birkey's staff, the operators, and their guests.

The operators who win rodeo events at Case dealerships across North America will compete in a final event during the 2012 World of Concrete tradeshow to determine the champion.

**Grand Prize Winner to Receive a New Case Compact Track Loader and Ram Truck!**



# 2011 PICNIC & SUMMER MEMBERS MEETING (CONT.)



(Above, l to r) – Joe, David and Bill through the Monticello depot window; Joe & Jackie get ready to try the blind-fold agility course with Jon keeping score; The Millers from Iowa enjoying the newly restored steam engine as we head to town; Jon dragging the Yordy's out of the pine trees after a miscommunication on directions; one of the remote control airplanes landing during our visit; one of many static train cars at the Monticello Railway Museum.



**THE  
NEXT  
GENERATION** Is Now Here.



## The New BRON Drainage Plow

Introducing the totally redesigned BRON self-propelled drainage plow. From the ground up, new features give you better control, better productivity and better comfort.

- **Balanced Weight Distribution**
- **Improved Operator Visibility**
- **Electronic Digital Controls**
- **Ergonomic Cab Comfort**
- **FOPS/ROPS Certified**
- **Tri-Core Cooling System**

**BRON**  
POWER TO PERFORM



[rwfbron.com](http://rwfbron.com)  
1.800.263.1060





Your Supplier for Quality Drainage Products  
 Fast Deliveries & Knowledgeable Staff  
 Complete Line of **HEAVIEST FITTINGS**  
 on the Market



*Quality You Can Count On,  
 The Treatment You Deserve*

800-252-3361 [www.spipipe.com](http://www.spipipe.com)

ILICA Supporter for 32 Years



**"LIFE'S SHORT—DIG FAST!"**

### BUCKEYE 7200 MAGNUM



- STATE-OF-THE ART DESIGN
- HIGHER PRODUCTION
- BETTER BUILT

### MIDWEST AUGER-AERATOR

AUGER BACKFILLERS / WHEEL TRENCHERS  
 AUTHORIZED DEALER — BUCKEYE / SPEICHER  
 1-800-232-7008



## Precision Intakes

### Full Line of Surface Water Intakes

- 8" & 10" riser with patented 8" & 10" combination Tees.
- Also 6" square & round risers with patented reducing Tee.
- Constructed of heavy-weight, high-density polyethylene.
- Parts highly adjustable & interchangeable with others on the market.
- Orifice plate placed at tee level or at ground level.
- Exclusive locking device on each part.
- User Friendly—Priced effectively.
- Adaptor available to repair old metal or broken intakes.



*Why inventory 2, when 1 serves both!*



"Dealer Inquires Welcome"

## ~~PRECISION INTAKES~~

Norm & Coretha Rozendaal  
 2064 Republic Ave West  
 Monroe, IA 50170

(800) 932-7611  
 (641) 259-2651  
 (641) 259-3218 Fax