



ILICA

NEWS

Land Improvement Contractors Of America · Illinois Chapter

May - June 2016

David Haag
Past President

Tom Beyers
President

Lee Bunting
Vice President

Grant Curtis
First Vice President

Ryan Arch
Executive Secretary

Bill Dean
Treasurer

Area Directors

Area 1

Brian Brooks

Area 2

Steve Anderson
Stuart Anderson

Area 3

Joe Streitmatter
Mike Yordy

Area 4

David Kennedy
John McCoy

Area 6

Jon SeEVERS

Area 8

Norm Kocher
Brad Baker
Associate Director

Ryan Arch
Executive Director

5TH ANNUAL AREA 6 GOLF OUTING

(page 9)



LET'S HOPE FOR THIS ... NOT THIS!



BIRKEY'S BACKHOE RODEO, SUMMER PICNIC, MEMBER MEETING

(page 17)

Also Featured Inside:

By-Laws Changes To Be Voted On At Summer Picnic *(page 6)*

Extension Connection: LiDAR and the Design of Drainage Systems *(page 12-14)*

ILICA Summer Building Projects *(page 14)*

Upcoming Events:

May Board Meeting

Richland College NSEC Building
May 14, 2016 - 2 PM

Area 6 Golf Outing

Meadowview G.C. - Mattoon, IL
June 24, 2016 - 1 pm Shotgun start

Illinois LICA
P.O. Box 474
Brimfield, IL 61517

Self-Propelled Brown Bear Auger Backfillers



4 Sizes To Choose From

- **Model 200C**
@ 150hp Tier III Cummins
- **Model 300C**
@ 190hp Tier III Cummins
- **Model 400C**
@ 250hp Tier III CAT
- **Model 500C**
@ 350hp Tier III CAT

- ~ 10' to 14' Wide Auger Head Sizes ~ All-Wheel Drive and Selectable All-Wheel Steer
- ~ Multiple tire size and style's to match your needs

Contact: sales@brownbearcorp.com
or visit: www.brownbearcorp.com

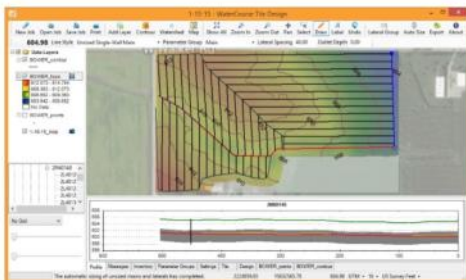


New in 2015!
AMW
WaterCourse
Tile Design

Mike Cook's Soil & Water Mgmt Systems

Your Source For:

- Instant visual aids:
Contour, Color, Aerial Map
- Quickly draw mains & laterals
- See a real time buried profile
- Click & drag to adjust
- Autosize tile
- Get a tile cost report
- Export to grade control
- Continued AGPS Support
- AMW Machine Control Products
- NovAtel GPS
- GPS controlled drain tile installation and land shaping
- Tile and connection location guidance
- IDigBest Excavator controls & More!



Now
partnered
with
JCG Midwest
to offer
local sales,
parts and
service!

Contact Mike or Nate: Phone: 989-587-3528 or 989-640-2347
Email: mike@cookswms.com or nate@cookswms.com

JCG MIDWEST DRAINAGE PRODUCTS

****A ONE-STOP-SHOP FOR ALL YOUR DRAINAGE NEEDS!****

Located directly off of US Rt. 51 at:

2700 North Main St. - Moweaqua, IL 62550

(217) 768-3040

Email: JCGMidwest1@gmail.com Website: WWW.JCGMIDWEST.COM



- | PIPE: | ACCESSORIES: | EQUIPMENT: |
|---|---|--|
| <ul style="list-style-type: none"> • MAXI COILS • DUAL WALL • SINGLE WALL • FITTINGS • PVC • CORRUGATED METAL | <ul style="list-style-type: none"> • RISERS • FABRIC • SHOVELS • PROBES • TILE CUTTERS • WATER CONTROL STRUCTURES | <ul style="list-style-type: none"> • TRENCHER PARTS <ul style="list-style-type: none"> ◦ CHAINS, ROLLERS, CUTTERS, TEETH, SPROCKETS, CONVEYOR BELTS AND MORE • TILE CARTS • MAXI SPOOLS |



LET US HELP YOU SAVE TIME BY USING OUR DELIVERY SERVICE!

* ILICA SUPPORTER *

The ILICA News



Editor / Advertising Manager
Janet Burtle-Doubet

Past President
David Haag, Kempton

President
Tom Beyers, Odin

Vice President
Lee Bunting, Dwight

1st Vice President
Grant Curtis, Sciota

Executive Secretary
Ryan Arch, Galva

Treasurer
Bill Dean, Mattoon

Educational Advisor
Professor Richard Cooke
University of Illinois

The *ILICA News* is the official publication of Illinois Land Improvement Contractors Association, Inc. at 118 E. Knoxville St., Brimfield, IL 61517. (309) 446-3700.

Subscription price is \$50.00 per year, issued bi-monthly: Jan.-Feb.; Mar.-Apr.; May-June; July-Aug. Sept.-Oct.; Nov.-Dec., and also includes one annual directory.

FEATURES

By-Laws Changes To Be Voted On At Summer Picnic 6

5th Annual Area 6 Golf Outing Registration & Sponsor Form 9

ILICA Summer Building Projects 14

LICA FY17 Conservation Coalition Letter 16

2016 ILICA Annual Picnic & Member Meeting Registration 17

OSHA And The Competent Person 21-22

2016 National LICA Summer Meeting Highlights 22

COLUMNS

Presidents Message 4

New Members 5

2016 Board Member Schedule & Attendance 5

ILICA Ladies Page: 10 Things You Should Do in Your Kitchen Tonight . . . 8

The Extension Connection 12-14

Featured Benefit: ILICA Construction Projects 18

Contractor Classifieds 18

Advertisers Index 19

Board Meeting Notice 19

Calendar of Events 19

Safety Feature: Reduce The Risk of Diesel Exhaust Exposure 20-21

Northland Trenching Equipment, LLC

"We are the largest volume supplier for this type of equipment in the US"



Inter-Drain
Plows & Trenchers

Trimble TRIMBLE GPS SYSTEMS



The Inter-Drain plow, three types, double link, single cantilever, or single link, each in three sizes. Cat, Cummins or Volvo power. Offset available.



The Inter-Drain chain trencher. Four size choices, mechanical or hydraulic chain drive, vertical and offset available. Cummins, Volvo or Cat power.

FULL SERVICE AND REBUILDS

HUGE PARTS INVENTORY

Corporate Office
12929 410th Avenue
Waseca, MN 56093
Phone: (507) 835-4214
Fax: (507) 835-2032

Eastern Division - Indiana
3578 North State Road 59
Brazil, IN 47834
Phone: (812) 835-2900
Fax: (812) 835-2535

Email: nte@hickorytech.net
www.northlandtrenching.com





PRESIDENT'S MESSAGE

Spring is here and another planting season is underway. Weather has been cool until recently and kept some of the corn planters from running, giving some of us a chance to perform some needed field conservation work.

There has been considerable field tile installed during the past few years and many of those installations are visible to the traveling public. Some of this work is replacement of old tile systems that have served their useful life, some is drainage improvement stimulated by the higher commodity prices of recent years. Research has repeatedly indicated that controlling the water level increases chances of increased yields. Many of these installations are performed by individuals who are not ILICA members. We naturally wonder how many of these installations are according to the Illinois Drainage Guide. I have read some farm publication articles about innovative tile installations that have me wondering.

We at ILICA certainly are doing everything in our power to offer training and education for our members and non-members to follow recommended practices concerning drainage. Annually we host an August Drainage Workshop to offer training tailored to assist the novice and the certified professional to learn about Drainage Law, Drainage Management, Edge of Field BMPs, Conservation Drainage and more. We are collaborating with all the Ag organizations and Academia to address the recent concerns about nutrient effluents entering the public water supplies. We are hoping to stimulate voluntary improvements to the quality of runoff water entering public water supplies and avoid overbearing regulation.

On the National Level, Jerry Buiso is working on a new program for septic tank owners. Possible Septic Tank Insurance, whatever Jerry goes after Jerry usually gets, we will see what he finds. Summer National convention is being hosted by Missouri LICA and will be located in Kansas City July 18-23. Just a short drive for us from Illinois, consider joining us for a day or the

complete conference. John Peterson our national lobbyist constantly keeps the Illinois staff informed of recent developments in Washington. I for one especially appreciate John's expertise and efforts on behalf of LICA and would like to express ILICA's appreciation for John's work.

Bill Dean is planning a great Golf Outing June 24th and the Summer Picnic June 25th. Come join in some fun and the summer annual meeting at which we plan to vote on some by-laws changes. All of this information is available in this newsletter and on the ILICA webpage.

Ryan Arch has hit the ground running and has engaged his new assignment with enthusiasm, noting that the organization is far more active than he initially expected. We have met again with Wetlands Initiative to view and research the site of the 2016 constructed wetland. This project is set for the 2nd week of August. We have also met with the Illinois Corn Growers again and are in the process of reviewing proposed research farms for tile installation, possibly this summer. Watch for the scheduling of these projects and consider coming to help. These events help raise funds to sustain our organization and we at ILICA would really like to take this organization to the next level so that we continue to grow and to be considered a valued partner in all of the conservation efforts of Illinois.

Tom Beyers, President

Soil and water are precious resources which must be properly managed and conserved to ensure a healthy balance for agriculture and the environment.

Your Partners in Water Management since 1976!
800-232-4742 | www.agridrain.com
Agri Drain
CORPORATION

The LICA Creed



- Land, the foundation of the Nation
- The basis of all wealth
- The heritage of the wise
- The thrifty and prudent
- The poor man's joy and comfort
- The producer of food, fiber and fuel
- The basis of factories
- The foundation of banks

All that man builds is from the land. We often take it for granted or even abuse it; And yet many, unthinkingly and unknowingly pass the land by. What man does with the land will be the deciding factor of his survival.

NEW MEMBERS Welcome! Active Contractors

Chris Harner
Chris Harner Excavating
 1815 Tunnel Hill Rd.
 Tunnel Hill, IL 62972
 Ph: 618-527-5137
 Email: chdirtman72@yahoo.com

Associate Members

Storm Water Supply LLC - Wes Larson
 12100 210th St.
 Davenport, IA 52806
 Ph: 563-265-8296
 Email: wlarson@stormwatersupply.net

Thank You!

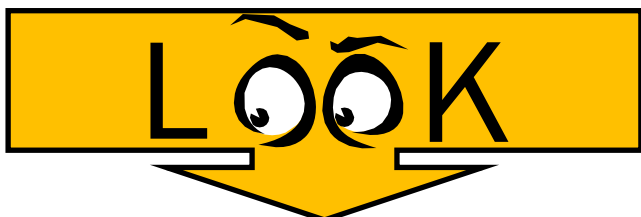
Schlatter's Inc. Intelligent Water Management™



- Wolfe Drainage Plows
- Trimble GPS Machine Control
- RTK Topo Mapping
- Water Management Design Software
- DLog Tile Mapping



www.SchlattersInc.com
 (219) 567-9158 Francesville, IN



2016 Board & Member Meeting Schedule

Unless changed by the board during the year, the ILICA business meetings are scheduled as follows:

May 14, 2016 - Regular Meeting of the Board

June 25, 2016 - Summer Picnic & Member Meeting
 Bill Dean's shed, Mattoon

September 10, 2016 - Regular Meeting of the Board

November 5, 2016 - Regular Meeting of the Board

January 13, 2017 - Winter Convention and Member Meeting, Embassy Suites, East Peoria

Exact location, committee meeting time & other details will be published in the ILICA News and sent to members via mail and/or email.

2016 Board Member Meeting Attendance

	A = absent		P = present		C = cancelled meeting	
Area / Director	Jan	Mar	May	Jun	Sep	Nov
Pres: Tom Beyers	P	P				
VP: Lee Bunting	P	A				
1st VP: Grant Curtis	P	P				
Area 1 - Brian Brooks	P	P				
Area 2 - Steve Anderson	P	P				
Area 2 - Stuart Anderson	P	P				
Area 3 - Mike Yordy	P	A				
Area 3 - Joe Streitmatter	P	P				
Area 4 - David Kennedy	P	P				
Area 4 - John McCoy	P	A				
Area 5 - Vacant						
Area 6 - Jon Seevers	P	P				
Area 7 - Vacant						
Area 8 - Norm Kocher	P	A				
Associate Dir: Brad Baker	P	P				



BY-LAWS CHANGES TO BE VOTED ON AT SUMMER PICNIC



The by-laws committee met at the March 12th 2016 board meeting to discuss the use of electronic media such as conference calls, skype, or similar type connections in lieu of face to face meetings. These would be utilized to help when there is a short planning time, in order to establish a quorum at board meetings, and possibly to save travel time for committee meetings.

While all of us on the by-laws committee still think it is very important that our directors and committee members meet in person whenever possible, we also know that sometimes our work loads do not allow for all the time it takes to drive to a meeting and drive home when the same thing could be done on the phone or via some type of electronic media. In reality, we are not really changing the by-laws, we are just adding language that brings us more current with the times.

The changes are as follows,

Article II, Section 3, paragraph 2, first sentence

Original language:

Notice of an annual or special meeting shall be delivered either in person or by mail, by or at the direction of the secretary.....

Proposed language:

Notice of an annual or special meeting shall be delivered either in person, by mail, or by electronic media, by or at the direction of the secretary.....

Article II, Section 3, Paragraph 2, second sentence

Original

If mailed, such notice shall be deemed to be delivered when deposited in the United states mail.....

Proposed language:

Notice of meetings shall be deemed to be delivered when deposited in United States Mail or sent by electronic media from the ILICA office.....

Article IV, Section 3

Proposed addition: Section 3A

Regular and special meetings of the board and or committees may be conducted in a designated location or via electronic media or a combination of both.

Article IV, Section 4 Middle of paragraph

Original language:

Directors and Alternate Director either personally or by mail, by or at the direction of the Secretary, or upon a default in duty by the Secretary, by the President or members of the board calling the meeting. If mailed, such notice shall be deemed to be delivered when deposited in the United States mail addressed to the board member.....

Proposed language:

Directors and Alternate Director either personally, by mail, or by electronic media, by or at the direction of the Secretary, or upon a default in duty by the Secretary, by the President or members of the board calling the meeting. Notice shall be deemed to be delivered when deposited in the United States mail or sent by electronic media from the ILICA office, addressed to the board member.....

Article V, Section 9 D

Original language:

keeping a register of the names and post office addresses of all members;

Proposed language:

keeping a register of the names, post office addresses and electronic contact information of all members;

Any changes to the by-laws must be voted on at a members meeting so these proposed changes will be addressed following the summer picnic on June 25, 2016 at Dean Drainage LLC in Mattoon Illinois.

This article is to be considered "written or printed notice setting forth the proposed amendment" as is required in the ILICA by-laws.

Sincerely, Stuart L Anderson - By-laws committee Chair

Precision Intakes

Full Line of Surface Water Intakes

- 8" & 10" riser with patented 8" & 10" combination Tees.
- Also 6" square & round risers with patented reducing Tee.
- Constructed of heavy-weight, high-density polyethylene.
- Parts highly adjustable & interchangeable with others on the market.
- Orifice plate placed at tee level or at ground level.
- Exclusive locking device on each part.
- User Friendly-Priced effectively.
- Adaptor available to repair old metal or broken intakes.

Type 1 Riser - 6" 8" & 10" Trash Baskets with marker cup features

Why inventory 2, when 1 serves both!

Blind End 6" Internal Coupler

6" 5" 4"

"Dealer Inquires Welcome"

PRECISION INTAKES

Norm & Coretha Rozendaal (800) 932-7611
 2064 Republic Ave West, Monroe IA 50170 (641) 259-2651
www.precisionintakes.com Fax (641) 259-3218

PROUDLY MADE IN THE USA



BUCKEYE WHEEL TRENCHERS—AG /INDUSTRIAL

PRO STRINGER TILE TRAILERS

AG CAM CAMERA SYSTEMS

BUCKEYE/LINK SELF-CONTAINED PLOWS

LASER GRADE CONTROL SYSTEMS

DUAL WALL DRAG BOXES/RADIUS CUTTERS

LINK PLOW ATTACHMENTS & UTILITY PLOWS

GPS MACHINE CONTROL

BUCKEYE AUGER BACKFILLERS

MID AMERICA TRENCHERS LLC



Phone: 515-789-2005

375 State St—Dexter, IA 50070

Fax: 515-789-2040

SALES@BUCKEYETRENCHERS.COM

WWW.BUCKEYETRENCHERS.COM

ILICA Ladies Page 10 Things You Should Do in Your Kitchen Tonight to Make Tomorrow Better



This goes way beyond setting the timer on your coffee pot.

Weekdays seem to pass in the blink of an eye, from time-crunched mornings to energy-zapped evenings, they can feel like a whirlwind. But, if you take (just a little) time in your kitchen space to try these chaos-saving tips, your following 24 hours will run much more smoothly.

1. Prep dinner for tomorrow - and leave instructions for the cook.

Dinner should be a team effort - which Wendy Fitch, Vice President of Crossroads, knows all too well. Since her husband gets home from work before her, she spends her nights prepping for the following day's dinner after the kids go to bed - then he tackles the meal when he gets home. "It truly has changed my life and his," she says. "And dinner gets on the table at a reasonable time."



2. Move frozen food to the fridge.

Don't wait until it's too late to defrost tomorrow's protein. "When planning to make a chicken dish, I take out a piece of frozen chicken the night before and place it in the fridge. That way when I return from work the next day it's completely thawed and ready to go," says Kayla Hockman, PR Assistant at Konnect Public Relations. Honestly, it's almost too easy.



3. Prep a breakfast that "cooks" itself.

Wouldn't it be amazing if you could wake up and have your breakfast waiting for you? That's more or less what Amanda Feifer, the author of *Ferment Your Vegetables*, does when she incubates homemade yogurt before bed: "When I wake up in the morning, it's perfect and ready to eat." Another excellent idea? Overnight oats (yum).



4. Or mix up all the dry ingredients.

Nope, making a batch of buttermilk pancakes in the early hours of the day doesn't necessarily make you an over-achiever (although, we say bravo!). Jomana Siddiqui, the blogger behind *A Happy Blog* has come up with a streamlined prep plan: "I pre-mix the dry ingredients and place them in a ziplock baggie. Then in the morning, you just mix the wet ingredients with the contents of your baggie for quick pancakes without reaching for a boxed mix."



Source: <http://www.womansday.com/home/organizing-cleaning/>

5. Clean and put away dinner dishes.

Just like you power down your body at the end of the day, you should wipe the slate clean in your kitchen, too. "Putting all the clean dry dishes away saves a lot of time in the morning and it's a lot easier to find equipment for steaming warm lunches for school, buttering bread, and packing homemade snacks," says Zaida Khaze, the founder and CEO of Wiggletot.

6. Set the table for breakfast.

Stop wasting time in the morning, by putting out what you already know you need beforehand: "I lay out cups, plates, and medicine or vitamins the night before," says Jennifer Raaths from *The Stationary Studio*. "That way, when we get up in the morning, I just fill up cups with milk and put waffles and fruit on plates."



7. Corral your kid's bags (before you're already late).



But don't just put them anywhere: "The night before I place backpacks and jackets on the backs of each child's stool," says Amy Bates, the blogger behind *Don't Look Under the Rug*. So when her kids are done eating breakfast, everything they

need is already with them.

8. Give refrigerated lunch items a dedicated shelf.

Stop hunting through your fridge for the pudding cup that's hidden behind last night's tacos. "I put lunch box supplies together on a low shelf so it's ready to be packed in the morning," says Nancy Haworth, a professional organizer at *On Task Organizing*. Problem solved.



9. Enlist your kid's help with lunch prep.

For items that don't have to stay in the refrigerator, like chips and some fruit. "All of this can, and should, be done the night before to make for an easier morning," says Linda Smith, the blogger behind *burlap+blue*. Plus, it teaches your kids a valuable lesson about the importance of preparing for the day ahead.

10. Prep your water so you *want* to stay hydrated.

Make it easy on yourself by adding some tasty flavors to your pitcher: "Purified water with sliced cucumber and mint, blackberries and mint, or pink grapefruit and limes makes the most refreshing drink that will not only have people at the office jealous, but will keep you hydrated all day," says Marianne Pestana, a radio host in Boston.





Illinois Land Improvement Contractors Association

5th Annual Area 6 Golf Outing - Friday, June 24, 2016

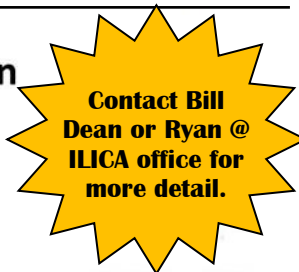
Meadowview Golf Course - Shotgun Start 1:00 pm

6489 Meadowview Lane, Mattoon, IL 61938

Golf & Dinner.....\$ 80.00

(Includes Green Fees, Golf Cart, Noon Hamburger lunch, Driving range, 2 Beverage tickets, evening Buffet Dinner & Prizes)

Golf Only..... \$ 55.00 • Dinner Only..... \$ 40.00



Outing Sponsors



www.birkeys.com









Enclosed is the check PAYABLE TO ILICA Registration Form Please RSVP By June 13

In the amount of \$ _____ for the following;	Golf & Dinner @ \$80	Golf Only @ \$55	Dinner Only @ \$40
1. _____	<input type="checkbox"/>	<input type="checkbox"/>	<input type="checkbox"/>
2. _____	<input type="checkbox"/>	<input type="checkbox"/>	<input type="checkbox"/>
3. _____	<input type="checkbox"/>	<input type="checkbox"/>	<input type="checkbox"/>
4. _____	<input type="checkbox"/>	<input type="checkbox"/>	<input type="checkbox"/>
My preferred foursome is: _____		<input type="checkbox"/> I do not have a preference	

Name: _____ Phone: _____

Green & Tee Sponsors

Company Name (To be listed on sign) _____

Contact Person: _____ Phone: _____ Email: _____

- Yes, we would like to Sponsor a Green or Tee - \$150
- Please provide our sign (\$35 per sign)
- We will provide our own sign (16" x 24")
- Use sign from last year's golf outing

Enclosed is the check **PAYABLE TO ILICA**, in the amount of \$ _____ for registration and sponsorship.

Meal & Outing Sponsors

- I would like to be a lunch sponsor \$250.00 *
- I would like to be a Dinner Sponsor \$350.00 *
- I would like to be an Outing Sponsor \$500.00 **
- I would like to be an Outing Sponsor & sign up a foursome \$740 *** (includes 1 free golf & dinner registration)

Mail check and this form to:

Illinois LICA - P.O. Box 474 - Brimfield, IL 61517 (Credit Cards also accepted. Call the ILICA office @ 309.446.3700 for details)

* Lunch and Dinner sponsors will have signage in place at registration table and dining area and receive recognition in the ILICA Directory.
 ** Outing sponsors will have signage (including company logo) in place at registration table, in dining area & at cart pick up location. Sponsor will receive recognition in the annual ILICA Directory, as well as at the Annual Convention and Member Meeting.
 *** Outing sponsors that also purchase a foursome receive special pricing on golf & dinner registration; **buy 3 get one free!**

ATTENTION

ILICA Associate Members

With all the potential building projects on ILICA's horizon, it only seems fair to keep our very generous associate members in the know.

The most immediate opportunities will be the Wetland Project in Bureau Co. the 2nd week in August and even though a specific site has not been selected, the Illinois Corn Growers field lab project will most likely be in the Champaign/Urbana area. The committee is hoping to get things determined in time for late summer as well.

With multiple opportunities for equipment and/or material donations on these projects, the ILICA Leadership wants to assure our associate membership that they DO NOT expect everyone to donate at every opportunity.

If you are interested in participating in one or both of these building projects or would like more detail about the construction itself, please contact Ryan at the ILICA office at (309) 446-3700 or via email at Ryan@illica.net.



Quality Products...Unequaled Service

Over 50 years of manufacturing and supplying corrugated metal pipe and related highway drainage products.

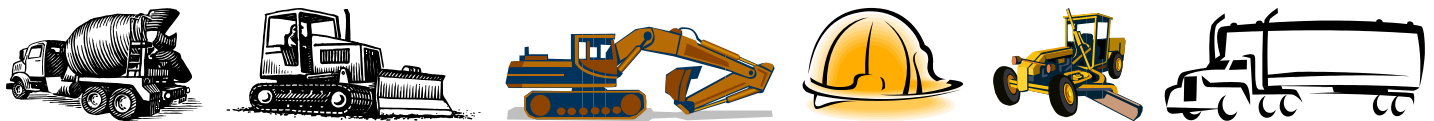
Havana, IL Office (309) 543-2271

Monmouth, IL Office (309) 734-4113

Corporate Office (800) 735-7312

Email: sales@metalculverts.com

www.metalculverts.com



LEADING & EDUCATING

Prinsco has been an industry leader for over 35 years. We've also created online tools to help educate our customers and communities about the benefits of responsible water management practices! Go to our YouTube.com/PrinscoInc to watch and share our "Agricultural Water Management 101" video and find other valuable resources.



WATER MANAGEMENT SOLUTIONS SINCE 1975

11 manufacturing facilities in the U.S. & Canada

800.992.1725 prinsco.com



THANK OUR ASSOCIATES FOR THEIR SUPPORT BY SUPPORTING THEM!



BOWER'S GREAT LAKES INTER-DRAIN, INC.



WWW.GREATLAKESINTERDRAIN.COM

**YOUR INTER-DRAIN DEALER FOR NEW
AND USED EQUIPMENT & PARTS**

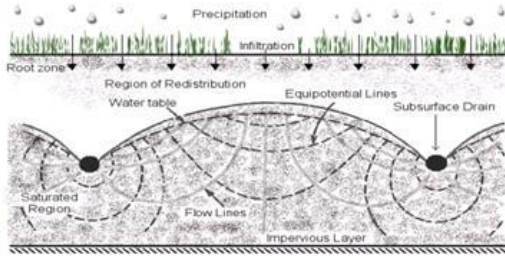
PHONE: 419-547-2379

TOLL FREE: 844-473-2379

SALES@BOWERSGLID.COM



EXCELLENCE BY EXPERIENCE



The Extension Connection

Source: University of Illinois Extension

LiDAR and the Design of Drainage Systems

The word “lidar” was originally conceived as a merging of the words “light” and “radar,” but it has come to be an acronym for Light Detection And Ranging (written as LiDAR). LiDAR uses light (lasers) to image objects, much the same way that radar uses radio waves. One of the derivatives of a LiDAR image is a digital terrain map. In Illinois, such maps are being used to map terrain at a resolution of 2 feet to 6 inches. Shown in Figure 1 is a map of counties for which LiDAR images are available. Counties in the north and if the south have been mapped. Nineteen counties, mainly in west central Illinois have not yet been mapped.

Questions often arise about the use of LiDAR data for drainage design. In this article, contour maps created from LiDAR and GPS survey of the same field are compared. These maps are created in QGIS (<http://qgis.org/en/site/>), a public-domain GIS that is free, easy to use, and available for Windows, Mac, and Android computers. It also has the ability to convert maps between coordinate reference systems on the fly. Thus a map created in latitude/longitude coordinates can readily be displayed in state plane coordinates.

Figure 2 shows a LiDAR and a GPS survey map of a field in Illinois. In both these maps, a lighter color represents a higher elevation. On the LiDAR map, it is easy to distinguish high and low areas, and thus to make preliminary decisions about flow directions and the location of swales. It’s not as easy to do the same on the GPS-based map.

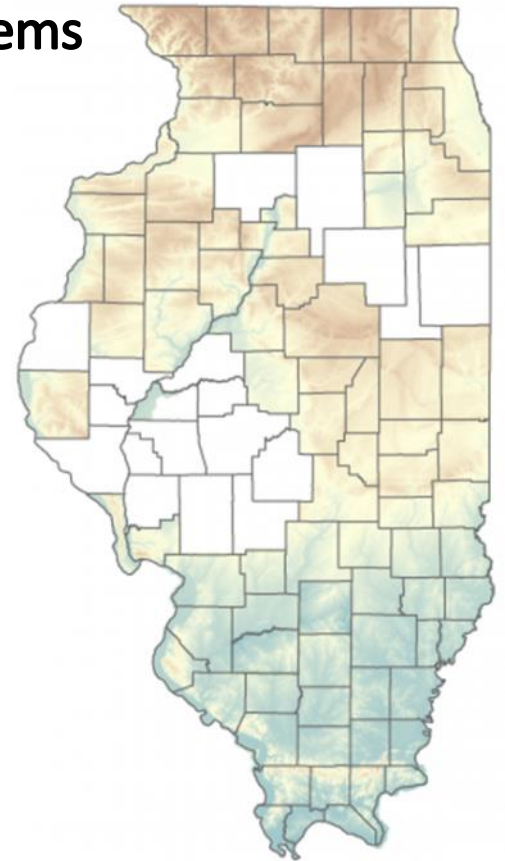


Figure 1. LiDAR availability map for Illinois.
(<https://clearinghouse.isgs.illinois.edu/data/elevation/illinois-height-modernization-ilhmp-lidar-data>)

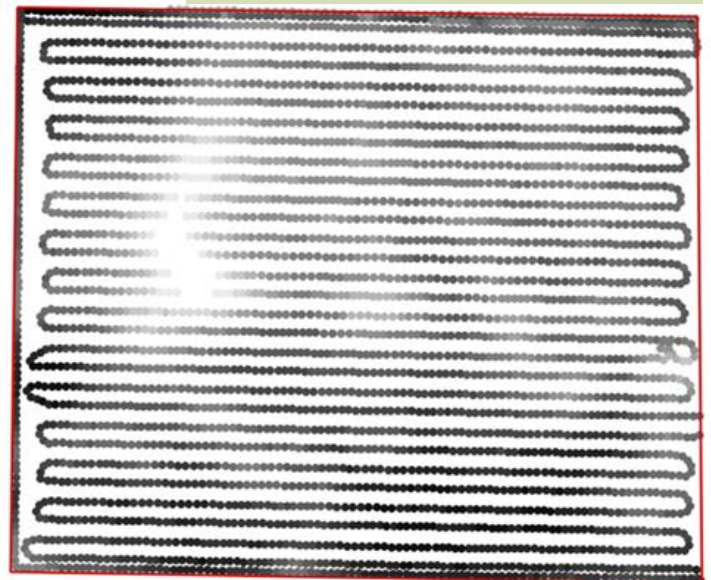
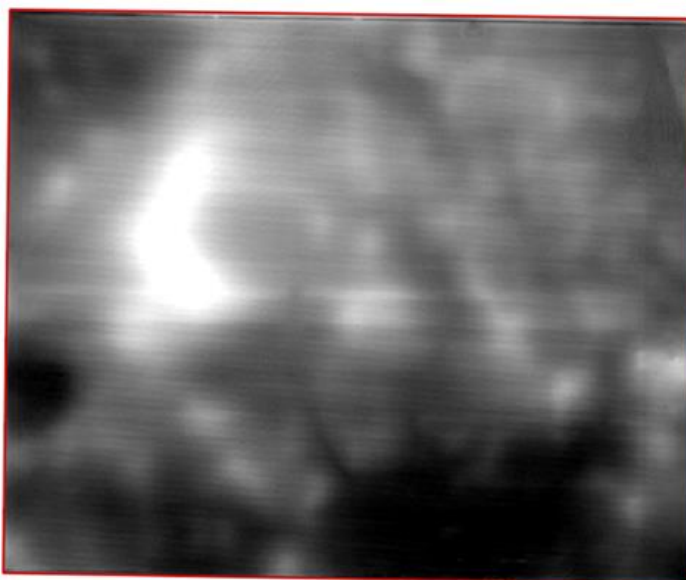


Figure 2. LiDAR map (left) and GPS survey points of a field (right).

LiDAR and the Design of Drainage Systems

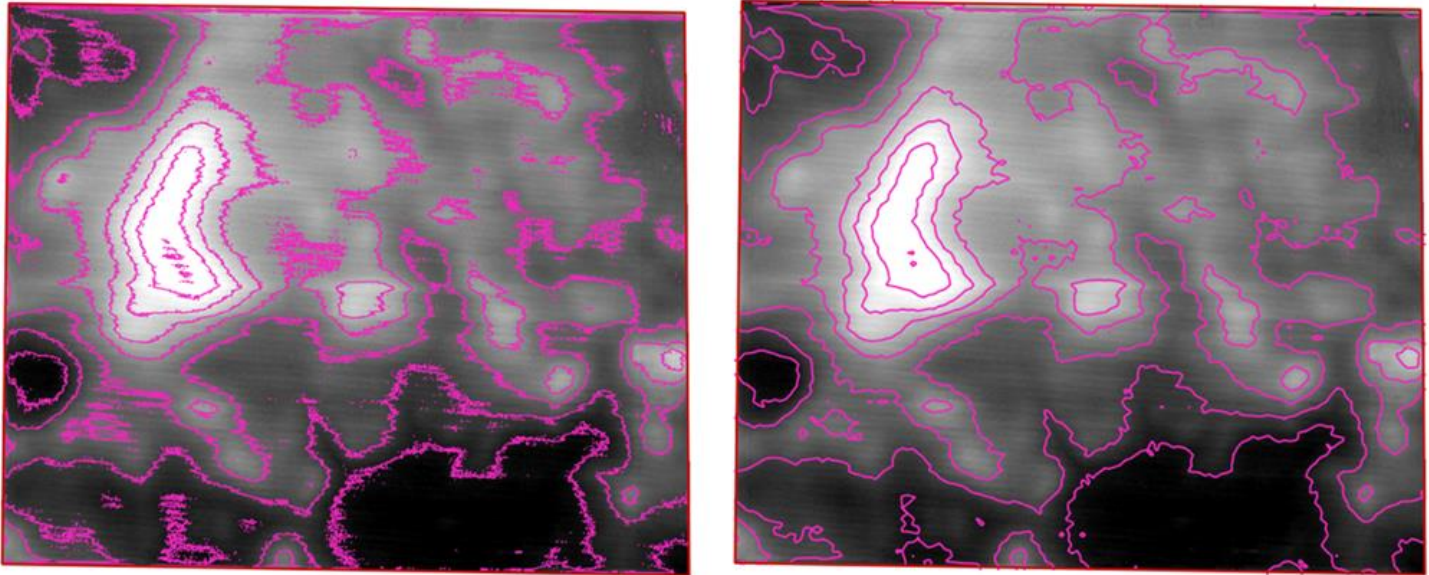
CONT.

Figure 3. Contour maps created from raw LiDAR data (left) and from LiDAR map thinned to a 25' x 25' grid (right).

Figure 3 shows 1' intervals contour maps created from the raw LiDAR data, and from the LiDAR map thinned to a 25' x 25' grid. The contour map from the raw LiDAR consist of hundreds of contour lines that creates the effect of fuzzy contours. Each cell in the LiDAR map covers a 2.5' x 2.5' area. When this map is thinned out to 25' x 25' cells, much fewer contour lines are created, without much loss in accuracy.

Figure 4 shows contour maps from the GPS survey on top of the LiDAR map. Two contour maps are shown. The map on the left was created using the inverse distance weighted interpolation (IDW) technique. One of the artefact of this technique is that each measured point is treated as a point of maxima or minima. This method was suitable for sparse surveys where measurements were mainly taken at high points, low points and slope breaks, but it is not suitable for GPS-based surveys. More suitable are the contours based on the triangular irregular network technique, shown on the right. Other interpolation methods such as kriging or minimum surface curvature are not implemented in QGIS.

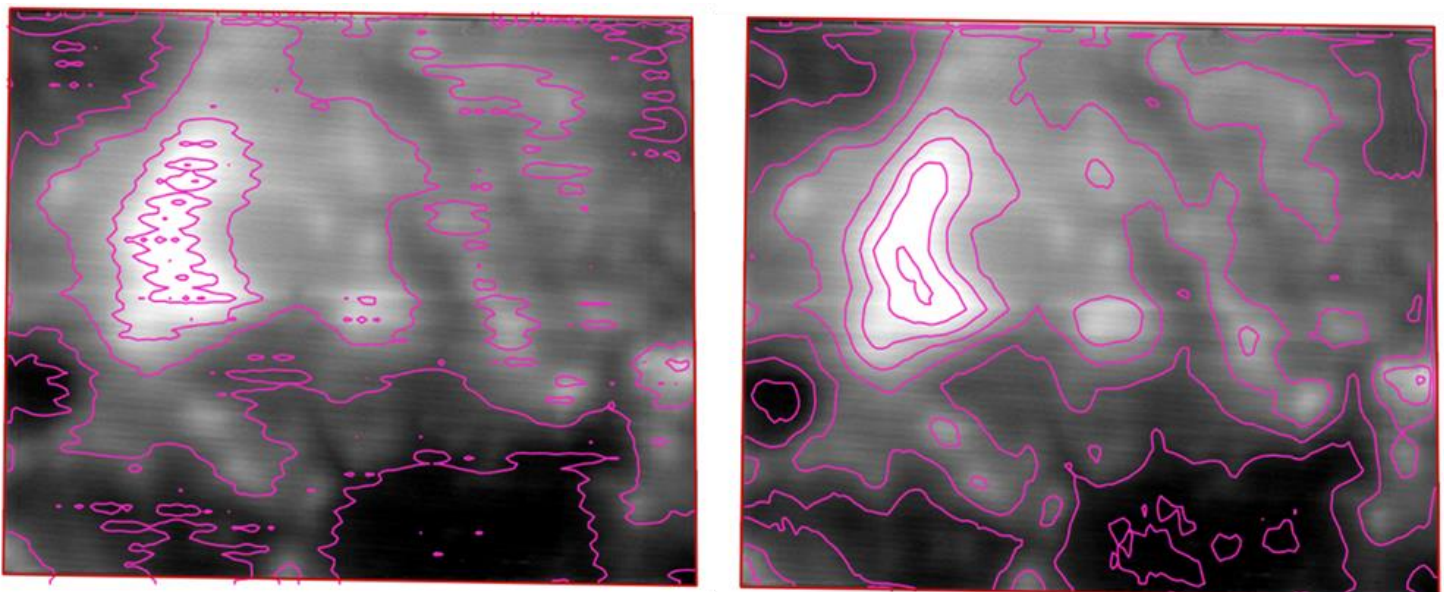


Figure 4. Contour maps from GPS survey interpolated to 25' x 25' grid using Inverse Distance Weighted (left) and Triangular Irregular Network (right) interpolation methods.

LiDAR and the Design of Drainage Systems

CONT.

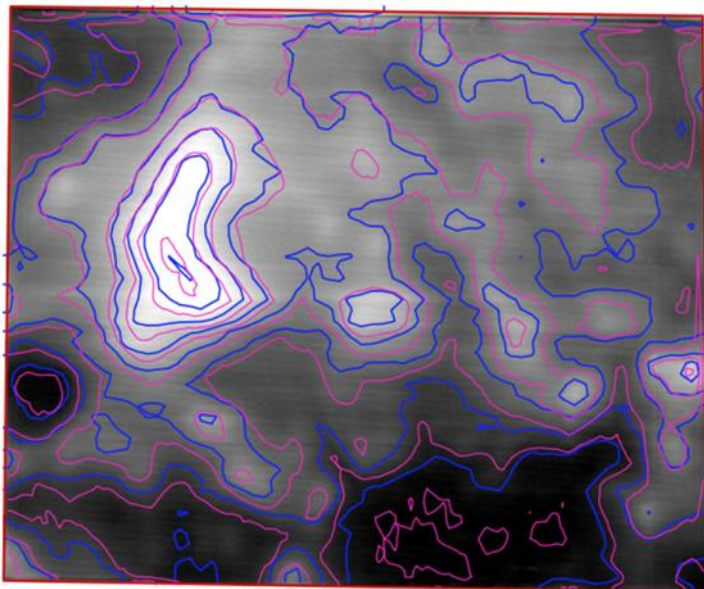


Figure 5. Superposition of Lidar-based (blue) and GPS-based (purple) contours from a 25' x 25' grid.

a raw LiDAR map of the field, 2) a 25' x 25' LiDAR-based satellite image of the field. If there is demand, we will provide

Contour lines from LiDAR-based and GPS-based 25' x 25' grids are shown in Figure 5. Corresponding contours lines are more closely matched at higher elevations. Even at lower elevations, however, the match is closer than that between corresponding contour lines in the two GPS-based maps interpolated with different techniques.

In this example, the LiDAR-based map appears to be good enough for drainage design, if only for preliminary designs. Thus LiDAR could be a useful tool in the contractor's tool box. The county LiDAR maps are big (the derivative maps for Champaign county is 7.1GB, for example), even though they come in compressed form. They take hours to download and expand. However, after the maps have been expanded, it's easy to clip out the map for a particular field. We have downloaded maps for 5 counties in central Illinois; Champaign, Coles, Logan, Macon, Piatt, and Vermilion; as part of the Field Lab project that is being undertaken with ILICA support. If supplied with the coordinates of the 4 corners of a field, we will provide contractors with 1) grid, and 3) a 1' or 6" interval contour map overlaying a

similar service for other counties in Illinois.

ILICA SUMMER BUILDING PROJECTS

The show committee has been meeting with partner groups in the initial planning stages for this summer's proposed field projects. Here are few points from those meetings with the IL Corn Growers on their Field Labs project and The Wetlands Initiative on the confirmed wetland project.

Illinois Corn Growers (ICG) Research Field Labs

- Project goal: research and document various practices & types of management that impact nutrient loss to document the effects of NLRs practices/management and to potentially discover additional techniques to reduce nutrient loss. Project to be based on a corn/soy rotation (80ac/ea) under "typical", field-scale conditions statewide (~5 sites).
- ICG most interested in completing tile drainage setup for monitoring equipment on one site this fall, near University of Illinois campus.
- ILICA to evaluate ~12 potential sites based on maps (i.e. topography, aerial, soils) to narrow in on a few to site visit for project feasibility.
- Dr. Cooke has preliminary project site locations and is checking into LiDAR availability.
- Once possible sites chosen, ILICA & ICG to schedule a meeting with producer to evaluate site to move forward.
- Next IL Corn/ILICA meeting scheduled for May 6 @ 10a in the "Corn Crib" (IL Corn office)

Ryan has sent LiDAR maps for 6 of the 10 sites for the ICGs' Field Labs project to the show committee for initial review. They are slated for a conference call on May 4th at 7:30pm to narrow the selections to 2-3 they think would be a good fit for the project. The committee is scheduled to meet with ICG May 6th, so the goal is to have a few targeted sites to bring ICG to proceed with on-site scheduling.




Wetland site visit with Jill Kostel of TWI, ILICA show committee members and soil scientist Steve Zwicker from Zwicker Soil Consulting, in the hole.

The Wetlands Initiative (TWI) Wetlands Construction

Several members from ILICA, TWI, NRCS, and Bonucci's, the land owners, met on site to discuss the project and review the initial designs for the 0.8ac wetland and 3.0ac buffer area.

Initial discussions include a 5-day demonstration with one day being the main show day containing various conservation industry presenters. Construction is set for the second week of August and the Show Committee will address this project on their May 4th conference call as well. Another conference call is scheduled for May 10th @ 9am with TWI to discuss the project in more detail. Planning is well ahead of last year, which is exciting for everyone involved.



LEE MILONE
OWNER / MANAGER

Phone (618) 395-8046
Fax (618) 393-4702

1-800-247-7972

4678 Weinmann Dr., Suite A
Olney, IL 62450

"WE TAKE PRIDE IN OUR WORK AND SERVICE WHAT WE SELL"



ENVISION

INSURANCE GROUP

Owned and Operated by
Miller Dredge Insurance

Four Area Locations to Serve You

7150 N. University St.
Peoria, IL 61614
(309) 683-1100

456 E. Main St.
Galesburg, IL 61401
(309) 343-1168

300 E. War Memorial Dr.
Peoria, IL 61614
(309) 685-6606

150 S. Main St.
Morton, IL 61550
(309) 263-2400

- Business & Personal Insurance
- Life & Health Benefits • Bonding



"Service is Our Business"

See us for your farm, commercial and industrial needs.

We carry a full line of Shell Rotella and Pro Performance products.

Roger Bragg **Office:** Rick Bennett
217-259-1996 **217-728-7195** 217-246-5162



Since 1923 supplying quality drainage products with service second to no one...

Why Fratco Pipe and Fittings?

Quality and Service. We are 100% committed to offering the best HDPE corrugated pipe and fittings to the market, with a friendly and knowledgeable staff that is dedicated to providing unparalleled flexibility and delivery, ensuring prompt and accurate order filling from our fully stocked yards.



Experience the Fratco Difference....

Members of:





ST. ANNE OFFICE
499 SOUTH OAK ST.
ST. ANNE, IL 60964
(815) 427-8144
(800) 475-8144

www.fratco.com



MT. PLEASANT OFFICE
1600 W. WASHINGTON ST.
MT. PLEASANT, IA 52641
(319) 385-1213



FRANCESVILLE OFFICE
4385 SOUTH 1450 WEST
FRANCESVILLE, IN 47946
(219) 567-9133
(800) 854-7120

Members of:







LICA FY17 CONSERVATION COALITION LETTER



Below is a copy of the letter that LICA was signatory to along with 4 pages of other signatures, asking the House and Senate not to re-open the 2014 Farm Bill as some would like to do. This letter was provided to state LICA chapters by John Peterson, LICA Director of Government Relations.

The Honorable Robert Aderholt, Chairman
House Agriculture Appropriations
Subcommittee

The Honorable Jerry Moran, Chairman
Senate Agriculture Appropriations
Subcommittee

The Honorable Sam Farr, Ranking Member
House Agriculture Appropriations
Subcommittee

The Honorable Jeff Merkley, Ranking Member
Senate Agriculture Appropriations
Subcommittee

Dear Chairman Aderholt, Chairman Moran, Ranking Member Farr, and Ranking Member Merkley:

The undersigned organizations oppose re-opening the farm bill and thus urge you to protect farm bill conservation program mandatory funding as you consider agriculture appropriations legislation for fiscal year 2017. We further urge you to meet USDA's discretionary funding request for Conservation Technical Assistance.

The 2014 Farm Bill consolidated or eliminated nearly a dozen conservation programs and reduced mandatory conservation spending by \$4 billion, \$6 billion when sequestration is included. The House and Senate Agriculture Committees did their parts to reduce federal spending and did so voluntarily. The cuts contained in the farm bill, combined with changes in mandatory spending in appropriations bills, have already caused new enrollments in conservation programs to decline by millions of acres. For example, as a result of cuts contained in the FY 2015 CRomnibus, USDA was able to accept only one quarter of the eligible producers who applied to the Conservation Stewardship Program (CSP) and Environmental Quality Incentives Program (EQIP).

It is estimated that sequestration alone will cut \$265 million from mandatory conservation spending in FY 2017. Opening up the farm bill to reduce these programs even more should be off the table in the FY 2017 appropriations bill.

We appreciate that USDA does not propose any cuts to Farm Bill conservation programs in FY 2017, and we urge you to prioritize the conservation and enhancement of our natural resource as a vital investment in our future. USDA's request includes full funding for critical conservation programs such as CSP, EQIP, Regional Conservation Partnership Program (RCPP), and Agricultural Conservation Easement Program (ACEP), among others. We urge you to protect these programs that enable farmers, ranchers, and foresters across the

country to conserve water, maintain their soil, protect farmland and wetlands, create and maintain wildlife habitat, and produce abundant food and fiber.

In addition to leaving farm bill conservation funding intact, we urge you to meet USDA's request for \$860.4 million in discretionary spending for Conservation Operations, including \$760.7 million for Conservation Technical Assistance (CTA). USDA's ability to deliver conservation programs to farmers and ranchers depends heavily on on-the-ground technical assistance. CTA provides landowners with the site-specific solutions needed to implement conservation practices on their lands, while providing accountability to ensure maximum return on the public investment. We must not hamstring our investment in conservation by under-funding technical assistance.

Agricultural conservation programs are the first line of defense in preparing for extreme weather events and avoiding the need for environmental regulations. Additional cuts to voluntary conservation programs would leave producers high and dry when trying to build soil resilience, create and maintain habitat for threatened, endangered, or economically important fish and wildlife, and prepare for and manage drought and flooding. Less funding would mean less pollution abatement and more regulation, as well as less productive and profitable farmlands as soil erodes and nutrients are lost. Moreover, the number of qualified farmers denied access to the programs would grow even larger.

As the Subcommittees develop FY 2017 appropriations bills, we urge you to keep the farm bill intact, to reject cuts to conservation programs, and to adequately fund Conservation Technical Assistance.

Sincerely, Land Improvement Contractors of America (*along with 144 other state and federal organizations*)



2016 ILICA ANNUAL PICNIC & MEMBER MEETING

June 25th, 2016 - Dean Drainage LLC 3356 US Hwy 45, Mattoon, IL



Including:
Case-Birkey's Hands-On Equipment Demo & Backhoe Rodeo

Illinois LICA has planned our annual picnic and summer members' meeting to coincide with the 5th Annual Area 6 Golf Outing in Mattoon. After Friday's golf outing fundraiser, Birkey's is hosting a hands-on equipment demonstration & backhoe rodeo near Bill Dean's shop from 9 am until noon. Breakfast will be provided prior to the demo at Bill Deans' shop. Information & directions will be provided for alternate ladies activities such as Beaches Grocery in Arthur, the Tanger Outlet mall in Tuscola, and Douglas-Hart Nature Center in Mattoon, all within 30 minutes of Bill Dean's.

A picnic lunch will be held at Bill Dean's place followed by the summer member meeting at 1:15 pm. Those who want to stick around after the meeting and enjoy the Dean's incredible hospitality and swimming pool are more than welcome to do so.

Please join us for a day of family fun in lovely Mattoon , Illinois!

Please RSVP by June 10th

Name/Company Name: _____

- Yes, I/we will attend Breakfast prior to Equip. Demo. # _____ \$5/person (children <6 free)
- Yes, I/we will attend Lunch. # _____ \$5/person (children <6 free)
- Yes, I/we will attend the member meeting at 1:15pm. # _____

Please list names of all those attending. _____ , _____
_____ , _____ , _____

Return To: _____ Total Amount Enclosed: \$ _____

ILICA
Ryan Arch - P.O. Box 474
Brimfield, IL 61517 or Fax: (309) 446-3744

OR Bill Me

This notice is to inform all officers, directors, alternate directors, chairmen and members of standing committees, and all active members of the Illinois Land Improvement Contractors Association, Inc. that the next ILICA members meeting will be held on June 25, 2016 at 1:15pm at Dean Drainage.
All members are welcome and encouraged to attend.

Hotel Block Information
Tournament in town, rooms going fast; don't miss out! Blocks Drop May 24, 2016!

Quality Inn Suites - Phone: (217) 235-0222 4922 Paradise Road, Mattoon, IL \$89+tax	Comfort Inn - Phone: (217) 619-0480 1408 E. Broadway, Mattoon, IL King \$114.99+tax <i>Code ILICA</i>
---	---

FEATURED BENEFIT: ILICA CONSTRUCTION PROJECTS

All signs point to more than one construction project again this summer and with so many new ILICA members who were not around "back in the days" of Conservation Expos, it seemed like a good time to feature the benefits of participating in these shows.



CONTRACTOR BENEFITS

- ✓ Have the opportunity to operate the newest construction equipment available today, thanks to our generous associate members.
 - ✦ Operate equipment you may be less familiar with, under the guidance of those who are very familiar.
- ✓ Learn firsthand about state and federal cost share programs as well as the latest Best Management Practices (BMPs) designed for today's conservation work.
- ✓ Work with some of the best in the business and learn methods and time saving shortcuts that can make a difference on your next job.
- ✓ Life-long friendships that are formed while working on a project like this.

ASSOCIATE BENEFITS

- ✓ Put your equipment or materials in the hands of your target sales audience.
- ✓ Opportunity to meet contractors and develop relationships.
- ✓ Marketing exposure from project partner and ILICA promotional materials, newsletter and website coverage as well as on-site signage.
- ✓ Post project recognition at ILICA events.
- ✓ Access to project photos and video for your marketing department.

(above) Installation of control structure at the outlet for the Bureau County wetland. (below) 2 more action photos from the Bureau County wetland project last year, aerial shot of 2015 FPS tiling installation, courtesy of Chris Kaufman, SFDI.



CONTRACTOR CLASSIFIEDS

FOR SALE/WANTED

LOOKING TO BUY:

Vermeer 600D Tiling Machine (or similar)
Contact Miles Warren @ 618-676-1176
for more information

FOR SALE

3" - 4" Tile Boot with Blinders



**Fits 2500 Hydramaxx
 Complete 10"
 Chain & Cutters
 Trailer**

Call Bill for more detail @ (309) 360-9667

**Contact the ILICA office today to find out
 what you're missing!
 (309) 446-3700 or email: Ryan@illica.net**

CALENDAR OF EVENTS

Illinois

May Board Meeting - May 14, 2016

**Richland Community College
National Sequestration Education Center**

Committee meetings - 10 am - 1 pm
Board Meeting - 2 pm

Area 6 Golf Outing - Friday June 24, 2016

Meadowview Golf Course - Mattoon IL

Lunch at Noon: 1 pm Shotgun start: 5:30 pm dinner

Hotel Block at Quality Inn & Comfort Inn - Mattoon, IL

Summer Picnic, Member Meeting & Backhoe Rodeo

Saturday, June 25, 2016

Dean Drainage - Mattoon IL

Breakfast at Dean Drainage - 8:30 am

Birkey's Sponsored Backhoe Rodeo - 9 am - Noon

Lunch at Dean Drainage - Noon

Member Meeting - 1:15 pm

National

LICA Summer Convention

InterContinental Kansas City at the Plaza

401 Ward Parkway, Kansas City, MO

July 18 - 23, 2016

Hotel Block available Now!

**Board of Directors Meeting
Saturday, May 14, 2016 - 2 pm
Richland Community College
National Sequestration Education Center**
Committee meetings - 10 am - 1 pm

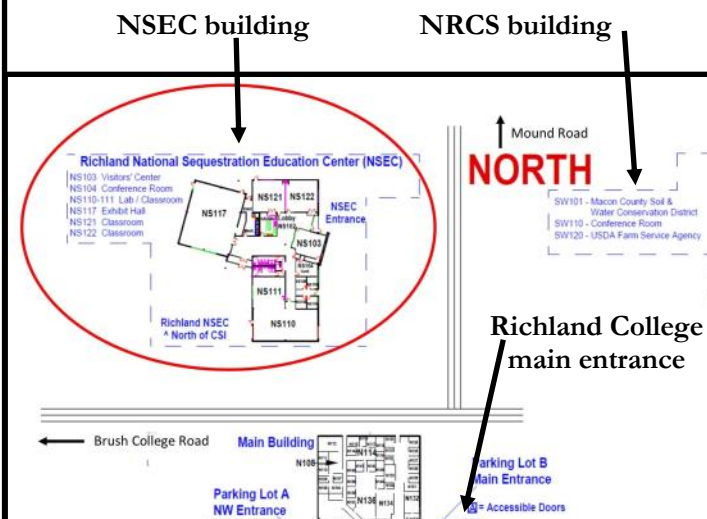


Directions From I-72:

Take the IL-48, Exit 144, toward Oreana/Decatur and merge onto IL-48 via the ramp on the left toward Decatur. Turn left onto CR-1 (N. Brush College Road) and follow to the light at Mound Road. Turn left onto Mound Road and take the first right. The National Sequestration Education Center (NSEC) is on the right, before you come to the stop sign to cross over into the Richland parking lot, across from the NRCS building parking lot. Lunch will be catered in for the group.

ADVERTISERS INDEX

Agri Drain Corp	4
BM Truck Equipment	15
Bower's Great Lakes Inter-Drain, Inc.	11
BRON	23
Brown Bear Corp	2
E-K Petroleum, LLC	15
Envision Insurance Group	15
Fratco, Inc.	15
JCG Midwest	2
Martin Equipment of Illinois	24
Metal Culverts Inc.	10
Mid America Trenchers LLC	7
Midwest Plastic Products	23
Mike Cooks' Soil & Water Mgmt. Systems	2
Northland Trenching Equipment, LLC	3
Precision Intakes Ltd	6
Prins Insurance Inc./United Fire Group	24
Prinsco	10
Roland Machinery Co.	24
Schlatter's	5
Springfield Plastics Inc.	24



REDUCE THE RISKS OF DIESEL EXHAUST EXPOSURE

Cont.

*Safety Matters: From Prins Insurance
Zynwave LICA Portal*



Personal Protective Equipment (PPE)

If other control methods cannot reduce the amount of exhaust, use proper PPE.

- Only a full-face piece, positive pressure, supplied air respirator can provide adequate protection.

- Make sure respirators are properly fitted, cleaned, stored and maintained by OSHA standards.
- Always use PPE in addition to, and never as a substitution for, other control methods.

OSHA AND THE COMPETENT PERSON

OSHA officials have long recognized the potential danger that employees face when doing trenching or excavation work. That's why OSHA requires that a competent person be onsite when construction crews are doing this kind of work.

According to the OSHA Construction Standard, a work site's competent person must be capable of identifying existing and predictable hazards on job sites; must be able to identify working conditions that are unsanitary, hazardous, or dangerous to workers; and, importantly, must have the authority to take the measures necessary to correct these dangerous conditions. That includes having the authority to shut down work until steps are taken to boost the safety of a job site.

Several manufacturers of trench shoring products provide training classes to help contractors meet these federal requirements. This includes National Trench Safety, which offers a variety of training classes for contractors and workers who are doing excavation work, including the standard training needed for a contractor to certify a competent person. National Trench Safety also offers specialized classes, such as those focusing on the steps contractors must take to work safely in confined spaces.



Credit: Efficiency Production

A contractor taking National Trench Safety's courses would be able to identify and test soil types to help choose the best safety system for a particular job. This contractor would also learn which safety systems - from hydraulic shoring to trench shields - are best for which jobs.

"Most contractors are finding it to their advantage that their key personnel at a minimum have a good understanding of all the regulations to avoid very expensive fines and/or criminal prosecution," says Hartman. "Contractors have pretty much determined that safety is a priority. Even the entry-level employee, before being put to work, should have a basic understanding of the rules and regulations and the potential hazards in the business."

Hartman says that the construction business has changed for the better when it comes to safety. Federal regulations say that every job site featuring excavation and trench work needs at least one person onsite who is certified as a competent person. But many contractors are going further, providing safety

training for all of their employees who work in the field.

"The thought is that the newest person on the job should have at least the same basic understanding of the hazards involved in underground work as the most experienced superintendent," says Hartman.

Training Matters

Mitch Post, training and development supervisor with Elkridge, MD-based Mabey, says that he, too, has noticed an increased focus on safety among contractors today. Mabey, too, offers training classes to contractors who want to meet the federal regulations necessary to take on excavation and trenching work.



Credit: Pro-Tec Pro-Tec installing shoring

The company even runs its own mock job sites in controlled conditions. Post says that this gives contractors the chance to learn the hazards of underground work without putting themselves in real danger.

"Before they get out in the real world and do it for real out there, this gives contractors the opportunity to come in and learn about soil types and learn about shoring," says Post. "We feel that learning this way is a lot safer, especially for new companies coming into the business that are trying to learn on the fly. There is not a one-size-fits-all solution when it comes to excavation work, and we think that learning that in controlled conditions is the best approach."

Like others in the shoring business, Post says that contractors should sign up for as much training for themselves and their employees as possible. That includes providing training not just for one competent person but for all employees who are going to take on potentially hazardous excavation work, he says.

Employees who have received safety training will be better equipped to react properly when challenges do come up on an excavation job, he says.

"There is no such thing as a job that goes according to plan," says Post. "If you are better prepared, you put yourself in

continued on page 22 ...

OSHA AND THE COMPETENT PERSON

a better situation. It is better to get that knowledge before you get out there on the job site.”

Contractors are even willing today to take safety measures that could result in a slowdown on their job sites, says Post. He points to contractors who usually take on utility jobs. There are times when such contractors have to dig underground. If they have little or no experience in this type of work, many will shut down their sites and sign up for excavation training with Mabey, says Post.

They'll then spend a day on training before re-opening their sites the following day, says Post. Yes, this does add extra time to a job. But this training break might also be the difference between a smooth excavation job and a serious accident, says Post.

“They'll come here for a day to learn about safety measures,” says Post. “It's a huge opportunity for them to keep their crews safe. We do quite a bit of this type of training throughout the year.”

There are many reasons why contractors are more focused on safety, says Post. One of the big ones? The economic downturn of 2008.

During these rough economic times, many of the sloppier, fly-by-night contractors went out of business. They could no longer find enough jobs once the economy became tighter. The companies that survived the country's long financial slump?

They were the stronger ones.

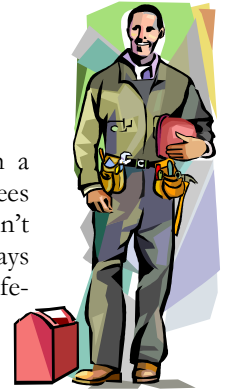
They also happened to be those with a stronger focus on keeping their employees safe. “So many of the companies that weren't conscious of safety have gone away,” says Post. “They were sloppy when it came to safety, but they were sloppy in other ways, too. The companies that survived were good when it came to safety and good, in general, when it came to running their businesses. These companies understand that they can't afford not to be safe. The chances of an incident being serious or fatal is very high with this kind of work. It can wipe out a company.”

Post says that the best contractors look at safety like it is a football game. To be successful, you need a game plan before you begin digging.

“Don't show up on the job site, start digging, see the issues and then start thinking about your shoring and safety plan,” says Post.

Instead, savvy contractors study the soil types on all new job sites before their construction crews start digging. They know when underground utilities are in the area. They know where groundwater is.

“Knowing all this can save contractors a lot of headaches before they start digging, that's for sure,” says Post.



2016 NATIONAL SUMMER MEETING KANSAS CITY, MISSOURI ~ JULY 18-23

2 of the interesting
tours planned for this
year's conference!

Intercontinental Kansas City at the Plaza - \$135 (plus tax) per night. The cut-off date is June 27, 2016. call 866-856-9717 (LICA Summer Meeting) Or visit www.kansascityic.com. Group code is LIC



The Arabia Steamboat Museum A Historic Kansas City Attraction



The Arabia Steamboat Museum is a unique Kansas City attraction: a time capsule of life on the American frontier in the mid-nineteenth century. It is the largest single collection of pre-Civil War artifacts in the world.

In September 1856, the Arabia was carrying over 200 tons of cargo intended for general stores and homes in 16 mid-western frontier towns. The steamer was still fully loaded when it hit a tree snag and sank just 6 miles west of Kansas City.

The collection is a work in progress as preservationists continue to clean 60 more tons of artifacts in a preservation lab that's available for visitors to watch. More artifacts are added to the displays on an ongoing basis, and the entire museum was cleaned and renovated in early 2013.

Big Brutus Tour - Tuesday, July 19 - 8:00am - 5:30pm

Miles before we reach this retired giant, we will be able to see Big Brutus on the horizon, south of West Mineral, Kansas. It is the largest electric shovel in the world, stands 16 stories tall (160 feet), weighs 11 million pounds, with a 150 foot long boom, dipper capacity of 90 cu. yds (enough to fill three railroad cars), a maximum speed of .22 mph, and was built for \$6.5 million in 1962. In addition to the museum, we can climb up into Big Brutus for a first-hand view of this amazing machine.

After we leave Big Brutus, we'll head to Chicken Mary's outside of Pittsburgh, KS for a late lunch. In the 1930s, after her husband was injured in the mines, Mary began supporting her family by using her home as a restaurant to serve other miners. Today, Chicken Mary's is operated by her grandchildren and in 2010, was named "the finest fried chicken in Pittsburgh, KS after winning the Food Channel's Food Wars versus Chicken Annie's. Chicken Mary's will be opening early so that we can have some of their tremendous fried chicken, along with nine different side dishes ... all prepared just for us!

BRON
POWER TO PERFORM

www.rwfbron.com

550 SELF-PROPELLED DRAINAGE PLOW

AUTO STEER READY

LOW GROUND PRESSURE

CAT OR CUMMINS ENGINE



- Standard Oscillating Track Frames
- Positive Drive On-board Reel
- Enhanced Operators Visibility
- FOPS/ROPS Certified
- Tri-Core Cooling System

1.800.263.1060 519.421.0036 www.rwfbron.com

BRON is a registered trade mark of RWF Industries a division of Roberts Welding & Fabricating Ltd.



WE GO TO GREAT LENGTHS

Farmers and contractors count on us for millions of feet of high quality drain tile.

- 3"- 48"
- Single & Dual Wall
- Fittings for All Sizes
- **FREE DELIVERY** within 300 miles

920-674-3332 | www.draintile.com | Jefferson, Wisconsin | Plainfield, Iowa

IT'S NOT JUST OUR PIPE
THAT'S FLEXIBLE



WE ADJUST TO YOUR NEEDS:

- ▶ Order accuracy
- ▶ Timely delivery with our own fleet of trucks
- ▶ We don't have customers. We have relationships.



Springfield Plastics, inc.
800-252-3361 • www.spipipe.com

Manufacturing 100% Virgin Resin Farm Drainage Pipe and Peace Of Mind

MARTIN
E q u i p m e n t



400 W Martin Dr 2384 J David Jones Pkwy #6 Terminal Road
Goodfield, IL Springfield, IL 62707 Peru, IL 61354
(309)925-2502 (217)528-4347 (815)224-4711

887 US Route 45
Tolono, IL 61880
(217)485-6755

3720 85th Ave W
Rock Island, IL 61201
(309) 787-6108

**ROLAND
MACHINERY CO.**

www.rolandmachinery.com

KOMATSU



Contact the salesman in
your county for all of you
equipment needs.



**Unearth
your potential.**

Protect your tomorrow.

We want to help you unearth your potential by
ensuring you have the coverages, service and
pricing you need.

Find an independent UFG agent on ufgins.com,
or contact Prins Insurance, Inc. at 800-831-8545.

