



ILICA

NEWS

Land Improvement Contractors Of America · Illinois Chapter

March - April 2016

- David Haag
Past President
- Tom Beyers
President
- Lee Bunting
Vice President
- Grant Curtis
First Vice President
- Ryan Arch
Executive Secretary
- Bill Dean
Treasurer
- Area Directors**
- Area 1**
Brian Brooks
- Area 2**
Steve Anderson
Stuart Anderson
- Area 3**
Joe Streitmatter
Mike Yordy
- Area 4**
David Kennedy
John McCoy
- Area 6**
Jon Seevers
- Area 8**
Norm Kocher
Brad Baker
Associate Director
- Ryan Arch
Executive Director

OUTSTANDING "FIESTA" LICA CONFERENCE

(page 9)



BY-LAWS CHANGES PROPOSED

(page 10)



IMPORTANT UPDATE ON 2016 GOLF OUTINGS

(page 15)



Also Featured Inside:

- Supreme Court Ends Challenge to the Chesapeake Bay Cleanup Plan** *(page 6)*
- NRCS and ADMC Update On Saturated Buffer Research** *(page 12-14)*
- IL Corn Precision Conservation Program Receives National Grant** *(page 17)*

Illinois LICA
P.O. Box 474
Brimfield, IL 61517

Upcoming Events:

- May Board Meeting**
Exact Location TBA
May 14, 2016 - 2 PM
- Area 6 Golf Outing**
Meadowview G.C. - Mattoon, IL
June 24, 2016

BRON
POWER TO PERFORM

www.rwfbron.com

550 SELF-PROPELLED DRAINAGE PLOW



AUTO STEER READY

LOW GROUND PRESSURE

CAT OR CUMMINS ENGINE



- Standard Oscillating Track Frames
- Positive Drive On-board Reel
- Enhanced Operators Visibility
- FOPS/ROPS Certified
- Tri-Core Cooling System

1.800.263.1060 519.421.0036 www.rwfbron.com

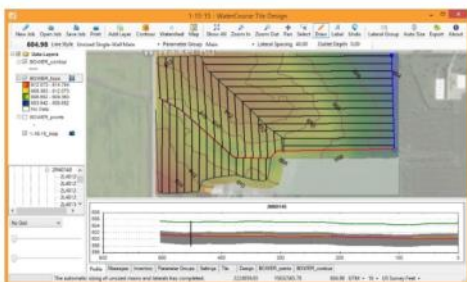
BRON is a registered trade mark of RWF Industries a division of Roberts Welding & Fabricating Ltd.

New in 2015!
AMW
WaterCourse
Tile Design

Mike Cook's Soil & Water Mgmt Systems

- Instant visual aids:
Contour, Color, Aerial Map
- Quickly draw mains & laterals
- See a real time buried profile
- Click & drag to adjust
- Autosize tile
- Get a tile cost report
- Export to grade control

- Your Source For:
- Continued AGPS Support
 - AMW Machine Control Products
 - NovAtel GPS
 - GPS controlled drain tile installation and land shaping
 - Tile and connection location guidance
 - iDigBest Excavator controls & More!



Now
partnered
with
JCG Midwest
to offer
local sales,
parts and
service!

Contact Mike or Nate: Phone: 989-587-3528 or 989-640-2347
Email: mike@cookswms.com or nate@cookswms.com

JCG MIDWEST
DRAINAGE PRODUCTS

****A ONE-STOP-SHOP FOR ALL YOUR DRAINAGE NEEDS!****

Located directly off of US Rt. 51 at:

2700 North Main St. - Moweaqua, IL 62550

(217) 768-3040

Email: JCGMidwest1@gmail.com Website: WWW.JCGMIDWEST.COM



Agri Drain
CORPORATION



- | PIPE: | ACCESSORIES: | EQUIPMENT: |
|---|---|--|
| <ul style="list-style-type: none"> • MAXI COILS • DUAL WALL • SINGLE WALL • FITTINGS • PVC • CORRUGATED METAL | <ul style="list-style-type: none"> • RISERS • FABRIC • SHOVELS • PROBES • TILE CUTTERS • WATER CONTROL STRUCTURES | <ul style="list-style-type: none"> • TRENCHER PARTS <ul style="list-style-type: none"> ◦ CHAINS, ROLLERS, CUTTERS, TEETH, SPROCKETS, CONVEYOR BELTS AND MORE • TILE CARTS • MAXI SPOOLS |



LET US HELP YOU SAVE TIME BY USING OUR DELIVERY SERVICE!

* ILICA SUPPORTER *

The ILICA News



Editor / Advertising Manager
Janet Burtle-Doubet

Past President
David Haag, Kempton

President
Tom Beyers, Odin

Vice President
Lee Bunting, Dwight

1st Vice President
Grant Curtis, Sciota

Executive Secretary
Ryan Arch, Galva

Treasurer
Bill Dean, Mattoon

Educational Advisor
Professor Richard Cooke
University of Illinois

The *ILICA News* is the official publication of Illinois Land Improvement Contractors Association, Inc. at 118 E. Knoxville St., Brimfield, IL 61517. (309) 446-3700.

Subscription price is \$50.00 per year, issued bi-monthly: Jan.-Feb.; Mar.-Apr.; May-June; July-Aug. Sept.-Oct.; Nov.-Dec., and also includes one annual directory.

FEATURES

Workshop Certifies More ILICA Contractors For 10-Hour OSHA 6

Supreme Court Ends Challenge to the Chesapeake Bay Cleanup Plan 6

Outstanding “Fiesta” LICA Conference In San Antonio 9

By-Laws Changes Proposed. 10

NRCS and ADMC Update On Saturated Buffer Research 12-14

Important Update On 2016 Golf Outings 15

IL Corn Precision Conservation Program Receives National Grant 17

Partner Letter From Laura Gentry 17

2016 National LICA Summer Meeting Notice 22

COLUMNS

Presidents Message 4

New Members 5

2016 Board Member Attendance 5

ILICA Ladies Page: Five Ways To Jump Start Your Garden For Spring. 8

2016 Committee Members 16

Featured Benefit: Contractor Classifieds & More 18

Advertisers Index 19

Board Meeting Notice 19

Calendar of Events 19


Safety Feature: Safety On Walking/Working Surfaces 20

The LICA Creed



Land, the foundation of the Nation
The basis of all wealth
The heritage of the wise
The thrifty and prudent
The poor man’s joy and comfort
The producer of food, fiber and fuel
The basis of factories
The foundation of banks

All that man builds is from the land. We often take it for granted or even abuse it; And yet many, unthinkingly and unknowingly pass the land by. What man does with the land will be the deciding factor of his survival.



LEE MILONE
OWNER / MANAGER

Phone (618) 395-8046
Fax (618) 393-4702

1-800-247-7972

4678 Weinmann Dr., Suite A
Olney, IL 62450

“WE TAKE PRIDE IN OUR WORK AND SERVICE WHAT WE SELL”



PRESIDENT'S MESSAGE

Thank you all for attending ILICA annual conference. This was the biggest conference yet and we continue to grow in membership numbers. The effort to host a septic system training session in the last couple years has been well received and attendance this year exceeded all expectations.

We picked up a few new members as a result. Thank you to all who attended.

ILICA was very well represented at the ILICA National winter conference and annual meeting at San Antonio, Texas. Member benefits continue to grow. Jerry Biuso continues to seek out and negotiate real benefits on behalf of the membership and the organization. The list has grown to be a litany of advantages, however, what is left to be done is for the members to take advantage of and use the benefits. Please check out the benefits included in every issue of the LICA newsletter as I think there is something in there for everyone.

There continues to be increased concern especially in the Midwest about the USEPA changes to clean up public waters (WOTUS, NLRs) and the Gulf of Mexico Hypoxia. Some States have passed legislation concerning these issues, for example, Minnesota has a grass filter strip law requiring 16.5 foot of grass on all county ditches, and Ohio enacted nutrient application regulations in advance of forecasted weather events. The recent developments affecting the US Supreme court makeup and the recent decision to not hear a case concerning some TMDLs for the Chesapeake Bay, has many ag groups very concerned about what might happen.

The LICA national board has increased their participation with the Ag Drainage Management Coalition (ADMC), they will soon have representation on the ADCMC board. Illinois is now the second largest Chapter in the National but New York is very close. Our own Steve Anderson, acting as National President gave a very motivational report, representing Illinois and LICA very well; Great Job Steve. Janet Doubet received the LICA Lady of the Year Award, congratulations to Janet, well deserved.

Janet has successfully completed the transfer of the ILICA executive director responsibilities over to Ryan Arch effective as

of February. Ryan now has completed his first regular board meeting, his first training workshop and has engaged the ED position with enthusiasm. Ryan and Cara recently added a new little girl to their family so a heartfelt congratulations to them. Ryan was in attendance at the ILICA annual conference and also present in San Antonio at the National LICA conference, where he made a great first impression.

Due to all the NLRs efforts, ILICA has the potential for several building projects this year. The Wetlands Initiative group is working on a second wetland to be constructed this summer. The Illinois Corn Growers has recently been awarded a RCPP grant and they are now considering proposed research farms which they have approached ILICA to install the tile system for. We have also recently viewed a small project for the University of Illinois. These projects may not develop due to funding concerns but if things happen as hoped, we might be very busy this summer. We will be looking for volunteers to come help, operate machines and complete these projects.

This is being written on the first day of Spring, so very soon all of us will be busy. Safety first!!!! As stated previously, ILICA just completed the 10 hr. OSHA and Flagger training. There are so many dangers out there in our industry, please take time to be SAFE.

Tom Beyers, President

**Do the right thing.
It will gratify
some people and
astonish the rest.**

Mark Twain

BrainyQuote®

Soil and water are precious resources which must be properly managed and conserved to ensure a healthy balance for agriculture and the environment.

Your Partners in Water Management since 1976!
800-232-4742 | www.agridrain.com

Facebook | Twitter

Agri Drain
CORPORATION

NEW MEMBERS Welcome! Active Contractors

Tyce Mahannah
Tyce Mahannah Excavating Inc.
 2945 South Twin Bridge Road
 Decatur, IL 62521
 Ph: 217-519-8923
 Email: tyceme@gmail.com

Chad C. Uthe
CNC Lawn Care, Inc.
 10920 Walnut Lane
 Mokena, IL 60448
 Ph: 708-478-5775
 Email: chaduthe@hotmail.com

Associate Members

Warner Construction Products - Matt Warner
 106 North Pointe Dr.
 Gifford, IL 61847
 Ph: 217-918-5179
 Email: mattwarner44@yahoo.com

Schlatter's Inc. Intelligent Water Management™



- Wolfe Drainage Plows
- Trimble GPS Machine Control
- RTK Topo Mapping
- Water Management Design Software
- DLog Tile Mapping



www.SchlattersInc.com
 (219) 567-9158 Francesville, IN

Thank You!



2016 Board Member Meeting Attendance

Area / Director	A = absent P = present C = cancelled meeting						
	Jan	Mar	May	Jun	Sep	Nov	
Pres: Tom Beyers	P	P					
VP: Lee Bunting	P	A					
1st VP: Grant Curtis	P	P					
Area 1 - Brian Brooks	P	P					
Area 2 - Steve Anderson	P	P					
Area 2 - Stuart Anderson	P	P					
Area 3 - Mike Yordy	P	A					
Area 3 - Joe Streitmatter	P	P					
Area 4 - David Kennedy	P	P					
Area 4 - John McCoy	P	A					
Area 5 - Vacant							
Area 6 - Jon SeEVERS	P	P					
Area 7 - Vacant							
Area 8 - Norm Kocher	P	A					
Associate Dir: Brad Baker	P	P					

2016 Board & Member Meeting Schedule

Unless changed by the board during the year, the ILICA business meetings are scheduled as follows:

May 14, 2016 - Regular Meeting of the Board

June 25, 2016 - Summer Picnic & Member Meeting
 Bill Dean's shed, Mattoon

September 10, 2016 - Regular Meeting of the Board

November 5, 2016 - Regular Meeting of the Board

January 13, 2017 - Winter Convention and Member Meeting, Embassy Suites, East Peoria

Exact location, committee meeting time & other details will be published in the ILICA News and sent to members via mail and/or email.

WORKSHOP CERTIFIES MORE ILICA CONTRACTORS FOR 10-HOUR OSHA

This year's winter workshop was pushed back to mid-March to accommodate the ILICA winter meeting schedule and to allow Ryan time following convention to get something on the books. And for those who haven't heard yet, Ryan has also added a beautiful little girl to his family during this busy time of transition and still managed to secure a facilitator in Bruce Mosier's absence as well as several sponsors for a 10-Hour OSHA and Flagger training workshop.

Bruce, who has always taken care of OSHA training for ILICA, was involved in a mission trip to South America this March and was unable to find a replacement in time. But, after getting references from the Peoria OSHA office, Ryan secured Grey & Associates from Champaign to facilitate the class.

Tom Beyers brought chain saw PPE which was incorporated into the sessions along with a machine walk around, thanks to Mike Yordys' equipment in the parking lot. Now, eleven more ILICA contractors have successfully completed 10-Hour OSHA, making their businesses safer!



ENVISSION
INSURANCE GROUP
Owned and Operated by
Miller Dredge Insurance



Immediately following the OSHA sessions, 16 contractors certified or re-certified for Flagger training, facilitated by Brent Breedlove, making this one of the largest classes yet. Thanks to Brent for continuing to provide this important safety training.

A special thank you goes out to our workshop sponsors, Envision Insurance Group, Prins Insurance and United Fire Group along with Springfield Plastics Inc. Please remember to thank these generous associates for their continued support of ILICA workshops. It is very much appreciated.



SUPREME COURT ENDS CHALLENGE TO THE CHESAPEAKE BAY CLEANUP PLAN

Source: <https://www.washingtonpost.com/news/energy-environment/wp/2016/03/01/>

The Supreme Court has declined to hear a challenge to the Chesapeake Bay cleanup plan, the largest attempt by the federal government and states to rid the pollution from a body of water and to restore its health.

The high court's refusal ends an attempt by the American Farm Bureau Federation to stop the cleanup. The organization argued that the Environmental Protection Agency overstepped its authority in leading the effort because the bay can be managed only by the states that sit in its watershed.

The lower court ruling now stands. In that 2013 decision, U.S. District Court Judge Sylvia H. Rambo wrote that the EPA is within its rights under the Clean Water Act to partner with the six states in the bay watershed to cut the pollution that pours in from sewers, construction developments and chemical and biological waste from farms.

"The ecological and economic importance of the Chesapeake Bay is well documented," she wrote, concluding that "the court endorses the holistic, watershed approach used here. This approach receives ample support in the [Clean Water Act], its legislative history, and Supreme Court precedent."

The question is whether the EPA could now move to clean other massive, multistate water bodies. Impaired waters

have led to fish-killing dead zones and other marine life die-offs for decades.

Critics of the American Farm Bureau Federation's challenge said the group had shown little interest in the bay before the suit was filed in 2011, and they called it a strategic effort to preempt the federal government from regulating pollution that runs off mega-farms it represents into the Mississippi River.

They pointed to a speech by the farm bureau's president, Bob Stallman, to support that claim. "This new EPA approach will not end with the Chesapeake Bay," Stallman said at the group's 2011 convention. "EPA has already revealed its plan to follow suit in other watersheds across the nation, including the Mississippi watershed."

Attorneys general in 21 states joined Stallman when the farm bureau appealed Rambo's decision. The prosecutors, most of them Republicans from as far as Alaska and Montana, filed an amicus brief in support of stopping the EPA's plan.

"If this [cleanup] is left to stand," they argued in their brief to the U.S. Court of Appeals for the 3rd Circuit, "other watersheds, including the Mississippi River Basin, could be next." The appeals judges did not block the plan.

One of the farm bureau's critics,

continued on page 21 ...

PROUDLY MADE IN THE USA



BUCKEYE WHEEL TRENCHERS—AG /INDUSTRIAL

PRO STRINGER TILE TRAILERS

AG CAM CAMERA SYSTEMS

BUCKEYE/LINK SELF-CONTAINED PLOWS

LASER GRADE CONTROL SYSTEMS

DUAL WALL DRAG BOXES/RADIUS CUTTERS

LINK PLOW ATTACHMENTS & UTILITY PLOWS

GPS MACHINE CONTROL

BUCKEYE AUGER BACKFILLERS

MID AMERICA TRENCHERS LLC



Phone: 515-789-2005

375 State St—Dexter, IA 50070

Fax: 515-789-2040

SALES@BUCKEYETRENCHERS.COM

WWW.BUCKEYETRENCHERS.COM

ILICA LADIES PAGE

Source: <http://www.bobvila.com/articles>

5 Ways to Jump-Start Your Garden for Spring



Ready for spring to arrive? So is your garden.

The ground may still be cold, but longer days have already begun to coax your plants out of their winter dormancy. It's undoubtedly early -

there's not a lot of true gardening to do yet - but there are several valuable ways that you can prepare for the busy spring and summer seasons ahead.

1. Assess and Repair

Check your garden for winter damage. Shake off any snow that remains on delicate branches, and clean up any boughs that were broken in storms. Add mulch to areas where your fall application has thinned, and replant any shrubs that were pushed up by frost heave. As you work, try not to walk on muddy areas, as your footsteps will compact the soil.

2. Water

Here's a fair-weather gardening instruction that is also relevant during the cool weeks of late winter and early spring: On sunny days, give your flower beds a good soaking - warm fronts are on the horizon, after all.

3. Prune

With newly sharpened garden tools, prune all dead or diseased branches, not to mention branches whose appearance contrasts with the prevailing aesthetic of your shrub or tree. Avoid cutting any species that bloom early, such as lilacs or azaleas.

4. Fertilize

Compared to plants growing outdoors, your houseplants will return more quickly. Help their growth by dosing your regular spring fertilizer at half strength.

5. Start Seeds

Not everything needs a head start, but if you're itching to get back into the garden, why not experiment with early- and slow-growers like peas, lettuce, carrots and leeks? Now is also the time sit down with a seed catalogue to select and buy all of the varieties you wish to try this year.

5 Spring Garden Favorites to Plant Right Now

The time to dream about your spring planting has passed. Now is the time to get going in the garden. So here are five flowering choices to consider for your landscape. Just remember that no matter what you're planting, it's important to water frequently as the growing season rapidly approaches.



1. HEATHER - Photo: oregonstate.edu

Heathers come in a variety of colors and as an added bonus, they are a big draw for pollinators. Choose your variety of this Scotland native according to the needs of your garden design.

A lower, spreading-type variety is suitable as a ground cover while an upright heather would work wonderfully as a border.

2. ASIATIC LILIES - Photo: mostbeautifulflower.com

Despite their exotic, if not fussy, appearance, Asiatic lilies require no stakes and are remarkably easy to grow. And so long as you provide adequate drainage, they tolerate many soils. Plant your bulbs in a sunny spot sooner rather than later.



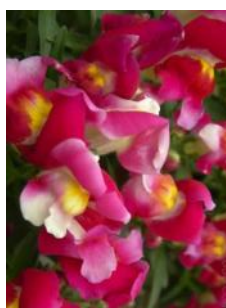
3. GARDENIAS - Photo: thefloweravenue.com



A garden classic, gardenias don't grow everywhere, but if you're in the Southeast, tuck this evergreen shrub near the deck or beneath a window to enjoy its fragrance. For best results, treat your soil so that it maintains an acidic pH between 5 and 6.0.

4. ZINNIAS - Photo: growingthehomegarden.com

Those in warmer climates are able to plant these undemanding annuals under a light covering of soil, one-quarter-inch deep or so. Shorter growing season? Start your zinnia in a peat pot, then in a few weeks, plant the pot directly into the garden. No matter where you live, these cheerful blooms will brighten your garden - and your mood.



5. SNAPDRAGONS - Photo: treesflowers.com

It's a bit surprising that such delicate, vibrant blooms are able to handle a few nights of frost, but as cool-season annuals, Snapdragons may actually be sown before your area's last frost date. Add them to containers, beds, or borders, but prepare yourself to remove spent flowers (or 'deadhead') with some frequency.

OUTSTANDING "FIESTA" LICA CONFERENCE IN SAN ANTONIO

Some places are just more fun than others, and San Antonio Texas was a great place for this year's winter LICA conference. For the most part, the weather was outstanding, especially compared to Illinois, which made it easy to spend hours outdoors exploring the many historic sites within walking distance or enjoying lunch or dinner on the Riverwalk, watching people from all over the world pass by.

The Drury Plaza Hotel was the perfect location for the conference, providing access right onto the Riverwalk from the lower level. And as you can see from the photos below, many LICA members embraced the "Fiesta" theme on opening night. And if a live Mariachi band didn't get everyone in a festive mood, the CNA sponsored a photo booth did, providing many interesting pictures you will find in the 2016 scrapbook!

LICA CEO, Jerry Biuso, is back "up to speed" after his knee surgeries and frankly, walking like a man half his age. Of course, Jerry is already concentrating on Con Expo in Las Vegas next winter, which was a subject discussed in many of the committee meetings in Texas. LICA is providing the earthmoving educational tract again in 2017, so sessions are being actively planned already. A big "Thank You" goes to Jerry, Eileen and Allison for all their hard work making this an informative and enjoyable conference again this year!



(top to bottom, l to r) The Historic Alamo; the very popular San Antonio Riverwalk; Katie Pullin from Case, Jerry Biuso & Maura Dibble, ready to Fiesta followed by; Donna and Bob Clark posing with Jim Jansen & Amber Bosma from Prins; The "festive" Lee & Marie Bunting and Tom & Judy Beyers



(above) Group shot with almost everyone at the Fiesta; our own Mariachi Band; the Illinois LICA contingency, some you can see ... some you can't!

Northland Trenching Equipment, LLC

"We are the largest volume supplier for this type of equipment in the US"



Inter-Drain
Plows & Trenchers

Trimble TRIMBLE GPS SYSTEMS



The Inter-Drain plow, three types, double link, single cantilever, or single link, each in three sizes. Cat, Cummins or Volvo power. Offset available.



The Inter-Drain chain trencher. Four size choices, mechanical or hydraulic chain drive, vertical and offset available. Cummins, Volvo or Cat power.

FULL SERVICE AND REBUILDS

HUGE PARTS INVENTORY

Corporate Office
12929 410th Avenue
Waseca, MN 56093
Phone: (507) 835-4214
Fax: (507) 835-2032

Eastern Division - Indiana
3578 North State Road 59
Brazil, IN 47834
Phone: (812) 835-2900
Fax: (812) 835-2535

Email: nte@hickorytech.net
www.northlandtrenching.com

NORTHLAND Trenching
Equipment, LLC



ENVISION

INSURANCE GROUP

Owned and Operated by
Miller Dredge Insurance

Four Area Locations to Serve You

7150 N. University St.
Peoria, IL 61614
(309) 683-1100

456 E. Main St.
Galesburg, IL 61401
(309) 343-1168

300 E. War Memorial Dr.
Peoria, IL 61614
(309) 685-6606

150 S. Main St.
Morton, IL 61550
(309) 263-2400

- Business & Personal Insurance
- Life & Health Benefits • Bonding



BY-LAWS CHANGES PROPOSED

To be voted on Saturday, June 25th at the summer picnic - Dean Drainage, Mattoon IL

This is the initial notice to all contractor members that changes to the by-laws will be discussed and voted on at the summer picnic set for Saturday, June 25th at Dean Drainage in Mattoon Illinois.

Exact wording along with an explanation of the reason for the proposed changes will be published in the next issue of *ILICA News* as well as details for the picnic and Backhoe Rodeo set for that day. All active members are encouraged to attend!



Since 1923 supplying quality drainage products with service second to no one...

Why Fratco Pipe and Fittings?

Quality and Service. We are 100% committed to offering the best HDPE corrugated pipe and fittings to the market, with a friendly and knowledgeable staff that is dedicated to providing unparalleled flexibility and delivery, ensuring prompt and accurate order filling from our fully stocked yards.



Experience the Fratco Difference....

Members of:



ST. ANNE OFFICE
499 SOUTH OAK ST.
ST. ANNE, IL 60964
(815) 427-8144
(800) 475-8144

www.fratco.com



MT. PLEASANT OFFICE
1600 W. WASHINGTON ST.
MT. PLEASANT, IA 52641
(319) 385-1213



FRANCESVILLE OFFICE
4385 SOUTH 1450 WEST
FRANCESVILLE, IN 47946
(219) 567-9133
(800) 854-7120

Members of:



BOWER'S GREAT LAKES INTER-DRAIN, INC.



WWW.GREATLAKESINTERDRAIN.COM

**YOUR INTER-DRAIN DEALER FOR NEW
AND USED EQUIPMENT & PARTS**

PHONE: 419-547-2379

TOLL FREE: 844-473-2379

SALES@BOWERSGLID.COM



EXCELLENCE BY EXPERIENCE

Saturated Buffers Or Vegetative Subsurface Drain Outlets



There has been a lot of discussion surrounding the Nutrient Loss Reduction Strategy (NLRs) and how various conservation practices can impact this issue in a real way. This article contains information from the Ag Drainage Management Coalition (ADMC) Update from the ILICA convention as well as data from Ruth Book, Illinois NRCS State Engineer, presented at the Illinois Association of Drainage Districts (IADD) conference, in January.



“Saturated Buffers” have been around for a few years now. The first one was installed in a research setting in Iowa by ARS researcher Dan Jaynes, with excellent results. Many people would like to see how this new concept can be adapted to the different landscape settings in Iowa and in other states.

Here’s how it works. A new tile is laid parallel to the ditch, to act essentially as a lateral leaching pipe – a distribution pipe – see Figure 1. That new tile tees into the structure, and the boards in the structure are set so that the tile flow is sent out into the new distribution pipe. Any tile flow that is too much for the distribution pipe to handle just passes over the board and on out to the ditch. Flow from the distribution pipe eventually makes its way to the ditch, too, but it takes longer, and nutrients are removed as it passes through the soil.

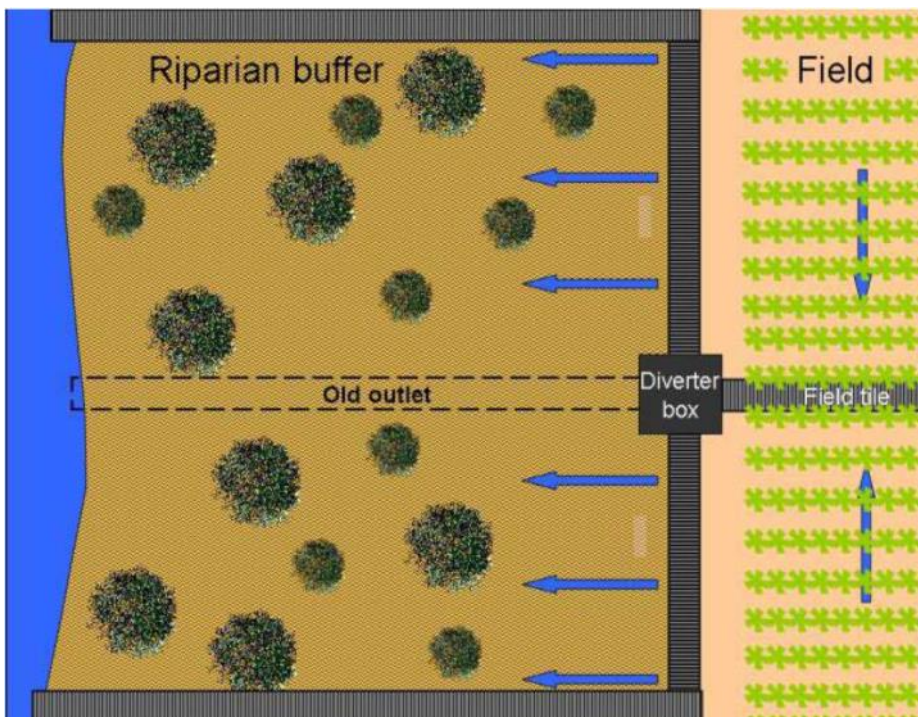


Figure 1: Diagram of a Saturated Buffer. A new tile is laid parallel to the ditch to act as a distribution pipe.

The general concept is quite similar to Drainage Water Management (DWM), which you’ve heard about for some time. But DWM needs very flat land to be cost effective: less than 1% slope. The saturated buffer essentially uses a water control structure very similar to the structure used with DWM or denitrifying bioreactors, to intercept the tile flow just before it enters the ditch, but it doesn’t really matter what the land slope is. You can even do a saturated buffer together with DWM!

USDA has been working with the Ag Drainage Management Coalition (ADMC) to test a few of these out, so you may have seen some saturated buffers in Illinois. The research results are in, and we’re busily working on a new NRCS Conservation Practice Standard.

We’re learning how far away from the streambank the distribution pipe needs to be to avoid bank sloughing.

We’re learning how to size the length and diameter of the distribution pipe to achieve the desired performance. And we’re learning how the soil types affect the feasibility and performance of the saturated buffer. When the new practice standard is ready, Illinois NRCS will begin to offer this exciting new practice as another tool to help reduce nutrient losses in our state.

Demonstrate and Evaluate Saturated Buffers at Field Scale to Reduce Nitrates and Phosphorus from Subsurface Field Drainage Systems

— Mississippi River Basin - Water Management —



PROJECT COLLABORATORS:

Agricultural Drainage Management Coalition Member Companies

Agricultural Drainage Management Systems Task Force

Dr. Dan Jaynes, National Laboratory for Agricultural & the Environment

This material is based upon work supported by the United States of Agriculture, Natural Resources Conservation Service(69-3A-75-11-205) and the Farm Service Agency (AG-3151-P-15-0168). Any opinions, findings, conclusions, or recommendations expressed in this publication are those of the authors and do not necessarily reflect the views of the U.S. Department of Agriculture.

Summary of Findings

Overall Conclusion

When proper site conditions and design considerations are met the Saturated Buffer practice can be an effective method for reducing nitrate transport from subsurface drainage systems.

- The Nitrogen (N) concentrations were less in the buffer than the tile lines in 27 out of 28 field years monitored. Overall the average N concentrations across the buffers indicated substantial N removal in about 17 of the 27 field years. N may have been removed in the other 10 field years as well, but due to inconsistent trends the nitrate removal amount could not be calculated with certainty.
- There was little evidence of Phosphorus (P) removal using the Saturated Buffer practice as implemented in this project. The study revealed that only 8 out of 15 field years dissolved P exceeded .1mg/L (EPA stream limit recommendation). If the Saturated Buffer is proved to reduce dissolved P, there may not be as much available in the tile lines to show significant removal amounts of P.
- Ditches and streambanks profiles were studied over a three year period. There was no evidence of ditches/streams with stable banks experiencing increased sloughing or other stability issues due to the saturated buffer practice.
- The project provided valuable insight into the site selection process. 15 sites were selected and instrumented across the Midwest. Five of these sites were found unsuitable for saturated buffers due to coarse soil layers in the soil profile. 1 site was susceptible to flooding so measuring performance was problematic. 1 site measured minimal flow to the buffer indicating lack of tile system feeding the main line or short circuiting occurring at unknown point. This siting information is critical in the future implementation of the practice.
- A bioreactor utilizes a woodchip trench to provide a carbon food source for the denitrifying microbes. A Saturated Buffer uses the carbon already present in the soil as the food source. This allows for potentially similar nutrient removal to occur without the cost of digging the large trench and filling with wood chips. The greatly reduced cost of implementation could prove to be significant in allowing this practice to receive widespread implementation.
- The N removal costs with Saturated Buffers were similar to other edge of field practices and less than Field practices. The costs ranged from \$0.55 to \$4.64/lbs -N with an average of \$2.13/lbs -N removed. This compares to \$1.38/lbs -N for denitrification bioreac-

Demonstrate and Evaluate Saturated Buffers At Field Scale: Summary Of Findings

ADMC
Agricultural Drainage Management
Coalition

Cont.

tors, \$5.06/lbs – N for nitrate removal wetlands and \$3.21/lbs – N for rye cover crops (tile drained acres).

Source - *IL Nutrient Loss Reduction Strategy*

- Soil samples were collected at all sites near the beginning and end of this project. There were no detected changes in soil organic matter or soil P that were attributable to the Saturated Buffer practice.

Source: Steve Baker, ADMC Update, 2016 ILICA Convention

- Management of Saturated Buffer sites where the field elevation was sufficiently higher than the buffer elevation required little or no management of the stop logs in the structures. Sites where the field and buffer elevations were similar required slightly more management by the landowner. The stop logs had to be adjusted much like a Drainage Water Management system.



The Extension Connection

The Extension Connection will return in the next issue of the ILICA News!

National LICA voted to become a Gold Level sponsor of ADMC at this year's convention in San Antonio, adding a National LICA representative to the ADMC Board. Illinois LICA and several other state chapters are also Silver Level members, allowing those state chapters to have a representative on the board as well.

ADMC
Agricultural Drainage Management
Coalition

"Thank you" to the ADMC for their continued research on many of the best practices for soil conservation and water quality being considered today.



Quality Products...Unequaled Service

Over 50 years of manufacturing and supplying corrugated metal pipe and related highway drainage products.

Havana, IL Office (309) 543-2271
Monmouth, IL Office (309) 734-4113
Corporate Office (800) 735-7312

Email: sales@metalculverts.com
www.metalculverts.com

Precision Intakes
Full Line of
Surface Water Intakes

- 8" & 10" riser with patented 8" & 10" combination Tees. Also 6" square & round risers with patented reducing Tee.
- Constructed of heavy-weight, high-density polyethylene.
- Parts highly adjustable & interchangeable with others on the market.
- Orifice plate placed at tee level or at ground level.
- Exclusive locking device on each part.
- User Friendly-Priced effectively.
- Adaptor available to repair old metal or broken intakes.

Type II Riser - 6" & 10" Trash Baskets with marker cup features

PATENTED REDUCING TEE

Why inventory 2, when 1 serves both!



"Dealer Inquires Welcome"

PRECISION INTAKES

Norm & Coretha Rozendaal (800) 932-7611
2064 Republic Ave West, Monroe IA 50170 (641) 259-2651
www.precisionintakes.com Fax (641) 259-3218

IMPORTANT UPDATE ON 2016 GOLF OUTINGS

After ILICA's multiple building projects last summer, it was no wonder that the September golf outing at beautiful Pine Lakes golf course in Morton saw a low contractor turnout. And as discussions actively take place this spring regarding more building projects for this year, this topic was one that had to be discussed as well.

As most know, these fundraisers were instituted after years of conservation expo "drought". State cost share money had dried up and there were no projects to be found, so Jerry's idea of a golf outing fund raiser just made good sense. However, the drought is over and several organizations are now actively involved in conservation projects that need ILICA's expertise.

Of course, ILICA has outstanding sponsors for both area golf outings and every outing, meal and hole sponsor has our sincere appreciation for their commitment to the organization. The board asked that the membership be informed as soon as possible of the decision to suspend the September Area 3 golf outing for this year. And although there was some talk about alternating the areas year to year, staying with the June scheduling, there was not a long term decision made beyond 2016.

The Area 6 outing was rained out in a big way last year, but thanks to the generosity of our outstanding supporters, the fund raiser was still a huge success. June is a good time for our contractors to take a break so Bill Dean will host the Area 6 golf outing on Friday, June 24th at Meadowview in Mattoon. It was also decided that the summer picnic and member meeting would be combined with the June golf outing so on Saturday, June 25th, Birkey's will have a Backhoe Rodeo set up at Bill



LEADING & EDUCATING

Prinsco has been an industry leader for over 35 years. We've also created online tools to help educate our customers and communities about the benefits of responsible water management practices! Go to our YouTube.com/PrinscoInc to watch and share our "Agricultural Water Management 101" video and find other valuable resources.

SINGLE-WALL **DUAL-WALL** **FITTINGS** **CONTROLLED DRAINAGE** **OTHER PRODUCTS**

WATER MANAGEMENT SOLUTIONS SINCE 1975

11 manufacturing facilities in the U.S. & Canada

800.992.1725 prinsco.com

PRINSCO
ENGINEERED WITH INTEGRITY™

Dean's place where the summer annual meeting will also be held. The Area 6 golf outing registration and sponsor form will be published in the next issue of this newsletter along with more information on the picnic and meeting.

Area 3 supporters, please contact Ryan at the ILICA office to find out how you can still participate, should you chose to. From the very first year, your dedicated support proved ILICA could sustain itself, regardless of the circumstances, for which you have the associations deepest gratitude. Of course, ILICA will look to our contractors and associates for help on this summers' building projects so there will be other opportunities to show your support.

Please save these dates in June for a fun and informative weekend. After chasing that little white ball around the course, plan on staying for the backhoe rodeo on Saturday and get the latest information on the summer building projects, which will be a very hot topic at the meeting.

2016 COMMITTEE MEMBERS

Associate

Brad Baker, Chair - Spfld Plastics
 Mark Baker - Spfld Plastics
 Chad Nicholson - Fratco, Inc.
 John Pogge - Prinsco, Inc.
 Dave Randolph - ADS

Auditing

Bill Dean, Chair
 Steve Anderson
 Ron Masching

Awards

Bill & Bev Dean, Chair
 Bill & Janet Doubet
 Lori Kennedy

Budget

Lee Bunting, Chair
 Tom Beyers
 Grant Curtis
 Dan Day
 Bill Dean

By-Laws

Stuart Anderson, Chair
 Lee Bunting
 Bill Doubet
 Stan SeEVERS
 Joe Streitmatter

Certification

Tom Beyers, Chair
 John Haile
 Wayne Litwiller
 Ron Masching
 Prof. Kent Mitchell, retired U of I
 Stan SeEVERS

Certification Board

Tom Beyers, Chair
 David Kennedy
 Wayne Litwiller
 Ron Masching

Convention

Eric & Angela Layden, Chairs
 Janet Burtle-Doubet
 Grant & Lindsey Curtis
 Greg & Jennifer Furkin
 Kristin Kutemeier

Devotions

Jean Davis, Chair
 Steve Anderson
 Janet Burtle-Doubet
 Norm & Coretha Rozendaal



Education

Brent Breedlove / Eric Layden
 Co-Chairs
 Brad Baker
 Tom Beyers
 Richard Cooke: Univ. of Illinois
 Grant Curtis
 Mike Yordy

Executive Committee

Tom Beyers, Chair
 Ryan Arch, Exec. Director
 Lee Bunting, V.P.
 Grant Curtis 1st V.P.
 Bill Dean, Treasurer
 Dave Haag, Past President

Golf Outing

Wayne Litwiller/Bill Dean -
 Co-Chairs
 Jerry Biuso
 Brian Brooks
 Norm Kocher

Headquarters

Norm Kocher, Chair
 Steve Anderson
 Mark Baker
 David Haag
 Ron Masching



Industrial & Business Relations

David Kennedy, Chair
 Dan Day
 Bill Dean
 Wayne Litwiller
 Mike Yordy

Insurance

Dan Day, Chair
 Lori Kennedy
 John McCoy
 Jackie Streitmatter

Ladies

Judy Beyers, Chair
 Marie Bunting
 Janet Burtle-Doubet
 Marsha Haag
 Lori Kennedy
 Cathy Masching
 Veronica SeEVERS

Legislative

Steve Anderson, Chair
 Tom Beyers
 Lee Bunting
 Bill Doubet
 Norm Kocher
 Joe Streitmatter
 Mike Yordy

Long Term Planning

Steve Anderson, Chair
 Stuart Anderson
 Dan Day
 Bill Doubet
 Ron Masching

Membership

Wayne Litwiller / Norm Kocher,
 Co-Chairs
 Steve Anderson
 Mark Baker
 Tom Beyers
 Brent Breedlove
 Brian Brooks
 Dan Day
 Scott Day
 Bill Dean
 Bill Doubet
 Eugene Glueck
 Ron Masching
 Larry Rhodenbaugh

Nomination

Joe Streitmatter, Chair
 Stuart Anderson
 Brian Brooks
 Dan Day
 Ron Masching

On-Site Waste

Wayne Litwiller, Chair
 John McCoy
 Larry Rhodenbaugh

Picnic

Steve Anderson / Bill Dean

Publicity

Bill Doubet, Chair
 Mark Baker
 Wayne Litwiller

Safety

Dave Haag, Chair
 Brent Breedlove
 David Kennedy
 John McCoy

Show & Other Income

Bill Doubet, Chair
 Brent Breedlove
 Brian Brooks
 Dan Day
 Bill Dean
 David Kennedy
 Joe Krupps
 Eric Layden
 Wayne & Wes Litwiller
 John McCoy
 Jon SeEVERS & Joe Streitmatter

IL CORN PRECISION CONSERVATION PROGRAM RECEIVES NATIONAL GRANT

Source: <http://www.ilcorn.org/media/daily-update>:
Feb 12th, 2016 by: Tricia Braid

BLOOMINGTON, Ill.—A precision conservation program geared to get more farmers engaged in best management practices that protect water quality and prevent nutrient loss has been awarded a multi-million dollar grant from the U.S. Department of Agriculture. The grant application was led by the Illinois Corn Growers Association.

The Precision Conservation Management (PCM) program was submitted by the Illinois Corn Growers Association (ICGA) to the USDA for consideration for funding under the agency's Regional Conservation Partnership Program. The funding announcement was made at the ICGA offices today by Robert Bonnie, the USDA Under Secretary for Natural Resources and Environment. On-hand to accept the funding investment on behalf of ICGA was the association president, Jeff Jarboe, a family farmer from Loda, IL.

“With this grant funding from USDA, Illinois farmers will really be able to move the needle on making those incremental, voluntary improvements that help improve soil quality, manage our nutrients, and produce a high-value crop,” Jarboe said. “Best of all, we can do all of these things that make sense for the farm while protecting the environment for all Illinois families, including our own.”

“PCM is an innovative public-private partnership service program created by farmers, for farmers, to address the need for greater adoption of conservation practices,” explained Jarboe. “The idea is simple: we believe that the main reason that farmers elect to NOT implement conservation practices on their farms is due to uncertainty about how it will affect their families' financial stability. The PCM program combines farmers' financial goals with their conservation management interests.”



The PCM program is designed to achieve 4 main priorities:

1. Promote adoption of conservation practices by providing farmers with an informed assessment of financial risks and benefits resulting from adoption of new practices;
2. Encourage participation in conservation programs by providing data entry and paperwork submission services, data management, and report generation serviced to meet the requirements of Natural Resources Conservation Service and Field to Market;
3. Track, analyze, and demonstrate changes in farmer practices by providing aggregated and anonymized data for analysis of conservation practices from agronomic and economic perspectives, including analysis at a watershed or millshed scale; and
4. Achieve natural resource benefits on the farm and over a large-scale, regional basis that improve crop productivity, water quality, soil health, and help avoid the need for regulatory requirements.

Although ICGA originated the PCM program, its success depends on a larger partnership with more than 30 other organizations. Cornerstone partners in the PCM effort include the Illinois Corn Marketing Board through an investment of corn checkoff dollars, the University of Illinois, Farm Business Farm Management, and Heartland Science and Technology Group.

“PCM can't happen without Illinois corn farmers, but farmers need the help and expertise of researchers and financial specialists to be able to make the best decisions for their farms,” said Jarboe. “The list of PCM partners embodies the best opportunities for farmers to engage with experts that will help us continue to make incremental improvements on our farms.”

More information about the PCM program can be found on the IL Corn website at www.ilcorn.org/pcm.

PARTNER LETTER FROM LAURA GENTRY

Dear RCPP Partners,

The RCPP press release last Friday at the IL Corn office in Bloomington was a great success and we were honored to be awarded **\$5.3 million for the Precision Conservation Management program**. Presenting the award was U.S. Under Secretary for Natural Resources and Environment, Robert Bonnie. The event was well-attended by our RCPP Partners: agricultural stake holders, State agencies, agricultural technology companies, NGOs, and University administration were all present. The media turnout was outstanding for a Friday afternoon. [Thank you to all of our local media that attended.](#) We had TV news stations, radio stations, and printed media present to report the event.

Under Secretary Bonnie's speech announcing NRCS's support for the PCM program was a strong testimony to the potential for this program to mobilize farmers to effectively, efficiently, and profitably adopt more best management practices. A quote from the Under Secretary's speech: ***“I think the work you all do here is going to have a ripple effect potentially across the country,***

in terms of how we address this issue [of nutrient loss] and do it in a way that works for producers' bottom lines and for the environment at the same time.”

In the coming weeks, we will meet with IL NRCS state staff to negotiate the final terms of the proposal and create timelines, goals, and deliverables for our RCPP commitments. This is an amazing opportunity for the Precision Conservation Management program to accelerate and extend the capacity of our program to assist farmers with adopting best management practices on their farms.

I look forward to working with each of you and we will be in contact over the coming weeks and months to discuss your role in the program. Feel free to contact me anytime. Again, many thanks for your support for Precision Conservation Management. We couldn't have gotten this far without you!

Sincerely,

Laura Gentry and the entire staff of the Illinois Corn Growers Association and the Illinois Corn Marketing Board

FEATURED BENEFIT: CONTRACTOR CLASSIFIEDS!



CONTRACTOR CLASSIFIEDS FOR SALE/WANTED



FOR SALE

**3" - 4" Tile Boot with Blinders
Complete 10" Chain & Cutters
Trailer
Fits 2500 Hydramaxx**

**Call Bill @ (309) 360-9667
for more detail**

LOOKING TO BUY:

Vermeer 600D Tiling Machine (or similar)

Contact Miles Warren @ 618-676-1176 for more information

Advertising in the ILICA News is a benefit of associate membership but ILICA Contractors can advertise things like used equipment, attachments, trucks etc. that they want to buy/sell as another benefit of membership. There are also a lot of National LICA benefits that are featured in each issue of the *ILICA News*, but consider these benefits that Illinois LICA provides beyond that!

- ✓ **FREE Registration at the Annual ILICA Convention for NEW Contractor Members**
 - ▶ Educational Sessions
 - ▶ 2 Day Trade Show
 - ▶ Meals & Activities
- ✓ **2 Workshops each year: Safety & Other topics in Feb-March; Drainage in August**
- ✓ **Annual NRCS - ILICA Contractor meeting in the spring to discuss cost share programs and how NRCS & ILICA Contractors can get more conservation practices on the ground**
- ✓ **Annual Summer Picnic & Member meeting which often includes hands-on equipment demos, backhoe rodeos or other fun stuff along with the business meeting and a great meal.**
- ✓ **Participation in building projects for the chance to learn new practices or methods from other ILICA contractors**
- ✓ **Access to a wealth of resources through the ILICA newsletters & directory as well as directly from the ILICA office with just an email or phone call.**

Contact the ILICA office today to find out what you're missing! (309) 446-3700 or email: Ryan@illica.net



**2016 Annual NRCS - ILICA Meeting: 10 am - April 5, 2016
2118 W. Park Court, Champaign, IL 61821**

Contact the ILICA office for more information, if you would like to attend and/or if you have questions to add to the meeting agenda. (309) 446-3700 or Ryan@illica.net

CALENDAR OF EVENTS

Illinois

May Board Meeting - May 14, 2016

Exact Location TBA

Springfield or Decatur area - tentatively

Committee meetings - 10 am - 1 pm

Board Meeting - 2 pm

Area 6 Golf Outing - Friday June 24, 2016

Meadowview Golf Course - Mattoon IL

Summer Picnic, Member Meeting & Backhoe Rodeo

Saturday, June 25, 2016

Dean Drainage - Mattoon IL

Hotel Block at Quality Inn - Mattoon, IL

National

LICA Summer Convention

InterContinental Kansas City at the Plaza

401 Ward Parkway, Kansas City, MO

July 18 - 23, 2016

Hotel Block available Now!

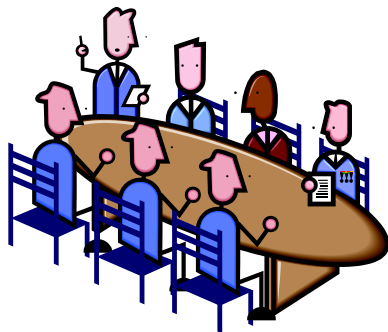
Board of Directors Meeting

Saturday, May 14, 2016 - 2 pm

(May 7th is Mothers' Day weekend)

Exact Location TBA

Springfield & Decatur being solicited at this printing.



Meeting notices with complete details will be mailed from the ILICA office well in advance of the meeting.

Committees will meet 10 am (or 11) to 1 pm depending on how many need to meet.

The meeting notice will be posted on the website, www.illica.net, as soon as details are confirmed.

ADVERTISERS INDEX

Agri Drain Corp	4
BM Truck Equipment	3
Bower's Great Lakes Inter-Drain, Inc.	11
BRON	2
Brown Bear Corp	23
Envision Insurance Group	10
Fratco, Inc.	10
JCG Midwest	2
Martin Equipment of Illinois	24
Metal Culverts Inc.	14
Mid America Trenchers LLC	7
Midwest Plastic Products	23
Mike Cooks' Soil & Water Mgmt. Systems ...	2
Northland Trenching Equipment, LLC	9
Precision Intakes Ltd	14
Prins Insurance Inc./United Fire Group	24
Prinsco	15
Roland Machinery Co.	24
Schlatter's	5
Springfield Plastics Inc.	24

URGENT

**Last Call for
Membership Dues!**

**2016 Directory is in progress so if
you haven't written that check yet,
PLEASE sit down and do it today!**

**We Don't Want To
Lose You!**

SAFETY ON WALKING/WORKING SURFACES

Cont.



Pay Attention to Your Surroundings

Get in the habit of looking over your shoulder and looking both ways before crossing an intersection. If you are operating powered machinery, slow down at intersections and sound the horn when you approach blind areas. If powered industrial trucks are in your area and unattended, be careful about where you step so you don't trip over forks and other equipment that is on the ground.

boxes of materials too high to avoid tip-over hazards. Also, heavier boxes should not be placed on top of lighter boxes for the same reason - even for short periods of time. Whatever materials are needed at your site, stacking them properly will help prevent tip or trip hazards.

Passageways and Other High-traffic Areas

Aisles and passageways are used by both workers and motorized vehicles. Combining pedestrians with motorized vehicles can be dangerous when safety procedures are not followed. When you are walking anywhere in the workplace, be mindful of where you are walking and what traffic is in the area.

Target On Safety: - From Prins Insurance Zywave LICA Portal

Keeping Your Area Free From Hazards

Some of the most serious safety hazards found in walking or working areas are due to poor housekeeping. As you look at your work area, keep the following issues in mind.

- Sweep work areas so dust and debris do not accumulate and create a trip or slip hazard.
- Clean up spilled materials immediately.
- Don't let trash overflow in work areas.
- Don't store materials in passageways.
- Always be mindful of powered equipment operations. As a pedestrian, watch for traffic. As an operator, always be aware of workers and civilians in the area.
- Never store materials near ladders or machinery.



Summary

Walking and working surfaces can cause many different and serious injuries when safety precautions are not followed. The more we pay attention to the hazards in our work area, the better chance we have at preventing injuries and keeping ourselves safe and healthy on the job.



SUPREME COURT ENDS CHALLENGE TO THE CHESAPEAKE BAY CLEANUP PLAN

CONT.

Chesapeake Bay Foundation President William Baker, described Monday's outcome as historic. "Everyone who cares about clean water can breathe easier now that the Supreme Court has let stand the lower court decision that Chesapeake Clean Water Blueprint is perfectly legal under the federal Clean Water Act."

Baker renewed his call to the farm bureau and others that joined its challenge, such as home builders and chemical companies, to put aside their differences and work to clean the nation's largest estuary. But his final comment could serve to stoke them. "Our collective ... efforts ... can be a model for other waters worldwide."

Farmers worry that regulations such as those in the bay plan could cut their profit margins or run them into debt. The cleanup placed the bay on a pollution diet that called on farmers to spend tens of thousands of dollars to install barriers to fertilizers, soil and manure that poured off farms with storm water into streams, creeks and rivers that lead to the bay.

Municipalities also complained about requirements that called on them to limit sewer overflows during heavy rain that sent human waste awash in storm water into tributaries to the

Chesapeake. Those fixes will cost tens of millions of dollars to cities such as the District and counties such as Anne Arundel.

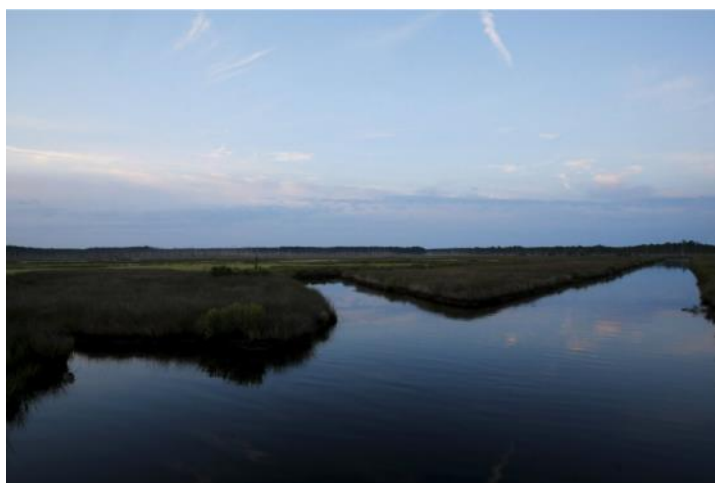


Photo credit: The sky is reflected on Parsons Creek after sunrise in Madison, Md., in August. The Chesapeake Bay estuary is the largest in the United States, at a surface area of 4,480 square miles. (Jonathan Ernst/Reuters)

Join Us in KC!

2016 National LICA Summer Meeting



Book Your Room Today!

We have secured a discounted rate of \$135 (plus tax) per night. The cut-off date for this discounted room rate is **June 27, 2016**, but make your reservations early ... the block might sell out! The rate is available for three days before and three days after the event, in case you'd like to come early or stay late!

All of the rooms in the block are "Superior Rooms" and have a view of the Plaza, coffee maker and coffee, hair dryer, refrigerator, work station, and bathrobes. Check-in time is 4:00pm and check-out time is 11:00am. Arrangements for a late check-out can be made, once the guest is registered. A \$75 charge may apply. Cancellations must be received 24 hours prior to arrival.

To make reservations, call 866-856-9717 and tell them you're with the LICA Summer Meeting. Or, you may make your reservations online at www.kansascityic.com. Enter your arrival and departure dates and click "check availability." On the left hand side scroll down, click on group code (LIC), then click "apply." The group rate will appear, you will need to choose your room type and then continue booking your reservation.

July 18-23, 2016
InterContinental Kansas City
at the Plaza
(401 Ward Parkway; Kansas City, MO)



Celebrating
75 Years of Stewardship!

Some Highlights ...

Tuesday & Wednesday Pre-Tours

Steamboat Arabia
 KC Waterworks Construction Project
 Frontier Justice Shooting Range

Thursday & Friday

Education Classes
 Associate's Night
 Business Meetings

Saturday

Caterpillar Equipment Rodeo and BBQ
 LICA Cook-Off!

And more ...

so watch your mail for details!



WE GO TO GREAT LENGTHS

Farmers and contractors count on us for millions of feet of high quality drain tile.

- 3" - 48"
- Single & Dual Wall
- Fittings for All Sizes
- **FREE DELIVERY** within 300 miles

920-674-3332 | www.draintile.com | Jefferson, Wisconsin | Plainfield, Iowa

Self-Propelled Brown Bear Auger Backfillers



4 Sizes To Choose From

- **Model 200C**
@ 150hp Tier III Cummins
- **Model 300C**
@ 190hp Tier III Cummins
- **Model 400C**
@ 250hp Tier III CAT
- **Model 500C**
@ 350hp Tier III CAT

- ~ 10' to 14' Wide Auger Head Sizes ~ All-Wheel Drive and Selectable All-Wheel Steer
- ~ Multiple tire size and style's to match your needs

Contact: sales@brownbearcorp.com
or visit: www.brownbearcorp.com



IT'S NOT JUST OUR PIPE
THAT'S FLEXIBLE



WE ADJUST TO YOUR NEEDS:

- ▶ Order accuracy
- ▶ Timely delivery with our own fleet of trucks
- ▶ We don't have customers. We have relationships.



Springfield Plastics, inc.
800-252-3361 • www.spipipe.com

Manufacturing 100% Virgin Resin Farm Drainage Pipe and Peace Of Mind

MARTIN
E q u i p m e n t



400 W Martin Dr 2384 J David Jones Pkwy #6 Terminal Road
Goodfield, IL Springfield, IL 62707 Peru, IL 61354
(309)925-2502 (217)528-4347 (815)224-4711

887 US Route 45
Tolono, IL 61880
(217)485-6755

3720 85th Ave W
Rock Island, IL 61201
(309) 787-6108

**ROLAND
MACHINERY CO.**

www.rolandmachinery.com

KOMATSU



Contact the salesman in
your county for all of you
equipment needs.



**Unearth
your potential.**

Protect your tomorrow.

We want to help you unearth your potential by ensuring you have the coverages, service and pricing you need.

Find an independent UFG agent on ufgins.com, or contact Prins Insurance, Inc. at 800-831-8545.

