



Land Improvement Contractors Of America · Illinois Chapter

November - December 2010

Bill Dean
Chairman of the Board

Steve Anderson
President

David Kennedy
Vice President

David Haag
First Vice President

Janet Burtle-Doubet
Secretary

Forrest Davis
Treasurer

Directors

Brian Brooks
Dave Hurst

Stuart Anderson
Joe Streitmatter

Bill Doubet
Mike Yordy

Eric Layden
John McCoy

Brent Breedlove
Forrest Davis

Scott Day
Jon SeEVERS

Neal Barnes
John Barttelbort

Tom Beyers
Norm Kocher

Janet Burtle-Doubet
Executive Director

Upcoming Events:

2011 Annual Meeting & Conv.

Jan. 13 - 15, 2011

Safety Week Workshop

Feb. 8 - 11, 2011

Erosion Control Workshop

March 3 - 4, 2011

2011 WINTER ILICA CONVENTION AND MEMBER MEETING! (pages 6 - 9)



HIPPIE

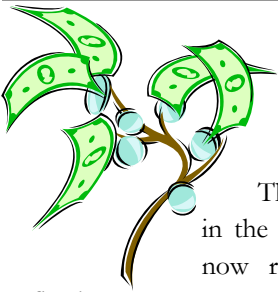


Also Featured Inside

Safety Week Workshop Agenda & Registration (pages 14 - 15)

November Area Member Meeting Series (page 12)

Return To: Illinois LICA
P.O. Box 474
Brimfield, IL 61517



2009 CWG SAFETY DIVIDENDS MAILED WITH 2011 DUES NOTICES

The Illinois LICA members participating in the CWG/LICA insurance program have now received their 2009 safety dividend, reflecting a 10% return on premiums paid. A check for more than \$61,500 arrived at the ILICA office in mid-November and was distributed to several members at the same time as the first dues notices were mailed.

As most are already aware, 2008 was the only time in the program's 10 year history that a dividend was not realized by participants, however, the 10% return for 2009 is a real benefit for those in the program. Amounts sent to ILICA members range from a few \$100 to over \$10,000 and in most cases covers the cost of annual dues.

For those who haven't looked into the program yet, coverage includes Inland Marine, General Liability, Automobile and Property Enhancement policies. Many of our insurance associates can provide a quote for this cooperative program for anyone interested in seeing if the program can be a benefit to your business.



Who is eligible for this program?

First and foremost you have to be a member or associate member of LICA. Second is you have to be tied into the business of moving dirt, rock or other materials. Associates that sell to these contractors or perform services are also eligible for this program. Third you have to be located in one of these 8 states: Iowa, Missouri, Illinois, Wisconsin, Indiana, Kansas, South Dakota, and Minnesota. It doesn't matter if you are a one man operation or have fifty employees. This insurance program is designed for your dirt moving needs!

Time for New Equipment? Choose Roland

Reliable Equipment

- Manufactured to withstand any environment

Responsive Service

- Roland provides service on the job site or in their state-of-the-art facilities

KOMATSU

Call the Roland Location nearest you today!

Bolingbrook 630-739-7474	Carterville 618-985-3399	Marengo 815-923-4966
Palmyra 573-769-2056	Springfield 217-789-7711	www.rolandmachinery.com

Agri Drain CORPORATION

Your Partners in Water Management

We offer America's most complete selection of water management products for wetlands, ponds, lakes, controlled drainage, and sub surface irrigation. Along with tools, survey and safety equipment, and many hard to find items.

For a FREE catalog or to place an order—Call
1-800-232-4742

Wetland Water Level Control Structures

P.O. Box 458 • 1462 340th Street • Adair, Iowa 50002
Fax: 1-800-282-3353 • Email: info@agridrain.com

www.agridrain.com

The ILICA News



Editor / Advertising Manager
Janet Burtle-Doubet

Chairman of the Board
Bill Dean, Mattoon

President
Steve Anderson, Marseilles

Vice President
David Kennedy, Colfax

1st Vice President
David Haag, Kempton

Secretary
Janet Doubet, Williamsfield

Treasurer
Forrest Davis, Manito

Educational Advisor
Professor Richard Cooke
University of Illinois

The *ILICA News* is the official publication of Illinois Land Improvement Contractors Association, Inc. at 118 E. Knoxville St., Brimfield, IL 61517. (309) 446-3700.

Subscription price is \$25.00 per year, issued bi-monthly: Jan.-Feb.; Mar.-Apr.; May-June; July-Aug. Sept.-Oct.; Nov.-Dec., and includes one annual directory.

FEATURES

- 2009 CWG Safety Dividends Mailed.2
- Nat'l LICA To Discontinue Term Life Benefit 4
- 2011 ILICA Annual Convention Schedule & Details 6 - 7
- 2011 ILICA Annual Convention Exhibit Layout & Registration.8 - 9
- Area Member Meeting Takes On A Different Format11
- ILICA Member Meeting Series Continues. 12
- Organic EQIP Options13
- 2011 Safety Week Workshop Agenda & Registration 14 - 15
- 2011 Farmers Almanac Weather Predictions22

COLUMNS

- Board Meeting Notice3
- Presidents Message4
- New Members 5
- Contractor's Classifieds. 5
- ILICA Ladies Page 10
- 2010 Committee Members. 16
- Member Application17
- ILICA Benefits18
- Advertisers Index 19
- Calendar of Events19
- University of IL - Extension Multi County Directors Announced. 20
- Safety Feature: Winter is Coming: Slips, Trips and Falls 21

The LICA Creed



Land, the foundation of the Nation
 The basis of all wealth
 The heritage of the wise
 The thrifty and prudent
 The poor man's joy and comfort
 The producer of food, fiber and fuel
 The basis of factories
 The foundation of banks

All that man builds is from the land. We often take it for granted or even abuse it; And yet many, unthinkingly and unknowingly pass the land by. What man does with the land will be the deciding factor of his survival.



Meeting Notice

January 14, 2011

**Doubletree Hotel & Conference Center
Bloomington, IL**

Board of Directors - 1:30 pm

Members Meeting - 2 pm

See map and directions on page 19



PRESIDENT'S MESSAGE



Greetings Readers,

Greetings to everyone. Hard to believe it is November already and the crops are in, the fall tillage is done, (which by the way is such a pain for those of us that have work to do in those fields) and it is still dry out there. It has been a good one for getting the work done. Now with the onset of standard time and these shorter days, it may only add to the pressure of trying to catch up with all those calls of "when you going to get here?"

Also, it's time once again for fall member meetings, though there are only two this year. The first was a joint one just across the river with Missouri and then once more down in Mt Vernon. Hopefully those in the area are able to attend with the earlier sunsets we now dread or enjoy depending on your appetite for work. It is my feeling that these meetings can become very much the life blood of this organization by both bringing a local presence and a new member draw. Relationships are the skeleton of any organization, the structure that holds it together or the reason it can fall apart.

As I move into the last couple months of my term as president and get ready to pass the gavel, this is an area that as an organization, we can start these meetings in all areas on a

regular basis. They can begin as nothing more than gathering for a cup of coffee somewhere. The point is that they have to begin, for until you have movement there can be no momentum gained. Just like when you are sitting on your machine, engine running, there is all that potential power but it doesn't get a thing done until you put it in gear. Let's get our hand on the shifter and give it a push.

With that thought in mind I would like to take this time to thank with much appreciation all those that have made this job as president much easier than it could have been. Thanks to all committee members and chairs who really do all the work; thanks to all the volunteers that have helped on projects who pitched in and just got it done; the membership committee and all the leg work they have done beating the bushes to show contractors the value of being a member. And thanks to the Executive Director for all her work above and beyond the job description.

Everyone, get your registration in for the convention in Bloomington this January and get ready to take advantage of its rewards. I hope to see many new faces and all of the familiar ones as well.

Steve Anderson, President



NATIONAL LICA TO DISCONTINUE TERM LIFE BENEFIT, BUT...

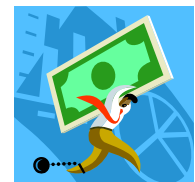
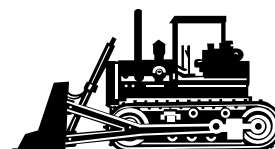
At the July National Board meeting in Peoria, the Board unanimously voted to discontinue the term life insurance program, effective January 1, 2011. The cost of the term insurance has continued to increase and thankfully, few use this benefit.

However, they are always seeking additional LICA benefits that can immediately impact our members businesses. Recently they announced a special introductory offer with the National Equipment Register (NER), offering a **30% discount** to LICA members that register by November 30th, 2010 as a member of NER. If you register after that date it, LICA members will receive a 20% discount. LICA members can register



their equipment on the NER **HELPTTECH** database at <http://www.ner.net>.

Since 2001 NER has been developing comprehensive databases of equipment ownership, theft reports and machine identification characteristics. NER's services have assisted law enforcement in recovering millions of dollars of heavy equipment & greatly increased the risk of arrest for thieves.





NEW MEMBERS

Active Contractors

Mark Komnick
Komnick Excavating, LLC - New Berlin

John Hoerr
D.A. Hoerr & Sons, Inc. - Peoria

John Howerter
Howerter Bulldozing - Smithfield

Associate Members

HD Supply Waterworks - Washington

Ag-Land FS, Inc. - Tremont

Thank You!

STADEL ELECTRONICS LASERS

Authorized Service and Sales for Laserplane-Trimble
Also servicing most other models

**SOLVING YOUR LASER PROBLEMS FOR
OVER 30 YEARS**

Call anytime
815-777-0193

Tom Stadel
5928 W. Stagecoach Trail
Galena, IL 61036

CONTRACTOR CLASSIFIEDS FOR SALE



(12) 2' x 360' 6 oz non-woven filter fabric rolls; great for septic trenches or tile jobs - \$60 per roll

(2) 4' concrete manholes \$600 per OBO
(1 with lid, 1 with 2 foot ring (riser))

Contact Brent Breedlove for more information

(309) 696-9992 or at btlove06@casscomm.com

Heiser Insurance & Financial Services

At Continental Western Group, business insurance is what we do; period. Our single focus is to provide our customers with the business insurance coverage they need today and in the future. Continental Western Group is the Illinois **LICA endorsed carrier** for property and casualty insurance. Contact Tim Neuhauser at Heiser Insurance at 1-800-727-9775 or Continental Western Group directly at 1-800-235-2942 for more information.



Period!

Continental Western Group

www.cwgins.com

A BERKLEY COMPANY SM



2011 ILICA Convention Schedule January 13 - 15, 2011 Doubletree Hotel - Bloomington, IL



"Groovy" Early Bird Reception

Wednesday, January 12th

- 2:30 pm - Convention Committee meet with Hotel Staff
- 3:15 pm - Convention Committee
- 5 - 6:30 pm - Exhibitor Set up
- 5:15 pm - Budget Committee
- 6:30 pm - Dinner at Alexanders' Steak House



Thursday, January 13th

- 8:00 pm - Registration/Cont. Breakfast
- 8:00 am - noon - Exhibitor Set up
- 8:30 am - 7:30 pm - Exhibits Open
- 9:00 - 10:15 am - Quickbooks Overview** - Roger Biddle
- 10:30 - 11:45 am Excel Basics** - Jennifer Furkin
- 12:00 - Lunch
- 12:30 pm - Agency Reports
- 1:30 - 2:30 pm - Sales Tax & Tax Exempt Status** - Dustin Courson



- 2:45 - 3:45 pm - Erosion & Sediment Control** - Int'l Erosion Control Assn.
- 4:00 pm - Awards Committee
- 4:00 pm - Nomination Committee
- 5:00 pm - Hospitality Hour
- 5:45 PM - Exhibitor Group Photo**
- 6:00 pm - Early Bird Dinner**
- 6:15 pm - Convention Chair Welcome

"Best Dressed" Prize Basket

- 7:45 pm - LIVE Auction**
- 9 pm - 1 am - Associate Hospitality Rooms Open



Door Prize Giveaway

Friday, January 14th

- 7:30 am - Devotional Service
- 7 - 9 am - Complimentary Hotel Breakfast
- 8 - 11 am - Registration
- 8 am - 5 pm - Exhibits Open
- 9:15 am - Shop Organization - Contractor panel**
- 10:30 am - Soil Science - Bob McLeese** (retired NRCS)
- 12:00 - Lunch
- 12:30 pm - Partner Reports
- 1:30 pm - Board of Directors
- 1:30 pm - Associates Committee
- 2 pm - Exhibit tear down
- 2 pm - Members meeting
- 5:00 pm - Hospitality Hour
- 6:00 pm - Dinner
- 7:30 pm - "Family Feud"
- 9:00 pm - 1:00 am Associate Hospitality Rooms Open



Saturday, January 15th

- 7:30 am - Devotional Service
- 7 - 9 am - Complimentary Hotel Breakfast
- 8:45 am - Door Prize Giveaway - New Members Recognized (Exhibit Hall)**
- 9:30 am - Leave for Backhoe Rodeo at Birkey's
- 12:00 Lunch at Birkeys
- 2 pm - Return to hotel
- 5:00 pm - Hospitality Hour
- 5:45 pm - **Group Photos: Officers, Directors & Members**
- 6:00 pm - Awards Banquet
- 7:30 pm - Awards Ceremony
- 8:30 pm - Presidents Hospitality Room Open

Cam-Corder Raffle Drawing

Awards Banquet



Ladies Program

Thursday, January 13th



- 10:30 am - Cookie / Book Exchange - Ladies Hospitality Room
- 1:30 pm - **Signs of A Stroke** - Kelly Schnler, MSN, RN, CRN

- 2:45 pm - **Healthy Nutrition for Families** - Kim McClintic, MS, RD, LDN

Friday, January 14th

Ladies Day Outing - Fashion Friday

- 9:00 am - Board Bus
- 9:30 am - Arrive in Mackinaw
- 11 am - Lunch at Mackinaw Depot
- 2 pm - Maurice's Fashion Show
- 3 pm - Mary Kay Presentation - Teresa Burch, Mary Kay Beauty Consultant
- 4 pm - Tying Scarves - Jane Rozendaal

Saturday, January 15th

- 8:45 am - Door Prize Giveaway - New Members Recognized (Exhibit Hall)**
- 10 am - **Decorative Wine Bottles** - Marie Bunting
- 11:30 am - BH rodeo or on your own activities (lunch is provided at Birkey's)

Children's Program

Friday, January 14th

- 7 pm - Popcorn & Movie night

Saturday, January 15th

- Discount tickets for Children's Discovery Zone / Upper Limits Rock Climbing Gym / Other downtown attractions & restaurants.

WINTER CONVENTION DETAILS



"Best Dressed" Prize Basket

Wednesday, January 13th -

Normally, members traveling from a distance arrive on Wednesday along with those involved in the getting the convention up and running. Since there's no hockey game in town Wednesday evening, we're getting reservations at Alexander's Steak House for those interested. Let Janet know if you plan to be there.



pm on Friday. Lunch will be served in the Exhibit Hall with reports from our partner associations beginning around 12:30.

Thursday, January 14th -

The convention officially starts at 8 am with registration just inside the conference center main entrance. Stop by and get your name badge, area maps and local information. The exhibit hall opens at 8:30 am and the first educational session begins at 9 am but there's still time to enjoy a donut and coffee while you visit with other ILICA members.



The **Ladies Hospitality** room will be open with a cookie and book exchange set for Thursday morning but just stop by to see what's going on whenever you get checked into the hotel. After lunch, **Kelly Schuler, MSN, RN, CRN** will speak on recognizing the signs of a stroke followed by a presentation by **Kim McClintic, MS, RD, LDN** on Healthy Nutrition for Families, including recipes.



12:00 - Lunch - Served in the ballroom with exhibits open and the ILICA partners from state and federal agencies providing reports as lunch concludes. Our exhibitors sponsor our convention meals and many other activities and have earned our support so let's all stop by during the open exhibit times on Thursday and Friday.

The afternoon educational sessions begin at 1:30 and exhibits remain open right through the hospitality hour and early bird reception. There will be a cash bar in the Ballroom to help set the mood for the **"Groovy" Early Bird Reception** and attendees will receive their own peace necklace...to make sure everyone fits into the evening's festivities. Plan on breaking out the old bell-bottomed jeans, tie-dye shirts, headbands and granny glasses as there will be a **"Best Dressed" Contest** prize basket for the "hippest hippy!" Our always entertaining auction begins after our **"trip"** back to the Peace & Love Era,



so be sure to check out the many treasures available and join us for another fun auction. The Associates Hospitality Rooms open around 9 pm, after the auction concludes and will remain open until 1 am...so no one get's in too much trouble.

Friday, January 15th - The 2nd day of convention begins with Devotional Services and registration for those that weren't able to get away on Thursday. And since the room rate includes a FREE full breakfast, attendees can eat anytime between 7 - 9 am, whenever it is convenient. Exhibits will be open until 1



The afternoon is full of meetings, starting just after lunch. Once the meetings conclude, the 5pm Hospitality Hour will commence in the Ballroom, and even though our exhibitors will have headed home, we can still enjoy an evening of good food, friendship and old-fashioned family entertainment. A special chaperoned "Movie Night" complete with popcorn and other healthy snacks has been planned for the children so everyone can enjoy the evening. With the overwhelming success of last year's "Newlywed Game," the committee has been working on putting together an ILICA version of the "Family Feud." Trust me...it will be a fun evening!



Friday's Ladies Day - After devotions and a quick breakfast, the ILICA Ladies are boarding their private bus to head for **Mackinaw** to start their day with shopping at the **Porcelain Berry & Garden Gate Floral**. They will enjoy lunch at the **Mackinaw Depot Tea Room** and then return to the hotel for a private fashion show by Maurice's and a Mary Kay presentation with personal attention to each attendee. The day will be spent pampering all our ILICA ladies, as they so deserve.

Saturday, January 17th - The complimentary breakfast is from 7 - 9 am once again but please join us for another 7:30 am Devotional Service followed by the **Door Prize Giveaway** and **new member welcome** in the Ballroom. Right after that, we'll load up our competitors for the Back Hoe Rodeo, hosted by Birkey's at their new Bloomington location. Birkey's will host lunch on site as well and everyone is invited. However, there are also several other optional activities available for families including discount coupons for some attractions and restaurants.



The ILICA ladies have a special make and take activity scheduled after breakfast and then are free to shop on their own, take their families out to one of the many attractions in the area or join our "competing cowboys" out at Birkey's.

The bar opens in the Ballroom at 5 pm, starting off the highlight of the convention, the Awards Banquet at 6 pm with the presentation of Awards at 7:30 pm. The committee decided to stay with the traditional Saturday evening scheduling of the banquet, noting how appropriate it is to close the convention honoring those that have supported ILICA in a special way throughout the year.

At 8:30 pm the Presidents Hospitality Room opens to end the conference on a casual note. Please join Steve Anderson for the last hurrah of the convention and welcome David Kennedy, incoming president. And don't forget to thank Steve for his hard work and direction during his 2 year tenure as president.

WINTER CONVENTION EXHIBIT LAYOUT



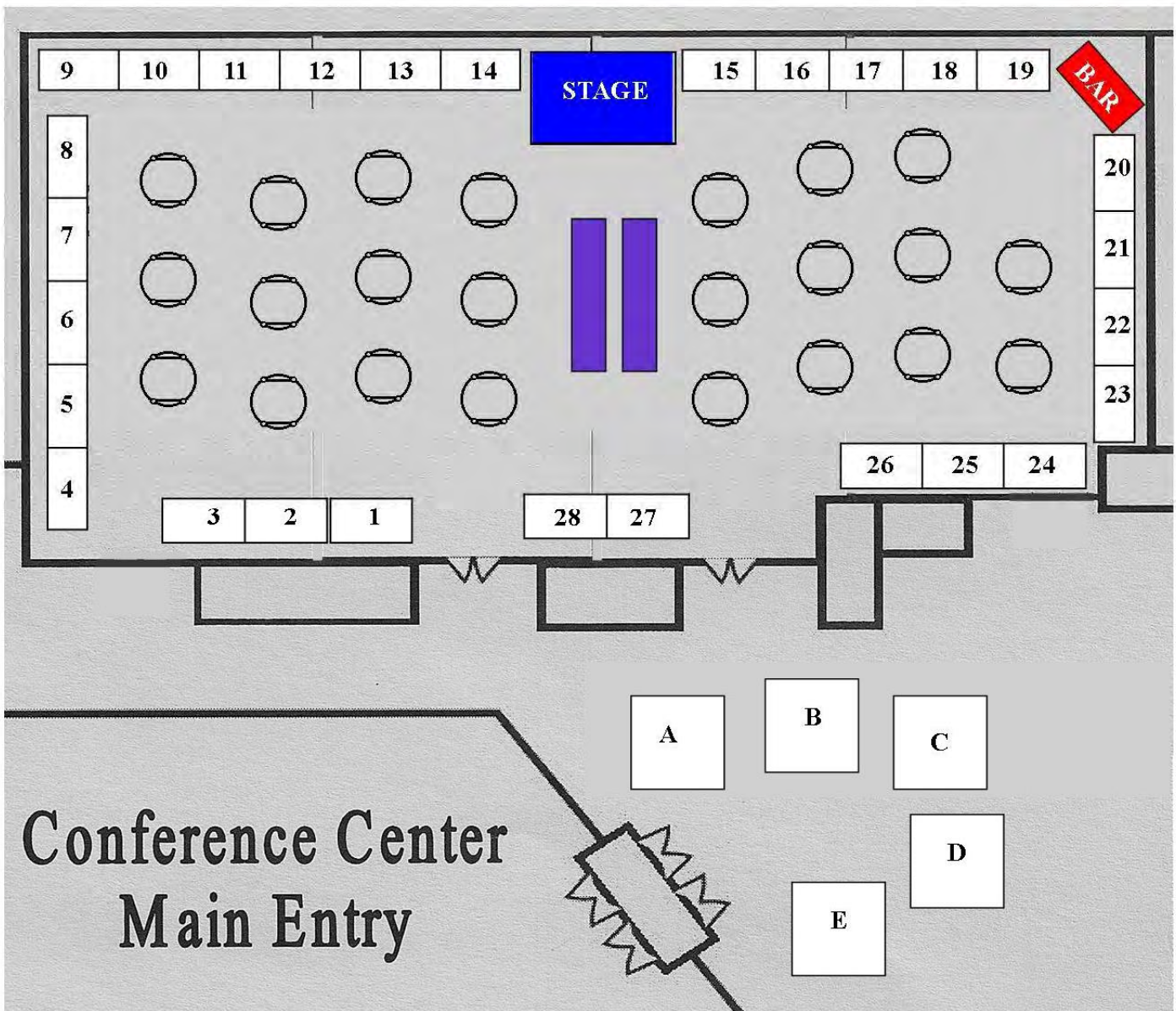
The ILICA winter convention and member meeting will utilize 90% of the space available at the Doubletree Hotel with 4 of 6 connected ballrooms set aside for our exhibit hall and dining area (with a 5th in reserve). Although the familiar perimeter layout of the past remains, there are some changes as well, most noticeably, the 5 equipment display spaces in the pre-conference area.

These spaces are reserved for equipment associates exhibiting in the main ballroom however, there is an additional charge of \$100 for the foyer spots. They will be assigned to the first 5 registrants that apply. If additional equipment displays

are requested, we will work with the hotel to accommodate those requests inside the main exhibit hall if at all possible for an additional \$50 fee.

Doorways into the exhibit area will limit the size of the equipment to 80" high by 94" wide. Exhibit spaces inside the exhibit hall will include a 6' covered table, 2 chairs and provide for (1) full participation registration. Exhibit contracts and other information will be sent directly to all ILICA associates and will be available soon on our website, www.ilica.net.

The tentative schedule is printed on page 6 of this publication and additional details can be found on page 7. Please contact the ILICA office if you have any questions about this year's trade show and we're looking forward to another fun, informative and productive winter convention!



Illinois LICA Convention & Members Meeting

Please Join the **Peace & Love Generation**

January 13 - 15, 2011



Illinois LICA is going back to the "Make Love Not War" era this January at the Doubletree Hotel in Bloomington. Wear your tie-dyed shirt, bell-bottom pants, love beads & peace signs Thursday evening for this year's kick off Early Bird dinner in the exhibit hall. **It's happenin' Man!**



Please contact the Doubletree Hotel reservations at **(309) 664-6446** or call Janet at the ILICA office **as soon as possible** to make room reservations. Mention you are with ILICA to be placed in our room block. Our guaranteed room rate is \$90.

Return completed Registration form to:
Illinois LICA ° P.O. Box 474 ° Brimfield, IL 61517

Or fax to:
(309) 446-3744



Pre-Registration for the ILICA Convention - January 13 - 15, 2011

Attendee Name: _____ Spouse's Name: _____
 Address: _____ City: _____ State: _____
 Company Name: _____
 Child(ren) Name(s): _____

I (we) will participate in the **Birkey's Backhoe Rodeo**
 (Saturday, following Door Prize Breakfast)
 # _____ x \$20 per competitor
 (Add to total enclosed)

Price of registration includes all meals & activities listed in program, unless otherwise noted.

Total Enclosed: \$ _____ (Make check payable to ILICA)

Educational Sessions • Exhibits • Awards Banquet • Door Prizes • Auction Ladies Program • Children's Program • Cam-Corder Raffle • Backhoe Rodeo

Pre-Registration fee:

Must be received in our office by January 2, 2011



	Full Participation (3 days)	One Day Participation
Individual	\$165	Individual \$ 75
Couple	\$265	Couple \$120
Child (under 12)	\$ 75	Child (under 12) \$ 45

(Indicate which day (s) you plan to attend)

Thursday Friday Saturday



Cost of Registration after January 2, 2011

Full Participation (3 days)

Individual	\$200
Couple	\$300
Child (under 12)	\$100



One Day Participation

Individual	\$100
Couple	\$150
Child (under 12)	\$ 60

(Indicate which day (s) you plan to attend)

Thursday Friday Saturday

Awards Banquet Meal Selection - Saturday, January 15th



U.S. Choice Prime Rib of Beef # _____

Chicken Blackhawk # _____

(Swiss cheese & smoked ham in sautéed & baked chicken breast)



Children's Program

Friday Evening: 7 pm- Movie & Popcorn Night
 (Chaperoned, at Hotel during evening entertainment)

Saturday - Discount Tickets to Area attractions



Our children will attend:
 _____ # in party



Ladies Program - Friday, January 14th

Shopping at Porcelain Berry & Garden Gate Floral
 Lunch at Mackinaw Depot Tea Room

Return to Hotel for Fashion Show & Mary Kay Presentation



Saturday, January 15th

I will attend Backhoe Rodeo w/Lunch

I / we will attend:
 _____ # in party





LOOKING FOR *ILICA NEWS* LADIES PAGE IDEAS



For the last 28 years, *ILICA News* has been brightened by the talented writings of Ramblin' Rose and it is difficult to imagine this publication without her entertaining and uplifting articles. However, since Rose is now enjoying her reward for a life well lived with the "Man Upstairs", the editor is actively searching for something else to print each month that might appeal to our *ILICA* ladies. Rose Day's granddaughter, Kristin Kutemeier, has agreed to help get this project off the ground, but suggestions are encouraged and would be much appreciated.

It has long been known that the ladies are a very big part of *ILICA* and that their interests are as diverse as the land improvement industry itself. The possibilities are endless ... anything from health, to local women's programs to food. If you find something YOU find interesting or informative, send it to the *ILICA* office and the editor will arrange a page per issue, full of ideas and articles for our girls.

- ◆ NEW RECIPIES
- ◆ HEALTH ALERTS
- ◆ FAMILY ACTIVITIES
- ◆ CAREER ISSUES
- ◆ ANNOUNCEMENTS
- ◆ FINANCIAL ISSUES
- ◆ WOMEN'S ACHIEVEMENTS
- ◆ ETC.....





FRATCO... Now serving Indiana AND Illinois!

With more than 86 years of supplying quality drainage products, you can count on FRATCO!

FRATCO DELIVERS - We maintain a full inventory of drainage products ready for delivery, so we always have what you want, when you want it. Our extensive manufacturing capabilities ensure that your order is filled promptly and accurately.



FRATCO IS FRIENDLY - Our friendly staff is available to answer any questions about our products and will provide unparalleled delivery and flexibility. Call us any time for answers to your questions about manufacturing or installing HDPE pipe and fittings!



FRATCO PRODUCES - Our products include:

- 2" - 24" HDPE Single Wall Pipe
- 4" - 60" HDPE Smooth-Corr Pipe
- Water Tight and Silt Tight Joints
- Full line of HDPE Fittings and Accessories
- Custom Fabricated HDPE Fittings
- Septic Tanks, Distribution Boxes, and PVC Pipe



FRATCO NOW SERVES ILLINOIS

- This Spring, Fratco acquired Eastern IL Clay Company. We look forward to introducing new customers to our unparalleled quality and friendly service!



FRATCO INC.

PO BOX 368	PO Box 657
Francesville, IN 47946	St. Anne, IL 60964
PH: 800-854-7120	PH: 800-475-8144
F: 219-567-9296	F: 815-427-8150

www.fratco.com / office@fratco.com






QUALITY - STANDARDS MEAN SOMETHING! That's why every inch of FRATCO pipe that bears ASTM and AASHTO markings is manufactured from 100% virgin HDPE that is in-house tested for the full performance criteria that these standards require. Our philosophy is that pipe installed in the field is no less important than pipe installed under a highway.


LICA RECOMMENDED INSURANCE PROGRAM

Continental Western Group®




ILLINOIS
CHAPTER
Land Improvement Contractors
of America
LICA

HOW DOES YOUR POLICY STACK UP?



- POLICIES DESIGNED SPECIFICALLY FOR DIRT MOVERS

- A SAFETY GROUP PROGRAM, OVER \$1,000,000 PAID BACK TO LICA CONTRACTORS IN THE FORM OF A DIVIDEND



Administered by:
PRINS INSURANCE, INC.
SINCE 1936

FOR MORE INFORMATION, CONTACT PRINS INSURANCE BY CALLING 1-800-831-8545 OR EMAILING BRUCE MOSIER AT BMOSIER@PRINSINS.COM

Copyright © 2010 Continental Western Group, LLC. All rights reserved.



AREA MEMBER MEETINGS TAKE ON A SLIGHTLY DIFFERENT FORMAT



With the success of the area meetings, it has been decided to use a similar structure for the establishment of a regular meeting in each area. With Illinois being a large state in relative size, the development of meetings within the areas should enable many who feel a state function is too far away to participate in, find greater involvement in and value from ILICA.

The process of putting on an area meeting is not a difficult one but it can take some effort. A person has to start somewhere though, so in an effort to move this concept into a reality, the membership committee has suggested starting out on a smaller scale, still using the outline set up by our long term planning committee.

1. Set a date

Each area has a mix of “active” and “not-so-active” contractor members. “Active” members can contacting one of the “not-so-active” members closest to them and invite them for coffee or cocktails to discuss what ideas they may have for educational sessions or other activities.

2. Set a location

This casual format eliminates the need for associate sponsorship or formal agendas, making the scheduling much more flexible than with the larger events. Pick a spot that works for everyone involved and find a table when you get there.

3. Set an agenda

The only agenda here is to discover what ILICA can do to serve our members. The hope is that we will discover things that appeal to a broader base of contractors and increase attendance at every event, simply because it is exactly what our members are looking for.

4. Get the word out, publicity

Go through the area listing of the ILICA directory and see who can spare a little time. Pick up the phone and make the calls. Go with who ever is available and plan on doing it again.

5. Have a leader and greeter

Shake their hand and make them and their ideas feel welcome. Remember that associations exist so their members become better at what they do and to improve and protect the arena of business in which they operate.

ILICA MEMBER MEETING SERIES CONTINUES



As another year approaches its end, ILICA took to the road one more time before the snow flies. The first combined state member meeting was held at Roland Machinery Co. in Palmyra Missouri, bringing out more than 40 contractors from Illinois and Missouri for a great meal and DOT presentation with state police from both sides of the river.

Corporal Duppong from the Missouri State Highway Police and Trooper Whatley from Illinois State Police provided an informative and entertaining program along with answers to many questions from those attending. National LICA chairman Bruce Barnhart, CEO Jerry Biuso and Region IV VP Steve Miller also attended along with several LICA members from both states, all of whom were pleased with the turnout.

The ILICA membership committee spent the next day traveling around the Quincy area, making more contacts and realizing what enormous potential exists in that part of the state. They headed to Southern Illinois discussing when, how and where they could hold the next meeting in that area.



(above) Trooper Whatley & Corporal Duppong answering questions from contractors from both states; Group shot of attendees at Roland Machinery's Palmyra Missouri facility.



On Thursday, it was back to Erb Equipment in Mt. Vernon for a electrical safety presentation by Steve Thomas, Director of Operations at Tri-County Electric Cooperative. Erb Equipment has been a supporter of ILICA member meetings since joining a couple of years ago and once again provided an outstanding meal and venue for our event.

Many ILICA members and their wives attended the event and came away with a new level of respect for overhead and underground electric service. Steve brought along several examples of the newest insulators, lines and safety equipment used by TCEC and their linemen today along with some video's demonstrating the fierce and deadly power of electricity.

The membership committee returned home Friday afternoon with 5 new contractor members and a renewed enthusiasm for ILICA's membership "road show". Thanks to all those who made this trip so successful!



(left) Steve Thomas explains the structure of several overhead electric lines carrying different voltage to a very attentive audience; ILICA members finishing a delicious meal before the evening presentation.



ORGANIC EQIP OPTIONS GOING ORGANIC? DON'T GO IT ALONE



Illinois producers with agricultural operations of ALL shapes and sizes can access hands-on technical assistance and science-based conservation solutions and financial assistance of the Environmental Quality Incentives Program (EQIP), administered by USDA's Natural Resources Conservation Service (NRCS.) NRCS offices, located in nearly every Illinois county, now offer EQIP program benefits to farmers certified organic or those transitioning to an organic operation. To learn more, visit NRCS online at <http://www.il.nrcs.usda.gov/programs/eqip/organ-eqip.html>

Of the new conservation options available in the new Farm Bill, one targets producers with organic operations and those ready to make the transition to organic. For these Illinois producers, now is the time to visit with the local Natural Resources Conservation Service (NRCS) office and start the process before the January 15, 2010 sign-up deadline hits.

The new emphasis on benefits of “locally grown” food is based on increased consumer awareness and interest in agricultural products—meat and produce—certified as organic. More people and food production conglomerates demand organic food options. Just look at the organic food section at your grocery store—it’s getting bigger. The market is here.



organic who need help with specific erosion or management issues, can now add NRCS and new Organic options of EQIP to their “to do” list.



For some, diversifying crops and moving away from a monoculture ag environment is not an option. For others, it might be a smart and profitable fit. Take Dave Bishop, in Logan County with a 300-acre operation. He grows a variety of specialty crops, grazes cattle and raises poultry. Dave defines himself as an unconventional organic entrepreneur. He successfully made the

switch to organic and keeps records to document and research what works on his ground and why.

Besides being blessed with a patient temperament, Dave relies heavily on the support of other organic producers and his local conservation team at the USDA Service Center. “You don’t ‘go organic’ overnight,” Dave explains. “It’s called a transition because it takes time. You’re changing the basic elements in your soil and changing the way you manage nearly every single aspect of your operation—that takes at least five to seven years to do it right.” Because it’s not something you do solo, he offers some advice on how to tap into the help and guidance that’s out there, such as the Natural Resources Conservation Service’s (NRCS) Environmental Quality Incentives Program (EQIP).

EQIP now offers conservation technical help and financial assistance for organic operators. Just like traditional ag operations, smaller venues and organic farms, in particular, face their share of natural resource problems. Often, the solutions needed are more complex and labor-intensive because regular “fixes” are not an option. Illinois producers who contemplate getting into new organic market trends or those who are already

Illinois NRCS State Conservationist Bill Gradle says NRCS’ specialists and new EQIP options can address the needs of organic growers—control soil erosion, manage nutrients, improve water quality or wildlife. “With NRCS and EQIP, you can ensure your productivity and sustainability and make it work,” Gradle adds. Another Illinois organic success story is the Glazik family’s 400-acre “Cow Creek Farm” in Ford County, IL. This operation is located near the start of the Middle Fork of the Vermilion River.

As of January 1, 2010, 100% Glazik’s ground is certified organic cropland. The rest is in pasture, natural areas, and other conservation practices, including trees. Glazik’s row crops are in a long and healthy rotation—corn, beans, wheat, oats, and pasture—good for the soil AND the livestock. Using years of experience, guidance from others, and technical assistance of USDA, NRCS, and a variety of other state and federal conservation programs, Glazik plans to explore even more options through the new Conservation Stewardship Program (CSP) and EQIP as he pursues a grazing management plan and use of a rotational grazing system.

“We have a special and diverse farm here,” Glazik explains. “It’s dynamic. It’s always changing. Organic farms are complex because we constantly find new issues that require new and innovative solutions.

But, that’s part of the joy behind our organic farm—every single day is different and every day we learn something new.”

To learn more about options for organic producers in Illinois, visit your NRCS District Conservationist at your County USDA Service Center today!

2011 SAFETY WEEK WORKSHOP (TENTATIVE) AGENDA

TUESDAY, FEBRUARY 8, 2011 - FRIDAY, FEBRUARY 11, 2011

PRESIDENT ABRAHAM LINCOLN HOTEL - SPRINGFIELD, ILLINOIS

▶ **DAILY PRICING** ▶ **CEU'S ON ALL SESSIONS**

▶ **FULL WORKSHOP & ADDITIONAL ATTENDEE DISCOUNTS**

Tuesday, February 8th

- ▶ **8:30 – 9 am:** Registration & Continental Breakfast
- ▶ **9 am – noon:** Confined Spaces; Shoring & Trench Safety; Demolition; Inspections 101 – Brian Bothast, Peoria OSHA
- ▶ **12 – 12:45 pm:** Lunch
- ▶ **1 – 4 pm:** OSHA 10 Hour Certification Bruce Mosier, Prins Insurance, Inc.

Dinner on your own

Wednesday, February 9th

- ▶ **8 – 8:30 am:** Breakfast
- ▶ **8:30 am – 12:30 pm:** OSHA 10 Hour Certification (cont.) – Bruce Mosier, Prins Insurance, Inc.
- ▶ **12:30 – 1:10 pm:** Lunch
- ▶ **1:15 – 5 pm:** Flagger Training – Brent Breedlove, NSC Certified Flagger Training Instructor

Dinner on your own

Thursday, February 10th

- ▶ **7:30 – 8:30 am:** Registration and Breakfast
- ▶ **8:30 – 10 am:** Overhead & Underground Electrical Safety
- ▶ **10:15 – noon:** Gas Compliance Safety - Gina Meehan, Ameren Public Awareness Specialist
- ▶ **12 – 12:45 pm:** Lunch
- ▶ **1 – 2:45 pm:** J.U.L.I.E. Report – Roger Watwood, Southern Illinois Damage Prevention Manager
- ▶ **3 - 5 pm:** Illinois LICA Certification Review & Testing (Optional) - Kent Mitchell

Dinner on your own

Friday February 11th

- ▶ **8 – 8:30 am** Registration and Breakfast
- ▶ **8:30 am – 12 noon:** CPR – Matt Brown, American Red Cross
- ▶ **12 – 12:45 pm:** Lunch
- ▶ **1 – 3 pm:** First Aide – Matt Brown, American Red Cross
- ▶ **3 pm:** Workshop concludes

Breaks are provided each day during morning and afternoon sessions.

Tek Collect

Providing your business with the most advanced accounts receivable management, collections and customer retention solutions.

Douglas Rasmussen
Area Manager


douglas.rasmussen@tekcollect.com


871 Park St.
Columbus, OH 43215
866.652.6500 ext. 1743

Local Office: 2 Clarebrook Dr.
Washington, IL 61571
(309) 202-7181

www.tekcollect.com

WATER MANAGEMENT SOLUTIONS






PRINSCO
ENGINEERED WITH INTEGRITY™



For over 30 years, Prinsco has been developing more than just plastic pipe. We've been developing a reputation that's founded on one simple thing: **INTEGRITY**. It's how we design our products, it's how we treat our customers, it's how we do business.

Look for our **GOLD STRIPE** of quality to ensure your pipe has been engineered with integrity.



800.992.1725 | WWW.PRINSCO.COM

CORPORATE HEADQUARTERS: 1717 16th Street NE | 3rd Floor | Willmar, MN 56201
LOCATIONS: Fairfax, MN | Prinsburg, MN | Rose Creek, MN | Chatsworth, IL | Fort Dodge, IA | Jesup, IA | Bethany, MO | Fresno, CA

2011 SAFETY WEEK WORKSHOP REGISTRATION

Pre-Registration Workshop Fees - ILICA Members			Pre-Registration Workshop Fees - Non-ILICA Members		
	<i>1st Attendee</i>	<i>Additional</i>		<i>1st Attendee</i>	<i>Additional</i>
Full Registration for all Sessions:	\$275	\$250	Full Registration for all Sessions:	\$340	\$315
Individual Day Pricing			Individual Day Pricing		
1 Day Registration	\$ 75	\$ 65	1 Day Registration	\$ 90	\$ 80
2 Day Registration	\$135	\$120	2 Day Registration	\$180	\$165
3 Day Registration	\$220	\$200	3 Day Registration	\$260	\$240
After January 26, 2011 or On-Site Registration			After January 26, 2011 or On-Site Registration		
	<i>1st Attendee</i>	<i>Additional</i>		<i>1st Attendee</i>	<i>Additional</i>
Full Registration for all Sessions:	\$300	\$275	Full Registration for all Sessions:	\$370	\$350
Individual Day Pricing			Individual Day Pricing		
1 Day Registration	\$100	\$ 90	1 Day Registration	\$115	\$105
2 Day Registration	\$150	\$135	2 Day Registration	\$205	\$190
3 Day Registration	\$250	\$230	3 Day Registration	\$300	\$280
Optional Certification Review & Testing (2 year certification period)			Optional Certification Review & Testing (2 year certification period)		
\$100—Initial Certification Per Applicant \$50—Bi-Annual Renewal Per Applicant			\$500—Initial Certification Per Applicant \$200—Bi-Annual Renewal Per Applicant		

The 10-Hour OSHA certification sessions require a 2 day registration and begin with the confined spaces, trench safety, demolition and inspections 101 module on Tuesday, February 8th at 9:00 am.

Sign up for the entire week or select the sessions that make sense for your business and employees. Please note the full week and additional attendee discounts listed above and list

all attendees on the form below. If registrants plan to attend different sessions, note the number of attendees below each day(s) selections.

Pre-registrations must arrive at the ILICA office on or before January 26, 2011 or on-site registration pricing applies.

Lunch and breaks are provided each day of the workshop.

Total Enclosed: \$ _____

Company Name: _____

Attendee Name: _____ Additional Attendees: _____

_____, _____, _____

Mailing Address: _____ City, State _____

Yes, I (we) will attend:

Tuesday, February 8, 2011

Wednesday, February 9, 2011 # _____

Thursday, February 10, 2011 # _____

Friday, February 11, 2011 # _____

Pre-Registration fee: (Must be received in our office by January 26, 2011)
Mail to: ILICA - P.O. Box 474 - Brimfield, IL 61517 or Fax (309) 446-3744

Associate

Corey Getz - ADS, Chair
 Mark Baker - Springfield Plastics
 Mike Bierbaum - Clark Co. Supply
 Dave Mosier - ADS
 Chad Nicholson - Eastern IL Clay
 John Pogge - Prinsco, Inc.

Auditing

Forrest Davis, Chair
 Steve Anderson
 Ron Masching

Awards

Bill & Janet Doubet, Chair
 Brent & Tracy Breedlove
 Rose Day
 Bill & Bev Dean

Budget

David Kennedy, Chair
 Forrest Davis
 Dan Day
 Bill Dean
 Wayne Litwiller

By-Laws

Stuart Anderson, Chair
 Bill Doubet
 Dave Hurst
 Stan SeEVERS
 Joe Streitmatter

Certification

Dave Hurst, Chair
 Forrest Davis
 Wayne Litwiller
 Ron Masching
 Prof. Kent Mitchell, U of I
 Stan SeEVERS

Certification Board

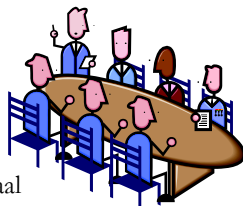
Dave Hurst, Chair
 Forrest Davis
 Dave Kennedy
 Wayne Litwiller
 Ron Masching

Convention

Kristin Kutemeier, Chair
 Brent & Tracy Breedlove
 Bill & Bev Dean
 Greg & Jennifer Furkin
 David & Lori Kennedy
 Joe & Jackie Streitmatter

Devotions

Jean Davis, Chair
 Steve Anderson
 Norm & Coretha Rozendaal

**Education**

Brent Breedlove, Chair
 Neal Barnes
 Prof. Richard Cooke—U of I
 Bob Grothaus
 Ron Masching
 Mike Yordy

Executive

Steve Anderson, Chair
 Janet Burtle-Doubet
 Forrest Davis
 Bill Dean
 David Haag
 David Kennedy

Golf Outing

Wayne Litwiller, Chair
 Jerry Biuso
 Janet Burtle-Doubet
 Forrest Davis

Headquarters

Dan Day, Chair
 Steve Anderson
 Mark Baker
 Dale Collinson
 Forrest Davis
 David Haag

Industrial & Business Relations

Wayne Litwiller, Chair
 Charlie Adams
 Dale Collinson
 Dan Day
 Bill Dean
 Bill Doubet

Insurance

Dave Hurst, Chair
 Charlie Adams
 Dan Day
 Stan SeEVERS

Ladies

Janice Litwiller, Chair
 Jean Davis
 Bev Dean
 Cathy Masching
 Jackie Streitmatter

Legislative

Steve Anderson, Chair
 Neal Barnes
 Lee Bunting
 Dale Collinson
 Bill Doubet
 Dave Hurst
 Carol Kiley
 Norm Kocher
 Joe Streitmatter

**Long Term Planning**

Steve Anderson, Chair
 Stuart Anderson
 Neal Barnes
 Dan Day
 Bill Doubet
 Ron Masching

Membership

Wayne Litwiller, Co-Chair
 Norm Kocher, Co-Chair
 Mark Baker
 Neal Barnes
 Forrest Davis
 Scott Day
 Carol Kiley

Nomination

Forrest Davis, Chair
 Stan SeEVERS
 Joe Streitmatter

On-Site Waste

Wayne Litwiller, Chair
 John McCoy
 Larry Rhodenbaugh
 Jon SeEVERS
 Jason Winings

Picnic

Neal & Tracey Barnes
 Norm & Mary Jane Kocher

Publicity

Bill Doubet, Chair
 Mark Baker
 Neal Barnes
 Bev Dean
 Wayne Litwiller

Safety

Doug Nicholson, Chair
 Brent Breedlove
 Dave Hurst
 Dave Kennedy
 Carol Kiley
 John McCoy
 Jason Winings

Show & Other Income

Dave Kennedy, Co-Chair
 Jon SeEVERS, Co-Chair
 Brent Breedlove
 Brian Brooks
 Forrest Davis
 Joe Krupps
 Wayne Litwiller
 John McCoy
 Joe Streitmatter



MEMBERSHIP APPLICATION

Illinois Land Improvement Contractors Association, Inc.

118 E. Knoxville · PO Box 474 · Brimfield, IL 61517
 (309) 446-3700 · Fax: (309) 446-3744 · Email: janet@illica.net

_____ hereby makes application for Active Membership in the **ILLINOIS LAND IMPROVEMENT CONTRACTORS ASSOCIATION, INC.**, (ILICA) and enclose \$_____ as my annual membership dues for the year _____. One dollar (\$1.00), which is included in the \$295 dues, is for a one (1) year subscription to the “ILICA News”, a bi-monthly newsletter.

Send completed application with payment (make check payable to ILICA) to the corporate address above or give to any ILICA member to forward.

Name: _____ DOB:(*required for active members only*) _____
 Firm Name: _____
 Spouse: _____ County: _____
 Address: _____
 City: _____ State: _____ Zip: _____
 Email : _____ Sponsor: _____
 Phone: _____ Cell Phone: _____ Fax: _____

Check All Services Provided

- | | |
|---------------------------------|---|
| CUI - Cable/Utility Inst. | OSW—On Site Waste Treatment |
| DB - Directional Boring | PD - Ponds / Dams |
| DI - Drainage/Irrigation | RBD - Road Boring/Drainage |
| DWM - Drainage Water Mgmt | R - Reclamation |
| EC - Erosion Control | SA - Dealer/Service Co./Government Agency/
Consultant/Insurance Agency |
| EMC - Earthmoving/Land Clearing | SP - Site Prep |
| EXG - Excavating/Grading | SWU - Sewer/Water/Underground Utilities |
| GR - Gravel/ Rock Production | TH - Trucking / Hauling |
| LL - Land Leveling | TW - Terraces / Waterways |
| LS - Landscaping | WM - Water Management |
| ODW - Open Ditch Leveling | Other: _____ |



- Active Contractor Membership - \$295** (*One hundred seventy dollars (\$170) for Illinois Membership plus One hundred twenty five dollars (\$125) for National Membership*)
 (Active members are individuals engaged in the business of entering into contracts for performing work that will result in soil, land, natural resource conservation or rehabilitation, water conservation, control and prevention of soil erosion, depletion and misuse of natural resources and soil and water pollution and contamination.)
- Associate Membership - \$295** (Associate members are those businesses that manufacture or sell equipment, materials or services used by active members)
- Affiliate Membership - \$85** (Affiliate members are individuals employed by an active member in the business that makes the active member eligible for membership)

ILLINOIS LICA BENEFITS



Education

Illinois LICA provides many educational opportunities throughout the year with sessions at our annual convention, at Area 3 and 8 member meetings and at workshops each year. Area 5 director, Brent Breedlove, is in the planning stage of beginning meetings in his area with other areas following suit.

Illinois LICA state convention, which includes exhibits by our associate members, is scheduled each January in various locations around the state. First year contractor members will receive 1 free full participation registration to the convention, which includes all meals during the 3 day event. Several educational sessions are scheduled during the convention along with many social and networking opportunities.



Workshops have been offered annually, however, there is an expanded schedule this year, including two survey and design drainage workshops and an erosion control workshop in August. OSHA 10 Hour certification will be offered every other year as well as Certified Flagger training available as often as demand warrants.



Continental Western Group/LICA Insurance Program

Continental Western Group has designed a comprehensive LICA Insurance program, blending Property, Inland Marine, Crime, General Liability & Business Auto coverage into a simple and convenient policy. It offers standard coverage for many items specific to the Land Improvement industry, providing outstanding coverage at a very competitive rate, even before the Safety Group Dividend potential return. Although the dividend is not guaranteed, the return rate has been between 3.5% and 12% most years.



ILICA News & Annual Directory

The ILICA News is a bi-monthly publication distributed to all Illinois LICA members that contains 24 pages of information relative to the land improvement industry as well as notice of activities and upcoming events. The annual directory of members is published each spring and distributed to all ILICA members and many IEPA, NRCS and SWCD offices throughout Illinois.



Legislative Representation

ILICA has an active Legislative Committee that monitors legislation that impacts small business in Illinois. They participate in the Agricultural Legislative Roundtable caucus and many other events then disseminate that information to ILICA members. They are currently working on a system to streamline this process for more effective communication.

ILICA not only maintains its own relationship with legislative contacts, Illinois along with other state chapters have a combined voice in Washington DC through national LICA. Each year, representation from ILICA travels to Washington DC along with several other chapters, to lobby their congressmen and women regarding legislation that affects land improvement contractors.



National Benefits

A LICA membership entitles contractors to many benefits that can give their company a competitive edge. Listed below are just a few:

- National LICA Contractor Magazine
- LICA Contractor Safety Management Plan
- LICA Mini-Med Basic Healthcare Program
- LICA PerksCard Program
- LICA Transamerica Retirement Program
- National LICA Winter Convention and Summer Meeting
- LICA 6-Pack Health Care Savings Card Program
- LICA FlexSystem
- LICA BizPlan
- Term Life Benefit (discontinued as of January 2011)

CALENDAR OF EVENTS

Illinois

2011 Annual Member Meeting & Convention

Doubletree Hotel - Bloomington, IL

January 13 - 15, 2011

Safety Week Workshop

President Abraham Lincoln Hotel - Springfield, IL

February 8 - 11, 2011

Erosion Control Workshop

I-Hotel & Conference Center - Champaign, IL

March 3 - 4, 2011

National

2011 LICA Winter Convention

in conjunction with:

ConEx / ConAgg - Las Vegas, Nevada

March 20 - 22, 2011

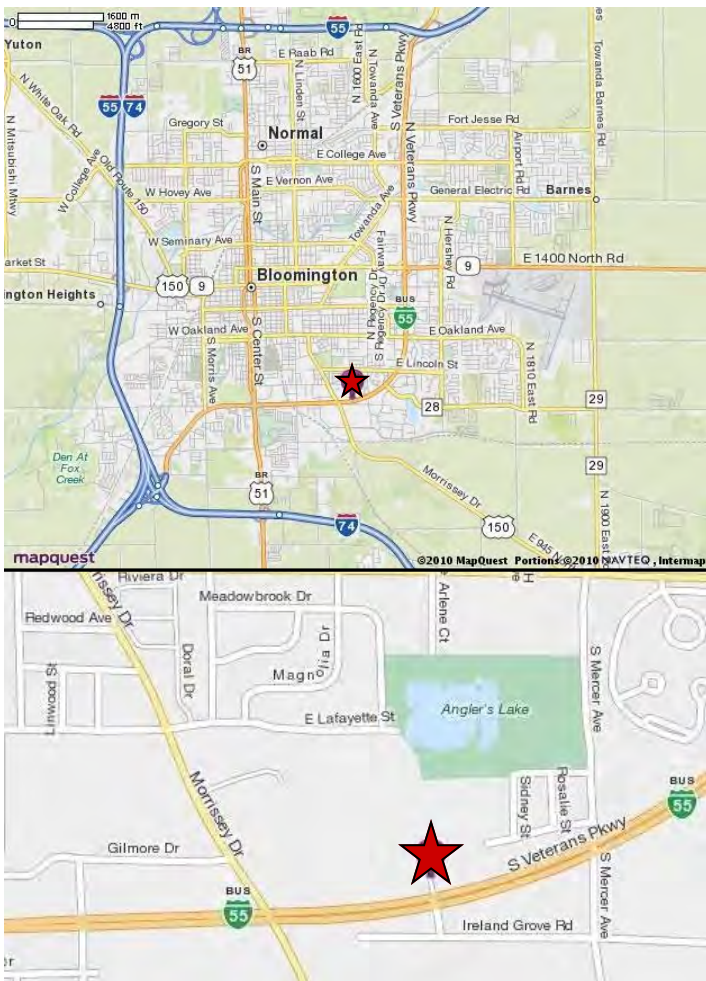
ADVERTISERS INDEX

Agri-Drain Corp	2
Continental Western Group/Heiser Ins.	5
First Mid-Illinois Bank & Trust	23
Fratco, Inc.	10
Martin Equipment of Illinois	24
Midwest Auger Aerator.	24
Precision Intakes LLC	24
Prins Insurance Inc.	11
Prinsco	14
Roland Machinery Co	2
RWF Bron	22
Springfield Plastics Inc.	24
Stadel Electronics	5
Tek Collect.	14

January Board & Member Meeting Location
Doubletree Hotel & Conference Center
10 Brickyard Drive - Bloomington, IL 61701
(309) 664-6446

From North: Follow I-55 S toward Bloomington, Il. Take the I-55-BL S exit, **Exit 167** toward Veterans Parkway/Airport. Turn left onto I-55-BL S/N 1700 East Rd/CR-31S. Continue to follow I-55-BL S for approx. 6 miles. Turn right onto Brickyard Drive and the Doubletree is straight ahead, bordered by TGI Fridays and Panera's.

From South: Follow I-55 N toward Bloomington and take the I-55-BL N/Veterans Pkwy/I-74/US-51 exit, **Exit 157A**, toward Decatur/Indianapolis. Merge onto I-55-BL N/Veterans Pkwy via **Exit 157B** on the **LEFT** and follow for approx. 3.8 miles. Turn left onto Brickyard Drive and the Doubletree is straight ahead, bordered by TGI Fridays and Panera's.





U OF I EXTENSION MULTI-COUNTY DIRECTORS ANNOUNCED



UNIVERSITY OF ILLINOIS
EXTENSION

New University of Illinois county directors will begin providing leadership in the multi-county units on November 1st. Three county-level positions are yet to be filled.

"Reorganizing the U of I Extension offices statewide has been a difficult process but we are very pleased with the caliber of the personnel in the key leadership positions," said Robert Hoefl, Interim Associate Dean for Extension and Outreach. "We are living in tough economic times, but I'm confident that our county directors will rise to the challenge and provide meaningful programs and services to the counties in their jurisdiction."

The multi-county unit county directors are:

- Margaret Larson: Jo Daviess/Stephenson/Winnebago
- Vicky Broos: Boone/DeKalb/Ogle
- James Reaves: Lake/McHenry
- Joe Schwamberger: Carroll/Lee/Whiteside
- Sandra Davis: DuPage/Kane/Kendall/
- Willene Buffett: Cook
- Tony Franklin: Henry/Mercer/Stark/Rock Island
- Jill Guynn: Bureau/LaSalle/Marshall/Putnam
- Beth LaPlante: Grundy/Kankakee/Will
- Lisa Fulkerson: Henderson/Knox/McDonough/Warren
- Earl Allen: Fulton/Mason/Peoria/Tazewell
- Cynthia Baer: Livingston/McLean/Woodford
- Ginger Boas: Champaign/Ford/Iroquois /Vermilion
- Aaron Dufelmeier: Calhoun/Cass/Greene/Morgan/Scott
- John Fulton: Logan/Menard/Sangamon
- Doug Harlan: DeWitt/Macon/Piatt
- Denise Kistner: Christian/Jersey/Macoupin/Montgomery
- Jim Looft: Coles/Cumberland/Moultrie/Douglas/Shelby
- Stacy Larson: Clark/Crawford/Edgar
- Rachelle Hollinshead: Clay/Effingham/Fayette/Jasper
- Pam Jacobs: Madison/St. Clair/Monroe
- Joel Brumley: Edwards/Lawrence/Richland/Wabash
- Julie Mumbower: Franklin/Jackson/Perry/Randolph/Williamson
- Jody Johnson: Alexander/Johnson/Massac/Pulaski/Union

The three positions yet to be filled are for the following multi-state counties:

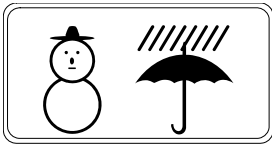
- Adams/Brown/Hancock/Pike/Schuyler
- Bond/Clinton/Jefferson/Marion/Washington
- Gallatin/Hamilton/Hardin/Pope/Saline/Wayne/White

New Extension educators will be announced in early November and begin in their new positions on July 1, 2011.

Source: Robert Hoefl, Interim Associate Dean, Extension and Outreach; rhoefl@illinois.edu



SAFETY FEATURE: WINTER IS COMING! SLIPS, TRIPS AND FALLS!



This week we're looking at slips, trips and falls. It is the number 1 reason for an industrial injury in the United States. Today let's look at walking outside when it's cold and snowy or icy.

HERE ARE SOME TIPS:

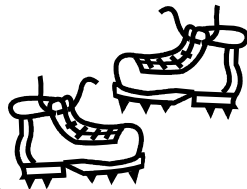
- ◆ Plan ahead and give yourself sufficient time.
- ◆ When walking on steps, always use the hand railings and plant your feet firmly on each step.
- ◆ When walking on an icy or snow-covered walkway, take short steps and walk at a slower pace so you can react quickly to a change in traction.
- ◆ Bending your knees a little and taking slower and shorter steps increases traction and can greatly reduce your chances of falling. It also helps to stop occasionally to break momentum.
- ◆ Streets and sidewalks that have been cleared of snow and ice should still be approached with caution. Look out for black ice. Dew, fog or water vapor can freeze on cold surfaces and form an extra-thin, nearly invisible layer of ice that can look like a wet spot on the pavement. It often shows up early in the morning or in areas that are shaded from the sun.



◆ Carrying heavy items can challenge your sense of balance. Try not to carry too much--you need to leave your hands and arms free to better balance yourself.

◆ Be prepared to fall and try to avoid using your arms to break your fall. If you fall backward, make a conscious effort to tuck your chin so your head doesn't strike the ground with a full force.

- ◆ When entering a building, remove as much snow and water from your boots as you can. Take notice that floors and stairs may be wet and slippery--walk carefully.



◆ Use special care when entering and exiting vehicles--use the vehicle for support.



Discussion Date: _____

Employee Participants



THE 2011 FARMERS ALMANAC WEATHER PREDICTIONS

By John Peterson, LICA Director of Government Relations



How many of you grew up with the *Farmers Almanac* as I did? The *Farmers Almanac* goes back to 1818, and in my part of rural Minnesota it was the bible for most farmers. It advertises as “Containing early America at its best, delightfully threaded through with a measure of good humor, amusing anecdotes, wise-old weather predictions, helpful hints and good reading for every member of the family done on a high moral plane.” It is located in Lewiston, Maine, www.farmersalmanac.com.

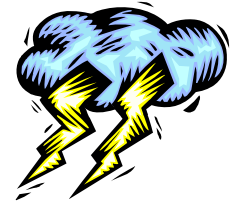
I received my 2011 copy this week, and in an attempt to offer something a bit lighter than my usual political and legislative fare, thought I would tell you what the Almanac says our upcoming weather is supposed to be. After all, contractors watch the weather just as farmers and ranchers do. And, the Almanac has a reputation for accurate predictions. I'll just hit the high spots, and then we'll see how well the Almanac does this time.

“We’re looking at an upcoming winter season that will display a split personality nationwide. The eastern third of the country (New England down to Florida and as far west as the lower Ohio River and Mississippi River Valley) will experience colder-than-normal winter temperatures. Across New England, where relatively balmy temperatures prevailed during the winter of 2009-2010, the upcoming winter will be the equivalent of a cold slap in the face, as we forecast much colder-than-normal temperatures.

Meanwhile, for the Western states, milder-than-normal winter temperatures are expected. They will spread from the Pacific Coast inland as far as the Rockies and the western Great Plains. Across the nation’s midsection, near-normal winter temperatures are expected.

Copious amounts of precipitation will be experienced from lower Texas across the south (TX, LA, AL, MS, GA) into the Mid-Atlantic region. From southwestern Canada into parts of the Northern and Central Plains to the Ohio River and Great lakes region they will have snowier-than-normal conditions. The Pacific Northwest will experience above-normal precipitation.

Spring will be mild and showery in most areas, while the summer should see a greater-than-normal tally of locally strong thunderstorms, especially over the eastern third of the country, where much heavier-than-normal precipitation could fall over New England. Some of this activity could be especially severe and perhaps even lead to widespread tornado activity in the tornado belt early in June and again during mid-July.




Portions of the Central and Southern Rockies and the Great Plains could also see a lot of thunderstorms. About two-thirds of the country will experience above-normal summer temperatures, with an unusually large region of much above-normal temperatures for the Southern and Eastern states. We are expecting a spell of widespread extreme heat and humidity for the latter days of the summer, especially for late August and early September. A tropical disturbance could deliver some adverse weather to New England’s coasts in early August.”




The Almanac contains weather forecasts by region by month, and this was my clumsy summary. It is fun to take a break from the usual things I monitor for LICA. I hope the 2011 weather works in your favor!

SELF PROPELLED DRAINAGE PLOWS



- Contractor inspired innovations
- CAT® diesel engines
- Oscillating track frames & auto-self leveling main frames
- Standard line fittings, hoses and fasteners
- Climate controlled cab
- Available as add-on or self propelled units

visit us on the web at
www.rwfbbron.com



Tel: 1-519-421-0036
Toll-Free 1-800-263-1060
Fax: 1-519-421-0028
Email: info@rwfbbron.com

**145 years in business.
Zero government bailouts.**

0% Interest for 120 Days

on your next **ag equipment** loan.

Rates as low as 3.90% after 120 days.



Call Clay Dean at 1-800-577-1455 or contact
one of our 38 banking centers across Illinois.



www.firstmid.com
Member FDIC • Equal Opportunity Lender



Springfield Plastics, Inc.

Your Supplier for Quality Drainage Products
Fast Deliveries & Knowledgeable Staff
Complete Line of **HEAVIEST FITTINGS**
on the Market



100% Certified
VIRGIN Resin Only

*Quality You Can Count On,
The Treatment You Deserve*

800-252-3361 www.spipe.com

ILICA Supporter for 31 Years

DEERE, MARTIN & TRI-STATE THREE NAMES YOU CAN DEPEND ON!

INDUSTRIAL EQUIPMENT SALES, SERVICE, RENTALS AT 9 LOCATIONS

Goodfield, IL 309-965-2502	Springfield, IL 217-528-4347	Tolono, IL 217-485-6755
Rock Island, IL 309-787-6108	Peru, IL 815-224-4711	Cedar Rapids, IA 319-365-0515
Dubuque, IA 563-588-1950	Ashland, MO 573-657-2154	Palmyra, MO 573-769-2274

BEST TOTAL SUPPORT

MARTIN

TRI-STATE

CONSTRUCTION EQUIPMENT CO.

MARTIN EQUIPMENT OF ILLINOIS, INC.
MARTIN EQUIPMENT OF IA-IL, INC.
TRI-STATE CONSTRUCTION EQUIPMENT CO.

Precision Intakes Full Line of Surface Water Intakes

- 8" & 10" riser with patented 8" & 10" combination Tees.
Also 6" square & round risers with patented reducing Tee.
- Constructed of heavy-weight, high-density polyethylene.
- Parts highly adjustable & interchangeable with others on the market.
- Orifice plate placed at tee level or at ground level.
- Exclusive locking device on each part.
- User Friendly-Priced effectively.
- Adaptor available to repair old metal or broken intakes.



Type II Riser-
6" & 10" Trash
Baskets with
marker cup feature



Why inventory 2, when 1 serves both!



PATENTED
REDUCING TEE

"Dealer Inquires Welcome"

~~PRECISION INTAKES~~

Norm & Coretha Rozendaal

2064 Republic Ave West
Monroe, IA 50170

(800) 932-7611

(641) 259-2651

(641) 259-3218 Fax

"LIFE'S SHORT—DIG FAST!"

BUCKEYE 7200 MAGNUM



- STATE-OF-THE ART DESIGN
- HIGHER PRODUCTION
- BETTER BUILT

MIDWEST AUGER-AERATOR

AUGER BACKFILLERS / WHEEL TRENCHERS
AUTHORIZED DEALER — BUCKEYE / SPEICHER
1-800-232-7008

