
ILICA



NEWS

Land Improvement Contractors Of America · Illinois Chapter

September - October 2009

Bill Dean
Chairman of the Board

Steve Anderson
President

David Kennedy
Vice President

David Haag
First Vice President

Janet Burtle-Doubet
Secretary

Forrest Davis
Treasurer

Directors

Dave Hurst
Wayne Litwiller

Stuart Anderson
Eric Southcombe

Bill Doubet
Mike Yordy

Ron Masching
John McCoy

Brent Breedlove
Forrest Davis

Scott Day
Jon Seevers

Neal Barnes
John Barttelbort

Dan Kieffer
Norm Kocher

Janet Burtle-Doubet
Executive Director

Upcoming Events:

U of I Erosion Control & Bell
Tower Project - Aug. 3 - 7, 2009

Farm Progress Show, Decatur
- September 1 - 3, 2009

1ST ANNUAL AREA 3 GOLF OUTING IS A HUGE SUCCESS



Devon Hess, Greg Martin, Jeremy Smith & Eugene Glueck of Martin Equipment
tee off on the 7th hole at Coyote Creek Golf Club, Bartonville *(page 6 - 7)*

Also Featured Inside

1st Annual Area 3 Golf Outing *(page 6-7)*

Area 3 and Area 8 Member Meeting Scheduled *(page 11)*

2009 Des Moines, IA Summer National *(page 17)*

Return To: Illinois LICA
P.O. Box 474
Brimfield, IL 61517

GOLF OUTING PHOTO'S



SELF PROPELLED DRAINAGE PLOWS

- Contractor inspired innovations
- CAT® diesel engines
- Oscillating track frames & auto-self leveling main frames
- Standard line fittings, hoses and fasteners
- Climate controlled cab
- Available as add-on or self propelled units

visit us on the web at www.rwfbron.com

Tel: 1-519-421-0036
 Toll-Free 1-800-263-1060
 Fax: 1-519-421-0028
 Email: info@rwfbron.com

Time for New Equipment?

Choose Roland

Reliable Equipment

- Manufactured to withstand any environment

Responsive Service

- Roland provides service on the job site or in their state-of-the-art facilities

Komatsu Distributor

KOMATSU

Call the Roland Location nearest you today!

| | | |
|-----------------------------|-----------------------------|--|
| Bolingbrook 630-739-7474 | Carterville 618-985-3399 | Marengo 815-923-4966 |
| Palmyra 573-769-2056 | Springfield 217-789-7711 | www.rolandmachinery.com |

The ILICA News



Editor / Advertising Manager
Janet Burtle-Doubet

Chairman of the Board
Bill Dean, Mattoon

President
Steve Anderson, Marseilles

Vice President
David Kennedy, Colfax

1st Vice President
David Haag, Kempton

Secretary
Janet Doubet, Williamsfield

Treasurer
Forrest Davis, Manito

Educational Advisor
Professor Richard Cooke
University of Illinois

The *ILICA News* is the official publication of Illinois Land Improvement Contractors Association, Inc. at 118 E. Knoxville St., Brimfield, IL 61517. (309) 446-3700.

Subscription price is \$25.00 per year, issued bi-monthly: Jan.-Feb.; Mar.-Apr.; May-June; July-Aug. Sept.-Oct.; Nov.-Dec., and includes one annual directory.

FEATURES

LICA Scholarship Winners 2
 Certified Flagger Training Available Soon..... 5
 Rend Lake Picnic Sponsors 6
 Area 3 1st Annual Golf Outing Registration Form..... 7
 Caterpillar Continues To Support LICA 9
 Area 3 & 8 Member Meetings Scheduled11
 Summer Member Meeting & Picnic A Big Success.....12-13
 IEPA & AISWCD Unveil Conservation Practices 15
 2009 Des Moines IA Summer National..... 17
 Safety Feature: Loading A Machine For Transport19
 University Construction Projects Update..... 21
 2009 Illinois Farm Progress Show.....22

COLUMNS

Board Meeting Notice 3
 Presidents Message 4
 New Members 5
Gabbin' With the Gals 8
 Legislative Update - Cap & Trade Could Cost \$846 Billion 10
 2009 Committee Members..... 16
 Advertisers Index 18
 Calendar of Events 18
 U of I: Enjoy Life - Install A Farm Pond/Yellow Jacket Nests in Houses. . .20
 Contractor Member Application 22
 Associate Member Application..... 23



The LICA Creed

Land, the foundation of the Nation
 The basis of all wealth
 The heritage of the wise
 The thrifty and prudent
The poor man's joy and comfort
 The producer of food, fiber and fuel
 The basis of factories
 The foundation of banks

All that man builds is from the land. We often take it for granted or even abuse it; And yet many, unthinkingly and unknowingly pass the land by. What man does with the land will be the deciding factor of his survival.

SCHEDULE CHANGE

Meeting Notice

ILICA Board Meeting
 President Abraham Lincoln Hotel
 Springfield, IL (Downtown)
Saturday, August 29, 2009 - 2:00 pm

Committee Meetings
 10:00 am - 1:00 pm
 Lunch Provided
 (See map on page 18)



PRESIDENT'S MESSAGE

Greetings members and friends,

After a welcome stretch of dry weather where some shine has been put on the equipment once more along has come some rain. Certainly nothing new in this year, at least in my area. However it was great for the golf outing in the Peoria area at Coyote Creek. Thanks to all associates, members, and golfers for a wonderful afternoon together and for a successful drive to raise some funds for the association. Thanks especially for the organizers, our great membership committee of Wayne, Forrest, and Norm. Thanks also to Jerry for his expertise and especially to Janet for all the leg work in getting everything together so well. Hopefully we can move from this into greater works in each area.

With the burgeoning membership it seems the time to start bringing a regularity in area meetings to each area. On the state level, we are putting together a game plan that can be implemented by directors in each area so that we can develop that network that each of us who attend the state functions has come to recognize as such a value in their membership in ILICA. It will allow you as a contractor member to have something more local, give associates the chance to host and proclaim their wares, and to enable you to gain new knowledge through education sessions offered at the meet-

ings. And to directors, don't let this seem as another burden of the job but as an opportunity to be leaders in your area and gaining contacts and influences you might not have had. Might come to where being a director becomes a wanted position and not one that is an "okay, I will do it" thing. So everyone start getting ready, plant the seed in your mind and prepare it for growth. We are looking for a start with the new year if not before in some of the more active areas.

Would also like to take this time to send my thanks for all those that helped out with the University of Illinois projects. We had some very committed operators that gave as much time as they could to get the jobs done. Thanks to the show committee chairs of Neal Barnes and Jon Seevers for all the work, travel, and skills in getting the jobs done. Thanks too to Day Drainage for doing that last bit of digging needed to connect the ditches on the erosion site. Hopefully we will learn a lot from the class that is part of the compensation for the association.

As we enter into the home stretch of the working season, just remember that saying of: there is never enough time to do it right but always time to do it over. Don't rush for the sake of production over safety. Keep yourselves and those around you safe. We don't want to lose you.

Steve Anderson, President



NEW MEMBERS



Active Contractors

- Lars Colgan
Colgan Excavating, LLC - Savanna
- Jay Mulholland
Countryside Drainage LLC - Rochelle
- Paul Beisiegel
Beisiegel Excavating - Freeburg

Associate Members

- Ero-Tex - Morton, IL
- Waterborne Environmental, Inc. - Champaign, IL
- T - L Irrigation Co. - Lawrenceville, IL
- Central Illinois Trucks, Inc. - Morton, IL

Thank You!

1ST FLAGGER TRAINING CLASS HELD IN MORTON

Brent Breedlove has now completed the final requirement for teaching the National Safety Council’s (NSC) Certified Flagger Instructor Course to the general public. A private class was held on August 22nd at Heiser Insurance Agency in Morton for a few ILICA members willing to be Brent’s “beta group.” NSC recommendations suggest that the first class be small enough to insure timely completion of both segments, but Brent seemed like a seasoned instructor as he took 13 participants through classroom and field exercises.



The NSC monitors these classes closely and maintains records for 4 years, processing reminders and duplicate cards when necessary. ILICA acts as the administrator, adding flagger training to the certification tracking already in place as well as maintaining documentation at the office.

The primary objectives of the program are to train flaggers to provide safe passage of traffic through and around work areas and to bring standard flagging procedures to our roadways. The class begins with the completion of mandatory sign-in and student forms followed by a power point presentation that explains the regulations, required equipment and procedures. After a short break, students move to a field

session, which took place in Heiser’s parking lot on this beautiful August day. As shown in the photo below, a two person flagger zone is set up to emulate construction interacting with two-way traffic, which can be done indoors of course, given enough ceiling height.



Brent is currently setting up additional sessions, which must be filed with the NSC at least 15 days prior. ILICA members receive special pricing for the class as another benefit of membership and classes are limited to a maximum of 15 students per session. Flagger training will be schedule during normal ILICA workshops as well as on an “as needed” basis by request.

Contact Brent at (309) 696-9992 or via email at btlove06casscomm.com or call the ILICA office at (309) 446-3700 to schedule your flagger instructor course.

(top) Brent and Rod Walters of Litwiller Excavating go through part of the field exercise. (below) Students took turns working in mock highway construction zone to get hands-on experience in flagging.



WATER MANAGEMENT SOLUTIONS





PRINSCO
ENGINEERED WITH INTEGRITY

For over 30 years, Prinsco has been developing more than just plastic pipe. We’ve been developing a reputation that’s founded on one simple thing: **INTEGRITY**. It’s how we design our products, it’s how we treat our customers, it’s how we do business.

Look for our **GOLD STRIPE** of quality to ensure your pipe has been engineered with integrity.

800.992.1725 | WWW.PRINSCO.COM

CORPORATE HEADQUARTERS: 1717 16th Street NE | 3rd Floor | Wilmar, MN 56201
LOCATIONS: Fairfax, MN | Prinsburg, MN | Rose Creek, MN | Clatsworth, IL | Fort Dodge, IA | Jessup, IA | Bethany, MO | Fresno, CA

1ST ANNUAL AREA 3 GOLF OUTING Is A HUGE SUCCESS!



to enjoy the afternoon watching cart after cart of our golfers drive by.

Illinois LICA has been very busy over the last year, and the 1st Annual Area 3 golf outing was a direct result of the outstanding response of contractors and associates to the recent member meetings held in that area. This is also the first summer since 2004 without a conservation expo somewhere around the state, opening the door to other methods for supporting ILICA.

Although many ILICA members are not what one would call “serious” golfers, everyone was open to the idea of having a fun while supporting the organization. And, once again, the response was incredible. A total of 64 contractors and associates signed up for the afternoon of golf and every one of the 18 tees and greens sported a sponsor sign that can be used again for next year’s outing.



The committee’s hard work and determination also resulted in three outing sponsors, First Security Bank, Heiser Insurance Agency, and Martin Equipment of Illinois, who joined us on the course and who will be recognized in the annual directory and at the January convention for going “above and beyond.”



Support came in from contractors and associates alike, and from a few other more unlikely area businesses. Coyote Creek Golf Club was selected following a site visit last March, initiated by Julie Bushell of the Peoria Convention & Visitors Bureau (PCVB). Jerry Biuso has been working closely with the PCVB and the Holiday Inn City Centre regarding the summer national meetings set for July 2010. Both companies showed their support for LICA by sending golfers and “Jerry’s Girls”, shown above right, who helped with registration, photo’s and raffle prizes, as well as adding to the overall entertainment of the day.



support for LICA by sending golfers and “Jerry’s Girls”, shown above right, who helped with registration, photo’s and raffle prizes, as well as adding to the overall entertainment of the day.

Coyote Creek was also a pleasure to work with and had the course ready for our group well before our arrival. All carts were lined up like trains and clearly marked with foursomes and where their shotgun start would take them. Range balls were in place prior to lunch for those who cared to take a few practice swings and a quick lunch was handed out as people arrived, making for a smooth 1:00 pm start. The beautiful new club house, which was bare stud walls during the March visit, was a fantastic venue for the evening buffet dinner with a spacious upper deck for Jerry and other non-golfing committee members

Power Structure

Expect Track Loaders
Compact Excavators
Compact Wheel Loaders

Driven by a highly trained team
in product and service

Contact your full service dealer for more information

| | | |
|--|---|--|
| Central IL AG - Atlanta 200 Sharon St. Po Box 506 Atlanta, IL 61723 P: 217-648-2307 | Central IL AG - Clinton Rt.10 East Clinton, IL 61727 P: 217-935-8373 | Central IL AG - Farmer City 792 US Hwy 150 E. Farmer City, IL 61842 P: 309-928-2154 |
|--|---|--|

TAKEUCHI
The Power of Product and Support
www.takeuchi-us.com



Front Nine Sponsors

Tee

1. Martin Equipment of Illinois
2. Tompkins State Bank
3. National LICA / Litwiller Excavating
4. Courson & Associates, CPA
5. Precision Intakes LLC
6. Miller Twp. Construction
7. PIP Printing & Document Services
8. Henderson-Weir Agency Inc.
9. Advanced Drainage Systems Inc.

Green

1. Vermeer Midwest Inc.
2. Lemar Precast Concrete
3. Forrest Davis Construction
4. J.D. Construction
5. Tremont Oil Company
6. Midwest Equipment Inc.
7. Day Drainage Company
8. LaHood Construction
9. Prins Insurance Inc.



Back Nine Sponsors

Tee

10. Altorfers Inc.
11. Slavish Precast Concrete
12. Central Illinois Trucks
13. Staley Lawncare & Landscaping
14. Isaacson Concrete & Excavating Inc.
15. RiverStone Group/Central Stone Co.
16. Tremont Village Autobody Inc.
17. Peoria Convention & Visitors Bureau
18. Springfield Plastics Inc.

Green

10. Central Illinois Ag
11. HI-Line Supply Co.
12. D & L Drainage
13. Seevers Farm Drainage
14. Kennedy Farm Drainage
15. T-L Irrigation Systems
16. Progress City USA
17. Bastien Wireless Inc.
18. Agri-Drain Corporation

Area 3 Golf Outing Sponsors



First Security Bank

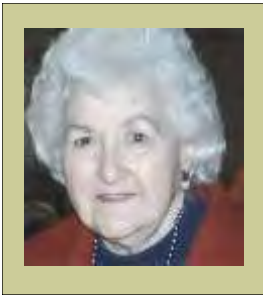


of Illinois

A Warm Thank You to ...

Outing Sponsors: First Security Bank; Heiser Insurance Agency; Martin Equipment of Illinois

Registration Gifts: Roland Equipment; J.U.L.I.E.; Illinois LICA



GABBIN' WITH THE GALS...



June has been over for a while and we just went through another wedding. It renews your faith to watch another couple declare for each other. They went on a honeymoon and are back to basics with furnishing their home and back to their work. It's great to see young people happy with each other and willing to work to seal their vows.

We have another addition to our family: One of our granddaughters married recently and her hubby is officially a family member now. He's the type of person who feels at home wherever he goes, so he seems like one of our family already.

You know life is short anyway you look at it, but when you begin to receive next year's calendars in July, it is as though they are saying "hurry up and finish this year - we need to be getting ready." The days to be gone so, it's one more day on earth used up? The only thing I am sure of is that I will be here until The Man Above decides to invite me to His abode: then and only then can I quit counting days...(no pun intended.)

We are now in the throes of hot summer. Well, the electric company needs more moolah I guess. Humidity is the worst thing for people - it clings to one like it is important. Maybe it is for some things or someone but it takes a trait from Obamaland and treats all of us alike whether or not we deserve it. People who stay in the sun because they want to worry me because it could be detrimental to their skin in later life.

Have you noticed the seemingly increase of air crashes lately? People who have to fly routinely have my sympathy as it scares me! They will tell you it is safer than an automobile and from the increase in auto wrecks in our area alone, they may be right. However, many collisions can be attributed to drivers not watching the car ahead of them. Reminds me of the little old lady who turned off the main road into a driveway without a signal. When the driver behind her asked why she did not signal a turn, she replied, "Well, everyone knows I live here." Amen.

Some nonsense and/or fun things - Youth would be an ideal state if it came a little later in life. Grownups no longer tell secrets in front of you by spelling words. The old believe everything, the middle aged suspect everything and the young know everything! We are only young once - that is all society can stand. The hardest job kids have today is learning good manners without seeing any. The best way to tell a woman's age is in a low whisper. Old people shouldn't eat health foods - the need all the preservatives they can get. Don't take life too seriously - you'll never get out of it alive! You know you are past middle age when you can't be drafted and can't even enlist. First thing I do when awakening in the morning is to breathe on a mirror and hope it fogs over!

Folks who have read this column since the beginning (ages ago) will no doubt remember Rambling Rose would espouse her opinions on you unsuspecting readers. Well, it had to stop; after all, who am I to tell everything I know? Sometimes one feels a need to do that in case the general public is not really aware of what is going on. The route our country is on now pushes me to do the same again. Those who already know what is going on my prefer not to read further. Please keep abreast of the news, TV, Radio and newspapers and express your views if they are better than what you have found. Our country is in danger right now of losing freedoms we have had since Day 1. If the ones in power have their way, democracy will fly out the window and we will be Socialists. Please take this seriously; it is not something any person dreamed up. Do you want someone else making decisions for you - I certainly don't. And be sure to listen to several different people and don't sluff them off. Most important, don't believe it couldn't happen here, because it could - they are laying the bases now.

It looked in the last issue that all were having a good time at the Picnic. Wonder what it feels like to swing a golf club instead of herding a big machine around? It is quite different and you get more exercise. Here's a golf story: Lee Trevino had been hit by lightning at the golf course and not enjoyed the experience. So he has settled on a policy of fleeing the golf course when it starts to rain or lightening. "When God wants to play through, I let Him play through." he said. One of golf's most difficult decisions is whether to try a shot from an awkward lie or to take a drop and the penalty that goes with it. Elaine Johnson's decision was easy. After she'd sliced a shot into a nearby tree, the ball bounced back and lodged in her halter top. "I'll take the penalty" she said, "I absolutely refuse to play it where it lies." When Dan Quayle was campaigning for Vice-President, a woman came up and claimed she had been with him during a one-day golf trip. It was quickly and confidently squelched by Mrs. Quayle who said, "Anyone who knows Dan knows that given the choice between golf and sex, he'll take golf every time!" The story died immediately.

Is August the Dog Days of summer? I neglected to buy an almanac so not sure. Guess I will have to check into that and make a note of it for next time. We hope farmers will have a good harvest season and that Mother Nature cooperates. Many people do not have a clue of chances taken to raise crops and wonder about harvest time.

The word for this time is Pray. I'm very serious about this because it looks like a mighty rough go ahead of us. Keep your eyes and ears open! Stay cool and enjoy your life - it's the only one we have.



.....Rambling Rose



2009 AG DAY AT THE ILLINOIS STATE FAIR

ILICA has enjoyed a long-standing relationship with the Department of Agriculture and receives tickets for their annual Ag Day Luncheon, held near Conservation World at the Illinois State Fair. There was a huge crowd in attendance on a beautiful, breezy day in August for this year's event.

Governor Pat Quinn welcomed attendees along with Dept. of Ag Director, Tom Jennings and several conservation and agriculture related awards were presented following the lunch. Orion Samuelson, well known agricultural broadcaster, and Mr. Jennings presented the 2009 Illinois Conservation Farm Family Award to the Meier Family Farm located near Okawville Illinois. The farm owners, Charles Meier and his sisters Marilee Roethemeyer and Linda Knolhoff are pictured to the right accepting this special award.

Other highlights included a \$50,000 donation from Walmart for the "Illinois Ag in the Classroom" program that promotes the sale of Illinois grown produce in Illinois.



(top) Large crowd gathered for Dept. of Ag presentations following lunch.
 (bottom) Presentation of 2009 Illinois Conservation Farm Family award.

Need Insurance Coverage? Try Illinois-LICA!

We offer broad coverage designed for the needs of heavy equipment contractors.

- Safety Group Dividend
- Wide Range Protection
- Claims & Underwriting Expertise
- Competitive Pricing
- Payment Plan



301 Main Street • Sanborn, IA 51248
1-800-831-8545
www.prinsins.com



LEGISLATIVE UPDATE; ONE FEDERAL AGENCY HAS DECLARED CARD CHECK AS “UNRELIABLE.”

In what strikes me as an ironic twist of fate, while the Administration and its allies in Congress push to allow private-sector workers to unionize by signing authorization cards instead of voting by secret ballot, the government’s own legal-aid program has called the so called “Card Check” strategy “unreliable,” and rejected an effort by some of its own employees to organize that way.

LICA is opposed to the misnamed Employee Free Choice Act, or “Card Check” Bill which will result in union intimidation of employees. This Bill is one of the most direct threats to economic growth and job creation and retention. The Effect of Card Check would be especially disastrous in the construction industry, where the unemployment rate is already more than 18%. See LICA’s Position Paper on Card Check on the LICA website, www.LICANational.org.

The Legal Services Corp. (LSC), a congressionally chartered, tax-payer funded entity, even hired a law firm to rebuff the efforts of workers in its oversight offices to gain union representation by the International Federation of Professional and Technical Engineers (IFPTE), forcing the workers to conduct a vote by secret ballot later this week. LSC distributes grants to legal-aid groups nationwide, and those groups then help the poor with civil cases ranging from domestic abuse and child custody to home foreclosures and disability benefits. LSC received \$390 million in federal funds for 2009.

The LSC’s decision has prompted concerns on Capitol Hill that the government is trying to impose a solution on pri-

vate businesses that its own agencies are not willing to follow.

Organized labor, which has made the Card Check Bill its top legislative priority, argues that Card Check is needed to counter intimidation and stalling tactics by employers when workers try to organize. Employer groups, which are virtually unanimous in their opposition to the Bill, say it will invite abuse by ending the secret-ballot option and lead union organizers to intimidate workers who refuse to sign the cards. That is also one of LICA’s concerns.

Employees in LSC oversight offices, with the help of the IFPTE, appealed to LSC President Helaine Barnett in a July 20th letter, asking her to accept authorization cards signed by an “overwhelming majority” of workers saying they want to unionize. Barnett dismissed the request in a July 28th letter, saying that “authorization cards are often an unreliable indicator of support for a union.” A LSC spokesman did confirm that it had hired outside counsel to assist in rebuffing the union Card Check type organizing effort. The preference of the LSC, which is legally structured as a nonprofit corporation, for using a secret-ballot election process, complies with federal organizing requirements.

It strikes me that it is the height of hypocrisy to say that when the government’s interests are at stake, Card Check is not an accurate way to hold an election, but when it is a private company, Card Check is OK. I hope that all LICA members who oppose this Card Check legislation will let their Members of Congress know how they feel.

By John Peterson, LICA Director of Government Relations

LADIES COMMITTEE SCHOLARSHIP RAFFLE

LICA LADIES SCHOLARSHIP FUND RAFFLE

1st Prize LICA 50th Anniversary Quilt

2nd Prize \$200.00

3rd Prize \$100.00

All Proceeds go to the LICA Scholarship Fund.

In Memory of Leon Sampson

Tickets \$5.00 each or 3 for \$10.00

Drawing February 20, 2010 Phoenix LICA Luncheon

Winner need not be present to win

\$5.00 Each or 3 for \$10.00

Contact the ILICA office for your lucky ticket!



This beautiful quilt depicts several state LICA chapters and is a collaboration involving many LICA ladies hands, time and efforts.

ILLINOIS WINTER CONVENTION JUST AROUND THE CORNER



It's hard to believe, but summer is over and winter is fast approaching, like it or not. Before long, the holidays will be over and January will be here, bringing with it our winter meeting.

ILICA is returning to the President Abraham Lincoln Hotel in Springfield with hopes of warmer temperatures than last year. The food was great, the service outstanding and how can you NOT have a good time with executives who are willing to get the party started by dressing up like Hula girls!

The convention committee is changing it up from last year with a "50's" theme reminiscent of drive-in's with curb service, pony-tails and sock hops. The exhibit hall will be set up very much like last year after receiving high marks from the associates committee and there are more educational sessions of shorter duration, offering more variety to convention goers.

The plan for our ILICA ladies day outing is also a little different than year's past. After breakfast, the ladies will head across town for a morning at the spa, a nice lunch at Mariah's followed by a short trip to Coco Bon's confectionary and then



around the corner to the Corkscrew for a private wine tasting. With less travel time for the ladies, they should be able to return to the hotel in good time to relax a little before dinner.

A "Breakfast with your Legislator" is planned for Friday morning so please invite your local representative to join us. It will mean more than an email from me. The Saturday afternoon tour is still in the works, but all in all, things are coming together nicely. Directors plan to encourage new members in their areas to use their free convention registration to see what ILICA is all about.

More details will be available soon on our website and the registration form will be included in the next issue of the "ILICA News."



2010 ILICA Winter Convention & Members Meeting

January 14 - 16, 2010

President Abraham Lincoln Hotel - Springfield, IL

Awards Banquet Exhibit Hall Entertainment

Educational Sessions Ladies Program

Tour Speakers Ladies Day Outing

Lots and lots of FUN!

NATIONAL LICA RAFFLE TICKETS - \$25



They're raffling off money this time...\$5000 to the grand prize winner and \$500 for 4th prize.

For \$25 a ticket, you get 4 chances to get way more than your money back!

Contact the ILICA office for your lucky ticket!

STADEL ELECTRONICS LASERS

Authorized Service and Sales for Laserplane-Trimble
Also servicing most other models

**SOLVING YOUR LASER PROBLEMS FOR
OVER 30 YEARS**

Tom Stadel

Call anytime
815-777-0193

5928 W. Stagecoach Trail
Galena, IL 61036

AREA 3 MEMBER MEETING - MARTIN EQUIPMENT IN ROCK ISLAND

After a previous visit to the Quad Cities area by our membership committee proved productive, discussions began regarding when a member meeting could be scheduled in that part of Area 3. The committee decided to follow Thursday's golf outing with a Saturday member meeting once Brian Brooks and Larry Rhodenbaugh, ILICA contractors in that area, agreed to help promote the event.

Although Rock Island is still technically Area 3, contractors around Rock Island are still more than an hour from Peoria and Goodfield where other Area 3 meetings have been held. Martin Equipment has been a strong supporter of ILICA's member meetings from the start, so it was no surprise when Joe Dalton, store manager at the Rock Island location, graciously agreed to host a Saturday lunch member meeting at their facility.

The ILICA membership committee continues to the best times to schedule meetings without interrupting the routines of contractors in the industry. Although this year's weather has wreaked havoc on everyone's workload, featuring the District 7 Illinois State Police Commercial Vehicle Enforcement officers. Troopers Delarosa and Malek joined the group for lunch



(top L. to lower R.) The Kutemeier clan and friend on the Prins sponsored



AREA 3 MEMBER MEETINGS CONTINUE RUBBLEMASTER DEMONSTRATION SET FOR OCTOBER 29TH

The first ILICA weekend picnic and members meeting was a great success, even with the scorching heat that weekend. ILICA members from all over the state drove to Southern Illinois with their boats, fishing gear, golf clubs, rifles (for trap shooting of course), and families to enjoy a leisure weekend at Rend Lake Resort.





FRATCO... Now serving Indiana AND Illinois!

With more than 86 years of supplying quality drainage products, you can count on FRATCO!

FRATCO DELIVERS - We maintain a full inventory of drainage products ready for delivery, so we always have what you want, when you want it. Our extensive manufacturing capabilities ensure that your order is filled promptly and accurately.

FRATCO IS FRIENDLY - Our friendly staff is available to answer any questions about our products and will provide unparalleled delivery and flexibility. Call us any time for answers to your questions about manufacturing or installing HDPE pipe and fittings!

FRATCO PRODUCES - Our products include:

- 2" - 24" HDPE Single Wall Pipe
- 4" - 80" HDPE Smooth-Corr Pipe
- Water Tight and Silt Tight Joints
- Full line of HDPE Fittings and Accessories
- Custom Fabricated HDPE Fittings
- Septic Tanks, Distribution Boxes, and PVC Pipe

FRATCO NOW SERVES ILLINOIS

- This Spring, Fratco acquired Eastern IL Clay Company. We look forward to introducing new customers to our unparalleled quality and friendly service!



QUALITY - STANDARDS MEAN SOMETHING! That's why every inch of FRATCO pipe that bears ASTM and AASHTO markings is manufactured from 100% virgin HDPE that is in-house tested for the full performance criteria that these standards require. Our philosophy is that pipe installed in the field is no less important than pipe installed under a highway.

FRATCO INC.

| | |
|---|---|
| PO BOX 368 Francesville, IN 47946 PH: 800-854-7120 F: 219-567-9296 | PO Box 657 St. Anne, IL 60964 PH: 800-475-8144 F: 815-427-8150 |
|---|---|

www.fratco.com / office@fratco.com





NATIONAL LICA WINTER MEETING - PHOENIX AZ FEBRUARY 16 - 20, 2010

You may recall a story about 1 year ago, noting how ILICA members provided excavation work for the AISWCD pervious parking lot and driveway featured in the story on the next page. Rich Nichols had been working with NRCS landscape architects on replacing the gravel areas with permeable pavers as a demonstration for area builders and had asked for ILICA's help with the excavation during the 2008 convention.

Thanks to Dave Hurst, James Wells, Jeff Litwiller, and Rod Walters, the initial phase of the project was completed in less than 2 days.



(top) Wayne Litwiller & Forrest Davis were present for the media day activities. ILICA was also recognized for their contribution to the project.

Excavation of the AISWCD office parking lot and driveway was done by ILICA volunteers in preparation for the installation of pervious surfaces.

Heiser Insurance & Financial Services

At Continental Western Group, business insurance is what we do; period. Our single focus is to provide our customers with the business insurance coverage they need today and in the future. Continental Western Group is the Illinois **LICA endorsed carrier** for property and casualty insurance. Contact Tim Neuhauser at Heiser Insurance at 1-800-727-9775 or Continental Western Group directly at 1-800-235-2942 for more information.

CWGW
Business Insurance.

Period!

Continental Western Group

www.cwgins.com

A BERKLEY COMPANY™

NATIONAL LICA WINTER MEETING - PHOENIX AZ (CONT.)



Associate

Corey Getz - ADS, Chair
 Mark Baker - Springfield Plastics
 Eugene Glueck - Martin Equipment
 Bruce Mosier - Prins Insurance
 Chad Nicholson - Eastern IL Clay
 Ron Schlatter - Schlatter's Inc.

Auditing

Forrest Davis, Chair
 Steve Anderson
 Ron Masching

Awards

Bill & Janet Doubet, Chair
 Brent & Tracy Breedlove
 Rose Day
 Bill & Bev Dean

Budget

David Kennedy, Chair
 Forrest Davis
 Dan Day
 Bill Dean
 Wayne Litwiller

By-Laws

Stuart Anderson, Chair
 Bill Doubet
 Dave Hurst
 Stan SeEVERS
 Joe Streitmatter

Certification

Dave Hurst, Chair
 Forrest Davis
 Wayne Litwiller
 Ron Masching
 Prof. Kent Mitchell, U of I
 Stan SeEVERS

Certification Board

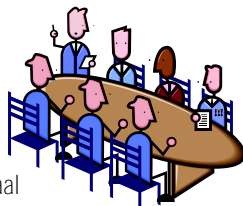
Dave Hurst, Chair
 Forrest Davis
 Dave Kennedy
 Wayne Litwiller
 Ron Masching

Convention

Kristin Kutemeier, Chair
 Neal & Tracey Barnes
 Bill & Bev Dean
 Greg & Jennifer Furkin
 David & Lori Kennedy
 Joe & Jackie Streitmatter

Devotions

Jean Davis, Chair
 Steve Anderson
 Norm & Coretha Rozendaal



Education

Carol Kiley, Chair
 Neal Barnes
 Brent Breedlove
 Prof. Richard Cooke—U of I
 Bob Grothaus
 Ron Masching
 Mike Yordy

Executive

Steve Anderson, Chair
 Janet Burtle-Doubet
 Forrest Davis
 Bill Dean
 David Haag
 David Kennedy
 Golf Outing
 Wayne Litwiller, Chair
 Jerry Biuso
 Janet Burtle-Doubet
 Forrest Davis

Headquarters

Dan Day, Chair
 Steve Anderson
 Mark Baker
 Dale Collinson
 Forrest Davis
 David Haag

Industrial & Business Relations

Wayne Litwiller, Chair
 Charlie Adams
 Dale Collinson
 Dan Day
 Bill Dean
 Bill Doubet

Insurance

Dave Hurst, Chair
 Charlie Adams
 Dan Day
 Stan SeEVERS

Ladies

Janice Litwiller, Chair
 Jean Davis
 Bev Dean
 Cathy Masching
 Jackie Streitmatter

Legislative

Steve Anderson, Chair
 Neal Barnes
 Lee Bunting
 Dale Collinson
 Bill Doubet
 Dave Hurst
 Carol Kiley
 Norm Kocher
 Joe Streitmatter



Long Term Planning

Steve Anderson, Chair
 Stuart Anderson
 Neal Barnes
 Dan Day
 Bill Doubet
 Ron Masching

Membership

Wayne Litwiller, Co-Chair
 Norm Kocher, Co-Chair
 Mark Baker
 Neal Barnes
 Forrest Davis
 Scott Day
 Carol Kiley

Nomination

Forrest Davis, Chair
 Stan SeEVERS
 Joe Streitmatter

On-Site Waste

Wayne Litwiller, Chair
 John McCoy
 Larry Rhodenbaugh
 Jon SeEVERS
 Jason Winings

Picnic

Neal & Tracey Barnes
 Norm & Mary Jane Kocher

Publicity

Bill Doubet, Chair
 Mark Baker
 Neal Barnes
 Bev Dean
 Wayne Litwiller

Safety

Doug Nicholson, Chair
 Dave Hurst
 Dave Kennedy
 Carol Kiley
 John McCoy
 Jason Winings

Show & Other Income

Neal Barnes, Co-Chair
 Jon SeEVERS, Co-Chair
 Brent Breedlove
 Brian Brooks
 Forrest Davis
 Joe Krupps
 Wayne Litwiller
 John McCoy
 Joe Streitmatter



Application for ASSOCIATE Membership
Illinois Land Improvement Contractors Association



P.O. Box 474 · Brimfield, IL 61517 · Phone (309) 446-3700 · Fax: (309) 446-3744 · janet@illica.net

_____ hereby makes application for Associate Membership in the ILLINOIS LAND IMPROVE-
MENT CONTRACTORS ASSOCIATION, INC., (ILICA) and enclose Two Hundred Ninety-Five Dollars (\$295) as my annual
membership dues for the year _____. One dollar (\$1.00) of this amount is for a subscription to the “*ILICA News*”, a bi-monthly
newsletter, for one year.

Associate members shall consist of and be limited to persons, firms, corporations, associations or organizations that manufacture or
sell equipment, material or services to land improvement contractors.

Send completed application with dues (make check payable to ILICA) to any ILICA member or to the corporate address above.

Individual Name: _____ Email _____

Firm Name: _____

Address: _____

County: _____ ILICA Area Number: _____

City: _____ State: _____ Zip: _____ Phone: _____



FARM PROGRESS SHOW SEES RECORD CROWDS

Once again, ILICA joins many of our partner agencies
at the 2009 Farm Progress Show in Decatur Illinois. This year’s
show brought out record numbers of attendees, which was
evident even in the Partners in Conservation tent. Many FFA
Chapters brought their students out on Wednesday, each one
sporting matching tee shirts with their school and chapter name
proudly displayed, creating waves of color moving through the
crowds.



Daily winners of the LICA denim shirt were:

- Tuesday - Marvin Sechrest of Chenoa, IL
- Wednesday - Andy Crawford of Jacksonville, IL
- Thursday - Ryan Amerman of Galva, IL

CALENDAR OF EVENTS

Illinois

Area 3 Member Meeting
 IronHustler Excavating - Peoria, IL
 October 29, 2009
 Free Catered Dinner - 6:30 PM
 Program: Rubblemaster Concrete Recycling Demo

2010 ILICA Convention & Member Meeting
 President Abraham Lincoln Hotel - Springfield, IL
 January 13 - 16, 2010

National

2010 LICA Winter Convention
Sheraton Crescent Hotel · Phoenix, AZ
 February 16 - 20, 2010

2010 LICA Summer Convention
Holiday Inn City Centre · Peoria, IL
 July 13 - 17, 2010

ADVERTISERS INDEX

| | |
|---|----|
| Central Illinois Ag. | 23 |
| Continental Western Group/Heiser Ins. | 14 |
| Fratco, Inc. | 13 |
| Martin Equipment of Illinois. | 24 |
| Midwest Auger Aerator. | 24 |
| Precision Intakes LLC. | 24 |
| Prins Insurance Inc | 9 |
| Prinsco | 5 |
| Roland Machinery Co | 2 |
| RWF Bron. | 2 |
| Springfield Plastics Inc. | 24 |
| Stadel Electronics | 11 |

SAFETY FEATURE - TRENCHING AND EXCAVATION SAFETY



Excavation and trenching are among the most hazardous construction operations. OSHA defines an excavation as any man-made cut, cavity, trench, or depression in the earth's surface formed by earth removal. A trench is defined as a narrow underground excavation that is deeper than it is wide, and is no wider than 15 feet (4.5 meters).

Dangers of Trenching and Excavation

Cave-ins pose the greatest risk and are much more likely than other excavation related accidents to result in worker fatalities. Other potential hazards include falls, falling loads, hazardous atmospheres, and incidents involving mobile equipment. Trench collapses cause dozens of fatalities and hundreds of injuries each year.

Protect Yourself

Do not enter an unprotected trench! Trenches 5 feet (1.5 meters) deep or greater require a protective system unless the excavation is made entirely in stable rock. Trenches 20 feet (6.1 meters) deep or greater require that the protective system be de-signed by a registered professional engineer or be based on tabulated data prepared and/ or approved by a registered professional engineer.

Protective Systems

There are different types of protective systems. Sloping involves cutting back the trench wall at an angle inclined away from the excavation. Shoring requires installing aluminum hydraulic or other types of supports to prevent soil movement and cave-ins. Shielding protects workers by using trench boxes or other types of supports to prevent soil cave-ins. Designing a protective system can be complex because you must consider many factors: soil classification, depth of cut, water content of soil, changes due to weather or climate, surcharge loads (eg., spoil, other materials to be used in the trench) and other operations in the vicinity.



Competent Person

OSHA standards require that trenches be inspected daily and as conditions change by a competent person prior to worker entry to ensure elimination of excavation hazards. A competent person is an individual who is capable of identifying existing and predictable hazards or working conditions that are hazardous, unsanitary, or dangerous to employees and who is authorized to take prompt corrective measures to eliminate or control these hazards and conditions.

Access and Egress

OSHA requires safe access and egress to all excavations, including ladders, steps, ramps, or other safe means of exit for employees working in trench excavations 4 feet (1.22 meters) or deeper. These devices must be located within 25 feet (7.6 meters) of all workers.

General Trenching and Excavation Rules

- Keep heavy equipment away from trench edges.
- Keep surcharge loads at least 2 feet (0.6 meters) from trench edges.
- Know where underground utilities are located.
- Test for low oxygen, hazardous fumes and toxic gases.
- Inspect trenches at the start of each shift.
- Inspect trenches following a rainstorm.
- Do not work under raised loads.

Additional Information

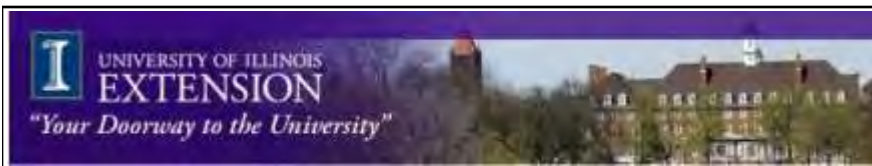
Visit OSHA's Safety and Health Topics web page on trenching and excavation at <http://www.osha.gov/SLTC/trenchingexcavation/index.html>



MAKE A COPY OF THIS PAGE TO USE
AS YOUR WEEKLY SAFETY TALK!

UNIVERSITY OF ILLINOIS PROJECTS COMPLETE

A farm pond can add more than just a scenic setting to your land. It can be very practical and may even provide a little fun reports Bob Frazee, University of Illinois Natural Resources Educator. A farm pond is environmentally friendly in that it can capture runoff water, preventing it from doing erosive damage. It can also provide water for livestock, household use, irrigation, and fire fighting. On top of this, a farm pond can offer recreation—fishing, swimming, picnicking, ice skat



Look for lots of helpful information, suggestions and ideas on Agriculture, Natural Resources & the Environment and much more on the University of Illinois Extension web-site...
<http://web.extension.uiuc.edu/state/>

LEAVES, LEAVES – EVERYWHERE!

Source: Robert W. Frazee, Extension Educator, Natural Resources Management, rfrazee@illinois.edu

As the 'ole saying goes, "What goes up, must come down" – and leaves are no exception. With the advent of the cooler autumn temperatures, many trees begin to display a magnificent display of color. However, even the prettiest colored leaves will eventually fall to the ground, although some trees, such as the oaks, will wait until late winter for leaf drop to occur. But leaf disposal should *not* present a serious problem for the homeowner, reports Bob Frazee, University of Illinois Natural Resources Educator, because there are a variety of uses for them.

How many leaves might a typical homeowner have to rake this fall? Well, Frazee reports that an ordinary, mature tree may have as many as a quarter of a million leaves on its branches. So, if you live on a one-half acre lot and have 10 mature trees.....well, try not to think about it!



Leaves make an excellent mulch beneath trees, shrubs and other landscape plantings. As compared to fresh green grass clippings, Frazee suggests that tree leaves that drop in the fall are relatively dry and can be used as mulch with little or no odor problems. Leaves collected in the fall with a lawn mower bagger will contain some grass clippings. Frazee reports that this mixture of leaves and grass can also be used as a mulch without odor problems.

Leaves are also an excellent source material for compost. The microorganisms found on leaves are sufficient to start the composting process. When placed in a compost pile in the presence of adequate moisture, leaves will decompose into an excellent organic soil amendment that can be used as a soil conditioner.

According to research studies, leaves from different tree species will decompose at different rates, but the product is the same. Leathery leaves such as oak leaves contain more lignin and other woody substances and therefore take longer to decompose than fine-textured leaves. Leaf decomposition can be accelerated by increasing the surface area by mowing the

leaves while they are being collected or shredding them after collection.



Another tip from Frazee is that leaves collected in a lawn mower bag will contain some grass clippings. Since they contain more nitrogen than the leaves, they will help to increase the rate of decomposition. Additional nitrogen will also speed the rate of composting.

Dry leaves will require moisture for composting. In early autumn, leaves will have a moisture content of 30-40%. Late season leaves will have less than 20% moisture. Leaf composting proceeds best with 40-60% moisture. It is a good idea to use a garden hose to wet leaves that are to be composted. Since fresh grass clippings contain 60-70% moisture, they can be mixed with leaves to provide moisture. If the compost pile begins to smell, it is an indication that it is too wet.

Oxygen is needed for aerobic decomposition to occur. Frazee cautions that if the oxygen supply is too low, anaerobic decomposition will occur and the compost pile will begin to smell. This problem can be corrected by turning the pile to add more air.

As leaves decay, they produce heat. The heat of an active compost pile will peak at 140 – 150 degrees Fahrenheit (F). When the temperature of the compost pile begins to decrease it is time to turn the pile. Ideally, the turning process should be repeated three to four times to get finished compost. Once the leaves turn into leaf compost, Frazee recommends that it be used as a soil conditioner to improve the tilth and fertility level of soils in the yard and garden.



A few examples of the many different styles of compost containers.



Application for CONTRACTOR Membership Illinois Land Improvement Contractors Association



P.O. Box 474 • Brimfield, IL 61517 • Phone (309) 446-3700 • Fax: (309) 446-3744 • janet@ilica.net

_____ hereby makes application for Active Membership in the ILLINOIS LAND IMPROVEMENT CONTRACTORS ASSOCIATION, INC., (ILICA) and enclose Two Hundred ninety-five Dollars (\$295) as my annual membership dues for the year _____. One dollar (\$1.00) of this amount is for a subscription to the "ILICA News", a bi-monthly newsletter, for one year.

Dues are \$295

One hundred sixty dollars (\$170) for Illinois Membership plus
One hundred twenty five dollars (\$125) for National Membership

Send completed application with dues (make check payable to ILICA) to any ILICA member or to the corporate address above.

Individual Name: _____ Date of Birth: _____

Spouse: _____ Firm Name: _____

Address: _____

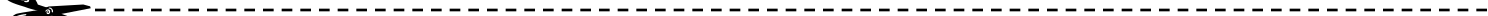
County: _____ ILICA Area Number: _____ Sponsor: _____

City: _____ State: _____ Zip: _____

Phone: _____ Email Address: _____

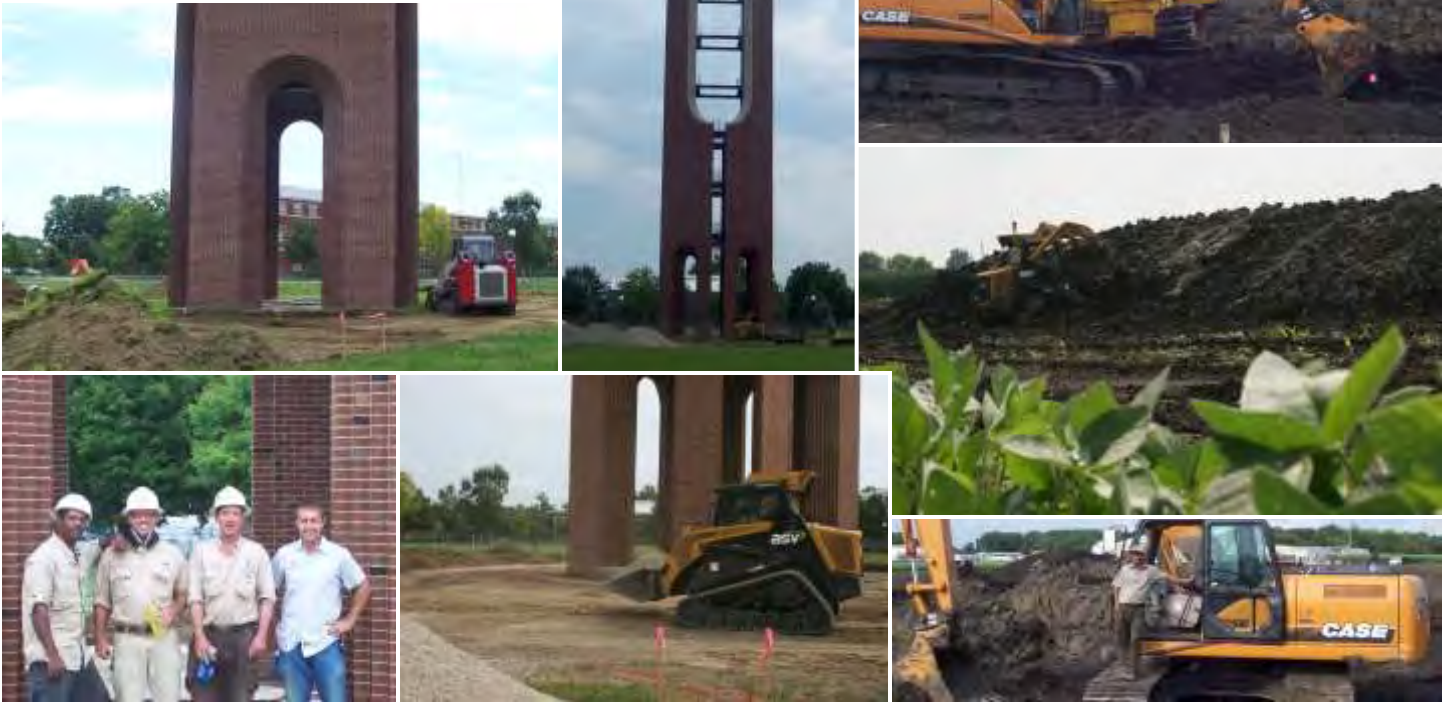
Check All Services Provided

- CUI-Cable/Utility Installation
- DB-Directional Boring
- DI-Drainage or Irrigation
- DWM-Drainage Water Mgmt
- EC-Erosion Control
- EMC-Earthmoving/Land Clearing
- EXG-Excavating or Grading
- GR-Gravel/Rock Production
- LL-Land Leveling
- LS—Landscaping
- ODW-Open Ditch Work
- OSW-On Site Waste Treatment
- PD-Ponds / Dams
- RBD-Road Boring/Drainage
- R-Reclamation
- SA-Service Co (Government, Insurance Agency, Dealer)
- SEP-Septic Systems
- SP-Site Prep
- SWU-Sewer/Water/Underground Utilities
- TH-Trucking or Hauling
- TW-Terraces & Waterways
- WM—Water Management
- Other: _____



UNIVERSITY OF ILLINOIS PROJECT PHOTOS

(See article on page 20 of this issue)



Inside front cover, top left to lower right: Steve Kool, Bill Doubet, Gary Harms & Sam Wettstein at the D & L Drainage sponsored green. Randy Little, Brent Breedlove, Sam Beard & Michael Vanderveer at the J.D. Construction sponsored green. Three trains of golf carts head out for the 1:00 Shotgun start.

Inside front cover, top left to lower right: Steve Kool, Bill Doubet, Gary Harms & Sam Wettstein at the D & L Drainage sponsored green. Randy Little, Brent Breedlove, Sam Beard & Michael Vanderveer at the J.D. Construction sponsored green. Three trains of golf carts head out for the 1:00 Shotgun start.

Below: A sample of the many businesses that supported the 1st Annual Area 3 Golf Outing.



SOME OF OUR GOLF SPONSORS



Your Supplier for Quality Drainage Products
 Fast Deliveries & Knowledgeable Staff
 Complete Line of **HEAVIEST FITTINGS**
 on the Market



100% Certified
VIRGIN Resin Only

*Quality You Can Count On,
 The Treatment You Deserve*

800-252-3361 www.spipipe.com

ILICA Supporter for 31 Years

DEERE, MARTIN & TRI-STATE
THREE NAMES YOU CAN DEPEND ON!

INDUSTRIAL EQUIPMENT
SALES, SERVICE, RENTALS
AT 9 LOCATIONS

| | | |
|---------------------------------|---------------------------------|----------------------------------|
| Goodfield, IL 309-965-2502 | Springfield, IL 217-528-4347 | Tolono, IL 217-485-6755 |
| Rock Island, IL 309-787-6108 | Peru, IL 815-224-4711 | Cedar Rapids, IA 319-365-0515 |
| Dubuque, IA 563-588-1950 | Ashland, MO 573-657-2154 | Palmyra, MO 573-769-2274 |

BEST TOTAL SUPPORT



MARTIN EQUIPMENT OF ILLINOIS, INC.
 MARTIN EQUIPMENT OF IA-IL, INC.
 TRI-STATE CONSTRUCTION EQUIPMENT CO.

Precision Intakes
 Full Line of
Surface Water Intakes

- 8" & 10" riser with patented 8" & 10" combination Tees.
 Also 6" square & round risers with patented reducing Tee.
- Constructed of heavy-weight, high-density polyethylene.
- Parts highly adjustable & interchangeable with others on the market.
- Orifice plate placed at tee level or at ground level.
- Exclusive locking device on each part.
- User Friendly-Priced effectively.
- Adaptor available to repair old metal or broken intakes.



Why inventory 2, when 1 serves both!



"Dealer Inquires Welcome"

PRECISION INTAKES

Norm & Coretha Rozendaal

2064 Republic Ave West
 Monroe, IA 50170

(800) 932-7611

(641) 259-2651

(641) 259-3218 Fax

"LIFE'S SHORT—DIG FAST!"

BUCKEYE 7200 MAGNUM



- STATE-OF-THE ART DESIGN
- HIGHER PRODUCTION
- BETTER BUILT

MIDWEST AUGER-AERATOR

AUGER BACKFILLERS / WHEEL TRENCHERS
 AUTHORIZED DEALER — BUCKEYE / SPEICHER
 1-800-232-7008

