

---

# ILICA



# NEWS

---

**Land Improvement Contractors Of America · Illinois Chapter**

*November - December 2014*

David Kennedy  
*Chairman of the Board*

David Haag  
*President*

Tom Beyers  
*Vice President*

Vacant  
*First Vice President*

Janet Burtle-Doubet  
*Secretary*

Bill Dean  
*Treasurer*

***Directors***

Brian Brooks  
Wayne Litwiller

Steve Anderson  
Stuart Anderson

Grant Curtis  
Mike Yordy

Lee Bunting  
John McCoy

Brent Breedlove  
Joe Streitmatter

Scott Day  
Jon SeEVERS

John Barttelbort  
Doug Nicholson

Paul Halter  
Norm Kocher

Janet Burtle-Doubet  
*Executive Director*

## 2015 ILICA CONVENTION JANUARY 15 - 17, 2015

*(page 6-7)*



### Also Featured Inside:

**Area 8 Membership Meeting Schedule** *(page 10)*

**Extension Connection: Estimating Drainage Benefits From Historic Yield Data** *(page 12-13)*

**2015 National LICA Winter Convention** *(page 14-15)*

### Upcoming Events:

Area 8 Members Meetings -  
**Dec. 3, 4 - Exact Location TBA**

ILICA Winter Convention -  
**Jan. 15-17 - Embassy Suites, East Peoria, IL**

---

Return To: Illinois LICA  
P.O. Box 474  
Brimfield, IL 61517

# LADIES ACTIVITY FOR 2015 WINTER CONVENTION!



BEFORE

AFTER

Just look at what Holly Yordy can turn a cold, bleak front entrance into with landscaping software. If there is a spot you'd like to see a complete "Make-Over" on, like this beautiful home shown here, you are in luck!

Holly has agreed to do a landscape session for our ladies at convention that will transform their "before" photos into a landscaping "works of art". But she will need a little help to prepare for this interesting session.

Take a photo of your project area and jot down a little information about your goal for the space; things like which direction (N-S-E-W) it faces, how much sun/shade it gets during a day, ... that sort of thing and email the full-resolution photo and information to the ILICA office (janet@illica.net) or directly to Holly at (hollyo02@hotmail.com). You may not even recognize your own project in January!

## JCG MIDWEST

DRAINAGE PRODUCTS

\*\*A ONE-STOP-SHOP FOR ALL YOUR DRAINAGE NEEDS!\*\*

Located directly off of US Rt. 51 at:  
**2700 North Main St. - Moweaqua, IL 62550**  
**(217) 768-3040**

Email: [JCGMidwest1@gmail.com](mailto:JCGMidwest1@gmail.com) Website: [WWW.JCGMIDWEST.COM](http://WWW.JCGMIDWEST.COM)

 <b>PIPE:</b> <ul style="list-style-type: none"> <li>• MAXI COILS</li> <li>• DUAL WALL</li> <li>• SINGLE WALL</li> <li>• FITTINGS</li> <li>• PVC</li> <li>• CORRUGATED METAL</li> </ul>	 <b>ACCESSORIES:</b> <ul style="list-style-type: none"> <li>• RISERS</li> <li>• FABRIC</li> <li>• SHOVELS</li> <li>• PROBES</li> <li>• TILE CUTTERS</li> <li>• WATER CONTROL STRUCTURES</li> </ul>	 <b>EQUIPMENT:</b> <ul style="list-style-type: none"> <li>• TRENCHER PARTS                             <ul style="list-style-type: none"> <li>◦ CHAINS, ROLLERS, CUTTERS, TEETH, SPROCKETS, CONVEYOR BELTS AND MORE</li> </ul> </li> <li>• TILE CARTS</li> <li>• MAXI SPOOLS</li> </ul>
---	--	---



LET US HELP YOU SAVE TIME BY USING OUR DELIVERY SERVICE!

\* ILICA SUPPORTER \*

# Great Lakes Inter Drain



2951 East State Street • Fremont, OH 43420

Your U.S. Distributor for:

Inter-Drain Trenchers and Plows

New and Used Equipment

Advanced Geo-Positioning Solutions (GPS)

for Survey and Total Machine Control

AFT Add on Trenchers • Laser Systems

Weichmann Chain, Cutters etc.

"We have the field experience you can depend on after the sale."



ADVANCED GEO POSITIONING SOLUTIONS, INC.

For more information call:

(800) 767-1904 or (419) 332-1904

Fax: (419) 332-2344



Visit us on the web at: [www.greatlakesinter-drain.com](http://www.greatlakesinter-drain.com)

or email: [sales@greatlakesinter-drain.com](mailto:sales@greatlakesinter-drain.com)

# The ILICA News



Editor / Advertising Manager  
**Janet Burtle-Doubet**

Chairman of the Board  
**David Kennedy, Colfax**

President  
**David Haag, Kempton**

Vice President  
**Tom Beyers, Odin**

1st Vice President  
**Vacant**

Secretary  
**Janet Doubet, Williamsfield**

Treasurer  
**Bill Dean, Mattoon**

Educational Advisor  
**Professor Richard Cooke  
University of Illinois**

The *ILICA News* is the official publication of Illinois Land Improvement Contractors Association, Inc. at 118 E. Knoxville St., Brimfield, IL 61517. (309) 446-3700.

Subscription price is \$50.00 per year, issued bi-monthly: Jan.-Feb.; Mar.-Apr.; May-June; July-Aug. Sept.-Oct.; Nov.-Dec., and also includes one annual directory.

## FEATURES

- Ladies Activity For 2015 Winter Convention . . . . . 2
- ILICA Convention & Members Meeting Registration . . . . . 6
- Walk Down The “Red Carpet” To The 2015 ILICA Convention . . . . . 7
- The Tradition Behind The ILICA Awards Banquet . . . . . 9
- Area 8 Member Meeting Schedule . . . . . 10
- Illinois Contractors Among Those Selected For UFG Photo Shoot . . . . . 11
- 2015 National LICA Winter Convention Tentative Agenda . . . . . 14
- 2015 National LICA Winter Convention Registration . . . . . 15
- LICA Asks EPA To Withdraw Its “Waters of the U.S.” Proposal . . . . . 21
- 2015 Illinois Conservation Cropping Seminars Planned . . . . . 22

## COLUMNS

- Board Meeting Notice . . . . . 3
- Presidents Message . . . . . 4
- New Members . . . . . 5
- ILICA Ladies Page: The Lowdown on Cholesterol . . . . . 8
- The Extension Connection . . . . . 12-13
- 2014 Committee Members. . . . . 16
- Member Application . . . . . 17
- Featured LICA Benefit: FREE Convention Registration . . . . . 18
- Advertisers Index . . . . . 19
- Calendar of Events . . . . . 19
- Safety Feature: Cold Weather Safety . . . . . 20

### The LICA Creed



Land, the foundation of the Nation  
 The basis of all wealth  
 The heritage of the wise  
 The thrifty and prudent  
 The poor man’s joy and comfort  
 The producer of food, fiber and fuel  
 The basis of factories  
 The foundation of banks

All that man builds is from the land. We often take it for granted or even abuse it; And yet many, unthinkingly and unknowingly pass the land by. What man does with the land will be the deciding factor of his survival.



### Meeting Notice

**Board & Member Meeting Notice**  
**Friday, January 16, 2015**

**Embassy Suites Hotel & Conference Center**  
**100 Convention Center Drive, East Peoria**  
**Final Board of Directors - 1:15 pm**  
**Member Meeting - 1:30 pm**

*Map & Directions on page 19*



## PRESIDENT'S MESSAGE

Greetings from Kempton!!

I hate to admit it, but we've had a few snow flurries and if you are like me, it's too early; there are several jobs to complete before the ground gets frozen. We all need to get as much done as possible before the weather breaks.

We have had another successful year: increased membership, convention, workshops, golf outings, just to name a few. Steve Anderson will take the helm of the National LICA and will be installed in Tampa next February. We offer him our sincere congratulations and Illinois LICAs' support.

As far as the Association schedule, we have 2 membership meetings in Southern Illinois December 3rd and 4th. There is more information in this newsletter and notices will be mailed soon. Please encourage your neighbors to attend because the programs are intended to inform and invite.

Mark your calendar for January 15-17, 2015. Illinois LICA has the winter convention at Embassy Suites, East Peoria. The convention, education and ladies committees are finalizing the plans to make this an informative and fun weekend. Come show your support for the association, rekindle friendships and take a few minutes to greet the associates at their booths. I'd

like to see a large attendance again this year.

As my tenure as President winds down and I look back, I wish I would have spent more time working with the committees. Illinois LICA has 225 contractor members and there is no reason why more of them can't be involved. Unfortunately, it is too easy to keep things the same but we need to allow newer members to rotate into the association, giving them a chance to become active. I feel this can encourage better attendance at our board meetings and conventions. Change is good, so going forward, look for a return to the practice of rotating committee chairs and members.

I'd like to close with a big THANK YOU to Janet for her help and guidance the past couple years. She has kept me up to date on association business, and this is absolutely necessary to keep things running smoothly.

And even though it seems a bit early to say, "Happy Thanksgiving, Merry Christmas and Happy New Year", Marsha and I wish a wonderful holiday season to all of you and I look forward to seeing everyone in East Peoria next January.

Work Safely, David Haag, President



Available in 8' or 10' width options

For Mounting on skid loaders with 3000-5500psi and 30-50GPM

**NEW!!**

Model R31

Backfiller

Adjustable Wear Plates

Side to Side tilt Standard

Universal Quick Attach Standard

Online video at: [//www.youtube.com/watch?v=MYsy5WB\\_9tE](http://www.youtube.com/watch?v=MYsy5WB_9tE)

[sales@brownbearcorp.com](mailto:sales@brownbearcorp.com)

[www.brownbearcorp.com](http://www.brownbearcorp.com)

**BROWN BEAR**  
Brown Bear Corp., Corning, Iowa 50841 (641) 322-4220

# NEW MEMBERS

# Welcome!

## Contractor Members

**Paul & Elmer Lanz**  
**Lanz Bros. Farm Drainage**  
28785 E. 300 W Road  
Strawn, IL 61775  
Ph: 815-688-3342

**Adam Romero**  
**Romero's Outdoor Services**  
515 Villa Drive  
Belleville, IL 62223  
Ph: 618-416-0862  
Email: adam@romerosoutdoorservices.com

## Associate Members

**Chase Environmental Services**  
**Douglas J. Ebelherr**  
P.O. Box 8444  
Rockford, IL 61126  
Ph: 815-761-3842  
Email: dougebelherr2@aol.com

# Thank You!



**New Contractor Members  
Receive FREE  
Convention Registration!**



# ENVISION

INSURANCE GROUP

Owned and Operated by

**Miller Dredge Insurance**

Envision Insurance Group would like to announce the addition of **Dawn Thurston** to our personnel located at the 300 East War Memorial Drive location in Peoria. Dawn is licensed in all lines of insurance & specializes in Personal Insurance exposures. She has over 24 years experience in the insurance marketplace and earned the **Certified Insurance Services Representative (CISR)** designation in 2012. Dawn can be reached at **(309) 685-6606**.



United Fire Group's state LICA insurance program is designed for dirt-moving contractors and includes:

- Coverages tailored to your business needs.
- Safety group dividends.
- Preferred pricing, and ...
- Professional loss control services

*America's most complete manufacturer and supplier of products for drainage water management, wetlands, ponds, lakes, erosion control, and land improvement*



## Agri Drain CORPORATION

Call for your FREE catalog today!

800-232-4742

www.agridrain.com

info@agridrain.com

"Like" us on Facebook



"Follow" us on Twitter



# Registration Form

## Illinois LICA Convention & Members Meeting

### January 15 - 17, 2015

## Embassy Suites Hotel & Conference Center - East Peoria, IL



Get ready to walk down the "Red Carpet" to this year's Illinois LICA Convention! Come out and see the stars at Thursday evening's kick-off dinner! Make Your Reservations Today! Call 309-694-0200 and ask for Global Reservations or visit [www.embassysuiteseastpeoria.com](http://www.embassysuiteseastpeoria.com) and mention the **IL Land Improvement Block** and enter code **ILI**. Please make your reservations before **December 24, 2014** to make sure you get our guaranteed room rate of \$109.



Return completed registration form to: Illinois LICA ° P.O. Box 474 ° Brimfield, IL 61517 ~ Or fax to: (309) 446-3744

### Pre-Registration for the ILICA Convention – January 15 - 17, 2015

Attendee Name: \_\_\_\_\_ Spouse's Name: \_\_\_\_\_  
 Address: \_\_\_\_\_ City: \_\_\_\_\_ State: \_\_\_\_\_  
 Company Name: \_\_\_\_\_  
 Additional Name(s): \_\_\_\_\_, \_\_\_\_\_

**Price of registration includes all meals & activities listed in program, unless otherwise noted.**

Total Enclosed: \$ \_\_\_\_\_ (Make check payable to ILICA)



**Educational Sessions • Exhibits • CAT Welcome Center Reception • Door Prizes  
 Live Auction • Ladies Program • Riverfront Museum Tour • Awards Banquet**

**Pre-Registration Fee:  
 Must be received in our office by January 2, 2015**

Full Participation (3 days)	One Day Participation
Individual \$185	Individual \$ 85
Couple \$285	Couple \$130
Child (under 12) \$ 75	Child (under 12) \$ 45

**Cost of Registration after January 2, 2015**

Full Participation (3 days)	One Day Participation
Individual \$225	Individual \$110
Couple \$325	Couple \$160
Child (under 12) \$100	Child (under 12) \$ 60

(Indicate which day(s) and meals you plan to attend)

<p><b>Thursday</b>   <input type="checkbox"/> <b>All Meals or</b>  <input type="checkbox"/> Lunch  <input type="checkbox"/> Dinner</p>	<p><b>Friday</b>   <input type="checkbox"/> <b>All Meals or</b>  <input type="checkbox"/> Breakfast  <input type="checkbox"/> Lunch  <input type="checkbox"/> Caterpillar</p>
<p><b>Saturday</b>   <input type="checkbox"/> <b>All Meals or</b>  <input type="checkbox"/> Breakfast  <input type="checkbox"/> Lunch  <input type="checkbox"/> Dinner</p>	

**I (We) Plan To Attend: CATERPILLAR®**

**Friday**

Ladies Day Outing \_\_\_\_\_ #

CAT Visitors Center Reception \_\_\_\_\_ #

**Saturday**

Riverfront Museum Tour \_\_\_\_\_ #

The activities above are at no additional charge other than the registration fee for that day. Transportation is provided.



**Special Dietary Needs**

---



---



---

**Afternoon "On Your Own" Activity**



*We're considering an alternate activity for the ladies for Thursday or Saturday afternoon. Please let us know if you would be interested in a glass blowing demonstration which may include a glass item to take home. And although transportation is not provided, it's not that far from the hotel.*

Yes, I (we) are interested! \_\_\_\_\_ #

*(Additional fee required)*

# WALK DOWN THE "RED CARPET" TO THE 2015 ILICA CONVENTION



**JANUARY 15 - 17, 2015**

## Wednesday, January 14th

- 5 - 6 pm** Registration Open
- 6 - 8 pm Exhibitor Set up

## Thursday, January 15th

- 8 am - 4 pm Registration
- 8 - 10 am Continental Breakfast - registration area
- 8:30 am** Exhibits Open (Open through 7:30 pm)
- 9:45 - 11:00 am** Education: **JULIE & Ameren Gas Compl**
- 12 Noon Lunch (New members announced)
- 12:30 pm** Amber Bosma - UFG Insurance Program Update & Introduction to the LICA Portal
- 2 pm Exhibitor Group Photo
- 2 - 4 pm** Ladies: Ladies Hospitality Room Open Refreshments & Games
- 2 - 3 pm** Education: Chris Haring, Stream Research Design and Restoration
- 3 pm Break
- 3:15 - 4 pm** ADMC Update - Steve Baker
- 4:15 pm Nomination Committee
- 4:30 pm Awards Committee
- 5 pm Hospitality Hour in Exhibit Hall
- 5:45 pm Convention Chair Welcome
- 6 pm** Convention Kick Off Dinner
- 7 pm** Silent auction closes
- 7:15 pm** LIVE Auction
- 9 pm - 1 am Associate Hospitality Rooms Open

## Friday, January 16th

- 7:30 am Devotions
- 8:15 - 9 am Breakfast
- 8 to 11 Registration

This year's convention theme is the "Red Carpet." Thursday evenings' kickoff will be a star studded event to be sure! Conjure up your favorite movie star or TV personality ... or just show up dressed for the glitz and glamour.



## Friday, January 16th (cont.)

- 8 am - 12:30 pm** Exhibits Open
- 9 am - 3 pm** Ladies Day Activities - Step-by-step painting session at "the Hive" in the Historic Riverfront Art District; Lunch at "Salt" in Peoria Heights followed by shopping in the many boutiques within a block of the restaurant. Transportation included.
- 10 am - 4 pm** Open exhibit time for septic contractors attending the Chase Environmental Services Septic Workshop (3 CEU's approved ) after lunch; Raised Filter Bed Installation and other sessions TBA
- 10 am Committee Chairs, Directors & Officers
- 11:45 am Lunch
- 12:15 pm** Dan McNichol - Dire States (Case)
- 1:15 pm Final Board of Directors Meeting
- 1:15 pm Associates Committee Meeting
- 1:30 - 3 pm Exhibit tear down
- 1:30 pm Members meeting & Election of Officers
- 2:30 pm Break
- 5 - 9 pm Reception at CAT Welcome Center (self-tour 5-7 pm; drinks/hors d'oeuvres 6 - 8 pm)
- 9 pm - 1 am Associate Hospitality Rooms Open

## Saturday, January 17th

- 7:30 am Devotions
- 8:15 - 9 am Door Prize Breakfast
- 9:15 - 10:15 am** Education: Dustin Courson, CPA
- 10:15 Break
- 10:30 - 11:30 am** Education: Tom Bledsoe, Bledsoe Financial Engineering
- 10 am** Ladies: EXTREME Landscaping Makeover! Holly Yordy
- 12 Noon Lunch
- 1:30 pm Riverfront Museum Tour
- 5 pm Hospitality Hour
- 5:30 pm** Photos: Officers, Directors & Members
- 6 pm Awards Banquet
- 7:30 pm** Awards Ceremony
- 8:30 pm - 12 am Presidents Hospitality Room Open

# ILICA LADIES PAGE

Source: *Healthy Women*  
[www.healthywomen.org](http://www.healthywomen.org)  
 By: *Suzanne Steinbaum, DO*

## The Lowdown on Cholesterol



No one wants to hear those dreaded words "high cholesterol" from the doctor. A known risk factor for heart disease, a high cholesterol diagnosis is a wakeup call for many. Luckily there are simple steps women can take to not only lower cholesterol and in turn cardiovascular disease risk, but also to live a healthier life overall.

The most important thing to know about cholesterol is that it's all about balance. The body needs cholesterol to make hormones, vitamin D and substances that help the body digest food. Cholesterol is carried through the body by low-density lipoproteins (LDL) and high-density lipoproteins (HDL), and maintaining a proper balance in the blood stream prevents buildup in the arteries. Triglycerides, another component of the cholesterol panel, are directly related to carbohydrates and simple sugars in the diet and can be a greater risk factor for heart disease, especially for women.

Here are some ways to help maintain that balance and keep cholesterol in check:

- Get moving. Regular, moderate exercise helps to raise HDL levels, otherwise known as the "good" cholesterol. There are an infinite number of ways to get moving—the trick is to find an enjoyable activity and make it part of a daily routine. Something as simple as walking 30 minutes a day can help most women achieve their heart health goals.



- Beware the "bad" fats. Saturated fats are what cause LDL, or "bad" cholesterol, levels to go up. Most saturated fats can be found in animal fat and processed meat. So opt for mushrooms or broccoli in lieu of pepperoni or sausage as pizza toppings.



- Go "fishing" for your good fats. A major misconception is that all fats are bad, but this is not true. Good fats, such as heart-healthy omega-3s, are beneficial in lowering cholesterol. In-

stead of eating a lot of red meat, consider serving fish—such as salmon or tuna—which are not only low in saturated fat, but also are good sources of omega-3s. The American Heart Association recommends eating at least two servings of fish a week.

- Consider supplements when diet is not enough. Increasing cholesterol-lowering fats by adding more omega-3s through foods is a good first step. However, for many, it can be difficult to get enough omega-3s through diet alone. There are heart-healthy, omega-3 supplements available that can help women achieve optimal intake.
- Think twice before lighting up. The negative impact of smoking is no secret, and smokers are at an increased risk for heart disease. In fact, smoking actually lowers HDL levels in your body. So kick the habit!



*Suzanne Steinbaum, is director and attending cardiologist at Women and Heart Disease Center, Lenox Hill Hospital in New York. She is an expert in cardiology and internal medicine, with subspecialties in prevention, women and heart disease. She is also the medical director for Events of the Heart, a spokesperson for the American Heart Association and cofounder of the Global Nutrition & Health Alliance.*

### PRINSCO: YOUR LONG HAUL PLANNING PARTNER

As a leader in the agriculture water management industry for over 35 years, we've seen you through plenty of highs and plenty of lows. Prinsco is in it with you for the long haul. We offer a full line of quality products with the experience and technical expertise that comes from a strong history in the industry. Prinsco is your planning partner.

Call 800.992.1725 today!



GOLDLINE



GOLDLINE  
MAXIS



ECOFL0100



GOLDFLO



MAXI STRINGER  
TRAILERS



ACCESSORIES &  
FITTINGS

WATER MANAGEMENT SOLUTIONS SINCE 1975

800.992.1725 | [www.prinsco.com](http://www.prinsco.com) | [agblog.prinsco.com](http://agblog.prinsco.com)



ENGINEERED WITH INTEGRITY





## THE TRADITION BEHIND THE ILICA AWARD'S BANQUET



The Awards banquet that closes every ILICA winter convention is an evening steeped in time-honored tradition. From the opening procession recalling the immortal words of Woody Guthrie to the lighted candle on the black covered table, representing all those that have been lost, it is

a celebration that a person has to see to truly understand and appreciate. Of course, it is also the time when individuals who have selflessly given of their time, sweat and money are recognized for outstanding contributions.

Contractors don't volunteer for ILICA service because of the convenient hours, great pay, and fame that accompany it. ILICA contractors volunteer because of their commitment to and love of the organization ... period. It may appear that they just like operating equipment, getting down in the dirt, making sure water runs downhill without causing erosion, but ILICA service is not always that clear-cut.

(above) Addie West receiving the 1974 Mrs. Contractor of the Year.  
(right) Jerry Biuso receiving achievement award from Bill Dean (Abe).

Those who have been around a while know exactly why that commitment and dedication exist, but there are many new members who have been added in the last eight years who haven't experienced a Conservation Expo like the Jerry Lewis project in Good Hope or the Charlie Bly Farm in East Peoria. They haven't worked alongside dozens of other business owners, each with very different ideas about how to operate equipment and run a business, coming together as one unit to accomplish an overwhelming task in which their own business name is never even mentioned.

Unfortunately, the days of those kind of Conservation Expos seem to be a thing of the past, but that doesn't mean that this organization still doesn't have a lot of service opportunities available. Whether it's on a committee, on the board or simply attending one of the two annual member meetings held each year to voice an opinion on the future of ILICA, contractor service is vital to our success.

Those who have been around a while understand the depth of friendship that develops when individuals work together for a common good; the knowledge that can pass both ways over a cup of coffee or a beer that far supersedes what hours of formal training might teach; and that the goal of this association is to offer all those things to all our members.



The Awards banquet pays tribute to the very essence of this organization. "Back in the day" it was a very formal and solemn evening ... these days maybe not quite so formal ... but it remains an evening that is set aside to recognize the dedication and selfless service of our members. Through that service, they honor all those past volunteers, whose service build ILICA into the professional trade association it is today.

If you know of someone that should be recognized for their efforts, please contact Award committee chair, Bill Dean or the ILICA office and let them know. ILICA wants to honor them for their service.

### Schlatter's Inc.

Intelligent Water Management™



- Wolfe Drainage Plows
- Trimble GPS Machine Control
- RTK Topo Mapping
- Water Management Design Software
- DLog Tile Mapping



[www.SchlattersInc.com](http://www.SchlattersInc.com)  
(219) 567-9158 Francesville, IN



4678 Weinmann Dr., Suite A  
Olney, IL 62450

LEE MILONE  
OWNER / MANAGER

Phone (618) 395-8046  
Fax (618) 393-4702

1-800-247-7972

"WE TAKE PRIDE IN OUR WORK AND SERVICE WHAT WE SELL"



# AREA 8 MEMBER MEETING SCHEDULE DECEMBER 3 - 4, 2014



Area 8 associate members, BM Truck Equipment and Erb Equipment Company, continue to welcome ILICA into their areas membership meetings each year. On December 3rd, the educational session cover brake adjustments at BM Truck Equipment in Olney. Lee Malone has always been a gracious host who provides an delicious meal and enjoys this opportunity to show his appreciation for his loyal customers.

On Thursday, Erb Equipment Company, another longtime membership meeting host, will welcome our guests to the Mt. Vernon area for a program on emissions, covering the Tier 3 and 4 regulations. There are still some decisions being made regarding the exact location for the Mt. Vernon meeting, however, maps and directions will be provided on the flyers and posted online. And although Larry Meddars has retired, Erb Equipment Company maintains the same commitment to the importance of these meetings. Their continued support of ILICA is truly appreciated.



Look for more detail soon, on flyers being mailed out this month as well as posted on the website at [www.ilica.net](http://www.ilica.net). Please take advantage of the convenient scheduling, free meal and encourage your neighbors to join us too. Days have gotten short and cold weather has arrived a little early this year so why not join these outstanding associates for a warm meal, good friends and these informational programs.



**Wednesday, December 3rd:**  
BM Truck Equipment ▪ 4678 Weinmann Dr. ▪ Olney, IL  
Free Catered Dinner - 6 pm: Informational Program - 7 pm

**Thursday, December 4th:**  
Erb Equipment Company ▪ Mt Vernon, Exact location TBA  
Free Catered Dinner - 6 pm: Informational Program - 7 pm

## Northland Trenching Equipment, LLC

*"We are the largest volume supplier for this type of equipment in the US"*

TRIMBLE GPS SYSTEMS



The Inter-Drain plow, three types, double link, single cantilever, or single link, each in three sizes. Cat, Cummins or Volvo power. Offset available.



Inter-Drain  
Plows & Trenchers



The Inter-Drain chain trencher. Four size choices, mechanical or hydraulic chain drive, vertical and offset available. Cummins, Volvo or Cat power.

FULL SERVICE AND REBUILDS

HUGE PARTS INVENTORY

Corporate Office  
12929 410th Avenue  
Waseca, MN 56093  
Phone: (507) 835-4214  
Fax: (507) 835-2032

Eastern Division - Indiana  
3578 North State Road 59  
Brazil, IN 47834  
Phone: (812) 835-2900  
Fax: (812) 835-2535

Email: [nte@hickorytech.net](mailto:nte@hickorytech.net)  
[www.northlandtrenching.com](http://www.northlandtrenching.com)



# ILLINOIS CONTRACTORS AMONG THOSE SELECTED FOR UFG MARKETING PHOTO SHOOT



United Fire Group has a dedicated marketing staff which allows them to produce the plethora of promotional material used by their agents for all of their programs. For the state LICA/UFG insurance program, they require several “action” shots of contractors operating equipment. So when Bruce Mosier contacted the ILICA office for possible subjects, several names came to mind.

And although our guys may not be the only contractors they used, two ILICA’s members were selected for many reasons. One was physical location, as this marketing team is driving in from Iowa and preferred options within easy driving distance of each other as well as being not too



far across the state which could make the overall trip up to a day longer. That, along with the contractors’ willingness to allow insurance people to come photograph jobsites and the variety of equipment present at those jobsites determined which LICA members were selected.

ILICA is proud to have its members included in this photo shoot and thankful for this very successful state LICA/UFG insurance program. It continues to bring in new members from insurance agencies all over Illinois and beyond.



(above) Carl Baer of Litwiller Excavating & Sam Parrott of Gallagher Heiser Insurance Agency, pose for photographer Mike Schlotterback while his daughter, Lindsie assists and UFG Marketing project manager, Alissa Carson, supervises. Mike has Cody Heaton and Brock Quart of Streitmatter Land Improvement pose for some still photos.

(above right) Bruce Mosier of Prins Insurance, Alissa Carson and Charlene Briggs of UFG and the Schlotterback’s wrapping up their visit to the Streitmatters.

## Precision Intakes Full Line of Surface Water Intakes

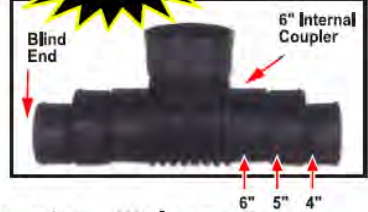
- 8" & 10" riser with patented 8" & 10" combination Tees. Also 6" square & round risers with patented reducing Tee.
- Constructed of heavy-weight, high-density polyethylene.
- Parts highly adjustable & interchangeable with others on the market.
- Orifice plate placed at tee level or at ground level.
- Exclusive locking device on each part.
- User Friendly-Priced effectively.
- Adaptor available to repair old metal or broken intakes.

Type II Riser—  
6" & 10" Trash  
Baskets with  
marker cup feature



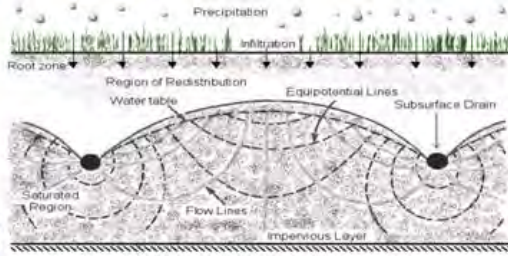
Why inventory 2, when 1 serves both!

PATENTED  
REDUCING TEE



"Dealer Inquires Welcome"

**PRECISION INTAKES**  
Norm & Coretha Rozendaal (800) 932-7611  
2064 Republic Ave West (641) 259-2651  
Monroe, IA 50170 (641) 259-3218 Fax



# The Extension Connection

## ESTIMATING DRAINAGE BENEFITS FROM HISTORIC YIELD DATA

Source: Richard Cooke & Students

Whenever a producer is considering installing a drainage system on a field, it is usually because of the perception that doing so will increase yield. In many instances, the existence of drowned out sections of the field with little or no yield, or of a field with low yield relative to neighboring fields, are clear indicators of the benefits that can accrue from drainage. However, in other instances, the benefits from drainage might not be so obvious.

The Yield Analysis routine in the Illinois Drainage Guide may be used to estimate drainage benefits. The interface for this routine is shown in Figure 1. It may be accessed at <http://www.wq.illinois.edu/dg/Equations/yields.exe>. It can be used to compare the yields from two fields, two sections of a field, or one field in different years. The user has the option of excluding extremely high yields, extremely low yields, or both. The routine provides yield histograms and determines if the shape of these histograms are sufficiently close to the bell curve,

in order to determine if the mean or the median yield is the more representative measure of field performance. The routine also provides information on yield variation, and can also be used to determine the relationship between yield and other variables in a yield file, such as combine speed or elevation. Rather than requiring the use of proprietary yield files, the routine requires the use of shapefiles. Data from most yield monitoring systems can be stored as shapefiles.



Like most of the interactive routines in the Illinois Drainage Guide, the user may be required to install one of the missing components shown in Figure 2. The program will indicate any component that needs to be installed. It will also be necessary to install the MapWindow Activex control, a public-domain GIS and Map control (<http://mapwingis.codeplex.com/releases/>).

Figure 2. Location of Yield Analysis Routine and Potential Missing Components on Main Page of the Illinois Drainage Guide.

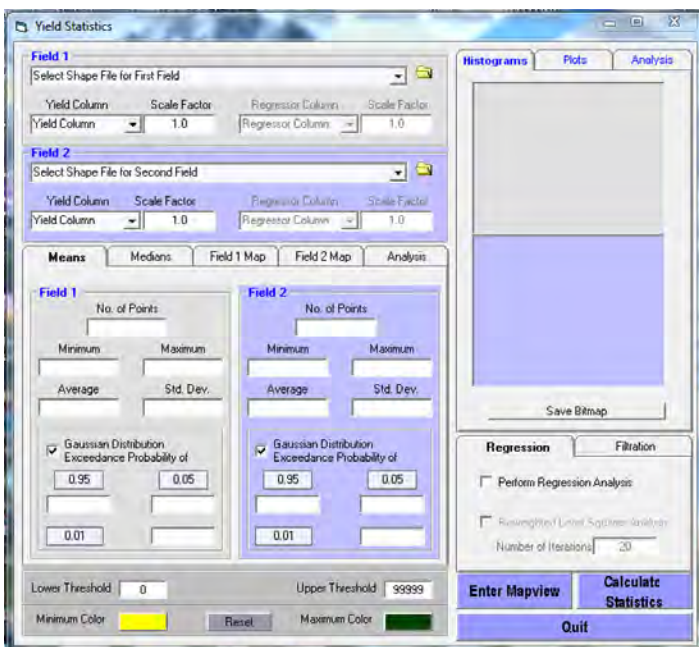


Figure 1. Interface for the Illinois Drainage Guide's Yield Analysis routine.

In the following example, the routine was used to determine the difference in yield between the highest and lowest sections of a field. In a wet year, the highest sections of an undrained field will most closely represent the drainage response of field. Of course one has to consider other factors, such as differences in soil type and weather patterns. It is possible to break a field up by soil type and do the analysis. In the absence of other information, the average difference in yield between the highest and lowest sections of a field in wet years may be an indicator of how drainage would affect yields.

# ESTIMATING DRAINAGE BENEFITS FROM HISTORIC YIELD DATA

The yield file is loaded into the routine as both Field 1 and Field 2, and Elevation selected at the variable of interest as highlighted by the red rectangles in Figure 3. When the Calculate Statistics button is pressed the boxes on the interface are populated with information such as the minimum and maximum elevations on the field, and the elevation below which 10% of the points fall, and above which 10% of the points fall. These numbers are highlighted in the red ellipses in Figure 3. In this example, the lowest 10% of the points at which yield is measured lie between 644.2' and 646.5', and the highest 10% in the 657.0' to 662.6' range.

Having established the elevation ranges, crop yield is selected as the variable of interest, as highlighted by the red rectangles in Figures 4 and 5, and statistics are calculated for the yield points in the elevation ranges highlighted by the ellipses with dashed lines in Figures 4 and 5. The mean yields for the lowest and highest 10% of the field are highlighted by the red ellipses with solid lines in Figures 4 and 5, respectively. In this instance, the highest 10% of the field yields 3.6 bushels/acre of soybean more than the lowest 10% of the field. The average over several wet years should be an indication of the yield benefit that can accrue from draining the field.

**In the next Extension Connection:**  
 In the next article we will look at the Erosion and Sediment Control Research and Teaching facility at the University of Illinois. The berm and pond at the facility were constructed by ILICA as an in-kind contribution to the university.

CONT.

The example was conducted on a field for which there were no obvious yield difference across the field. In a field with drowned out sections, the yield differences would have been greater. Many years of data are required from more fields to refine the technique.

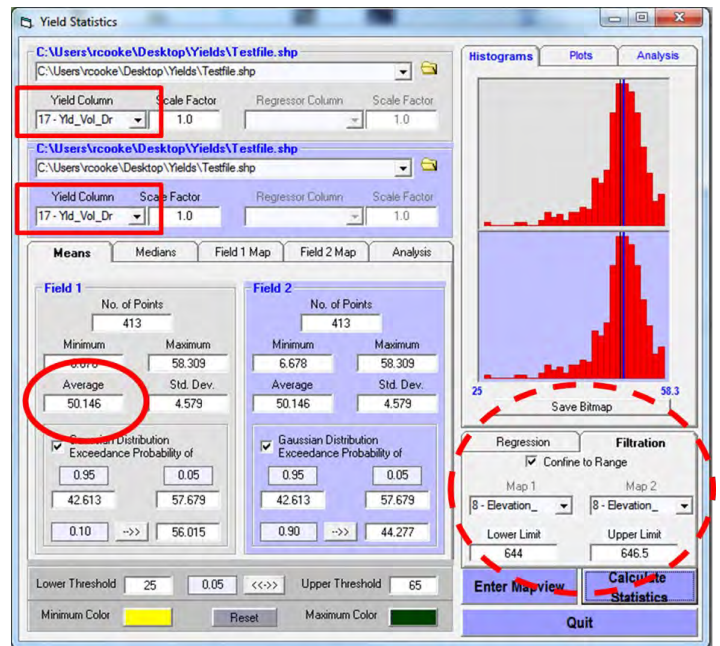


Figure 4. Determination of yield statistics for the lowest 10% of the points for which yields are measured.

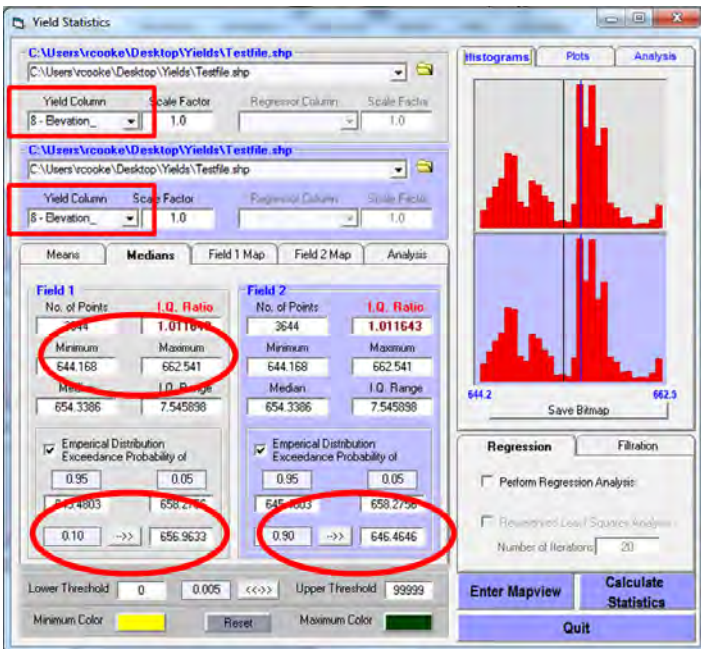


Figure 3. Determination of elevation ranges for the highest and lowest 10% of the points for which yields are measured.

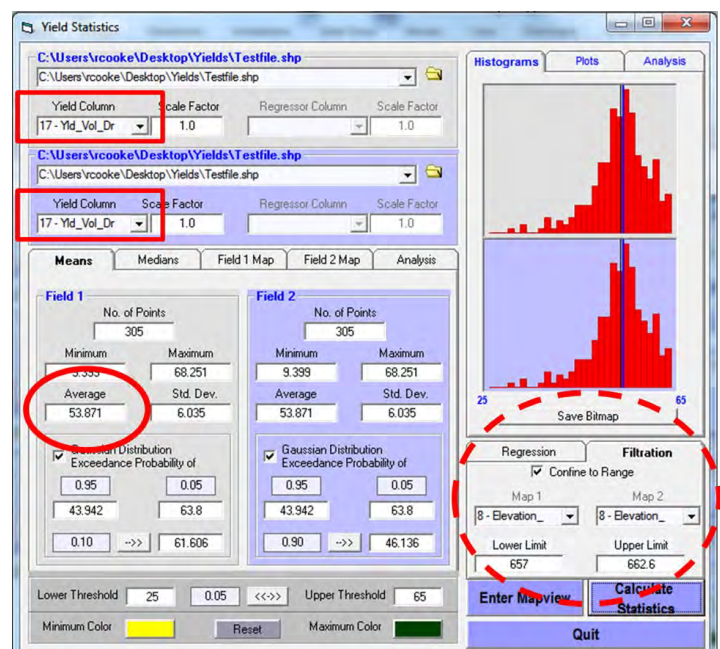


Figure 5. Determination of yield statistics for the highest 10% of the points for which yields are measured

# 2015 National LICA Winter Convention

## Tentative Agenda

### Tuesday, February 10

11:30 am - 5:00 pm Busch Gardens  
5:00 pm Executive Committee

### Wednesday, February 11

9:30 am - 5:00 pm American Victory  
FishHawk Sporting Clays  
9:30 am - 2:30 pm Ybor City Tour

### Thursday, February 12

8:00 am Educational Seminars  
(TBA)  
11:45 am Golf Outing  
2:00 pm - 5:00 pm Executive Directors  
7:00 pm - 10:00 pm Associates' Night

### Friday, February 13

7:00 am - 7:30 am Devotions  
7:30 am - 8:00 am Committee Chairs  
8:00 am Breakfast  
9:15 am - 10:15 am Education/Tech  
Devotions  
Legislative  
Water Table Mgmt..  
10:30 am - 11:30 am By- Laws  
Conservation, Exc.  
Ladies  
11:45 am - 12:45 pm Convention  
Long-Term/Past Pres.  
On-Site Waste  
Safety/Insurance  
1:00 pm Lunch  
2:15 pm - 3:15 pm Associates  
Awards  
Membership  
Policy  
Region Meetings  
4:15 pm - 5:15 pm Budget  
6:00 pm - 9:30 pm Yacht Starship  
Dinner Cruise

### Saturday, February 14

7:00 am - 7:30 am Devotions  
7:30 am Breakfast  
9:00 am - 10:15 am Delegates Meeting  
10:30 am - 11:45 am Board Meeting  
12:00 pm Lunch  
2:00 pm - 5:00 pm Yuengling Brewery Tour  
6:00 pm CNA Reception  
7:00 pm Awards Dinner



## Yacht Starship Dinner Cruise

Friday, February 13  
*Included with registration*

While aboard the Yacht Starship LICA members will cruise around Harbor Island and out into Tampa Bay. For over two hours sail the tranquil seas and take in the gorgeous views. Attendees will have the second deck entirely to themselves while they enjoy an expansive buffet. The top deck boasts even more views and a DJ to complete the experience.

# 2015 National LICA Winter Convention

## Tampa, Florida • February 10-15

Company \_\_\_\_\_

City \_\_\_\_\_ State \_\_\_\_\_

Phone \_\_\_\_\_

Email \_\_\_\_\_

Names of Attendees (for Badges)

Name \_\_\_\_\_

Name \_\_\_\_\_

Name \_\_\_\_\_

Name \_\_\_\_\_

### Early Bird Registration

**Postmarked before January 19, 2015**

**Members, Spouses, Associates** **\$265**

Number Attending \_\_\_\_\_ Total \$ \_\_\_\_\_

**Youth: 13 Years & under (Under 3 Free)** **\$245**

Number Attending \_\_\_\_\_ Total \$ \_\_\_\_\_

### Registration

**Postmarked after January 19, 2015**

**Members, Spouses, Associates** **\$295**

Number Attending \_\_\_\_\_ Total \$ \_\_\_\_\_

**Youth: 13 Years & under (Under 3 Free)** **\$275**

Number Attending \_\_\_\_\_ Total \$ \_\_\_\_\_

*Registration Includes: Associates Night, Friday breakfast, lunch, & dinner cruise; Saturday breakfast, lunch, CNA Reception & awards banquet.*

### Optional Tours

**Tues. Feb. 10**

Busch Gardens No. Attending \_\_\_\_\_  
 Cost \$95 per person Total \$ \_\_\_\_\_

**Weds. Feb. 11**

American Victory/Clay No. Attending \_\_\_\_\_  
 Cost \$80 per person Total \$ \_\_\_\_\_

**Ybor City**

Cost \$65 per person No. Attending \_\_\_\_\_  
Total \$ \_\_\_\_\_

**Thurs. Feb. 12**

Golf No. Attending \_\_\_\_\_  
 Cost \$80 per person Total \$ \_\_\_\_\_

**Sat. Feb. 14**

Yuengling Brewery No. Attending \_\_\_\_\_  
 Cost \$20 per person Total \$ \_\_\_\_\_

**Tour Total** **\$ \_\_\_\_\_**

**Convention total** **\$ \_\_\_\_\_**

*(tours plus convention registration)*

Enclosed is my check for \$ \_\_\_\_\_

*or charge my credit card*

Credit Card MC Visa

Cardholder \_\_\_\_\_

Card # \_\_\_\_\_

Exp. \_\_\_\_\_ 3 Digit Code \_\_\_\_\_

**Hotel Information:**  
**Sheraton Tampa East Hotel**  
 10221 Princess Palm Ave. Tampa, Florida 33610

**\$129/night (plus taxes)**

**Call: 888-627-8169**

**Group Name: LIB11A**

**Reserve by January 19, 2015**

**Registration Policy:** Only individuals registered and wearing badges may attend Winter Convention events. All must register to attend conventions, programs or functions. No registration will be processed without payment. Registration fee deadlines will be strictly enforced.

**Refund Policy:** For cancellations received prior to January 30, 2015 a \$30.00 charge will be deducted from the original amount paid. No registration payment will be refunded after January 30, 2015 unless there has been an emergency.

**Return this form with payment to:**  
**LICA Winter Convention**  
**3080 Ogden Ave. Suite 300, Lisle, IL 60532**

# 2014 Committees

## Associate

Brad Baker, Chair - Spfld Plastics  
 Mark Baker - Springfield Plastics  
 Chad Nicholson - Frasco, Inc.  
 John Pogge - Prinsco, Inc.  
 Dave Randolph - ADS

## Auditing

Bill Dean, Chair  
 Steve Anderson  
 Ron Masching

## Awards

Bill & Bev Dean, Chair  
 Brent & Tracy Breedlove  
 Bill & Janet Doubet

## Budget

Tom Beyers, Chair  
 Dan Day  
 Bill Dean  
 Dave Haag

## By-Laws

Stuart Anderson, Chair  
 Bill Doubet  
 Stan SeEVERS  
 Joe Streitmatter

## Certification

Vacant, Chair  
 Wayne Litwiller  
 Ron Masching  
 Prof. Kent Mitchell, retired U of I  
 Stan SeEVERS

## Certification Board

Vacant, Chair  
 Forrest Davis  
 Dave Kennedy  
 Wayne Litwiller  
 Ron Masching

## Convention

Brent & Tracy Breedlove, Chair  
 Bill Dean  
 Grant & Lindsey Curtis  
 Greg & Jennifer Furkin  
 Corey & Whitney Getz  
 Kristin Kutemeier  
 Mike & Holly Yordy

## Devotions

Jean Davis, Chair  
 Steve Anderson  
 Norm & Coretha Rozendaal

## Education

Brent Breedlove, Chair  
 Brad Baker  
 Tom Beyers  
 Richard Cooke: Univ. of Illinois  
 Corey Getz  
 Kristin Kutemeier  
 Eric Layden  
 Mike Yordy

## Executive Committee

David Haag, Chair  
 Tom Beyers, V.P.  
 Janet Burtle-Doubet, Exec. Director  
 Bill Dean, Treasurer  
 Vacant, 1st V.P.  
 David Kennedy, Past President

## Golf Outing

Wayne Litwiller/Bill Dean - Co-Chairs  
 Jerry Biuso  
 Brian Brooks  
 Norm Kocher

## Headquarters

Dan Day, Chair  
 Steve Anderson  
 Mark Baker  
 David Haag  
 Ron Masching

## Industrial & Business Relations

David Kennedy, Chair  
 Dan Day  
 Bill Dean  
 Wayne Litwiller  
 Mike Yordy

## Insurance

Dan Day, Chair  
 Charlie Adams  
 Lori Kennedy  
 John McCoy  
 Jackie Streitmatter

## Ladies

Marsha Haag, Chair  
 Judy Beyers  
 Bev Dean  
 Cathy Masching  
 Jackie Streitmatter

## Legislative

Steve Anderson, Chair  
 Tom Beyers  
 Lee Bunting  
 Bill Doubet  
 Norm Kocher  
 Joe Streitmatter  
 Mike Yordy

## Long Term Planning

Steve Anderson, Chair  
 Stuart Anderson  
 Dan Day  
 Bill Doubet  
 Ron Masching



## Membership

Wayne Litwiller, Co-Chair  
 Norm Kocher, Co-Chair  
 Steve Anderson  
 Mark Baker  
 Tom Beyers  
 Brent Breedlove  
 Brian Brooks  
 Forrest Davis  
 Dan Day  
 Scott Day  
 Bill Dean  
 Bill Doubet  
 Eugene Glueck  
 Ron Masching  
 Larry Rhodenbaugh

## Nomination

Joe Streitmatter, Chair  
 Brian Brooks  
 Dan Day

## On-Site Waste

Wayne Litwiller, Chair  
 John McCoy  
 Larry Rhodenbaugh  
 Jason Winings

## Picnic

Steve Anderson  
 Bill Dean

## Publicity

Bill Doubet, Chair  
 Mark Baker  
 Wayne Litwiller

## Safety

Doug Nicholson, Chair  
 Brent Breedlove  
 Dave Kennedy  
 John McCoy  
 Jason Winings

## Show & Other Income

Dave Kennedy, Chair  
 Brent Breedlove  
 Brian Brooks  
 Joe Krupps  
 Wayne Litwiller  
 John McCoy  
 Joe Streitmatter







## MEMBERSHIP APPLICATION

### Illinois Land Improvement Contractors Association, Inc.

118 E. Knoxville · PO Box 474 · Brimfield, IL 61517  
 (309) 446-3700 · Fax: (309) 446-3744 · Email: janet@illica.net

Company Name: \_\_\_\_\_

Member Name: \_\_\_\_\_ Spouse's Name \_\_\_\_\_

Street Address: \_\_\_\_\_

City: \_\_\_\_\_ State: \_\_\_\_\_ Zip: \_\_\_\_\_ County: \_\_\_\_\_

Phone: (\_\_\_\_\_) \_\_\_\_\_ Cell Phone: (\_\_\_\_\_) \_\_\_\_\_

Fax: (\_\_\_\_\_) \_\_\_\_\_ Email: \_\_\_\_\_

Website (if applicable): \_\_\_\_\_ LICA Sponsor: \_\_\_\_\_

#### Check All Services Provided

- |  |  |
|--|--|
| <input type="checkbox"/> CUI - Cable/Utility Inst.       | <input type="checkbox"/> OSW—On Site Waste Treatment   |
| <input type="checkbox"/> DB - Directional Boring         | <input type="checkbox"/> PD - Ponds / Dams   |
| <input type="checkbox"/> DI - Drainage/Irrigation        | <input type="checkbox"/> RBD - Road Boring/Drainage  |
| <input type="checkbox"/> DWM - Drainage Water Mgmt       | <input type="checkbox"/> R - Reclamation   |
| <input type="checkbox"/> EC - Erosion Control            | <input type="checkbox"/> SA - Dealer/Service Co./Government Agency/<br>Consultant/Insurance Agency |
| <input type="checkbox"/> EMC - Earthmoving/Land Clearing | <input type="checkbox"/> SP - Site Prep  |
| <input type="checkbox"/> EXG - Excavating/Grading        | <input type="checkbox"/> SWU - Sewer/Water/Underground Utilities                                   |
| <input type="checkbox"/> GR - Gravel/ Rock Production    | <input type="checkbox"/> TH - Trucking / Hauling   |
| <input type="checkbox"/> LL - Land Leveling              | <input type="checkbox"/> TW - Terraces / Waterways   |
| <input type="checkbox"/> LS - Landscaping                | <input type="checkbox"/> WM - Water Management   |
| <input type="checkbox"/> ODW - Open Ditch Leveling       | Other: _____   |

**Active Contractor Membership - \$295**

*(One hundred seventy dollars (\$170) for Illinois Membership plus One hundred twenty five dollars (\$125) for National Membership)*

(Active members are individuals engaged in the business of entering into contracts for performing work that will result in soil, land, natural resource conservation or rehabilitation, water conservation, control and prevention of soil erosion, depletion and misuse of natural resources and soil and water pollution and contamination.)

**Associate Membership - \$295** (Associate members are those businesses that manufacture or sell equipment, materials or services used by active members)

**Affiliate Membership - \$85** (Affiliate members are individuals employed by an active member in the business that makes the active member eligible for membership)

**Signature:** \_\_\_\_\_



## ILICA FEATURED BENEFIT

**First Year Contractor Members receive *FREE* Convention Registration**



First year contractor members receive **FREE** full participation convention registration (*that's all 3 days with all meals and activities included*) to the ILICA annual convention, being held at the Embassy Suites in East Peoria, January 15 - 17, 2015. Come for the trade show on Thursday and stay through Saturday evening's Awards banquet ... or just come on whichever day works best for your schedule, bring your spouse or partner and have lunch and dinner on us!

**But please, take advantage of this offer and come see what ILICA is all about. What do you have to lose?**



- ▶ Trade Show all day Thursday and through noon on Friday
- ▶ Educational sessions including 3 CEU's for septic license renewal on Friday afternoon, provided by Chase Environmental Services  
*(additional fee required but ILICA members receive discounted registration)*
- ▶ Dinner Reception at the Caterpillar Visitor Center including self guided tour & open bar
- ▶ Ladies Program      ▶ Awards Banquet
- ▶ Riverfront Museum Tour      ▶ Live Auction
- ▶ Caterpillar will host the Visitor Center tour and a heavy hors d'oeuvres dinner with bar on Friday evening. Transportation to and from the hotel is included. Associate hospitality rooms will be open from 9 pm to 1 am following.
- ▶ Ladies Day outing with all activities, special lunch and transportation included
- ▶ Business educational sessions on Saturday morning

- ▶ Our trade show has around 30 exhibitors, set up from Thursday morning through noon on Friday.
- ▶ All meals are included in the price of registration, which is **FREE** to new contractor members.
- ▶ Thursday evening concludes with our **LIVE** auction and there will be 3 associate hospitality rooms open from 9 pm to 1 am following
- ▶ Guest speakers following lunch Thursday & Friday

See the latest technology and materials being used in the industry today.  
Have fun, learn more about ILICA programs and take advantage of free educational sessions.

## PAUL THE GOOD LUCK BEAR & ILICA



Paul the Good Luck Bear became an annual participant in the ILICA auction many years ago and except for last year when Buck the Good Luck Duck stood in for him, he continues to be the organizations primary funding source for ILICA's membership efforts.

Membership meetings continue in Area 8 with 2 scheduled this December and ILICA will exhibit at the OWPI conference next February with Jerry Biuso in tow. Jerry was unable to attend last year's OWPI conference due to weather but he is very excited about participating in the membership opportunity this partnership offers us.



## MEMBERSHIP DRIVES

And although Paul is no longer "sold" each year, he has become synonymous with ILICA's growth, sparked years ago by Jerry Biuso and the membership committee's willingness to take a chance ... and several road trips.

So, Paul is already down off the wall where he watches over the ILICA office, excited to attend convention. To all those who have so generously given to this cause in the past, you have our sincere gratitude; and to anyone who may want to start supporting ILICA's membership efforts in this way, please know that each and every dollar is genuinely appreciated. And trust me, Paul will NOT be left behind this year!

# CALENDAR OF EVENTS

## Illinois

Area 8 Member Meetings

December 3, 2014

BM Truck Equipment - Olney, IL

Dinner at 6 pm: Program at 7 pm

December 4th, 2014

Erb Equipment Company - Mt. Vernon

Exact Location TBA

Dinner at 6 pm: Program at 7 pm

Illinois LICA Winter Convention & Members Meeting

Embassy Suites Hotel - East Peoria, IL

January 15 - 17, 2015

10-Hour OSHA & Certified Flagger Training

February 25 - 26, 2015

Ashland House Best Western, Morton, IL

## National

LICA Winter Meeting -

Sheraton Tampa East - Tampa Florida

10221 Princess Palm Avenue

February 9 - 15, 2015

# ADVERTISERS INDEX

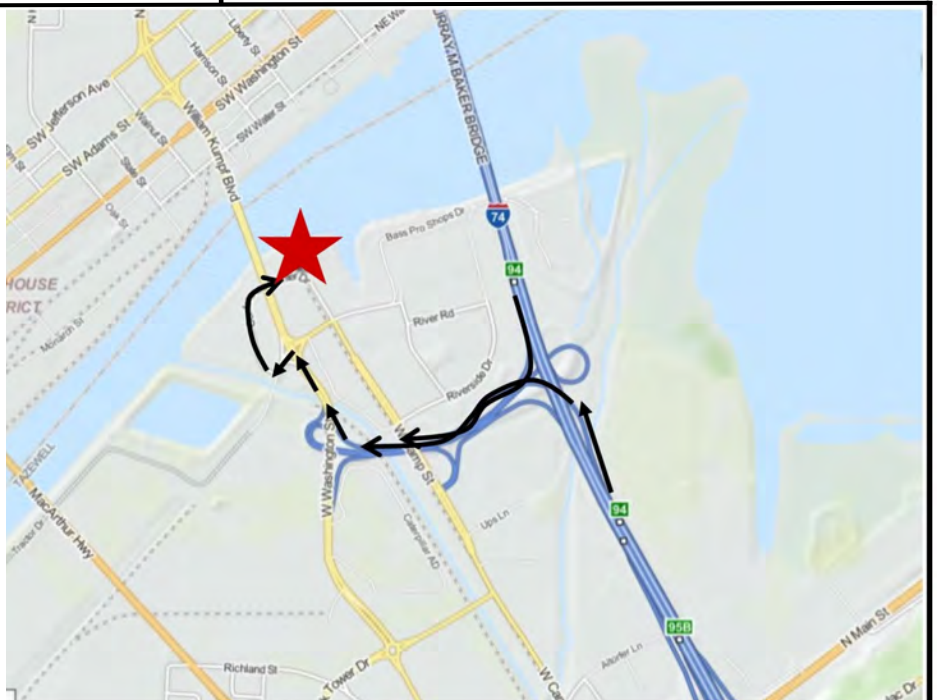
Agri Drain Corp .....	5
BM Truck Equipment .....	9
Brown Bear Corp .....	4
Envision Insurance Group.....	5
Fratco, Inc. ....	22
Great Lakes Inter Drain .....	2
JCG Midwest. ....	2
Martin Equipment of Illinois .....	24
Midwest Auger Aerator. ....	24
Midwest Plastic Products .....	23
Northland Trenching Equipment, LLC .....	10
Precision Intakes Ltd .....	11
Prins Insurance Inc./United Fire Group .....	24
Prinsco .....	8
RWF Bron .....	23
Schlatter's .....	9
Springfield Plastics Inc. ....	24

**January 16, 2015 Board & Member Meeting**  
 Embassy Suites Hotel - 100 Conference Center Drive  
 East Peoria, IL - (309) 427-2439

From I-74, take Exit 94, the Riverfront Drive Exit, and stay to the right. You will end up on Washington St, where you should be in the left lane, looking at the Bob Michaels Bridge. Take a left at the stoplight on Tractor Dr. and then turn right on Conference Center Drive, going under the bridge.

The hotel is located on your left on the Illinois Riverfront with parking available around the conference center.

At first glance, it may appear you can get there by turning directly towards the hotel, but there is a "No Left Turn" posted at that street.





# COLD WEATHER SAFETY

**DID YOU KNOW?**

When your body temperature drops, your nerve cells and muscles work more slowly, which makes you more clumsy. This is easy to notice when tying a shoelace or fastening a button in cold weather.

*This SafetySpotlight newsletter is one of the many features available on the new LICA Portal. Contact the ILICA office for more information about how to register and start upgrading your safety program TODAY!*



### BEATING THE COLD - HOW TO STAY SAFE WHEN WORKING IN COLD WEATHER

Working in cold weather puts enormous strain on your body. To fight back, try these cold-weather safety tips while working on the job:

- Securely tie down or weigh down supplies so they are safe from gusts of wind.
- Wear a hat—20 to 30 percent of your body heat is lost through your head.
- Take frequent breaks in warm, dry shelters to allow your body to warm up.
- Sweep water out of passageways inside of buildings under construction to avoid slipping.
- Clean off and sand work surfaces covered by ice or snow to prevent falling.
- Use the buddy system—always work in pairs.
- Drink warm, sweet beverages, like sugar water or sports drinks, and avoid caffeinated drinks like coffee, tea, soda and hot chocolate.
- Eat warm, high-calorie foods like hot pasta.



**Discussion Date:** \_\_\_\_\_

### Employee Participants

---



---



---



---



---



---



---



---



---



---



---



---



---



---



---



---

### FROSTBITE – A SILENT KILLER CAN YOU SPOT THE SYMPTOMS?

Frostbite occurs after prolonged exposure to low temperatures or wet working conditions. Frostbite can be dangerous and even life-threatening. That's why it is important to look for the following symptoms when working in cold temperatures:

- Burning or tingling sensations
- Partial or complete numbness
- Discoloration of the skin
- Intense pain
- Blistering
- Hard or waxy-looking skin



Frostbite darkens gradually if left untreated and will eventually turn skin black. Nerve and blood vessel damage can lead to gangrene and amputation of a limb.

To prevent frostbite, wear loose-fitting layers of clothing and always cover your hands, feet, nose and ears. At the first sign of pain or if your skin gets cold and wet, it's time to look for a place to warm up.

*Source: LICA Portal, brought to you by:*





# LAND IMPROVEMENT CONTRACTORS OF AMERICA (LICA) ASKS EPA TO WITHDRAW ITS “WATERS OF THE U.S.” PROPOSAL

Source: John Peterson, LICA

The Land Improvement Contractors of America (LICA) today joined with 375 trade associations and chambers from 50 states representing a wide range of industries to voice strong concerns with the U.S. Environmental Protection Agency (EPA) and the U.S. Army Corps of Engineers’ flawed proposed rule to dramatically expand the scope of federal authority over water and land uses across the U.S. and called for the proposal to be withdrawn. The effort was led by the U.S. Chamber of Commerce.

LICA CEO Jerry Biuso said “As the groups’ comments state, the proposed rule is really about the Agencies’ overreaching attempt to replace longstanding state and local control of land uses near water with centralized federal control. In light of the overwhelming evidence that the proposed rule would have a devastating impact on businesses, states, and local governments without any real benefit to water quality, the Agencies should immediately withdraw the waters of the U.S. proposal and begin again. The current proposed rule is simply too procedurally and legally flawed to repair.”

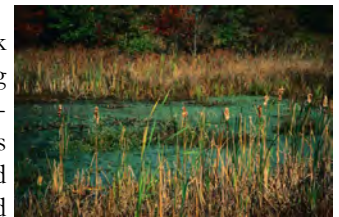
The comments detail several examples of the impacts of the proposed rule, including:

- Maps prepared by EPA show the rule could expand federal jurisdiction over waters from **3.5 million** river and stream

miles to well over **8 million** river and stream miles;

- The rule would make most ditches into “tributaries.” Routine maintenance activities in ditches and on-site ponds and impoundments could trigger permits that can cost \$100,000 or more;
- These permitting requirements would likely trigger additional environmental reviews that would add years to the completion time for ordinary projects;
- Even if a project can get a permit, firms will often have to agree to mitigate environmental “damage” with costly restoration/mitigation projects;
- The proposal would likely also result in more stringent storm water management requirements, which would affect retailers, companies with large parking lots, “big box” stores, etc.

LICA members all work hard to assist in projects ensuring we have clean water. This proposed rule significantly expands EPA’s jurisdiction far beyond what Congress intended. It would make the Clean Water Act (CWA) a land-use control act.



## Ladies Fund-Raiser T-Shirt Quilt

**TIME IS RUNNING SHORT!**

**Send In Your Business T-shirt Today!**

**Thanks to those who have already donated but we need more!**

**Send them to the ILICA Office:  
P.O. Box 474: 118 E. Knoxville St.  
Brimfield, IL 61517**

**Or Directly To:**

**Judy Beyers  
2438 Ticklen Road - Odin, IL 62870**



**Judy will need time to put everything together so this quilt is ready for the January convention ... don't delay.**

**It will make a beautiful quilt with ILICA written all over it!!**

# 2015 ILLINOIS SEMINARS PLANNED

*Conservation Cropping Seminars Back By Popular Demand!*



If you invest just twenty bucks and one day this coming winter, you can feed your curiosity and growing desire to improve productivity on your farm. Local agricultural producers and resource experts will share information and insights on soil health improvement options, cover crop success, and wise nutrient management techniques. Consider attending any of the three unique seminars planned at three Illinois locations—January 27<sup>th</sup> in Sycamore, February 4<sup>th</sup> in Mattoon, and February 18<sup>th</sup> in Macomb. To register, visit [www.ccswd.com](http://www.ccswd.com) and click on the Seminars logo to access the website.

The fee to attend is \$20, payable by check or credit card. The new Conservation Cropping Seminars were an outgrowth of popular Tillage Seminars attended by producers, Ag industry representatives, certified crop advisors, and others held over the last several years. Seminars run from around 8:30 am and end at 3:30 pm, with time to meet after and visit speakers, sponsors, and attendees in an informal networking atmosphere.

“We are pleased to work with conservation partners another year to bring this series of seminars to more locations across the state,” Agriculture Director Bob Flider said. “I hope we can

reach more farmers and agribusiness professionals who attend one of these meetings and learn how to adopt workable conservation systems on their own farms.”

“Attendance last year was strong,” said Illinois NRCS State Conservationist Ivan Dozier, “and feedback confirmed the topics and innovative speakers we offer at these sessions really meet the needs and interests of Illinois farmers.”

Seminar coordinators encourage producers near local sites register and see detailed Seminar agendas, discussion topics, and speakers. Visit the Champaign County Soil and Water Conservation District website [www.ccswd.com](http://www.ccswd.com) and click on the seminar logo. Local businesses and organizations can exhibit, serve as sponsors and reach local and new clients. See website for details.

**January 27, 2015**  
**DeKalb County Farm Bureau**  
 1350 W Prairie Dr. Sycamore, IL  
 Contact: Joe Bybee (815)787-5480

**February 4, 2015**  
**Lake Land Community College**  
 5001 Lake Land Blvd. Mattoon, IL  
 Contact: Elliott Lagacy (217) 353-6603

**February 18, 2015**  
**Student Union, Western IL University**  
 1 University Circle Macomb, IL  
 Contact: Marty McManus (309) 738-7227



Since 1923 supplying quality drainage products with service second to no one...

## Why Fratco Pipe and Fittings?

**Quality and Service. We are 100% committed to offering the best HDPE corrugated pipe and fittings to the market, with a friendly and knowledgeable staff that is dedicated to providing unparalleled flexibility and delivery, ensuring prompt and accurate order filling from our fully stocked yards.**



## Experience the Fratco Difference....

Members of:



**ST. ANNE OFFICE**  
 499 SOUTH OAK ST.  
 ST. ANNE, IL 60964  
 (815) 427-8144  
 (800) 475-8144

[www.fratco.com](http://www.fratco.com)



**MT. PLEASANT OFFICE**  
 1600 W. WASHINGTON ST.  
 MT. PLEASANT, IA 52641  
 (319) 385-1213



**FRANCESVILLE OFFICE**  
 4385 SOUTH 1450 WEST  
 FRANCESVILLE, IN 47946  
 (219) 567-9133  
 (800) 854-7120

Members of:





# Manufacturer of Quality Drain Tile Since 1972

## Excellent Customer Service

Sizes 3" - 48"

Single and Dual Wall  
Fittings to fit all sizes

[ducas@draintile.com](mailto:ducas@draintile.com)

[www.draintile.com](http://www.draintile.com)

Free Delivery  
within 300 miles

Jefferson, WI & Plainfield, IA



Call for competitive pricing: 920-674-3332

# PLOWING AHEAD

## in Farm Drainage

### BRON Self Propelled Drainage Plow

BRON's line of Self Propelled Drainage Plows has set the standard in Farm Drainage. BRON manufactures 750 Double Link Plows, 750 RC Link Plows and 750 Cantilever Plows. Engineered from the ground up, the BRON Drainage Plow gives you better control, higher productivity and extreme comfort while offering more features than any other drainage plow on the market.

- Balanced Weight Distribution
- Ergonomic Cab Comfort
- FOPS/ROPS Certified
- Telescopic Tracks
- Enhanced Operators Visibility
- Tri-Core Cooling System



750 Cantilever Plow



750 Double Link Plow



750 RC Link Plow



**POWER TO PERFORM**

[rwfbron.com](http://rwfbron.com)  
1.800.263.1060

EECI3558-S04-01

 **Springfield Plastics, inc.**



At Springfield Plastics, we use only 100% virgin resin, which means you get a consistently strong pipe at every single inch. We are your supplier for quality drainage products and offer a complete line of the heaviest fittings on the market. When it's your drainage work on the line, can you afford less than 100% virgin resin?

**ILICA SUPPORTER  
FOR 36 YEARS!**

THE ONLY U.S.  
MANUFACTURER  
CERTIFIED AS USING  
ONLY 100% VIRGIN  
MATERIAL  
SINCE 2000

7300 W. State Route 104, Auburn, IL  
800-252-3361 • [www.spipipe.com](http://www.spipipe.com)

  
E q u i p m e n t

<b>Goodfield, IL</b> 309-965-2502	<b>Springfield, IL</b> 217-528-4347	<b>Tolono, IL</b> 217-485-6755
<b>Rock Island, IL</b> 309-787-6108	<b>Peru, IL</b> 815-224-4711	<b>Cedar Rapids, IA</b> 319-365-0515
<b>Dubuque, IA</b> 563-588-1950	<b>Ashland, MO</b> 573-657-2154	<b>Palmyra, MO</b> 573-769-2274

**TRI-STATE**  
CONSTRUCTION EQUIPMENT CO.



**"LIFE'S SHORT—DIG FAST!"**

**BUCKEYE 7200 MAGNUM**



- STATE-OF-THE ART DESIGN
- HIGHER PRODUCTION
- BETTER BUILT

**MIDWEST AUGER-AERATOR**

AUGER BACKFILLERS / WHEEL TRENCHERS  
AUTHORIZED DEALER - BUCKEYE / SPEICHER

PH: 1-800-232-7008     [DIGFASTERNOW.COM](http://DIGFASTERNOW.COM)



**You protect our  
environment, but  
who's protecting you?**



United Fire Group's state LICA insurance program is designed for dirt-moving contractors and includes:

- coverages tailored to your business needs,
- safety group dividends,
- preferred pricing, and
- professional loss control services.

**Let United Fire Group protect you and your business.**



Administered by:



For more information, please contact your local United Fire Group agent, PRINS Insurance, Inc. at 800-831-8545; or email Bruce Mosier at [bmosier@prinsins.com](mailto:bmosier@prinsins.com).