
ILICA



NEWS

Land Improvement Contractors Of America · Illinois Chapter

July - August 2013

David Kennedy
Chairman of the Board

David Haag
President

Tom Beyers
Vice President

Dave Hurst
First Vice President

Janet Burtle-Doubet
Secretary

Bill Dean
Treasurer

Directors

Brian Brooks
Wayne Litwiller

Steve Anderson
Stuart Anderson

Forrest Davis
Mike Yordy

Lee Bunting
John McCoy

Brent Breedlove
Joe Streitmatter

Scott Day
J.D. Laster

John Barttelbort
Doug Nicholson

Norm Kocher
Paul Halter

Janet Burtle-Doubet
Executive Director

ILICA TILING DEMONSTRATION DURING 2013 FARM PROGRESS SHOW



Also Featured Inside:

Drainage Workshop Agenda & Registration *(page 6 - 7)*

The Extension Connection *(page 10 - 11)*

Area 3 Golf Outing Registration & Sponsor Form *(page 14)*

Upcoming Events:

Drainage Workshop - Aug. 6-8,
Richland College, Decatur, IL

Area 3 Golf Outing - Sept. 13th -
Pine Lakes Golf Course - Morton

Return To: Illinois LICA
P.O. Box 474
Brimfield, IL 61517

CONEX-CONAGG 2014: SIGN UP BY 9/1/2013 TO GET LOW HOTEL RATES

The 2014 winter LICA conference will be held in Las Vegas in conjunction with Con-Ex, and although it may seem awfully early to think about March 2014, there is a limited time available before guest rooms at the Riviera Hotel will increase in cost. The LICA convention will be held on Sunday and Monday prior to Con-Ex, March 2nd & 3rd, at the Riviera and right now, their guest rooms list at \$99 per night during the conference and show.

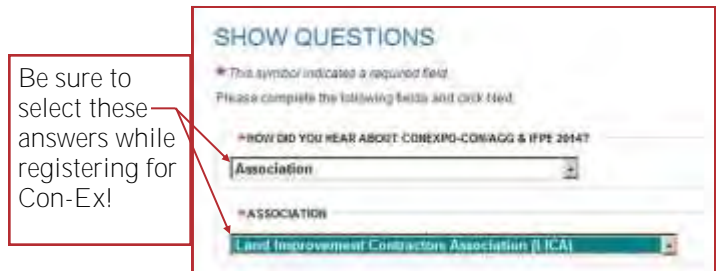
It's easy to do; just go to the website listed below and have your credit card ready. Enter your information and go through the fields, ending up at payment processing. Once you complete that part, it will send a confirmation email and THEN, you can log back in to get a hotel room.

Return to the Con-Ex web page and click on "Register Now"; Select "register online" on that screen which opens up a



new window where you will select "Register & reserve hotel"; this will open the page where you'll log in with the information you supplied when signing up for Con-Ex to "edit" your registration/reservation. A list of hotels will appear, along with their rates. Remember, the LICA convention is at the Riviera, if you want the convenience of staying at the conference hotel.

Just be sure to register by September 1, 2013.



You can register online at <http://www.conexpoconagg.com/Attendees/Registration/RegisterNow/>

PIPE:	ACCESSORIES:	EQUIPMENT:
• MAXI COILS	• RISERS	• TRENCHER PARTS
• DUAL WALL	• FABRIC	• CHAINS, ROLLERS, CUTTERS, TEETH, SPROCKETS, CONVEYOR BELTS AND MORE
• SINGLE WALL	• SHOVELS	• TILE CARTS
• FITTINGS	• PROBES	• MAXI SPOOLS
• PVC	• TILE CUTTERS	
• CORRUGATED METAL	• WATER CONTROL STRUCTURES	

LET US HELP YOU SAVE TIME BY USING OUR DELIVERY SERVICE!
* I/LICA SUPPORTER *

The ILICA News



Editor / Advertising Manager
Janet Burtle-Doubet

Chairman of the Board
David Kennedy, Colfax

President
David Haag, Kempton

Vice President
Tom Beyers, Odin

1st Vice President
Dave Hurst, Yates City

Secretary
Janet Doubet, Williamsfield

Treasurer
Bill Dean, Mattoon

Educational Advisor
Professor Richard Cooke
University of Illinois

The *ILICA News* is the official publication of Illinois Land Improvement Contractors Association, Inc. at 118 E. Knoxville St., Brimfield, IL 61517. (309) 446-3700.

Subscription price is \$25.00 per year, issued bi-monthly: Jan.-Feb.; Mar.-Apr.; May-June; July-Aug. Sept.-Oct.; Nov.-Dec., and includes one annual directory.

FEATURES

- ConEx-ConAGG 2014: Sign up by 9/1/13 for Low Hotel Rates. 2
- Contractor Classifieds 5
- Drainage Workshop Agenda 6
- Drainage Workshop Registration 7
- Tile Installation During 2013 Farm Progress Show Moving Ahead. 9
- Area 6 Golf Outing, ILICA Summer Picnic A Big Hit 12
- 5th Annual Area 3 Golf Outing Moving to Pine Lakes 13
- Area 3 Golf Outing Registration and Sponsor Form 14
- June Membership Drive Pushes ILICA Numbers Higher 21
- Summer LICA Convention in Cleveland 22

COLUMNS

- Board Meeting Notice 3
- Presidents Message 4
- New Members 4
- ILICA Ladies Page: Back To School: Top 10 Ways to Save. 8
- The Extension Connection 10-11
- 2013 Committee Members. 16
- Member Application 17
- Featured LICA Benefit: Service Supply. 18
- Advertisers Index 19
- Calendar of Events 19
- Safety Feature: Types of Heat Stress 20

The LICA Creed



Land, the foundation of the Nation
 The basis of all wealth
 The heritage of the wise
 The thrifty and prudent
The poor man's joy and comfort
 The producer of food, fiber and fuel
 The basis of factories
 The foundation of banks

All that man builds is from the land. We often take it for granted or even abuse it; And yet many, unthinkingly and unknowingly pass the land by. What man does with the land will be the deciding factor of his survival.



Meeting Notice

Regular Board Meeting Notice

Regular Board Meeting
September 7, 2013 - 2 pm

Jubilee Café - 7203 N. Kickapoo-Edwards Rd

Kickapoo, Illinois

Committee Meetings - 10 am - 1 pm

(See page 19 for additional details)

PRESIDENT'S MESSAGE



Greetings from Kempton!!

It was nice to see so many of our Illinois LICA members at the National LICA Summer Meeting in Cleveland. They had nice tours and activities planned for attendees with great participation. At the Friday meeting roughly 25% of the attendance was Illinois delegation. This made me proud of our members. Associates had the opportunity to display their merchandise and services at the opening reception on Thursday with business meetings Friday and Saturday morning. To top it off there was a wonderful fireworks display following the Indians-Royals game Friday night. The Rock and Roll Hall of Fame tour gave everyone a chance to recall their rock and roll past.

It's been a challenging spring all around Illinois. First, it seems like everyone experienced the extended cool weather and rain, and now it's hot and dry without a drop of rain to be had. At least the corn seems happy right now.

I hope all members have signed up for the 3-day drainage workshop at Richland Community College on August 6, 7 and 8. The format is slightly different from year's past so take a good look at the agenda and registration form, which is in this newsletter to see if you might benefit from this training.

Later in the month, we'll move on to the Farm Progress Show which is back in Decatur this summer. ILICA is looking for volunteers for the tiling installation project and in the booth in the Conservation tent. If you can help at either of these, please let Janet or David Kennedy, show committee chair, know how you'd like to participate. We need your help all 3 days and of course, with set-up and tear down. There are some rooms available for lodging but you need to let Janet know asap on this if you are planning to stay. Show dates are August 27-28-29.

There are many things to put on the calendar. All members can benefit from the sessions, educational workshops and demonstrations to please plan to attend. We need to keep our members informed and learning new techniques.

Don't put your golf bags away yet. We have another outing scheduled for Sept. 13, 2013 at Morton. There's still plenty time to practice and get your foursomes together. That registration form is also in this newsletter and on the website also.

Work Safely,
David Haag, President



NEW MEMBERS

Active Contractors

James M. Burke
J.M. Burke, Inc.
7974 Wildwood Acres Road
Springfield, IL 62707
Ph: 217-487-7719

William Smith
Wild Land Brush Service
29265 Co. Highway 1
Erie, IL 61250
Ph: 309-314-6984

David Baumann
Yorktown Excavating
29366 E. 2400th St.
Prophetstown, IL 61277
Ph: 815-590-6180

Wayne Bollin
Bollin Tiling & Exc.
2260 County Rd 800 E
Nauvoo, IL 62354
Ph: 217-453-2448

Rich Fox
Fox Drainage
14690 N. 2800 E. Road
Saunemin, IL 61769
Ph: 815-674-8141

Kevin Bos
Bos Farm Repair
27595 E. 1800 St.
Geneseo, IL 61254
Ph: 309-945-1440

Associate Members

INCA
Kathy Zehr
2427 Batestown Road
Danville, IL 61832
Ph: 217-443-1444

Envision Insurance Group
Jeff Peterson
PO Box 1559
Galesburg, 61402
Ph: 309-683-1100

Nalevanko Enterprises
Ronald Nalevanko
4929-107 Ave
Milan, IL 61264
Ph: 309-787-6613

Brown Bear Corp
Stan Brown
PO Box 29
Corning, IA 50841
Ph: 641-322-4220

Thank You!


PRINSCO: YOUR LONG HAUL PLANNING PARTNER

As a leader in the agriculture water management industry for over 35 years, we've seen you through plenty of highs and plenty of lows. Prinsco is in it with you for the long haul. We offer a full line of quality products with the experience and technical expertise that comes from a strong history in the industry. Prinsco is your planning partner.
Call 800.992.1725 today!



WATER MANAGEMENT SOLUTIONS SINCE 1975
800.992.1725 | www.prinsco.com | agblog.prinsco.com

PRINSCO
ENGINEERING WITH INTEGRITY



LEE MILONE
OWNER / MANAGER

Phone (618) 395-8046
Fax (618) 393-4702

1-800-247-7972

4678 Weinmann Dr., Suite A
Olney, IL 62450

"WE TAKE PRIDE IN OUR WORK AND SERVICE WHAT WE SELL"



ENVISION
INSURANCE GROUP

Envision Insurance Group is proud to announce the addition of Tim Neuhauser to our sales staff. Tim will be located in our Peoria office. He can be reached at 309-231-0388 to assist your LICA insurance needs.




United Fire Group's state LICA insurance program is designed for dirt-moving contractors and includes:

- Coverages tailored to your business needs,
- safety group dividends,
- preferred pricing, and
- professional loss control services.

**Do You Know Someone Who Could Benefit From Membership With ILICA?
Call Them Today And Invite Them To One Of Our Many Summer Events!**



Help US Build!

CONTRACTOR CLASSIFIEDS



1980 Speicher 3600 Auger Backfiller
2nd Owner
3300 Hours - Auger needs some work
Contact: **Mike Hoene @**
217-821-4560 / Cell



Schlatter's Inc.
Intelligent Water Management™



Wolfe
Drainage Plows
Trimble GPS
Machine Control
RTK Topo Mapping
Water Management
Design Software
DLog Tile Mapping




www.SchlattersInc.com
(219) 567-9158 **Francesville, IN**



2013 DRAINAGE WORKSHOP AGENDA



AUGUST 6TH, 7TH, & 8TH

**Equipment Overview Panel Discussion • Tile Installation Guidelines
Drainage Classroom • GPS System Overviews (AGPS & Trimble)**

We're returning to Decatur's Richland College for the August drainage workshop again this year. Breakfast and lunch is provided with registration, but dinner is on your own. However, on Wednesday evening JCG Midwest is hosting a cook-out at their facility, which is an easy drive from Richland College, and all workshop attendees are invited to attend.

The first day targets contractors who have recently added tiling to their list of services and for employees who might benefit from a better understanding of the equipment and material used in drainage. Many of our tiling equipment associates have agreed to help with the panel discussion on Tuesday with some providing a brief overview of their own equipment. Tile installation guidelines will also be addressed by some of our tile manufacturers. Please bring your grade pole and laser receivers for the field portion of the workshop. Not everyone needs their own but there should be one for each group during the field session.

The second day will begin with Richard Cooke of University of Illinois Extension facilitating the design classroom ses-

sions with updates on the drainage guide if time allows. **Also note that laptops will be VERY helpful** for the last two days of the workshop. **If you would like a "loaner" computer to use during these sessions, please contact the ILICA office at (309) 446-3700 to make arrangements.** Also, plan to dress accordingly (hat, sunscreen, raingear, etc.) for the field sessions on Tuesday and Wednesday. All sessions qualify for CEU's in the ILICA certification program.

Our 3rd day brings the return of Joey Schlatter and the Trimble GPS software and Nate & Mike Cook with the AGPS software, each providing half day sessions. ILICA certification will be offered during both of these sessions to try and accommodate everyone who wants to take advantage of this testing.

The registration form and contact information for the Sleep Inn is on the following page. **Make your overnight room reservations before July 15th.** If you have questions about this workshop, please call the ILICA office and keep checking our website, www.ilica.net for more detail as the date gets closer.

Tuesday, Aug 6th – Panel Discussion

8 - 8:30 am - Registration and Continental Breakfast

8:30 am - Individual presentations and panel discussion:

- Equipment Maintenance: wear points & components
- Options in wear parts & attachments for various machines.
- Availability of parts for older machines.

Lunch - Noon - 12:45 pm

1 pm - Panel Discussion continued

- Maximizing the operational speed of the tiling machines, chain speed versus ground speed and maximum engine torque

3 pm - Break

3:15 - 5 pm - Tile recommendations & Laser Calibration

- Tile Installation guidelines - *Tile manufacturers*
- Laser calibration & survey points - *Richard Cooke*

Wednesday, Aug 7th – Classroom w/ Richard Cooke

7:30 - 8 am - Registration and Full Breakfast

8 am - 5 pm - Survey & Design Classroom

- Differential Leveling
- Survey terms
- Computation of elevations
- Allowable errors
- Profile leveling

August 7th – Classroom w/ Richard Cooke (*continued*)

- Turning points
- Plotting of profile data
- Drainage system design and layout
- Sizing drainage mains

Noon - 12:45 pm - Lunch

- A discussion about soil types, lateral spacings, and lateral pipe size

- Performance studies on the various drainage products

3 pm - Break

- Common Drainage Design mistakes
- Compare and contrast different drainage designs.
- Surface inlet capacities, surface ditching sizing & capacities
- *If time allows:* Updates on the drainage guide
- Common sense use of the ADMC control boxes

Thursday, August 8th – GPS Software Update

- What is next for GPS, GIS, and Machine Control?
- How can I use it to make me a better contractor?

7:30 - 8 am - Registration and Full Breakfast

8 am - Noon - Trimble - Joey Schlatter

Lunch - Noon - 12:45 pm

1 - 5 pm - AGPS - Mike & Nate Cook



UNIVERSITY OF ILLINOIS
EXTENSION

AUGUST DRAINAGE WORKSHOP REGISTRATION

**Richland Community College - Shilling Center - Salon I
One College Park, Decatur, IL**



**Aug. 6 - 8: Equipment Overview Panel Discussion ▪ Tile Installation Guidelines
Drainage Classroom ▪ GPS System Overviews (AGPS & Trimble)**

Pre-Registration Workshop Fees - ILICA Members		
	1st Attendee	Additional
Full Registration for all Sessions:	\$175	\$150
Session Pricing		
Day 1: Equipment Overview	\$ 65	\$ 50
Day 2: Drainage Design	\$ 70	\$ 60
Machine Control & Mapping	\$ 65	\$ 50

After July 25, 2013 or On-Site Registration		
	1st Attendee	Additional
Registration for all Sessions:	\$200	\$180
Session Pricing		
Day 1: Equipment Overview	\$ 80	\$ 65
Day 2: Drainage Design	\$ 90	\$ 80
Machine Control & Mapping	\$ 80	\$ 65
Optional Certification Review & Testing on Aug. 8th (2 year certification period)		
	\$100—Initial Certification Per Applicant	
	\$50—Bi-Annual Renewal Per Applicant	

Pre-Registration Workshop Fees - Non-ILICA Members		
	1st Attendee	Additional
Full Registration for all Sessions:	\$250	\$225
Session Pricing		
Day 1: Equipment Overview	\$ 90	\$ 75
Day 2: Drainage Design	\$100	\$ 85
Machine Control & Mapping	\$ 90	\$ 75

After July 25, 2013 or On-Site Registration		
	1st Attendee	Additional
Registration for all Sessions:	\$300	\$260
Session Pricing		
Day 1: Equipment Overview	\$100	\$ 85
Day 2: Drainage Design	\$110	\$ 95
Machine Control & Mapping	\$100	\$ 85
Optional Certification Review & Testing on Aug. 8th (2 year certification period)		
	\$500—Initial Certification Per Applicant	
	\$200—Bi-Annual Renewal Per Applicant	

Yes, I will attend the following August Drainage Workshop Session(s)

- Equipment Overview & Tile Installation Guidelines** (day 1)
 Drainage Design (day 2)
 Machine Control & Mapping (day 3)
 Optional ILICA Certification (day 3; morning & afternoon)

Name: _____ Area #: _____

Address: _____ City, State, Zip _____

Company Name: _____ Phone # _____

Additional Attendees _____

Pre-Registration fees must be received in our office by deadlines stated above.

Mail to: ILICA - P.O. Box 474 - Brimfield, IL 61517 or Fax: (309) 446-3744 Total Enclosed: \$ _____

Sleep Inn
3920 E. Hospitality Lane
Decatur, IL - \$79
Ph: 217-872-7700

Please contact the hotel and mention **Illinois LICA** as your group **no later than July 15th** to receive the group rate of **\$79 + tax**. After July 15th, the Sleep Inn may not have availability due to Farm Progress Show set up.



ILICA Ladies Page

Back-To-School Shopping: Top 10 Ways To

Shop for Sales and Special Offers

Save money on back-to-school supplies by looking for bargains and sales. Try shopping at multiple stores to catch different sale specials. One store may have products "on special" that other stores don't. You may also be able to get a price match by presenting a competitive store's advertisement. Also, make sure you maximize your savings by taking advantage of special tax free holidays. Don't forget to use all those coupons clippings for an even bigger discount at the checkout.

Shop at Bargain and Dollar Stores

Your local dollar or discount store is a great place to save money on back-to-school supplies. Name-brand versions of supplies like pencils, rulers, highlighters, scissors, erasers, folders, and notebooks may be discounted to around \$1 at dollar stores. You may not find everything you need, but it's worth a shot to see what they have in stock.

Check Out Yard Sales and Thrift Stores

If you like to bargain, then yard sales and thrift stores are your one-stop deal spots. Binders, notebooks, backpacks, lunch boxes, and other school accessories can be purchased at unheard-of prices. Many times yard sales have unused items, but if your finds have some wear and tear, a little creativity and family craft-time can bring them back to life. You can also find quality vintage accents for a dorm room, if your teen is heading off to college. Couches, nightstands, lamps, desks, and other furniture and accessories are heavily discounted -- and you may be able to negotiate an even cheaper deal. After all, one man's trash is another man's treasure!

Recycle Last Year's Supplies

Give the Earth and your pocketbook a rest this school year by recycling old folders, binders, notebooks, and other supplies. Tear out and recycle used pages from old notebooks, and use the remaining fresh pages this year. Give last year's supplies a new look with contact paper, stickers, wrapping paper, photographs, or magazine cutouts. Make sure you keep supplies like calculators, rulers, protractors, and sharpeners, because they can be used for several years.



Use Loose-Leaf Paper

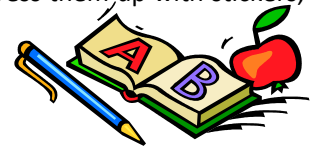
A common mistake spiral notebooks -- when the school year ends is thrown away blank pages and all. Instead, use binders with loose-leaf paper. That way you use only the paper you need and can save the rest for next year. If spiral note-

books are necessary, purchase notebooks with perforated pages that rip out cleanly, so blank pages can be reused as loose-leaf.



Get Creative

Most schools suggest that books be covered with a protective layer to keep them newer longer. Instead of spending money on covers, get creative with what you have at home. Extra wallpaper, old wrapping paper, newspaper, and brown-paper bags make great book covers at little or no cost. A plain cover also provides a blank canvas for kids to express themselves creatively. Forgo expensive, novelty pencil and lunch boxes, supply boxes, and binders, for plain, less expensive versions. Then let your kids dress them up with stickers, decals, and paints.



Stock Up for Next Year

Every school season follows the same routine: School supplies are bought, kids go back to school, and then the stores put everything on sale. Retail stores tend to discount school supplies even more after the "buying season" is over. By thinking ahead and taking advantage of markdowns this year, you're sure to save money for next year.

Buy a Reusable Lunch Box

Instead of packing your child's lunch in a new brown bag every day, pack it in a fun, reusable lunch bag that reflects her personality. Reusable lunch boxes don't just cut down on the money you spend on brown bags; they also help the Earth. Lunch options don't have to be limited to room-temperature foods anymore, since many lunch bags are insulated or come with a small ice pack to keep things cooler longer. Your child's lunch just got that much better!

Shop Online

Save money on school supplies and back-to-school clothes by shopping online. Office supply companies may offer better prices online than in their stores. Be sure to look for inexpensive delivery options, to keep the overall price down. This way, you save time, gas, and money.

Have Kids Chip In

It's amazing how much your child does not need when it comes to spending his own money. By having kids chip in on their school supplies and school clothes, you can save money while teaching your child a lesson in money management. Kids may even feel a sense of accomplishment, knowing that they contributed their own money.



TILE INSTALLATION DURING 2013 FARM PROGRESS SHOW MOVING AHEAD



Coordinating a project during an event that is as world renowned and well attended as the Illinois Farm Progress Show (FPS) is not as easy as one might hope. Illinois LICA has been planning a tile installation project on a 40 acre field used for one of the harvest demonstrations during the FPS, but the contract and design has just now determined, so things are officially moving forward.

The details known at this time is that ILICA will install the laterals and one control structure on the property located on the corner of Brush College and Mound Roads, adjacent to Progress City USA, for the Richland Community College Foundation (RCCF). RCCF has requested that this installation be done by Certified ILICA drainage contractors using high production plows, insuring the best job possible. After all, this is farm ground that is expected to produce good yields every year, not just when the FPS is in town. RCCF also requested that conservation drainage be utilized in the installation, being an educational institution with a agricultural focus.

As installation details are finalized, members of the show committee and the ILICA office will be contacting our associate members to request their support on this project as well as lining up volunteers needed for the hook-ups and crowd control aspect of the show. ILICA is responsible for the safety aspect of this project, and although ILICA certified contractors will be installing the tile, many volunteers will be needed for crowd control and other support. Anyone interested in helping out, please contact Show Committee chair, David Kennedy and let him know what days you're available. Contractors who have already contacted the ILICA office about helping out will also hear from the committee or office as plans firm up. A room block has been secured in Springfield, which was as close to Decatur as we could find that time of year. These rooms will



be reserved for our volunteers however, any remaining rooms will be available for ILICA members who just want to attend and see what all the fuss is about.

There will also be a tent

staffed by ADMC members at the control structure installation site to provide information to visitors on their research regarding DWM and other practices designed to lower nutrient loss. This area will also require crowd control to keep visitors safely back from the excavation. Farm Progress Companies have agreed to use their trams to bring interested visitors out to the tile installation area, which requires a set schedule of when tile lines will be run. There will be morning and afternoon installations on the first 2 days with just a morning run on the last day. The trams will also transport



visitors out to the structure and educational tent area, as their schedule allows.

Contact David Kennedy or the ILICA office for more information. ILICA certification is being offered at the August drainage workshop (see pg. 6 - 7) but please let Janet know as soon as possible of your interest. A document explaining the requirements of certification will be provided so you can be prepared by that time. And remember, volunteers for many other aspects of the show are needed so please let David know if you'd like to help!

You protect our environment, but who's protecting you?



United Fire Group's state LICA insurance program is designed for dirt-moving contractors and includes:

- coverages tailored to your business needs,
- safety group dividends,
- preferred pricing, and
- professional loss control services.

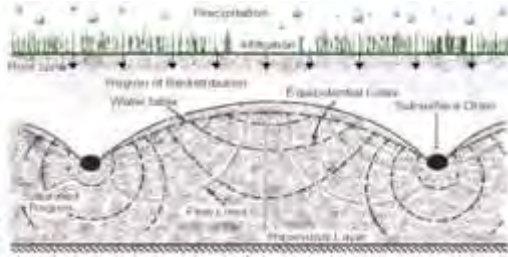
Let United Fire Group protect you and your business.



Administered by:



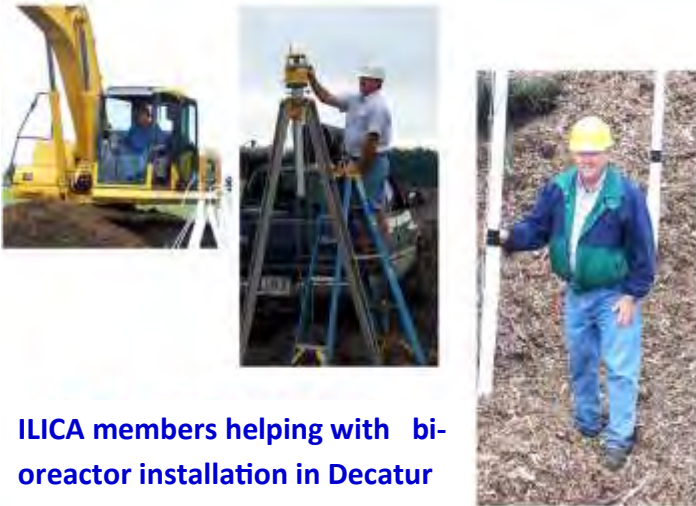
For more information, please contact your local United Fire Group agent; PRINS Insurance, Inc. at 800-831-8545; or email Bruce Mosier at bmosier@prinsins.com.



The Extension Connection

Source: University of Illinois Extension

DESIGNING AND CONSTRUCTING

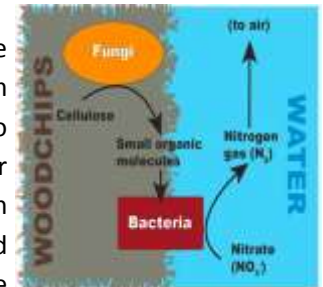


ILICA members helping with bioreactor installation in Decatur

Nitrogen, along with phosphorus, are the main nutrients contributing to hypoxia in the Gulf of Mexico. Nitrogen, in the form of nitrate is very soluble, and is primarily transported in water. Systems that are designed to quickly remove water from cultivated fields, will also remove nitrate dissolved in the soil water.

Bioreactors have been developed to help remove nitrates leached into tile drains. Each bioreactor consists of a buried trench with woodchips through which the tile water flows before entering a surface water body.

Organisms from the soil colonize the woodchips. Some of them break down the woodchips into smaller organic particles. Other microorganisms “eat” the carbon produced by the woodchips, and “breathe” the nitrate from the



water. Just as humans breathe in oxygen and breathe out carbon dioxide, these microorganisms breathe in nitrate and breathe out nitrogen gas, which exits the bioreactor into the atmosphere. Through this mechanism, nitrate is removed from the tile water before it can enter surface waters. More information on the history and operation of bioreactors may be found in the Extension Bioreactor Module. <http://web.extension.illinois.edu/bioreactors>

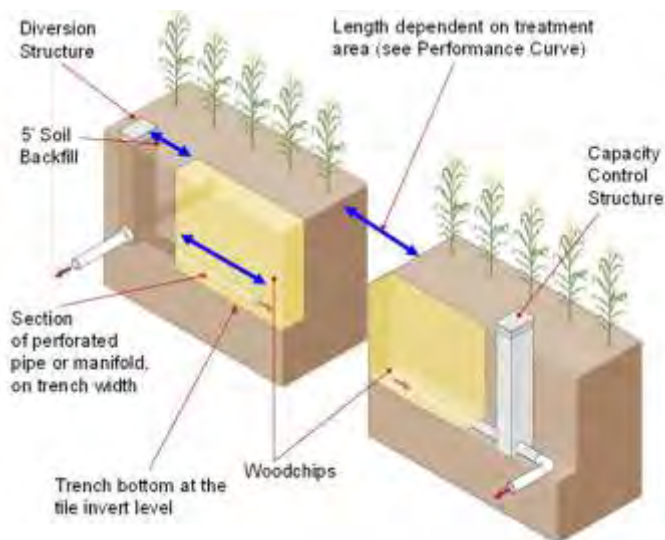
According to 1985 estimates there are close to 80 million acres in the Midwest (Iowa, Illinois, Indiana, Ohio, Michigan, Minnesota, Missouri, and Wisconsin) that have some degree of subsurface drainage. Much of this area is suitable for the installation of bioreactors.

BIOREACTOR INSTALLATION PROCEDURE

An online tool for estimating contributing area is located in the Illinois Drainage Guide. <http://www.wg.illinois.edu/dg/Equations/Bioreactor.exe> The basic steps are outlined below.

1. Determine the area contributing flow to the tile outlet (CA).

Contractors will know the contributing area for new tile systems that they design. This area can also be determined from the tile map of an existing system, or can be estimated

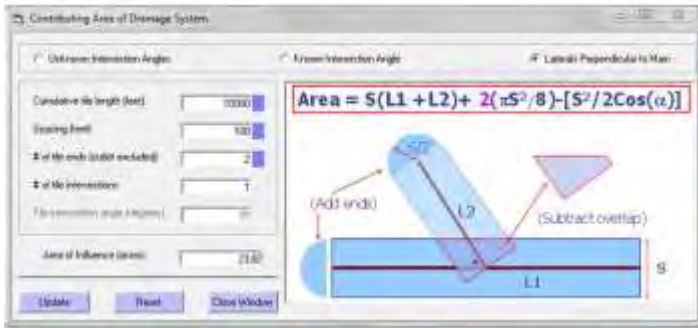


Bioreactor schematic

In the next issue of the *ILICA News*, this column will contain an article on determining the tile choke point in a drainage system.

DESIGNING AND CONSTRUCTING

CONT.

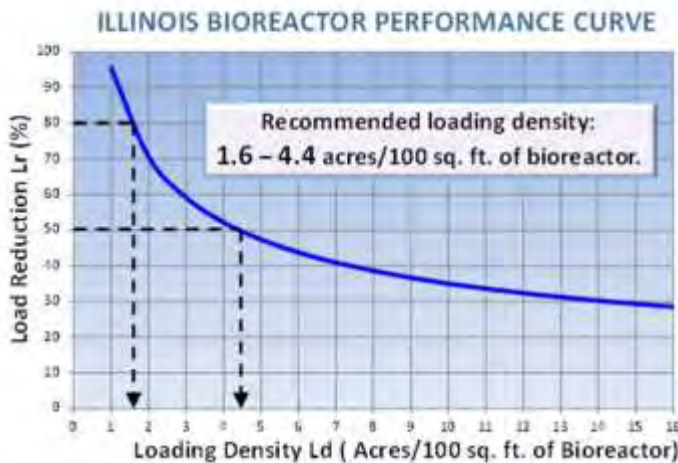


Interface to determine drainage area based on tile system layout

from the product of the cumulated length of the laterals and the tile spacing.

2. Determine the bioreactor loading density (L_d) based on relevant NRCS Practice Standards

Systems should be designed to remove 50% to 80% of the



influent nitrate load. Based on the Performance Curve for Illinois, this corresponds to 4.4 to 1.6 acres treated by 100 square feet of bioreactor.

3. Specify bioreactor dimensions based on loading density (L_d) and contributing area.

The bioreactor surface area (sq. ft.) = $100CA/L_d$. Select a width that allows the bioreactor to fit into the selected location, and divide the surface area by this width to get the bioreactor length. Widths of 5 to 20 feet are recommended for efficient construction and the elimination of stagnant areas within the system.

4. Excavate the trench with a flat bottom and install a plastic liner. The bottom of the trench should be at the same elevation as the bottom of the tile. The liner reduces seepage into, or out of, the system.

5. Install the structure(s) and the inlet and outlet manifolds. The manifolds should extend along the entire



Manifold across width in lined bioreactor

width of the trench on the inside of the liner. They should be separated from the structure by a minimum of 5 feet of non-perforated tile.

6. Fill the trench with woodchips to within 12 to 18 inches of the ground surface, cover with plastic or geotextile material, and backfill with soil. Mound the soil 12 to 18 inches above ground level since there will be some subsidence. If the system is located in an un-cropped area such as a filter strip, the trench may be filled with woodchips to the ground surface and left uncovered.

BIOREACTOR OPERATION

The capacity control stop logs should be set 3 inches to 12

Recommended settings for diversion stop logs.

Date	Stop log setting in diversion structure
November 1	6 inches below ground surface
2 weeks before planting (March 16 - April 16)	12 to 24 inches above tile invert
2 weeks after the end of spring agro-technical practices (May 16 - June 1)	24 to 36 inches above tile invert*

* Diversion stop logs should be lowered during extremely wet periods to prevent the water table from rising into the crop root zone.

inches below the diversion stop logs. The boards in the diversion structure should be set close to the tile invert from two weeks before planting until the end of spring cultivation and planting practices.

AREA 6 GOLF OUTING, ILICA SUMMER PICNIC & MEMBER MEETING IS A BIG HIT!



The 2nd annual Area 6 golf outing was a huge success with an increase in attendance and sponsorship. This year brought 3 outing sponsors, JCG Midwest, Birkey's and Springfield Plastics Inc along with several new hole sponsors. An additional 16 golfers attended and it was a great day for golf, food and refreshments.

Our thanks to everyone who supported the outing. This fundraiser helps ILICA keep growing in membership and activities, and it's fun to boot! Several people had to drive through pouring rain to get to the course for dinner Friday evening but it stayed sunny and nice in Mattoon for the entire day. Port Industries sponsored the lunch and the driving range with H & S Company sponsoring dinner. The food was great, we had lots of help distributing drinks on the course and everyone seemed to enjoy the day.

Saturday morning, Birkey's had several pieces of Case equipment, including a grader, skid loader, backhoe, and two excavators set up behind Bill Dean's shop for a hands on demonstration. Everyone enjoyed operating the various

pieces throughout the morning and even though it was slightly overcast, the rain held off until the member meeting began that afternoon. Custom Smokehouse of Mattoon, one of our hole sponsors, provided a delicious breakfast and lunch for our guests at the Dean Drainage shop so the weekend was a success any way you look at it.

Our heartfelt thanks go out to the Deans for their hard work in preparing for this 2 day event, to our Area 6 golf outing sponsors, JCG Midwest, Springfield Plastics and Birkey's and for Birkey's generosity in providing the equipment for the hands on demonstration on Saturday morning. None of this happens without a lot of hard work and preparation ahead of time, so if you have a chance to thank any of these fine folks, please let them know that YOU appreciate their efforts as well! Thanks too, to everyone who attended or supported these events in any way!

Available in 8' or 10' width options

For Mounting on skid loaders with 3000-5500psi and 30-50GPM

NEW!!

**Model R31
Backfiller**

Adjustable Wear Plates
Side to Side Tilt Standard
Universal quick attach standard

Online video at: http://www.youtube.com/watch?v=MYsy5WB_9tE

sales@brownbearcorp.com

www.brownbearcorp.com



5TH ANNUAL AREA 3 GOLF OUTING MOVING TO PINE LAKES GOLF COURSE NEAR MORTON



The Area 3 Annual Golf Outing has moved to Pine Lakes Golf Course near Morton. The address shows up as Washington, but it's basically in between the two towns. No matter where Mapquest says it's located, it's a beautiful course and clubhouse located in a rural setting.

But even though the venue has changed and it's on a Friday this year, the day will go much like past year's outings. A quick lunch is available for our guests upon arrival until close to the 1 pm shotgun start where everyone heads out to their appointed starting hole. After that, it's a matter of speed and dexterity as to when you get done on the course to end the day with a steak dinner at the clubhouse.

Our generous outing sponsors have returned for this 5th annual Area 3 outing and we hope our hole sponsors will

also support this fundraiser as well. A very early harvest and rainy weather may have impacted last year's attendance, but the support was phenomenal. And although great weather can't be guaranteed, it seems an early harvest is not in the cards for anyone in Illinois or even the Midwest this year.



So, there's no excuse NOT to be there this year, right? Those who have sponsored past outings will receive an invoice reflecting last year's participation and the registration form will be mailed to all members in early August. You can also find it on the next page of this newsletter or on our website, www.illica.net. Please consider joining us for this great day and have fun supporting ILICA!



AREA 6 GOLF OUTING & PICNIC PHOTOS





Outing Sponsors

CK III POWER

Courson & Associates
Certified Public Accountants

Port Industries, Inc.

Springfield Plastics, inc.

**Illinois Land Improvement Contractors Association
5th Annual Area 3 Golf Outing - Friday, September 13, 2013**

Pine Lakes Golf Club - Shotgun Start 1:00 pm
25130 Schuck Road, Washington, IL 61571

Golf & Dinner.....\$ 90.00

(Includes Green Fees, Golf Cart, Pulled Pork lunch, Driving range,
2 Beverage tickets, Buffet Dinner & Prizes)

Golf Only..... \$ 70.00 • Dinner Only..... \$ 45.00

Registration Form

Please RSVP By September 3rd

Enclosed is the check PAYABLE TO ILICA

In the amount of \$ _____ for the following:

1. _____
2. _____
3. _____
4. _____

Golf & Dinner
@ \$90

Golf Only
@ \$70

Dinner Only
@ \$45

<input type="checkbox"/>	<input type="checkbox"/>	<input type="checkbox"/>
<input type="checkbox"/>	<input type="checkbox"/>	<input type="checkbox"/>
<input type="checkbox"/>	<input type="checkbox"/>	<input type="checkbox"/>
<input type="checkbox"/>	<input type="checkbox"/>	<input type="checkbox"/>

My preferred foursome is: _____ I do not have a preference

Name: _____ Phone: _____

Green & Tee Sponsors

Company Name (To be listed on sign) _____

Contact Person: _____ Phone: _____ Email: _____

- Yes, we would like to Sponsor a Green or Tee - **\$150**
- Please provide our sign (\$35 per sign)
- We will provide our own sign (16" x 24")
- Use sign from last year's golf outing

Enclosed is the check **PAYABLE TO ILICA**, in the amount of
\$ _____ for registration and sponsorship.

Meal & Outing Sponsors

- I would like to be a lunch sponsor \$250.00 *
- I would like to be a Dinner Sponsor \$350.00 *
- I would like to be an Outing Sponsor \$500.00 **
- I would like to be an Outing Sponsor & sign up a foursome \$770 *** (includes 1 free golf & dinner registration)

Mail check and this form to:

Illinois LICA - P.O. Box 474 - Brimfield, IL 61517 (Credit Cards also accepted. Call the ILICA office @ 309.446.3700 for details)

* Lunch and Dinner sponsors will have signage in place at registration table and dining area and receive recognition in the annual ILICA Directory.

** Outing sponsors will have signage (including company logo) in place at registration table, in dining area and at cart pick up location and will receive recognition in the annual ILICA Directory and at the annual Convention and Member meeting.

*** Outing sponsors that also purchase a foursome receive special pricing on golf & dinner registration; **buy 3 get one free!**



Since 1923 supplying quality drainage products with service second to no one...

Why Fratco Pipe and Fittings?

Quality and Service. We are 100% committed to offering the best HDPE corrugated pipe and fittings to the market, with a friendly and knowledgeable staff that is dedicated to providing unparalleled flexibility and delivery, ensuring prompt and accurate order filling from our fully stocked yards.



Experience the Fratco Difference....

Members of:



ST. ANNE OFFICE
499 SOUTH OAK ST.
ST. ANNE, IL 60964
(815) 427-8144
(800) 475-8144

www.fratco.com



MT. PLEASANT OFFICE
1600 W. WASHINGTON ST.
MT. PLEASANT, IA 52641
(319) 385-1213



FRANCESVILLE OFFICE
4385 SOUTH 1450 WEST
FRANCESVILLE, IN 47946
(219) 567-9133
(800) 854-7120

Members of:



Agri Drain CORPORATION

America's most complete manufacturer and supplier of products for drainage water management, wetlands, ponds, lakes, erosion control, and land improvement.

Call for your FREE catalog today! 1-800-232-4742

info@agridrain.com • www.agridrain.com

Great Lakes Inter Drain

2951 East State Street • Fremont, OH 43420

Your U.S. Distributor for:

Inter-Drain Trenchers and Plows
New and Used Equipment

Advanced Geo-Positioning Solutions (GPS)
for Survey and Total Machine Control

AFT Add on Trenchers • Laser Systems
Weichmann Chain, Cutters etc.

"We have the field experience you can depend on after the sale."

AGPS For more information call: **AFT**

(800) 767-1904 or (419) 332-1904
Fax: (419) 332-2344

Visit us on the web at: www.greatlakesinter-drain.com
or email: sales@greatlakesinter-drain.com

2013 Committees

Associate

Corey Getz - ADS / Hancor, Chair
 Mark Baker - Springfield Plastics
 Mike Bierbaum - CPI Supply
 Dave Mosier - ADS / Hancor
 Chad Nicholson - Fratco, Inc.
 John Pogge - Prinsco, Inc.

Auditing

Bill Dean, Chair
 Steve Anderson
 Ron Masching

Awards

Bill & Bev Dean, Chair
 Brent & Tracy Breedlove
 Bill & Janet Doubet

Budget

Tom Beyers, Chair
 Dan Day
 Bill Dean
 Dave Haag
 Dave Hurst

By-Laws

Stuart Anderson, Chair
 Bill Doubet
 Dave Hurst
 Stan SeEVERS
 Joe Streitmatter

Certification

Dave Hurst, Chair
 Wayne Litwiller
 Ron Masching
 Prof. Kent Mitchell, retired U of I
 Stan SeEVERS

Certification Board

Dave Hurst, Chair
 Forrest Davis
 Dave Kennedy
 Wayne Litwiller
 Ron Masching

Convention

Brent & Tracy Breedlove, Chair
 Bill Dean
 Greg & Jennifer Furkin
 Corey & Whitney Getz
 Kristin Kutemeier
 Mike & Holly Yordy

Devotions

Jean Davis, Chair
 Steve Anderson
 Norm & Coretha Rozendaal

Education

Brent Breedlove, Chair
 Brad Baker
 Tom Beyers
 Richard Cooke: Univ. of Illinois
 Corey Getz
 Kristin Kutemeier
 Eric Layden
 Mike Yordy

Executive Committee

David Haag, Chair
 Steve Anderson
 Tom Beyers
 Janet Burtle-Doubet
 Bill Dean
 David Kennedy

Golf Outing

Wayne Litwiller/Bill Dean - Co-Chairs
 Jerry Biuso
 Brian Brooks
 Norm Kocher

Headquarters

Dan Day, Chair
 Steve Anderson
 Mark Baker
 David Haag
 Ron Masching

Industrial & Business Relations

Bill Doubet, Chair
 Dan Day
 Bill Dean
 Wayne Litwiller
 Mike Yordy

Insurance

Dan Day, Chair
 Charlie Adams
 Lori Kennedy
 John McCoy
 Jackie Streitmatter

Ladies

Marsha Haag, Chair
 Judy Beyers
 Bev Dean
 Cathy Masching
 Jackie Streitmatter

Legislative

Steve Anderson, Chair
 Tom Beyers
 Lee Bunting
 Bill Doubet
 Dave Hurst
 Norm Kocher
 Joe Streitmatter
 Mike Yordy

Long Term Planning

Steve Anderson, Chair
 Stuart Anderson
 Dan Day
 Bill Doubet
 Ron Masching



Membership

Wayne Litwiller, Co-Chair
 Norm Kocher, Co-Chair
 Steve Anderson
 Mark Baker
 Tom Beyers
 Brent Breedlove
 Brian Brooks
 Forrest Davis
 Dan Day
 Scott Day
 Bill Dean
 Bill Doubet
 Eugene Glueck
 Ron Masching
 Larry Rhodenbaugh

Nomination

Joe Streitmatter, Chair
 Brian Brooks
 Dan Day
 Dave Hurst

On-Site Waste

Wayne Litwiller, Chair
 John McCoy
 Larry Rhodenbaugh
 Jason Winings

Picnic

Steve Anderson / Bill Dean

Publicity

Bill Doubet, Chair
 Mark Baker
 Wayne Litwiller

Safety

Doug Nicholson, Chair
 Brent Breedlove
 Dave Hurst
 Dave Kennedy
 Carol Kiley
 John McCoy
 Jason Winings

Show & Other Income

Brent Breedlove, Co-Chair
 Dave Kennedy, Co-Chair
 Brian Brooks
 Joe Krupps
 Wayne Litwiller
 John McCoy
 Joe Streitmatter





MEMBERSHIP APPLICATION

Illinois Land Improvement Contractors Association, Inc.

118 E. Knoxville · PO Box 474 · Brimfield, IL 61517
 (309) 446-3700 · Fax: (309) 446-3744 · Email: janet@illica.net

Company Name: _____

Member Name: _____ Spouse's Name _____

Street Address: _____

City: _____ State: _____ Zip: _____ County: _____

Phone: (_____) _____ Cell Phone: (_____) _____

Fax: (_____) _____ Email: _____

Website (if applicable): _____ LICA Sponsor: _____

Check All Services Provided

- | | |
|---|---|
| <ul style="list-style-type: none"> • CUI - Cable/Utility Inst. • DB - Directional Boring • DI - Drainage/Irrigation • DWM - Drainage Water Mgmt • EC - Erosion Control • EMC - Earthmoving/Land Clearing • EXG - Excavating/Grading • GR - Gravel/ Rock Production • LL - Land Leveling • LS - Landscaping • ODW - Open Ditch Leveling | <ul style="list-style-type: none"> • OSW—On Site Waste Treatment • PD - Ponds / Dams • RBD - Road Boring/Drainage • R - Reclamation • SA - Dealer/Service Co./Government Agency/
Consultant/Insurance Agency • SP - Site Prep • SWU - Sewer/Water/Underground Utilities • TH - Trucking / Hauling • TW - Terraces / Waterways • WM - Water Management |
|---|---|
- Other: _____

- Active Contractor Membership - \$295
(One hundred seventy dollars (\$170) for Illinois Membership plus One hundred twenty five dollars (\$125) for National Membership)
 (Active members are individuals engaged in the business of entering into contracts for performing work that will result in soil, land, natural resource conservation or rehabilitation, water conservation, control and prevention of soil erosion, depletion and misuse of natural resources and soil and water pollution and contamination.)
- Associate Membership - \$295 (Associate members are those businesses that manufacture or sell equipment, materials or services used by active members)
- Affiliate Membership - \$85 (Affiliate members are individuals employed by an active member in the business that makes the active member eligible for membership)



FEATURED LICA BENEFIT: SERVICE SUPPLY CATALOG

**Get a 5% Credit toward
future purchases just for
being a LICA member!**



QUALITY CONTRACTOR SUPPLIES IN ONE PLACE!



Introducing the first ever catalog created especially for the heavy equipment contractor!

EARTHMOVERS and EXCAVATORS EDITION

- Equipment Accessories
- Truck and Trailer Accessories
- Maintenance Parts, Components, and Tooling
- Shop Equipment and Tooling
- Office/Shop Fixtures and Furnishings
- Oil, Grease, and Fuel Handling
- Lifting and Rigging
- Job Site Tools and Equipment
- Operations and Personnel

LICA members receive a 5% credit on each purchase, redeemable at the beginning of the next year on any purchase!



EXCLUSIVE BENEFIT for LICA MEMBERS!

Service Supply is pleased to offer exclusively to LICA members a 5% Rewards Program on all purchases. Members will enjoy a 5% credit toward Service Supply items with each purchase, redeemable at the beginning of each new year.



SERVICE SUPPLY AMERICA | 1702 State St., Bellevue, Iowa 52031 | www.ServiceSupplyAmerica.com
Office: 563.872.3451 | Toll Free: 855.219.6387 | Fax: 855.219.6388 | Email: sales@servicesupplyamerica.com

CALENDAR OF EVENTS

Illinois

Drainage Workshop
 Richland Community College - Decatur, IL
 August 6 - 8, 2013

Illinois Farm Progress Show
 Progress City USA - Decatur, IL
 August 27 - 29, 2013

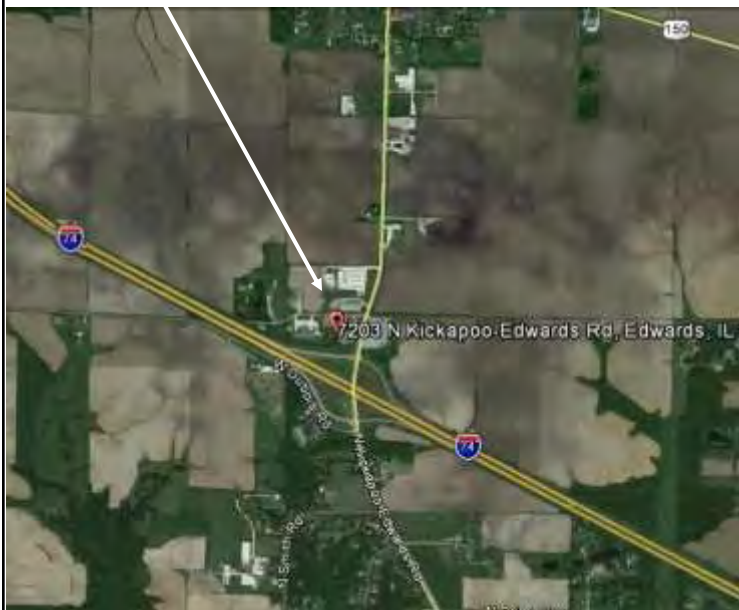
ILICA Exhibit in Partners in Conservation Tent
 ILICA Tiling & DWM Demonstration
 Corner of Mound Road & Brush College Road
 Tuesday - 8/27 - 9 am & 3 pm
 Wednesday - 8/28 - 9 am & 3 pm
 Thursday - 8/29 - 9 am

5th Annual Area 3 Golf Outing
 Pine Lakes Golf Course - Morton, IL
 Friday, September 13, 2013
 12 Noon - Lunch; 1 pm - Shotgun Start; Dinner 6 pm

National

LICA Winter Meeting
 Riviera Hotel - Las Vegas, NV
 March 2 - 3, 2014
 Con Expo - Las Vegas, NV
 March 4 - 8, 2013

September 7 Board Meeting Location - **Jubilee Café** -
 7203 N. Kickapoo-Edwards Rd, Kickapoo, Illinois



ADVERTISERS INDEX

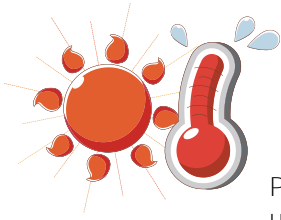
Agri Drain Corp	15
BM Truck Equipment	5
Brown Bear Corp	12
Contractor Classifieds	5
Envision Insurance Group.	5
Fratco, Inc.	15
Great Lakes Inter Drain	15
INCA	23
JCG Midwest.	2
Martin Equipment of Illinois	24
Midwest Auger Aerator.	24
Port Industries Inc..	2
Precision Intakes Ltd	24
Prins Insurance Inc./United Fire Group	9
Prinsco	4
RWF Bron	23
Schlatter's	5
Springfield Plastics Inc.	24

Directions to:

Jubilee Café - 7203 N. Kickapoo-Edwards Rd

The Jubilee Café is just off I-74 at Exit 82, the Kickapoo-Edwards exit. Take Exit 82 from either I-74 East or I-74 West and head North on Kickapoo-Edwards Road. The Jubilee Café is on the West or left hand side of the road, just past the Mobil station and across the road from the Shell station. (They're famous for their home-made pie)

SAFETY FEATURE: TYPES OF HEAT STRESS



Workers who are exposed to extreme heat or work in hot environments may be at risk of heat stress. Exposure to extreme heat can result in occupational illnesses and injuries. Heat stress can result in heat stroke, heat exhaustion, heat cramps, or heat rashes. Heat can also increase the risk of injuries in workers as it may result in sweaty palms, fogged-up safety glasses, and dizziness.

Prevention of heat stress in workers is important. Employers should provide training to workers so they understand what heat stress is, how it affects their health and safety, and how it can be prevented.

Heat Stroke

Heat stroke is the most serious heat-related disorder. It occurs when the body becomes unable to control its temperature: the body's temperature rises rapidly, the sweating mechanism fails, and the body is unable to cool down. When heat stroke occurs, the body temperature can rise to 106 degrees Fahrenheit or higher within 10 to 15 minutes. Heat stroke can cause death or permanent disability if emergency treatment is not given.

Symptoms of heat stroke include:

- Hot, dry skin or profuse sweating * Hallucinations * Chills
- Throbbing headache * High body temperature
- Confusion/dizziness * Slurred speech

First Aid

Take the following steps to treat a worker with heat stroke:

Call 911 and notify their supervisor.

Move the sick worker to a cool shaded area.

Cool the worker using methods such as:

Soaking their clothes with water.

Spraying, sponging, or showering them with water.

Fanning their body.

Heat Exhaustion

Heat exhaustion is the body's response to an excessive loss of the water and salt, usually through excessive sweating. Workers most prone to heat exhaustion are those that are elderly, have high blood pressure, and those working in a hot environment.

Discussion Date: _____

Employee Participants

Symptoms of heat exhaustion include:

- Heavy sweating * Extreme weakness or fatigue
- Dizziness, confusion * Slightly elevated body temperature
- Pale or flushed complexion * Muscle cramps * Nausea
- Fast and shallow breathing * Clammy, moist skin

First Aid

Treat a worker suffering from heat exhaustion by::

Have them rest in a cool, shaded or air-conditioned area.

Have them drink plenty of water or other cool, nonalcoholic liquids.

Have them take a cool shower, bath, or sponge bath.

Dusting powder may be used to increase comfort.

Recommendations for Employers

Employers should take the following steps to protect workers from heat stress:

Schedule maintenance and repair jobs in hot areas for cooler months.

Schedule hot jobs for the cooler part of the day.

Acclimatize workers by exposing them for progressively longer periods to hot work environments.

Provide cool water or liquids to workers.

Provide rest periods with water breaks.

Provide cool areas for use during break periods.

Monitor workers who are at risk of heat stress.

Recommendations for Workers

Wear light-colored, loose-fitting, breathable clothing such as cotton.

Avoid non-breathing synthetic clothing.

Gradually build up to heavy work.

Schedule heavy work during the coolest parts of day.

Take more breaks in extreme heat and humidity.

Take breaks in the shade or a cool area when possible.

Drink water frequently. Drink enough water that you never become thirsty. Approximately 1 cup every 15-20 minutes.

Be aware that protective clothing or personal protective equipment may increase the risk of heat stress.

Monitor your physical condition and that of your coworkers.



Source: Center for Disease Control and Prevention

JUNE MEMBERSHIP DRIVE PUSHES ILICA NUMBERS HIGHER!

Jerry Biuso returned to Illinois for a summertime membership drive starting in Area 1 near Moline. National LICA President, Steve Miller, agreed to cart Jerry around during the visit so each prospective member had the chance to meet 2 LICA officers along with our Illinois contractors who participated. Brian Brooks had been talking with Jerry for a week or more prior to his arrival, and by the time Jerry's plane finally arrived in Moline, Brian and Steve had signed up one member already!



The first day was a busy one with Brian and Larry Rhodenbaugh setting up meetings with prospective members around Moline but it was very productive as well. By the time Jerry and Steve arrived at the ILICA office in Brimfield, they already had 3 new members. After spending some time reviewing the new LICA benefits with Janet, they headed into Peoria for a meeting with Caterpillar that evening.

The next day, alternate director Eric Layden hosted a cook out at his shop near Hoopston for current and prospective members from Area 4 and Indiana as well. Eric and his family provided a delicious grilled out meal with several side dishes and made everyone feel welcome. And although several of the prospective members did not show up, some long time members where there, allowing ILICA to reinforce their commitment to membership all over the state. We appreciate Eric's participation and plan to return to that part of Area 4 during future membership drives.



When it was all said and done, 6 new contractor and 4 new associate members were added to our roster, bringing our contractor membership number up to 208. Great Job Guys and Thank You to Jerry Biuso and Steve Miller for their support!




August 27 - 29, 2013

Progress City
Decatur, IL

Illinois LICA will join our partner agencies in the Conservation Tent exhibits. Volunteers needed to help in the ILICA booth all days. Call the ILICA office to sign up!





Do You Know Someone Who Could Benefit From Membership With ILICA?

Call Them Today And Invite Them To One Of Our Many Summer Events!

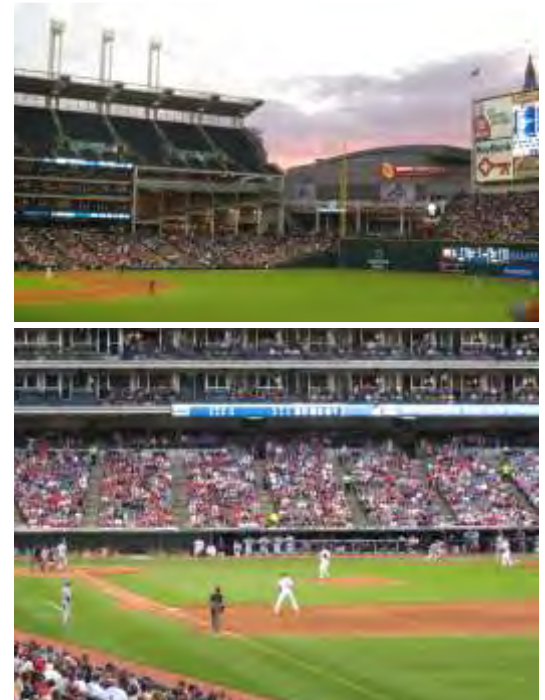


SUMMER LICA CONVENTION IN CLEVELAND

This year's summer LICA convention was hosted by Ohio LICA and several interesting tours were scheduled before the official start of the conference on Thursday evening. Those arriving early enjoyed a tour of Lake Erie's South Bass Island on Tuesday. Wednesday, two tours were offered; one to Gradall and Dover Dam with a second tour set for Amish Country. Both tours ended up at the Pro Football Hall of Fame, so it was a busy but interesting day for everyone. Especially as both tours spent some time in shelters as a violent storm passed through that area. Everyone stayed safe though and returned to the hotel late that evening.



On Thursday, guests could take "Lolly the Trolley" for a guided tour of University Circle and Little Italy, ending up at the Art and Natural History Museums. A second tour to Lincoln Electric was also scheduled for Thursday which included a robotic demonstration and plant tour. Thursday evening marked the official start of the conference with an associates night reception with a "50's Rock & Roll" theme, as you can see in some of the photo's below. On Friday evening it was a short walk to a picnic dinner on the patio of Progressive Field and a Cleveland Indians game against the Kansas City Royals. It's surprising how beautiful baseball fields can be ... and the Indians won as well! A visit to the Rock & Roll Hall of fame with dinner at the House of Blues concluded the convention on Saturday evening. Great Job Ohio LICA!



THANK YOU!



The family of Larry Adreon would like to extend our sincere thank you to all our ILICA family. Whether you sent a card, plant, donation, or attended the services, we cannot begin to tell you how much that warmed our hearts.

My parents were always so eager to hear about our ILICA friends and all the fun that David and I have with this very special group.

Sincerely,

David and Lori Kennedy
Daniel, Jamie and Kennedy Martin
Bradley Kennedy

INCA

2427 Batestown Road
Danville, IL 61832
1-800-747-8195
www.tile-plow.com

Serving Industry, Construction and Agriculture since 1993



WATER MANAGEMENT PRODUCTS ■ TILE PLOWS & TRAILERS ■ HYDRAULICS



NEW for 2013 - BRON 350
350 Horsepower Self Propelled Drainage Plow
Contact BRON for details

PLOWING AHEAD
in Farm Drainage

BRON Self Propelled Drainage Plow

BRON's line of Self Propelled Drainage Plows has set the standard in Farm Drainage. BRON manufactures 750 Double Link Plows, 750 RC Link Plows and 750 Cantilever Plows. Engineered from the ground up, the BRON Drainage Plow gives you better control, higher productivity and extreme comfort while offering more features than any other drainage plow on the market.

- Balanced Weight Distribution
- Ergonomic Cab Comfort
- FOPS/ROPS Certified
- Telescopic Tracks
- Enhanced Operators Visibility
- Tri-Core Cooling System



750 Cantilever Plow



750 Double Link Plow



750 RC Link Plow

BRON
POWER TO PERFORM

rwfbron.com
1.800.263.1060

ILLIC131102-3501-01



Springfield Plastics, inc.

CONSISTENT QUALITY AT EVERY INCH

Your Supplier for Quality Drainage Products
A Complete Line of the HEAVIEST FITTINGS on the Market



QUALITY YOU CAN COUNT ON,
THE TREATMENT YOU DESERVE

35TH ANNIVERSARY

1-800-252-3361
www.spipipe.com

THE ONLY U.S.
MANUFACTURER
CERTIFIED AS USING
ONLY 100% VIRGIN
MATERIAL
SINCE 2000

ILICA SUPPORTER FOR 35 YEARS

MARTIN
E q u i p m e n t

Goodfield, IL 309-965-2502	Springfield, IL 217-528-4347	Tolono, IL 217-485-6755
Rock Island, IL 309-787-6108	Peru, IL 815-224-4711	Cedar Rapids, IA 319-365-0515
Dubuque, IA 563-588-1950	Ashland, MO 573-657-2154	Palmyra, MO 573-769-2274

TRI-STATE
CONSTRUCTION EQUIPMENT CO.



"LIFE'S SHORT—DIG FAST!"

BUCKEYE 7200 MAGNUM



- STATE-OF-THE ART DESIGN
- HIGHER PRODUCTION
- BETTER BUILT

MIDWEST AUGER-AERATOR

AUGER BACKFILLERS / WHEEL TRENCHERS
AUTHORIZED DEALER — BUCKEYE / SPEICHER
1-800-232-7008



Precision Intakes

Full Line of Surface Water Intakes

- 8" & 10" riser with patented 8" & 10" combination Tees.
Also 6" square & round risers with patented reducing Tee.
- Constructed of heavy-weight, high-density polyethylene.
- Parts highly adjustable & interchangeable with others on the market.
- Orifice plate placed at tee level or at ground level.
- Exclusive locking device on each part.
- User Friendly-Priced effectively.
- Adaptor available to repair old metal or broken intakes.



Why inventory 2, when 1 serves both!



"Dealer Inquires Welcome"

~~PRECISION INTAKES~~

Norm & Coretha Rozendaal
2064 Republic Ave West
Monroe, IA 50170

(800) 932-7611
(641) 259-2651
(641) 259-3218 Fax