



## Land Improvement Contractors Of America · Illinois Chapter

*May - June 2021*

***Past President***

Grant Curtis

***President***

Steve Anderson

***Vice President***

Eric Layden

***First Vice President***

Jon Seevers

***Executive Secretary***

Ryan Arch

***Treasurer***

Bill Dean

***Associate Director***

David Randolph

***Executive Director***

Ryan Arch

**Directors**

**Area 1**

Brian Brooks

**Area 2**

Stuart Anderson

John Andermann

**Area 3**

Wes Litwiller

Grant Curtis

**Area 4**

David Kennedy

Lee Bunting

**Area 5**

Cole Brownfield

**Area 6**

Bill Dean

Scott Day

**Area 7**

John Barttelbort

**Area 8**

Tom Beyers

## AREA 6 GOLF OUTING & TRAP SHOOT JUNE 18, 2021



*(page 15)*

## ILLINOIS INFRASTRUCTURE REPORT CARD



*(page 6)*

### Also Featured Inside:

- ▶ **Extension Connection: Simplifying Drainage Layout: Drain Nets for Visualizing Surface Features** *(page 12)*
- ▶ **Fratco Update on Resin Shortage** *(page 16)*

Illinois LICA  
112 Exchange St., Ste. 2  
Galva, IL 61434



# NO-RISK SOLUTION

**Create long-term value for your customers' fields with tile drainage systems from Springfield Plastics, Inc.**



Only Springfield Plastics uses **100% VIRGIN RESIN:**

- Lasts for generations
- Improved flexibility
- No cracks or soft spots
- Consistent strength throughout the plastic material

800-252-3361 • [spipipe.com](http://spipipe.com)

## Schlatter's Inc.

Intelligent Water Management™



Drainage Flows  
GPS Machine Control  
Design Software  
Custom Fabrication

16179 W 500 S  
Francesville, IN 47946  
(219) 567-9158  
[www.SchlattersInc.com](http://www.SchlattersInc.com)



# ORANGE

more than a color™

**Hickenbottom Inc.**

LOOK FOR THE BRIGHT ORANGE INLET - HICKENBOTTOM'S TRADEMARK®

Visit us at the NEW [hickenbottominc.com](http://hickenbottominc.com)!

HBI-12516

# The ILICA News



Editor / Advertising Manager  
**Ryan Arch**

Past President  
**Grant Curtis, Sciota**

President  
**Steve Anderson, Marseilles**

Vice President  
**Eric Layden, Hoopeston**

1st Vice President  
**Jon SeEVERS, Argenta**

Executive Secretary  
**Ryan Arch, Galva**

Treasurer  
**Bill Dean, Mattoon**

Educational Advisor  
**Professor Richard Cooke**  
University of Illinois

The *ILICA News* is the official publication of Illinois Land Improvement Contractors Association, Inc. at 112 Exchange St., Ste. 2, Galva, IL 61434. (309) 932-1230.

Subscription price is \$50.00/year, issued bi-monthly: Jan.-Feb.; Mar.-Apr.; May-June; July-Aug.; Sept.-Oct.; Nov.-Dec., and also includes one annual directory.

## FEATURES

Illinois Infrastructure Report Card ..... 6

Area 6 Golf Outing & Trap Shoot ..... 15

Fratco Update on Resin Shortage ..... 16

## COLUMNS

President’s Message ..... 4

2021 Board Member Schedule & Attendance. .... 5

New Members. .... 5

ILICA Ladies Page: Home Canning - How to Preserve Summer’s Bounty .. 8

Extension Connection ..... 12

ILICA Trivia ..... 18

Advertisers Index ..... 19

Calendar of Events ..... 19

Featured LICA Benefit: The LICA Benefits Platform. .... 20

Safety Feature: Heat Related Illnesses ..... 22

# Northland Trenching Equipment, LLC

*"We are the largest volume supplier for this type of equipment in the US"*



**Inter-Drain**  
Plows & Trenchers

**TRIMBLE GPS SYSTEMS**



The Inter-Drain plow, three types, double link, single cantilever, or single link, each in three sizes. Cat, Cummins or Volvo power. Offset available.



The Inter-Drain chain trencher. Four size choices, mechanical or hydraulic chain drive, vertical and offset available. Cummins, Volvo or Cat power.

**FULL SERVICE AND REBUILDS**

**HUGE PARTS INVENTORY**

**Corporate Office**  
12929 410th Avenue  
Waseca, MN 56093  
Phone: (507) 835-4214  
Fax: (507) 835-2032

**Eastern Division - Indiana**  
3578 North State Road 59  
Brazil, IN 47834  
Phone: (812) 835-2900  
Fax: (812) 835-2535

Email: [nte@hickorytech.net](mailto:nte@hickorytech.net)  
[www.northlandtrenching.com](http://www.northlandtrenching.com)



## PRESIDENT'S MESSAGE



Funny how some things don't change over the course of time. As I look back to when I last served in this position, the worst president in history was in office. Hopefully, the readers are not thinking of me. Now 10 years later, he is back and it is going to get ugly for us small businessmen.

Higher costs with anything related to oil; higher taxes as well as more things taxed; new employment regulations and hiring rules; the total sellout of this country's strategic position, and a host of things not mentioned.

Now that you are completely depressed, perhaps I can raise your spirits. After all, we are LICA members. We take it all in stride and do some darn fine work being environmentalists long before it was all the rage. This year looks to be a fine year for putting that on display once again with the several projects we have on the docket from a tube and riser and bioreactor, a wetland construction, and work at the Farm Progress show once again. And since the tilers in our group will be waiting on tile till who knows when, perhaps we will see your smiling faces ready to help at these sites this summer. For the new members, these projects are a great way to get to know each other;

this coming after the end of the day when the beverages are broken out to wash down the dust. Though with the proliferation of cabs, it doesn't quite measure up to the old days on a 760 scraper and good stiff spring breeze. Now that was when one really needed a mask mandate.

On a personal note, I feel honored that you would have me serve again as president. My goals for this term are to implement the strategic plan we have worked on the last couple years and to encourage all members to be on the committees, serve as directors, even be an officer. While honored to serve once again, I must say that I am disappointed that I needed to. You are really missing something when you don't just ask anyone that has. The real value of a trade association is in the information sharing, fellowship, and support of its members with each other. While the benefits are great when you can use them, don't deny yourself the greatest one, involvement. Even an introvert like myself did it, why can't you?

Bring on the new year, LICA is ready for it. Let's kick the tires and light the fires. Work safe, work smart, and maybe we might have a dime left after taxes come next year!

Sincerely,

Steve Anderson



Rural America's Largest Plat & Directory Publisher Since 1981

### NEW MEMBER GIFT VOUCHER

#### How to use the discount

Contact Farm and Home Publishers to be directed to your area representative. Present this voucher to be applied toward your new 1/8 page print ad for the area you wish to represent.

#### BUILD AND GROW TOGETHER

**Farm and Home Publishers**  
P.O. Box 305, Belmond, Iowa 50421  
641.444.3508  
info@farmandhomepublishers.com

# 50% OFF

#### NEW MEMBER OF LICA & NEW CUSTOMER OF FHP

Receive HALF OFF 1/8 Page Business Ad (Limit One County)  
One Rural Directory (Of Represented County)  
Total Due On Order \$185 + P&H (TOTAL VALUE \$370)  
(Limit One Voucher Per New Member, Not Valid With Any Other Offer)

# NEW MEMBERS

## Active Contractors

**Cole Brownfield**

**Bro-Mac & Sons, Inc.**

38547 E. CR 800 N

Mason City, IL 62664

Ph: 217-652-6997

Email: cmb788@gmail.com

**Nicholas Helm**

**JRH Services, Inc.**

1715 N. 21st St.

Decatur, IL 62526

Ph: 217-422-0909

Email: nick@jrhservicesdecatur.com

Website: jrhservicesdecatur.com

## Associate Members

**A&E Construction Supply**

**Andy Manske**

54090 Loren Dr.

Mankato, MN 56001

Ph: 507-345-3252

Email: office@plowandtrencher.com

Website: plowandtrencher.com

## 2021 BOARD MEMBER MTG. ATTENDANCE

A = absent      P = present      C = cancelled meeting

Area / Director	Feb	Mar	May	Aug	Sep	Nov
<b>Pres:</b> Steve Anderson	P	C				
<b>VP:</b> Eric Layden	A	C				
<b>1st VP:</b> Jon Seevers	P	C				
Area 1 - Brian Brooks	P	C				
Area 2 - Stuart Anderson	P	C				
Area 2 - John Andermann	P	C				
Area 3 - Wes Litwiller	P	C				
Area 3 - Grant Curtis	P	C				
Area 4 - David Kennedy	P	C				
Area 4 - Lee Bunting	P	C				
Area 5 - Cole Brownfield	P	C				
Area 6 - Scott Day	P	C				
Area 6 - Bill Dean	P	C				
Area 7 - John Barttelbort	P	C				
Area 8 - Tom Beyers	P	C				
Associate Dir: D. Randolph	P	C				

## BOARD & MEMBERS' MEETING SCHEDULE

Unless changed by the Board during the year, the ILICA business meetings are scheduled as follows:

**May 15, 2021** - Regular Meeting of the Board:

Virtual & In-Person, Decatur

**Aug. 21, 2021** - Picnic & Members' Meeting:

Kennedy Farm Drainage, Colfax

*Exact location, meeting times & other details will be published in the ILICA News and sent to members via mail and/or email.*



*Thank You*

**Chase Environmental Services**

For Partnering With Illinois LICA on the Virtual Septic Training Series



**BERNS, CLANCY AND ASSOCIATES**

ENGINEERS • SURVEYORS • PLANNERS

WEB: [www.bernsclancy.com](http://www.bernsclancy.com)

405 EAST MAIN STREET  
POST OFFICE BOX 755  
URBANA, ILLINOIS 61803-0755  
PHONE: 217 - 384 - 1144  
FAX: 217 - 384 - 3355

101 THORNTON BUILDING  
28 WEST NORTH STREET  
DANVILLE, ILLINOIS 61832-5729  
PHONE: 217 - 431 - 1144  
FAX: 217 - 431 - 2929

# ILLINOIS INFRASTRUCTURE REPORT CARD

Adapted from the 2018 Report Card for Illinois' Infrastructure executive summary. Find the full summary and report at: <https://infrastructurereportcard.org/state-item/illinois/>



Infrastructure is the backbone of our daily lives and communities. While we don't always acknowledge it, the condition of our infrastructure has a very real impact on every person and business. We all depend on roads and bridges to get us where we are going, water infrastructure that delivers clean water to our taps, and a system of inland waterways, ports, rail and transit to move goods and people that fuels our economy.

Illinois has a unique competitive economic advantage being at the crossroads of the country's rail, air, roadway and waterway systems. Historically, large investments were made in our infrastructure to capitalize on these advantages, which created and promoted growth and advantages for Illinois' economy and citizens. In recent years however, there has been a trend of underinvestment that threatens our competitive advantage and the health, safety and welfare of our citizens.

The Report Card was created to help Illinois understand the state of our infrastructure. As civil engineers, our job is to plan, design, construct, and maintain our infrastructure networks and this document allows us the opportunity to share that information with the public. The Report Card provides a snapshot for residents and policymakers to engage in conversation about where we are and where we want to be. We hope that this information provides the insight needed to start that conversation and ignite action.

## How You Can Get Involved

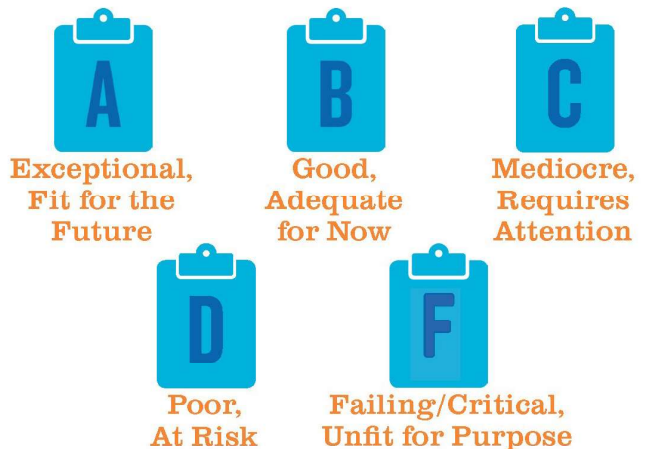
- 1 Get the full story behind this Report Card at [www.infrastructurereportcard.org/illinois](http://www.infrastructurereportcard.org/illinois).
- 2 Find out the condition of the infrastructure near you on the Save America's Infrastructure app available on iTunes and GooglePlay.
- 3 Ask your elected leaders what they're doing to make sure your infrastructure is reliable for the future. Use your zip code to find your list of elected officials at [www.infrastructurereportcard.org/take-action](http://www.infrastructurereportcard.org/take-action).

## ILLINOIS GRADE SUMMARY



## About the Grades

Infrastructure is graded based on eight criteria: **capacity, condition, funding, future need, operation and maintenance, public safety, resilience, and innovation.** ASCE grades on the following scale and defines these grades as:



# TRUST ISN'T GIVEN. IT'S EARNED.

**Rick Gosser**  
Crawford Drainage  
ADS Contractor

There's a reason more than a billion feet of ADS pipe lies beneath America's heartland. It's simple; we build trust. Since 1966, contractors across Illinois have trusted ADS to deliver total ag water management solutions. Whether it's tile, lift stations or water control structures, ADS has everything you need to improve the land for future generations to come.

See Rick's story at [ads-pipe.com/stories](https://ads-pipe.com/stories).



# ILICA Ladies Page

So, you planted a garden, lucked out when your property included fruit trees, stumbled upon a produce sale you just couldn't pass up, or joined a CSA. Good for you! Now what? What will you do with all that bounty?

You have options:

- quickly consume your harvest before it spoils
- give it away
- preserve it to enjoy in the future, or for gifting!

One of the best ways to preserve is known as “home canning”—or water bath canning, a method of food preservation that is making a big comeback.

Canning is not difficult, but it is a procedure that should be followed precisely. You begin by sterilizing canning jars in boiling water. Then, once you've filled them with fruit, salsa, tomatoes, jam, jelly, or another prepared recipe, you boil them again.

Proper water bath canning requires “heat-processing,” which means to hermetically seal the jars so that no air or tiny organisms can get in. It also kills any undesirables that may be present, like bacteria, yeast, or mold. This process destroys naturally occurring enzymes that cause food to spoil.

All you need are a few pieces of equipment, a little time, and beautifully ripe produce. Your investment now will pay off in spades come winter when you'll be able to enjoy summer all over again.

Beginners should start with fruit, jams, pickles, and tomatoes because these items are highly acidic and do not require a pressure canner.

## HOW TO CAN

### Wash equipment

Wash your new jars, lids and screw rings in hot, soapy water. Rinse well and drain.

### Sterilize the jars, lids, rings

In an ordinary big cooking pot filled with water, place jars and lids in the water and bring to a boil over high heat. Allow to boil for 10 minutes. Keep jars hot by turning heat down to simmer until ready to fill. Note: There are canning containers that do not use both lids and rings. Some have clamp-on type apparatus, others a single lid. For beginners, I highly recommend the more reliable ring-plus-lid option. Recycled jars with lids, like that empty mayonnaise or pickle jar, will be challenging to achieve a proper safe seal.

### Make the recipe

Use one of the recipes below, or another recipe of your choice (see Resources), that has been created specifically for canning. Again, if you are a beginning canner, start with a nice jam recipe or fruit in syrup.



### Carefully remove jars from pot

Empty the hot water from each jar back into the pot so you won't have to heat new water later.

### Place jar on cutting board or towel

Placing jars on a cold countertop could cause thermal shock, which could crack the jars. Place the funnel in the mouth of the jar; carefully ladle in the food item you have just prepared.

### Allow headspace

The empty space between the top of the food and the top of the jar is called headspace. The amount of space depends on what you're canning. Your recipe should indicate the amount of headspace required by that particular item.

### Release air bubbles

Air bubbles can prevent jars from sealing and may affect the color of canned goods. Get rid of bubbles by sliding a nonmetal spatula or something like a plastic chopstick between the food and the inside of the jar. Make sure the item you use has been sterilized. You don't want to introduce bacteria once you've been so careful to sterilize everything.

### Clean up jars

Wipe jar rim and threads (the grooves the lid screws onto) with a damp cloth. Food left on jar rim or threads might prevent the jar from sealing once the lid and ring have been applied.

### Apply lids and rings

With tongs, transfer one jar lid from the hot water to the top of each jar, making sure it is centered perfectly on top of the jar. Apply a screw ring to each jar and twist until it is just finger-tight. Do not overtighten. The ring is to hold the lid in the correct position so that the seal can take place as the contents of the jar cool.

### Process

Now, you are ready to process the jars. Place them back into the large pot of hot water. Once all the jars that will fit are in the pot, add enough water to cover the jars by at least one inch.



# ILICA Ladies Page (cont.)

Cover the pot and bring the water to a rapid boil over high heat. Boil jars for the required “processing time” indicated in your recipe of choice. For proper canning, water must boil rapidly during the entire processing time.

## Turn off heat

Remove the lid from the large pot. Let jars cool in the water for five minutes. Remove jars from the pot, being careful not to tilt the jars. Place them on a towel. Allow to cool 24 hours.

## Test for proper seal

To test each jar to make sure it is properly sealed, look at the lid from the side. It should be concave. Next, press on the lid with your finger. If the lid springs back, the jar is not sealed. Immediately reprocess that jar or refrigerate it to be consumed within the next few days. The contents are perfectly edible and delicious, but, since it did not seal properly, you would not want to put it on the shelf to be eaten six months from now.

## Label and store

Make and apply labels for your jars that indicate the name of the contents and the date canned. Store in a cool, dark, non-humid place for up to one year.

## BASIC EQUIPMENT

### New canning jars

These are specially made, tempered jars with lids designed for water bath canning. The jars can be reused for many years. Canning jars come in various sizes and are usually sold in boxes of 12. Each jar includes a two-piece lid. Look for Ball Mason jars in supermarkets, hardware stores, and discount department stores like Wal-Mart and Target.

### Large covered water bath canner

A canner must be deep enough to completely immerse the jars with 1 to 2 inches of water covering the top of the lids. Canners have a rack to keep the jars off the bottom of the pot. You can improvise by using any large stockpot with a wire cooling rack placed in the bottom.

### Jar lifter

A very handy tool for removing freshly processed jars from the boiling water. It looks like wide tongs.

### Wide mouth canning funnel

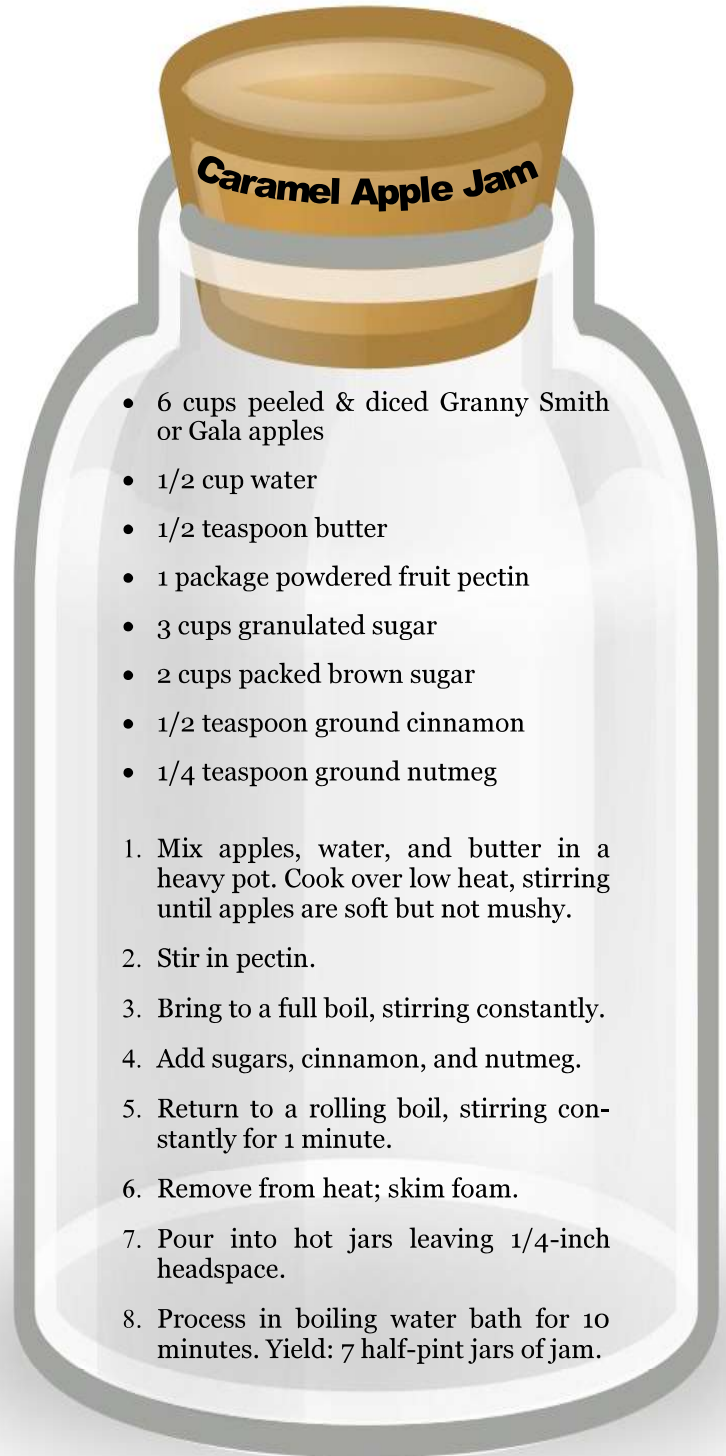
This wide-mouth funnel makes filling your jars simple in a way that is safe and tidy.

### Non-metallic spatula

Or, a long plastic knife or chopstick to run through the filled jars to release trapped air bubbles.

## Linens

A clean dishcloth to wipe the rims before placing the lids on the jars and a heavy dish towel or absorbent mat to sit the hot jars on after they've come from the canner.



- 6 cups peeled & diced Granny Smith or Gala apples
- 1/2 cup water
- 1/2 teaspoon butter
- 1 package powdered fruit pectin
- 3 cups granulated sugar
- 2 cups packed brown sugar
- 1/2 teaspoon ground cinnamon
- 1/4 teaspoon ground nutmeg

1. Mix apples, water, and butter in a heavy pot. Cook over low heat, stirring until apples are soft but not mushy.
2. Stir in pectin.
3. Bring to a full boil, stirring constantly.
4. Add sugars, cinnamon, and nutmeg.
5. Return to a rolling boil, stirring constantly for 1 minute.
6. Remove from heat; skim foam.
7. Pour into hot jars leaving 1/4-inch headspace.
8. Process in boiling water bath for 10 minutes. Yield: 7 half-pint jars of jam.

### The LICA Creed



Land, the foundation of the Nation  
 The basis of all wealth  
 The heritage of the wise  
 The thrifty and prudent  
 The poor man's joy and comfort  
 The producer of food, fiber and fuel  
 The basis of factories  
 The foundation of banks

All that man builds is from the land. We often take it for granted or even abuse it; And yet many, unthinkingly and unknowingly pass the land by. What man does with the land will be the deciding factor of his survival.



### Quality Products...Unequaled Service

Over 50 years of manufacturing and supplying corrugated metal pipe and related highway drainage products.

Havana, IL Office (309) 543-2271  
 Monmouth, IL Office (309) 734-4113  
 Corporate Office (800) 735-7312

Email: [sales@metalculverts.com](mailto:sales@metalculverts.com)

[www.metalculverts.com](http://www.metalculverts.com)

### MAURER-STUTZ

ENGINEERS SURVEYORS

#### Conservation Engineering Services

- State and Federal Permitting Assistance
- Familiarity with NRCS Conservation Practice Standards
- NRCS Technical Service Provider (TSP)

Contact Gayle Baker, PE  
**309.693.7615**

3116 N. Dries Lane, Suite 100 • Peoria, IL 61604 • mstutz.com



1807 179th St North  
 East Moline, IL 61244  
 (309) 751-9540

120 East Martin Dr  
 Goodfield, IL 61742  
 (309) 965-3300

VERMEERMIDWEST.COM

### Support Our Associates

They Support Us!



### REMINDER:

# FREE Classified Listings for Contractors!

Contact the ILICA Office for More Info: 309.932.1230

# YOUR CONSTRUCTION INSURANCE PARTNERS



**Dimond Bros.**

Insurance Since 1867

[DimondBros.com](http://DimondBros.com)

**Peru**

1701 4th St.  
Peru, IL 61354  
815-663-9905

**Fairbury**

118 N. Third St.  
Fairbury, IL 61739  
815-692-2343

**Bulk mulch available!**

**309-654-2261**

[www.xylemltd.com](http://www.xylemltd.com)

Cordova, IL 61242

**XYLEM<sup>LLP</sup>**

**Quality wood chips for bioreactors!**

# SIMPLIFYING DRAINAGE LAYOUT: DRAIN NETS FOR VISUALIZING SURFACE FEATURES

By: *Richard Cooke and Falasy Anamelechi*

LiDAR data coverage is available for most of the US, certainly for all the drainage states in the Midwest. The introduction of this data has simplified drainage design. It has facilitated watershed-based design, and the identification and sizing of run-on areas and depressions. Some contractors use LiDAR data for quick, preliminary drainage system layout; others even use it for final designs.

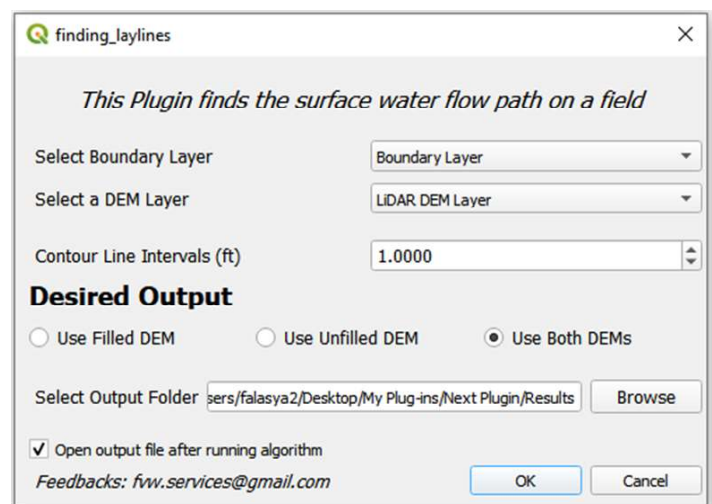
Drainage system layout includes creating contour lines from elevation data, be it from LiDAR, RTK GPS, or otherwise, and using these contour lines to inform the layout of laterals and mains. Experienced designers can identify high points, draws or depressions from contour lines, and incorporate these into the system layout. However, drainage system layout is somewhat of an art. For example, the 2004 issue of Drainage Contractor Magazine includes an article titled **One Farm, Four Designs** with designs from four experienced contractors, including Illinois' Jon SeEVERS, using the same topographic data for a 100-acres field. Each contractor presented a distinct design.

Inexperienced contractors or producers installing their own drainage systems may have trouble visualizing surface features from contour lines. We are proposing the use of **drain nets**, consisting of contour lines and surface flow pathways, herein called **laylines**, to help visualize surface features, and thereby simplify drainage system layout, particularly for inexperienced designers. These drain nets are analogous to flow nets, which comprises equipotential lines and streamlines, that are used for steady-state subsurface flow visualization, and flow determination in regions with irregular geometries. Like equipotential lines and streamlines, contour lines and laylines are at right angles to each other. We are also introducing a one-click QGIS plugin for creating these drain nets from a DEM and a boundary file. DEMs can be extracted from LiDAR data and thinned to a required resolution using the LiDARThAn plugin introduced in the December 2020 issue of this newsletter.

## The Plugin

The Finding\_Laylines Plugin (LAYLINES) is an easy-to-use open-source tool that creates drain nets (consisting of contour

lines and laylines), using a DEM and a boundary file. Basically, the plugin first extracts a DEM from the input DEM, using the input boundary layer as a clip mask. It then creates a version of the extracted DEM in which depressions are filled. In the plugin, depressions are defined as areas where the land slope is less than 0.03%, that is three-hundredths of a percent. Then based on user specification, contour lines and laylines are created based of the unfilled DEM, the filled DEM, or both. The contour lines are created at the user-specified interval. The plugin is easy to use, intuitive, and eliminates the need for an inexperienced designer or a new contractor to be concerned about not being an expert in the use of the QGIS software.



*Figure 1. LAYLINES Plugin Graphical User Interface*

The User's Guide

([http://www.wq.illinois.edu/DG/extraction/LAYLINES\\_User\\_Guide.pdf](http://www.wq.illinois.edu/DG/extraction/LAYLINES_User_Guide.pdf)) and the plugin

(<http://www.wq.illinois.edu/DG/extraction/Laylines.zip>) are provided in the Illinois Drainage Guide.



**Example Application**

An example of the use of the plugin to create a drain net for a field on the University of Illinois’ South Farm is shown in Figure 2. Contour lines for the unfilled DEM, and laylines for both the filled and unfilled DEMs are shown. The two sets of laylines overlap in most of the field. Areas where they do not overlap are indicative of the existence of depressions. There is no indication as to how deep or significant these depressions are; there is an online tutorial from the 2020 Extension/ILICA design workshop that covers the sizing of depressions of a specified depth (<http://wq.illinois.edu/ws2020/Advanced2.htm>)

In fields that are flat enough for drainage water management (controlled drainage), it is recommended that laterals be laid out near parallel with the contour lines. In such instances the laylines can be used to inform the placement of mains. In fields that are too steep for drainage water management, laterals can be laid out near parallel to the laylines. The drain net, therefore, with its combination of contour lines and laylines, is a useful tool for drainage system layout.

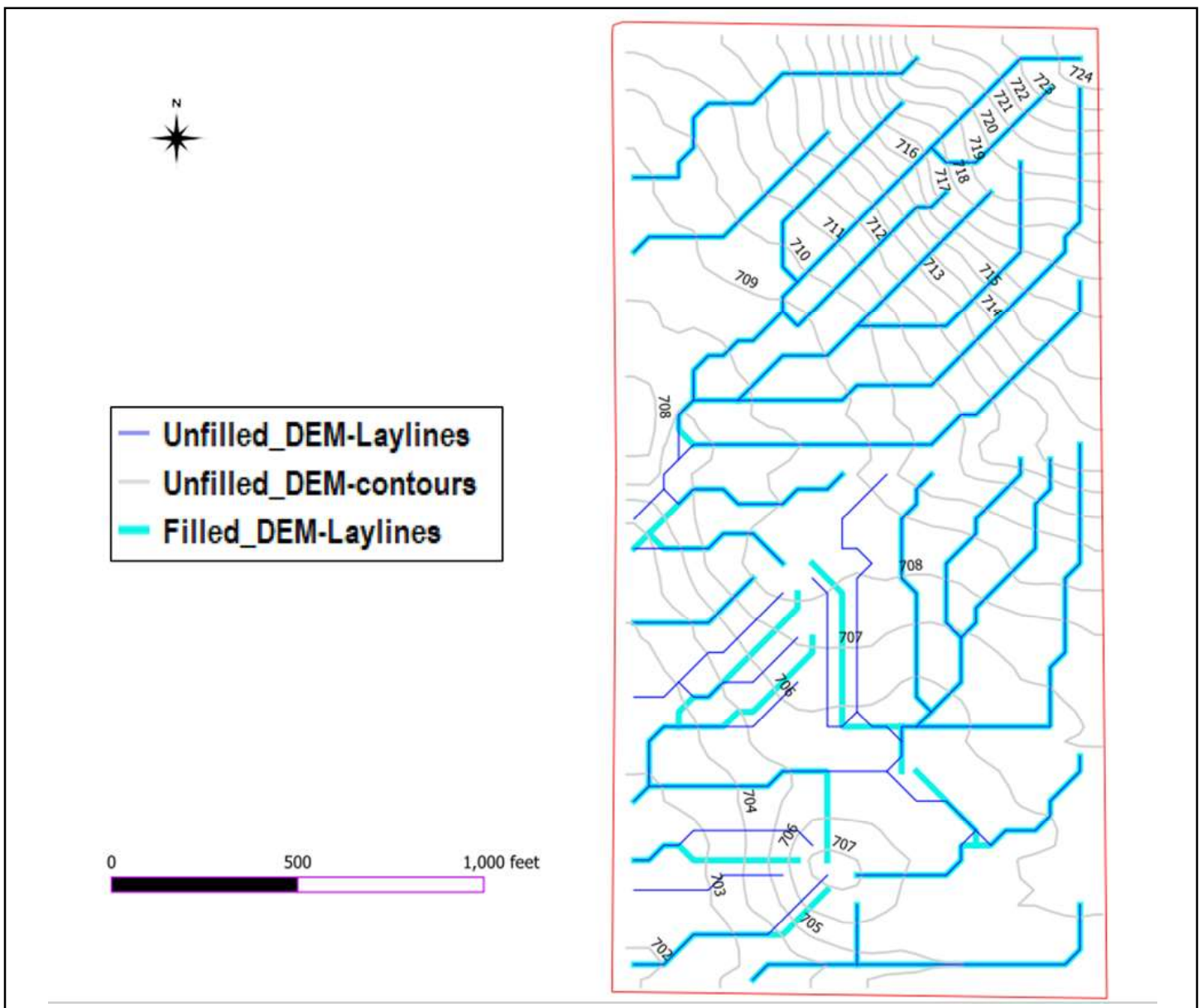
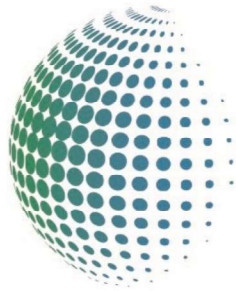


Figure 2. Drain net created with the LAYLINES Plugin.



# ENVISION INSURANCE GROUP

## Four Area Locations to Serve You

**PEORIA • (309) 683-1100**  
1616 W Pioneer Parkway  
Peoria, IL 61615

**MORTON • (309) 263-2400**  
150 B S Main St.  
Morton, IL 61550

**GALESBURG • (309) 343-1168**  
456 E Main St.  
Galesburg, IL 61401

**DECATUR • (217) 422-5000**  
225 S Main St.  
Suite 300, Decatur, IL 62523

Business & Personal Insurance • Life & Health • Benefits • Bonding



**JIM HAWK TRUCK TRAILERS INC**

*TRAILERS... PARTS... SERVICE... RENTALS...*

The Largest Trailer Inventory in North America  
9 Branch Locations Nationwide

**WE PROUDLY OFFER...**



VISIT YOUR NEAREST JIM HAWK TRUCK TRAILERS  
650 FLINT AVE, MORTON, IL 61550

WWW.JHTT.COM

800.421.6559



# COOK'S //AGPS LLC

YOUR CONTINUED SOURCE FOR:



INDUSTRY LEADING FINE GRADE RTK GPS  
MACHINE CONTROL SYSTEMS



Design and machine control for tile drainage, land leveling and surface water management needs.

GPS-GNSS RECEIVERS & ANTENNAS



Announcing our newest NovAtel receivers are able to use GALILEO satellites for better availability near obstructions like trees.

ASK US HOW YOU CAN SAVE TIME SURVEYING  
LESS WITH OUR LIDAR DATA PREP SERVICES

Contact Nate at 989-640-2347 or nate@cookswms.com  
Visit our new website at www.cooksagps.com



# Illinois Land Improvement Contractors Association

## Area 6 Golf Outing & Trap Shoot Friday, June 18, 2021



**McKillip Farm: 9:30 am**

1017 County Rd. 1350th N., Lerna, IL 62440

**Meadowview Golf Course: 1 pm (shotgun start)**

6489 Meadowview Lane, Mattoon, IL 61938



### Event Sponsors



**ALTORFER**



Please RSVP By May 21

**Trap, Golf, & Dinner.....\$ 90.00** - Includes 50 Clays, Green Fees & Golf Cart {18 holes}, Boxed Lunch, Driving Range, 2 Beverage Tickets, Evening Steak Buffet Dinner & Prizes

**Trap Shoot Only..... \$ 15.00 • Golf Only..... \$ 55.00 • Dinner Only..... \$ 40.00**

\*Nine hole options available. Call the office for more details.\*

Name(s):	Trap, Golf, Dinner @ \$90	Trap Only @ \$15	Golf & Dinner @ \$80	Golf Only @ \$55	Dinner Only @ \$40
1. _____	<input type="checkbox"/>	<input type="checkbox"/>	<input type="checkbox"/>	<input type="checkbox"/>	<input type="checkbox"/>
2. _____	<input type="checkbox"/>	<input type="checkbox"/>	<input type="checkbox"/>	<input type="checkbox"/>	<input type="checkbox"/>
3. _____	<input type="checkbox"/>	<input type="checkbox"/>	<input type="checkbox"/>	<input type="checkbox"/>	<input type="checkbox"/>
4. _____	<input type="checkbox"/>	<input type="checkbox"/>	<input type="checkbox"/>	<input type="checkbox"/>	<input type="checkbox"/>

NOTE: Event sponsors receive buy 3 get one free golf registration: \$240/foursome

My preferred foursome is: \_\_\_\_\_  I do not have a preference

Contact Name: \_\_\_\_\_ Phone: \_\_\_\_\_

Enclosed is the check **PAYABLE TO ILICA**, in the amount of \$ \_\_\_\_\_ for registration.

Mail check and this form to:  
**Illinois ILICA - 112 Exchange St., Ste 2 - Galva, IL 61434**

Or complete online:  
<https://www.ilica.net/golf-outings>

**TRAP SHOOT REQUIRMENTS:** Shooters are encouraged to bring their own gun and the correct loads for their gun(s).  
Lead shot acceptable.

# FRATCO UPDATE ON RESIN SHORTAGE

March 17, 2021

FRATCO

# 2021 RESIN SHORTAGE

*An update from Fratco President,  
Chris Overmyer*

**Industry-wide, customers who rely on resin suppliers to manufacture pipe are facing challenges.** After reasonably consistent and predictable markets in 2019 and 2020, the forecast for 2021 was more of the same. With Asia and Europe expecting weak demand, America's exports to these regions were supposed to be fairly small, allowing domestic PE supplies from Houston-area producers to remain stable and steady. As the saying goes, a "series of unfortunate events" unfolded, dealing pipe suppliers unforeseen realities. Saying everything changed overnight in resin production is not an understatement.

At the epicenter was an issue between the Mexican government and Braskem. Braskem is a Mexico-based PE producer who assisted Houston-area suppliers by taking a load off of exports over the last few years. A dispute regarding natural gas costs led to the Mexican government shutting

off the supply of natural gas to the plant—literally—in the middle of the night. This resulted in an immediate zero output of PE product and tipped the balance of supply and demand in the Gulf Region just enough to stabilize and even slightly increase PE prices in North America through the remainder of December; a surprise to everyone involved.

While prices inched up through January, Texas was about to encounter a deep freeze unlike anything they had experienced in modern history. To us in the Midwest, who spend half the winter deeply frozen, the news of impending Texas winter weather didn't sound like a big deal. Yet as the kids say today, Texas is "built different." Most residential buildings have electric heat pumps for climate control, for instance. The sudden demand for power crippled the electrical grid in Texas. The state's rather outdated rules of not allowing some regional

providers to share capacity with others brought some areas to a grinding halt. This led to many Texans being without heat or electricity for an extended period. Large industry wasn't immune to this standstill. Larger small town-sized refineries and reactors that produce everything from gasoline to polyethylene were left idle.

At first, this pause in production didn't seem

“ ”

**Nobody expected the damage that freezing would cause...**

alarming. After all, every hurricane season brings scares that lead to plant evacuation. Once the storm passes, the production lines are usually back up and running in a matter of days. Nobody expected the damage that freezing would



# FRATCO UPDATE ON RESIN SHORTAGE (CONT.)

**85%**  
*of US production  
is shut down*

cause to miles of cast-iron pipes that convey material through plants. When the freeze ended, thawed pipes and cast-iron valves had developed cracks and were rendered unusable. We now find ourselves weeks into a situation where 85% of US production of polyethylene is shut down. Once the smoke clears, there is no roadmap or timeline for full-capacity production.

Every major producer of polyethylene has declared force majeure. This means they're no longer honoring any contractual supply obligations—they simply can't. Think about it: From milk jugs to PPE, garbage bags to medical supplies, every company who relied on contracted, regular deliveries of prime PE are scrambling for material that isn't available. Why? It isn't there. These producers began bidding on the spot market for virgin material. This drove market prices well above the prime contracted price. The irony is that none of that material is available either.

If you're not making prime material, you're definitely not making off-spec material. This caused a rush to the recycled market, bidding the cost up to unprecedented prices in a short amount of time.



**On behalf of Fratco, I apologize to you, our customers, for the inconvenience of this whole experience.**

To say my team and I are deeply sorry feels like an understatement. We understand the difficulty that no market visibility and sudden, measurable price changes cause you, our loyal customers. In all transparency, there is no immediate end in sight to this situation. This means Fratco will be forced to price products according to raw material market conditions. Please understand the unprecedented crisis we find ourselves in nation-wide. This is much bigger than our corrugated pipe market. Other industries are not immune. The supply chain disruption has a huge ripple effect on everyone who relies on plastics. Within our industry, this situation affects those who

*RESIN PRICES*

**+\$0.36/lb**  
*Since June 2020*

**\$1.00/lb**  
*Predicted*

are tirelessly working to restore resin production, the drivers who deliver it to our plants and our Fratco teams who continue producing the best pipe in the business.

I can make no overarching promises, yet you can count on one thing: Fratco will continue supplying you with the highest quality HDPE pipe and accessories through this situation. We cannot forecast what this will involve, how long it will last or when we will see market stabilization. While that may sound extreme, it is indeed the situation we all find ourselves in—together.

Humble regards,

**Chris Overmyer**  
President and CEO

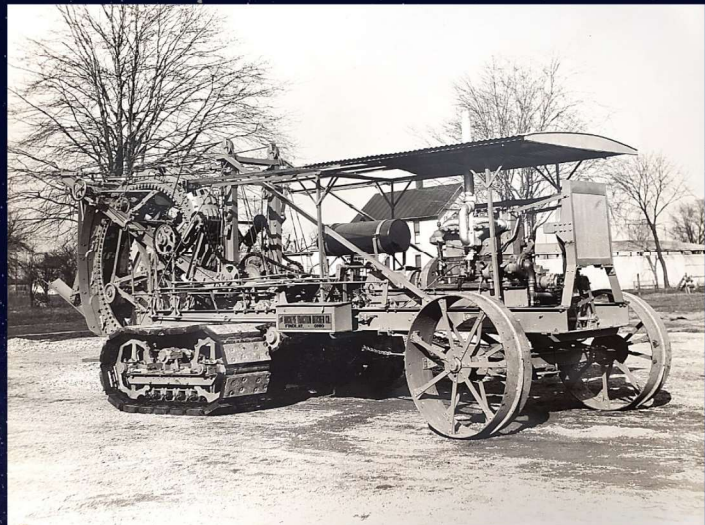


ILICA TRIVIA

*What model number is this Buckeye Ditcher?*



MAR/APR ANSWER:  
GAIL, JOANN, BILL, & DICK IN 1989



BE THE FIRST TO SUBMIT THE  
CORRECT ANSWER TO  
MICHELLE@ILICA.NET

ONE LUCKY WINNER WILL RECEIVE  
A PRIZE!

**Brush Shredder**

Skid Steer Loaders  
2 sizes available



Tractor Mounts  
2 sizes available • 100-160 hp



Self Propelled  
250 or 350 hp options



**Snow Blowers**  
Model ST7 for skid loaders  
Mountings available for Brown Bear tractor carriers



**Auger Backfillers**



Model R31 for High flow skid and compact track loaders with 3000-5500 psi and 30-50 GPM

Model PTOAB36-10 for tractors with hydrostatic or creeper type transmission and 100-160 hp

Self-Propelled tractor carriers with 130-350 hp available and 10'-14' wide backfiller head options



**Brown Bear Corporation**

Corning, Iowa 50841 • 641-322-4220

[www.brownbearcorp.com](http://www.brownbearcorp.com) • [sales@brownbearcorp.com](mailto:sales@brownbearcorp.com)



# CALENDAR OF EVENTS

## Illinois

### **Board of Directors Meeting**

**May 15, 2021**

Board & committee meetings held in-person & virtually

**In-person:** NSEC Bldg., Richland Comm. College  
1 College Park, Decatur, IL 62521

#### **Virtual Zoom meeting:**

<https://us02web.zoom.us/j/9759547353?pwd=c1ZPcjFhSTBTYjhXeERNZnFRTXdOZz09>

Committee meetings: 9 am - 12 pm  
Board Meeting: 1 pm

### **Area 6 Golf Outing & Trap Shoot**

**June 18, 2021**

McKillip Farm - Lerna, IL

Meadowview Golf Course - Mattoon, IL

Trap: 9:30 am    Lunch: 12 pm    Golf: 1 pm

Hotel block: Holiday Inn - Mattoon, IL

### **Constructed Wetland Demonstration**

**July 19-24, 2021**

McCuskey Farm - Broadmoor, IL

Requesting Volunteers

### **Tube & Riser + Bioreactor Demonstration**

**August 9-14, 2021**

Hunt Farm - Blandinsville, IL

Requesting Volunteers

### **Summer Picnic**

**August 21, 2021**

Kennedy Farm Drainage

30272 Mackinaw River Rd.

Colfax, IL 61728

## National

### **2021 LICA Summer Convention**

**July 27-31, 2021**

Sheraton Niagara Falls: Niagara Falls, NY

# ADVERTISERS INDEX

Advanced Drainage Systems, Inc. ....	7
Agri Drain Corp .....	21
Berns, Clancy & Associates .....	5
BRON .....	21
Brown Bear Corp. ....	18
Cook's AGPS, LLC. ....	14
Dimond Bros. Insurance, LLC. ....	11
Envision Insurance Group, LLC .....	14
Farm and Home Publishers .....	4
Fratco, Inc. ....	23
Hickenbottom, Inc.....	2
Jim Hawk Truck Trailers, Inc. ....	14
Martin Equipment of Illinois, Inc .....	24
Maurer-Stutz, Inc .....	10
Metal Culverts, Inc .....	10
Northland Trenching Equipment, LLC .....	3
Precision Intakes, Ltd .....	21
Prins Insurance, Inc./United Fire Group. ....	24
Prinsco, Inc .....	24
Purple Wave Auction .....	24
Schlatter's, Inc. ....	2
Springfield Plastics, Inc. ....	2
Vermeer Midwest, Inc. ....	10
Xylem, LTD. ....	11

# FEATURED BENEFIT: THE LICA BENEFITS PLATFORM



- Home & Auto Insurance
- Dental Insurance
- Identity Theft Protection
- Legal Protection
- Shopping Discount
- Travel Insurance

## The LICA Benefits Platform

*Not just "one benefit," it's a website with a variety of programs & discounts designed for our members.*

**Go to [LICA.Benefithub.com](https://LICA.Benefithub.com) • Use Referral Code: Q63W9J**

### Identity Theft & Legal Protection



IDShield provides the identity theft protection & identity restoration services you not only need, but deserve.

**Individual: \$8.95/month Family: \$16.95/month**

- Credit Alerts
- Identity Alerts
- Credit Reports
- Full Service Restoration



From minor questions to major issues, you deserve to know your legal rights in any situation.

**LegalShield Plan: \$16.95/month**

- Family & home
- Business
- Financial
- General Questions

### InsurChoice: Home & Auto Insurance

Types of policies available:

- Home & Auto Insurance
- Liability Insurance
- Business Insurance
- Recreational Vehicles
- Flood Insurance
- Antiques

### Travel Insurance



Coverage for:

- Trip cancellation/delay
- Baggage coverage
- Emergency evacuation

### Metlife Take Along Dental

- Dental PPO or DHMO/Managed Care Program
- Choose from thousands of dentists nationwide
- Lower out-of-pocket costs for in-network services



**Go to [LICA.Benefithub.com](https://LICA.Benefithub.com) • Use Referral Code: Q63W9J**



# LICA MISSION

To promote, perpetuate, and improve the proper use of our natural resources for the benefit of all

**BRON**

POWER TO PERFORM

[www.rwfbron.com](http://www.rwfbron.com)

- Five Core Cooling System exceeds cooling for Tier 4 engine standards
- Quieter Reconfigured Cab Interior for Operator comfort
- Standard DL 850 Drainage PLOW increased strength & durability
- LED Light Package for increased visibility for those long days in the field
- Improved swing mechanism for the Onboard Reel for smoother reel speeds & consistent torque
- Optional hydraulic rear step raises out of the way when plowing and lowers when required.
- Standard oscillating track frames.

# BRON 585

## SELF-PROPELLED DRAINAGE PLOW

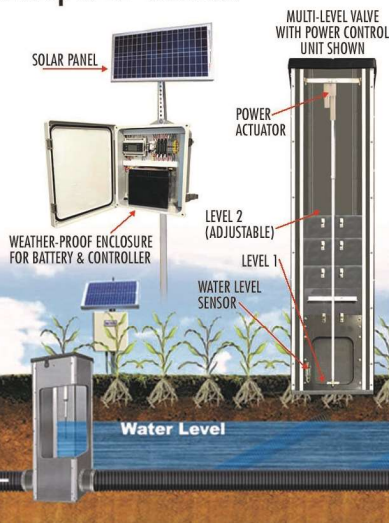
AUTO STEER READY | LOW GROUND PRESSURE  
CAT OR CUMMINS ENGINE



## Agri Drain CORPORATION Smart Drainage System®

Add multi-level, automated, remote-control capabilities to Agri Drain's Inline Water Level Control Structures™ in pipe sizes up to 12"-diameter.

- Manage your system remotely on our Smart Drainage Site.
- Smart Drainage Site dashboard displays battery condition, valve position, water level, and set-points.



US Patent No. 6,715,508 B2  
US Patent No. 6,786,234 B2  
Canadian Patent No. 2,403,456  
Canadian Patent No. 2,466,976

Your Complete Manufacturer and Supplier  
of Products for Water Management  
800.232.4742 ■ [www.agridrain.com](http://www.agridrain.com)

## Precision Intakes Full Line of Surface Water Intakes

- 8" & 10" riser with patented 8" & 10" combination Tees. Also 6" square & round risers with patented reducing Tee.
- Constructed of heavy-weight, high-density polyethylene.
- Parts highly adjustable & interchangeable with others on the market.
- Orifice plate placed at tee level or at ground level.
- Exclusive locking device on each part.
- User Friendly-Priced effectively.
- Adaptor available to repair old metal or broken intakes.



Why inventory 2, when 1 serves both!



"Dealer Inquires Welcome"

## PRECISION INTAKES

Tim Rozendaal — Coretha Rozendaal (800) 932-7611  
2064 Republic Ave West, Monroe IA 50170 (641) 259-2651  
[www.precisionintakes.com](http://www.precisionintakes.com) Fax (641) 259-3218

# SAFETY FEATURE: HEAT RELATED ILLNESSES



## Overview

Heat and humidity can cause several different types of heat-related illnesses such as heat cramps, heat exhaustion and heat stroke. Knowing the signs and symptoms of each type of heat-related illness will help to keep you safe on the job. Normally, the

body has ways of keeping itself cool by allowing heat to escape through the skin and evaporating sweat (perspiration).

However, if the body does not cool down properly or does not cool down enough, a person may suffer a heat-related illness. Anyone is susceptible to a heat-related illness, but the very young and elderly are at the greatest risk. Beyond that, heat-related illnesses can become serious or even deadly if unattended.

## Types of Heat-related Emergencies

These are three types of heat-related emergencies:

- **Heat Cramps** are muscular pains and spasms caused by heavy exertion. This is generally the result of a loss of water and salt through sweating.
- **Heat Exhaustion** is caused by fluid loss and decreased blood flow to your vital organs. This condition can produce flu-like symptoms.
- **Heat Stroke** is the most serious heat-related emergency and occurs when the body's internal cooling system has failed. This is a life-threatening condition requiring immediate and aggressive action.

## The Heat Index

The heat index is a method that combines air temperature and relative humidity to determine an apparent temperature. The human body normally cools itself through perspiration (or sweating), when the water in sweat evaporates and carries heat away from the body.

However, when the relative humidity is high, the evaporation rate of the water is reduced. This means heat is removed from the body at a lower rate, causing it to retain more heat than it would in dry air. The heat index is important to know when doing physical work outdoors, as higher combinations of heat and humidity can make the body more susceptible to heat-related illnesses.

## Preventing Heat Related Emergencies

Know the signs and symptoms of the various types of heat-related illnesses. Take time to monitor yourself and be aware of your co-workers. If working outdoors, avoid long periods of direct sunlight. Use cooling fans to keep air circulating around your body. This helps aid your natural cooling process. Wear lightweight, light-colored and loose-fitting clothes when working in warm and humid environments. Drink primarily non-caffeinated fluids. Caffeine actually works against you because it is a diuretic and will cause you to lose more fluids than you are ingesting. Drinking water or other electrolyte products are best. Never wait until you feel thirsty to start hydrating – you are well on your way to becoming dehydrated when you feel thirsty. It is critical to your overall health to stay properly hydrated, especially when working in hot and humid environments.

## Heat-related Emergency Guide

### Signs & Symptoms

Heat Cramps	Heat Exhaustion	Heat Stroke
<ul style="list-style-type: none"> <li>• Leg cramps</li> <li>• Muscle spasms</li> <li>• Stiff abdomen</li> <li>• Weak, faint or dizzy</li> <li>• Stiff abdomen</li> <li>• Possible nausea</li> <li>• Normal mental status</li> </ul>	<ul style="list-style-type: none"> <li>• Skin is cool and moist</li> <li>• Excessive perspiration</li> <li>• Pupils are dilated (large)</li> <li>• Body temp near normal</li> <li>• Headache</li> <li>• Weak, dizzy or faint</li> <li>• Disorientation</li> <li>• Dark and decreased urine</li> </ul>	<ul style="list-style-type: none"> <li>• Skin is hot and dry</li> <li>• No sweating</li> <li>• Pupils are very small</li> <li>• Victim is confused or unable to think straight</li> <li>• Possible seizures</li> <li>• Body temperature is very high (can be as high as 105° F)</li> </ul>

### Treatment

Heat Cramps	Heat Exhaustion	Heat Stroke
<ul style="list-style-type: none"> <li>• Move to a cooler location</li> <li>• Seek medical help if victim loses consciousness</li> <li>• Drink plenty of fluids</li> </ul>	<ul style="list-style-type: none"> <li>• Get medical attention</li> <li>• Move victim to a cool area</li> <li>• Lay victim on their back and elevate feet 8-10 inches</li> <li>• If conscious, give water every 15 minutes</li> <li>• Cool by fanning or spraying with cool water</li> </ul>	<ul style="list-style-type: none"> <li>• Call 911 immediately</li> <li>• Move victim to a cool area</li> <li>• Loosen clothing</li> <li>• Douse body with water</li> <li>• Apply ice packs or wet clothes to neck, armpits and groin</li> </ul>

**General Guidelines & Reminders:** Do not underestimate the seriousness of heat-related illnesses. Do not give medication to reduce fever and do not allow the victim to drink any caffeinated or alcoholic beverages. In heat-related emergencies, do not overlook other medical conditions that might be complicated by excessive heat. When in doubt, seek medical attention as soon as possible.



**DOING THE**

**RIGHT THING.**



It doesn't come easy for everyone. But at Fratco, it's what has made us a leader in the drainage industry for almost 100 years. From precise manufacturing processes to high-quality products, top-notch customer service and everything in between, we prioritize making things right. Because to us, there's no other option.



**IF IT HAS TO BE RIGHT, IT HAS TO BE FRATCO.**

**FRATCO.COM**

# We've got your back

We understand how hard you work during the tiling season, that's why we are out in the field with you, answering questions, finding solutions and making sure you have pipe when and where you need it. Dig deep, go hard and count on us to have your back.

Find a Sales Rep in your area  
[prinsco.com/agsales](http://prinsco.com/agsales)

800.992.1725 | [prinsco.com](http://prinsco.com) | YouTube

certified WBENC  
WOMAN-BUSINESS-ENTERPRISE

STRONG SERVICE.  
 POWERFUL EQUIPMENT.  
**ENDLESS DEDICATION.**

In addition to selling industry-leading equipment for every customer need, Martin Equipment is a proud member of the Illinois chapter of the Land Improvement Contractors Association. Together, we share dialogues, connections, and education to improve the construction business and environment.

JOHN DEERE | MARTIN  
 Equipment

► Connect and learn more about Martin Equipment at [MEOI.com](http://MEOI.com)

IL: Goodfield, Peru, Springfield, Rock Island and Tolono  
 IA: Cedar Rapids and Dubuque MO: Ashland and Palmyra

# Straight. Simple. Sold.®

## The easiest way to SELL used equipment.

[purplewave.com](http://purplewave.com)

purple wave AUCTION

## EXPERIENCE YOU CAN TRUST.

**75** YEARS ufg INSURANCE

**25** YEARS STATE LICA INSURANCE PROGRAM

**85** YEARS PRINS INSURANCE

**Through our years of service, we've come to understand the importance of hard work, reliability and pride in a job well done.**

We also understand what it means to protect solid reputations like yours.

That's why UFG Insurance offers the Illinois chapter of LICA members a special opportunity to participate in our trusted state LICA insurance program in partnership with Prins Insurance.

We've been around a long time. **Put your trust in our years of experience.**

**Find an agent today at [ufginsurance.com](http://ufginsurance.com).**

© 2020 United Fire & Casualty Company. All rights reserved.