

ILICA



NEWS

Land Improvement Contractors Of America · Illinois Chapter

November - December 2011

Steve Anderson
Chairman of the Board

David Kennedy
President

David Haag
Vice President

Vacant
First Vice President

Janet Burtle-Doubet
Secretary

Bill Dean
Treasurer

Directors

Brian Brooks
Dave Hurst

Steve Anderson
Stuart Anderson

Carol Kiley
Mike Yordy

Eric Layden
John McCoy

Brent Breedlove
Joe Streitmatter

Bill Dean
Jon SeEVERS

John Barttelbort
Doug Nicholson

Tom Beyers
Norm Kocher

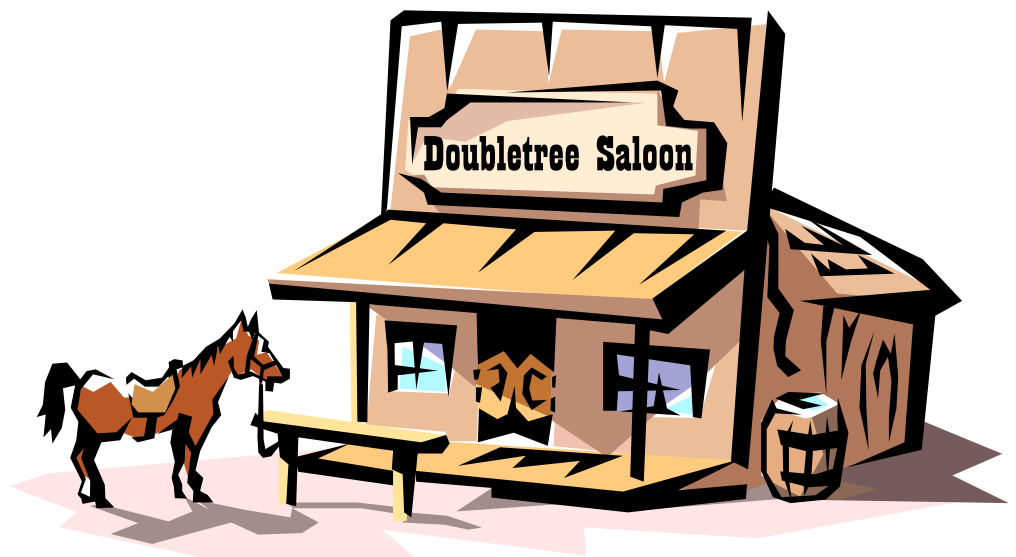
Janet Burtle-Doubet
Executive Director

Upcoming Events:

ILICA Winter Convention
Bloomington - Jan 12 - 14, 2012

Business Mgmt Workshop
Ashland House - Morton, IL
February 14 - 15, 2012

2012 ILICA CONVENTION JANUARY 12 - 14, 2012 DOUBLETREE HOTEL - BLOOMINGTON, IL



Convention Schedule *(page 10)* ~ Convention Registration *(page 11)*

JOIN IN THE FUN OF THURSDAY'S "WILD WEST" THEME

Also Featured Inside:

Proposed By-Laws Change *(page 2)*

2-Stage Ditch Field Day Research At OSU *(page 6)*

Return To: Illinois LICA
P.O. Box 474
Brimfield, IL 61517

ATTENTION! PROPOSED BY-LAWS CHANGE

This is official notification of a proposed by-laws change regarding the ILICA fiscal year, to be voted on at the Annual Members Meeting on January 13, 2012 at 2 pm. Please review these proposed changes and be prepared to vote at January's Member Meeting.

The reason behind this change is to more accurately reflect the annual income and expenditures of the organization and to allow the annual review or audit to be completed in time for review at the January members meeting. The membership year will remain as January through December however, which coincides with National LICA's membership year.

Current by-laws are shown first with **proposed by-laws changes shown in red** immediately following:

Article 1: Section 4: Annual membership dues shall be payable before or during the first month of the fiscal year.

Change to read:

Annual membership dues shall be payable before or during the first month of the **calendar** year.

Article 1: Section 5: The membership of any member whose dues were not paid during the first month of the fiscal year, or during such other time as is established by the Board, shall automatically terminate.



Change to read:

The membership of any member whose dues were not paid during the first month of the **calendar** year, or during such other time as is established by the Board, shall automatically terminate.

Article II: Section 5: Each active member shall be entitled to only one (1) vote upon each matter submitted to a vote at a meeting of the members and shall certify ... at the beginning of each fiscal year a representative and alternate representative.

Change to read:

Each active member shall be entitled to only one (1) vote upon each matter submitted to a vote at a meeting of the members and shall certify ... at the beginning of each **calendar** year a representative and alternate representative.

Article 9: Section 4: The fiscal year of ILICA shall begin on the first day of January of each year and shall end on the thirty-first day of December of that same year.

Change to read:

The fiscal year of ILICA shall begin on the first day of **October** of each year and end on the **thirtieth day of September of the following year.**

ROLAND MACHINERY CO.
Komatsu Distributor

**Time for New Equipment?
Choose Roland**

Reliable Equipment

- Manufactured to withstand any environment

Responsive Service

- Roland provides service on the job site or in their state-of-the-art facilities

KOMATSU

Call the Roland Location nearest you today!

Bolingbrook 630-739-7474	Carterville 618-985-3399	Marengo 815-923-4966
Palmyra 573-769-2056	Springfield 217-789-7711	www.rolandmachinery.com

Central Illinois Ag Since 1898
TAKEUCHI Parts, Sales & Service
Open Monday-Saturday

(800) 334-8942
www.centralilag.com

The ILICA News



Editor / Advertising Manager
Janet Burtle-Doubet

Chairman of the Board
Steve Anderson, Marseilles

President
David Kennedy, Colfax

Vice President
David Haag, Kempton

1st Vice President
Vacant

Secretary
Janet Doubet, Williamsfield

Treasurer
Bill Dean, Mattoon

Educational Advisor
**Professor Richard Cooke
University of Illinois**

The *ILICA News* is the official publication of Illinois Land Improvement Contractors Association, Inc. at 118 E. Knoxville St., Brimfield, IL 61517. (309) 446-3700.

Subscription price is \$25.00 per year, issued bi-monthly: Jan.-Feb.; Mar.-Apr.; May-June; July-Aug. Sept.-Oct.; Nov.-Dec., and includes one annual directory.

FEATURES

- Proposed By-Laws Change 2
- 2-Stage Ditch Field Day Research at OSU 6
- Tentative Convention Schedule 10
- Convention Registration Form 11
- Convention Exhibit Information 12
- Paul The Good Luck Bear 13
- What Is An "ILICA" Contractor? 15
- USDA Celebrates 150 Years 22

COLUMNS

- Board Meeting Notice 3
- Presidents Message 4
- New Members 5
- ILICA Ladies Page 8
- Contractor Classifieds 9
- Legislative Update: LightSquared vs. GPS ... Again 14
- 2011 Committee Members 16
- Member Application 17
- ILICA Benefits 18
- Advertisers Index 19
- Calendar of Events 19
- 2012 Excavator Safety Meeting Schedule 19
- DWM Workshop & TSP Certification 19
- University of IL - Illinois Emerald Ash Borer Quarantine Expanded 20
- Safety Feature: Decorate Your Home *Safety* This Holiday Season 21

The LICA Creed



Land, the foundation of the Nation
 The basis of all wealth
 The heritage of the wise
 The thrifty and prudent
 The poor man's joy and comfort
 The producer of food, fiber and fuel
 The basis of factories
 The foundation of banks

All that man builds is from the land. We often take it for granted or even abuse it; And yet many, unthinkingly and unknowingly pass the land by. What man does with the land will be the deciding factor of his survival.



Convention Meeting Schedule

Final 2011 Board Meeting
January 13, 2012 - 1:30 pm

Annual Member Meeting
January 13, 2012 - 2:00 pm

(see pg. 5 for maps and pg. 10 for committee meeting times)

Doubletree Hotel - Bloomington, IL



PRESIDENT'S MESSAGE

Hello from Colfax Illinois,

At the time of this writing, our work season is progressing very well as I hope everyone else has had the same benefit of good working weather. I dare say at times we were wishing for a rain day to take a break.

Many thanks go to Martin Equipment for sponsoring the Area 3 Member meeting in Bloomington November 10th. We also have upcoming member meetings for Area 6 December 13th in Mattoon hosted by First Mid-Illinois Bank & Trust as well as Area 8 December 15th in Mt. Vernon hosted by Erb Equipment. These meetings are an excellent opportunity to learn about things that affect all of us as contractors as well as to inform potential members of the benefits gained by being members of ILICA.

Upcoming January 12-14 at the Doubletree Hotel in Bloomington is the ILICA Winter Convention. The convention




committee has been hard at work planning another fantastic program for the association. Thursday evening will have a "Wild West Theme", so dig out your cowboy boots and 10 gallon hats and join in the fun.

The month of February brings a Business Management Workshop February 14-15 which should be good for those of us that can get the work done but could use some help in the management side of the business. I want to make special mention of the Drainage Water Management Training and TSP Certification sponsored by the Agricultural Drainage Management Coalition set for February 28-29 in Champaign. This training has a lot of support from the Illinois NRCS office and will enable contractors to be certified as TSPs by USDA. This certification will be more important as we deal with more and more water quality regulations in the future.


As our work season draws down, work smart and be safe.

David Kennedy, President





Agri Drain
CORPORATION
Your Partners in Water Management



We offer America's most complete selection of water management products for wetlands, ponds, lakes, controlled drainage, and subsurface irrigation. Along with tools, survey and safety equipment, and many hard to find items.

PO Box 458 - 1462 340th Street - Adair, IA 50002
 Fax: 1-800-282-3353 - Email: info@agridrain.com
www.agridrain.com

For a FREE catalog or to place an order, call 1-800-232-4742.



Great Lakes Inter Drain

2951 East State Street • Fremont, OH 43420

Your U.S. Distributor for:

Inter-Drain Trenchers and Plows
 New and Used Equipment

Advanced Geo-Positioning Solutions (GPS)
 for Survey and Total Machine Control

AFT Add on Trenchers • Laser Systems
Weichmann Chain, Cutters etc.

"We have the field experience you can depend on after the sale."

AGPS For more information call: **AFT**
ADVANCED GEO-POSITIONING SOLUTIONS, INC.

(800) 767-1904 or (419) 332-1904
Fax: (419) 332-2344

Visit us on the web at: www.greatlakesinter-drain.com
 or email: sales@greatlakesinter-drain.com



NEW MEMBERS

Active Contractors

Tom & Ted Schwartz
 Schwartz Brothers Farms
 38 Irene Street, Streator, IL 61364
 Ph: 815-257-5007

Associates

Eagle Insurance
 Heath Greer
 425 N. New Ballas, Suite 201
 St. Louis, MO 63141
 Ph: 314-983-2340

Dooley Bros.
 Brad Berlett
 1201 S.W. Washington St.
 Peoria, IL 61602
 Ph: 309-674-5101

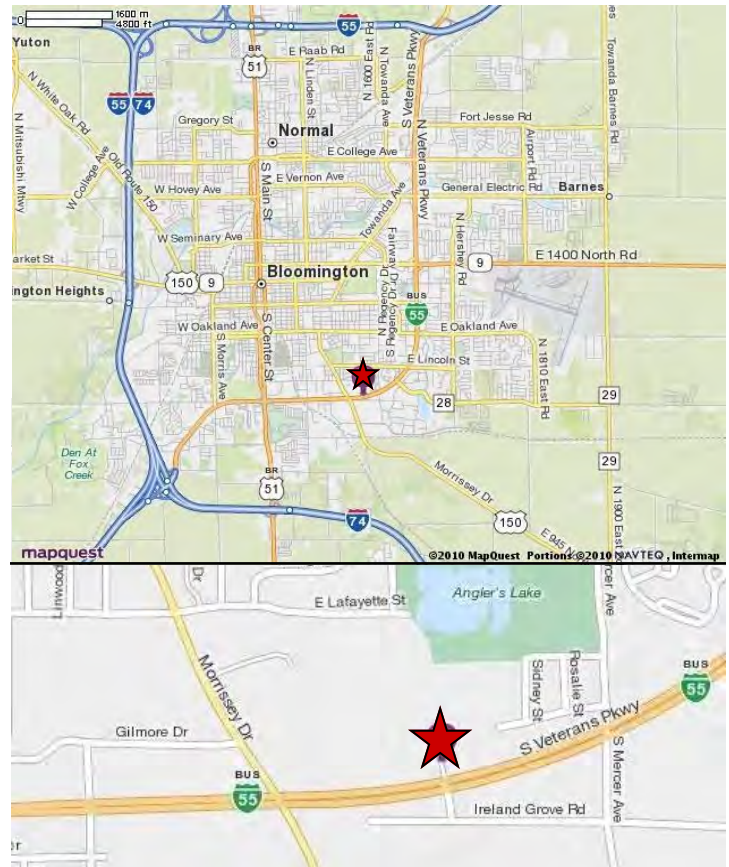
Precision Seeding Technologies, LLC
 Justin Fleck
 15215 Nokomis Rd.
 Nokomis, IL 62075
 Ph: 217-563-2217

CD Getz Drainage Products
 Kevin Phipps
 1214 Raymond Rd.
 Monticello, IL 61656
 Ph: 217-762-9402

United Fire Group
 Betty Hruska
 P.O. Box 73909
 18 2nd Avenue SE
 Cedar Rapids, IA 52407
 Ph: 800-655-7942

Thank You!

January Board & Member Meeting Location Doubletree Hotel - 10 Brickyard Drive - Bloomington



From North: Follow I-55 S toward Bloomington, IL. Take the I-55-BL S exit, **Exit 167** toward Veterans Parkway/Airport. Turn left onto I-55-BL S/N 1700 East Rd/CR-31S. Continue to follow I-55-BL S for approx. 6 miles. Turn right onto Brickyard Drive and the Doubletree is straight ahead, bordered by TGI Fridays and Panera's.

From South: Follow I-55 N toward Bloomington and take the I-55-BL N/Veterans Pkwy/I-74/US-51 exit, **Exit 157A**, toward Decatur/Indianapolis. Merge onto I-55-BL N/Veterans Pkwy via **Exit 157B** on the **LEFT** and follow for approx. 3.8 miles. Turn left onto Brickyard Drive and the Doubletree is straight ahead, bordered by TGI Fridays and Panera's.

STADEL ELECTRONICS LASERS

Authorized Service and Sales for Laserplane-Trimble
 Also servicing most other models

**SOLVING YOUR LASER PROBLEMS FOR
 OVER 30 YEARS**

Call anytime
 815-777-0193

Tom Stadel
 5928 W. Stagecoach Trail
 Galena, IL 61036

2-STAGE DITCH FIELD DAY RESEARCH AT OSU

On October 16, 2011 a conference was held on the campus of Ohio State University in Columbus Ohio concerning the development, design and implementation knowledge gained so far on the idea of the 2-stage drainage ditch theory. Very simply put, a 2-stage ditch is where the low flow channel is sized to where normal flow will keep the channel clean and then for high flows, additional capacity is available by having area alongside below ground level that is normally dry and grassed. This idea came about from the observations of natural ditch formation as seen in areas where runoff flows from tile and surface water exist. The normal flow of water was seen to keep a clean path open after it eroded to a stable condition and then higher flows would cut a floodplain area along side until that too would stabilize at a point where the high flows would be contained.

Ohio State university has been doing studies to determine specifications and design criteria for the building of this type of drainage ditch. The purpose of the conference was to bring into the base of knowledge the thoughts and opinions of several areas of interested parties such as NRCS, The Nature Conservancy, and Soil and Water Conservation Districts. There were representatives from these groups at the conference as well as an ILICA member with a contractor's perspective.

There was a presentation on the theory of the 2-stage ditch which then moved into talks about constructed ditches and changes in sediment and nutrient flows resulting from the changes in shape from normal flat bottom V ditch to the 2-stage. The discussion moved on to the pros and cons of this design highlighting the increase in cost and land usage due to width changes leading the con side of getting them installed. Leading the pro side was a definite decrease in sediment and nutrient outflows as well as increased wildlife habitat. There is also an increase in ditch life as they are in effect more self cleaning than the traditional design.



Source: Steve Anderson



From the viewpoint of a contractor, there is nothing difficult about this design, except maybe selling it to a landowner or customer, as price always weighs in. In many cases they can be cheaper in the long run though, and more conclusive data will become available as more research is done. This will provide the needed data for a process where numbers can be entered and the break even point determined regarding traditional vs. 2-stage or cleaning costs vs. building costs. For us, it would just be more dirt to move in the beginning with fewer return trips for cleaning, as many of us do now. Whether there will be cost share or grants for these type of projects remains to be seen, but interest was good by the attending agencies. However, with the current state of government red ink, it may be more of a private or environmental group thing right now.

In the afternoon, the group was able to go out to the university farm where the second part of construction of a 2-stage ditch was being finished up by Ohio LICA contractor Louis MacFarlane. The previous year saw the initial construction of half of the ditch, and it was being finished this year. It was basically just the leaving of the existing small flow area and cutting down and back of the banks to a point about 1 foot above flow line of normal low water flow. The spoil removed was used to build up along an area of the field that was low on one side, after the topsoil had been pushed back and then spread back over the spoil. Construction was at this point when the group arrived.

In summary, there is nothing difficult about the 2-stage ditch design and, like the projects many of us do now, could easily become second nature to estimate and build. As the drive to improve water quality builds, our contractors may find themselves doing more and more of these, because of the benefits the design does provide. I guess we will just have to grease up our excavators and dozers and go do them.

LICA LADIES RAFFLE DIAMOND NECKLACE



To be raffled off at the 2012 National LICA Winter Convention

14 carat white gold pendant with 3 diamonds on an 18" White Gold

Name _____	L.I.C.A. Diamond Necklace Raffle 4 chances for \$10.00 Drawing will be held at Winter Convention February 2012
Phone # _____	
Address _____	

TICKETS ON SALE NOW: 4 tickets for
To purchase raffle tickets contact Janet or Dee:



Janet Doubet: (309) 446-3700
email: janet@illica.net
or
Dee Liddle: 319-275-4528
email: rdle@butler-bremer.com



Success Begins with the right Ground Work.



First Mid-Illinois Bank & Trust offers the right financial tools to get your land development started. Whether you're looking to farm your ground or create a smart business plan for it, First Mid can help. We offer Ag Services, Business Lending, Insurance, and more!

Let us help with your success... call us today.

- Ag Services Department 1-888-518-7878
- Business Development Department 1-877-561-7107

You can also visit us online to learn more. www.firstmid.com

With 38 locations across Illinois, there's a First Mid near you!



Member FDIC · Equal Opportunity Lender



ILICA LADIES' PAGE

Hello fellow LICA ladies! In this article, I hope to inspire your home décor for the holidays!

Please feel free to contact me (kristinstamps@yahoo.com), with any subjects you may be interested in, or have information on to include on this page. I'd love to include photos of your homes & vacations, favorite reads, landscape ideas...anything goes! ENJOY!

It's almost that time...the holiday's are right around the corner. I searched the web for some unique, affordable ways to spruce up my home. These are a few of my favorite ideas.

SANTA'S HELPER

Most of us have photos of our children sitting on Santa's lap...get them out of the drawer and put them on display! Cover the backing of a frame with holiday themed scrapbooking paper. Use double-stick tape to center your photo in the frame. Your kids will love it.

RETRO REDO

Those beautiful Shiny-Brite ornaments stored in the attic can put some sparkle in your holidays. Swag an evergreen garland across your fireplace or mirror and hang the ornaments right on it.

TABLE TALK

For a table centerpiece that doubles as a conversation starter, go for the unexpected!

Place citrus fruits (oranges, lemons and limes) on a silver charger. Add some springs of evergreen and a few silver ornaments. The contrast of the colors and textures is refreshing.

NATURE WALK

A traditional accessory for the holidays is pinecones. For a fresh take on this holiday staple, grab a can of spray paint. One beautiful color combination is cranberry and silver, but be daring - what about neon green and pink? Pinecones are the perfect, inexpensive touch to your holiday décor.

BRIGHT IDEA

Fancy candles can be pricey, but the ambiance they create is warm and inviting. Create your own! Purchase plain pillar candles. Place a rubber band around the candle for a guide and stick glass headed pins around the base of the candle as a border. It doesn't get much simpler than that!



GET YOUR SWAG ON

Forget the popcorn and cranberry garland this year...go for the playfulness of a candy garland. It's this easy: staple individual wrapped candies end-to-end. Just be sure to leave some candies in a bowl so no one eats your tree bare.

RUNNING IN CIRCLES

Ok ladies, I'd be willing to bet that you all have lace doilies in a linen closet, hope chest or drawer. How about making a pretty table runner from them? Lay out the doilies in a variety of shapes and sizes across the area you want to cover and tie together with white thread. Elegant and beautiful.

LOVE LETTERS

I LOVE words and letters...these two ideas will be on display in my house this Christmas.

Set letter-shaped cookie cutters on a shelf spelling out holiday inspired words.

Use Scrabble tiles and their trays as place markers for a holiday dinner party. Just spell out your guest's name and set the tray at their place setting.



The word for this issue is CREATE. You don't have to be creative to create. Use resources such as your local library and the internet to find ideas that inspire you. You'll be happy you did!

-Kristin Kutemeier



CONTRACTOR CLASSIFIEDS



- ◆ Speicher 3500 Backfiller; good running condition.
- ◆ John Deere backhoe mounted on the back.
- ◆ This machine is a one owner.
- ◆ Anyone interested can either call or email Dave for more information. His contact info is below.

Contact Dave Casey at
 815-970-7358 (cell) or 815-562-7942 (office)
 Email: countrysidedrainage@gmail.com



Retired - Machines For Sale

- ◆ 1995 John Deere Dozer - 750C
- ◆ 1987 CAT Crawler Loader w/4 in 1 Bucket & 3-Shank Ripper and Cab

Contact Gene Royer at
 309-289-4141 or 309-368-0666

For Sale

1978 Steenbergen Hollandrain FFS

- ◆ Has not been used in approximately 5 years
- ◆ As Is Condition

Call 309-879-2679 for more information

LICA RECOMMENDED INSURANCE PROGRAM

Continental Western Group®



HOW DOES YOUR POLICY STACK UP?



- POLICIES DESIGNED SPECIFICALLY FOR DIRT MOVERS

- A SAFETY GROUP PROGRAM, OVER \$1,000,000 PAID BACK TO LICA CONTRACTORS IN THE FORM OF A DIVIDEND



FOR MORE INFORMATION, CONTACT PRINS INSURANCE BY CALLING 1-800-831-8545 OR EMAILING BRUCE MOSIER AT BMOSIER@PRINSINS.COM

TENTATIVE ILICA CONVENTION SCHEDULE

Wednesday, January 11th

4 - 6 pm Exhibitor Set up
 5:15 pm Budget Committee



Thursday, January 12th

8 pm Registration/Breakfast
 8:30 am Exhibits Open (Open through 7:30 pm)
 9 - 10:15 am **Education:** Fluid Selection & Application/
 Lubrication Fundamentals: Joe Giovinazzo, President
 - Petrocon Corp
 10:30 - 11:45 am **Education:** JULIE Update; Dale Kuhn &
 Gina Meehan, Ameren Gas Compliance Division
10:30 am Ladies: Ladies Hospitality Room Open
 through 4:00 pm - Refreshments and activities
 12 Noon Lunch
 12:30 pm Agency Reports
 1:15 - 2:15 pm **Education:** ILICA Leadership 101 - Panel
 Discussion - Steve Anderson, Moderator
 2 pm **Ladies:** Cake Decoration Presentation
 2:30 - 3:30 pm **Education:** Balancing Your Time - Panel
 Discussion - Brent Breedlove, Moderator
 4:15 - 4:30 pm - **Education:** ADMC Update on DWM & CIG
 Grants - Steve Baker

4 pm Awards Committee
 4 pm Nomination Committee
 5 pm Hospitality Hour in Ballroom

5:15 PM Exhibitor Group Photo
6 pm Convention Kick Off Dinner
 6:15 pm Convention Chair Welcome
7:45 pm LIVE Auction
 9 pm - 1 am Associate Hospitality Rooms Open



Friday, January 13th

7:30 am Devotions, Children's Bell Choir Program
 8 - 9 am Breakfast
 8 to 11 Registration
 8 am - 1 pm Exhibits Open

9 am **Ladies:** Outing - Board Bus for Clinton
 C.H. Moore Homestead Tour & Gift Shop; Lunch at
 "The Loft" Café; Shopping at Antique & Consignment
 Shop; Mission Consignment, The Country Church,
 Country Junction & Clinton Antique Mall

9:15 am **Education:** Estimating & Machine Costing -
 Dustin Courson, CPA: Martin Equipment & Clay
 Dean, First Mid-Illinois Bank & Trust

10:30 am **Education:** Dirt Moving Productivity
 12 Noon Lunch
 12:30 pm Partner Reports

1:30 pm Final Board of Directors Meeting
 1:30 pm Associates Committee Meeting

2 pm Exhibit tear down
 2 pm Members meeting & Election of Officers
 5 pm Hospitality Hour
 6 pm Dinner

**7 pm Children's Program - Chaperoned Popcorn
 & Movie night**

7:30 pm "Mystery Dinner" Entertainment
 9 pm - 1 am Associate Hospitality Rooms Open



Saturday, January 14th

7:30 am Devotions, Teen Challenge Presentation
 8 am Door Prize Breakfast
 9:30 am Leave for backhoe Rodeo at Birkey's
 10 am: Discount tickets for Children's Discovery
 Zone / Upper Limits Rock Climbing Gym /
 Other downtown attractions & places for lunch.
 10 am **Ladies:** Make & Take Activity: Landscaping
 Rock Stenciling
 12 Noon Lunch sponsored at Birkeys
 2 pm Return to hotel from Birkey's
 5 pm Hospitality Hour
 5:45 pm Photos: Officers, Directors & Members
 6 pm Awards Banquet
 7:30 pm Awards Ceremony
 8:30 pm Presidents Hospitality Room Open





Illinois LICA Convention & Members Meeting - January 12 - 14, 2012

Registration Form

Illinois LICA is taking a trip back to the "Wild, Wild West" this January at the Doubletree Hotel in Bloomington. Wear your favorite cowboy hat and boots or perhaps an Indian or Southwestern costume is more your style, but please show up on Thursday evening prepared for this year's Western Theme kick off Early Bird dinner in the exhibit hall. No Real Weapons Please!!!



Please contact the Doubletree Hotel reservations at **(309) 664-6446** or call Janet at the ILICA office as soon as possible to make room reservations. Mention you are with ILICA to be placed in our room block. Our guaranteed room rate is \$90.



Return completed Registration form to: **Illinois LICA ° P.O. Box 474 ° Brimfield, IL 61517** Or fax to: **(309) 446-3744**

Pre-Registration for the ILICA Convention – January 12 – 14, 2012

Attendee Name: _____ Spouse's Name: _____
 Address: _____ City: _____ State: _____
 Company Name: _____
 Child(ren) Name(s): _____, _____, _____

I (we) will participate in the Birkey's Backhoe Rodeo
(Saturday, following Door Prize Breakfast)
 # _____ x \$20 per competitor
(Add to total enclosed)

Price of registration includes all meals & activities listed in program, unless otherwise noted.
 Total Enclosed: \$ _____ *(Make check payable to ILICA)*

Educational Sessions • Exhibits • Awards Banquet • Door Prizes • Auction Ladies Program • Children's Program • Notepad Raffle • Backhoe Rodeo

Pre-Registration fee:

Must be received in our office by January 2, 2012



	Full Participation (3 days)	One Day Participation
Individual	\$165	Individual \$ 75
Couple	\$265	Couple \$120
Child (under 12)	\$ 75	Child (under 12) \$ 45

(Indicate which day (s) you plan to attend)
 Thursday Friday Saturday

Cost of Registration after January 2, 2012

Full Participation (3 days)

Individual	\$200
Couple	\$300
Child (under 12)	\$100



One Day Participation



Individual	\$100
Couple	\$150
Child (under 12)	\$ 60

(Indicate which day (s) you plan to attend)
 Thursday Friday Saturday

Awards Banquet Meal Selection - Saturday, January 14th



Sirloin Filet # _____

Chicken Blackhawk # _____



(Swiss cheese & smoked ham in sautéed & baked chicken breast)

Children's Program

Friday Evening: 7 pm- Movie & Popcorn Night
(Chaperoned, at Hotel during evening entertainment)

Saturday - Discount Tickets to Area attractions



Our children will attend: _____ # in party



Ladies Program - Friday, January 13th - 9 am

C.H. Moore Homestead Tour & Gift Shop

Lunch at "The Loft" Café

Shopping at Mission Consignment, The Country Church, Country Junction & the Clinton Antique Mall



I / we will attend: _____ # in party



CONVENTION EXHIBIT INFORMATION

The ILICA winter convention and trade show returns to the Doubletree Hotel in Bloomington, utilizing the usual exhibit layout around the perimeter of the ballroom as shown below. There are just a few tweaks from suggestions received in last years' exit surveys, such as keeping the coffee service in the exhibit hall and not involving the Bloomington fire department in the trade show set up.

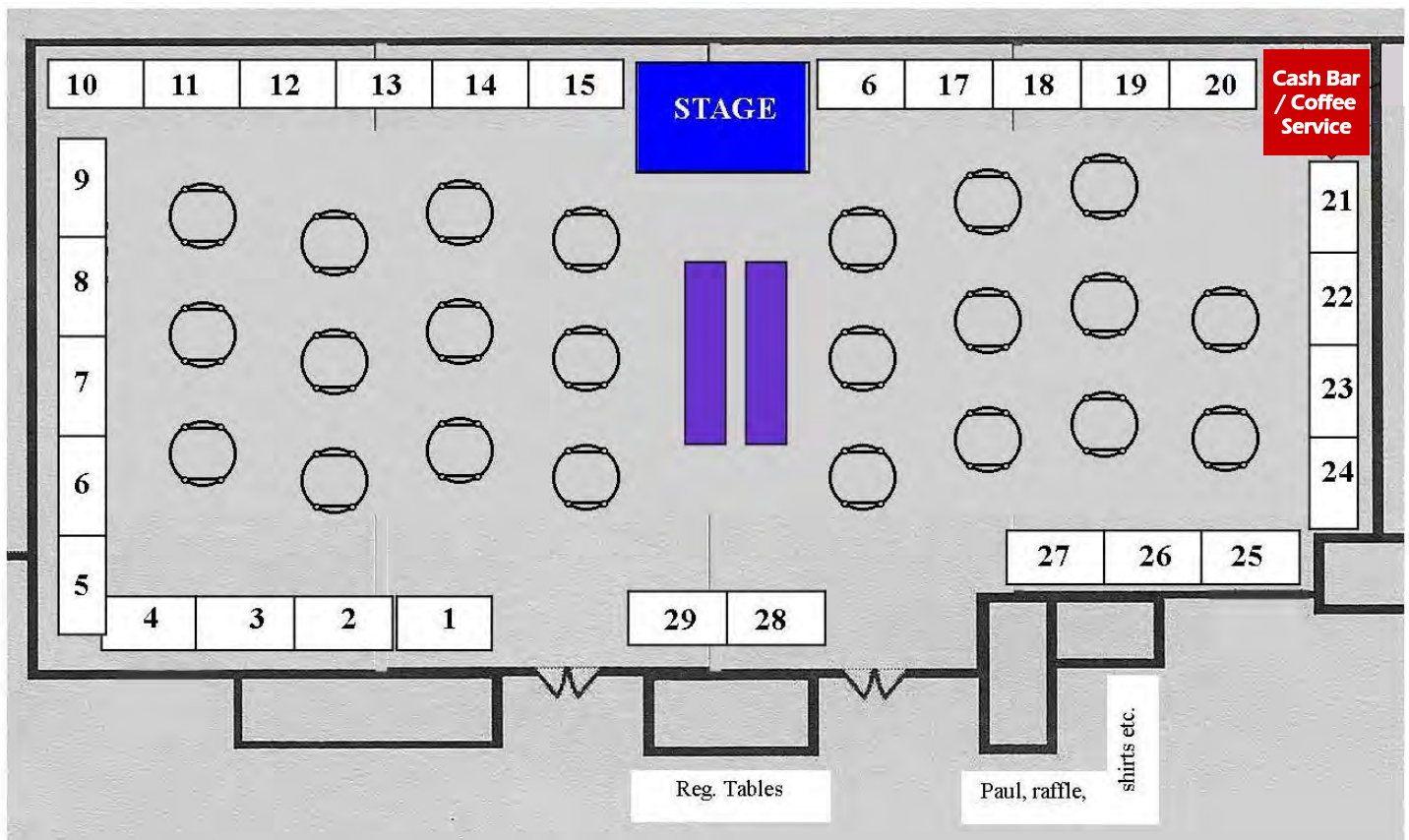
Our ballrooms have been reserved beginning at 5 pm Wednesday evening to provide an early set up time for our exhibitors. The trade show begins at 8:30 Thursday

morning and remains open all day until the evening auction begins and then again Friday morning, running through lunch.

The tentative schedule is printed on page 10 of this publication and the registration form can be found on page 11. Exhibit and sponsorship packets will be sent to all ILICA associates in early December and will be available soon on our website, www.ilica.net. Please get our dates on your calendars though and contact the ILICA office if you have any questions about this year's trade show. We're looking forward to another fun, informative and productive winter convention!

CONVENTION THEME

It is well documented that our associates are some of our **BEST** "best dressed" attendees on opening night. It will be difficult to beat last year's participation but we encourage everyone to try! This year, the committee has selected a **"Wild, Wild West"** theme so break out your cowboy hat and boots, brush up on your John Wayne lines and saddle up for a great evening! And where would cowboys be without Indians, Saloon girls, chuck wagon "cookies", sheriffs and outlaws! Take your pick but **please** help us make this year's convention kick off as much fun as last year.





PAUL THE GOOD LUCK BEAR

Paul the Good Luck Bear, pictured here in his formal attire, at the 50th anniversary convention in 2007, has been a part of the ILICA convention longer than the current executive director. At every convention, he is front and center at the auction (along with the coveted backhoe that travels back and forth between Iowa and Illinois) with the proceeds collected to “purchase” Paul going toward membership drive expenses.

But with ILICA’s many new members, the convention committee realized that a lot of people may not even know the story of Paul. So, the editor did some research, and it turns out that Paul joined the auction like every other item, donated by a supportive member, although this one had a talent for chain saw carving. Paul was hand made, which just gave him that much more character. Another supportive ILICA member purchased Paul and decided to bring him back to auction the following year, since Paul had brought him such good luck; and so the tradition began. Along the way, the membership decided to earmark Paul’s proceeds for membership drive expenses, and then things got crazy!

Over the past several years the membership committee solicits donations for Paul most of the day on Thursday, right up until Paul is auctioned off as the final item. The names of all



those who have donated are read and recognized as the auction concludes. No amounts are mentioned and every single dollar is appreciated. There are members who prefer to support Paul over other sponsorship opportunities, understanding that member growth is the key to ILICA’s success, but no one should feel obliged to contribute.

Paul has traveled from home to home though the years but these days, no one really “owns” Paul the Good Luck Bear. Paul lives at the ILICA office after a rather unfortunate incident during his last stay at a members home. It turns out Paul doesn’t like to be stuffed away in a closet. The “good luck” mojo goes bad ... just ask Bill Dean. Now, Paul has a wonderful perch alongside remote control construction equipment where he watches over all the activities at the office. He’s happy there. He gets to travel once a year to the ILICA convention, where, for a brief moment in time, he becomes the center of attention. And he has certainly brought good luck to ILICA ... but then, he’s not stuffed away in a closet.

Do You Want To Support ILICA’s Membership Drives?

- If you do, please see Janet Doubet, Wayne Litwiller, or Norm Kocher at this year’s convention and ask about donating to “Paul”.
- ALL donations for Paul the Good Luck Bear will be used to offset membership drive expenses like travel & mailing supplies.
- Supporters will be announced at the conclusion of Thursday night’s auction, but no dollar amounts will be mentioned.
- No one is obligated to donate to Paul but each and every dollar is appreciated.

WATER MANAGEMENT SOLUTIONS

PRINSCO
ENGINEERED WITH INTEGRITY™

For over 30 years, Prinsco has been developing more than just plastic pipe. We’ve been developing a reputation that’s founded on one simple thing: **INTEGRITY**. It’s how we design our products, it’s how we treat our customers, it’s how we do business.

Look for our **GOLD STRIPE** of quality to ensure your pipe has been engineered with integrity.

800.992.1725 | WWW.PRINSCO.COM

CORPORATE HEADQUARTERS: 1717 16th Street NE | 3rd Floor | Willmar, MN 56201
LOCATIONS: Fairfax, MN | Prinsburg, MN | Rose Creek, MN | Chatsworth, IL | Fort Dodge, IA | Jesup, IA | Bethany, MO | Fresno, CA



LIGHTSQUARED VS. GPS – AGAIN

Source: John Peterson, *LICA Director of Government Relations*



Since you folks alerted me to the GPS concerns that bringing high-speed internet to rural America by a company called LightSquared might cause, and how its technology could disrupt GPS systems throughout the US, I have tried to follow the issue and report when there was something to say. Recently I ran across another article that caught my eye entitled *LightSquared, GPS on collision course* by C. Boyden Gray (1). Gray served as White House counsel in the George H.W. Bush administration, and given the title of the article I thought Gray probably was on the GPS side of things. I was quite surprised at the article after reading it. I won't repeat it all, but will use much of what Gray wrote. I don't know if Gray is now a lobbyist for helping spread high-speed internet technology. I will check.

“Good fences make good neighbors. No matter how well you get along with the neighbor next door, it's good to know where his property ends, and yours begins. And good fences are essential for more than just real estate; other areas of the law depend on laying down clear, enforceable boundaries between one company's intangible “property line” and another's. Perhaps the best example of this is the communications spectrum. For more than 80 years, the Federal Communications Commission (FCC), and its predecessor the Federal Radio Commission, has fixed the boundaries between users' respective shares of the spectrum, and policed the spectrum to ensure that the users have obeyed those “fences.”

Spectrum allocation is by and large a low-key issue. But in recent months, one dispute among users of adjacent spectrum space has become particularly heated. LightSquared Inc. proposes to build a telecommunications network combining both satellites and traditional land-based communications towers. LightSquared would help to bring broadband Internet access to millions of rural Americans, an important service for heartland residents who find themselves on the wrong side of a persistent “digital divide” between broadband “haves” and “have-nots.” And it would help close the gap between the US, which ranks 15th in broadband adoption, and more technologically developed nations.

The FCC approved LightSquared's network in 2005, and until recently the proposed network was not controversial. But in late 2010, the US GPS Industry Council (USGIC—an advocacy group promoting the satellite location technology that now serves countless cars, phones, and other devices, including those used by most LICA Contractors) abruptly began to assert that LightSquared's network would “interfere” with GPS communications, which occupy the adjacent spectrum space.

As a matter of regulatory procedure, USGIC's belated complaints were dubious: The GPS has known about

LightSquared's proposal since 2001, and the FCC approved it in 2005. Nevertheless, it attracted virtually no criticism regarding GPS; only one company briefly raised the issue in 2001, but it ceased to press the point long before the FCC's 2005 approval order. But perhaps, even more important, the GPS industry's public campaign against LightSquared relies upon a fundamental misperception: To the extent that LightSquared's and GPS activities would be incompatible, it is not because of malfeasance on LightSquared's part. Quite the contrary: GPS communications spill over into LightSquared's share of the spectrum (I certainly did not know that. That I will check.).

Until now this has not been a problem because LightSquared has not actively used its spectrum. Only when it became evident that LightSquared would actually make its proposal a reality, and after the company had invested \$1 billion, did LightSquared face a public campaign, before both the FCC and the court of public opinion.

In this controversy, some have argued that LightSquared improperly lobbied the White House to promote its cause. But Gray's focus is not on that dispute, but to focus on the regulatory issues. And in that respect he says there is no serious dispute: Critics raised no concerns regarding LightSquared's effects on GPS for nearly a decade. Only after LightSquared received FCC approval, and invested vast sums of capital in the project, did GPS begin to complain, and about problems of GPS's own making.

LightSquared has offered to voluntarily shoulder much of the burden for identifying the full scope of GPS's technological problem. But the FCC itself warned that accountability rests “not only on new entrant's but on incumbent users,” namely GPS, “who must use receivers that reasonably discriminate against reception of signals outside their allocated spectrum.”

In other words, GPS bears more than a little responsibility to contribute to a solution for a problem it helped create. It is unfair to ignore the clear public record here going back to 2001, along with the reasonable investment expectation based on that record. To do so would discourage similar future investment in new telecommunications technology, just when we need more innovation, not less.”

Well, that is certainly a side of the story I had not heard. How about you?

Reference. 1. Gray, C. Boyden, *LightSquared, GPS on collision*



WHAT IS AN ILICA CONTRACTOR?

The ILICA contractor membership has more than doubled in the past five years although we are blessed to have many of the long-term members still actively involved as well. This provides the opportunity for the newer active members to learn from the “not so new” but, where does that leave the members who haven’t become active ... yet?

The ILICA Articles of Incorporation clearly state the purpose of the organization but, because there are so many new members who probably haven’t spent much time in the back of the directory, it was suggested that the editor put together a condensed version of ILICA’s purpose in the next newsletter. Having taken that request to heart, here’s an ILICA contractor in a nutshell.

ILICA was organized “To be and serve as an organization or society instituted for the purpose of mutual help, not conducted for profit”, comprised of those engaged in the business of land improvement and other contracting, organized to promote conservation and rehabilitation of soil, land, natural resources, and water conservation and to control or prevent soil erosion, depletion or misuse of natural

resources and soil and water pollution and contamination and to encourage, urge and require that it’s members carry on “their work in a skillful, sound and efficient manner” and accomplish the purposes set forth with high and acceptable standards that reflect credit on the corporation, its members and land improvement contractors in general”. Further, the organization is to conduct research and inquiry into fields and areas where the results may promote this same conservation and then disseminate that information to it’s members and others.

In general, ILICA contractors are expected to subscribe to the highest level of professionalism in their craft and share the knowledge gathered from years of experience with other members who may be closer to the beginning of their own career journey. The organization continues to offer educational opportunities toward that end, but nearly every active contractor in ILICA will tell you that the most beneficial information a contractor can get are the words of wisdom from some of these “seasoned” guys who have been through many of the same struggles ... and are willing to share their experience.



Since 1923 supplying quality drainage products with service second to no one...

Why Fratco Pipe and Fittings?

Quality and Service. We are 100% committed to offering the best HDPE corrugated pipe and fittings to the market, with a friendly and knowledgeable staff that is dedicated to providing unparalleled flexibility and delivery, ensuring prompt and accurate order filling from our fully stocked yards.



Experience the Fratco Difference....



ST. ANNE OFFICE
460 SOUTH ELM ST.
ST. ANNE, IL
60964
(815) 427-8144



www.fratco.com
or Toll Free
(800) 854-7120
(800) 475-8144



FRANCESVILLE OFFICE
4331 SOUTH 1450 WEST
FRANCESVILLE, IN
47946
(219) 567-9133

Members of:



2011 Committees

Associate

Corey Getz - ADS / Hancor, Chair
 Mark Baker - Springfield Plastics
 Mike Bierbaum - CPI Supply
 Dave Mosier - ADS / Hancor
 Chad Nicholson - Fratco, Inc.
 John Pogge - Prinsco, Inc.

Auditing

Bill Dean, Chair
 Steve Anderson
 Ron Masching

Awards

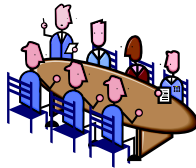
Bill & Bev Dean, Chair
 Brent & Tracy Breedlove
 Bill & Janet Doubet

Budget

David Haag, Chair
 Dan Day
 Bill Dean

By-Laws

Stuart Anderson, Chair
 Bill Doubet
 Dave Hurst
 Stan SeEVERS
 Joe Streitmatter



Certification

Dave Hurst, Chair
 Wayne Litwiller
 Ron Masching
 Prof. Kent Mitchell, U of I
 Stan SeEVERS

Certification Board

Dave Hurst, Chair
 Forrest Davis
 Dave Kennedy
 Wayne Litwiller
 Ron Masching

Convention

Kristin Kutemeier, Chair
 Brent & Tracy Breedlove
 Bill & Bev Dean
 Greg & Jennifer Furkin
 David & Lori Kennedy
 Mike & Holly Yordy

Devotions

Jean Davis, Chair
 Steve Anderson
 Norm & Coretha Rozendaal

Education

Brent Breedlove, Chair
 Richard Cooke: Univ. of Illinois

Education (cont.)

J.D. Laster
 Eric Layden
 Mike Yordy

Executive Committee

David Kennedy, Chair
 Steve Anderson
 Bill Dean
 Janet Burtle-Doubet
 David Haag

Golf Outing

Wayne Litwiller, Chair
 Jerry Biuso
 Forrest Davis
 Norm Kocher



Headquarters

Dan Day, Chair
 Steve Anderson
 Mark Baker
 David Haag
 Ron Masching

Industrial & Business Relations

Bill Doubet, Chair
 Charlie Adams
 Dan Day
 Bill Dean
 Wayne Litwiller

Insurance

Vacant, Chair
 Charlie Adams
 Dan Day
 Stan SeEVERS

Ladies

Lori Kennedy, Chair
 Judy Beyers
 Bev Dean
 Cathy Masching
 Jackie Streitmatter

Legislative

Steve Anderson, Chair
 Lee Bunting
 Bill Doubet
 Dave Hurst
 Carol Kiley
 Norm Kocher
 Joe Streitmatter
 Mike Yordy



Long Term Planning

Steve Anderson, Chair
 Stuart Anderson
 Dan Day

Long Term Planning (cont.)

Bill Doubet
 Ron Masching

Membership

Wayne Litwiller, Co-Chair
 Norm Kocher, Co-Chair
 Steve Anderson
 Mark Baker
 Tom Beyers
 Brent Breedlove
 Brian Brooks
 Forrest Davis
 Dan Day
 Scott Day
 Bill Dean
 Bill Doubet
 Eugene Glueck
 Ron Masching
 Larry Rhodenbaugh

Nomination

Stan SeEVERS, Chair
 Dan Day
 Joe Streitmatter

On-Site Waste

Wayne Litwiller, Chair
 John McCoy
 Larry Rhodenbaugh
 Jon SeEVERS
 Jason Winings

Picnic

Steve Anderson

Publicity

Bill Doubet, Chair
 Mark Baker
 Wayne Litwiller

Safety

Doug Nicholson, Chair
 Brent Breedlove
 Dave Hurst
 Dave Kennedy
 Carol Kiley
 John McCoy
 Jason Winings

Show & Other Income

Dave Kennedy, Co-Chair
 Jon SeEVERS, Co-Chair
 Brent Breedlove
 Brian Brooks
 Joe Krupps
 Wayne Litwiller
 John McCoy
 Joe Streitmatter





MEMBERSHIP APPLICATION

Illinois Land Improvement Contractors Association, Inc.

118 E. Knoxville · PO Box 474 · Brimfield, IL 61517
 (309) 446-3700 · Fax: (309) 446-3744 · Email: janet@illica.net

_____ hereby makes application for Active Membership in the **ILLINOIS LAND IMPROVEMENT CONTRACTORS ASSOCIATION, INC.**, (ILICA) and enclose \$_____ as my annual membership dues for the year _____. One dollar (\$1.00), which is included in the \$295 dues, is for a one (1) year subscription to the “ILICA News”, a bi-monthly newsletter.

Send completed application with payment (make check payable to ILICA) to the corporate address above or give to any ILICA member to forward.

Name: _____ DOB:(*required for active members only*)_____

Firm Name: _____

Spouse: _____ County: _____

Address: _____

City: _____ State: _____ Zip: _____

Email : _____ Sponsor: _____

Phone: _____ Cell Phone: _____ Fax: _____

Check All Services Provided

- | | |
|---------------------------------|---|
| CUI - Cable/Utility Inst. | OSW—On Site Waste Treatment |
| DB - Directional Boring | PD - Ponds / Dams |
| DI - Drainage/Irrigation | RBD - Road Boring/Drainage |
| DWM - Drainage Water Mgmt | R - Reclamation |
| EC - Erosion Control | SA - Dealer/Service Co./Government Agency/
Consultant/Insurance Agency |
| EMC - Earthmoving/Land Clearing | SP - Site Prep |
| EXG - Excavating/Grading | SWU - Sewer/Water/Underground Utilities |
| GR - Gravel/ Rock Production | TH - Trucking / Hauling |
| LL - Land Leveling | TW - Terraces / Waterways |
| LS - Landscaping | WM - Water Management |
| ODW - Open Ditch Leveling | Other: _____ |

Active Contractor Membership - \$295 (*One hundred seventy dollars (\$170) for Illinois Membership plus One hundred twenty five dollars (\$125) for National Membership*)

(Active members are individuals engaged in the business of entering into contracts for performing work that will result in soil, land, natural resource conservation or rehabilitation, water conservation, control and prevention of soil erosion, depletion and misuse of natural resources and soil and water pollution and contamination.)

Associate Membership - \$295 (Associate members are those businesses that manufacture or sell equipment, materials or services used by active members)

Affiliate Membership - \$85 (Affiliate members are individuals employed by an active member in the business that makes the active member eligible for membership)

ILLINOIS LICA BENEFITS



Education

Illinois LICA provides many educational opportunities throughout the year with sessions at our annual convention, at Area member meetings and at workshops each year. Almost every Area is hosting meetings this year.

Illinois LICA state convention, which includes exhibits by our associate members, is scheduled each January in various locations around the state. First year contractor members will receive 1 free full participation registration to the convention, which includes all meals during the 3 day event. Several educational sessions are scheduled during the convention along with many social and networking opportunities.



Workshops are offered multiple times per year. In 2011 there were three scheduled; A 4 day safety workshop in February, the University of Illinois Erosion Control workshop in March and a drainage and drainage water management workshop set for August. OSHA 10 Hour certification will be offered every other year and Certified Flagger training is available as often as demand warrants.



Continental Western Group/LICA Insurance Program

Continental Western Group has designed a comprehensive LICA Insurance program, blending Property, Inland Marine, Crime, General Liability & Business Auto coverage into a simple and convenient policy. It offers standard coverage for many items specific to the Land Improvement industry, providing outstanding coverage at a very competitive rate, even before the Safety Group Dividend potential return. Although the dividend is not guaranteed, the return rate has been between 3.5% and 12% most years.



ILICA News & Annual Directory

The ILICA News is a bi-monthly publication distributed to all Illinois LICA members that contains 24 pages of information relative to the land improvement industry as well as notice of activities and upcoming events. The annual directory of members is published each spring and distributed to all ILICA members and many IEPA, NRCS and SWCD offices throughout Illinois.



Legislative Representation

ILICA has an active Legislative Committee that monitors legislation that impacts small business in Illinois. They participate in the Agricultural Legislative Roundtable caucus and many other events then disseminate that information to ILICA members. They are currently working on a system to streamline this process for more effective communication.

ILICA not only maintains its own relationship with legislative contacts, Illinois along with other state chapters have a combined voice in Washington DC through national LICA. Each year, representation from ILICA travels to Washington DC along with several other chapters, to lobby their congressmen and women regarding legislation that affects land improvement contractors.



National Benefits

A LICA membership entitles contractors to many benefits that can give their company a competitive edge. Listed below are just a few:

- National LICA Contractor Magazine
- LICA Contractor Safety Management Plan
- National Equipment Register
- Petrocon Commodities Discount Program
- Beyond Perks Program
- National LICA Winter Convention and Summer Meeting
- National Scholarship Program
- Land & Water Magazine
- LICA Sponsored Limited Medical Program

CALENDAR OF EVENTS

Illinois

Area 6 Member Meeting

First Mid-Illinois Bank & Trust, Mattoon, IL

IDOT Regulations for Contractors

December 13, 2011

Dinner at 6 pm - Presentation at 7:15 pm

Area 8 Member Meeting

Erb Equipment Company, Mt. Vernon, IL

IDOT Regulations for Contractors

December 15, 2011

Dinner at 6 pm - Presentation at 7:15 pm

ILICA Winter Convention & Member Meeting

DoubleTree Hotel - Bloomington, IL

January 12 - 14, 2012

Winter Business Management Workshop

Ashland House - Morton, IL

February 14 - 15, 2012

National

LICA Winter Convention

DoubleTree Hotel - San Diego, California

February 7 - 11, 2012

2012 EXCAVATOR SAFETY MEETINGS

The tentative schedule for the J.U.L.I.E. / Illinois Pipeline Assoc. Contractor Safety Breakfast Meetings for January is below. Registration is at 7:30 am, buffet breakfast at 8 am and safety presentation at 8:30 am. Please refer to their websites for exact locations and other details; www.illinois1call.com or www.ilnipa.com.

- Tuesday - January 10, 2012 Springfield, IL
- Wednesday - January 11, 2012 Quincy, IL
- Thursday - January 12, 2012 Urbana, IL
- Friday - January 13, 2012 Decatur, IL
- Tuesday - January 17, 2012 Bloomington, IL
- Wednesday - January 18, 2012 Peoria, IL
- Thursday - January 19, 2012 Moline, IL
- Friday - January 20, 2012 Rock Falls, IL
- Tuesday - January 24, 2012 Joliet, IL
- Wednesday - January 25, 2012 Kankakee, IL
- Thursday - January 26, 2012 LaSalle, IL

ADVERTISERS INDEX

Agri Drain Corp	4
Central Illinois Ag	2
Continental Western Group/Heiser Ins.	22
First Mid-Illinois Bank & Trust	7
Fratco, Inc.	15
Great Lakes InterDrain	4
Martin Equipment of Illinois	24
Midwest Auger Aerator.	24
Precision Intakes Ltd	24
Prins Insurance Inc.	9
Prinsco	13
Roland Machinery Co.	2
RWF Bron	23
Springfield Plastics Inc.	24
Stadel Electronics	5
Wisconsin Plastic Drain Tile.	23

ADMC Agricultural Drainage Management Coalition

will be providing a

Drainage Water Management Training
Workshop & TSP Certification

February 28 –29, 2012

Holiday Inn - Urbana, IL

*For Hotel reservations call 217.328.7900
(block rate available)*

Please call Jeanne at 507-451-0073 to
register for the workshop.

www.admcoalition.com



UNIVERSITY OF ILLINOIS
EXTENSION

ILLINOIS EMERALD ASH BORER QUARANTINE EXPANDED



The Illinois Department of Agriculture (IDOA) has added all of 14 counties and part of two others to its emerald ash borer (EAB) quarantine.

The expansion became necessary after the tree-killing beetle was detected this summer in four new counties. Traps placed throughout the state to track the spread of the beetle captured its presence in DeWitt, Marion and Stark counties. Alert IDOA staff spotted the fourth infestation, in Effingham County, while traveling to Marion County to investigate the discovery there.

"This is the eighth and largest amendment to the original EAB quarantine that was enacted after the beetle was discovered here in 2006," Warren Goetsch, IDOA bureau chief of Environmental Programs, said. "The boundary expansion is so significant because two of the detections this summer were in southern Illinois nearly 125 miles from the closest, previously-known infestations." In addition to DeWitt, Marion, Stark and Effingham, the counties added to the quarantine in their entirety are Clark, Coles, Cumberland, Douglas, Edgar, Fayette, Macon, Moultrie, Piatt and Shelby.

Portions of Bureau and Marshall counties not previously included in the quarantine also were added, bringing the number of impacted counties in northern, central and south-central Illinois to 39. The quarantine is intended to prevent the artificial spread of the beetle through the movement of infested wood and nursery stock. Specifically, it prohibits the removal of the following items from quarantined areas:

- The emerald ash borer in any living stage of development.
- Ash trees of any size.
- Ash limbs and branches.
- Any cut, non-coniferous firewood.
- Bark from ash trees and wood chips larger than one inch from ash trees.
- Ash logs and lumber with either the bark or the outer one-inch of sapwood, or both, attached.
- Any item made from or containing the wood of the ash tree that is capable of spreading the emerald ash borer.
- Any other article, product or means of conveyance determined by the IDOA to present a risk of spreading the beetle infestation.



Note the "D" shaped hole typical with EAB infestation

The emerald ash borer is a small, metallic-green beetle native to Asia. It does not pose any direct risk to public health, but does threaten the ash tree population. Its larvae burrow into the bark of ash trees, causing the trees to starve and eventually die. Since the beetle was first confirmed in the Midwest in the summer of 2002, it has killed more than 25 million ash trees.

The beetle often is difficult to detect, especially in newly-infested trees. Signs of infestation include the presence of metallic-green beetles about half the diameter of a penny on or around ash trees, thinning and yellowing leaves, D-shaped holes in the bark of the trunk or branches and basal shoots. Anyone who suspects an ash tree has been infested should contact their county Extension office, their village forester or the IDOA. EAB was first confirmed in Illinois in Kane County.

How it arrived in the state is unknown, but the IDOA suspects it was transported here in contaminated firewood. To prevent future such occurrences, the department encourages Illinoisans to purchase only locally-grown nursery stock and locally-cut firewood. The full quarantine order and detailed information about the EAB program can be accessed on the internet at www.IllinoisEAB.com.

Other counties under quarantine are Boone, Champaign, Cook, DeKalb, DuPage, Ford, Grundy, Iroquois, Kane, Kankakee, Kendall, Lake, LaSalle, Lee, Livingston, McHenry, McLean, Ogle, Putnam, Vermilion, Will, Winnebago and Woodford.

If you suspect you have EAB in your ash trees, contact your county Extension office. The Illinois Department of Agriculture also will offer a toll-free hotline at 1-800-641-3934 for extension-confirmed infestations. For more information on EAB, go to <http://www.emeraldashborer.info>.



SAFETY FEATURE: DECORATE YOUR HOME SAFELY THIS HOLIDAY SEASON

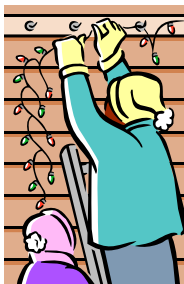


(SPRINGFIELD, Ill.) — Part of the fun and festivity of the holiday season is decorating our homes with a beautiful display of electric lights. Keep safety top of mind when decorating with lights to

keep your season merry and bright.

Electrical accidents typically increase during the holiday season. The U.S. Consumer and Product Safety Commission reports that during the two months surrounding the holiday season, more than 14,000 people are treated in hospital emergency rooms due to injuries related to holiday decorating. In 2010, the National Fire Protection Association stated that holiday lights were involved in an average of 150 reported home structure fires per year during 2004-2008. Those fires caused an average of eight civilian deaths, 16 civilian injuries, and \$8.9 million in direct property damage per year.

Safe Electricity reminds consumers to use only lights that have been safety tested and have the UL label. “Before use, check each light string for broken sockets, frayed cords, or faulty plugs,” urges Molly Hall, program director. “Replace damaged strings, and always unplug light strings while replacing bulbs.”



When decorating outside, remember the experience of Shawn Miller from Indiana. He was seriously injured when lights that he tossed into a tree made contact with overhead lines. Shawn lost his left hand and suffered numerous other injuries in the tragic accident. See his story at SafeElectricity.org.

“Please take note of your surroundings before decorating outside,” Miller urges, “especially power lines and the service connection to your home. Make sure to keep yourself, ladders, and lights far away from them.” Miller and Safe Electricity urge everyone to follow these precautions:

- Never throw holiday lights or other decorations into trees near power lines.
- Be especially careful when working near power lines attached to your house. Keep ladders, equipment, and yourself at least 10 feet from all power lines.
- Use only lights, cords, animated displays, and decorations rated for outdoor use. Follow the manufacturer’s instructions on how to use them.
- Cords should be plugged into outlets equipped with Ground Fault Circuit Interrupters (GFCIs). Use a portable GFCI if your outdoor outlets are not equipped with them.

- Do not staple or nail through light strings or electrical cords, and do not attach cords to utility poles.
- Outdoor holiday lights are for seasonal use, up to 90 days. Bring them inside after the holidays.
- Avoid decorating outside on windy or wet days. Choose to decorate in favorable weather conditions and during daylight hours.



When decorating inside or outside, follow these measures:

- Do not string together more than three standard-size sets of lights.
- Make sure extension cords are in good condition, are UL-approved, and rated to carry the electrical load you will connect to them.
- Match plugs with outlets. Do not force a three-pronged plug into a two-pronged outlet or extension cord.
- Always unplug lights—indoors and out—before going to bed or leaving your home.

When decorating with holiday lights indoors there are some other considerations that are important to keep in mind:

- Keep electric cords away from high-traffic areas, and do not run them through doorways or hide them under rugs or carpets.
- Do not let children or pets play with light strings or electrical decorations.
- Do not overload outlets. Use surge protector strips if multiple outlets are needed.
- Place fresh-cut trees away from heat sources, such as heat registers, fireplaces, radiators, and televisions. Water your fresh-cut tree frequently.

Safe Electricity wishes everyone a safe and happy holiday season. Help keep yourself, your family, and those you entertain safe by decorating safely. Learn more about electrical safety at SafeElectricity.org.



USDA CELEBRATES 150 YEARS



United States Department of Agriculture



science, natural resource conservation and a host of issues, USDA still fulfills Lincoln's vision - touching the lives of every American, every day.

As we commemorate 150 years of accomplishments, USDA is learning from past experiences and looking to the future. In the years to come, we must help address the changing needs of agriculture and rural America. We must continue to help provide a safe, ample food supply for our nation and the world. To meet those goals, we are working to make USDA a more modern and effective service provider and to deliver the best possible results for all of the American people.

Over the course of the year, I hope that Americans will acknowledge and join in our commemoration of 150 years of USDA. It is a great time to learn about our contributions to the strength and health of this nation, and to see how we can continue to partner with Americans working to provide a better life for their families.

Thank you for joining us in this celebration,

Secretary Vilsack

The ILICA office received an invitation from the USDA office in Washington to attend the 150 anniversary announcement noted in the article above. It may not seem like a big deal to some, but the fact that ILICA is even known to the federal USDA office seems to indicate that the efforts to get our name "out there" is working. Someone had to recommend that we be included in this celebration, and we thank them for it!

Heiser Insurance & Financial Services

At Continental Western Group, business insurance is what we do; period. Our single focus is to provide our customers with the business insurance coverage they need today and in the future. Continental Western Group is the Illinois **LICA endorsed carrier** for property and casualty insurance. Contact Tim Neuhauser at Heiser Insurance at 1-800-727-9775 or Continental Western Group directly at 1-800-235-2942 for more information.

CWVG
Business Insurance.

Period!

Continental Western Group

www.cwgins.com

A BERKLEY COMPANYSM

THE NEXT GENERATION Is Now Here.



The New BRON Drainage Plow

Introducing the totally redesigned BRON self-propelled drainage plow. From the ground up, new features give you better control, better productivity and better comfort.

- **Balanced Weight Distribution**
- **Improved Operator Visibility**
- **Electronic Digital Controls**
- **Ergonomic Cab Comfort**
- **FOPS/ROPS Certified**
- **Tri-Core Cooling System**

BRON

POWER TO PERFORM



rwfbron.com
1.800.263.1060

EECA11725-602-01

Wisconsin Plastic Drain Tile Corp.

Manufacture of plastic pipe and fittings for drainage.

800.362.6642

FREE DELIVERY WITHIN 300 MILES

SIZES

3" – 48"

**SINGLE WALL
AND DUAL WALL**

**FITTINGS AVAILABLE
IN ALL SIZES**

Opened an Iowa Inventory Yard
to provide speedy delivery
24 - 48 hrs in most cases

**1% of sales goes to the American Cancer
Society in support of Breast Cancer Awareness**



201 W. PLYMOUTH STREET

JEFFERSON, WI 53549

Toll Free: 1-800-362-6642 • Phone: 920-674-3332

Fax: 920-674-2782

Email: dluca@draintile.com

www.draintile.com

**Manufacturer of quality
drain tile since 1972.**





Your Supplier for Quality Drainage Products
 Fast Deliveries & Knowledgeable Staff
 Complete Line of **HEAVIEST FITTINGS**
 on the Market



*Quality You Can Count On,
 The Treatment You Deserve*

800-252-3361 www.spipipe.com

ILICA Supporter for 32 Years



"LIFE'S SHORT—DIG FAST!"

BUCKEYE 7200 MAGNUM



- STATE-OF-THE ART DESIGN
- HIGHER PRODUCTION
- BETTER BUILT

MIDWEST AUGER-AERATOR

AUGER BACKFILLERS / WHEEL TRENCHERS
 AUTHORIZED DEALER — BUCKEYE / SPEICHER
 1-800-232-7008



Precision Intakes

Full Line of Surface Water Intakes

- 8" & 10" riser with patented 8" & 10" combination Tees.
- Also 6" square & round risers with patented reducing Tee.
- Constructed of heavy-weight, high-density polyethylene.
- Parts highly adjustable & interchangeable with others on the market.
- Orifice plate placed at tee level or at ground level.
- Exclusive locking device on each part.
- User Friendly—Priced effectively.
- Adaptor available to repair old metal or broken intakes.



Type II Riser—Trash Baskets with marker cup features

Why inventory 2, when 1 serves both!



"Dealer Inquires Welcome"

~~PRECISION INTAKES~~

Norm & Coretha Rozendaal
 2064 Republic Ave West
 Monroe, IA 50170

(800) 932-7611
 (641) 259-2651
 (641) 259-3218 Fax