



Land Improvement Contractors Of America · Illinois Chapter

November - December 2009

Bill Dean
Chairman of the Board

Steve Anderson
President

David Kennedy
Vice President

David Haag
First Vice President

Janet Burtle-Doubet
Secretary

Forrest Davis
Treasurer

Directors

Dave Hurst
Wayne Litwiller

Stuart Anderson
Eric Southcombe

Bill Doubet
Mike Yordy

Ron Masching
John McCoy

Brent Breedlove
Forrest Davis

Scott Day
Jon SeEVERS

Neal Barnes
John Barttelbort

Dan Kieffer
Norm Kocher

Janet Burtle-Doubet
Executive Director

Upcoming Events:

ILICA Winter Convention -
January 14 - 16, 2010

2010 Drainage Workshops
- February 3 - 4, 2010
March 10 - 11, 2010

ILICA ANNUAL CONVENTION AND MEMBERS MEETING JANUARY 14 - 16, 2010 *(page 7)*

“The Fabulous 50’s”



Also Featured Inside

2010 Workshop Schedule *(page 6)*

OWPI Share Common Interests With ILICA *(page 14)*

Installing Subsurface Drains Under Wet Conditions *(page 20)*

Return To: Illinois LICA
P.O. Box 474
Brimfield, IL 61517

U OF I PROJECTS UPDATE




As you can see by these pictures, the excavation projects that began in August have progressed nicely over the last few months. The excavation done at the McFarland Bell Tower now has pavers and sidewalks in place around the majestic tower, although seeding still remains to be done.


The erosion testing facility has a great start on the vegetative cover and thanks to ILICA members Steve Anderson, Neal Barnes, Bill Dean, and Doug Nicholson, the final ditch excavation was completed the first weekend of November. Dr. Kalita and grad student Rabin Bhattarai, also worked the weekend to bring this project to a successful end. A special "thank you" goes out to **Birkeys** for donating (again) the Case backhoe and fuel needed to perform this final excavation.



SELF PROPELLED DRAINAGE PLOWS



- Contractor inspired innovations
- CAT® diesel engines
- Oscillating track frames & auto-self levelling main frames
- Standard line fittings, hoses and fasteners
- Climate controlled cab
- Available as add-on or self propelled units



visit us on the web at www.rwfbron.com

BRON

Tel: 1-519-421-0036
 Toll-Free 1-800-263-1060
 Fax: 1-519-421-0028
 Email: info@rwfbron.com

Time for New Equipment?

Choose Roland

Reliable Equipment

- Manufactured to withstand any environment

Responsive Service

- Roland provides service on the job site or in their state-of-the-art facilities



Komatsu Distributor



KOMATSU

Call the Roland Location nearest you today!

Bolingbrook 630-739-7474	Carterville 618-985-3399	Marengo 815-923-4966
Palmyra 573-769-2056	Springfield 217-789-7711	www.rolandmachinery.com

The ILICA News



Editor / Advertising Manager
Janet Burtle-Doubet

Chairman of the Board
Bill Dean, Mattoon

President
Steve Anderson, Marseilles

Vice President
David Kennedy, Colfax

1st Vice President
David Haag, Kempton

Secretary
Janet Doubet, Williamsfield

Treasurer
Forrest Davis, Manito

Educational Advisor
**Professor Richard Cooke
University of Illinois**

The *ILICA News* is the official publication of Illinois Land Improvement Contractors Association, Inc. at 118 E. Knoxville St., Brimfield, IL 61517.

(309) 446-3700.

Subscription price is \$25.00 per year, issued bi-monthly: Jan.-Feb.; Mar.-Apr.; May-June; July-Aug. Sept.-Oct.; Nov.-Dec., and includes one annual directory.

FEATURES

- U of I Project Update 2
- IronHustler Excavating & OSR Host Exciting Demo 5
- 2010 Workshop Schedule 6
- 2010 ILICA Convention Details 7
- Tentative ILICA Convention Agenda.....11
- 2010 ILICA Convention Registration Form 12
- 2010 ILICA Exhibit Layout13
- On-Site Wastewater Professionals of IL Share Interests with ILICA 14
- Illinois SWCD Offices Need Our Help.15
- Safety Feature: Snow Removal Using Heavy Equipment.19
- Installing Subsurface Drains Under Wet Conditions20
- Upcoming National LICA Meetings.....23

COLUMNS

- Board Meeting Notice 3
- Presidents Message4
- New Members 5
- Gabbin' With the Gals 8
- Legislative Update - Bio-Diesel Tax Incentive Reform Act..... 10
- 2009 Committee Members..... 16
- New!** Associate Member Application.....17
- Contractors Forum: Binding Contractual Agreements17
- Advertisers Index 18
- Calendar of Events18
- Contractor Member Application22

The LICA Creed



Land, the foundation of the Nation
 The basis of all wealth
 The heritage of the wise
 The thrifty and prudent
 The poor man's joy and comfort
 The producer of food, fiber and fuel
 The basis of factories
 The foundation of banks

All that man builds is from the land. We often take it for granted or even abuse it; And yet many, unthinkingly and unknowingly pass the land by. What man does with the land will be the deciding factor of his survival.



Meeting Notice

January ILICA Board Meeting
President Abraham Lincoln Hotel
 Springfield Illinois
Friday January 15th - 10:00 am

Annual Winter Member Meeting
President Abraham Lincoln Hotel
 Springfield Illinois
Friday January 15th - 1:45 pm



PRESIDENT'S MESSAGE

Greetings members and friends,

As the days grow short once more and the temps speak softly of the coming of winter, we contractors feel the push to get that last yard of dirt moved or foot of tile installed or pile of gravel spread. It is the nature of the business being subject to many forces, some within our control and some outside. As the saying goes, "grant me the strength to do what I can do, the patience to endure what I can't do, and the wisdom to know the difference." Keep in mind what really matters in this world as we feel this push of short days, deteriorating weather, and everyone wanting it done yesterday. Be safe, do it right, and don't be obsessed with that extra bit of income, the government will just tax it and more away anyway. Take a moment, enjoy the sunrise, the blue sky, and the being able to play in the dirt with big machines. What more can a guy ask for?

As the days grow short once more it comes time to renew membership in the association. You have probably received your dues notice from our ever efficient Executive

Director Janet, as I have. Take the time to mail that in simply because it is well worth the paltry fee just to get the newsletter alone and being able to read this message. Okay, so maybe not just the message. But there is a lot of value in membership, however, like all things of value, there is an investment of self before you reap the rewards. This goes out to the new members, come to the meetings, the convention, the outings, even the board meetings. They are open to all members. This is where the value is found, to me anyway. Give it a try, make an investment of some time.

Also as the year comes to a close it comes time to reset committees. This is the big part of the association. Sure the president gets a bad picture of himself and his late night ramblings published, but the real people that keep things going are the committee chairs and members on each one. This is where you learn the most, not just about the organization but the people in it with each one's host of knowledge and experiences. If you come to the convention, picnic, or area meeting and see the relationships between members and feel left out, hey we all did when we started. Then we got on committees and got to know each other and found new and good friends that go through a lot of shared experiences. Ask to be on one or two or three. Too much of a good thing, huh? Just one then. The association and you will be the better for it. Just let me know. This applies to those already on committees, if you want off or want to remain let me know as well. Since committees are reformed at the convention, then you have some time to think about it. It's worth it.

I would like to send out a special thank you to Neal Barnes, Bill Dean, Doug Nicholson, and Birkeys Equipment for getting the last bit of ditch done at the U of I before and after the last board meeting. Great work guys, and it didn't rain! We look forward to attending the class in erosion management next summer at the site when its up and running as designed. And don't forget the other workshops this winter in drainage as well, at the U of I and the Henry White farm by St Louis.

Everybody make your plans to attend the convention in Springfield this January so that we can have the largest one in many years. And think warmer weather than last year! I look forward to seeing everyone there, safe sound and loaded for the auction!

Steve Anderson, President

Power Structure

Compact Track Loaders
Compact Excavators
Compact Wheel Loaders

Backed by a highly trained team
in product and service

Contact your full service dealer for more information

Central IL AG - Atlanta 200 Sharon St. Po Box 506 Atlanta, IL 61723 P: 217-648-2307	Central IL AG - Clinton Rt. 10 East Clinton, IL 61727 P: 217-935-8373	Central IL AG - Farmer City 792 US Hwy 150 E. Farmer City, IL 61842 P: 309-928-2154
---	---	---

TAKEUCHI
The Power of Product and Support
www.takeuchi-us.com

IRONHUSTLER EXCAVATING & OSR HOST EXCITING DEMONSTRATION



Ken Sidwell and Dave Schielein, pictured to the right, were quick to agree to a concrete recycling demonstration in conjunction with ILICA's area 3 member meeting series and selected the normally dry and cool last week in October for scheduling. Needless to say, during this unusually wet year we've endured in Illinois, that didn't pan out exactly as everyone hoped. The outstanding interest voiced by area contractors was tempered by strong wind and storms that pushed through the Peoria area Thursday afternoon, but there was still a nice size group of very interested contractors who witnessed an informative and exciting demonstration.

Undaunted by the challenging weather, a tent that had been set up that morning was positioned to allow visitors to

watch the recycling demonstration from inside, protected from the elements. But as luck would have it, the rain began to let up as the 5:00 pm demo started and actually stopped long enough to let contractors get right next to the action as the Rubblemaster RM80 seemed to effortlessly chew through the large pile of debris.

The fabulous dinner, catered by Alwan's and Sons, began a little early as the rain started again. It just doesn't get any better than Alwan's, but there were still several contractors that had to be coaxed in off the crushers in the IHX lot. It was dry inside for the meal and OSR provided several raffle gifts to go along with the 50/50 drawing. The 7:30 demo went on as planned, although guests watched from the tent for this one.

The group also enjoyed a few special guests. Bruce Barnhart, Nat'l LICA president drove in from Iowa to see the demo and Steve Anderson, ILICA president served as MC for the evening's program. Javier Davila, Business Development Manager of RubbleMaster HMM, was also in attendance and secured sponsorship from RubbleMaster for the tent. (which really came in handy!)

Continued on page 9



CORRECTIONS!



You may recall seeing this picture in the last issue of *ILICA News* from the Martin Equipment in Rock Island Hosts Area 3 Member Meeting article. If you didn't already know the people in the picture you may now believe that the name of the gentleman standing in the middle is "Joe Sheldon" of Martin Equipment. Actually, there is no such person.

Due to an unfortunate lapse in concentration on the editors part, the names of two different Martin managers were combined to make "Joe Sheldon." Actually, his name is **Joe Dalton**, who worked very hard to coordinate this meeting and whose efforts deserve recognition...with the proper name!

Thank you Joe and sorry about that!

NEW MEMBERS

Active Contractors



* **David Casey**

Countryside Drainage LLC - Rochelle

David Krumholz

Krumholz Brothers Landscaping - Peoria

* The incorrect contractor name was listed in the last issue of *ILICA News* for Countryside Drainage LLC. **David Casey** is the correct name, which the editor sincerely apologizes for messing up!

Associate Members

Wisconsin Plastic Drain Tile - Jefferson, WI

Thank You!

2010 WORKSHOP SCHEDULE

DRAINAGE SYSTEM SURVEY & DESIGN



One of the many benefits of our outstanding partnership with the University of Illinois is having access to great minds like Dr. Richard Cooke. Not only is Dr. Cooke one of this country's leaders in drainage, he is gracious enough to carve time out of his busy schedule this year to facilitate two (2) drainage schools for ILICA contractors.

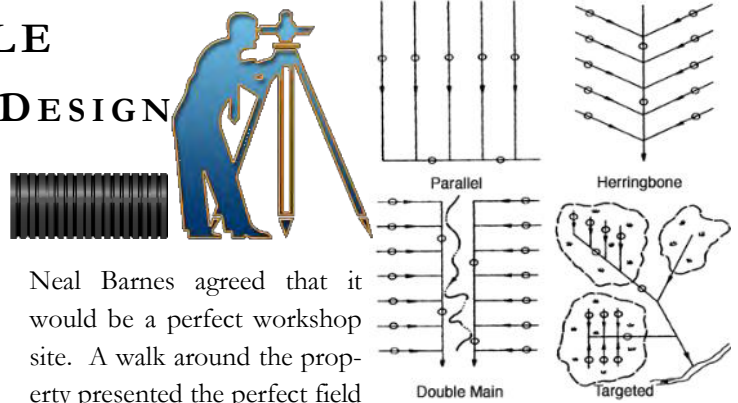
After a visit to the Henry White Farm last spring, which is owned by the Department of Agriculture, Dr. Cooke, ILICA president Steve Anderson and show committee co-chair



EROSION CONTROL WORKSHOP

This workshop is another example of our outstanding partnership with University of Illinois. The university sought ILICA's help with the construction of this highly-specialized property (see pictures on page 2 of the nearly completed excavation) in exchange for annual workshops taught by university professors. In **August 2010** Dr. Kalita, Associate Professor of Agricultural & Biological Engineering at Champaign, will hold the first ILICA Erosion Control Workshop at the site.

As is the case with the drainage workshop at this same location, the classroom has a 20 student capacity, so if this is a workshop you simply don't want to miss, please sign up early. The testing facility will have rain simulators installed over the berm, collection ditches to measure siltation and a detention pond to provide water for and collect water from the testing. This very specialized property promises to provide an unparalleled training opportunity for ILICA contractors.



Neal Barnes agreed that it would be a perfect workshop site. A walk around the property presented the perfect field for a survey and design program and the large, modern building on site can hold as many as 50 students, if not more.

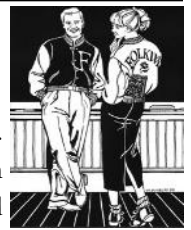
The two day workshop is tentatively scheduled for **February 3 - 4, 2010** and will include the field survey sessions followed by the classroom session on system design. A similar program is scheduled at the erosion control testing facility in Champaign on **March 10 - 11, 2010**, however this venue has a 20 person capacity classroom.

Registration forms will be in the next issue of the *ILICA News* for both drainage workshops as well as the erosion control workshop mentioned below.

(Upper left to lower right) Dr. Richard Cooke at one of the many bio-reactor sights in Illinois; Areal view of the Henry White Farm near Millstadt, IL; Erosion Control Testing Facility sediment collection ditches; Dr. Kalita overlooking the detention pond during excavation at the erosion control Testing facility.



2010 ILICA WINTER CONVENTION DETAILS



This year marks Illinois ILICA's 53rd Annual Member Meeting and Convention and there is much to celebrate after a year of growth and renewed vigor within the organization. You can find the convention schedule on page 11, the registration form on page 12 and exhibit layout on page 13 and the theme this year is the "Fabulous '50's." The schedule and exhibit layout is very much like last year but there is also a lot new on the agenda for this year's event.

The convention officially starts on Thursday, January 14th with registration at 8:00 am in the pre-conference area. Stop by and get your welcome packet, area maps and local information. Enjoy a continental breakfast and visit with other ILICA families before the first educational session at 9:00 am.



There is a wider variety of educational sessions at this year's convention starting with Thursday morning sessions, **Drainage & Sustainability Issues at The Rural / Urban Interface** followed by **Welding Basics** at 10:30 am. After lunch, Dale Kuhn will provide a **J.U.L.I.E. update** on Legislative changes recently put in place. Thursday's final session will

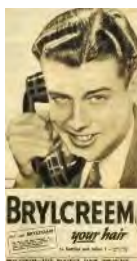


be an overview on various **Bidding Software** programs, which will wrap up just as the exhibit hall is opening.



As always, the big fun starts with the hospitality hour and Early Bird Dinner on Thursday evening. There is another "Best Dressed" prize and everyone is encouraged to dress the part for the "Fabulous '50's" theme night. This should be an easy one to dress up for. How about trying to mimic a favorite "Grease" character; dig out the old poodle skirt or pedal pushers, saddle shoes, and neck scarves. Guys, get out your old leather jackets, a white tee shirt and roll up the cuffs of your jeans. You're just a handful of Brylcreem away from the total look!

Associate Hospitality Rooms are located on the 2nd floor conference center, away from guest rooms and will open after the auction on Thursday



as well as after dinner on Friday. Soft seating areas will be located in the hallways for conversation and overflow guests.

The Ladies Day Outing will be a little different than years past as well. Springfield has one of the best cosmetology schools around and our ILICA Ladies get to spend an enjoyable morning being pampered at the University of Spa & Massage Therapy Arts. All ladies will receive a complimentary \$10 give card for the spa, to be used for any of the many services offered on site. And many of the Esthiology, Nail Technology and Cosmetology services are at or under \$10. Lunch at Mariah's will follow and then it's off to the Cork Screw Wine Emporium for a chocolate tasting from local confectionary, Pease's, and a wine tasting before returning to the hotel for a short break before dinner and the Newlywed Game.

Back at the hotel, the exhibits will be open and the final Board of Directors meeting will round out the morning. Following lunch and the partner association reports the annual member meeting begins at 1:45 pm where the real business of the convention takes place. Our own version of "The Newlywed Game" is scheduled for Friday evening after dinner, which should prove to be very entertaining.



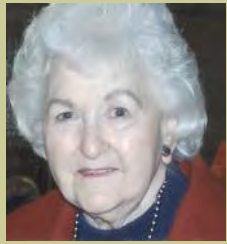
Saturday will start out with the door prize breakfast where new members of the year are recognized followed by two more educational sessions; **Basics of Business Management** and **What to Charge: Machine Cost Analysis**. After lunch at the hotel, the Old State Capital and Lincoln -Herndon Law Office tour will begin at 1:30 pm, bringing our group back to prepare for the Awards banquet and ceremony by 3:30 pm. Tickets will be on sale throughout the convention for another Flat Screen TV raffle which will be drawn for on Saturday evening as well.



The final evening will conclude the convention with the banquet and award presentation and social time in the President's Hospitality room. All in all, there is a lot on the agenda for this year's event and area directors are prepared to encourage all new contractor members to take advantage of their FREE registration benefit and see how much fun can be had at the ILICA convention.



January 14 - 16, 2010



GABBIN' WITH THE GALS...



It seems our weather is changing flavors; from very nice and Indian summer to brrrr and heavier jackets. In some U.S. areas, they are experiencing snow already - hope Mother Nature puts a hold on that for our neck of the woods. The grass has been a nice shade of green for many months and the snow just reminds us of growing older and hair turning white. As you all know, this person has been used to that for a long time. My mother was 36 when I was born so I saw her only with white hair so I must have inherited that enigma. I have an idea we will have to resort to that old saw; what you see is what you get!

My family arranged a very nice celebration for me in September. My daughter orchestrated the whole thing - families brought the meat they preferred and cooked it on the grill and each family brought a side dish so we had a very good meal. My daughter knows my favorite meat and make sure it was cooked as I like it. My sons were busy seeing to other details so everyone participated. We have a large back yard and the young ones had a ball out there. This old lady even had a birthday cake - no numbers or candles, just a decorated cake. The whole evening was another memory to put in my memory jar. Amen.

How many of you have hobbies? There are several ladies in our group who are very good at crafts; sewing, knitting, etc. It's highly probable they could open a retail shop because they are so good at what they do. Of course if they are needed in their family business they might not have time to operate that venture. Rambling Rose is no good at crafts, but enjoys crossword puzzles in our daily newspaper, even so brave as to try the Sunday one, which is more difficult; in fact many puzzle addicts won't even try it. I've never been able to complete one but that's okay as long as it was close. The reason I try it is because it is a challenge and that is just like a magnet to me.

Someone may be trying to do a good deed and give a donation for a good cause and the result will no doubt multiply as this one and that one finds out and contacts the same person. Result - tons of mail from all over the place with no let-up! This happened to yours truly and believe me, it is no picnic. As a solution I have written to the ones for one day and asked that my name be removed from their records and not to sell or give my name/address to anyone. You would think because I sent only the one check many months ago that no one would write to a person who does not donate. Thought for sure when no money was forthcoming it would go away, but they must like to write my name. They ruined everything because now nobody gets a donation from me - I have had it!

What do you think of our country now? Frankly, I am worried because of what is being said and done in D.C. At

least the plans they propose. Some days a person wonders if we will have a United or Dis-united States when this administration is through! I am a firm believer that if it work's don't monkey with it. There was a letter in my mail a while back that asked if I would be in favor of making D.C. a state! Well, I would hope not. Only some (not all) politicians would like that. The nice round figure of 50 states sounds just fine to me. This gal would not like being a politician, having to ask everyone and their second cousin once removed for finances to conduct your campaign. One day I received a request from someone in Louisiana wanting a donation for a bid to congress! Lately I have heard that we have five candidates for the office of governor of Illinois. Would you want that clean-up job? We hope the shoes of the candidate who wins doesn't fill the feet of our last governor. At least so far, none are from Chicago!

How about this epitaph: "Pause, stranger, when you pass by - As you are now, so once was I. As I am now so you will be, so prepare for death and follow me." An unknown passerby read those words and underneath scratched this reply - "To follow you I'm not content, until I know which way you went!"

As I write this we are in "rain" mode. Sometimes Mother Nature is slow to find the shut-off valve. It prevents our farmers from being able to get their crop out and it shuts off a lot of work for our contractors in most places. Well, we mortals sure don't have a vote for that and have to trust in a higher court when to give us relief. Do you watch the weather on television? They give so much information you have to separate the extra course from the main menu. It is something though, how much knowledge they have. They also have to do some changing from time to time when Mother Nature throws a curve ball!

Would you believe that my parents were married on Halloween? (Okay, I can hear the smart remarks from here!) Maybe people didn't celebrate this holiday as much in the middle ages. (There, I've called your bluff before you thought of something) One of the favorite things my husband enjoyed was helping make individual packets of candy for the trick or treaters. It's tricky because you never know how much to make - it's just a big guess. I used to pick out candy that I liked and if there were any leftovers they were mine. Can't do that now because Mr. Arthritis does not like it and I pay hurtfully for it.

The word for this session is U.S.A. It is the writers opinion that if we have a country undivided after this administration, we will owe it to The One Above.

It won't take long to get used to the cold weather and most of us don't like it, but remember the old saying "lump it." So that will be THE word for us. Remember to pray for our country and get the overcoat out!



.....Rambling Rose



IRONHUSTLER EXCAVATING & OSR HOST EXCITING DEMONSTRATION



*Continued from
page 6*



Member and guests enjoy a great meal and fellowship at IHX



(right) Bruce Barnhart, Javier Davila and Wayne Litwiller discuss crushers following the first demonstration.

in sustaining these important meetings.

As another special treat, ILICA directors, Dave Hurst and Bill Doubet each spent a few minutes in front of the crowd, explaining what ILICA means to them and telling a few of the ways the organization has helped bring their business's where they are today. Jerry Biuso, who normally presents LI-CA benefits, got an evening off and watched as his example and hard work inspired ILICA members to take the next step

A heartfelt thank you goes to Dave Schielein, Ken Sidwell and Mark Cosner from IronHustler Excavating and OSR for hosting this Area 3 meeting and providing an outstanding demonstration of an incredible piece of equipment. Thanks to Javier and RubbleMaster HMH for sponsoring the tent and joining us for the evening. Another special thank you to Steve Anderson, Dave Hurst and Bill Doubet for exhibiting the leadership ILICA is known for and putting their passion for the organization on their sleeves for all to see. Their example will go a long way to inspire other areas to follow Area 3's successful efforts in promoting ILICA.



Need Insurance Coverage? Try Illinois-LICA!

We offer broad coverage designed for the needs of heavy equipment contractors.

- Safety Group Dividend
- Wide Range Protection
- Claims & Underwriting Expertise
- Competitive Pricing
- Payment Plan



301 Main Street • Sanborn, IA 51248

1-800-831-8545

www.prinsins.com



LEGISLATIVE UPDATE; BIODIESEL TAX INCENTIVE REFORM & EXTENSION ACT OF 2009

As you may know, the biodiesel tax incentive is set to expire on December 31, 2009. The tax incentive is vital to the U.S. biodiesel industry and its extension is a top priority for ASA. If the biodiesel tax incentive is allowed to expire, the production and use of biodiesel in the U.S. will come to a halt. The economics of biodiesel at this stage will simply not work absent the federal tax incentive. As we approach the end of the year, it is still unclear when, or if, Congress will act on tax legislation that addresses the biodiesel tax incentive.

Senator Maria Cantwell (D-WA) and Senator Charles Grassley (R-IA) have introduced S. 1589, *the Biodiesel Tax Incentive Reform and Extension Act of 2009*. This bill would extend the credit for five years and restructure it as a production excise tax credit. A strong show of support for this legislation is necessary if we are going to successfully extend the biodiesel tax incentive. Thus, it is vital that you contact your Senators today and ask them to add their name as a cosponsor of S. 1589.

Senator Dick Durbin (D-IL) has already agreed to co-sponsor the bill. ASA members in Illinois are encouraged to contact Durbin's office to thank him for his support of this top ASA priority.

Following is a message that we have provided for use in contacting your Senators to urge their support and co-sponsorship of S. 1589.



Dear Senator _____:

As a member of the American Soybean Association (ASA), I want to urge your support and co-sponsorship of S. 1589, the Biodiesel Tax Incentive Reform and Extension Act of 2009, introduced by Senators Cantwell and Grassley.

Extension of the biodiesel tax incentive is a top priority for ASA. Biodiesel has provided a significant market opportunity for U.S. soybean farmers, as well as jobs and economic development for rural communities. As you know, biodiesel is one of the cleanest burning biofuels currently used in commercial markets. Biodiesel is a renewable and sustainable energy source that can play a significant role in our national efforts to increase our energy security and improve our environmental footprint. The biodiesel industry is creating valuable green jobs and making a positive contribution to the economy. In 2008 alone, the U.S. biodiesel industry supported over 51,000 jobs, added over \$4 billion to the nation's Gross Domestic Product (GDP) and generated over \$866 million in tax revenue for federal, state and local governments.

The biodiesel tax incentive is currently set to expire on **December 31, 2009** and production will cease if the tax incentive is not extended. A multiple year extension of the incentive is needed to provide certainty and stability in the marketplace. In addition, ASA supports reforming the biodiesel tax incentive by shifting the current blenders excise tax credit to a production excise tax credit. This reform will improve administration of the incentive, eliminate potential abuses and improve tax compliance.

Again, I urge you to co-sponsor S. 1589 and actively seek extension of the biodiesel tax credit before it expires at the end of the year. Thank you for your consideration.

Source: American Soybean Association

STADEL ELECTRONICS LASERS

Authorized Service and Sales for Laserplane-Trimble
Also servicing most other models

**SOLVING YOUR LASER PROBLEMS FOR
OVER 30 YEARS**

Call anytime
815-777-0193

Tom Stadel
5928 W. Stagecoach Trail
Galena, IL 61036

LASEREX^{inc.}

Trimble

Spectra Precision

Rex M. Adams
President

LASEREX, inc.
4344 LERNA RD.
MATTOON, IL 61938

Rex (217) 234-9076
Mobile (217) 254-9076
Fax (217) 235-2737
laserexinc.com

— Authorized Service and Sales —
Construction & Agricultural Machine Control Systems



2010 ILICA Convention Schedule January 14 - 16, 2010 President Abraham Lincoln Hotel, Springfield



EDUCATION

Wednesday, January 13th

- 2:30 pm - Convention Committee and Hotel Staff
- 3:15 pm - Convention Committee
- 5:15 pm - Budget Committee
- 6:30 pm - *Looking for activity*

Thursday, January 14th

- 7:30 am - Committee chair check in
- 8:00 pm - Registration/Cont. Breakfast
- 9:00 am - 2:30 pm - Exhibitor Set up
- 9:00 - 10:15 am - Drainage & Sustainability Issues at The Rural / Urban Interface - John Church, U of I Extension Educator - Northern Illinois**
- 10:30 - 11:45 am - Welding Basics - Wayne Chuko - The Lincoln Electric Company**



- 12:00 - Lunch
- 12:30 pm - Agency Reports

1:15 - 2:15 pm - J.U.L.I.E. Update - Legislative Changes - Dale Kuhn, Damage Prevention Manager

2:30 - 3:30 pm - Bidding Software - Facilitator

- 3:00 - 7:30 pm - Exhibits Open
- 4:00 pm - Awards Committee
- 4:00 pm - Nomination Committee
- 5:00 pm - Hospitality Hour in Ballroom

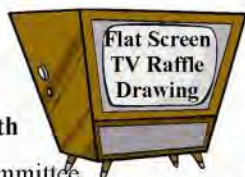
5:15 PM - Exhibitor Group Photo

6:00 pm - "FABULOUS 50's" Early Bird Dinner

6:15 pm - Convention Chair Welcome

7:45 pm - LIVE Auction

9 pm - 1 am - Associate Hospitality Rooms Open



DOOR PRIZE BREAKFAST

Saturday, January 16th (cont.)

- 6:00 pm - Awards Banquet
- 7:30 pm - Awards Ceremony
- 8:30 pm - Presidents Hospitality Room Open**

Friday, January 15th

- 7:30 am - Devotional Service
- 8:00 - 9:00 am - Breakfast w/Legislators
- 8:00 to 11:00 am - Registration
- 8:00 am - 1:00 pm - Exhibits Open
- 10:00 am - Final Board of Directors
- 12:00—Lunch
- 12:30 pm - Partner Reports
- 1:15 pm - Associates Committee



- 1:45 - Annual Member Meeting**
- 2:00 pm Exhibit tear down

- 5:00 pm - Hospitality Hour
- 6:00 pm - Dinner
- 7:30 pm - "The Newlywed Game"
- 9:00 pm - 1:00 am Associate Hospitality Rooms Open



Saturday, January 16th

- 7:30 am - Devotional Service
- 8:00 am - **Door Prize Breakfast** - New Members Recognized
- 9:15 - 10:15 am - Basics of Business Management - Steve Anderson**
- 10:30 - 11:30 am - What to Charge: Machine Cost Analysis - Dustin Courson, CPA**
- 12:00 lunch
- 1:00 pm - Old State Capitol & Lincoln / Herndon Law Office Tour**
- 5:00 pm - Hospitality Hour
- 5:45 pm - Group Photos: Officers, Directors & Members**



EXHIBITS

Ladies Program



Thursday, January 14th

- 10:30 am - Guest Speaker
- 1:30 pm - Make & Take

Friday, January 15th - Ladies Day Outing

- 9:00 am - Board Bus
- 9:30 am - Morning at the Spa
- 12:00 Lunch at Mariah's



1:15 pm - Pease's Chocolate Tasting and Wine Tasting at the Cork Screw Wine Emporium



3:45 pm - Return to Hotel

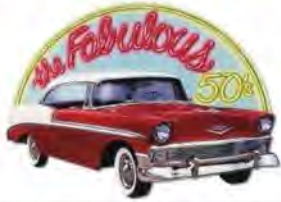
6:00 pm - Dinner & "The Newlywed Game."

Saturday, January 16th

- 8:00 am - Door Prize Giveaway Breakfast
- 10:00 am - Guest Speaker
- 1:00 pm - Old State Capitol & Lincoln / Herndon Law Office Tour
- 5:45 pm - Group Photos
- 6:00 pm - Awards Banquet
- 7:30 pm - Awards Ceremony

Illinois LICA Convention & Members Meeting

Welcome to the Fabulous 50's January 14 - 16, 2010



Illinois LICA is going to turn the President Abraham Lincoln Hotel into "Coolsville" Illinois this January. All ILICA Cool Cats & Dolls are in for a "boss" experience at this year's convention. A Fabulous '50's Early Bird Dinner will start things off Thursday evening in the exhibit hall, followed by the kickin' auction.



Please contact **Natalie** at the President Abraham Lincoln Hotel, (217) 544-8800 ext. 4180 or Janet at the ILICA office as soon as possible to make room reservations. Our guaranteed room rate is \$90. (Limited # of handicapped rooms available)

Return completed Registration form to: **Illinois LICA • P.O. Box 474 • Brimfield, IL 61517**
or fax to: **(309) 446-3744**

Pre-Registration for the ILICA Convention – January 14 – 16, 2010

Name: _____ Spouse's Name: _____
 Address: _____ City: _____ State: _____
 Member Type: _____ Area: _____ Company Name: _____
 Child(ren) Name(s): _____

Price of registration includes all meals & activities listed in program, unless otherwise noted.

Total Enclosed: \$ _____ (Make check payable to ILICA)



**Educational Workshops • Exhibit Booths • Awards Banquet • Door Prizes
 Ladies Program • Auction • Flat Screen TV Raffle • Old State Capital Tour**



Pre-Registration fee: Must be received in our office by January 2, 2010



	Full Participation (3 days)	One Day Participation
Individual	\$165	Individual \$ 75
Couple	\$265	Couple \$120
Child (under 12)	\$ 75	Child (under 12) \$ 45

(Indicate which day (s) you plan to attend)

Thursday Friday Saturday



Awards Banquet - Saturday, January 16



_____ Prime Rib of Beef with Cabernet Au Jus
 # _____ Prosciutto & Fontina Stuffed Chicken Breast



Cost of Registration after January 2, 2010

Full Participation (3 days)

Individual	\$200
Couple	\$300
Child (under 12)	\$100



One Day Participation

Individual	\$100
Couple	\$150
Child (under 12)	\$ 60



(Indicate which day (s) you plan to attend)

Thursday Friday Saturday

Day At The Spa

Ladies Program - Friday, January 15

► University of Spa & Massage Therapy (includes complimentary \$10 gift certificate)

Pedicure Station (5 limit) Facial Station (5 limit) Manicure & Hair Stations

(First (1st) 5 registrations for limited stations will be honored)

► Lunch at Mariah's ► Pease's Candy Sampling & Cork Screw Wine Emporium

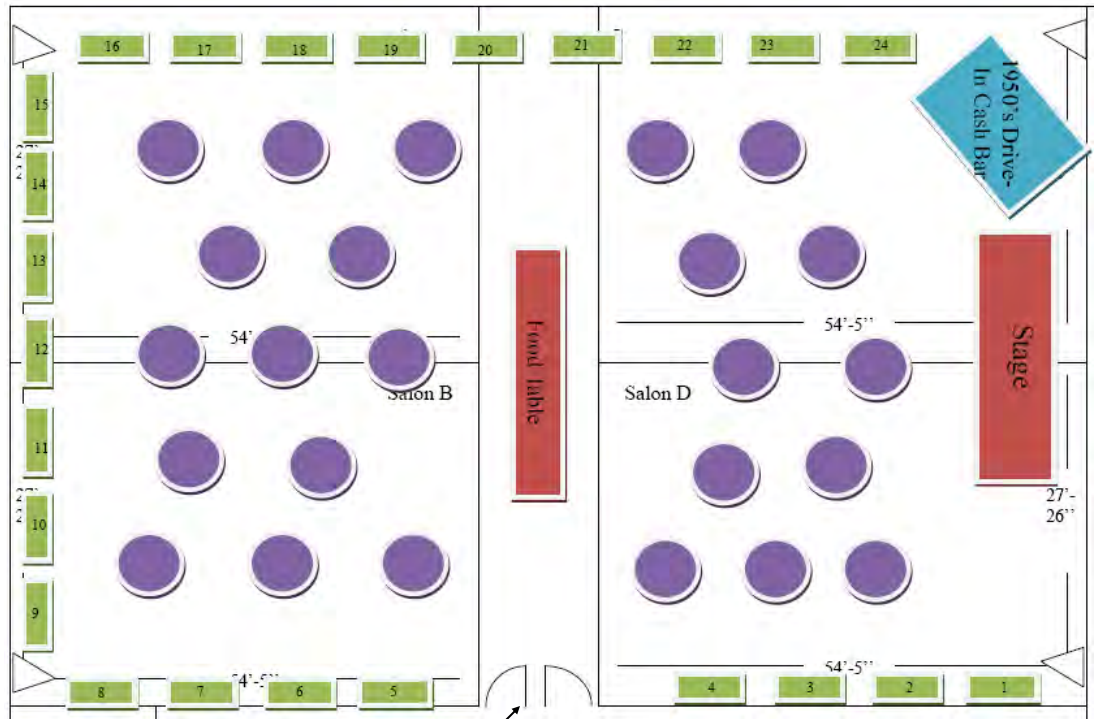
I / we will attend: _____ # in party (Please be sure to mark spa selection(s))



ILICA WINTER CONVENTION EXHIBIT LAYOUT

Exhibit space is available for the 2010 Convention and will be arranged like last year, using the familiar perimeter layout shown to the right. There are 24 exhibit spaces available, but if you have a special spot in mind, please contact the ILICA office as soon as possible.

The main ballroom entrance is marked by the arrow and the service entry doors are shown at each corner. Each exhibit space includes a 6' skirted table and 2 chairs. One (1) full participation registration (covers all meals) is included with each exhibit space reserved.



Exhibit, sponsorship and registration forms will be mailed out soon and don't forget to check our website, www.ilica.net, for all the latest ILICA news.




FRATCO... Now serving Indiana AND Illinois!

With more than 86 years of supplying quality drainage products, you can count on FRATCO!

FRATCO DELIVERS - We maintain a full inventory of drainage products ready for delivery, so we always have what you want, when you want it. Our extensive manufacturing capabilities ensure that your order is filled promptly and accurately.



FRATCO IS FRIENDLY - Our friendly staff is available to answer any questions about our products and will provide unparalleled delivery and flexibility. Call us any time for answers to your questions about manufacturing or installing HDPE pipe and fittings!



FRATCO PRODUCES - Our products include:

- 2" - 24" HDPE Single Wall Pipe
- 4" - 60" HDPE Smooth-Corr Pipe
- Water Tight and Silt Tight Joints
- Full line of HDPE Fittings and Accessories
- Custom Fabricated HDPE Fittings
- Septic Tanks, Distribution Boxes, and PVC Pipe



FRATCO NOW SERVES ILLINOIS

- This Spring, Fratco acquired Eastern IL Clay Company. We look forward to introducing new customers to our unparalleled quality and friendly service!



FRATCO INC.

PO BOX 368
 Francesville, IN 47946
 PH: 800-854-7120
 F: 219-567-9296

PO Box 657
 St. Anne, IL 60964
 PH: 800-475-8144
 F: 815-427-8150

www.fratco.com / office@fratco.com





Quality - STANDARDS MEAN SOMETHING! That's why every inch of FRATCO pipe that bears ASTM and AASHTO markings is manufactured from 100% virgin HDPE that is in-house tested for the full performance criteria that these standards require. Our philosophy is that pipe installed in the field is no less important than pipe installed under a highway.

“ON-SITE WASTEWATER PROFESSIONALS OF ILLINOIS” SHARE COMMON INTERESTS WITH ILICA



The *On-Site Wastewater Professionals of Illinois (OWPI)* is the professional association for any individual or business involved with the on-site sewage treatment and disposal industry in Illinois. Its membership includes contractors/installers, regulatory officials, equipment manufacturers/suppliers, engineers/designers and soil scientists. OWPI was initiated in 1996 and has evolved into a strong association representing over 150 members. OWPI's membership includes individuals and companies from all parts of the State of Illinois. In addition, OWPI has corporate sponsors from several States, including Illinois. Several members of OWPI are also active in ILICA.

The primary goal of OWPI has been to represent its membership in issues concerning State and local laws and regulations. In this regard, representatives of OWPI have been involved in legislative issues that affect both the regulatory community, as well as industry. Members of OWPI have testified at several public hearings and legislative meetings regarding proposed legislation and rule changes. OWPI, as well as LICA, has a representative on the Illinois Private Sewage Disposal Advisory Commission.

A secondary role of OWPI is to provide training and an exchange of information between its members. In this regard, OWPI publishes a quarterly newsletter, maintains a website at (www.owpi.net). OWPI also sponsors an annual Conference and Tradeshow, held each year at the Gateway Convention Center in Collinsville, Illinois. The 7th Annual Conference will be held January 25-27, 2010. Information and registration forms will be available on the website.

The Illinois Department of Public Health currently has proposed changes to the Illinois Private Sewage Disposal Act and Code. The proposed changes will have significant impact on both the regulatory community, as well as industry. A copy of the proposed changes can be found on OWPI's website. Anyone who is involved in the on-site industry is urged to read the proposed changes. There will be an opportunity for public comment.

For additional information regarding OWPI, please check our website. Also, you can contact Rick Maguire, President of OWPI at: **Rick Maguire - Maguire Backhoe**
17816 Nine Mile Road, Virden, IL 62960

Submitted by:

Calvin Locker

Phone: 217-965-3063

Email: jmaguire@royell.net

Heiser Insurance & Financial Services

At Continental Western Group, business insurance is what we do; period. Our single focus is to provide our customers with the business insurance coverage they need today and in the future. Continental Western Group is the Illinois **LICA endorsed carrier** for property and casualty insurance. Contact Tim Neuhauser at Heiser Insurance at 1-800-727-9775 or Continental Western Group directly at 1-800-235-2942 for more information.

CWGW
Business Insurance.

Period!

Continental Western Group

www.cwgins.com

A BERKLEY COMPANY SM

ILLINOIS SWCD OFFICES NEED OUR HELP



Many ILICA contractors are aware of the severe budget cuts that forced the closing of several SWCD offices. Since 2007, Illinois Soil and Water Conservation Districts have lost over 60 veteran employees or more than 1/4 of our staff, due to severe budget cuts imposed by the state. Some counties have been able to hold on to one or more of their employees but have found that reduced hours are now needed because of the insufficient funds being provided by the state, not to mention the untimely delays in receiving those funds. Allocations to districts from the state have fallen nearly 30% since 2002.

Housed together and working side by side, SWCDs and USDA Natural Resources Conservation Service staff annually provide conservation assistance to 1.5 million customers in all 102 counties in the state. Conservation systems are annually applied on more than 500,000 acres of land statewide by your contractors, funded by local, state and federal programs, technically designed and administered by SWCD and NRCS employees. This saves hundreds of thousands of tons of soil and protects water quality, not to mention boosting a sagging economy. In FY09 alone that equated to over \$184,000,000.00 and in FY10, Illinois will receive an additional \$200,000,000.00 in federal natural resource conservation program dollars for the Farm

Bill programs. However, the federal dollars available for Illinois are contingent upon the ability of the state to utilize these funds. The number of SWCD employees providing technical and administrative assistance should be increased not decreased in order to fully take advantage of federal program dollars for natural resources conservation.

There are as many as 3,000 local units of government that exist to provide needed services to the people of Illinois. Each of these governmental units receives some form of support from sales or property taxes. SWCDs, however, rely solely on the General Assembly as they have no taxing authority and yet they are one of the few governmental bodies that are able to provide an economic benefit that is greater than the amount of money appropriated by the General Assembly. Without the SWCD to provide services to the citizens in the county, much of the federal, state and local money that is used to protect our natural resources will not be able to be utilized and will be lost to Illinois' economy.

Please feel free to use the form letter below to let your state representatives know how you feel. Contact the ILICA office for help locating your district representatives or to request an electronic version of the form letter below. Helping our partners in conservation helps us too!

Submitted by: Annyce Winters, Green Co. SWCD

Dear Senator/Representative,

I am a land improvement contractor working very closely with county soil and water conservation districts and the USDA Natural Resources Conservation Service employees putting conservation practices on privately owned lands. The work that I do for these agencies is not something that can be done 24 hours a day, 365 days a year. This is work that is done when the crops are harvested and when field conditions permit.

This year has been a very trying year for not only agriculture but for land improvement contractors who have been contracted by landowners to put conservation practices on their land. Not only have we experienced substantial rainfall this year and a late harvest but we have now run into layoffs and hourly reductions by the very people that administer the state programs and assist with the federal programs. Soil and water conservation districts have been hit quite hard by severe budget cuts and delays in the release of funds by the state which has seriously impacted their ability to deliver soil and water conservation and natural resource protection programs to the people of Illinois.

Landowners who have signed contracts with the local soil and water conservation districts for the States Conservation Practices Program cannot fulfill those contractual agreements until the soil and water conservation district employees have surveyed and designed the conservation practice structure and I cannot perform my contractual agreement with the landowner until I have the designs in hand. The funding for the Conservation Practices Program comes from the State of Illinois but it seems that the State of Illinois has forgotten to pay the people who survey and design these practices. Federal dollars will also be impacted and possibly lost if soil and water conservation district employees are not there to assist in the delivery of the federal programs.

Soil and water conservation district employees provide an economic benefit that is greater than the amount of money that has been appropriated for their use by the General Assembly. Without the SWCD to provide services to the citizens in the county, much of the federal, state and local money that is used to protect our natural resources will not be able to be utilized and will be lost to Illinois' economy. In FY 09 that amount equated to over \$184,000,000.00. If the current situation is not corrected that is \$184,000,000.00 lost to Illinois' economy and a loss to the preservation of the state's natural resources.

I hope that you will take the time to find legislation that would support and protect the jobs of the soil and water conservation district employees who not only generate revenue that benefits the State's economy but most importantly provide the much needed support to programs that conserve and protect the State's land, water, air and other natural resources.



Associate

Corey Getz - ADS, Chair
 Mark Baker - Springfield Plastics
 Eugene Glueck - Martin Equipment
 Bruce Mosier - Prins Insurance
 Chad Nicholson - Eastern IL Clay
 Ron Schlatter - Schlatter's Inc.

Auditing

Forrest Davis, Chair
 Steve Anderson
 Ron Masching

Awards

Bill & Janet Doubet, Chair
 Brent & Tracy Breedlove
 Rose Day
 Bill & Bev Dean

Budget

David Kennedy, Chair
 Forrest Davis
 Dan Day
 Bill Dean
 Wayne Litwiller

By-Laws

Stuart Anderson, Chair
 Bill Doubet
 Dave Hurst
 Stan SeEVERS
 Joe Streitmatter

Certification

Dave Hurst, Chair
 Forrest Davis
 Wayne Litwiller
 Ron Masching
 Prof. Kent Mitchell, U of I
 Stan SeEVERS

Certification Board

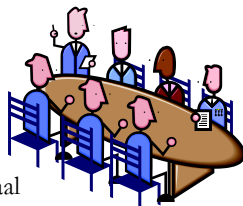
Dave Hurst, Chair
 Forrest Davis
 Dave Kennedy
 Wayne Litwiller
 Ron Masching

Convention

Kristin Kutemeier, Chair
 Neal & Tracey Barnes
 Bill & Bev Dean
 Greg & Jennifer Furkin
 David & Lori Kennedy
 Joe & Jackie Streitmatter

Devotions

Jean Davis, Chair
 Steve Anderson
 Norm & Coretha Rozendaal

**Education**

Carol Kiley, Chair
 Neal Barnes
 Brent Breedlove
 Prof. Richard Cooke—U of I
 Bob Grothaus
 Ron Masching
 Mike Yordy

Executive

Steve Anderson, Chair
 Janet Burtle-Doubet
 Forrest Davis
 Bill Dean
 David Haag
 David Kennedy

Golf Outing

Wayne Litwiller, Chair
 Jerry Biuso
 Janet Burtle-Doubet
 Forrest Davis

Headquarters

Dan Day, Chair
 Steve Anderson
 Mark Baker
 Dale Collinson
 Forrest Davis
 David Haag

Industrial & Business Relations

Wayne Litwiller, Chair
 Charlie Adams
 Dale Collinson
 Dan Day
 Bill Dean
 Bill Doubet

Insurance

Dave Hurst, Chair
 Charlie Adams
 Dan Day
 Stan SeEVERS

Ladies

Janice Litwiller, Chair
 Jean Davis
 Bev Dean
 Cathy Masching
 Jackie Streitmatter

Legislative

Steve Anderson, Chair
 Neal Barnes
 Lee Bunting
 Dale Collinson
 Bill Doubet
 Dave Hurst
 Carol Kiley
 Norm Kocher
 Joe Streitmatter

**Long Term Planning**

Steve Anderson, Chair
 Stuart Anderson
 Neal Barnes
 Dan Day
 Bill Doubet
 Ron Masching

Membership

Wayne Litwiller, Co-Chair
 Norm Kocher, Co-Chair
 Mark Baker
 Neal Barnes
 Forrest Davis
 Scott Day
 Carol Kiley

Nomination

Forrest Davis, Chair
 Stan SeEVERS
 Joe Streitmatter

On-Site Waste

Wayne Litwiller, Chair
 John McCoy
 Larry Rhodenbaugh
 Jon SeEVERS
 Jason Winings

Picnic

Neal & Tracey Barnes
 Norm & Mary Jane Kocher

Publicity

Bill Doubet, Chair
 Mark Baker
 Neal Barnes
 Bev Dean
 Wayne Litwiller

Safety

Doug Nicholson, Chair
 Dave Hurst
 Dave Kennedy
 Carol Kiley
 John McCoy
 Jason Winings

Show & Other Income

Neal Barnes, Co-Chair
 Jon SeEVERS, Co-Chair
 Brent Breedlove
 Brian Brooks
 Forrest Davis
 Joe Krupps
 Wayne Litwiller
 John McCoy
 Joe Streitmatter



Application for ASSOCIATE Membership Illinois Land Improvement Contractors Association



P.O. Box 474 · Brimfield, IL 61517 · Phone (309) 446-3700 · Fax: (309) 446-3744 · janet@illica.net

_____ hereby makes application for Associate Membership in the ILLINOIS LAND IMPROVEMENT CONTRACTORS ASSOCIATION, INC., (ILICA) and enclose Two Hundred Ninety-Five Dollars (\$295) as my annual membership dues for the year _____. One dollar (\$1.00) of this amount is for a subscription to the "ILICA News", a bi-monthly newsletter, for one year.

Associate members shall consist of and be limited to persons, firms, corporations, associations or organizations that manufacture or sell equipment, material or services to land improvement contractors.

Send completed application with dues (make check payable to ILICA) to any ILICA member or to the corporate address above.

Individual Name: _____ Email _____

Firm Name: _____

Address: _____

County: _____ ILICA Area Number: _____

City: _____ State: _____ Zip: _____ Phone: _____



New! CONTRACTORS FORUM INFORMATION FOR CONTRACTORS, BY CONTRACTORS



BINDING CONTRACTUAL AGREEMENTS

By: Forrest Davis Construction

There are things everyone should consider before signing any contract, however, when a contractor is entering into a business partnership by signing a sub-contracting document, it is extremely important to understand the details of that contract BEFORE you sign. Regardless of who the general contractor is or the spotless reputation they may have, each party is responsible for insuring that their interests are addressed specifically within that document.



worst. After an attorney reviews the contract and makes recommendations, you can also protect yourself and your company by:

- Keeping a daily diary of all work done, materials ordered or delivered and of any communications with the general contractor and/or other subcontractors.
- Keeping pictorial documentation of the job's progress, including dates and specific locations of the photos
- Having someone else present at all meetings with the general contractor. If that isn't possible, a tape recorder can be helpful in resolving any misunderstandings.



The only way to truly insure the sub-contractors interests are adequately specified in the contract is to have an attorney, who is paid to look out for client's interests, review the legal language it contains. The general contractor will have already done this, insuring his company will have recourse if problems or disputes occur.

The importance of detailed documentation cannot be overstated. Keep a spiral notebook in each vehicle or piece of equipment and take a few minutes to jot down activities as the day goes by. That and a small legal fee up front could save thousands of dollars and months if not years of legal battles, attempting to collect what another company actually owes you!

Since no contractor can foresee the outcome of any job, the best advice is to hope for the best and prepare for the

CALENDAR OF EVENTS

Illinois

Area 3 Member Meeting

Best Western Ashland House - Morton, IL

November 19, 2009

Free Catered Dinner - 6:30 PM

Program: Who Is OSHA? How To Survive An Audit.

2010 ILICA Convention & Member Meeting

President Abraham Lincoln Hotel - Springfield, IL

January 13 - 16, 2010

Drainage System Survey & Design

Henry White Farm - Millstadt, IL

February 2 - 3, 2010

Drainage System Survey & Design

University of Illinois South Farm - Urbana, IL

March 10 -11, 2010

Erosion Control Workshop

University of Illinois South Farm - Urbana, IL

August, 2010 (exact date TBA)

National

2010 LICA Winter Convention

Sheraton Crescent Hotel · Phoenix, AZ

February 16 - 20, 2010

2010 LICA Summer Convention

Holiday Inn City Centre · Peoria, IL

July 13 - 17, 2010

ADVERTISERS INDEX

Central Illinois Ag.	4
Continental Western Group/Heiser Ins.	14
Fratco, Inc.	13
Laserex, Inc.	10
Martin Equipment of Illinois	24
Midwest Auger Aerator.	24
Precision Intakes LLC	24
Prins Insurance Inc	9
Prinsco	22
Roland Machinery Co	2
RWF Bron.	2
Springfield Plastics Inc.	24
Stadel Electronics	10

LADIES COMMITTEE SCHOLARSHIP RAFFLE

\$5.00 Each or 3 for \$10.00



This beautiful quilt depicts several state LICA chapters and is a collaboration involving many LICA ladies hands, time and efforts.

NATIONAL LICA RAFFLE TICKETS - \$25



**2010 LICA
Raffle**

Grand Prize:
\$5,000
2nd Prize:
\$2,500
3rd Prize:
\$1,000
4th Prize:
\$500

Drawing Date: Saturday, February 20, 2010
LICA National Winter Convention, Phoenix, AZ

№ 0201

They're raffling off money this time...\$5000 to the grand prize winner and \$500 for 4th prize.

For \$25 a ticket, you get 4 chances to get way more than your money back!

Contact the ILICA office for your lucky ticket!

SAFETY FEATURE - SNOW REMOVAL USING HEAVY EQUIPMENT

Heavy equipment makes snow removal time- and cost-efficient. These tips will help you complete the job efficiently and safely. Provided by: SAFETY.CAT.COM™



Know your Surroundings

- Always perform a walk around inspection of your machine before operation
- Begin your shift with a walk around of the area you are going to clear
- Know where everything is located; i.e. entries, exits
- Remember that cars and pedestrians have the right away
- Always operate the machine with extreme caution

Discussion Date: _____

Employee Participants

Be Alert

- Be prepared for the cold
- Dress appropriately by wearing layers of warm clothing
- Always test the back-up alarm before moving the machine
- Sound your horn before backing up
- Clean and adjusted your mirrors for best visibility
- Monitor the weather frequently and pay attention to hazardous weather conditions that may develop
- Limit or restrict exposure if temperature is below -17° C (0° F) or the wind chill reaches -30° C (-22° F)
- If working in extreme conditions, maintain constant communications with other crew members to ensure safety
- Use 3 points of contact every time you mount and dismount your machine



Snow Removal

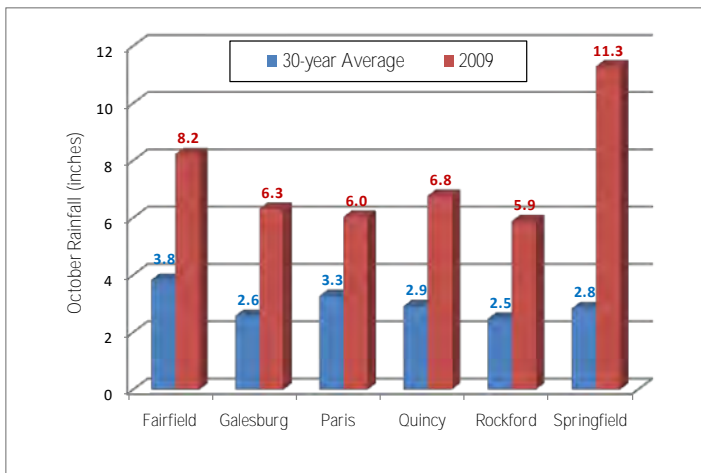
- Keep your machine and equipment off the road whenever possible
- Use signs, reflectors, and high visible clothing to warn oncoming traffic if you are working near a roadway
- Do not push snow across open roads or streets, this could leave large debris in the way of traffic and icy conditions can make braking difficult
- Cold weather can effect your machines, always maintain your machines per the Operation and Maintenance Manual

Copy This Page To Use As Your Weekly Safety Talk!

INSTALLING SUBSURFACE DRAINS UNDER WET CONDITIONS

Source: Richard Cooke

To say that this fall has been a wet one is to state the obvious. The figure below shows a comparison of this year's October rainfall with the average of the 30 previous Octobers, for selected locations in Illinois. In most locations, this October was two or more times as wet as on average. One consequence is that harvest has been delayed, and the period between harvest and the ground becoming frozen, typically a peak tiling period, has been shortened.



For the first time in 15 years working here in Illinois, I have been fielding questions as to whether or not it is okay to install tile under wet conditions. There are just so many ways that I can say, "I don't know," so I used this opportunity to search the literature and to check with other researchers.

The American Society of Agricultural and Biological Engineers (ASABE) standard on the Construction of Subsurface Drains in Humid Areas (ASAE EP481 FEB03) recommends that drains should not be installed under **ponded and saturated land surface conditions** and in **very wet soil profiles** because under these conditions "soils may become fluid and unstable, making installation of drains, bedding, blinding, or envelope/filter material difficult with potential for

not meeting design depth and grade requirements." My interpretation of this is

that tiles should not be installed below the water table. The standard does recommend that, if necessary, a temporary drainage system be installed to lower the water table so that a permanent drainage system can be installed. The standard does not address **wet conditions**, which I define as when the tile is being installed in the capillary fringe, which, for all practical purposes, is within 3 feet of the water table in clay soils, and within 1 foot of the water table in silt loam and loam soils.

Soils are mainly composed of sand, silt, and clay particles, and the physical properties of a soil are largely determined by the proportions of these particles. Researchers have found that there is a distinct break in soil properties when clay content exceeds 30 – 35%. Below this break the clay particles are dispersed in a matrix made up of sand and silt particles, much like the chocolate chips in a chocolate chip cookie. At higher clay content, the sand and silt particles are dispersed in a continuous clay matrix (think brownie). When soils with this continuous clay matrix are worked wet, they tend to smear, creating a slick surface with reduced permeability that restricts water movement into the tile, reducing the efficacy of the drainage system. Thus one should think twice about working a soil with more than 30-35% clay when it is wet. Smearing may be more of a problem with plow installations as compared to trenching.

When soils with high silt content are worked wet, the soil structure breaks down and the silt particles are transported into the tile, reducing the life of the drainage system. Thus one should think twice about working a soil more than 50% silt when it is wet. Soil structure breakdown may be more of a problem with trenching as compared to plow installations.

All this leads to the question, how does a contractor know how much clay or silt is in a soil? One could always have the soil analyzed, but there is another option to get a quick, inexpensive estimate. The NRCS keeps a list of official soil profile descriptions of soils in Illinois and indeed in the entire US. These descriptions can be accessed at:

<http://www2.ftw.nrcs.usda.gov/cgi-bin/osd/osdname.cgi>

The profiles for the soils in Illinois that require drainage can also be found in the Illinois Drainage Guide. The



INSTALLING SUBSURFACE DRAINS UNDER WET CONDITIONS (CONT.)

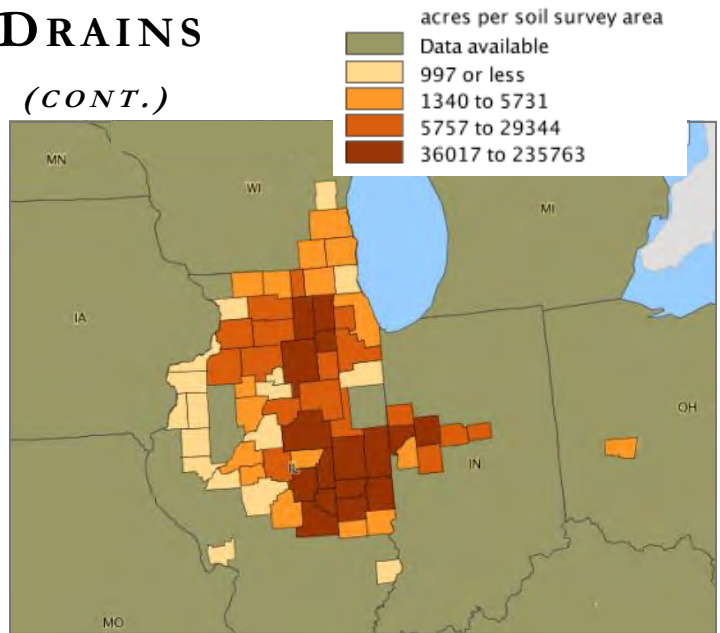
soil profile descriptions include, among other things, the textural classes to which the soil layers belong. This information can be used with the simplified rules in the following table as a first check of the composition of a soil.

Clays have more than 30% clay
Clay loams have 20 - 30% clay
Loams have less than 20% clay
Silty soils have more than 50% silt
Silt loams have more than 50% silt

Take for example, Drummer, Illinois' State Soil, for which official series description of the 3 to 5 feet deep layers are given below, with the soil textural classes highlighted.

Btg2 --81 to 104 cm (32 to 41 inches); gray (N 5/0) silty clay loam ; weak medium prismatic structure parting to weak medium angular blocky; firm; few fine roots; few distinct dark gray (N 4/0) clay films on faces of peds; many medium prominent yellowish brown (10YR 5/4) masses of oxidized iron-manganese in the matrix; neutral; clear wavy boundary. [Combined thickness of the Bg horizon and Btg horizons is 51 to 119 cm (20 to 47 inches).]
2Btg3 --104 to 119 cm (41 to 47 inches); gray (N 5/0) loam ; weak coarse subangular blocky structure; friable; few fine roots; few distinct dark gray (10YR 4/1) clay films on faces of peds; common medium prominent yellowish brown (10YR 5/6) masses of oxidized iron in the matrix; 4 percent fine gravel; neutral; abrupt wavy boundary. [10 to 25 cm (4 to 10 inches) thick]
2Cg --119 to 152 cm (47 to 60 inches); dark gray (10YR 4/1) stratified loam and sandy loam ; massive; friable; many medium prominent olive brown (2.5Y 4/4) masses of oxidized iron-manganese in the matrix; many medium distinct gray (N 5/0) iron depletions in the matrix; slightly alkaline.

The 32 to 41 inches layer is silty, so it has more than 50% silt, and care should be taken when installing tiles in this layer when the soil is wet. It is a clay loam, with 20 – 30% clay, so smearing should not be a problem. The other two layers are



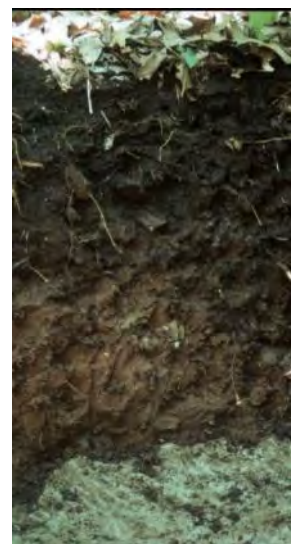
Geographic Extent of the DRUMMER Soil Series

loams with less than 20% clay and less than 50% silt, so they pose less of a problem than the layer above them.

Problems associated with tiling when the ground is too wet are not immediately obvious, but they will show up a few years later. In many instances it is worthwhile spending a few minutes to check the susceptibility of a soil before proceeding. When in doubt, it may be wise to wait a few days, as difficult as that may be in a year as wet as this has been.



Drummer Silty Clay Loam



I would like to thank Gary Sands and Jim Fouss for asking the right questions and pointing me in the right direction to get answers. Gary is from the University of Minnesota and is well known throughout the Midwest. Dr. James Fouss is former Research Leader at the ARS Soil and Water Research Unit at Baton Rouge, Louisiana, and currently Research Leader at the ARS Sugarcane Research Unit at Houma, Louisiana. Jim was instrumental in the development of plastic tiles and the use of the laser-beam automatic grade-control system on high-speed subsurface drainage equipment, and was inducted into the Drainage Hall of Fame in 1990. (I am amazed by how so many of us know so much about the football, basketball, and baseball Halls of Fame, and would be hard pressed to name one Drainage Hall of Fame inductee from Illinois!) Jim assured me that we were not alone, that this October was the wettest one in Louisiana's history.



Application for CONTRACTOR Membership Illinois Land Improvement Contractors Association



P.O. Box 474 • Brimfield, IL 61517 • Phone (309) 446-3700 • Fax: (309) 446-3744 • janet@illica.net

_____ hereby makes application for Active Membership in the ILLINOIS LAND IMPROVEMENT CONTRACTORS ASSOCIATION, INC., (ILICA) and enclose Two Hundred ninety-five Dollars (\$295) as my annual membership dues for the year 2010. One dollar (\$1.00) of this amount is for a subscription to the "ILICA News", a bi-monthly newsletter, for one year.

Dues are \$295

**One hundred sixty dollars (\$170) for Illinois Membership plus
One hundred twenty five dollars (\$125) for National Membership**

Send completed application with dues (make check payable to ILICA) to any ILICA member or to the corporate address above.


Individual Name: _____ Date of Birth: _____
 Spouse: _____ Firm Name: _____
 Address: _____
 County: _____ ILICA Area Number: _____ Sponsor: _____
 City: _____ State: _____ Zip: _____
 Phone: _____ Email Address: _____

Check All Services Provided

- CUI-Cable/Utility Installation DB-Directional Boring DI-Drainage or Irrigation DWM-Drainage Water Mgmt
- EC-Erosion Control EMC-Earthmoving/Land Clearing EXG-Excavating or Grading GR-Gravel/Rock Production
- LL-Land Leveling LS—Landscaping ODW-Open Ditch Work OSW-On Site Waste Treatment PD-Ponds / Dams
- RBD-Road Boring/Drainage R-Reclamation SA-Service Co (Government, Insurance Agency, Dealer) SEP-Septic Systems
- SP-Site Prep SWU-Sewer/Water/Underground Utilities TH-Trucking or Hauling TW-Terraces & Waterways
- WM—Water Management Other: _____



“Do not be afraid, for behold, I bring you good tidings of great joy which will be to all people. For there is born to you this day in the city of David a Savior, who is Christ the Lord. And this will be the sign to you: You will find a Babe wrapped in swaddling cloths, lying in a manger.”



Luke 2: 10 - 12

WATER MANAGEMENT SOLUTIONS








For over 30 years, Prinsco has been developing more than just plastic pipe. We've been developing a reputation that's founded on one simple thing: **INTEGRITY**. It's how we design our products, it's how we treat our customers, it's how we do business.

Look for our **GOLD STRIPE** of quality to ensure your pipe has been engineered with integrity.

800.992.1725 | WWW.PRINSCO.COM

CORPORATE HEADQUARTERS: 1717 16th Street NE | 3rd Floor | Willmar, MN 56201
 LOCATIONS: Fairfax, MN | Prinsburg, MN | Rose Creek, MN | Chatsworth, IL | Fort Dodge, IA | Jesup, IA | Bethany, MO | Fresno, CA



NATIONAL LICA WINTER MEETING - PHOENIX AZ - FEBRUARY 16 - 20, 2010

The next winter national meeting is set for Phoenix Arizona at the Sheraton Crescent Hotel, pictured below. This lovely hotel is already taking reservations for the LICA winter meeting in February. Be sure to mention LICA to get the guaranteed group room rate of \$119.

The convention registration form will be included in the next issue of the *ILICA News* but please contact the Sheraton to insure you get a room at the conference location. The tentative agenda is for a 6:30 am departure on Wednesday for the John Deere proving grounds where contractors will have from

Sheridan Crescent Hotel - (602) 943-8200



9:30 am until noon for hands-on operation of their favorite piece of heavy equipment. Following a Deere sponsored lunch, it's off to the F1 Race Factory for go-kart racing. Other tours are the Phoenix Zoo and Heard Museum the Dolly Steamboat and Greasewood Flats, a historic old west bunkhouse. It's a great time to plan a warm visit to Phoenix while cold wind and snow blow here in Illinois

Educational programs are set for Thursday with committee meetings on Friday and business meetings Saturday. The tentative agenda, tour descriptions and registration form are available on our website, or contact Janet for more information.

2010 LICA SUMMER MEETING - JULY 13 - 17, 2010



It seems like 2009 is flying by and July 2010 is just around the corner. hosting the National LICA summer meeting is a unique opportunity for everyone in ILICA to benefit from networking with contractors from all over the United States.

It's surprising to learn how people from so many different places and backgrounds can have so much in common within the membership of LICA. Illinois has a chance to showcase what makes our chapter active, successful and in a class of its own. If you've never taken the time to travel to a summer national meeting, please consider attending this one, right in your own backyard.

The **ILICA summer member meeting** will also be held one evening during the conference so watch this newsletter for more details on that, coming out soon.

Save the dates, July 13 - 17, 2010 and plan to have lots of fun, learn something, meet new people and share stories with old friends. You'll be glad you did!

- **Holiday Inn City Centre Conference Center**
 - ◆ Riverfront Market on Saturday mornings
 - ◆ Shopping and restaurants close-by
- **Caterpillar Tour and hands on demo**
 - ◆ Caterpillar Factory Tour & Hands-On operation of equipment at Edwards Proving Grounds
 - ◆ Evening Meal & Special Demonstration at Edwards
- **Other Possible Tours**
 - ◆ **University of Illinois** - Arboretum Ponds, McFarland Memorial Bell Tower, Erosion Control Testing Facility - Memorial Stadium & Chancellors Box Tour with Lunch
 - ◆ **Village of Manito Tour** - Irrigation Systems, Fish Hatchery, Woodworking & Pottery Demos
- **Ladies Tours & Activities**
 - ◆ Washington Square, Village of Manito, Guest Speakers, Wine Tasting
- **Paradise Casino** - Dinner & Entertainment



(Left to right) The Peoria city skyline from across the Illinois river; historic downtown Manito; Willett's Winery, also in historic downtown Manito; University of Illinois Memorial Stadium; Denhart's Bakery in beautiful downtown Washington, IL



Springfield Plastics, Inc.

Your Supplier for Quality Drainage Products
 Fast Deliveries & Knowledgeable Staff
 Complete Line of **HEAVIEST FITTINGS**
 on the Market



100% Certified
VIRGIN Resin Only

*Quality You Can Count On,
 The Treatment You Deserve*

800-252-3361 www.spipipe.com

ILICA Supporter for 31 Years

DEERE, MARTIN & TRI-STATE
 THREE NAMES YOU CAN DEPEND ON!

**INDUSTRIAL EQUIPMENT
 SALES, SERVICE, RENTALS
 AT 9 LOCATIONS**

Goodfield, IL 309-965-2502	Springfield, IL 217-528-4347	Tolono, IL 217-485-6755
Rock Island, IL 309-787-6108	Peru, IL 815-224-4711	Cedar Rapids, IA 319-365-0515
Dubuque, IA 563-588-1950	Ashland, MO 573-657-2154	Palmyra, MO 573-769-2274

BEST TOTAL SUPPORT



MARTIN EQUIPMENT OF ILLINOIS, INC.
 MARTIN EQUIPMENT OF IA-IL, INC.
 TRI-STATE CONSTRUCTION EQUIPMENT CO.

Precision Intakes

Full Line of Surface Water Intakes

- 8" & 10" riser with patented 8" & 10" combination Tees.
 Also 6" square & round risers with patented reducing Tee.
- Constructed of heavy-weight, high-density polyethylene.
- Parts highly adjustable & interchangeable with others on the market.
- Orifice plate placed at tee level or at ground level.
- Exclusive locking device on each part.
- User Friendly-Priced effectively.
- Adaptor available to repair old metal or broken intakes.



Why inventory 2, when 1 serves both!



"Dealer Inquires Welcome"

PRECISION INTAKES

Norm & Coretha Rozendaal

2064 Republic Ave West
 Monroe, IA 50170

(800) 932-7611

(641) 259-2651

(641) 259-3218 Fax

"LIFE'S SHORT—DIG FAST!"

BUCKEYE 7200 MAGNUM



- STATE-OF-THE ART DESIGN
- HIGHER PRODUCTION
- BETTER BUILT

MIDWEST AUGER-AERATOR

AUGER BACKFILLERS / WHEEL TRENCHERS
 AUTHORIZED DEALER — BUCKEYE / SPEICHER
 1-800-232-7008

