

# ILICA



# NEWS

## Land Improvement Contractors Of America · Illinois Chapter

*July - August 2010*

Bill Dean  
*Chairman of the Board*

Steve Anderson  
*President*

David Kennedy  
*Vice President*

David Haag  
*First Vice President*

Janet Burtle-Doubet  
*Secretary*

Forrest Davis  
*Treasurer*

### ***Directors***

Brian Brooks  
Dave Hurst

Stuart Anderson  
Joe Streitmatter

Bill Doubet  
Mike Yordy

Eric Layden  
John McCoy

Brent Breedlove  
Forrest Davis

Scott Day  
Jon SeEVERS

Neal Barnes  
John Barttelbort

Tom Beyers  
Norm Kocher

Janet Burtle-Doubet  
*Executive Director*

***Featured  
Contractor***

## DEAN DRAINAGE



**PAST...  
TO  
PRESENT**

*(page 6)*



### **Also Featured Inside**

**ILICA Contractors Welcome at Caterpillar Hog Roast** *(page 2)*  
**On-Site-Waste & Equipment Demonstration** *(page 11)*

### **Upcoming Events:**

**Combined Drainage Workshop**  
Champaign - August 10-12, 2010  
**Erosion Control Workshop** -  
Champaign - August 18-19, 2010  
**2nd Annual Golf Outing** -  
Coyote Creek - Sept. 9, 2010

Return To: Illinois LICA  
P.O. Box 474  
Brimfield, IL 61517



# CONTRACTORS WELCOME AT CATERPILLAR<sup>®</sup>

## PROVING GROUNDS HOG ROAST

### FRIDAY JULY 16TH, 4 - 8 PM



Illinois LICA is proud to host the National LICA Summer conference this July and our tours and activities are intended to showcase the best relationships, partnerships and contractors in this great state. On Tuesday, the University of Illinois welcomes our group and on Wednesday Caterpillar hosts attendees with tours of area CAT plants and hands on demonstrations of their equipment at the proving grounds at Edwards. Half the group will tour plants in the morning and operate equipment in the afternoon, and everyone will gather at Edwards for the Caterpillar sponsored lunch. The groups will switch activities after lunch so those that toured in the morning will have plenty of time to operate equipment in the afternoon.

Attendees must be registered through the National LICA office to attend **this** tour. *(Wayne Litwiller has a special septic and equipment demo set up at his Morton shop on Wednesday evening, and there's more about that on page 11.)*

And Caterpillar isn't stopping there. They have invited conference attendees and ILICA contractors (including spouses and partners) to join them at Edwards on Friday evening for a social hour, a hog roast prepared by Raber Meats, followed by an evening equipment "show" like you have never seen before. And although details are being carefully guarded, the evening promises to be something **you will NOT want to miss.**

If you are registered for the national meetings, you are already included in the count of those being chauffeured out to the proving grounds for the evening. However, ILICA contractors are encouraged to attend with their spouses, without being registered for other activities. **There is no charge for this event but RSVP's to Janet at (309) 446-3700 are required** to provide Caterpillar with an accurate meal count. Details, directions and an event ticket will be issued to registrants which will be used for admittance to the festivities.

**PLEASE JOIN US TO SHOW YOUR APPRECIATION FOR CATERPILLAR'S GENEROUS SUPPORT OF ILICA.**



**ROLAND MACHINERY CO.**  
Komatsu Distributor

## Time for New Equipment? Choose Roland

**Reliable Equipment**

- Manufactured to withstand any environment

**Responsive Service**

- Roland provides service on the job site or in their state-of-the-art facilities



**KOMATSU**

*Call the Roland Location nearest you today!*

<b>Bolingbrook</b> 630-739-7474	<b>Carterville</b> 618-985-3399	<b>Marengo</b> 815-923-4966
<b>Palmyra</b> 573-769-2056	<b>Springfield</b> 217-789-7711	<b>www.rolandmachinery.com</b>



## Agri Drain

CORPORATION

### Your Partners in Water Management

*We offer America's most complete selection of water management products for wetlands, ponds, lakes, controlled drainage, and sub surface irrigation. Along with tools, survey and safety equipment, and many hard to find items.*



**For a FREE catalog or to place an order—Call**  
**1-800-232-4742**

Wetland Water Level Control Structures

P.O. Box 458 • 1462 340th Street • Adair, Iowa 50002  
Fax: 1-800-282-3353 • Email: info@agridrain.com

**www.agridrain.com**

# The ILICA News



**Featured Contractor**

Editor / Advertising Manager  
**Janet Burtle-Doubet**

Chairman of the Board  
**Bill Dean, Mattoon**

President  
**Steve Anderson, Marseilles**

Vice President  
**David Kennedy, Colfax**

1st Vice President  
**David Haag, Kempton**

Secretary  
**Janet Doubet, Williamsfield**

Treasurer  
**Forrest Davis, Manito**

Educational Advisor  
**Professor Richard Cooke**  
University of Illinois

The *ILICA News* is the official publication of Illinois Land Improvement Contractors Association, Inc. at 118 E. Knoxville St., Brimfield, IL 61517. (309) 446-3700.

Subscription price is \$25.00 per year, issued bi-monthly: Jan.-Feb.; Mar.-Apr.; May-June; July-Aug. Sept.-Oct.; Nov.-Dec., and includes one annual directory.

## FEATURES

- ILICA Contractors Welcome at CAT Hog Roast .....2
- Dean Drainage - Past To Present ..... 6
- On-Site-Waste & Equipment Demonstration .....11
- USDA Awards MRBI Funds to Conservation Districts ..... 13
- Bob Frazee Retires From Extension ..... 13
- Drainage & Erosion Control Workshop Agendas .....14
- Drainage & Erosion Control Workshop Registration .....15
- Business & Fun At This Years' Picnic and Member Meeting ..... 22

## COLUMNS

- Board Meeting Notice .....3
- Presidents Message .....4
- 2010 Directory Corrections .....5
- New Members .....5
- Legislative Update: Card Check ..... 9
- Gabbin' With the Gals .....10
- 2010 Committee Members.....16
- Member Application ..... 17
- ILICA Benefits .....18
- Advertisers Index .....19
- Calendar of Events .....19
- University of IL - IISG's Medicine Chest Program ..... 20
- Safety Feature: Check Before You Move..... 21

### The LICA Creed



Land, the foundation of the Nation  
 The basis of all wealth  
 The heritage of the wise  
 The thrifty and prudent  
 The poor man's joy and comfort  
 The producer of food, fiber and fuel  
 The basis of factories  
 The foundation of banks

All that man builds is from the land. We often take it for granted or even abuse it; And yet many, unthinkingly and unknowingly pass the land by. What man does with the land will be the deciding factor of his survival.



### Meeting Notice

**ILICA Regular Board of Directors Meeting**  
**ILICA Office - Brimfield, IL**  
**Saturday - September 4, 2010 - 2 pm**

**Committee Meetings**  
**10 am - 1 pm**

**See map and directions on page 19**



# PRESIDENT'S MESSAGE



Greetings Readers,

The middle of June is here already and with it comes the start of a summer of ILICA events. By the time you are reading this we will have enjoyed the picnic hosted by Veronica and Jon Seevers and getting ready to host the summer national meeting in Peoria. I do hope to see a lot of the group at both. Since we once again seem to be heading into the monsoon season here, I hope you don't get so behind that you feel you can't come due to work considerations. While the health of your business should take consideration over the organization, keep in mind how the organization can keep you ahead of the game. Do make the effort to become better at what you do.

With that thought in mind, I want to put out the call for ideas on what the members would like to have as far as workshops, convention educational topics, and the old basic of contractor forums. With the reading of the comments from past workshops and conventions we get the feeling that there are topics of interest we are not covering. We don't want to talk about just drainage even though it is always well attended. There must be some points of knowledge in earthmoving, landscaping, and general business operation that you want to know better. Let the education committee know and we can build a workshop around it. Now is the time as we move toward the planning for the winter workshops. So when something comes up and you feel not so competent about it, jot it down and send it in. After all this is the reason the education committee exists, we don't meet every board meeting just for the company. And while I am on the topic, just want to remind everyone of the two summer workshops at the U of I, the first in erosion control and the drainage. Personally I

am looking forward to the erosion control. Many of us have something of a personal contribution to that one, us mud loving operators.

I would like to take a moment here to highlight the summer national meeting in Peoria. Not many of the group attend the national meetings and this is a great opportunity to do so being so close relatively speaking, a lot shorter drive than last winter's meeting in Phoenix certainly. It is interesting to talk to those from other regions of the country and learn about our similarities and differences in what we do. It is good to learn what is happening at a national level more intimately, even become involved which doesn't take much more than attending one of the committee meetings. And you might make some new friends you could stop by to see when out on vacation sometime. I do recommend it; I had to go to them as my responsibility as an officer but found that I enjoy them as much as the state functions. You might too, so get down to Peoria this month and check it out.

I will close with a wish that all have a good summer both in workload, safety, and time spent with your families. After all, it gets down to that last one, family, which makes it all worth the effort anyway. Do the maintenance on that just like you do with your machines and you will find out how much better it all runs.

Steve Anderson, President



The family with an old person in it possesses a jewel.

*Chinese saying*

**WATER MANAGEMENT SOLUTIONS**

**PRINSCO**  
ENGINEERED WITH INTEGRITY

For over 30 years, Prinsco has been developing more than just plastic pipe. We've been developing a reputation that's founded on one simple thing: **INTEGRITY**. It's how we design our products, it's how we treat our customers, it's how we do business.

Look for our **GOLD STRIPE** of quality to ensure your pipe has been engineered with integrity.

800.992.1725 | WWW.PRINSCO.COM

CORPORATE HEADQUARTERS: 1717 16th Street NE | 3rd Floor | Willmar, MN 56201  
LOCATIONS: Fairfax, MN | Prinsburg, MN | Rose Creek, MN | Chatsworth, IL | Fort Dodge, IA | Jesup, IA | Bethany, MO | Fresno, CA



## DIRECTORY CORRECTIONS...ALREADY!

Although the 2010 Directory has only been in the hands of our members for a few weeks, the editor has noticed some errors in the contractor listing that require correction before next year's publication. After all, the real purpose of a directory is to provide accurate contact information for members, agencies, and partners and to document important events.

Our directory contains a lot of important information and rest assured, it is the intent of the editor is to get it ALL right and she apologizes for missing that mark with this year's publication...especially to those whose information is incorrect.

If you notice an error in your information, PLEASE contact Janet at (309) 446-3700 or via email at [janet@illica.net](mailto:janet@illica.net) so those can be published in the *ILICA News* as well. All directories being sent from the office at this time have been corrected.

Please make the following changes in your directories.

**Page 26; right hand column:**

Brent Breedlove - P.O. Box should read: 22

**Page 27; right hand column:**

Larry Butcher - Contact phone number should read:  
309-255-0312 / 309-837-3032 (home)

**Page 28; left hand column:**

Forrest Davis - Company Name should read:  
Forrest Davis Excavating, Inc.  
P.O. Box should read: 22

**Page 30; right hand column:**

Carter Hare - Strike email address

**Page 35; left hand column:**

John Lawrence - Strike email address

**Page 41; right hand column:**

Sam Wettstein - Address should read:  
P.O. Box 127, Goodfield, IL 61742

Again, apologies for overlooking these errors and gratitude for your understanding.



## NEW MEMBERS

### Associate Members

- Allu Group, Inc. - Teterboro, NJ
- Alternative Wastewater Systems - Wheaton
- Bobcat of Bloomington - Bloomington
- Consolidated Treatment Systems, Inc. - Franklin, OH
- Ditch Witch Sales, Inc. - Springfield
- Ferguson Waterworks - Decatur
- German Bliss Equipment - East Peoria
- Infiltrator Systems, Inc. - Liberty, MO
- J & L Dock Facilities - Brimfield
- Jet, Inc. - Cleveland, OH
- Orenco Systems, Inc. - Pittsboro, IN
- TriCounty Mower & Tractor., Inc. - Morton

### Active Contractors

- Darrin Fogle  
Blue Springs, Inc. - Carlock
- Ron Woodrum  
Ron Woodrum & Sons - Athens

**Thank You!**

# Featured Contractor DEAN DRAINAGE PAST TO PRESENT



Many of you may know Bill Dean best from his role as ILICA President, 2007 - 2009 and current Chairman of the Board. He sometimes took that role to extremes, as illustrated by this picture taken at the 2009 Convention in Springfield,

but that is just one of the things that make Bill Dean an outstanding and always interesting leader, committee member and friend. But Bill Dean has been a member of ILICA since the first year he started in business, back in 1976. As with most long-time ILICA members, he became involved gradually but understood early on what a benefit the organization was to his growth as a businessman. If you haven't had the pleasure of working on a committee or project with Bill Dean, I highly recommend it...and I guarantee that you'll learn something...whether it's useful or not!

Roger Daily approached Bill about joining ILICA in the fall of 1976 and Bill decided it would be a good way to stay informed as a new businessman. Although he did not start going to board meetings right away, he did attend ILICA conventions and found that he learned more sitting in hallways or having a cup of coffee with other ILICA contractors, discussing their experiences and learning from their mistakes and successes, than he got from attending educational sessions. That alone was enough to keep him coming back until the mid 80's when he agreed to serve as an alternate director. He volunteered at the 1984 Conservation Expo in Monticello, only missing one from that time on, and then, only because of his railroad duties. By the late 1980's he had become very active, participating on committees, attending conventions, board meetings, workshops and ultimately agreeing to become an officer of ILICA.

But this story is about the journey of Dean Drainage, which was started by a young man who had just turned 20 and wasn't sure what he wanted to do with his life, other than stay in an industry related to agriculture. One thing he was sure of is that it was going to be something that did not involve the 24-7 lifestyle required by raising livestock, which is how he had spent his youth, helping his father on their family farm.



While working on his Associates degree in civil engineering from Lakeland College, Bill answered an ad by a contractor looking for help and started doing his surveying after classes finished each day...the old fashioned way, with a dumpy level and targets. That's how he met Don Bareither, who had lots of drainage and tile repair work that needed done on his farm but had no idea how to run a trencher or survey; so Don asked Bill to partner with him after he graduated from Lakeland. Starting out in this industry at a time when all tile was clay or concrete, Bill definitely had not moved away from the hard physical labor he'd grown up with, but he was able to take weekends or at least a Sunday off to enjoy himself and spend time with family. Bill purchased their first trencher, a 6060 Speicher, which he operated from 1976 to 1990 under the business name of Dean & Bareither Drainage. It was the only time in Bill's career that a bank required him to have someone co-sign on an equipment purchase.

The partnership continued with the trencher and a backhoe, doing septic systems, footings and whatever else they could to keep busy when crops were up and tiling stopped. Bill added snow removal to their list of services in 1980 and bought a big snow-blower in 1982, hoping some pre-season advertising in town would help get enough work to pay for it. He parked it on the main thoroughfare and soon after, Illinois Central Railroad (ICRR) contacted them to ask if they would contract to keep the roads leading to their switches clear through the winter. That also led to additional summer work, requiring the purchase of a second backhoe and, often times, the rental of a third. Between cleaning up derailments, some of which were hazardous materials, maintaining crossings,

*(Above)* The current staff of Dean Drainage, standing outside their shop in Mattoon.. Left to right; Clay, Bill, Austin, Gary, and Justin.

*(Below left to right)* Several shots of one of the latest drainage systems installed by Dean



## DEAN DRAINAGE: PAST TO PRESENT *(Cont.)*



clearing ditches and roadsides, cribbing between the ties and replacing rock, they ended up adding a dump truck and trailers to help handle hauling equipment and material in and out for ICRR as well. But regardless of what else they had to do, farm tiling remained the main stay and focus of Dean & Bareither Drainage.

In March of 1990, Bill had the opportunity to buy out his partner and the company became Dean Drainage. Through the '90s, the company was so busy they ended up renting several pieces of equipment. Tiling still made up around 75% of the business income with ICRR making up 20% and only 5% coming from septic work and other excavation. By then Dean Drainage had traded in the old 6060 on a 7160 Speicher and the fleet had grown to include a 3600 Speicher Auger-backfiller, 2 Case Super K backhoes, 2 pickups and a dump truck. In 1997, he bought the company's first excavator, used of course, as was most of the equipment Bill had purchased up to that time. In 1999 he acquired a 2400 Hydra-Max trencher, upgrading it to a 2600 Hydra-Max in 2004 and adding a Komatsu dozer with 6-way blade in 2005. He also upgraded the dump truck and added a semi and lowboy to his fleet. In 2007, he was finally in a position to consider something new and purchased his first brand new piece of equipment, a Case CX210B excavator, however, he says "I only did that because it had 0% interest."

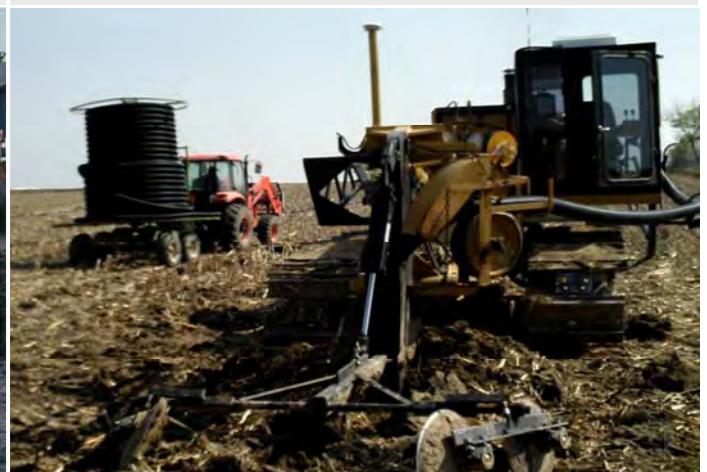
All this work kept Bill and another full time person busy along with occasional part time help. The company had seen many changes to the industry and kept up to date on

them, mainly through ILICA. In 1983, clay and concrete tile was quickly being replaced by plastic, and Dean started out using the small coils which were easier for a smaller operation to handle. In 1986, they went to maxi-rolls, which proved to be as big of a transition as switching from clay to plastic had been. Surveying also changed a lot during this time, and from the targets and dumpy level used in 1976, Bill switched to a manual leveling laser, then moved up to an automatic parallel plane (APP) self leveling laser in 1980. That was replaced with a Trimble 945, and ultimately Dean purchased the Trimble 722 auto level with remote he uses today. For the last 3 years, Dean Drainage has relied on his RTK GPS grade control for their Wolfe plow while using a laser for the trencher.

Another change Bill has experienced during his many years as a land improvement contractor was the move to large drainage systems which became more popular as interstate highways started cutting through prime agricultural land. And although Dean Drainage continues to install the 500 - 1500 ft. tiling jobs that got them started in 1976, 75% of their business today stems from landowners installing larger systems that can be done in phases or sections. The other 25% is made up of waterways, PTO terrace work, random tile lines and both resi-

*(Above, left to right)* Dean Drainage building a retention pond for the City of Mattoon, using a concrete truck to backfill tile run with pea gravel; Dean Drainage fleet lined up following the latest tile system installation.

*(Above, left to right)* Dean Drainage worked alongside ICRR personnel, doing the excavation, bedding and even rail placement for their crossings.



# DEAN DRAINAGE *(Cont.)*



*(Above)* Several pictures from Dean Drainage' past; A 1400 block chute and two shots from the retention pond job done for the city of Mattoon; *(left)* Pulling the Speicher out after the job was done.

*(Left)* Bill Dean doing what he loves! Performing tasks at the backhoe rodeo held during 1993 state convention in Peoria.

dential and commercial drain installations. Dean Drainage has continued to grow, updating the Case backhoes and excavator and adding another semi and lowboy, 2 dump trailers and a spread axle flatbed, 2 one-ton flatbed trucks, a single axle dump truck, tag trailer, Brown Bear auger-backfiller and the Wolfe tile plow he purchased in 2005. He employees 3 full time and 2 part time staff and no longer does a lot of railroad work, as it became so time consuming that it started to feel a lot like raising livestock again.

The large systems displayed in the photos on page 6 and 7 might present additional challenges created by the topography of the acreage being tiled, but some challenges are always part of the process. Weather, working with multiple land owners on a single project, ever changing government regulations affecting everything from maintaining records in the office to installing practices on the ground and employee conflicts will always make some jobs more difficult than others. But the many rewards make it all worthwhile. The satisfaction felt at the end of the day when you can look across the acreage you've improved, knowing that your efforts have left the land better than it was when you started; the fellowship of working hard alongside dedicated employees and the compliments from customers who have become good friends over the years make all the hardships fade in comparison. He has always understood that it's easy to get a new customer but the challenge is getting those repeat customers. Today, 85 – 90% of his work is from repeat customers, indicating how close he has become to landowners in his area. And although he is proud of that accomplishment, he is most proud of building Dean Drainage from the ground up into what it is today, starting out with little more than sheer determination.

But there is more to Bill Dean than just work, which most who know him well can attest to. He has four children; Carla, Kyle, Amber & Austin and two grandchildren; Megan (6) and Logan (3) and makes sure he has time to spend with them after putting in the many hours it takes to keep a business running. His wife, Beverly, also works outside the home as a secretary at the

Williams school in Mattoon, and helps Bill keep a balance between work, family and fun. After losing his father in 1987, his 38 year-old brother in 1988, his 52 year-old sister in 1990 and then his mother in 1996, he vowed to live life to the fullest each day he is given. That attribute is especially evident to all of his ILICA friends.

In closing it seems fitting to mention the many ways in which Bill Dean effects...perhaps inspires, ILICA. While serving as president, he kept board meetings on track but made sure there was time for the open discussion that is the heart of this organization's activities and momentum. Leading by example, Bill also makes sure no one takes themselves too seriously, interjecting humor and sound advice into every discussion. And Bill would be the first to tell you that it still amazes him how so many different business people, with very different ideas about how to get things done, can come together for a conservation expo or any other project, and work together with hardly a rough word. This is just one more example of the ILICA Bill Dean has helped form.



*(Upper left)* Megan and Logan, after grandpa helped them color Easter eggs earlier this year. *(Upper right)* Bill, dressed as a very believable "Greaser" at this years 1950's convention and; in honor of the tropical themed 2009 convention, dressed as one of the homeliest hula girls you'll ever meet.





# LEGISLATIVE UPDATE: CARD CHECK

*Submitted by John Peterson, LICA Director of Government Relations: 14 June 2010*

Since LICA has taken a position opposing the union supported ill-named Employee Free Choice Act or Card Check legislation, I thought a bit of an update on its status might be in order. With the primary elections conducted in many states last week, I'm sure you have been reading predictions in your local papers. I was particularly interested in one primary and how it might tell us something about card check. That was the senatorial primary in Arkansas where incumbent Senator Blanche Lincoln (D-AR) was opposed by AR Lt. Gov. Bill Halter.

I would admit to some bias here. Sen. Lincoln really helped me when I was trying to get the Small Watershed Rehabilitation Act (PL 106-472) passed. She and Sen. Paul Coverdell (R-GA) were my principal champions in the Senate. When Sen. Coverdell passed away unexpectedly in 2000, Sen. Lincoln picked up the ball and ran with it, helping secure passage.

Lincoln opposed card check. Halter favored it. So "big labor" or the unions decided to make Lincoln an example, and they poured an estimated \$10 million into Arkansas in Halter's behalf. They did force a runoff, but when the smoke cleared, Lincoln won fairly comfortably. An exasperated official in the White House told Politico's Ben Smith, "Organized labor just flushed \$10 million of their member's money down the toilet on a pointless exercise (1)."

Since some House members seem more easily intimidated by union threats and campaign money, and card check has twice passed the House. But thanks to opposition by Members from both political parties, it has not won in the Senate. Passing card check is still labor's no. 1 legislative priority.

For the unions, their desperation is a function of two realities. First, only 7% of all private sector employees are union members. Fewer members mean less dues revenue, which in turn reduces how much cash they have to give to politicians. Second, labor finances are in bad shape. The Service Employ-

ees International Union (SEIU) as an example, owes \$156 million, including \$94 million of the Bank of America and other lenders they tapped to help finance their 2008 political contributions.

Card check, which union leaders think would enable them to recruit new members, is critically important to union's future. Unions have spent \$400 million since 2006 seeking to ensure that card check becomes law. The American Federation of State, County and Municipal Employees Gerald McEntee said his union would spend another \$50 million in 2010 trying to protect congressional incumbents who supported their cause. This bad idea is not going away. We must remain watchful and be prepared to communicate our views at critical times.

Reference: 1. *The Examiner, newspaper, June 10, 2010, p2*



*If you have not been receiving John Peterson's emails via the ILICA office, please contact Janet via email at [janet@ilica.net](mailto:janet@ilica.net) or call (309) 446-3700 to verify or add your address to the email distribution group. John keeps us all up to date on what's going on in Washington regarding our industry and he wants YOU to be informed too.*

## SELF PROPELLED DRAINAGE PLOWS



- Contractor inspired innovations
- CAT® diesel engines
- Oscillating track frames & auto-self leveling main frames
- Standard line fittings, hoses and fasteners
- Climate controlled cab
- Available as add-on or self propelled units



visit us on the web at [www.rwfbbron.com](http://www.rwfbbron.com)



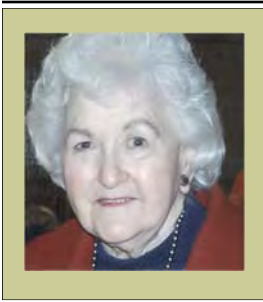
Tel: 1-519-421-0036  
Toll-Free 1-800-263-1060  
Fax: 1-519-421-0028  
Email: [info@rwfbbron.com](mailto:info@rwfbbron.com)

### STADEL ELECTRONICS LASERS

Authorized Service and Sales for Laserplane-Trimble  
Also servicing most other models

**SOLVING YOUR LASER PROBLEMS FOR OVER 30 YEARS**

Call anytime 815-777-0193  
Tom Stadel  
5928 W. Stagecoach Trail  
Galena, IL 61036



## GABBIN' WITH THE GALS...



*Please keep Rose in your prayers as she continues to recover from surgery. The following article was originally published in the 2000 July-August issue of the ILICA News so enjoy another blast from the past with Rambling Rose.*

Here we are once again. Summertime is usually not coffee time for this gal because of the heart; but at the moment it is nice and cool air-conditioned temperature, and a cuppa would probably taste good. It is said that if a person is too warm they should drink something warm, not cold. However, that does not make sense but then some things work that do not "make sense". It is a crazy world at times. Don't you wonder how we survive sometimes? The English have a great custom of "tea time" every afternoon. Complete with little cakes, tidbits, etc. and this all sounds enchanting to the writer. If you can picture that scene in your mind, it would not only be scrumptious, but elegant. Having tea and cakes plus a good visit with the one who furnished the goodies. Sounds Super! The word out is that green tea is a healthy drink, good for anything that ails ya. So yours truly bought green tea and hubby drinks tea so thought it would be good for both of us but we hit a snag. With the medication he is taking he can drink no green tea. Black tea, fine, but not the green stuff. Of course it would be available to me and one of these days, the green stuff and I will enjoy company. Probably without the goodies unless it is not palatable otherwise. We will have to keep a record of what happens. Shall we call it "The Ongoing Bag of Green Tea?"



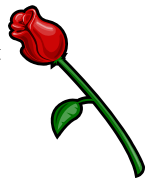
Our gasoline prices are scandalous, aren't they? Maybe by the time this is in print, the price will have gone down. Hope so. It can go down just anytime now and it would not make us angry. Families and vacations are synonymous in the summer, but don't you wonder now and then when you are traveling perhaps a short distance, where all the people in all those cars are going? Willie Nelson didn't write and sing that little ditty "On The Road Again" without knowing what he was talking about, now. Makes one wonder how we got along before interstates. We had some good routes like Route 66 and were in the process of getting more four-lane roads when Eisenhower system came through. Once in awhile if we are not in a big hurry take the "scenic route" just to see small towns, some people and homemade gifts to look at. Breaks the monotony of the concrete.

Summer is also the time for reunions, school, family and whatever. Our Day Reunion took a vote last year to try a

caterer this year as a trial. The destination makes it difficult to take cold or hot dishes plus the time it takes preparing. Guess who voted in favor? My bag these days is definitely not cooking. Speaking of voting, it seems that the chairman of a meeting interrupted debate on an issue to announce that a minibus was blocking the driveway and to ask that it be moved. A voice in the audience called out, "I move the minibus," Another voice said, "I second it." The chairman banged his gavel and said, "The minibus has been moved and seconded. Proceed!" Sounds like a chairman I know. Getting back to reunions, people have wide-range viewpoints when it comes to class reunions. Some who live in the same town will not go while the ones who live far away usually attend. Having a caterer at the family reunion makes more work for the president but is on a trial basis; we can always go back to our "Cook-and-Take" method.

Most would agree that some days we just don't feel like getting out of bed. There was one mother who didn't feel well one Sunday morning so sent her little girl to church with the request that she report to her on the sermon. When she came home she told her mother, "The minister said, "Don't be scared, you will get your quilt." The mother was puzzled as to the meaning so she called her minister for an explanation. He said his text was, "Fear not, thy comforter will come." At least the little girl was listening, and that's a plus in this day and age.

The word for this issue is "reunion." A reunion can be between two people as well as a group. At this time I am anticipating a "reunion" with an old school chum who is coming to the area for an alumni banquet and we will get together while she is here. She is one of those people who keep in contact with their "roots," so to speak, and if she did not care enough to do that most of us who know her would not be as close as we are today. Not in distance as we live half a continent apart. She amazes all of us by the people she remembers and events and "happenings" of long ago. Her life and mine are comparable I that they were completely different. She spent the first 18 years living in the same town, same church, same doctor, etc. Mine was spent moving around almost every year with nothing the same except family. After each of us were married, she is the one who has moved around all the time until retirement, and yours truly has been in one town, one church, one doctor, etc. How unusual life can be at times!



We enjoy the ILICA picnic as a kind of reunion and if any of you have any kind of reunion, may it be enjoyable and fun for all!!

.....Rambling Rose

# ON-SITE-WASTE & EQUIPMENT DEMONSTRATION INCLUDING FREE COOK-OUT DINNER



## ILICA CONTRACTORS: WE NEED YOUR HELP! WEDNESDAY JULY 14TH, 5 - 8 PM

All ILICA contractors are invited and encouraged to bring their spouses to a special demonstration scheduled for Wednesday evening after the LICA summer meeting pre-tour to Caterpillar's Edwards proving grounds. Wayne has secured the support of several on-site-waste suppliers for this HUGE septic and equipment demonstration at his Morton shop. (*see map on page 12*) As you can see below, there will be a wide variety of on-site-waste treatment tanks, infiltrators and other material and equipment used in septic installation and maintenance as well as other excavation projects; lights for working into the night and some items you may not have seen before.

After spending the day being hosted by CAT, attendees can either return to the hotel or go directly to Wayne's Morton shop. Licensed septic contractors from the surrounding counties will be invited, giving the membership committee a chance to introduce them to ILICA. And Wayne would really appreciate the support of our ILICA contractors, even if they are not able to attend other conference events. Several of the exhibitors listed below joined ILICA just to be part of this special night and they would love to meet our contractors. What a great opportunity to thank them and the many long-time members who are also supporting ILICA ... once again.

*See map on page 12*

### Exhibitors

Advanced Drainage Systems	ADS 24 Chamber Infiltrators	German Bliss Equipment	Gehl or Kuboto Track Skid Steer
Allu Group, Inc.	Dirt Grinder Demonstration	Infiltrator Systems	EZflow & chambers gravel less drain field products for conventional and pressure dosing applications. Poly septic tanks & Aquaworx remediation products
Alternative Wastewater Systems	Syber-Aer 500 gallon Batch Plant Demonstration	Jet, Inc.	1500 Series BAT Media Plant, a 500-1500gpd residential wastewater aerobic treatment system
Birkey's Farm Store	Case Mini-Excavator	Leman PreCast Concrete, Inc.	Concrete Tanks
Bobcat of Bloomington	Skid Loader	Martin Equipment of Illinois	John Deere Mini-ex & Skid loader; Info on off-road emission changes & MartinMax total service program
Bradford Supply	Zoeller / Clarus effluent filters and pumps, the new Fusion Anaerobic/aerobic drop in treatment unit Barnes pumps and accessories Tuf-Tite risers, lids, distribution boxes, NDS drainage products, Septic Products alarms, floats, S.J. Rhombus floats, accessories	Orenco Systems, Inc.	Advantex AX20-RT Easypak pump package Entire line of onsite products; pumps, controls, risers, lids
Caterpillar, Inc.	Mini-Excavator and Skid loader	Roland Machinery Co.	PC138 midi-Excavator with reduced tail swing
Central Illinois Ag	Takeuchi Skid Loader	RSC Equipment Rental	Portable Light Tower & Skid Loader Mounted Landscape Rake
CIT Group, Inc	Kenworth Trucks	TriCounty Mower & Tractor	Cub Cadet TANK - new technology Zero turn mower w/steering wheel & extraordinary hillside capabilities
Consolidated Treatment Systems	Multi-Flo & Nayadic Septic Tanks	Springfield Plastics, Inc.	Infiltrators
Ditch Witch Sales, Inc.	Pipe-cable locator w/sewer beacon. Locates sewer/septic lines. Trencher	Vermeer Midwest	Vermeer Vac Yanmar Excavator

# Heiser Insurance & Financial Services

At Continental Western Group, business insurance is what we do; period. Our single focus is to provide our customers with the business insurance coverage they need today and in the future. Continental Western Group is the Illinois **LICA endorsed carrier** for property and casualty insurance. Contact Tim Neuhauser at Heiser Insurance at 1-800-727-9775 or Continental Western Group directly at 1-800-235-2942 for more information.

**CWVG**  
Business Insurance.

*Period!*

**Continental Western Group**

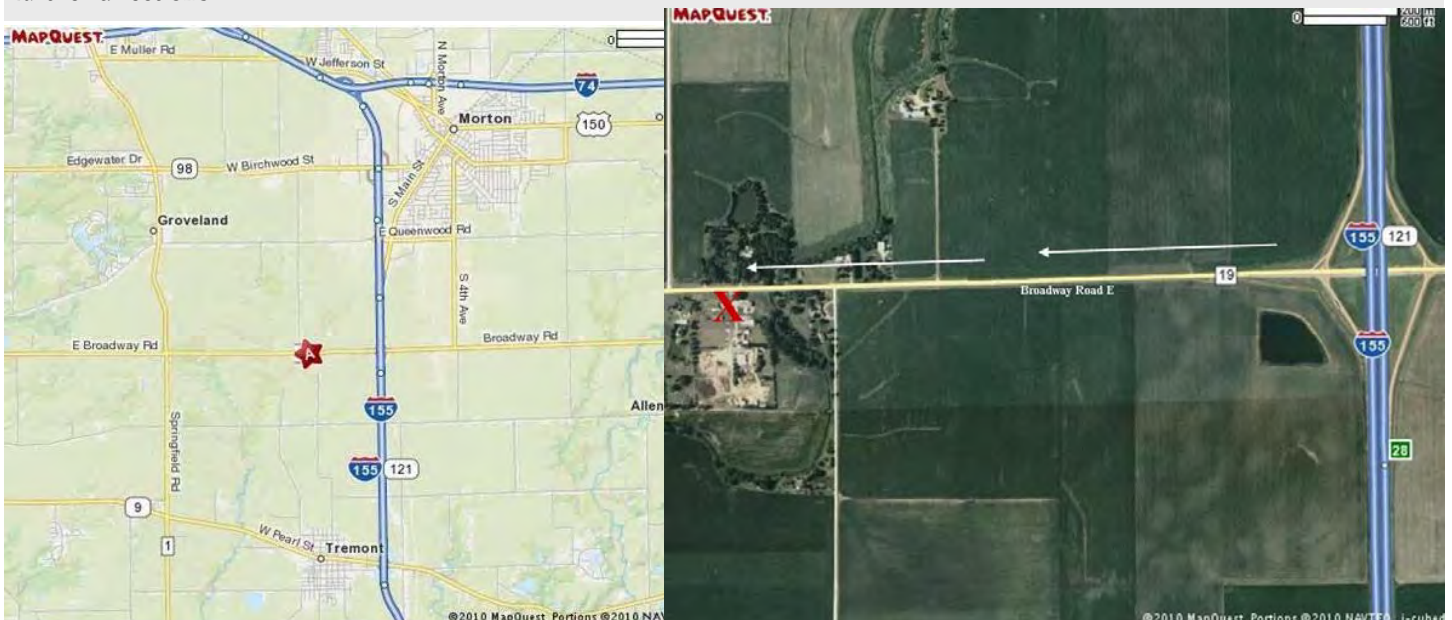
[www.cwgins.com](http://www.cwgins.com)

A BERKLEY COMPANY<sup>SM</sup>

## MAP TO JULY 14TH ON-SITE-WASTE & EQUIPMENT DEMO

Wayne's Morton shop is located at **22899 E Broadway Rd**, just off I-155 south of Morton. From I-74, take the I-155 South exit (Exit 101) toward Lincoln, traveling south approximately 4 miles to Broadway Rd / CR-19, (Exit 28). Take Broadway Rd west for not quite 1 mile. Wayne's shop is on the left (South) side of the road and will have signage at the road to direct guests into the parking area.

See the aerial map below, showing a closer view of the shop location. Please call 309-387-6704 or 309-449-3280 if you need further directions.



# USDA AWARDS SIGNIFICANT PORTION OF MRBI FUNDS TO CONSERVATION DISTRICTS



WASHINGTON, D.C.—June 15, 2010

Today conservation districts in the Mississippi River Basin received more than \$11 million of the \$30 million awarded by the U.S. Department of Agriculture to carry out projects that will help landowners implement conservation practices that prevent, control and trap nutrient runoff from agricultural land. Agriculture Secretary Tom Vilsack announced today the selection of 75 projects in 12 states, and conservation districts are leading or heavily involved in more than half of the selected projects.

“The funding announced today by USDA is great news for conservation districts and their landowner customers,” said Steve Robinson, a producer from Marysville, Ohio, and President of the National Association of Conservation Districts. “Conservation districts are already leaders in improving the health of the Mississippi River Basin, and these additional funds will allow them to further expand their conservation reach and impact.”

Under the Mississippi River Basin Healthy Watersheds Initiative (MRBI), USDA's Natural Resources Conservation Service (NRCS) will provide both technical and financial assistance over a four-year period for projects in Arkansas, Illinois, Indiana, Iowa, Kentucky, Louisiana, Minnesota, Mississippi, Missouri, Ohio, Tennessee and Wisconsin. The MRBI builds on efforts to address nutrient loading in the Mississippi River Basin. Nutrient loading contributes to both local water quality problems and the hypoxic zone in the Gulf of Mexico. MRBI is implemented through the Cooperative Conservation Partnership Initiative, the Wetland Reserve Enhancement Program and

*Taken from NACD's Weekly News Briefs - June 15, 2010*

Conservation Innovation Grants. Partner organizations also contribute additional financial resources.

The funding announced today will help producers implement a system of conservation practices that will control soil erosion, improve soil quality and provide wildlife habitat. “Conservation districts help landowners identify and install practices that achieve environmental benefits every day,” Robinson said. “These awards are an important demonstration of districts’ ability to deliver conservation on a landscape-scale.”

These multi-year watershed projects were selected through a competitive process. Awardees will receive additional funding over the next three fiscal years.

A listing of the projects by state and additional information about the MRBI are available at [www.nrcs.usda.gov/programs/mrbi/mrbi\\_overview.html](http://www.nrcs.usda.gov/programs/mrbi/mrbi_overview.html).



## BOB FRAZEE RETIRES FROM EXTENSION

Anyone who has helped with an ILICA Conservation Expo probably knows Bob Frazee. He was responsible for 24 north-central counties since becoming a University of Illinois Extension educator in 1992 and has a total of 38 years with the Extension. Bob has helped ILICA develop educational scripts and secure tour coverage for many of our conservation expos. His understanding and love of natural resources has made Bob a true partner to our chapter and an advocate for erosion control and water quality.

Bob retired this year on June 1st from the East Peoria

Extension Center and will be sorely missed by those of us who were privileged to work closely with him. And although Bob plans on “staying aware of what’s happening with soil erosion...and keeping in touch with what’s happening out here on the Illinois River,” he is looking forward to spending more time with his four grandchildren, working on gardening and landscaping projects at his home and maybe even getting in a little fishing when he can.

Bob has served Illinois well during his 38 years with Extension and has been a true friend and partner to ILICA. We owe Bob our thanks for his dedication to natural resources and for his help promoting sound land improvement practices.

# DRAINAGE & EROSION WORKSHOP AGENDAS

## Basic Drainage Survey & Design Workshop

**August 10th: 9 am - 5 pm** (lunch & breaks included)

**August 11th: 8:30 am - 4 pm** (lunch & breaks included)

Topics are: **Understanding Latitude/Longitude; Introduction to GPS; Laser Guided Land Leveling; Field Session - Laser surveying; Excel Lat/Long Converter; Field Data Analysis; Drainage Design, Drainage Coefficients; Soil Properties, Illinois Drainage Guide and Resource Mgmt. Mapping Service.**

Please note that laptops will be VERY helpful for the survey and design workshop and that parts of that session will be held outside, so plan to dress accordingly. All sessions qualify for CEU's for the ILICA certification program.

## Advanced Drainage Workshop

**August 12th - 8:30 am - 5 pm** (lunch & breaks included)

The advanced drainage class will include half day sessions on **RTK and AGPS Mapping & Machine control technologies.**

## Erosion Control Workshop

### Fundamental Module

**August 18th: 9 am - 2 pm:** Basics of Erosion & Hydrology, Regulations for SWPP, Sediment & Erosion Control (lunch & breaks included)

**2 - 4 pm:** - Field session at South Farm

**August 19th: 8:30 am - 3 pm:** Design and Maintenance, Inspections, Testing (lunch & breaks included)

The Fundamental Module will include erosion and hydrology, regulations for storm water pollution protection, sediment and erosion control, the design and maintenance of practices and inspections. Although the module can be covered in one long day, the ILICA workshop will provide additional time for the field session and allow more time for discussion during the classroom portion.

*ILICA Certification will be given at the conclusion of both workshops, August 12th and August 19th, for any interested contractors.*




**FRATCO... Now serving Indiana AND Illinois!**

**With more than 86 years of supplying quality drainage products, you can count on FRATCO!**

**FRATCO DELIVERS** - We maintain a full inventory of drainage products ready for delivery, so we always have what you want, when you want it. Our extensive manufacturing capabilities ensure that your order is filled promptly and accurately.



**FRATCO IS FRIENDLY** - Our friendly staff is available to answer any questions about our products and will provide unparalleled delivery and flexibility. Call us any time for answers to your questions about manufacturing or installing HDPE pipe and fittings!



**FRATCO PRODUCES** - Our products include:

- 2" - 24" HDPE Single Wall Pipe
- 4" - 60" HDPE Smooth-Corr Pipe
- Water Tight and Silt Tight Joints
- Full line of HDPE Fittings and Accessories
- Custom Fabricated HDPE Fittings
- Septic Tanks, Distribution Boxes, and PVC Pipe



**FRATCO NOW SERVES ILLINOIS**

- This Spring, Fratco acquired Eastern IL Clay Company. We look forward to introducing new customers to our unparalleled quality and friendly service!



**FRATCO INC.**

PO BOX 368	PO Box 657
Francesville, IN 47946	St. Anne, IL 60964
PH: 800-854-7120	PH: 800-475-8144
F: 219-567-9296	F: 815-427-8150

[www.fratco.com](http://www.fratco.com) / [office@fratco.com](mailto:office@fratco.com)





**QUALITY - STANDARDS MEAN SOMETHING!** That's why every inch of FRATCO pipe that bears ASTM and AASHTO markings is manufactured from 100% virgin HDPE that is in-house tested for the full performance criteria that these standards require. Our philosophy is that pipe installed in the field is no less important than pipe installed under a highway.



# DRAINAGE AND EROSION WORKSHOPS REGISTRATION



## August 10th & 11th - Basic Drainage Survey & Design / August 12th - Advanced Drainage

	ILICA Members:	Non-Members
Survey & Design	\$100	\$125
Advanced Drainage	\$75	\$100
Combined (3 days)	\$150	\$200

### Fees After July 10, 2010

	ILICA Members:	Non-Members
Survey & Design	\$125	\$175
Advanced Drainage	\$100	\$150
Combined (3 days)	\$200	\$250

### Optional Certification Review & Testing (Aug. 12th) (2 year certification period)

	ILICA Members:	Non-Members
Certification	\$100	\$500
Bi-Annual Re-Cert	\$50	\$100

No fee for re-testing or additional classification testing

## August 18th & 19th IDOT Level Erosion Control Workshop



	ILICA Members:	Non-Members
Erosion Control	\$100	\$125

### Fees After July 20, 2010

	ILICA Members:	Non-Members
Erosion Control	\$125	\$175

### Optional Certification Review & Testing (Aug. 19th) (2 year certification period)

	ILICA Members:	Non-Members
Certification	\$100	\$500
Bi-Annual Re-Cert	\$50	\$100

No fee for re-testing or additional classification testing

## Both workshops are set for the I-Hotel & Conference Center - 190 S. First St., Champaign.

All drainage workshop attendees should bring laptops if at all possible and laser receivers for the Survey & Design segment. There will be field sessions involved in all workshops so please bring boots and/or hats & sunscreen as weather dictates. Attendees will be shuttled to the South Farm for field sessions during the Erosion Control workshop. **The ILICA office is handling the rooming list for those interested in staying at the I-Hotel.** Please contact Janet at (309) 446-3700 or via email at janet@illica.net to be included in our block.

**Yes, I will attend the following August Workshop(s) and/or Certification Review and Testing program.**

(Mark all choices of interest. See pricing listed above)

- |                                                            |                                                                   |
|------------------------------------------------------------|-------------------------------------------------------------------|
| <input type="checkbox"/> Survey & Design Drainage (2 days) | <input type="checkbox"/> Erosion Control Workshop (2 days)        |
| <input type="checkbox"/> Advanced Drainage (1 day)         | <input type="checkbox"/> ILICA Certification (see schedule above) |

Name: \_\_\_\_\_ Area #: \_\_\_\_\_

Address: \_\_\_\_\_ City, State \_\_\_\_\_

Company Name: \_\_\_\_\_ Phone # \_\_\_\_\_

Additional Attendees \_\_\_\_\_, \_\_\_\_\_, \_\_\_\_\_

**Pre-Registration fees must be received in our office by deadlines stated above.**

Mail to: ILICA - P.O. Box 474 - Brimfield, IL 61517 or Fax: (309) 446-3744 Total Enclosed: \$ \_\_\_\_\_

**Associate**

Corey Getz - ADS, Chair  
 Mark Baker - Springfield Plastics  
 Mike Bierbaum - Clark Co. Supply  
 Dave Mosier - ADS  
 Chad Nicholson - Eastern IL Clay  
 John Pogge - Prinsco, Inc.

**Auditing**

Forrest Davis, Chair  
 Steve Anderson  
 Ron Masching

**Awards**

Bill & Janet Doubet, Chair  
 Brent & Tracy Breedlove  
 Rose Day  
 Bill & Bev Dean

**Budget**

David Kennedy, Chair  
 Forrest Davis  
 Dan Day  
 Bill Dean  
 Wayne Litwiller

**By-Laws**

Stuart Anderson, Chair  
 Bill Doubet  
 Dave Hurst  
 Stan SeEVERS  
 Joe Streitmatter

**Certification**

Dave Hurst, Chair  
 Forrest Davis  
 Wayne Litwiller  
 Ron Masching  
 Prof. Kent Mitchell, U of I  
 Stan SeEVERS

**Certification Board**

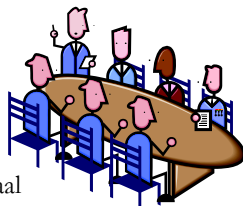
Dave Hurst, Chair  
 Forrest Davis  
 Dave Kennedy  
 Wayne Litwiller  
 Ron Masching

**Convention**

Kristin Kutemeier, Chair  
 Brent & Tracy Breedlove  
 Bill & Bev Dean  
 Greg & Jennifer Furkin  
 David & Lori Kennedy  
 Joe & Jackie Streitmatter

**Devotions**

Jean Davis, Chair  
 Steve Anderson  
 Norm & Coretha Rozendaal

**Education**

Brent Breedlove, Chair  
 Neal Barnes  
 Prof. Richard Cooke—U of I  
 Bob Grothaus  
 Ron Masching  
 Mike Yordy

**Executive**

Steve Anderson, Chair  
 Janet Burtle-Doubet  
 Forrest Davis  
 Bill Dean  
 David Haag  
 David Kennedy

**Golf Outing**

Wayne Litwiller, Chair  
 Jerry Biuso  
 Janet Burtle-Doubet  
 Forrest Davis

**Headquarters**

Dan Day, Chair  
 Steve Anderson  
 Mark Baker  
 Dale Collinson  
 Forrest Davis  
 David Haag

**Industrial & Business Relations**

Wayne Litwiller, Chair  
 Charlie Adams  
 Dale Collinson  
 Dan Day  
 Bill Dean  
 Bill Doubet

**Insurance**

Dave Hurst, Chair  
 Charlie Adams  
 Dan Day  
 Stan SeEVERS

**Ladies**

Janice Litwiller, Chair  
 Jean Davis  
 Bev Dean  
 Cathy Masching  
 Jackie Streitmatter

**Legislative**

Steve Anderson, Chair  
 Neal Barnes  
 Lee Bunting  
 Dale Collinson  
 Bill Doubet  
 Dave Hurst  
 Carol Kiley  
 Norm Kocher  
 Joe Streitmatter

**Long Term Planning**

Steve Anderson, Chair  
 Stuart Anderson  
 Neal Barnes  
 Dan Day  
 Bill Doubet  
 Ron Masching

**Membership**

Wayne Litwiller, Co-Chair  
 Norm Kocher, Co-Chair  
 Mark Baker  
 Neal Barnes  
 Forrest Davis  
 Scott Day  
 Carol Kiley

**Nomination**

Forrest Davis, Chair  
 Stan SeEVERS  
 Joe Streitmatter

**On-Site Waste**

Wayne Litwiller, Chair  
 John McCoy  
 Larry Rhodenbaugh  
 Jon SeEVERS  
 Jason Winings

**Picnic**

Neal & Tracey Barnes  
 Norm & Mary Jane Kocher

**Publicity**

Bill Doubet, Chair  
 Mark Baker  
 Neal Barnes  
 Bev Dean  
 Wayne Litwiller

**Safety**

Doug Nicholson, Chair  
 Brent Breedlove  
 Dave Hurst  
 Dave Kennedy  
 Carol Kiley  
 John McCoy  
 Jason Winings

**Show & Other Income**

Dave Kennedy, Co-Chair  
 Jon SeEVERS, Co-Chair  
 Brent Breedlove  
 Brian Brooks  
 Forrest Davis  
 Joe Krupps  
 Wayne Litwiller  
 John McCoy  
 Joe Streitmatter





# MEMBERSHIP APPLICATION

## Illinois Land Improvement Contractors Association, Inc.

118 E. Knoxville · PO Box 474 · Brimfield, IL 61517  
(309) 446-3700 · Fax: (309) 446-3744 · Email: janet@illica.net

\_\_\_\_\_ hereby makes application for Active Membership in the **ILLINOIS LAND IMPROVEMENT CONTRACTORS ASSOCIATION, INC.**, (ILICA) and enclose \$\_\_\_\_\_ as my annual membership dues for the year \_\_\_\_\_. One dollar (\$1.00), which is included in the \$295 dues, is for a one (1) year subscription to the "ILICA News", a bi-monthly newsletter.

Send completed application with payment (make check payable to ILICA) to the corporate address above or give to any ILICA member to forward.

Name: \_\_\_\_\_ DOB:(*required for active members only*)\_\_\_\_\_

Firm Name: \_\_\_\_\_

Spouse: \_\_\_\_\_ County: \_\_\_\_\_

Address: \_\_\_\_\_

City: \_\_\_\_\_ State: \_\_\_\_\_ Zip: \_\_\_\_\_

Email : \_\_\_\_\_ Sponsor: \_\_\_\_\_

Phone: \_\_\_\_\_ Cell Phone: \_\_\_\_\_ Fax: \_\_\_\_\_

### Check All Services Provided

- |                                 |                                                                           |
|---------------------------------|---------------------------------------------------------------------------|
| CUI - Cable/Utility Inst.       | OSW—On Site Waste Treatment                                               |
| DB - Directional Boring         | PD - Ponds / Dams                                                         |
| DI - Drainage/Irrigation        | RBD - Road Boring/Drainage                                                |
| DWM - Drainage Water Mgmt       | R - Reclamation                                                           |
| EC - Erosion Control            | SA - Dealer/Service Co./Government Agency/<br>Consultant/Insurance Agency |
| EMC - Earthmoving/Land Clearing | SP - Site Prep                                                            |
| EXG - Excavating/Grading        | SWU - Sewer/Water/Underground Utilities                                   |
| GR - Gravel/ Rock Production    | TH - Trucking / Hauling                                                   |
| LL - Land Leveling              | TW - Terraces / Waterways                                                 |
| LS - Landscaping                | WM - Water Management                                                     |
| ODW - Open Ditch Leveling       | Other: _____                                                              |

**Active Contractor Membership - \$295** (*One hundred seventy dollars (\$170) for Illinois Membership plus One hundred twenty five dollars (\$125) for National Membership*)

(Active members are individuals engaged in the business of entering into contracts for performing work that will result in soil, land, natural resource conservation or rehabilitation, water conservation, control and prevention of soil erosion, depletion and misuse of natural resources and soil and water pollution and contamination.)

**Associate Membership - \$295** (Associate members are those businesses that manufacture or sell equipment, materials or services used by active members)

**Affiliate Membership - \$85** (Affiliate members are individuals employed by an active member in the business that makes the active member eligible for membership)

# ILLINOIS LICA BENEFITS



## Education

Illinois LICA provides many educational opportunities throughout the year with sessions at our annual convention, at Area 3 and 8 member meetings and at workshops each year. Area 5 director, Brent Breedlove, is in the planning stage of beginning meetings in his area with other areas following suit.

Illinois LICA state convention, which includes exhibits by our associate members, is scheduled each January in various locations around the state. First year contractor members will receive 1 free full participation registration to the convention, which includes all meals during the 3 day event. Several educational sessions are scheduled during the convention along with many social and networking opportunities.



Workshops have been offered annually, however, there is an expanded schedule this year, including two survey and design drainage workshops and an erosion control workshop in August. OSHA 10 Hour certification will be offered every other year as well as Certified Flagger training available as often as demand warrants.



## Continental Western Group/LICA Insurance Program

Continental Western Group has designed a comprehensive LICA Insurance program, blending Property, Inland Marine, Crime, General Liability & Business Auto coverage into a simple and convenient policy. It offers standard coverage for many items specific to the Land Improvement industry, providing outstanding coverage at a very competitive rate, even before the Safety Group Dividend potential return. Although the dividend is not guaranteed, the return rate has been between 3.5% and 12% most years.

## ILICA News & Annual Directory

The ILICA News is a bi-monthly publication distributed to all Illinois LICA members that contains 24 pages of information relative to the land improvement industry and notice of activities and upcoming events. The annual directory of members is published each April and distributed to all members and many IEPA, NRCS and SWCD offices in Illinois.



## Legislative Representation

ILICA has an active Legislative Committee that monitors legislation that impacts small business in Illinois. They participate in the Agricultural Legislative Roundtable caucus and many other events then disseminate that information to ILICA members. They are currently working on a system to streamline this process for more effective communication.

ILICA not only maintains its own relationship with legislative contacts, Illinois along with other state chapters have a combined voice in Washington DC through national LICA. Each year, representation from ILICA travels to Washington DC along with several other chapters, to lobby their congressmen and women regarding legislation that affects land improvement contractors.

## National Benefits

A LICA membership entitles contractors to many benefits that can give their company a competitive edge. Listed below are just a few:



- National LICA Contractor Magazine
- LICA Contractor Safety Management Plan
- LICA Mini-Med Basic Healthcare Program
- LICA PerksCard Program
- LICA Transamerica Retirement Program
- National LICA Winter Convention and Summer Meeting
- LICA 6-Pack Health Care Savings Card Program
- LICA FlexSystem
- LICA BizPlan
- Term Life-Insurance

Each active Contractor member receives a complimentary \$5,000 Term-Life policy and \$5,000 Accidental Death & Dismemberment policy.

# CALENDAR OF EVENTS

## Illinois

**Septic & Equipment Demonstration**  
**Wayne Litwiller's Morton Shop**  
July 14, 2010 - 5 - 8 pm

**Basic Survey & Design Drainage Workshop**  
**I-Hotel & Conference Center - Urbana, IL**  
August 10 - 11, 2010

**Advanced Drainage Workshop**  
**I-Hotel & Conference Center - Urbana, IL**  
August 12, 2010

**Erosion Control Workshop**  
**I-Hotel & Conference Center - Urbana, IL**  
August 18 - 19, 2010

**2nd Annual Area 3 Golf Outing**  
**Coyote Creek Golf Club - Bartonville, IL**  
September 9, 2010  
1:00 pm Shotgun Start

**Area Member Meeting Schedule Resumes**  
November 9, 10, 11, 2010  
Locations TBA

**2011 Annual Member Meeting & Convention**  
**Doubletree Hotel - Bloomington, IL**  
January 13 - 15, 2011

## National

**2010 LICA Summer Convention**  
**Holiday Inn City Centre Peoria, IL**  
July 13 - 17, 2010

**2011 LICA Winter Convention**  
*in conjunction with:*  
**ConEx / ConAgg**  
March 20 - 22, 2011  
**Las Vegas, Nevada**

# ADVERTISERS INDEX

Agri-Drain Corp .....	2
Continental Western Group/Heiser Ins. ....	12
Fratco, Inc. ....	14
Martin Equipment of Illinois .....	24
Midwest Auger Aerator. ....	24
Precision Intakes LLC .....	24
Prins Insurance Inc. ....	23
Prinsco .....	4
Roland Machinery Co .....	2
RWF Bron .....	9
Springfield Plastics Inc. ....	24
Stadel Electronics .....	9



### ILICA Office, Brimfield Illinois

**From West:** Take the Route 78 exit from I-74 to Kewanee and Canton and turn North from the exit ramp. Turn right or east onto Route 150 at Akron Services grain storage facility. Follow Route 150 into Brimfield and the ILICA office is on your right.

**From East:** Take the Brimfield exit from I-74 and turn North from the exit ramp. Turn left or West onto Route 150 at the stop sign. Follow Route 150 into Brimfield and the ILICA office on is your left.



## IISG'S MEDICINE CHEST PROVIDES REMEDIES FOR IMPROPER MEDICATION DISPOSAL

Source: University of Illinois Extension website; [web.extension.illinois.edu/state/natres.html](http://web.extension.illinois.edu/state/natres.html)



URBANA - In most homes, children are kept out of medicine cabinets to protect them from the dangers of chemicals in medications. Illinois-Indiana Sea Grant's (IISG) latest product, *The Medicine Chest*, invites high school students to metaphorically open up those doors and investigate what makes those chemicals harmful to people, pets, and the environment when improperly disposed.

"The new curriculum collection gives educators an instructional tool to create an innovative service-learning experience for their students, while tackling an important environmental and human health concern," said IISG Associate Director for Education Robin Goettel, who, along with Terri Halesy, IISG education specialist, helped design this resource. "Through involvement in this project, students serve as agents for change, educating their communities about action steps they can take to reduce harm to aquatic ecosystems from improper disposal of unwanted medicines."

This resource is one of a handful of measures IISG is taking in response to the growing problem of pharmaceuticals ending up in local waterways. For example, a 2008 Associate Press investigation found low levels of pharmaceuticals in the drinking water supplies of 24 major metropolitan areas.

When medicines expire, people often flush them down the toilet, but wastewater treatment plants are not designed to treat these chemicals. In addition to showing up in drinking water, medications can harm fish and aquatic wildlife. On the other hand, disposing of medicines in the trash can risk leakage from poorly-designed landfills.

One way the curriculum seeks to get students involved in their communities is through active involvement with the Prescription Pill and Drug Disposal Program (P<sup>2</sup>D<sup>2</sup>)—a multi-disciplinary, service-learning approach to the issue of unsafe disposal. "The P<sup>2</sup>D<sup>2</sup> Program was the impetus and serves as the centerpiece for this curriculum collection," Goettel said.

Created by Pontiac High School ecology teacher Paul Ritter, the program encourages teachers from various subject to involve their students with this issue and provides lesson plans for environmental science, civics, music, art, language arts, and foreign language.



According to Goettel, a wide range of student projects—billboards, eco-poems, songs, collection boxes, artwork, and student presentations—have sparked community interest, understanding, and action. The P<sup>2</sup>D<sup>2</sup> program also encourages and provides tips for building community partnerships, organizing festivals, and planning collection events.

Many of these projects are described in *The Medicine Chest*, which also provides useful supplemental resources, including science-based research, fact sheets, and classroom activities.

By rallying students for the cause, Goettel hopes to address another problem—prescription drug abuse. According to the Drug Enforcement Agency, nearly one out of ten high school seniors admits to abusing powerful prescription painkillers and 40 percent of teens and an almost equal number of their parents [falsely] think abusing prescription painkillers is safer than abusing 'street' drugs.

"Through this multi-faceted, community-based service-learning program, youth will be empowered to take action that will serve as a catalyst to help reduce teenage drug abuse," Goettel said. "The students have the capability to learn the content and put their knowledge into community action."

For more information or to download *The Medicine Chest*, visit <http://www.iisgcp.org/newsroom/archive/041510.html>

To obtain IISG's unwanted medicine toolkit—*Disposal of Unwanted Medicines: A Resource for Action in Your Community*—which is designed to help communities establish collection events, visit <http://www.iisgcp.org/unwantedmeds/index.html>.





# SAFETY FEATURE: CHECK BEFORE YOU MOVE!

You've probably seen the havoc heavy construction equipment can cause. Maybe you know of someone who was killed or badly injured by being run over or backed over. And you may even have seen a parked car that had been crushed. Usually, this kind of accident happens because someone fails to take commonsense precautions.

### BIGGER AND FASTER TODAY

Years ago, heavy equipment was big, bulky, and slow moving. The operator could see well in all directions. Today, this equipment is heavy, large, and fast moving. Often the operator's field of vision is restricted. So now the equipment operator has to be more alert than he did a few years ago to make sure he doesn't injure or kill a fellow worker.



### TAKE A WALK BEFORE YOU RIDE

Before you climb aboard a piece of heavy equipment, walk completely around it. Then you'll be able to see any persons or obstacles in the vicinity. And you'll be able to warn any one who is in the way that you are getting ready to move the equipment. With all the noise, it is sometimes difficult to hear one more rig startup or start to move. If mechanics have been working on a rig, be sure they have finished their work and all have left. Make sure they haven't left tools or equipment behind either.

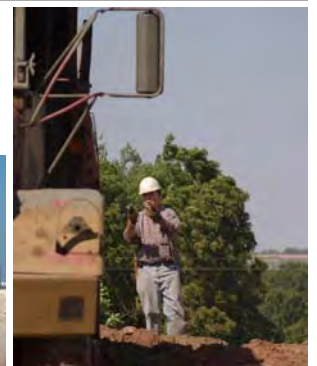


It's always necessary to have someone signal for you when you're backing equipment or trucks in places where people and equipment are working. We don't have many minor accidents involving heavy construction equipment; most of them result in serious injury or death.

Admittedly, it takes a few seconds to walk around the machine or truck before you board it. And it takes a few seconds to have someone signal you when you back such equipment. But this time is well spent; especially if it saves someone's life. It also saves the many sleepless nights you would suffer if you were responsible for injuring or killing a fellow worker.

### A FEW SECONDS CAN SAVE A LIFE

If you operate heavy equipment, remember that those working around it are at your mercy. Before starting or backing the vehicle, take the few seconds it requires to be sure that no one is in danger. You owe it to those you work with.



Discussion Date: \_\_\_\_\_

### Employee Participants

\_\_\_\_\_

\_\_\_\_\_

\_\_\_\_\_

\_\_\_\_\_

\_\_\_\_\_

\_\_\_\_\_

\_\_\_\_\_

\_\_\_\_\_

\_\_\_\_\_

\_\_\_\_\_

\_\_\_\_\_

\_\_\_\_\_

\_\_\_\_\_

\_\_\_\_\_

\_\_\_\_\_

\_\_\_\_\_

\_\_\_\_\_

\_\_\_\_\_

\_\_\_\_\_

\_\_\_\_\_

\_\_\_\_\_

## BUSINESS & FUN MARK THIS YEAR'S SUMMER PICNIC AND MEMBER MEETING

### "THANKS" TO OUR SPONSORS

ADS & C.D. Getz Corp  
Springfield Plastics, Inc.  
Agri-Drain Corporation

June 26th was a beautiful day for the ILICA picnic and tours of Allerton Park and the Monticello Railway Museum were scheduled for the morning with the business meetings and fun activities scheduled following lunch. The park was beautiful but the Monticello Railway Museum was the hit of the morning tours. Several people took a short trip on the train that runs from Nelson's Crossing Depot into Monticello while others spent time hearing about the 100 year old steam engine that is being restored and will run on the track later this year. There are several restored cars close to the depot that are also open for walk through tours. The dining car is in process of being brought back to it's original splendor and the office car, whose sitting room is shown below, is equipped



(Above, left to right) Brent Breedlove, Jonathon Manuel, Terry Lieb and Steve Anderson enjoy the shade while discussing the potential 2011 Conservation Expo site at the Lieb & Hertz farms near Monticello; the Seevers in-ground pool was VERY popular after the board & member meetings concluded; Dan & Sylvia Day try their luck at the couples golf cart "blind obstacle course" set up in the Seevers back yard. (left) Restored Office Car #6, considered the "corporate jet" of the 1930's; Stan Rankin one of the many volunteers that keep the Monticello Railway Museum running, standing in front of the 100 year old steam engine currently being restored.

with three bedrooms, one of which boasts an in room shower, dining room for 8, kitchen and pantry.

Stan Seevers volunteered to be the picnic grill chef and secured a good friend to assist him with that process. After the morning tours, a short visit to the proposed 2011 Conservation Expo sight on the Terry Lieb and Joel Hertz farms just outside Monticello. Jonathon Manuel from the Piatt County SWCD office along with Richard Cooke, joined the group at the site to discuss the proposed practices and a tentative timeline for completion of plans and possible follow up meetings. Soon, it was time for lunch and everyone headed back to the Seevers home for delicious meal.

Jon, Veronica, Stan and Miriam took charge of the event and coordinated every detail of the day. The pool was open early for anyone that didn't arrive in time to catch the bus and everyone enjoyed the meal, which included buffalo burgers donated by Lieb Farms. There were several side dishes to accompany the home grilled chicken, pork chops and hot

dogs and Veronica's famous home-made ice-cream sandwiches and ice cream really hit the spot on a warm afternoon. It didn't take long for the line to form for those treats!

The board and member meeting was held on the shaded patio while the youngsters continued to enjoy the pool. With the summer national meetings coming up in two weeks, which is also when Wayne's septic and equipment demo is scheduled, two workshops in early August, and golf outing on September 9th, there was plenty of business to address during the meetings but the day wasn't over even then.

Jon had canopies set up in the back yard to provide shade for those watching the couples golf cart obstacle course competition. The driver, wearing a blindfold, was instructed by their spouse how to negotiate the course, driving between the series of flags and then backing up into a parking cone. The main challenge seemed to be keeping track of which way is "left" and which way is "right." Corey & Whitney Getz were the winners with the best time.

# SUMMER PICNIC AND MEMBER MEETING (CONT.)



(Above, left to right) Stan Rankin gives some history on "Office Car #6" before taking the group through a walking tour; Syl Keller makes arrangements with the conductor for a private car for our group's trip; the diesel engine currently being used for the train rides; some of our group waving as the train departs for the quick ride to downtown Monticello.

## LICA RECOMMENDED INSURANCE PROGRAM

Continental Western Group®



How does your policy stack up?



- POLICIES DESIGNED SPECIFICALLY FOR DIRT MOVERS

- A SAFETY GROUP PROGRAM, OVER \$1,000,000 PAID BACK TO LICA CONTRACTORS IN THE FORM OF A DIVIDEND



FOR MORE INFORMATION, CONTACT PRINS INSURANCE BY CALLING 1-800-831-8545 OR EMAILING BRUCE MOSIER AT BMOSIER@PRINSINS.COM



# Springfield Plastics, Inc.

Your Supplier for Quality Drainage Products  
Fast Deliveries & Knowledgeable Staff  
Complete Line of **HEAVIEST FITTINGS**  
on the Market



100% Certified  
**VIRGIN** Resin Only

*Quality You Can Count On,  
The Treatment You Deserve*

800-252-3361 [www.spipe.com](http://www.spipe.com)

ILICA Supporter for 31 Years

## DEERE, MARTIN & TRI-STATE THREE NAMES YOU CAN DEPEND ON!

### INDUSTRIAL EQUIPMENT SALES, SERVICE, RENTALS AT 9 LOCATIONS

Goodfield, IL 309-965-2502	Springfield, IL 217-528-4347	Tolono, IL 217-485-6755
Rock Island, IL 309-787-6108	Peru, IL 815-224-4711	Cedar Rapids, IA 319-365-0515
Dubuque, IA 563-588-1950	Ashland, MO 573-657-2154	Palmyra, MO 573-769-2274

### BEST TOTAL SUPPORT

# MARTIN

# TRI-STATE

CONSTRUCTION EQUIPMENT CO.

MARTIN EQUIPMENT OF ILLINOIS, INC.  
MARTIN EQUIPMENT OF IA-IL, INC.  
TRI-STATE CONSTRUCTION EQUIPMENT CO.

## Precision Intakes Full Line of Surface Water Intakes

- 8" & 10" riser with patented 8" & 10" combination Tees.  
Also 6" square & round risers with patented reducing Tee.
- Constructed of heavy-weight, high-density polyethylene.
- Parts highly adjustable & interchangeable with others on the market.
- Orifice plate placed at tee level or at ground level.
- Exclusive locking device on each part.
- User Friendly-Priced effectively.
- Adaptor available to repair old metal or broken intakes.



Type II Riser-  
6" & 10" Trash  
Baskets with  
marker cup feature



Why inventory 2, when 1 serves both!



PATENTED  
REDUCING TEE

"Dealer Inquires Welcome"

## ~~PRECISION INTAKES~~

Norm & Coretha Rozendaal

2064 Republic Ave West  
Monroe, IA 50170

(800) 932-7611

(641) 259-2651

(641) 259-3218 Fax

"LIFE'S SHORT—DIG FAST!"

## BUCKEYE 7200 MAGNUM



- STATE-OF-THE ART DESIGN
- HIGHER PRODUCTION
- BETTER BUILT

## MIDWEST AUGER-AERATOR

AUGER BACKFILLERS / WHEEL TRENCHERS  
AUTHORIZED DEALER — BUCKEYE / SPEICHER  
1-800-232-7008

