

ILICA



NEWS

Land Improvement Contractors Of America · Illinois Chapter

May - June 2014

David Kennedy
Chairman of the Board

David Haag
President

Tom Beyers
Vice President

Dave Hurst
First Vice President

Janet Burtle-Doubet
Secretary

Bill Dean
Treasurer

Directors

Brian Brooks
Wayne Litwiller

Steve Anderson
Stuart Anderson

Grant Curtis
Mike Yordy

Lee Bunting
John McCoy

Brent Breedlove
Joe Streitmatter

Scott Day
Jon SeEVERS

John Barttelbort
Doug Nicholson

Paul Halter
Norm Kocher

Janet Burtle-Doubet
Executive Director

Upcoming Events:

3rd Annual Area 6 Golf Outing -
June 20th - Mattoon, IL

Summer Member Meeting -
**June 27th - Stoney Creek Inn,
Moline, IL**

ANOTHER BUSY SUMMER FOR ILLINOIS LICA!



**Summer Drainage Workshop
July 29th, 30th, 31st**



MARTIN
E q u i p m e n t

**Summer Members Meeting &
Picnic - Equipment Demo &
Hands on Operation**

Also Featured Inside:

3rd Annual Area 6 Golf Outing Registration *(page 7)*

Summer Picnic & Members Meeting - John Deere Equipment Demo *(10)*

LICA Position Paper On Proposed EPA & USACE Rule on CWA *(page 11)*

Extension Connection:

Economics of Tile Drainage in the Midwest *(page 13-15)*

Return To: Illinois LICA
P.O. Box 474
Brimfield, IL 61517



CONGRATULATIONS TO LICA SCHOLARSHIP WINNERS FROM ILLINOIS

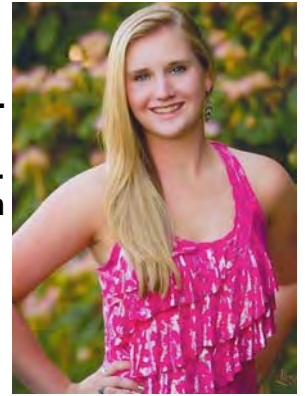
Dennis Behrends' daughter:



Angela Behrends
Danforth, IL

Angela will attend
SIU at Edwardsville
to major in Nursing.

Rick Maguire's daughter:



Skyler Maguire
Virden, IL

Skyler will major in Ki-
nesiology at Tarleton
State University

The National LICA Ladies committee raises money at both LICA conventions each year to maintain the resources for this scholarship program. This program gets a lot of attention at LICA conventions with everything from the \$25 charge for not shutting your cell phone off during meetings, to someone's shoes being held for ransom is used to raise money for these scholarships. **The National LICA Ladies committee deserves our thanks** for all their hard work that makes it possible to help these delightful young people pursue their higher education.

This year, there were 8 scholarship winners, including these 2 recipients from Illinois.



JCG MIDWEST

DRAINAGE PRODUCTS

****A ONE-STOP-SHOP FOR ALL YOUR DRAINAGE NEEDS!****

Located directly off of US Rt. 51 at:

2700 North Main St. - Moweaqua, IL 62550

(217) 768-3040

Email: JCGMidwest1@gmail.com Website: WWW.JCGMIDWEST.COM

<p>PIPE:</p> <ul style="list-style-type: none"> • MAXI COILS • DUAL WALL • SINGLE WALL • FITTINGS • PVC • CORRUGATED METAL 	<p>ACCESSORIES:</p> <ul style="list-style-type: none"> • RISERS • FABRIC • SHOVELS • PROBES • TILE CUTTERS • WATER CONTROL STRUCTURES 	<p>EQUIPMENT:</p> <ul style="list-style-type: none"> • TRENCHER PARTS <ul style="list-style-type: none"> ◦ CHAINS, ROLLERS, CUTTERS, TEETH, SPROCKETS, CONVEYOR BELTS AND MORE • TILE CARTS • MAXI SPOOLS
---	--	---

LET US HELP YOU SAVE TIME BY USING OUR DELIVERY SERVICE!

* ILICA SUPPORTER *

You protect our environment, but who's protecting you?

United Fire Group's state LICA insurance program is designed for dirt-moving contractors and includes:

- coverages tailored to your business needs,
- safety group dividends,
- preferred pricing, and
- professional loss control services.

Let United Fire Group protect you and your business.

Administered by:

For more information, please contact your local United Fire Group agent; PRINS Insurance, Inc. at 800-831-8545; or email Bruce Mosier at bmosier@prinsins.com.

The ILICA News



Editor / Advertising Manager
Janet Burtle-Doubet

Chairman of the Board
David Kennedy, Colfax

President
David Haag, Kempton

Vice President
Tom Beyers, Odin

1st Vice President
Dave Hurst, Yates City

Secretary
Janet Doubet, Williamsfield

Treasurer
Bill Dean, Mattoon

Educational Advisor
Professor Richard Cooke
University of Illinois

The *ILICA News* is the official publication of Illinois Land Improvement Contractors Association, Inc. at 118 E. Knoxville St., Brimfield, IL 61517. (309) 446-3700.

Subscription price is \$50.00 per year, issued bi-monthly: Jan.-Feb.; Mar.-Apr.; May-June; July-Aug. Sept.-Oct.; Nov.-Dec., and also includes one annual directory.

FEATURES

- LICA Scholarship Winners From Illinois 2
- 3rd Annual Area 6 Golf Outing 6
- Area 6 Golf Outing Registration Form 7
- Summer Drainage Workshop Dates Set 9
- Summer Picnic & John Deere Equipment Demo 10
- LICA Position Paper on Proposed EPA & USACE Rule on CWA 11
- 2014 National LICA Summer Meeting Tour Information 21
- 2014 National LICA Summer Meeting Registration 22

COLUMNS

- Board Meeting Notice 3
- Presidents Message 4
- New Members 5
- ILICA Ladies Page: Landscape Trends of 2014 8
- The Extension Connection 13-15
- 2014 Committee Members..... 16
- Member Application 17
- Featured LICA Benefit: Case Equipment Discount 18
- Advertisers Index 19
- Calendar of Events 19
- Safety Feature: Are Trench Excavations Confined Spaces? 20

The LICA Creed



Land, the foundation of the Nation
 The basis of all wealth
 The heritage of the wise
 The thrifty and prudent
 The poor man's joy and comfort
 The producer of food, fiber and fuel
 The basis of factories
 The foundation of banks

All that man builds is from the land. We often take it for granted or even abuse it; And yet many, unthinkingly and unknowingly pass the land by. What man does with the land will be the deciding factor of his survival.



Meeting Notice

Summer Board & Members Meeting
June 27, 2014 - 12:45 pm
Stoney Creek Inn
101 18th Street - Moline, IL 61265

Map & Directions on page 19

PRESIDENT'S MESSAGE



Greetings from Kempton!

My calendar says it's spring but it's hard to convince my body.

It looks like we have a busy summer planned at Illinois LICA. The Area 6 golf outing is coming up Friday, June 20th. Mark your calendars and get your 4-some together. Bill Dean has a brand new shed which is ready for us to visit again as well. The registration form is in this newsletter and on the website.

The summer picnic will begin with a luncheon at Stony Creek Inn, Moline sponsored by John Deere and Martin Equipment. After lunch, we will be chauffeured out to the John Deere Proving Grounds at Coal Valley for a live equipment demonstration and then members will also have a chance to test drive the latest John Deere construction equipment. Although there is no registration fee for the picnic, please notify Janet or Lauri at the ILICA office if you plan to attend.

There will be another golf outing this September and we'll be back to Morton and Pine Lakes golf course. There will be a lot more information about that coming soon.

The education committee is working on finalizing the plans for the summer drainage workshop. The dates this year

Agri Drain
CORPORATION

America's most complete manufacturer and supplier of products for drainage water management, wetlands, ponds, lakes, erosion control, and land improvement.

Call for your FREE catalog today! 1-800-232-4742

info@agridrain.com • www.agridrain.com



4678 Weinmann Dr., Suite A
Olney, IL 62450

LEE MILONE
OWNER / MANAGER

Phone (618) 395-8046
Fax (618) 393-4702

1-800-247-7972

"WE TAKE PRIDE IN OUR WORK AND SERVICE WHAT WE SELL"

are July 29 - 31st and it will be held at Richland Community College. Look for more information on this event soon as well.

The Summer National LICA Convention will be held in Indianapolis July 14th -19th. It's a short drive to Indy, so mark your calendar to attend. Special tours are set up for the first couple of days for everyone's enjoyment and business meetings are set toward the end of the week.

In March, Illinois was very well represented at the National LICA meetings. There were many informative and well attended committee meetings. We also elected Steve Anderson to be National LICA Vice President. We all know he'll do a good job. Congratulations Steve!

And since our last newsletter, we have lost a charter member of the Illinois LICA. Back in 1957, Don Hurst and a few others had a vision. Thank you Don, for your years of dedication to the organization. We'll miss you a lot.

As everyone gets busy from daybreak to dark, remember, SAFETY FIRST!!!!

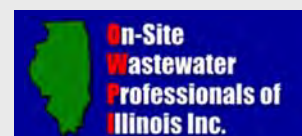
David Haag, President

SPECIAL THANK YOU!

Steve Johnson, one of our newest ILICA members listed on the following page, is also coordinator for the annual On-Site Waste Professionals of Illinois (O.W.P.I.) conference in Collinsville. Illinois LICA received a very kind email from Mr. Johnson which also went to several of his O.W.P.I. counterparts, thanking ILICA for our support and encouraging their membership to look into the many benefits of membership with our organization.

As most of you know, Wayne Litwiller has tried for years to blend these two organizations and I believe this is an indication that we're well on our way to that goal.

Thank you Steve, for your support!
And thank you Wayne for never giving up!





NEW MEMBERS

Active Contractors

Tom Demith - Tom's Excavating Inc.

2512 Riverdale Drive
New Lenox, IL 61457
Ph: 815-726-2440

Gaynor Edwards - G. Edwards Contractors, Inc.

20159 N Rand Rd.
Palatine, IL 60074
Ph: 847-202-0570

Steve Johnson - J & S Wastewater Systems, Inc.

1404 Carrol Ave
Urbana, IL 61802
Ph: 217-328-7796

Mark Lundahl - Meyer Landscape & Design, Inc.

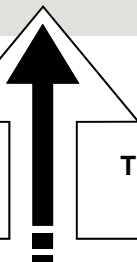
2817 47th Street
Moline, IL 61265
Ph: 309-762-6226

Bill Schopf - Bill's Excavating Inc.

8505 S McVicker Ave
Burbank, IL 60459
Ph: 708-602-0548

Thank You!

Go ahead,
give them a



They'll thank
you for it!

DO YOU KNOW ANY OF THESE NEW MEMBERS?

If so, why not invite them to the Area 6 Golf Outing ... or the John Deere Demo, Picnic and Equipment Operation?



ENVISION

INSURANCE GROUP

Envision Insurance Group would like to announce the addition of **Dawn Thurston** to our personnel located at the 300 East War Memorial Drive location in Peoria. Dawn is licensed in all lines of insurance & specializes in Personal Insurance exposures. She has over 24 years experience in the insurance marketplace and earned the **Certified Insurance Services Representative (CISR)** designation in 2012. Dawn can be reached at **(309) 685-6606**.



United Fire Group's state LICA insurance program is designed for dirt-moving contractors and includes:

- Coverages tailored to your business needs.
- Safety group dividends.
- Preferred pricing, and ...
- Professional loss control services

Associates

Jet, Inc. - Chris Mandich

750 Alpha Drive
Cleveland, OH 44143
Ph: 800-321-6960

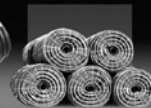
PRINSCO: YOUR LONG HAUL PLANNING PARTNER

As a leader in the agriculture water management industry for over 35 years, we've seen you through plenty of highs and plenty of lows. Prinsco is in it with you for the long haul. We offer a full line of quality products with the experience and technical expertise that comes from a strong history in the industry. Prinsco is your planning partner.

Call 800.992.1725 today!



GOLDLINE



GOLDLINE MAXIS



ECOFLO



GOLDFLO



MAXI STRINGER TRAILERS



ACCESSORIES & FITTINGS

WATER MANAGEMENT SOLUTIONS SINCE 1975

800.992.1725 | www.prinsco.com | agblog.prinsco.com



3RD ANNUAL AREA 6 GOLF OUTING - JUNE 20TH



Registration forms went out last week and there are already several people signed up. Send in a foursome so you know you'll have fun; send in whoever you have and we'll work you in with someone you'll end up being friends with by the end of the day. The registration is also on the following page and available on our website, so however you do it, just fill one out and get it to the of-

fice. **The first 25 registrants received at the office will get an ILICA 12-pack cooler when they get to the course!**



Illinois LICA is returning to Meadowview Golf Course once again for the Area 6 fund raiser in Mattoon. And why wouldn't we? Our attendance and sponsorship support were both up last year and we hope our dedicated membership will continue that trend and join us for this afternoon of chasing that little white ball around the pasture!

Bill Dean is leading this effort again of course, and he's also got a new shed going up that you'll be able to see from the highway! Crops are going in well around Illinois it seems, so our hope is that by June, our contractors are ready for a break in the action and can take off early on June 20th, have a quick lunch at the course and then spend the afternoon with friends, family or co-workers while raising money for ILICA!

JCG Midwest, Springfield Plastics Inc and Birkey's have stepped up again this year as our outing sponsors, so thank them for their continued support if you get the chance. The success of this event, as with all of our ILICA activities, depends on the support of our membership. Our past success has encouraged other LICA chapters around the county to follow our example and now, almost a dozen golf outing fund raisers are scheduled this year.

Hole sponsorship is open to everyone and if we don't have a sign for you already, we will get one made. Or, if you just want to golf, we welcome that as well. Trust me, it's a fun afternoon with a lot of good people, good food and hopefully, good weather. Come join us and carry a golf club and a beer around for the afternoon instead of a probe or shovel!

Hotel Information:

Bill Dean has set up a room block at the Quality Inn & Suites, 4922 Paradise Rd, Mattoon - (217) 235-0222.

This is the closest hotel to Meadowview and Bill Deans' shop. If you miss out on getting a room in that block there are a few other hotels close by too.

Comfort Suites Mattoon - (217) 235-6745
1408 Broadway Ave. East, Mattoon

Holiday Inn Express - (217) 235-2060
121 Swords Dr., Mattoon

And although there are no formal room blocks at these hotels, you should get a very good rate with your **LICA CLC hotel discount card!**

Schlatter's Inc.

Intelligent Water Management™



- Wolfe Drainage Plows
- Trimble GPS Machine Control
- RTK Topo Mapping
- Water Management Design Software
- DLog Tile Mapping





www.SchlattersInc.com

(219) 567-9158 Francesville, IN



Illinois Land Improvement Contractors Association
3rd Annual Area 6 Golf Outing - Friday, June 20, 2014



Meadowview Golf Course - Shotgun Start 1:00 pm

6489 Meadowview Lane, Mattoon, IL 61938

Golf & Dinner.....\$ 80.00

(Includes Green Fees, Golf Cart, Noon Hamburger lunch, Driving range, 2 Beverage tickets, evening Buffet Dinner & Prizes)

Golf Only..... \$ 55.00 • Dinner Only..... \$ 40.00



Outing Sponsors

JCG MIDWEST
DRAINAGE PRODUCTS

Springfield Plastics, inc.

BIRKEY'S
www.birkeys.com

Registration Form

Please RSVP By June 6

Enclosed is the check PAYABLE TO ILICA

In the amount of \$ _____ for the following;

1. _____
2. _____
3. _____
4. _____

Golf & Dinner
@ \$80

Golf Only
@ \$55

Dinner Only
@ \$40

<input type="checkbox"/>	<input type="checkbox"/>	<input type="checkbox"/>
<input type="checkbox"/>	<input type="checkbox"/>	<input type="checkbox"/>
<input type="checkbox"/>	<input type="checkbox"/>	<input type="checkbox"/>
<input type="checkbox"/>	<input type="checkbox"/>	<input type="checkbox"/>

My preferred foursome is: _____ I do not have a preference

Name: _____ Phone: _____

Green & Tee Sponsors

Company Name (To be listed on sign) _____

Contact Person: _____ Phone: _____ Email: _____

- Yes, we would like to Sponsor a Green or Tee - **\$150**
- Yes, we would like to Sponsor a Hole at both Outings - **Only \$250**
- Please provide our sign (\$35 per sign)
- We will provide our own sign (16" x 24")
- Use sign from last year's golf outing

\$50 discount for participating in both ILICA Area Golf Outings as a Hole Sponsor

Meal & Outing Sponsors

- I would like to be a lunch sponsor \$250.00 *
- I would like to be a Dinner Sponsor \$350.00 *
- I would like to be an Outing Sponsor \$500.00 **
- I would like to be an Outing Sponsor & sign up a foursome \$740 *** (includes 1 free golf & dinner registration)

Enclosed is the check **PAYABLE TO ILICA**, in the amount of \$ _____ for registration and sponsorship.

Mail check and this form to:

Illinois LICA - P.O. Box 474 - Brimfield, IL 61517 (Credit Cards also accepted. Call the ILICA office @ 309.446.3700 for details)

* Lunch and Dinner sponsors will have signage in place at registration table and dining area and receive recognition in the annual ILICA Directory.
 ** Outing sponsors will have signage (including company logo) in place at registration table, in dining area and at cart pick up location and will receive recognition in the annual ILICA Directory and at the annual Convention and Member meeting.
 *** Outing sponsors that also purchase a foursome receive special pricing on golf & dinner registration; **buy 3 get one free!**

ILICA LADIES PAGE



Cardinal Flower



Culvers Root



Wild Ginger

Landscape Trends of 2014

Source: Kelly Allsup, Extension Educator, Horticulture, kallsup@illinois.edu

How does one predict the landscape design trends of 2014? Well they look at some of the most popular trends of 2013. In the past the landscaping was a row of perennials or shrubs around the foundation of a house, some nice shade trees and lots of lush green lawn. In 2014, gardeners are seeking more from their landscape by trying to create an outdoor living space which has been trending for a while. A place to drink their morning coffee, watch the birds and have family gatherings.

This leads to the first prediction: fire pits or fire grill because who doesn't want to enjoy the outdoors while grilling a steak or keeping warm



on a cool night. These can be very easy for homeowners to install and come in an array prefabricated kits.

The sustainable gardener will rule in 2014 by conserving water and preventing runoff and erosion. Rain barrels will be placed under gutter spouts to collect the rains of the spring for the droughts of the summer. If it doesn't rain an inch every week then it is advised to give additional water to the landscape to keep the plants in good health. Many gardeners may be contemplating installing drip irrigation to save time and conserve water. According to Colorado State University, drip irrigation is 90% efficient in getting the water where it needs to be compared to sprinkler irrigation at 50-60%.

Rain gardens and permeable walkways may also experience a spike in popularity. Rain gardens are designed to capture storm water runoff from roof tops, drive ways or parking lots. Instead of going into local water ways the water is



recycled back to recharge the ground water and filter out pollutants. According to Rutgers University, Rain gardens are 30% more effective than a patch of lawn. Plants like swamp milkweed, cardinal flower, penstemon and Culver's root should be employed in a sunny rain garden. For a shade rain garden use native ferns, Jacob's ladder and wild ginger.

Gardeners may also use permeable walkway pavers, pervious concrete or open celled concrete blocks instead of an old fashioned slab of concrete to help reduce runoff and erosion. They still provide the solid base but allow the water or melting snow to seep into the ground rather than washed into the storm gutters. If walkways or drive ways are near trees, this will allow the water to get to the roots.



Finally, the last predicted trend is less grass and more native plants. You don't have to be an experienced gardener to know that having a lush green lawn is a lot more work than creating gardens of native plants. Native plants do not need as much water or fertilizer, regular mowing, gets considerably less pests and diseases and once established can be home to wildlife like birds and butterflies.



POSSIBLE ILICA LADIES ACTIVITY FOR 2015 CONVENTION!

This early in the year, there are still several things up in the air for our 2015 convention, but there's a possibility we'll have a special landscaping session for our ILICA ladies. The process will begin with a high-resolution photo of any spot in your yard or at your office that you'd love to update with new landscaping

Take a photo of your project area and jot down a little information about your goal for the space; things like which direction (N-S-E-W) it faces, how much sun/shade it gets during a day, your intended utilization of the area ... that sort of thing. If we can get it on the schedule, Holly Yordy will transform your photo into a landscaping "work of art" right before your eyes!

SUMMER DRAINAGE WORKSHOP SET FOR JULY 29TH, 30TH & 31ST

SAVE THE DATE!



This year's drainage workshop dates have been confirmed so mark your calendars for July 29 - 31st. We're returning to Richland Community College with a similar schedule as last year, only with a twist!

The first day will be machine overview although there is discussion of having equipment there for a walk around in addition to the classroom presentations. The second day will include classroom and field sessions with Richard Cooke as there are several bioreactors being installed near the college which will be in various stages of completion. The workshop will conclude with AGPS and Trimble GPS systems being presented with another opportunity to utilize the field site for hands on work.

Richland Community College has always been a perfect location for our drainage workshops with wide open spaces, great food choices and a very helpful staff. There is no Farm Progress show set for Illinois this summer, so it will be much less hectic around that area making hotel rooms close by easier to come by as well.

Make sure you mark your calendar for this scheduling and hope for good weather. The added field sessions should be a big asset to the overall workshop, if nature cooperates!

ILICA Drainage Workshop Tentative Agenda

Tuesday, July 29th - Equipment Maintenance / Machine Overview

Wed., July 30th - Richard Cooke: Dual drainage/sub-irrigation systems and other classroom sessions to be determined.
Field Session - Installation of Bioreactors

Thurs., July 31st - AGPS & Trimble GPS software presentations and possible field ses-



Since 1923 supplying quality drainage products with service second to no one...

Why Fratco Pipe and Fittings?

Quality and Service. We are 100% committed to offering the best HDPE corrugated pipe and fittings to the market, with a friendly and knowledgeable staff that is dedicated to providing unparalleled flexibility and delivery, ensuring prompt and accurate order filling from our fully stocked yards.



Experience the Fratco Difference....

Members of:



ST. ANNE OFFICE
499 SOUTH OAK ST.
ST. ANNE, IL 60964
(815) 427-8144
(800) 475-8144

www.fratco.com



MT. PLEASANT OFFICE
1600 W. WASHINGTON ST.
MT. PLEASANT, IA 52641
(319) 385-1213



FRANCESVILLE OFFICE
4385 SOUTH 1450 WEST
FRANCESVILLE, IN 47946
(219) 567-9133
(800) 854-7120

Members of:





Friday, June 27, 2014

**John Deere Equipment Demo & Hands-on Operation
John Deere Proving Grounds - Coal Valley, IL
Annual Picnic Lunch - Stoney Creek Inn - Moline, IL**



Illinois LICA is being hosted by John Deere Corporate and Martin Equipment for the ILICA summer picnic and member meeting at Stoney Creek Inn, Moline Illinois. Busses will take our guests from Stoney Creek to Coal Valley for a unique opportunity to watch a live equipment demonstration followed by hands on operation of the latest and greatest John Deere construction equipment available today!



12:00 - 12:45 pm ... Lunch @ Stoney Creek Inn

12:45 - 1:15 pm ... ILICA Member Meeting

1:15 - 1:30 pm ... Load Busses and Travel To Coal Valley

1:45 - 2:30 pm ... DEMO

2:30 - 4:00 pm ... Equipment Operation

4:00 - 4:30 pm ... Load Busses and Travel To JD Pavilion

4:30 - 5:00 pm ... Visit JD Store and Pavilion

Join us for a day of family fun in lovely Coal Valley, Illinois! Call the ILICA office for more info!

Since John Deere and Martin Equipment is sponsoring our picnic lunch, there is no fee for registering for this event. Our hosts do need to know how many to prepare for however, so please RSVP via email, fax, phone or mail so we can tell them how many of us to expect.

The registration form has been mailed to all ILICA contractors and can also be found online at www.illica.net. Please mark your calendars and join us for this exciting afternoon.

There is a room block at the Stoney Creek Inn at \$109+ per night. Mention "Illinois LICA" to get our group rate. Please call **309-743-0101** for reservations or to reach the hotel directly.

The room block drops May 28, 2014!

Email Lauri@illica.net with your headcount for the lunch and demo;

Call 309.446.3700 anytime and leave a message with your name and headcount if it's after hours;

Fax the form to [309.446.3744](tel:309.446.3744) anytime, day or night.

Mail your form to: Illinois LICA

PO Box 474, Brimfield, IL 61517

Great Lakes Inter Drain



2951 East State Street • Fremont, OH 43420

Your U.S. Distributor for:

Inter-Drain Trenchers and Plows

New and Used Equipment

Advanced Geo-Positioning Solutions (GPS)

for Survey and Total Machine Control

AFT Add on Trenchers • Laser Systems

Weichmann Chain, Cutters etc.

"We have the field experience you can depend on after the sale."

AGPS
ADVANCED GEO-POSITIONING SOLUTIONS, INC.

For more information call:

(800) 767-1904 or (419) 332-1904

Fax: (419) 332-2344

Visit us on the web at: www.greatlakesinter-drain.com

or email: sales@greatlakesinter-drain.com

AFT



LICA POSITION PAPER ON THE PROPOSED EPA & USACE RULE TO EXPAND THE CLEAN WATER ACT (CWA).

Source: John Peterson, LICA Director of Government Relations

On April 21st, 2014, the Environmental Protection Agency (EPA) and the U.S. Army Corps of Engineers (USACE) released a proposed rule to significantly expand the Clean Water Act (CWA). The public has until July 21st, 2014 to comment on this proposal. LICA will respond.

The CWA defines the Waters of the United States (WOTUS), and the Supreme Court has reviewed this definition on multiple occasions. Although *U.S. v. Riverside Bayview (1985)* gives the EPA broad authority to categorize bodies of water as WOTUS, in its two most recent cases, *SWANCC v. Army Corps of Engineers (2001)*, and *Rapanos v. United States (2006)*, the definition was narrowed. The narrower reading includes a test for determining whether “other waters” are WOTUS. The Court concluded that Congress intended that the CWA’s jurisdiction be limited to navigable waters and non-navigable waters that have a “significant nexus” to navigable waters, including wetlands adjacent to navigable waters. This is the “significant nexus test” brought about by a concurring opinion in *Rapanos* by Justice Kennedy.

The proposed rule also includes what is not a WOTUS, including prior converted cropland, ditches that are excavated wholly in “uplands,” drain only in uplands, and have less than perennial flow; ditches that do not contribute flow to a navigable water; artificially irrigated areas, and other areas where producers may be concerned.

On March 25th, 2014, EPA and the USACE jointly released the proposed rule defining the scope of streams and wetlands the agencies claim jurisdiction over for protection under the CWA. Earlier EPA had released a report titled *Connectivity of Streams and Wetlands to Downstream Waters: A Review and Synthesis of the Scientific Evidence*, which was to serve as the scientific support for the upcoming release of the new rule. That report was a predictor of the broad and expansive rule released on April 21st. In promotional materials released by the EPA, they claim the proposed rule;

- Reduces confusion about CWA protection.
- Clarifies the types of waters covered under the CWA.
- Saves businesses time and money.
- Provides more benefits to the public than it costs.
- Helps states to protect their waters.
- Increases CWA program predictability and consistence by increasing clarity as to the scope of WOTUS.
- Minimizes the number of case-specific determinations on whether something is a WOTUS.
- Brings certainty and predictability, including to agriculture.

- Was encouraged by the Supreme Court and the agricultural community.
- Does not add to or expand the scope of waters historically protected under the CWA.

LICA’s initial review of the proposed rule leads us to conclude that many of the EPA and USACE’s claims are oversimplified or exaggerated. Accepting their definition of what is a tributary, would vastly expand their regulatory power. EPA declares that all tributary waters “...have a ‘significant nexus’ to a traditional navigable water, interstate water, or territorial sea, such that they are ‘Waters of the United States’ without the need for a separate, case-specific significant nexus analysis.” They also say that a ‘tributary’ may be “... ephemeral, intermittent, or perennial, but the tributary must drain, or be part of a network of tributaries that drain into waters which are currently used, used in the past, or may be susceptible to use in interstate commerce in the future.”

Using the term “ephemeral” gives EPA tremendous regulatory power because ephemeral is defined by most people as transitory, transient, fleeting, short lived, momentarily brief, and as Webster says, “lasting one day only.” LICA believes EPA and the USACE have concluded that all tributaries are to be considered WOTUS. Not a lot escapes this definition. There is not much left that EPA cannot claim jurisdiction over when it comes to water coming off your property. Many believe the CWA is not about water at all, but is a land-use control act.

LICA also believes that many of the conservation practices now “exempted” from the rule were never subject to CWA jurisdiction in the first place, and practices that should certainly be exempted are not mentioned in the listing provided. EPA and NRCS say the practices “not mentioned” are exempted on other lists or rules. We would like them to be listed here.

This rule will have a substantial adverse impact on farmers, earthmoving contractors, counties, conservation districts, and watershed districts that serve as public drainage authorities, townships and counties serving as road authorities, and all property owners. It will be particularly significant in that all wetlands in the prairie pothole region of the US (MN, IA, ND, SD, and MT) will now be subject to this new rule, a position never taken before by the agency.

LICA believes this CWA proposed rule is inconsistent with other Supreme Court rulings establishing limits to federal jurisdiction over isolated wetlands and ephemeral streams. We do not believe this is what Congress intended when enacting the CWA, or what Congress or the Supreme Court told EPA and the USACE to do in clarifying its jurisdictional reach. This pro-





US ARMY
CORPS OF ENGINEERS

LICA POSITION PAPER ON THE PROPOSED EPA & USACE RULE TO EXPAND THE CLEAN WATER ACT (CWA) (CONT.)

posal significantly expands federal jurisdiction that will trigger additional expensive and time-consuming permitting and regulatory requirements. It also discourages the use of low-impact or “green” development practices such as rain gardens, swales, and even sediment ponds, as the language about whether developers would have to get a permit before installing these systems is unclear. The proposed rule also exacerbates the current regulatory confusion by adding new, undefined terms that will give regulators automatic federal jurisdiction over properties that contain isolated wetlands, ephemeral streams, or any land features covered under the expansive definition of ‘tributary.’ It also fails to appropriately recognize the states’ authority to regulate what have historically been deemed “state waters.”



For the reasons provided in this paper, LICA is opposed to the EPA and USACE Proposed Interpretive Rule Regarding the Applicability of the CWA. There would be no point in offering a clarifying rule unless the intent was to clarify an expanded regulatory role.

Available in 8' or 10' width options

For Mounting on skid loaders with 3000-5500psi and 30-50GPM

NEW!!

Model R31
Backfiller

Adjustable Wear Plates
Side to Side tilt Standard
Universal Quick Attach Standard

Online video at: [//www.youtube.com/watch?v=MYsy5WB_9tE](http://www.youtube.com/watch?v=MYsy5WB_9tE)

sales@brownbearcorp.com

www.brownbearcorp.com

BROWN BEAR
Brown Bear Corp., Corning, Iowa 50841 (641) 322-4220



2014 - 2015 Newsletter Advertising contracts have gone out for this publication year, which starts with the **Full Color** July - August 2014 *ILICA News*!

Contact the ILICA office if you want to see **YOUR** ad here !



Northland Trenching Equipment, LLC

"We are the largest volume supplier for this type of equipment in the US"



Inter-Drain
Plows & Trenchers

Trimble TRIMBLE GPS SYSTEMS



The Inter-Drain plow, three types, double link, single cantilever, or single link, each in three sizes. Cat, Cummins or Volvo power. Offset available.



The Inter-Drain chain trencher. Four size choices, mechanical or hydraulic chain drive, vertical and offset available. Cummins, Volvo or Cat power.

Corporate Office
12929 410th Avenue
Waseca, MN 56093
Phone: (507) 835-4214
Fax: (507) 835-2032

Eastern Division - Indiana
3578 North State Road 59
Brazil, IN 47834
Phone: (812) 835-2900
Fax: (812) 835-2535

Email: nte@hickorytech.net
www.northlandtrenching.com

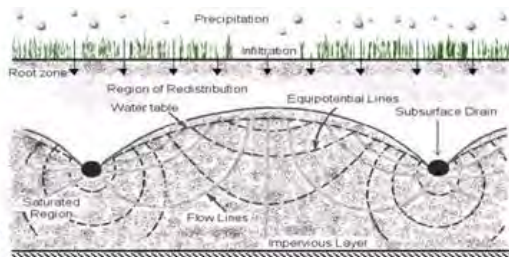
FULL SERVICE AND REBUILDS

HUGE PARTS INVENTORY

NORTHLAND Trenching
Equipment, LLC



UNIVERSITY OF ILLINOIS
EXTENSION



The Extension Connection

Source: Richard Cooke & Students

ECONOMICS OF TILE DRAINAGE IN THE

My first inclination was to provide basic information about the Economics of Tile Drainage, but I soon realized that there are several such articles available online, including at least three Extension publications from Land Grant institutions in the Midwest. The Land Grant system produces unbiased, science-based information that is often applicable across state lines. The information provided in these three articles is definitely applicable to Illinois. So as not to "reinvent the wheel," I will briefly present these articles and provide instructions on using the interactive Economic Analysis routine in the Illinois Drainage Guide.

Extension Articles on the Economics of Tile Drainage

Understanding the Economics of Tile Drainage.

Don Hofstrand, Iowa State University Extension Service.
<http://www.extension.iastate.edu/agdm/wholefarm/pdf/c2-90.pdf>
This is a comprehensive article that lists the advantages of tile drainage and explains several investment timing strategies and landlord/tenant strategies. It also includes sample calculations of profitability for different scenarios, and discusses tile drainage inspection and maintenance.

Economic Factors of Drainage Related to Corn Production.

B. H. Nolte and R. D. Duvick, Purdue University Cooperative Extension Service.

<https://www.extension.purdue.edu/extmedia/nch/nch-23.html>

This article introduces the concept of using computer models to predict yield response to drainage improvements, and includes example approximate-analysis calculations of benefits and costs of installing tile drainage, for different financing options.

Economics of Tile Drainage. Dwight Aakre, North Dakota State University Extension Service.

<http://www.ag.ndsu.edu/farmmanagement/documents/agl12-economics-of-tile-drainage-on-rented-land>

This article, based on a PowerPoint presentation, lists the advantages of tile drainage. It provides an example of possible adjustments to rental fees in tiled lands, and provides an outline of the determination of marginal tax rates.



ECONOMICS OF TILE DRAINAGE IN THE

CONT.

The Economics Analysis Routine in the Illinois Drainage Guide

The main interface for the Economic Analysis routine, found in the Economic Considerations chapter of the Illinois Drainage Guide, is shown in Figure 1. It can be used to:

Figure 1. Interface for the Economic Analysis Routine

1. Determine the break even income based on the cost of a drainage system, or to
2. Determine the profitability of a drainage system for specified yield increases for up to two crops.

Measures of profitability provided by the routine include:

- **Net Present Value (NPV).** The Net Present Value is the present value of the expected future cash flows minus the initial cost. A positive NPV value is indicative of a profitable system.
- **Internal Rate of Return (IRR).** The Internal Rate of Return is the rate at which the future cash flows, discounted back to the present, equals its price. It can be viewed as the interest rate that results in an NPV of zero or a PI of one. If the IRR exceeds the interest rate at which capital can be obtained, then the system is profitable.
- **Discounted Payback Time (DPT).** The Discounted Payback Time is the length of time it takes to recover the cost of an initial investment, with regard to the time value of money. For this measure, the value of future income is

discounted by the cost of obtaining capital, that is, the interest rate charged on a loan.

- **Undiscounted Payback Time (UPT).** The Undiscounted Payback Time is the length of time it takes to recover the cost of an initial investment, without regard to the time value of money. In effect, the UPT is the same as evaluating the DPT under the assumption that the cost of capital, the interest rate, is zero.

The routine gives the user the option of choosing the depreciation method and time. The per acre cost of the drainage system may be entered directly into the main interface, or by using either of the cost screens shown in Figure 2. These screens may be accessed by clicking on the Cost of Drainage Practice button on the main screen. The user has the option of using the drainage area, tile spacing, and the unit cost of the laterals; or the length and unit cost of each size of pipe used in the design. The pipe costs used in the interfaces should be replaced with contractors' installed prices. In both instances the cost of the system main can be entered separately, and connection costs can be included in other costs.

Pipe Size	Length (ft)	Cost (\$/ft)
3 inches	0	1.45
4 inches	0	1.50
5 inches	0	2.90
6 inches	0	3.20
8 inches	0	3.75
10 inches	0	4.65
12 inches	0	5.65
15 inches	0	7.70
18 inches	0	10.40
24 inches	0	15.30
36 inches	0	27.50

Figure 2. Cost of Drainage Practices Interfaces

The Economic Analysis routine can be used to provide a rationale for choosing between drainage systems. By way of example, consider two drainage scenarios for a 40 acre field. In the first scenario the tiles are 100 feet apart, there are 15 connections each costing \$45, and the main cost \$3000. In the second scenario the tiles are 50 feet apart, there are 29 connections each costing \$45, and the main cost is increased to \$5000 to account for the higher intensity of drainage. The system costs and break even income for these two scenarios are shown in Figures 3 and 4, respectively. At \$5 per bushel corn, the wider spaced system would be justified by a 10 bushel per acre yield increase, while the narrower system would require a 20 bushel per acre yield increase.

ECONOMICS OF TILE DRAINAGE IN THE

CONT.

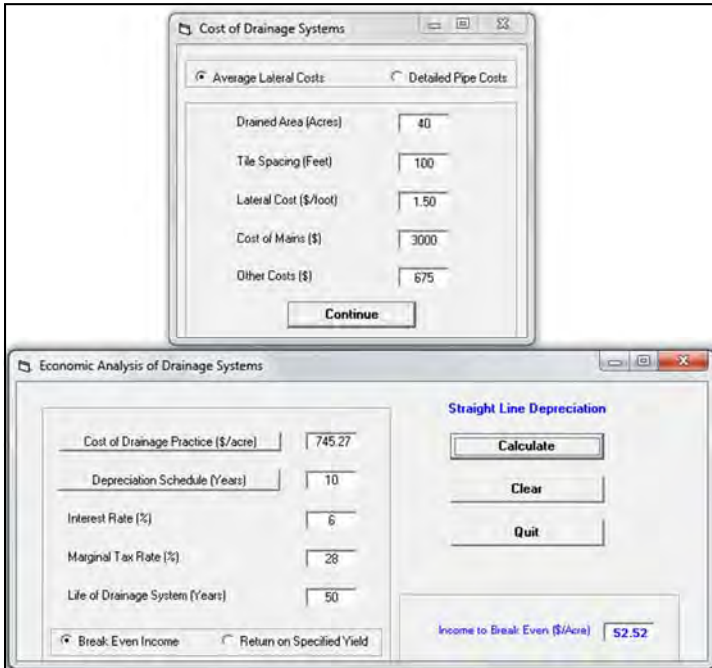


Figure 3. Break even calculation for a scenario with tiles spaced 100 feet apart.

Figure 4. Break even calculation for a scenario with tiles spaced 50 feet apart.

Whether or not the 50-foot spacing is more beneficial is dependent on the yield response to drainage. The three articles presented above all indicate that this response is difficult to determine.

In the next Extension Connection:

In the next article, two methods for estimating yield response to drainage, one based of computer simulations and the other on historic yield data, will be presented!

Ladies Fund-Raiser T-Shirt Quilt

Thanks to everyone who brought t-shirts for Judy to recent board meetings! She has a good start but will need **LOTS** more to make the quilt for next year's Ladies Auction Item!

Please send one of your gently used business t-shirts with logos or names or both to: PO Box 474, Brimfield, IL 61517 Judy will take whatever you can spare.

It will make a beautiful quilt with
ILICA written all over it!!

Komatsu Distributor

Time for New Equipment? Choose Roland

Reliable Equipment

- Manufactured to withstand any environment

Responsive Service

- Roland provides service on the job site or in their state-of-the-art facilities

KOMATSU®

Call the Roland Location nearest you today!

Bolingbrook 630-739-7474	Carterville 618-985-3399	Marengo 815-923-4966
Palmyra 573-769-2056	Springfield 217-789-7711	www.rolandmachinery.com

2014 Committees

Associate

Brad Baker, Chair - Spfld Plastics
 Mark Baker - Springfield Plastics
 Chad Nicholson - Fratco, Inc.
 John Pogge - Prinsco, Inc.
 Dave Randolph - ADS

Auditing

Bill Dean, Chair
 Steve Anderson
 Ron Masching

Awards

Bill & Bev Dean, Chair
 Brent & Tracy Breedlove
 Bill & Janet Doubet

Budget

Tom Beyers, Chair
 Dan Day
 Bill Dean
 Dave Haag
 Dave Hurst

By-Laws

Stuart Anderson, Chair
 Bill Doubet
 Dave Hurst
 Stan SeEVERS
 Joe Streitmatter

Certification

Dave Hurst, Chair
 Wayne Litwiller
 Ron Masching
 Prof. Kent Mitchell, retired U of I
 Stan SeEVERS

Certification Board

Dave Hurst, Chair
 Forrest Davis
 Dave Kennedy
 Wayne Litwiller
 Ron Masching

Convention

Brent & Tracy Breedlove, Chair
 Bill Dean
 Grant & Lindsey Curtis
 Greg & Jennifer Furkin
 Corey & Whitney Getz
 Kristin Kutemeier
 Mike & Holly Yordy

Devotions

Jean Davis, Chair
 Steve Anderson
 Norm & Coretha Rozendaal

Education

Brent Breedlove, Chair
 Brad Baker
 Tom Beyers
 Richard Cooke: Univ. of Illinois
 Corey Getz
 Kristin Kutemeier
 Eric Layden
 Mike Yordy

Executive Committee

David Haag, Chair
 Tom Beyers, V.P.
 Janet Burtle-Doubet, Exec. Director
 Bill Dean, Treasurer
 Dave Hurst, 1st V.P.
 David Kennedy, Past President

Golf Outing

Wayne Litwiller/Bill Dean - Co-Chairs
 Jerry Biuso
 Brian Brooks
 Norm Kocher

Headquarters

Dan Day, Chair
 Steve Anderson
 Mark Baker
 David Haag
 Ron Masching

Industrial & Business Relations

David Kennedy, Chair
 Dan Day
 Bill Dean
 Wayne Litwiller
 Mike Yordy

Insurance

Dan Day, Chair
 Charlie Adams
 Lori Kennedy
 John McCoy
 Jackie Streitmatter

Ladies

Marsha Haag, Chair
 Judy Beyers
 Bev Dean
 Cathy Masching
 Jackie Streitmatter

Legislative

Steve Anderson, Chair
 Tom Beyers
 Lee Bunting
 Bill Doubet
 Dave Hurst
 Norm Kocher
 Joe Streitmatter
 Mike Yordy

Long Term Planning

Steve Anderson, Chair
 Stuart Anderson
 Dan Day
 Bill Doubet
 Ron Masching



Membership

Wayne Litwiller, Co-Chair
 Norm Kocher, Co-Chair
 Steve Anderson
 Mark Baker
 Tom Beyers
 Brent Breedlove
 Brian Brooks
 Forrest Davis
 Dan Day
 Scott Day
 Bill Dean
 Bill Doubet
 Eugene Glueck
 Ron Masching
 Larry Rhodenbaugh

Nomination

Joe Streitmatter, Chair
 Brian Brooks
 Dan Day
 Dave Hurst

On-Site Waste

Wayne Litwiller, Chair
 John McCoy
 Larry Rhodenbaugh
 Jason Winings

Picnic

Steve Anderson
 Bill Dean

Publicity

Bill Doubet, Chair
 Mark Baker
 Wayne Litwiller

Safety

Doug Nicholson, Chair
 Brent Breedlove
 Dave Hurst
 Dave Kennedy
 John McCoy
 Jason Winings

Show & Other Income

Dave Kennedy, Chair
 Brent Breedlove
 Brian Brooks
 Joe Krupps
 Wayne Litwiller
 John McCoy
 Joe Streitmatter





MEMBERSHIP APPLICATION

Illinois Land Improvement Contractors Association, Inc.

118 E. Knoxville · PO Box 474 · Brimfield, IL 61517
(309) 446-3700 · Fax: (309) 446-3744 · Email: janet@illica.net

Company Name: _____

Member Name: _____ Spouse's Name _____

Street Address: _____

City: _____ State: _____ Zip: _____ County: _____

Phone: (_____) _____ Cell Phone: (_____) _____

Fax: (_____) _____ Email: _____

Website (if applicable): _____ LICA Sponsor: _____

Check All Services Provided

- | | |
|---------------------------------|---|
| CUI - Cable/Utility Inst. | OSW—On Site Waste Treatment |
| DB - Directional Boring | PD - Ponds / Dams |
| DI - Drainage/Irrigation | RBD - Road Boring/Drainage |
| DWM - Drainage Water Mgmt | R - Reclamation |
| EC - Erosion Control | SA - Dealer/Service Co./Government Agency/
Consultant/Insurance Agency |
| EMC - Earthmoving/Land Clearing | SP - Site Prep |
| EXG - Excavating/Grading | SWU - Sewer/Water/Underground Utilities |
| GR - Gravel/ Rock Production | TH - Trucking / Hauling |
| LL - Land Leveling | TW - Terraces / Waterways |
| LS - Landscaping | WM - Water Management |
| ODW - Open Ditch Leveling | Other: _____ |

- Active Contractor Membership - \$295**
(One hundred seventy dollars (\$170) for Illinois Membership plus One hundred twenty five dollars (\$125) for National Membership)
(Active members are individuals engaged in the business of entering into contracts for performing work that will result in soil, land, natural resource conservation or rehabilitation, water conservation, control and prevention of soil erosion, depletion and misuse of natural resources and soil and water pollution and contamination.)
- Associate Membership - \$295** (Associate members are those businesses that manufacture or sell equipment, materials or services used by active members)
- Affiliate Membership - \$85** (Affiliate members are individuals employed by an active member in the business that makes the active member eligible for membership)

Signature: _____

NEW BENEFIT: CASE LICA DISCOUNT!



A special discount for LICA members!

We have an APPROVED LICA PROGRAM!!! A special discount for Land Improvement Contractors of America (LICA) members. Beginning April 1, 2014, depending on the type of machine, members will receive additional dollar amount off. This is above and beyond any current programs such as financing, cash in lieu of financing, ProCare, etc.

Product Line	DSA Amount
Skid Steer Loaders/Compact Track Loaders	\$500
Compact Excavators	\$500
Small Compaction (DV23, DV26, DV36, DV45)	\$500
Rough Terrain Forklifts	\$750
Tractor Loaders	\$750
Backhoe Loaders	\$1,500
Compact Wheel Loaders	\$1,500
Large Compaction	\$2,000
Crawler Dozers	\$2,000
Excavators (includes Midi)	\$2,000
Motor Graders	\$2,000
Wheel Loaders	\$2,000

Have you considered adding one of these models to your fleet?

What YOU can save right now!

On heavy products (Excavators CX130 size & larger, Wheel Loaders 521F & larger, Dozers, and Motor Graders), the member gets the ProCare and this program.

ProCare

- 3-year / 3000-hr. Full machine Factory Warranty
- 3-year / 3000-hr. Planned Maintenance
- 3-year Advanced SiteWatch™ Subscription, Remote. Control.



Contact your CASE Dealer today!

CALENDAR OF EVENTS

Illinois

3rd Annual Area 6 Golf Outing
Meadowview Golf Course - Mattoon, IL
Friday, June 20, 2014 - Lunch @ Noon
 1 pm Shotgun start
 Steak Dinner - 6 pm

Summer Picnic & Member Meeting
Stoney Creek Inn - 101 18th Street - Moline, IL
Friday, June 27, 2014

Noon Lunch & Brief Member Meeting at Stoney Creek
 Load bus for Coal Valley and Live Equipment Demo
 Hands-on Equipment Operation at Coal Valley
 John Deere Pavilion and Gift Shop

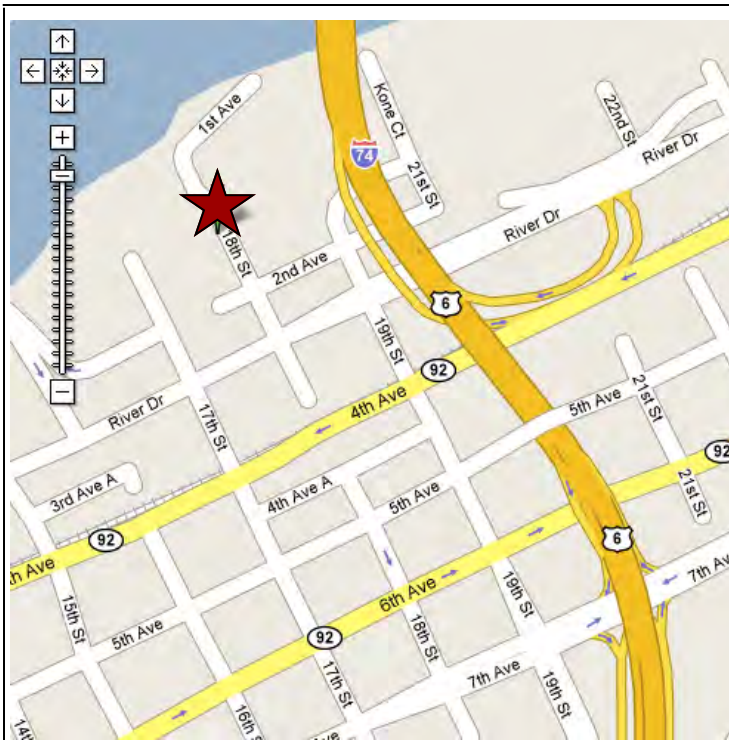
Summer Drainage Workshop
Richland Community College - 1 College Dr. Decatur, IL
July 29 - 31, 2014
 See page 9 for tentative agenda

National

LICA Summer Meeting
Indianapolis, IN
 Tours & Education - Tuesday July 15 - Thursday July 17
 Committee Meetings - Friday, July 18
 Board Meeting - Saturday, July 19

ADVERTISERS INDEX

Agri Drain Corp	4
BM Truck Equipment	4
Brown Bear Corp	12
Envision Insurance Group.....	5
Fratco, Inc.	9
Great Lakes Inter Drain	10
JCG Midwest.....	2
Martin Equipment of Illinois	24
Midwest Auger Aerator.....	24
Midwest Plastic Products	23
Northland Trenching Equipment, LLC	13
Precision Intakes Ltd	24
Prins Insurance Inc./United Fire Group	2
Prinsco	5
Roland Machinery Co	15
RWF Bron	23
Schlatter's	6
Springfield Plastics Inc.	24



Summer Board & Members Meeting Location
Stoney Creek Inn - 101 18th St. - Moline, IL 61265
Ph: (309) 743-0101

From Illinois: Traveling west on I-74 from Central Illinois, bear right onto the I-280 West / I-74 West ramp to Moline/Rock Island. Take I-74 W to the 5A exit to Moline. Take the 7th Avenue Exit 2. Bear left at 7th Avenue, Turn right at 19th Street, Turn left at 2nd Avenue and then right onto 18th street. The Stoney Creek Inn is on the left.

SAFETY FEATURE: ARE TRENCH EXCAVATIONS CONFINED SPACES?



The answer to this question is not as obvious as you may think. Let's review some terminology.

By OSHA definition, a confined space means the space is:

- Large enough and so configured that an employee can enter and perform assigned work;
- Has limited or restricted means for entry or exit;
- Is not designed for continuous employee occupancy.

A trench excavation would certainly seem to meet the confined space criteria. By OSHA definition, a *trench excavation* means;

- A narrow excavation (in relation to its length) made below the surface of the ground;
- In general, the depth is greater than the width;
- But the width of a trench (measured at the bottom) is not greater than 15 feet.

How Does a *Permit-Required Confined Space* relate to a trench excavation?

A permit-required confined space has one or more of the following characteristics:

1. Contains or has the potential to contain a hazardous atmosphere. Oxygen deficient, toxic, or flammable atmospheres can occur in trenches, displacing the normal air. Some of the most common gases of concern are carbon monoxide, methane, and hydrogen sulfide. These gases should be suspected whenever trenches are near combustion engines, sewage lines, landfills, swamps, leaking underground storage tanks, or when decomposing organic matter is nearby. Hydrogen sulfide is heavier than air and may fill the trench starting from the bottom. OSHA law states that if hazardous atmospheres could reasonably be expected to exist, the atmospheres shall be tested before employees enter excavations greater than 4 feet in depth.
2. Contains a material that has the potential for engulfing an entrant.
3. Has an internal configuration such that an entrant could be trapped or asphyxiated by inwardly converging walls or by a floor which slopes downward and tapers to a smaller cross-section. Trenches without adequate sloping, or other protection from collapse, create potential for entrants to be engulfed in a cave-in of the surrounding earth. Excessive rain water, ground water, or liquid from leaking or damaged pipes also may create conditions for engulfing trench entrants, which meets the criteria for both 2 and 3 above.
4. Contains any other recognized serious safety or health hazard. In addition, access into trenches over 4 feet in depth can usually be accomplished only by ladder, which poses known risks of slipping and falling. Entrants could also be struck by excavation machinery or by falling materials from overhead.

By now you realize that a trench excavation may indeed present many of the hazards of a permit-required confined space. In general practice, all trench excavations over 4 feet in depth should be considered as confined spaces until all of the potential, associated hazards have been ruled out by a competent person.

Discussion Date: _____

Employee Participants

2014 National LICA Summer Meeting

Tour Information



Tuesday, July 15- Indianapolis Motor Speedway

The Indianapolis Motor Speedway is the world's largest spectator sporting facility. It plays host annually to four events in three major racing series: Grand Prix of Indianapolis, Indianapolis 500 Mile Race, Brickyard 400 and Red Bull Indianapolis GP. Established in 1909, the Indianapolis Motor Speedway has long prevailed as an icon of motorsports excellence. This tour will consist of the Hall of Fame Museum, and then will be followed by a 90 Minute outside guided tour.

Wine & Canvas

Enjoy a lovely wine tasting right at the Marriott! In addition to wine you will be creating your own work of art. An artist will take you through step-by-step to re-create the painting of the day. Two glasses of wine and your own creation are included with the cost of your ticket.

Wednesday, July 16 - Caterpillar Tour, Harry's Chocolate Shop & Purdue (Limited to 45 People)

Come see the Caterpillar manufacturing plant in Lafayette, Indiana that was opened in 1982, and has since become the company's main source for medium-speed diesel engines for marine, petroleum, electric power, locomotive and industrial applications. After touring this impressive facility, CAT invites LICA members to a hot buffet lunch. **NO SHORTS, CLOSE-TOED SHOES ONLY**

Following the CAT tour members will stop by the famous Harry's Chocolate Shop. In 1919 Harry J. Marack opened Harry's Chocolate Shop as the only Soda Fountain near Purdue University well into the 1920's. It has been opened for more than 80 years in the same location!

After we will go to Purdue ACRE farm to see progress on the tiling project that was done in July of 2012 and the Purdue Throc Morton Farm where a 2 stage ditch was put into place as well as a bio-reactor. Following that we will be testing equipment from West Side Tractor Sales.



Thursday, July 17 Beef and Boards Matinee

A Mighty Fortress Is Our Basement, the latest offering in the hilarious and heart-warming Church Basement Ladies series. The year is 1960 and it means new high heels for confirmation, a food booth at the county fair and spontaneous driving lessons! Buffet included with ticket.

Golfing at Brickyard Crossing (20 GOLFERS MAX)

Come and play at the Brickyard Crossing! \$125 includes green fees, golf cart and a box lunch. Rental clubs are available for \$70.00.

BOTH THURSDAY EVENTS DO NOT INCLUDE TRANSPORTATION WE WILL BE WELCOMING VOLUNTEERS TO DRIVE.

Saturday, July 19 Racing at Post Road Recreation Center

LICA couldn't visit Indianapolis without doing some racing themselves! Race 3 tracks for 2 hours an unlimited amount of times. This includes the indoor Oval Slick Track. Members can also mini-golf and participate in haunted house laser tag.



2014 National LICA Summer Meeting

Indianapolis, Indiana • July 14 - 19

Company _____
 City _____ State _____
 Phone _____
 Email _____

Names of Attendees (for Badges)

Name _____
 Name _____
 Name _____
 Name _____

Early Bird Registration

Postmarked before June 13, 2014

Members, Spouses, Associates \$250
 Number Attending _____ Total \$ _____

Youth: 13 Years & under (Under 3 Free) \$225
 Number Attending _____ Total \$ _____

Registration

Postmarked after June 13, 2014

Members, Spouses, Associates \$280
 Number Attending _____ Total \$ _____

Youth: 13 Years & under (Under 3 Free) \$240
 Number Attending _____ Total \$ _____

Registration includes: Assc. Night, Fri. breakfast & lunch; Sat. breakfast, lunch & dinner with show.

Optional Tours

Tues. July 15

Speedway Museum No. Attending _____
 Cost \$40 per person Total \$ _____

Wine & Canvas No. Attending _____
 Cost \$40 per person Total \$ _____

Weds. July 16

CAT/Harry's/Purdue No. Attending _____
 Cost \$60 per person Total \$ _____

Thurs. July 17

Beef & Boards Matinee No. Attending _____
 Cost \$38.50 per person Total \$ _____

Brickyard Crossing No. Attending _____
 Cost \$125 per person Total \$ _____

Sat. July 19

Go Karts No. Attending _____
 Cost \$45 per person Total \$ _____

Tour Total \$ _____

Convention total \$ _____

(tours plus convention registration)

Enclosed is my check for \$ _____

or charge my credit card

Credit Card MC Visa

Cardholder _____

Card # _____ Exp. _____

Return this form with payment to:

LICA Summer Meeting
3080 Ogden Ave. Suite 300, Lisle, IL 60532

Hotel Information:
Indianapolis Marriott Downtown
350 W Maryland St. Indianapolis, IN 46225

\$129/night (plus taxes)
Call: 888-236-2427

Group Name: Land Improvement Contractors
Reserve by June 13, 2014

Registration Policy: Only individuals registered and wearing badges may attend Summer Meeting events. All must register to attend conventions, programs or functions. No registration will be processed without payment. Registration fee deadlines will be strictly enforced.

Refund Policy: For cancellations received prior to June 21, 2014 a \$30.00 charge will be deducted from the original amount paid. No registration payment will be refunded after June 21, 2014 unless there has been an emergency.

MIDWEST PLASTIC PRODUCTS

Jefferson, WI & Plainfield, IA

Manufacturer of Quality Drain Tile Since 1972

Excellent Customer Service

Call for competitive pricing 800-362-6642



www.draintile.com

Sizes 3" – 48"
Single and Dual Wall
Fittings to fit all sizes
dlucas@draintile.com
Free Delivery
within 300 miles

PLOWING AHEAD

in Farm Drainage

BRON Self Propelled Drainage Plow

BRON's line of Self Propelled Drainage Plows has set the standard in Farm Drainage. BRON manufactures 750 Double Link Plows, 750 RC Link Plows and 750 Cantilever Plows. Engineered from the ground up, the BRON Drainage Plow gives you better control, higher productivity and extreme comfort while offering more features than any other drainage plow on the market.

- Balanced Weight Distribution
- Ergonomic Cab Comfort
- FOPS/ROPS Certified
- Telescopic Tracks
- Enhanced Operators Visibility
- Tri-Core Cooling System



750 Cantilever Plow



750 Double Link Plow



750 RC Link Plow



POWER TO PERFORM

rwfbron.com
1.800.263.1060

EECH13559-504-01



Springfield Plastics, inc.

CONSISTENT QUALITY AT EVERY INCH

Your Supplier for Quality Drainage Products
A Complete Line of the **HEAVIEST FITTINGS** on the Market



35TH ANNIVERSARY

**QUALITY YOU CAN COUNT ON,
THE TREATMENT YOU DESERVE**

1-800-252-3361
www.spipipe.com

THE ONLY U.S.
MANUFACTURER
CERTIFIED AS USING
ONLY 100% VIRGIN
MATERIAL
SINCE 2008

ILICA SUPPORTER FOR 35 YEARS

MARTIN
E q u i p m e n t



Goodfield, IL 309-965-2502	Springfield, IL 217-528-4347	Tolono, IL 217-485-6755
Rock Island, IL 309-787-6108	Peru, IL 815-224-4711	Cedar Rapids, IA 319-365-0515
Dubuque, IA 563-588-1950	Ashland, MO 573-657-2154	Palmyra, MO 573-769-2274

TRI-STATE
CONSTRUCTION EQUIPMENT CO.



"LIFE'S SHORT—DIG FAST!"

BUCKEYE 7200 MAGNUM



- STATE-OF-THE ART DESIGN
- HIGHER PRODUCTION
- BETTER BUILT

MIDWEST AUGER-AERATOR

AUGER BACKFILLERS / WHEEL TRENCHERS
AUTHORIZED DEALER — BUCKEYE / SPEICHER
1-800-232-7008



Precision Intakes

Full Line of
Surface Water Intakes

- 8" & 10" riser with patented 8" & 10" combination Tees.
Also 6" square & round risers with patented reducing Tee.
- Constructed of heavy-weight, high-density polyethylene.
- Parts highly adjustable & interchangeable with others on the market.
- Orifice plate placed at tee level or at ground level.
- Exclusive locking device on each part.
- User Friendly-Priced effectively.
- Adaptor available to repair old metal or broken intakes.



Type 1 Riser
6" - 8" & 10" Trash
Baskets with
marker cup features

Why inventory 2, when 1 serves both!



"Dealer Inquires Welcome"

~~PRECISION INTAKES~~

Norm & Coretha Rozendaal
2064 Republic Ave West
Monroe, IA 50170

(800) 932-7611
(641) 259-2651
(641) 259-3218 Fax